

INTO»LONDON

WORLD EDUCATION CENTRE

2020-21



Discover your perfect university

Pathway programmes for international students

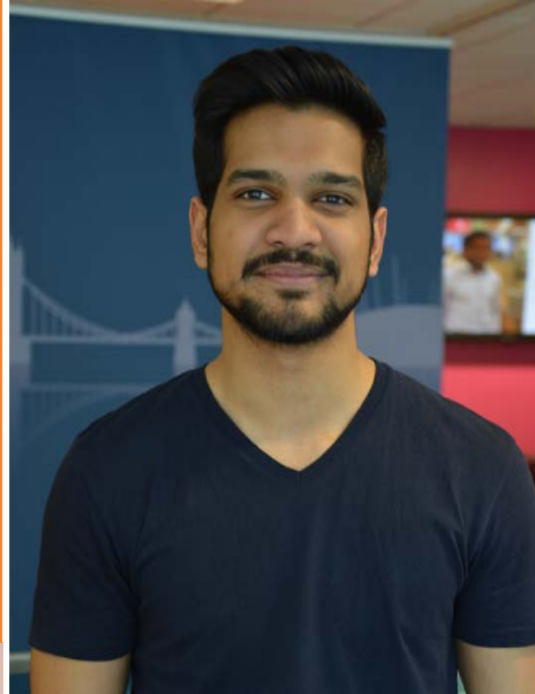
Recognised by more than 100 UK universities, our students have progressed to a wide range of universities including:





"INTO London has helped me develop new skills, enhance my knowledge and get into my dream university. The best thing about INTO London is the care and personal attention I have received from each and every faculty I have come across during my studies."

Yunaisa, Bangladesh
Completed International Foundation and progressed to BSc (Hons) Business Management at Lancaster University



"INTO London prepares you for university. I am thankful to INTO London for making me a better person and allowing me to make new friends from across the world"

Arsalan, Pakistan
Completed International Foundation and progressed to BSc (Hons) Business Management at Queen Mary, University of London



"My teacher gave me tools to deal with new information and subjects. Studying abroad will help me increase my chances of employment and has helped me gain independence."

Gabriella, Chile
Completed International Foundation and progressed to BSc (Hons) Business and Management at Royal Holloway, University of London



"The placements service at INTO is so helpful. We met a lot of universities and got a lot of information – it helped us decide where we are going to go next. INTO helped us find the best university for us."

Aman, Indonesia
Completed International Foundation and progressed to BA (Hons) International Relations at the University of Westminster



"INTO London reminds me of a family. You can talk to everyone and the atmosphere is relaxed. I am learning to see things in a different way, so I feel like I have grown intellectually."

Eduardo, Brazil
Completed International Foundation and progressed to BA (Hons) Journalism at Cardiff University

100+ universities Thousands of degrees You decide!

Welcome to INTO London, where university success starts with the best preparation. We give international students like you the opportunity to study at a leading university, with guaranteed progression to hundreds of institutions across the UK and Europe.



No matter what you want to study, INTO London can help you find your perfect degree. From traditional subjects such as Accounting, Architecture and Engineering to more unusual courses including Yacht Design, Jewellery Design and Herpetology, you'll have thousands of degrees to choose from.

If you're not sure what subject is right for you, don't worry – you're not the first student we've helped to make this decision. Hundreds of INTO London students have progressed to higher education since the Centre opened in 2013.

You'll complete your pathway course at our modern Study Centre in the heart of London. As an international student, there's no better place to live and learn, with more than 100,000 international students choosing this cosmopolitan city each year.

Choosing to study abroad is a big decision, but at INTO London, we'll give you everything you need to succeed at university and beyond.

Choose #INTOLondon and open up a lifetime of opportunities.

BEST

city in the world
for students

(QS Best Student Cities 2019)

INTO London students have left us destined to progress to a wide range of universities, including:

Progression university	Progression degree	Nationality
Cardiff University	Media, Journalism and Culture	Brazil
Durham University	Business and Management with Business Placement	Chile
Goldsmiths, University of London	Design	Russia
King's College London	Pharmacology	China P.R.
Lancaster University	Environmental Science	Hong Kong
Leeds College of Art	Comic and Concept Art	Thailand
Newcastle University	Electrical and Electronic Engineering	Bahrain
Queen Mary, University of London	Business Management	Pakistan
Royal Holloway, University of London	International Accounting	Azerbaijan
University of Birmingham	Civil Engineering	Belgium
University of Kent	Architecture	Sweden
University of Leeds	Computer Science with High-Performance Graphics and Games Engineering	South Africa
The University of Manchester	Pharmacy	Iran
University of Nottingham	Electronic and Computer Engineering	Nigeria
University of Southampton	Fashion Marketing/Management	South Korea
University of the Arts London	Drawing	Singapore
University of York	Interactive Media	Malaysia



90%

Average pass rate over the past 3 years

(INTO London UK Progression Destinations 2017-2018, 2016-2017 and 2015-2016)



INTO London students have progressed to 18 of the top 30 UK universities*, and 8 of the **top 100** universities worldwide**

* Times Higher Education World University Rankings 2019
**QS World University Rankings 2020



23% of INTO London students, who passed their programme, achieved an **extremely high grade of 70%+**

(INTO London UK Progression Destinations 2017-2018)



Progression options to **more than half of the top 50 UK universities**

Supporting your university application

Choosing to study abroad is a big decision, but at INTO London, we are here to support you on the journey towards your perfect degree at your perfect university.

Choosing your university

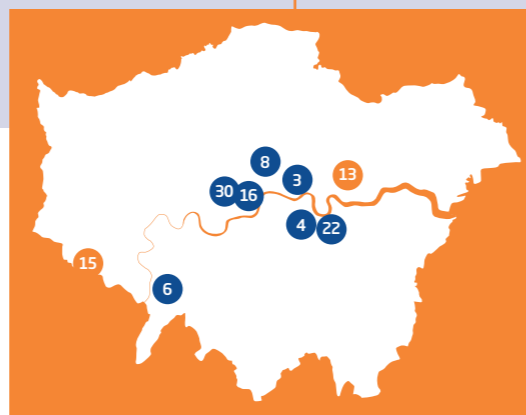
No matter your goal, at INTO London, we are committed to helping you reach it. We offer a guaranteed pathway to more than 100 universities in the UK and Europe – and with thousands of degree programmes to choose from, you'll be spoilt for choice.

Can't decide? Don't worry – while you're focusing on your studies, we're getting to know you, so we can offer personalised support to help you choose. This includes:

- regular one-to-one sessions with our **Student Placement Officer**, where you can discuss your options in detail
- our annual **Placement Fair**, which gives you the opportunity to speak to representatives from more than 50 UK universities
- **University Masterclasses**, where you'll gain essential application skills such as writing a personal statement and preparing a portfolio
- additional support if you are applying to a top university, such as **preparation for university interviews** with practice interviews



93%
student satisfaction
for advice on university
progression options
(INTO Annual Student
Experience Survey 2019)



Guaranteed progression for all successful students to 100+ UK universities

Here are just some of the universities our students can choose to progress to across the UK.

Russell Group and UK top 30* universities:

- 2
- 7
- 9
- 11
- 13
- 14
- 15
- 17
- 18
- 20
- 25
- 27
- 28
- 31

London-based universities:

- 3
- 3
- 4
- 6
- 8
- 13
- 15
- 16
- 22
- 30

Other popular universities:

- 1
- 5
- 10
- 12
- 19
- 21
- 23
- 24
- 26
- 29

"The greatest advantage of INTO London is the placement service, which helps you to get into university. They explain the process from the very beginning, from how to research your options to applying to university."
Aibar, Kazakhstan
Completed International Foundation and progressed to BSc (Hons) Business and Management at the University of Westminster

INTO London students have progressed to universities ranked in the **top 100 worldwide***, including:

- Durham University
- King's College London
- The University of Manchester
- University of Leeds
- University of Nottingham
- University of Southampton
- University of Warwick

* QS World University Rankings 2020

INTO London students have also progressed to universities ranked in the top 100 worldwide for specific subjects**, including:

Art and Design

- University of the Arts London
- Goldsmiths, University of London
- Kingston University

Business and Management

- Aston University
- Lancaster University

Communication and Media Studies

- Cardiff University
- University of Westminster

Hospitality and Leisure Management

- Oxford Brookes University
- Bournemouth University
- University of Surrey

Sports-related subjects

- Brunel University London

** QS World University Rankings by Subject 2019

Discover London

Immerse yourself in local London with cool markets, street art and fashionable shops, or the bright lights and big attractions of the capital. Whoever you are and whatever you like, you'll love living in the heart of one of the world's most multicultural cities.



Estimated living costs

As well as your tuition fees, you will need to budget for a minimum of £1,265* per month to cover your living costs in London.

*in line with current UKVI requirements



London on your doorstep

INTO London's central location combines the professional buzz of London's financial district with the creative culture of nearby Shoreditch. You'll be in the perfect place to discover everything London has to offer, including:

- world-famous landmarks such as **Buckingham Palace**, where the Royal Family live
- free museums like the **Tate Modern** and the **Museum of Natural History**
- **Oxford Street, Harrods** and **Selfridges** for the ultimate shopping experience
- independent stalls and vintage shops at **Camden Market**
- **West End** theatre shows and musicals

Global cuisine

London is a melting pot of cultures and communities, so you'll have no problem finding tasty and authentic food from all over the world. For global food within easy reach of the Centre, visit:

- **Spitalfields, Petticoat Lane** and **Dinerama** street food markets
- **Chinatown**, for delicious East Asian cuisine
- **Brick Lane**, for an authentic Indian curry
- stylish dining along the **South Bank**

Sport in the city

Whether you prefer playing or watching, London is home to some of the world's best sporting venues. You could:

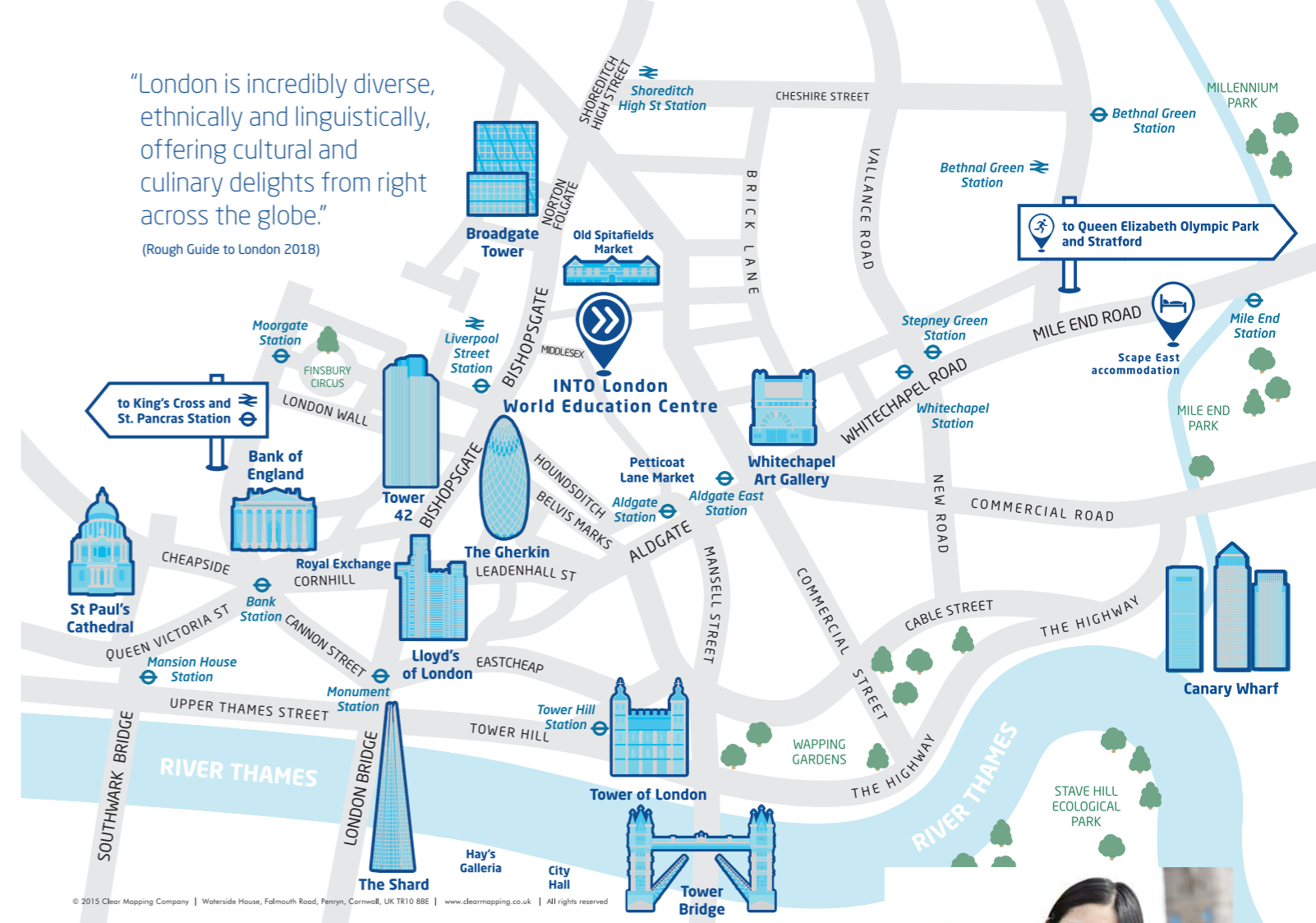
- watch football at **Wembley Stadium**
- enjoy rugby at **Twickenham**
- experience tennis at **Wimbledon**
- visit the **Queen Elizabeth Olympic Park** to use world-class sports facilities

Exploring London and beyond

Thanks to excellent public transport, exploring London couldn't be easier. Nearby **Liverpool Street Station** will help you travel to other UK cities, and the Eurostar and several international airports will take you even further afield.

"London is incredibly diverse, ethnically and linguistically, offering cultural and culinary delights from right across the globe."

(Rough Guide to London 2018)



"London offers plenty of options for places to eat, visit and be entertained. My favourite place to go is Kew Gardens, I like to have a coffee, lie down on the grass and hang out with friends."

Zhen, China
Completed Pre-Master's and progressed to MSc International Management at the University of Southampton



Life at the Centre

A modern building with excellent facilities and an exciting programme of activities, all in the heart of London – the world’s best student city. There is truly no better place to study.

90%
overall student satisfaction
(INTO Annual Student Experience Survey 2019)



Your Study Centre

The INTO Study Centre is fully equipped with everything you need to succeed on your pathway course. Inside the Centre, you'll find:

- a diverse international student community from more than 60 different countries
- the **Learning Resource Centre**, with books, journals and study materials
- modern teaching rooms
- lots of space for studying, socialising and group work
- a selection of drinks, meals and snacks at the **INTO Café**

Art and Design students will also have access to an **Art Studio** that is equipped with tools and materials for a wide variety of art forms.

While most pathway courses will be taught entirely at the Centre, Biochemistry students can also gain practical experience through regular classes at **London Metropolitan University's** fully-equipped **Superlab**.

Supporting you

Studying in another country can be a big adjustment, but our **Student Services team** will help you settle in to life in London. Throughout your time at the Centre, you'll have access to a range of excellent services, such as:

- help opening a bank account and registering with a doctor
- a 24-hour emergency helpline if you need to speak to staff during out-of-office hours
- a qualified life coach, who can help you develop effective life skills for academic study

If you're under 18, we offer extra support including ensuring your safe transfer from the airport and checking on you each day at your residence. You'll be given a dedicated named person to contact to ensure your wellbeing and you'll receive a copy of our code of conduct, which you must follow – especially outside class when you will be unsupervised.

For more information on our policies including a copy of our Under 18 Policy, visit: www.intostudy.com/into-london/terms

Get involved and make friends

From the moment you arrive, you can get involved in exciting social events, giving you the opportunity to get to know your new classmates, explore the sights of London and make lifelong memories. You'll enjoy:

- a fun-filled orientation programme in your first week
- day trips, excursions and celebrations, which have included a boat cruise on the **River Thames** and visits to **Cambridge** and **Windsor Castle**
- a variety of social sports clubs including football, basketball and more

Home from home

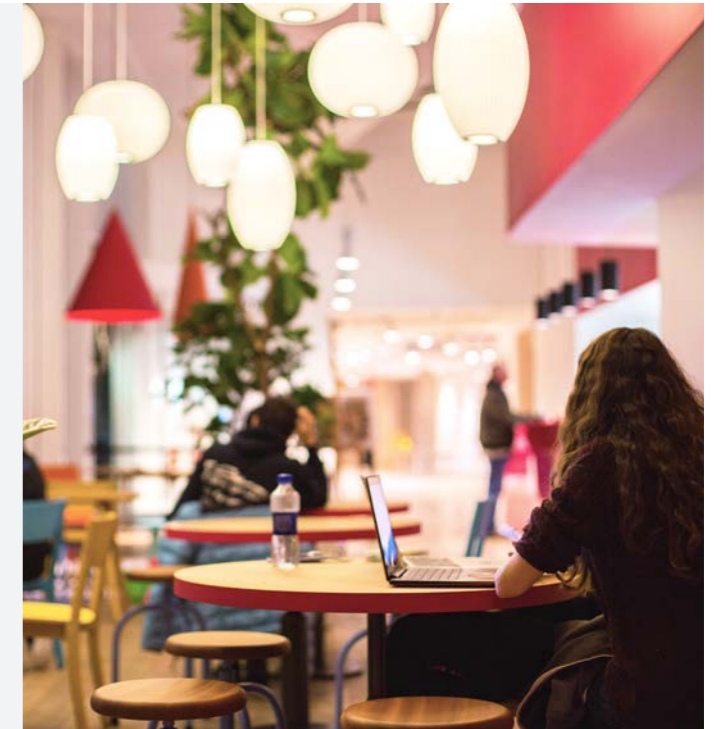
With a choice of accommodation options, including student residences within easy reach of the Centre and homestay accommodation with approved hosts, it's easy for you to find the perfect place to call home.

Scape East

These modern flats are just 20 minutes by Underground from the Centre, and offer bright and vibrant communal areas to catch up with friends. Your studio room has a private bathroom and kitchen, but if you don't fancy cooking, there's an on-site restaurant. You can even choose to book your accommodation with a meal plan option and have breakfast and lunch or dinner cooked for you at the on-site restaurant.



- En suite bathroom
- Communal areas
- Laundry facilities
- Wi-Fi
- 24/7 staff
- Gym facilities
- Accepts under 18s
- **20 MIN** by Underground to INTO Centre



Homestay

This is a unique opportunity to experience British life and culture first hand. You will have a private room in a carefully selected host's home, sharing mealtimes and living spaces.

Other accommodation options may become available throughout the year, so check online for the most up-to-date information: www.myin.to/AccommodationOptions

Supporting you

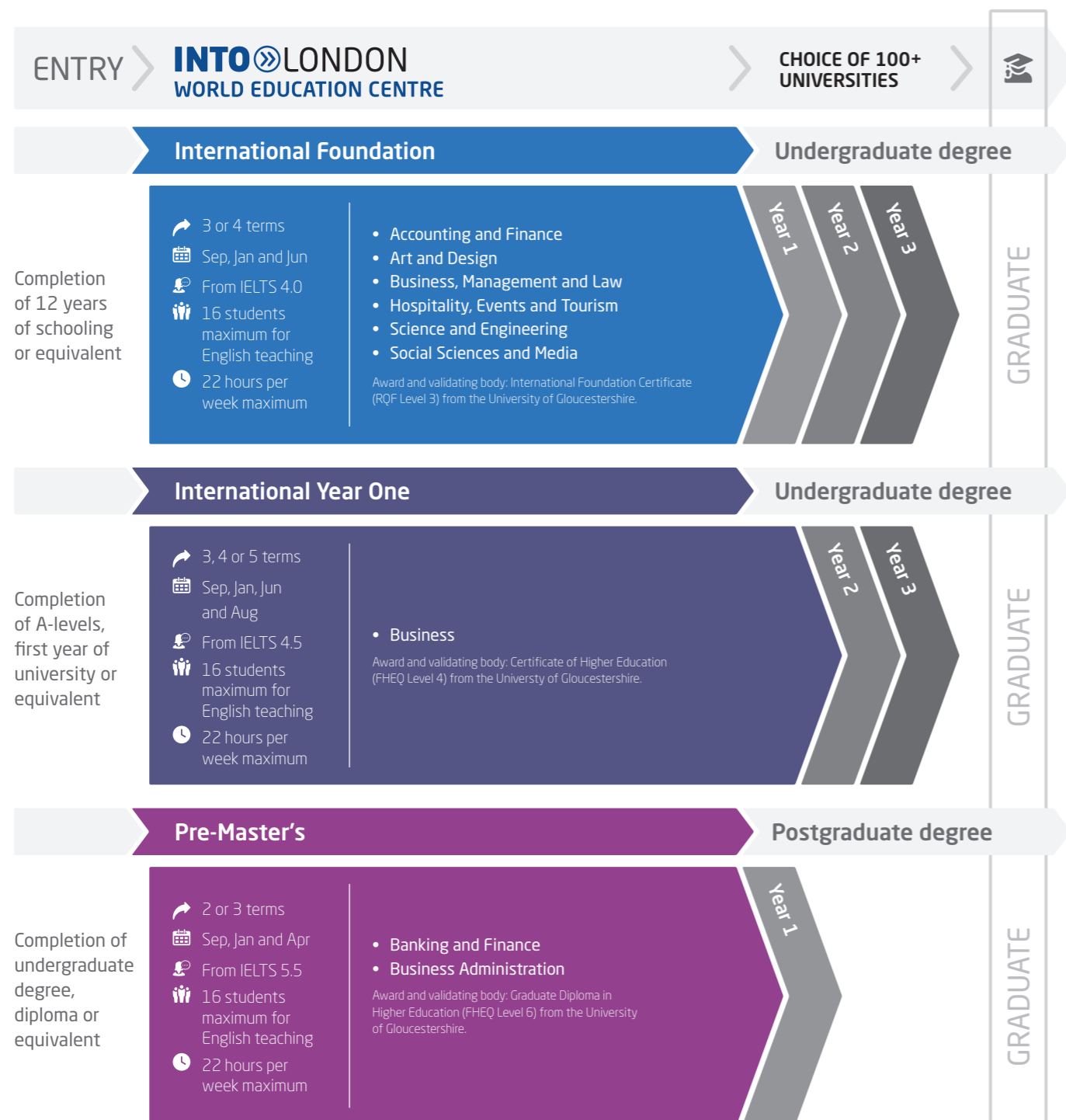
In the residence, you'll find staff available 24/7 to offer support, and we'll also provide you with a 24-hour emergency telephone number. If you're under 18 and living in INTO managed accommodation or in homestay, we offer extra support from residential wardens or homestay hosts, as well as checking on you each day at the student residence where you live.

95%
student satisfaction for living experience
(INTO Annual Student Experience Survey 2019)

INTO London World Education Centre aims to provide the accommodation requested. However, there may be occasions when INTO London World Education Centre is unable to provide the requested accommodation and reserves the right to offer an alternative type of accommodation instead. The price for any alternative accommodation may differ and will be confirmed to students at the time of their offer.

Choosing your course

Prepare for your university degree with our tailored academic pathway programmes. You'll benefit from university-style teaching for subject-based modules and high academic standards by choosing one of our programmes. Then, when it comes to progressing to your chosen degree, we'll support you with your university application.



Please note that course length and start month options may vary depending on the pathway chosen. Please visit www.intostudy.com/into-london/courses for full information.

International Foundation

Accounting and Finance - IFAF

> Learn to apply accounting theories to real-life situations.

What will I study?

You will need to earn 120 credits from the following module options to successfully complete your pathway programme:

Core modules

- Critical Thinking and Communication Skills (1.5 credits)
- English Language for Foundation Study (0-45 credits)*
- Introduction to Accounting (1.5 credits)
- Introduction to Finance (1.5 credits)
- World of Business (1.5 credits)

Optional modules

- Business Decision Making (1.5 credits)
- Concepts and Applications of Advanced Mathematics (1.5 credits)
- Economics (1.5 credits)
- Global Issues (1.5 credits)
- Introduction to Statistics and Probability (1.5 credits)
- Marketing (1.5 credits)

Progress to **95+** universities. Find out more online www.intostudy.com/into-london/IFAF

Art and Design - IFAD

> Enjoy practical learning in INTO London's Art and Design studio.

What will I study?

You will need to earn 120 credits from the following module options to successfully complete your pathway programme:

Core modules

- Art and Design Practice (1.5 credits)
- Concepts in Art and Design (1.5 credits)
- English language for Foundation Study (0-45 credits)*
- Final Major Project for Art and Design (1.5 credits)
- Self-initiated Project (1.5 credits)
- Study Skills for Art and Design (1.5 credits)

Optional modules

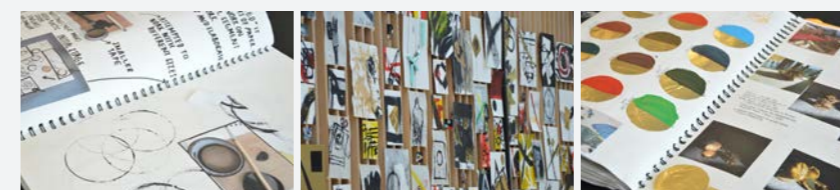
- Applications of Digital Technology in Contemporary Projects (1.5 credits)
- Global Issues (1.5 credits)
- Marketing (1.5 credits)
- Sociology (1.5 credits)

Progress to **60+** degrees. Find out more online www.intostudy.com/into-london/IFAD



"The teachers provided me with help on my portfolio, choosing the right photos and preparing me for interviews. You have the opportunity to go beyond your capabilities at INTO London."

Dafinah, Singapore
Completed International Foundation in Art and Design and progressed to BA (Hons) Drawing at University of the Arts London.



* If your level of English is IELTS 4.5, you will study towards the maximum number of English language credits. If you have a higher level, you may study fewer or no English language modules and more optional modules.

Progress to Year 1 of an undergraduate degree at a UK university

Start date

- 3 term: Sep or Jan
- 4 term: Sep or Jun

English language entry requirements*

- 3 term: IELTS 4.5 (with a minimum of 4.0 in all subskills) or equivalent
- 4 term: IELTS 4.0 (with a minimum of 4.0 in all subskills) or equivalent

Age requirement

16 years and above**

* If you do not meet the minimum English language requirements, you should apply for our Academic English course. See below for more information.

** All students commencing courses on a published September start date must be 16 years old by 01 September that calendar year. All students commencing courses for the January start date must be 16 by 01 September 2019.

INTO London students have previously received offers from:

Queen Mary, University of London,

top 50

in the UK

(The Times and The Sunday Times Good University Guide 2019)

University of Birmingham,

top 100

in the world for Accounting and Finance

(QS World University Rankings by Subject 2019)

University of the Arts London,

2nd

in the world for Art and Design

(QS World University Rankings by Subject 2019)

Goldsmiths, University of London,

11th

in the world for Art and Design

(QS World University Rankings by Subject 2019)

Progress to Year 1 of an undergraduate degree at a UK university

Start date

3 term: Sep or Jan
4 term: Sep or Jun

English language entry requirements*

3 term: IELTS 4.5 (with a minimum of 4.0 in all subskills) or equivalent
4 term: IELTS 4.0 (with a minimum of 4.0 in all subskills) or equivalent

Age requirement

16 years and above**

* If you do not meet the minimum English language requirements, you should apply for our Academic English course. See below for more information.

** All students commencing courses on a published September start date must be 16 years old by 01 September that calendar year. All students commencing courses for the January start date must be 16 by 01 September 2019.

INTO London students have previously received offers from:

Durham University,

 top 15

in the world for Business

(The Times and The Sunday Times Good University Guide 2019)

Lancaster University,

 top 100

in the world for Business

(QS World University Rankings by Subject 2019)

University of Surrey,

 8th

in the world for Hospitality and Leisure Management

(QS World University Rankings by Subject 2019)

Oxford Brookes University,

 9th

in the world for Hospitality and Leisure Management

(QS World University Rankings by Subject 2019)

International Foundation

Business, Management and Law - IFBML

- > Learn outside the classroom with interactive field trips in commercial settings to encourage entrepreneurship.

What will I study?

You will need to earn 120 credits from the following module options to successfully complete your pathway programme:

Core modules

Critical Thinking and Communication Skills (15 credits)
Economics (15 credits)
English Language for Foundation Study (0-45 credits)*
Introduction to Law and Legal Systems (15 credits)
World of Business (15 credits)

Optional modules

Business Decision Making (15 credits)
Concepts and Applications of Advanced Mathematics (15 credits)
Global Issues (15 credits)
Introduction to Statistics and Probability (15 credits)

Progress to **100+** universities. Find out more online www.intostudy.com/into-london/IFBML

Hospitality, Events and Tourism - IFHET

- > Explore the UK's leisure industries and visit popular tourist destinations for research.

What will I study?

You will need to earn 120 credits from the following module options to successfully complete your pathway programme:

Core modules

Critical Thinking and Communication Skills (15 credits)
English Language for Foundation Study (0-45 credits)*
The UK as a Destination (15 credits)
World of Business (15 credits)

Optional modules

Global Issues (15 credits)
Marketing (15 credits)
Operational Skills for Hospitality, Tourism and Events (15 credits)

Progress to **75+** universities. Find out more online www.intostudy.com/into-london/IFHET

"The International Foundation was all I needed before starting university. It moulded me and will help me throughout my life as an undergraduate. It's the best thing that could have happened to me."

Rabia, Pakistan
Completed International Foundation and progressed to BSc (Hons) Management at SOAS, University of London



* If your level of English is IELTS 4.5, you will study towards the maximum number of English language credits. If you have a higher level, you may study fewer or no English language modules and more optional modules.

International Foundation

Science and Engineering - IFSE

- > Gain practical experience in fully-equipped university laboratories including London Metropolitan University's Superlab.

What will I study?

You will need to earn 120 credits from the following module options to successfully complete your pathway programme:

Core modules

English Language for Foundation Study (0-45 credits)*
Introductory Mathematics for the Sciences (15 credits)

Engineering pathway:

Electricity, Electrical Fields and Electromagnetism (15 credits)
Further Mathematics for the Sciences (15 credits)
Introduction to Mechanics, Power and Materials (15 credits)
Thermal Physics and Dynamics (15 credits)

Biochemistry pathway:

Biochemistry and Further Chemistry (30 credits)
Introduction to Biology (15 credits)
Introduction to Chemistry (15 credits)
Science Foundation Project (15 credits)

Progress to **80+** universities. Find out more online www.intostudy.com/into-london/IFSE

Social Sciences and Media - IFSSM

- > Develop independent study skills through a media project and analyse key concepts in social sciences.

What will I study?

You will need to earn 120 credits from the following module options to successfully complete your pathway programme:

Core modules

Critical Thinking and Communication Skills (15 credits)
English Language for Foundation Study (0-45 credits)*
Psychology (15 credits)
Sociology (15 credits)

Optional modules

Economics (15 credits)
Global Issues (15 credits)
Introduction to Law and Legal Systems (15 credits)
Marketing (15 credits)
Media and Communications (15 credits)
Media Project (15 credits)
Politics and Political Systems (15 credits)

Progress to **60+** universities. Find out more online www.intostudy.com/into-london/IFSSM

* If your level of English is IELTS 4.5, you will study towards the maximum number of English language credits. If you have a higher level, you may study fewer or no English language modules and more optional modules.

Progress to Year 1 of an undergraduate degree at a UK university

Start date

3 term: Sep or Jan
4 term: Jun or Sep

English language entry requirements*

3 term: IELTS 4.5 (with a minimum of 4.0 in all subskills) or equivalent
4 term: IELTS 4.0 (with a minimum of 4.0 in all subskills) or equivalent

Age requirement

16 years and above**

* If you do not meet the minimum English language requirements, you should apply for our Academic English course. See below for more information.

** All students commencing courses on a published September start date must be 16 years old by 01 September that calendar year. All students commencing courses for the January start date must be 16 by 01 September 2019.

INTO London students have previously received offers from:

University of Leeds,

 top 100

in the world

(QS World University Rankings 2020)

King's College London,

 top 100

in the world for Biological Sciences

(QS World University Rankings by Subject 2019)

Goldsmiths, University of London,

 7th

in the world for Communication and Media Studies

(QS World University Rankings by Subject 2019)

Find your course

Progressing from Foundation to university

The following table provides information about the typical grade ranges each university will require from an INTO London student for them to receive an offer of a place in September 2021. We've only included the details for some of the most popular universities and subject areas our students have progressed to. Full information on exact progression requirements will be provided to each enrolled student as part of the support for their application to each university.

University	Accounting and Finance › Accounting › Economics › Finance › Investment › Mathematics	Architecture › Architecture › Construction Management › Quantity Surveying	Art and Design › Animation › Fashion Design* › Fashion Marketing /Management › Fine Art › Graphic Design › Illustration › Photography › Textiles*	Business and Management › Business Studies › Human Resource Management › Management › Marketing	Computing › Business Information Systems › Computer Games Design › Computing › Information Systems	Engineering › Aeronautical › Aerospace › Automotive › Chemical › Civil › Electrical › Mechanical › Petroleum › Renewable › Software	Hospitality and Tourism › Events Management › Hospitality Management › Tourism Management	Humanities › Archaeology › Development Studies › Education › Geography › History › Liberal Arts › Modern Languages › Music*	Law › Criminology › Law	Media › Advertising › Digital Media › Film Production › Journalism › Media Studies	Psychology › Psychology	Science › Biological and Biomedical Sciences › Chemistry › Pharmacology and Pharmaceutical Science › Physics › Zoology	Social Science › Criminology › International Relations › Politics › Sociology	Sport and Exercise › Exercise and Sport Sciences
Aston University	60-70%	70% or above	-	60-70%	70% or above	70% or above	-	60-70%	60-70%	-	70% or above	60-70%	60-70%	-
Birkbeck, University of London	60-70%	-	-	60-70%	60-70%	60-70%	-	60-70%	60-70%	60-70%	60-70%	60-70%	60-70%	-
Brunel University	50-60%	-	60-70% P	50-60%	50-60%	50-60%	-	50-60%	50-60%	50-60%	50-60%	50-60%	50-60%	50-60%
Cardiff University	60-70%	70% or above	-	60-70%	60-70%	60-70%	-	60-70%	60-70%	60-70%	60-70%	60-70%	60-70%	-
Coventry University	Pass to 50%	Pass to 50%	Pass to 50%	Pass to 50%	Pass to 50%	Pass to 50%	Pass to 50%	Pass to 50%	Pass to 50%	Pass to 50%	Pass to 50%	Pass to 50%	Pass to 50%	Pass to 50%
Goldsmiths, University of London	60-70%	-	60-70%	60-70%	60-70%	-	-	-	60-70%	60-70%	60-70%	-	60-70%	-
Keele University	50-60%	-	-	50-60%	60-65%	-	-	50-65%	60-70%	50-60%	60-70%	60-70%	50-65%	-
Kingston University	60-70%	60-70%	55-65% I	60-70%	60-70%	60-70%	-	50-60%	60-70%	50-60%	60-70%	60-70% I	50-60%	-
Lancaster University	70% or above	-	70% or above	70% or above	70% or above	70% or above	70% or above	70% or above	70% or above	70% or above	70% or above	70% or above	70% or above	70% or above
Loughborough University	60-70%	70% or above	70% or above	70% or above	60-70%	70% or above	-	60-70%	60-70%	70% or above	70% or above	70% or above	60-70%	60-70%
Manchester Metropolitan University	50-60%	70% or above P	50-60%	50-60%	50-60%	50-60%	50-60%	50-60%	50-60%	50-60%	50-60%	50-60%	50-60%	50-60%
Middlesex University	60-70%	-	60-70% P	60-70%	60-70%	60-70%	60-70%	60-70%	70% or above	60-70%	-	-	60-70%	60-70%
Newcastle University London	70% or above	-	-	70% or above	-	-	-	-	-	-	-	-	-	-
Northumbria University	50-60%	50-60%	50-60%	50-60%	50-60%	50-60%	50-60%	50-60%	50-60%	50-60%	50-60%	50-60%	50-60%	50-60%
Oxford Brookes University	50-60%	60-70%	50-60%	50-60%	50-60%	60-70%	50-60%	50-60%	50-60%	50-60%	60-70%	50-60%	50-60%	50-60%
Queen Mary, University of London	70% or above	-	-	60-70%	70% or above	70% or above	-	70% or above	-	-	-	60-70%	70% or above	-
Queen's University Belfast	60-70%	70% or above	-	60-70%	60-70%	60-70%	-	60-70%	70% or above	-	60-70%	65-70%	60-70%	-
Regent's University London	50-60%	-	50-60% P I	50-60%	-	-	50-60%	50-60%	-	50-60% I	50-60%	-	50-60%	-
Royal Holloway, University of London	60-70%	-	-	60-70%	60-70%	60-70%	-	60-70%	70% or above	60-70%	70% or above	60-70%	60-70%	-
SOAS, University of London	70% or above	-	-	70% or above	70% or above	-	-	70% or above	70% or above	-	-	70% or above	70% or above	-
Swansea University	50-60%	50-60%	50-60%	50-60%	50-60%	50-60%	50-60%	50-60%	50-60%	50-60%	50-60%	50-60%	50-60%	50-60%
University of Aberdeen	60-70%	-	-	60-70%	60-70%	60-70%	-	60-70%	70% or above	-	60-70%	60-70%	60-70%	60-70%
University of Birmingham	60-70%	-	-	60-70%	-	70% or above	-	60-70%	70% or above	-	70% or above	70% or above	60-70%	60-70%
University of Brighton	50-60%	60-70% P I	50-60% P I	50-60%	50-60%	50-60%	50-60%	50-60% I	50-60%	50-60%	50-60%	50-60%	50-60%	50-60%
University of Dundee	50-60%	50-60%	50-60%	50-60%	50-60%	50-60%	-	50-60%	50-60%	-	50-60%	50-60%	50-60%	-
University of Essex	60-70%	-	-	60-70%	60-70%	60-70%	55-70%	60-70%	60-70%	60-70%	60-70%	60-70%	60-70%	60-70%
University of Kent	60-70%	70% or above P	60-70%	60-70%	60-70%	60-70%	-	60-70%	70% or above	60-70%	60-70%	60-70%	60-70%	-
University of Leicester	70% or above	-	-	70% or above	60-70%	60-70%	-	60-70%	70% or above	60-70%	-	60-70%	60-70%	-
University of Lincoln	60-70%	-	50-60%	50-60%	50-60%	50-60%	50-60%	50-60%	50-60%	50-60%	60-70%	50-60%	50-60%	60-70%
University of Southampton	70% or above	-	60-70%	70% or above	70% or above	70% or above	-	70% or above	70% or above	-	70% or above	70% or above	70% or above	-
University of Strathclyde	60-70%	60-70%	60-70%	60-70%	60-70%	60-70%	60-70%	60-70%	60-70%	60-70%	60-70%	60-70%	60-70%	60-70%
University of Surrey	60-70%	-	-	60-70%	60-70%	60-70%	60-70%	-	60-70%	60-70%	60-70%	60-70%	60-70%	60-70%
University of Sussex	60-70%	-	-	60-70%	60-70%	60-70%	-	60-70%	60-70%	60-70%	60-70%	60-70%	60-70%	-
University of the West of England Bristol	50-60%	60-70%	50-60% P	50-60%	50-60%	60-70%	50-60%	50-60%	50-60%	50-60%	50-60%	50-70% I	50-60%	50-60%
University of Westminster	50-60%	60-70% P I	50-60% P I	50-60%	50-60%	-	50-60%	50-60%	50-60%	60-70%	50-60%	50-60%	50-60%	-
University of York	70% or above	-	-	70% or above	70% or above	-	-	70% or above	70% or above	70% or above	70% or above	70% or above	70% or above	-

P Portfolio assessed
I Interview required

* For progression to these subject areas, you may need to demonstrate evidence of previous experience in these specialisms. Universities reserve the rights to change the entry requirements. For the latest information contact the Centre. Previous educational performance and personal statements may be considered in your university admission by some universities.

Progress to Year 2 of an undergraduate degree at a UK university

Start date

3 term: Sep or Jan
4 term: Sep or Jun
5 term: Aug

English language entry requirements*

3 term: IELTS 5.5 (with a minimum of 5.5 in writing) or equivalent
4 term: IELTS 5.0 (with a minimum of 5.0 in writing) or equivalent
5 term: IELTS 4.5 (with a minimum of 4.5 in writing) or equivalent

Age requirement

16 years and above**

* If you do not meet the minimum English language requirements, you should apply for our Academic English course. See below for more information.

** All students commencing courses on a published September start date must be 16 years old by 01 September that calendar year. All students commencing courses for the January start date must be 16 by 01 September 2019.

92%

of students passed their International Year One, of which 100% were eligible to progress to UK Higher Education

(1,718 IYO cohort)

INTO London students have previously received offers from:

University of Aberdeen, **top 20** in the UK for Business and Management Studies (The Complete University Guide 2020)

Newcastle University, **top 30** in the UK (The Times and The Sunday Times Good University Guide 2019)

International Year One

Business - IYOB

- > Guaranteed conditional offer of a Year 2 place at Aston University's triple accredited Business School.
- > Degree options include Business, Economics, Finance, Human Resource Management and Accounting.

What will I study?

You will need to earn 120 subject credits from the following module options to successfully complete your pathway programme:

Business and Management (15 credits)	Intermediate Law (15 credits)
English Language for Foundation Study (0-30 credits)	International Marketing or Financial Reporting and Decision Making (15 credits)
Intermediate Accounting (15 credits)	Quantitative Methods (15 credits)
Intermediate Economics (15 credits)	Study Skills (15 credits)
Intermediate Finance (15 credits)	

Progress to **45+** universities. Find out more online at www.intostudy.com/into-london/IYOB

Progression options

If you can't see the university you want to study at, or want to look at all progression universities, check our full list at www.mvin.to/ProgressionOptions



Guaranteed conditional offer

Receive a conditional offer for a Year 2 place at Aston University's Business School when you study International Year One at INTO London.

Key facts about Aston University



Top 100 in the world for Business and Management Studies*



Top 200 in the world for Accounting and Finance*



Triple accredited Business School



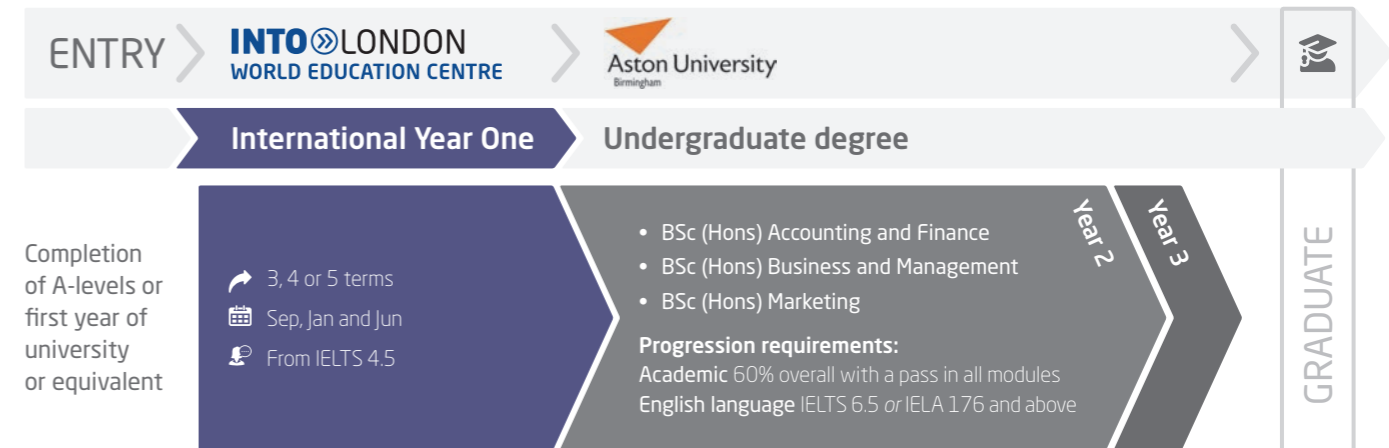
Gold for teaching quality**



£2,500 Aston University partnership scholarships available to high-achieving students at INTO London.†
www.intostudy.com/into-london/scholarships

† Awarded to the students with the best overall performance on the International Year One in Business. Recipient will undertake ambassadorial duties and student profiling for marketing purposes.

*QS World University Rankings by Subject 2019 **Teaching Excellence Framework 2017



BSc (Hons) Accounting and Finance

This degree focuses on the essential role of accounting in decision-making. You will learn about the relationship between management teams and the monitoring and planning of an organisation's financial resources.

- Gain experience for your CV with the integrated placement year.
- Accredited with Professional accounting bodies including ACCA, CIMA and ICAEW.
- Traditional teaching is supported by a virtual learning environment. For example, all business students undertake the Business Game module and compete in teams in a computer simulation exercise that culminates in a presentation to a panel of internal employers.

BSc (Hons) Business and Management

Develop a comprehensive understanding of the various functions of management, alongside the opportunity to specialise in areas of business that interest you.

- Gain experience for your CV with the integrated placement year
- Extensive use of group working and presentations to prepare you for the reality of working life. Such work develops your team working and negotiating skills.
- Former graduates have gone on to work at companies such as Samsung, Coutts, Amazon, Hewlett Packard, Santander, KPMG, Lloyds Bank and Google.

BSc (Hons) Marketing

Develop your understanding of the core concepts of marketing theory and the ability to apply it to real life cases.

- Gain experience for your CV with the integrated placement year.
- Marketing ranked 15th in the UK (The Complete University Guide 2020).
- Former graduates have gone on to work at companies such as BMW, Ford Motor Company, Jaguar Land Rover, Royal Bank of Scotland, Amazon, Lloyds Bank and Capgemini.
- Graduates can gain entry to the Chartered Institute of Marketing (CIM), Diploma in Professional Marketing qualification.

Progress to a postgraduate degree at a UK university

Start date

2 term: Jan or Apr
3 term: Sep or Jan

English language entry requirements*

2 term: IELTS 6.0 (with a minimum of 6.0 in writing and 5.5 in all other subskills) or equivalent
3 term: IELTS 5.5 (with a minimum of 5.5 in all subskills) or equivalent

Age requirement

17 years and above

* If you do not meet the minimum English language requirements, you should apply for our Academic English course. See below for more information.

INTO London students have previously received offers from:

University of East Anglia,
15th

in the UK

(The Times and The Sunday Times Good University Guide 2019)

University of Dundee,
top 30

in the UK

(The Times and The Sunday Times Good University Guide 2019)

Pre-Master's

Banking and Finance - PMBF

> Study in a worldwide banking and finance hub with excellent industry connections.

What will I study?

You will need to earn 120 credits from the following module options to successfully complete your pathway programme:

Academic English for Graduate Study (0 credits)	Economics and International Trade (15 credits)*
Academic English for Taught Postgraduate Study (0 credits)*	Final Decision Making and Investment Analysis (15 credits)
Accounting: Financial, Management and Reporting (15 credits)*	International Markets and Regulation (15 credits)
Banking, Finance and Risk (15 credits)	Research Project (30 credits)
Econometrics, Modelling and Financial Methods (15 credits)	

Progress to **55+** universities. Find out more online www.intostudy.com/into-london/PMBF

Business Administration - PMBA

> Study in one of the world's business capitals and immerse yourself in the industry through interactive field trips.

What will I study?

You will need to earn 120 credits from the following module options to successfully complete your pathway programme:

Academic English for Graduate Study (0 credits)	Econometrics, Modelling and Financial Methods (15 credits)
Academic English for Taught Postgraduate Study (0 credits)*	Economics and International Trade (15 credits)
Accounting: Financial, Management and Reporting (15 credits)*	Human Resource Management (15 credits)
Business Administration (15 credits)*	International Marketing (15 credits)
	Research Project (30 credits)
	Statistical Analysis for Business (15 credits)*

Progress to **80+** universities. Find out more online www.intostudy.com/into-london/PMBA

* Only applies to the 3 term pathway.

Progressing from Pre-Master's to university

The following table provides information about the typical grade ranges you need to achieve to be offered a place at university in September 2021. We've only included the details for some of the most popular universities and subject areas our students have progressed to.

University	Accounting and Finance		Business and Management		Management-related subjects		Social Science
	PMBF	PMBA	PMBF	PMBA	PMBF	PMBA	PMBA
Aston University	*60-70%	*60-70%	*60-70%	*60-70%	*60-70%	*60-70%	*60-70%
Birkbeck, University of London	*60-70%	*60-70%	*60-70%	*60-70%	*60-70%	*60-70%	*60-70%
Coventry University	Pass	Pass	Pass	Pass	Pass	Pass	Pass
Goldsmiths, University of London	-	-	60-70%	60-70%	60-70%	60-70%	60-70%
Keele University	*60-70%	*60-70%	*60-70%	*60-70%	*60-70%	*60-70%	*60-70%
Kingston University	*60-70%	*60-70%	*60-70%	*60-70%	*60-70%	*60-70%	*60-70%
Loughborough University	70% or above	70% or above	70% or above	70% or above	70% or above	70% or above	70% or above
Manchester Metropolitan University	60-70%	60-70%	60-70%	60-70%	60-70%	60-70%	60-70%
Middlesex University	50-60%	50-60%	50-60%	50-60%	50-60%	50-60%	50-60%
Newcastle University London	-	-	-	70% or above	-	70% or above	-
Northumbria University	50-60%	50-60%	50-60%	50-60%	50-60%	50-60%	50-60%
Queen Mary, University of London	-	*60-70%	-	*60-70%	-	*60-70%	-
Regent's University London	*50-60%	*50-60%	*50-60%	*50-60%	*50-60%	*50-60%	*50-60%
SOAS, University of London	*60-70%	*60-70%	-	-	-	-	-
Swansea University	*50-60%	-	*50-60%	*50-60%	*50-60%	*50-60%	-
University of Brighton	50-60%	50-60%	50-60%	50-60%	50-60%	50-60%	50-60%
University of Dundee	50-60%	*50-60%	50-60%	*50-60%	50-60%	*50-60%	*50-60%
University of Essex	*60% or above	*60% or above	*60% or above	*60% or above	*60% or above	*60% or above	*60% or above
University of Kent	*60-70%	*60-70%	*60-70%	*60-70%	*60-70%	*60-70%	*60-70%
University of Lincoln	*50-60%	*50-60%	*50-60%	*50-60%	*50-60%	*50-60%	*50-60%
University of Sussex	*60-70%	*60-70%	*60-70%	*60-70%	*60-70%	*60-70%	*60-70%
University of Westminster	50-60%	50-60%	50-60%	50-60%	50-60%	50-60%	60-70%
University of the West of England Bristol	*50-60%	*50-60%	*50-60%	*50-60%	*50-60%	*50-60%	*50-60%

* Previous educational performance and personal statements may be considered in your university admission by some universities

Improve your English language skills to prepare for further academic study

Start date

16 weeks: Aug
1-4 terms: Sep, Jan, Apr or Jun

English language entry requirements

From: IELTS 4.0

Age requirement

16 years and above

Class size and hours

Maximum of 16 students
25 hours per week minimum

EN Academic English

> For students who need to increase their IELTS level in order to progress to university. This intensive course offers rapid progress of up to one IELTS band per term in order to progress to your INTO pathway course or for entry to some universities.

Course features

- You will learn through face-to-face teaching and online learning to communicate effectively in English and improve your reading, writing, speaking and listening skills.
- A diverse social programme and effective academic content will help you to develop fluency and confidence.
- Access INTO's interactive online learning platform, MyINTO, outside of class to practise your English language skills, complete tasks and engage with classmates.
- Developed in partnership with Cambridge English, the world leader in language assessment, INTO English Language Assessment (IELA) provides a standardised online assessment of all four core language skills throughout your studies. The IELA test is available to you as an additional form of assessment and allows you to choose from a wide range of Higher Education institutions.



EN General English

> For students who want to increase their confidence in using everyday English for general life, work, socialising and travel in the UK.

Special features

- Build your confidence in core English language skills in everyday situations, from speaking, reading, listening and writing to vocabulary and grammar.
- Year-round courses have flexible start dates and course lengths, from 2-48 weeks
- Study in the heart of the City of London.
- Take part in a range of activities and socialise with students from all over the world to build on your English language ability and make new friends.

Improve your English language skills for work, socialising and travel

Start date

Monthly

English language entry requirements

All English levels, from elementary to upper intermediate.

Age requirement

16 years and above

Class size and hours

Maximum of 16 students

Dates and prices

The cost of your programme may vary depending on factors including the pathway chosen and programme length. The following guide to costs is based on pricing for the current academic year and provides an indication of the cost of attendance for some of our pathways. For specific cost information, please refer online: www.intostudy.com/into-london/courses

Estimated cost of attendance based on prices for current academic year 2019-2020						
Study length	Tuition	Accommodation	Books and fees	Airport pick up	Insurance	Total
Academic programmes						
International Foundation (3 term)	£18,535	£7,990-£15,405	£390-£790	£130-£160	£357	£27,402-£35,247
International Foundation (4 term)	£22,965	£11,280-£19,965	£440-£840	£130-£160	£466	£35,281-£44,396
International Year One (3 term)	£18,535	£7,990-£15,405	£390	£130-£160	£357	£27,402-£34,847
International Year One (4 term)	£22,965	£11,280-£19,965	£440	£130-£160	£466	£35,281-£43,996
Pre-Master's (2 term)	£13,385	£4,935-£9,480	£390	£130-£160	£196	£19,036-£23,611
Pre-Master's (3 term)	£18,535	£7,990-£15,405	£390	£130-£160	£357	£27,402-£34,847
English language courses						
1 term*	£4,430	£2,475-£4,345	£80	£130-£160	£122	£7,237-£9,137
16 weeks	£7,090	£4,395-£7,400	£120	£130-£160	£145	£11,880-£14,915

Start months and term dates			
Academic programmes		Academic English	
June (4 term)	Mon 29 Jun 2020-Fri 25 Jun 2021	August (16 weeks)	Mon 03 Aug 2020-Fri 11 Dec 2020
September (3 term)	Mon 28 Sep 2020-Fri 25 Jun 2021	September (1 term)	Mon 28 Sep 2020-Fri 11 Dec 2020
September (4 term)	Mon 28 Sep 2020-Fri 03 Sep 2021	January (1 term)	Mon 11 Jan 2021-Fri 16 Mar 2021
January (2 term)	Mon 11 Jan 2021-Fri 25 Jun 2021	April (1 term)	Mon 06 Apr 2021-Fri 18 Jun 2021
January (3 term)	Mon 11 Jan 2021-Fri 03 Sep 2021	June (1 term)	Mon 28 Jun 2021-Fri 10 Sep 2021
April (2 term)	Mon 12 Apr 2021-Fri 03 Sep 2021		

Prices shown are for the current academic year of 01 September 2019 - 31 August 2020 and for indicative purposes only. We will confirm all tuition dates and prices for the academic year 2020/2021 on or before 20 January 2020, with the tuition prices being subject to a maximum increase of up to 5% on the prices for the current academic year. For full details of term dates, please visit the relevant course page at www.intostudy.com/into-london/courses

* The price will depend on your start date and length of study. Prices shown are only for one term. Vacation weeks in between terms are extra and will be charged at the weekly accommodation price.




Apply via your local INTO educational counsellor

If you would like us to put you in contact with one of our counsellors, please contact us.



Apply online

Complete our online application form: apply.intostudy.com



Need some help with your tuition fees?

Check to see if you're eligible for a scholarship: www.intostudy.com/into-london/scholarships

Discover more online

For students:
www.intostudy.com/into-london
For education counsellors:
partnerportal.intoglobal.com/into-london

Connect with us



Through innovative partnerships with leading universities, we expand opportunities for higher education, ensuring success and transforming the lives of our students and staff.

INTO GIVING

Working across the globe, INTO Giving supports projects that increase access to education and improve the quality of teaching and learning. For more information visit www.into-giving.com

Contact us

Enquiries and applications:
ukes@intoglobal.com
or +44 1273 876040

Visit the Centre:
intolondon@intoglobal.com
or +44 203 691 5600

Centre address details:
INTO London
102 Middlesex Street
London
E1 7EZ
United Kingdom

© INTO London World Education Centre Ltd, September 2019. Every effort is made to ensure that the information provided in this document is correct at the time of publication. However, from time to time there may be occasions where some of the information has changed since the date of publication. The most up to date information can be found on our website at www.intostudy.com/into-london - please refer to this before submitting your application. If, in our opinion, we consider that any change has been made which has a material impact on any offer that has been made to you to study with us we will inform you of these changes in writing. The information provided in this document is subject to INTO London's terms and conditions which can be accessed at www.intostudy.com/into-london/terms

INTO London World Education Centre Ltd, registered number 7956509.
Registered office: One Gloucester Place, Brighton, East Sussex, BN1 4AA, UK.

Education provider sponsor number 6FY6FQB1
(INTO London World Education Centre Ltd is a branch campus of INTO Manchester Limited)

