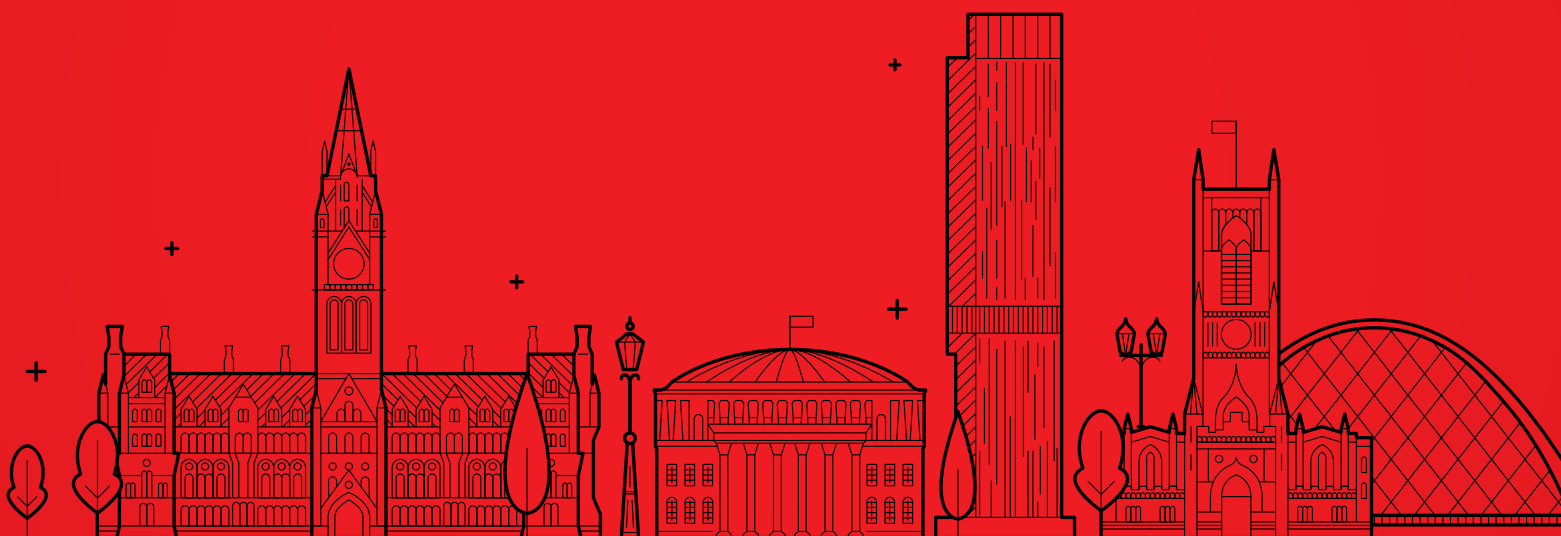


INTO» MANCHESTER

2020-21



Discover your perfect university

Pathway programmes for international students

NCUK
THE UNIVERSITY CONSORTIUM





Find a university to suit you

Welcome to INTO Manchester, where university success starts with the best preparation.

For almost any subject you wish to study, we can offer you a guaranteed route to up to 16 universities in the UK. From Business and Law, to Science and Engineering – there are so many options. If you're not sure what subject is right for you, don't worry. You're not the first student we've helped to make this decision – over 3,500 students have progressed to their chosen university with our help.

When you choose INTO Manchester, you'll be choosing one of the UK's most popular study destinations. This vibrant city has one of the largest student communities in the UK*, so you'll feel at home right from the start. You'll experience a truly international education, studying alongside students from as many as 70 nationalities. And with our Study Centre located in the heart of the city, student life couldn't be easier!

Choose #INTOManchester and open up a lifetime of opportunities.

Best UK city to live in and 35th in the world (Economist Global Liveability Survey 2018)

100+ nationalities have studied at INTO Manchester

"At INTO Manchester they really do help you and you're always welcome to meet the teachers any time, their doors are always open."

Bryan, Malaysia
Graduated with BSc (Hons) Management from The University of Manchester



"I would definitely recommend INTO Manchester because of the amazing support they have. In terms of academia, applications or wellbeing you know there's always someone there for you."

Springsfield, Singapore
Graduated with LLB (Hons) Law from the University of Birmingham

"I think INTO Manchester provides a great transition between school and university. It helped me adapt to a new environment, become independent and learn to cope with being away from my parents for the first time."

Reem, Bahrain
Graduated with BEng (Hons) Civil Engineering from The University of Manchester



"INTO Manchester acted as a firm stepping stone during the year prior to university and laid the foundation for successful completion of my degree at a prestigious institute. The whole experience has given me an edge in my job."

Jahanzab, Pakistan
Graduated with BA (Hons) Management and Leisure from The University of Manchester



* Higher Education Statistics Agency 2016-2017

Guaranteed progression

Choosing to study abroad is a big decision, but with INTO Manchester you can relax knowing we are here to support you on your journey towards university.

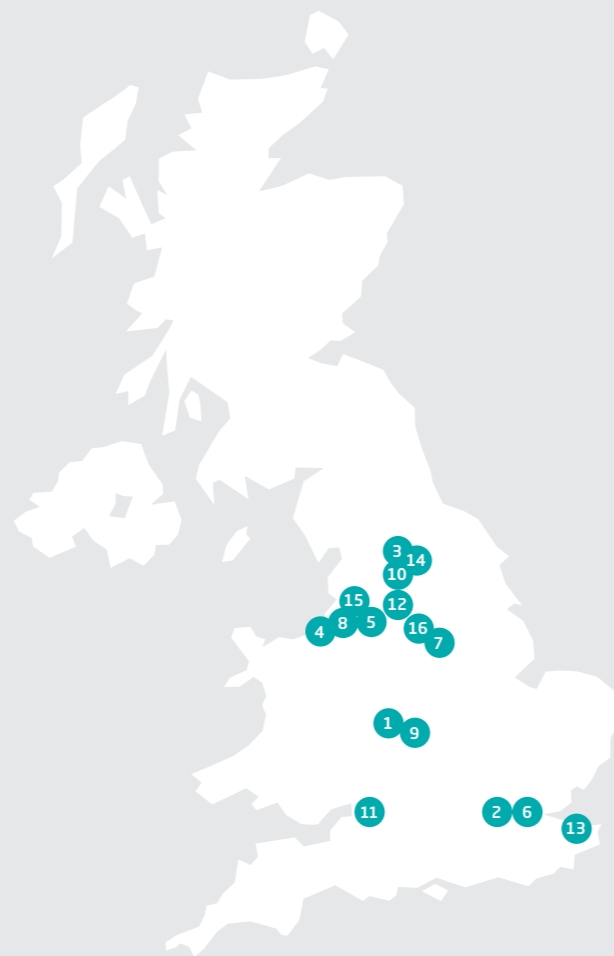
Choose your university

Thanks to our partnership with NCUK, if you successfully complete your pathway programme you will have guaranteed progression to one of these 16 universities*. With many of the universities specialising in different subject areas, and with locations varying from bustling city centre to beautiful campuses, there will be an NCUK university to suit you.

You also have the freedom and flexibility to apply to other UK universities if you prefer. Can't decide? We're here to help. Whenever you have any questions about university applications or need advice about study options, our Student Placement Team are here to support you.

- 1  Aston University
Birmingham
- 2  Kingston University
London
- 3  LEEDS BECKETT UNIVERSITY
United Kingdom
- 4  LIVERPOOL JOHN MOORES UNIVERSITY
- 5  Manchester Metropolitan University
- 6  Queen Mary University of London
- 7  Sheffield Hallam University
- 8  MANCHESTER 1824
The University of Manchester
- 9  UNIVERSITY OF BIRMINGHAM
- 10  UNIVERSITY OF BRADFORD
- 11  University of BRISTOL
- 12  University of HUDDERSFIELD
Inspiring tomorrow's professionals
- 13  University of Kent
- 14  UNIVERSITY OF LEEDS
- 15  University of Salford
MANCHESTER
- 16  The University of Sheffield.

60 UK universities have welcomed over 3,500 INTO Manchester students



* Progression options from International Year One are possible to 10 universities. For more details see page 16.

"The most important thing I learned from studying in the UK was continuous self-development. The British Education system is the best in the world and employees perceive my qualification as a great achievement."

Samal, Kazakhstan
Graduated with BSc (Hons) Management from The University of Manchester and MSc Accounting and Finance from The London School of Economics



"After a year at INTO Manchester my English really improved. We were taught critical thinking and research skills, which are really important when you get to university."

Soon Kiat, Malaysia
Graduated with BSc (Hons) International Business and Economics from The University of Manchester with First Class Honours

51%
progressed to a
Top 15 UK university

(Times Higher Education World University Rankings 2019)

67%
progressed to a
Top 50 UK university

(Times Higher Education World University Rankings 2019)

77%
progressed to a
NCUK university

(Times Higher Education World University Rankings 2019)

INTO Manchester UK Progression Destinations 2017-2018

Placement services

Our dedicated Student Placement Team at INTO Manchester will provide you with friendly and practical counselling, assisting you with every stage of the university application process including:

- advising you on your study options
- helping with your university application
- helping with your personal statement
- arranging for you to visit universities.

"With over 20 years' experience of the UCAS system we are the main support for students through every step of the process. We'll help you select the university that's right for you, create outstanding personal statements or give you the details of your progression course. We have regular drop-in sessions but you can also just visit our office and ask questions."

Student Placement Team
INTO Manchester

We have already helped thousands of students prepare for university

Are you ready to join this list of top students?

| Destination university | Name of degree | Student information | Country |
|------------------------------------|-----------------------------------|---------------------|--------------|
| University of Leeds | Mechanical Engineering | Abdelrahman | Saudi Arabia |
| Manchester Metropolitan University | International Business Management | John | Nigeria |
| The University of Manchester | Chemical Engineering | Ghada | Jordan |
| University of Salford | Architecture | Raghd | Libya |
| The University of Sheffield | East Asian Studies | Minjun | South Korea |
| Aston University | Accounting for Management | Jin | South Korea |
| Kingston University | Accounting and Finance | Zhanel | Kazakhstan |
| Queen Mary, University of London | Accounting and Management | Sae | Japan |

Life at the INTO Centre

Are you ready to live and learn in one of the UK's biggest and best student cities? With modern facilities in a historic building, an exciting programme of activities and a team of friendly staff – INTO Manchester has it all!

Your Study Centre

The INTO Manchester Centre offers you the chance to study in one of the most exciting and diverse cities in the world. Located in Bridgewater House, an impressive Edwardian building, the Centre is right in the heart of bustling Manchester. Most of your classes will take place here and you'll find everything you need to study and socialise in one location. Our academic programmes here are taught in a similar way to what you'll experience at university so that you'll be ready when you progress. INTO Manchester's modern learning Centre includes:

- more than 40 teaching rooms featuring digital whiteboards
- well-equipped computing suites
- free Wi-Fi and internet access throughout
- 24/7 access to our virtual learning environment to download resources
- a Learning Resource Centre, with a wide range of online journals, books and excellent study materials
- silent study areas.

If you want a break between classes, relax in the break-out spaces where you can play table football with friends, or head out to the many cafés and shops on your doorstep. You'll soon feel right at home!

Supporting you

Studying in another country can be a big adjustment, and we're here to help you. Our friendly Student Services team will help take care of practicalities like accommodation, visa support and any questions about your course, so you can focus on your studies. You'll find our orientation programme in your first week invaluable, covering everything from opening a bank account to getting around the city – giving you all the information you need to help you settle in to your new life in Manchester.

Your safety is our priority

There's a 24-hour emergency telephone helpline if you need to speak to someone out of office hours. If you're under 18, we offer extra support which includes ensuring your safe transfer from the airport and checking on you each day at the residence where you'll live. You'll also be given a dedicated named person to contact to ensure your wellbeing and receive a copy of our code of conduct, which you must follow; especially outside of class when you'll be unsupervised. For more information, please see guidance for under 18s using the link below:

www.intostudy.com/into-manchester/terms

INTO Manchester has been established for **10 years**



"My advice is quite simple. Balance your academic life and social life – it is the key. You will usually find that you have the highest efficiency when you have both rather than just one of them."

Thi Minh, Vietnam
Graduated with BEng (Hons) Electrical and Electronic Engineering from The University of Manchester



Get involved and make friends

We'll make it easy for you to meet new people and find new, fun things to do. Our staff will organise regular social activities and help you enjoy Manchester to the fullest. By taking part in our social programme, you'll have the chance to meet other students and explore sights in Manchester and the rest of the UK.

We also organise regular sporting activities and student events to help you make great friends and memories, including:

- Chinese New Year
- Christmas
- Easter
- Eid
- Halloween

Gain leadership skills

Take part in the INTO Manchester Leadership and Professional Development Programme to develop skills which can be included on your personal statement for your university application as part of your INTO programme. During workshops over 8 weeks, you'll explore new topics, express opinions in English and improve your team-working abilities. All these skills are useful in life beyond INTO Manchester.

Distance from INTO Centre to...

train stations:
10 minute walk to Manchester Piccadilly
3 minute walk to Manchester Oxford Road

accommodation:
3 minute walk to Liberty Heights
12 minute walk to Liberty Point

city centre:
5 minute walk to nearby supermarkets, restaurants, banks and coffee shops

Chinatown:
8 minute walk

Manchester Airport:
up to 20 minute journey by train

"We look forward to welcoming you to the dynamic city of Manchester. We have a team of experienced staff to help you with both academic matters and day-to-day living so you can concentrate on your studies and make the most of your time with us."

Dawn Abbott, Centre Director

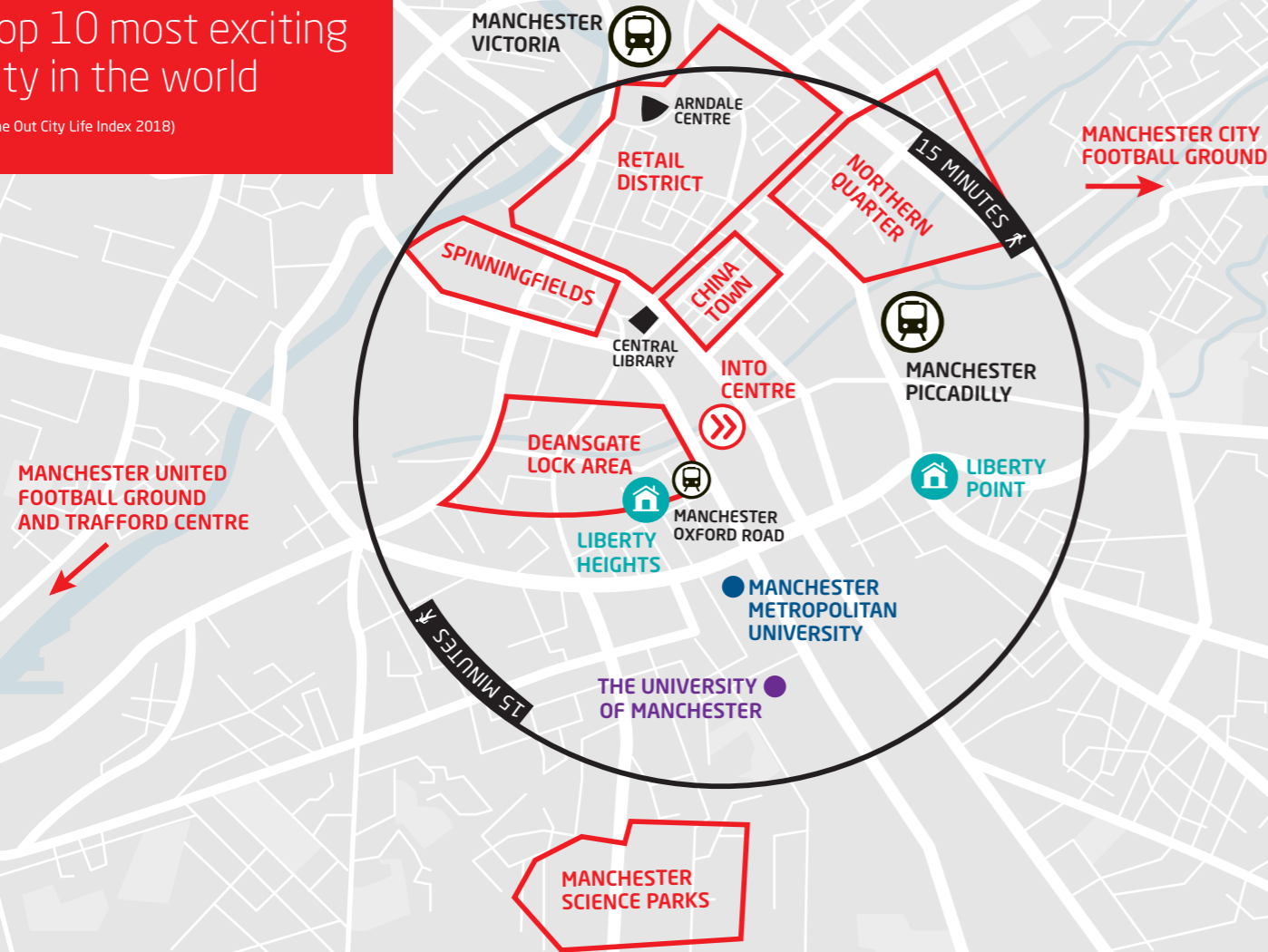


Discover Manchester

A varied mix of music, shopping, sport and a buzzing social scene all wrapped up in one student-focused city. Get ready to explore the UK's capital of the North and one of the most exciting cities in the world.

Top 10 most exciting city in the world

(Time Out City Life Index 2018)



"I have spent most of my adult life in Manchester. It's like a love story: I fell in love, and now I have settled. After two or three months studying in Manchester, I thought I could stay here for a long time."

Nicholas, Malaysia
Graduated with LLB (Hons) Law from The University of Manchester and now runs food and drinks businesses in Manchester



Culture and creativity

When you live in Manchester, you'll be immersed in a diverse world of music, art and fashion. You'll also have access to a bustling social calendar packed with festivals, events, and free activities.

The city has over 30 museums and galleries, including:

- The Whitworth
- Manchester Museum
- Manchester Art Gallery
- Centre for Chinese Contemporary Art
- National Football Museum
- Museum of Science and Industry

The Portico, Chetham and Manchester Central Libraries are also a must-see in a city designated a **UNESCO City of Literature**.

Gourmet to everyday

With over 300 restaurants in the city, there is an exciting range of quality, modern British and international cuisine available, making it easy to find foods from around the world.

From fine dining in **Spinningfields** to street food at the seasonal Maker's Market, you'll find options to suit your mood and budget.

Deansgate offers everything from tapas to traditional British food while the cool cafés of the **Northern Quarter** are a favourite with locals.

Manchester's **Chinatown** is the second largest in Britain and has many Asian restaurants and supermarkets. There are also many restaurants and shops in **Rusholme**, offering South Asian and Middle Eastern cuisine and produce. You'll never run out of exciting options in Manchester!

An iconic sporting city

Manchester is home to two of the biggest names in sport: Manchester United and Manchester City. Manchester United's ground, **Old Trafford**, is the largest club ground in Britain, while Manchester City are based at the striking **Etihad Stadium**.

Fancy getting involved? The city offers a range of state-of-the-art facilities from indoor ski-slopes to velodromes. Sport is at the heart of Manchester.

Getting out and about

Manchester is easy to get around on foot, by bus or by tram. It's also a great base to explore the UK and you can get to London in just two hours by train. **Manchester Airport** has flights to over 200 destinations across the world.

SHOP 'TIL YOU DROP

From the high street to chic boutiques Manchester is the place for fashion

- **Arndale Centre** high street styles
- **Northern Quarter** record shops and vintage boutiques
- **Trafford Centre** over 250 shops under one roof
- **The Avenue** designer labels
- **Afflecks** alternative fashions



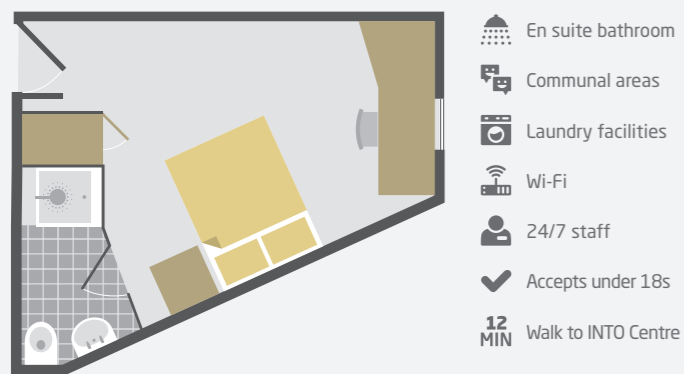
Your home from home

During your INTO programme you'll have a choice of accommodation options, including student residences within easy reach of the INTO Centre and homestay accommodation with approved hosts. It's easy for you to find the perfect place to call home during your pathway.



Liberty Point Premium

This accommodation option for INTO Manchester is just 12 minutes' walk from the INTO Centre, close to many shops, restaurants and cafés nearby.



Supporting you

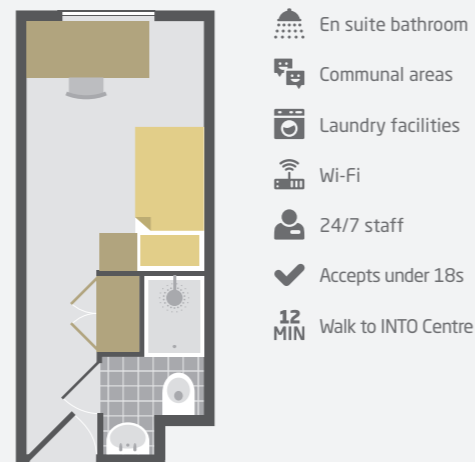
In all the residences, you'll find staff available 24/7 to offer support, and we'll also provide you with a 24-hour emergency helpline telephone number. If you're under 18 and living in INTO managed accommodation, we offer extra support from residential tutors; as well as checking in on you each day at the student residence where you live.

Homestay

This is a unique opportunity to experience British life and culture first hand. You'll have a private room in a carefully selected host's home, sharing mealtimes and living spaces.

Liberty Point

Liberty Point is situated just 12 minutes' walk from the INTO Centre. Its central location means it's close to many restaurants, cafés and shops so there's plenty to see and do in the area.



Liberty Heights*

This studio accommodation option for INTO Manchester is located in the heart of Manchester, just 3 minutes' walk from the INTO Centre.

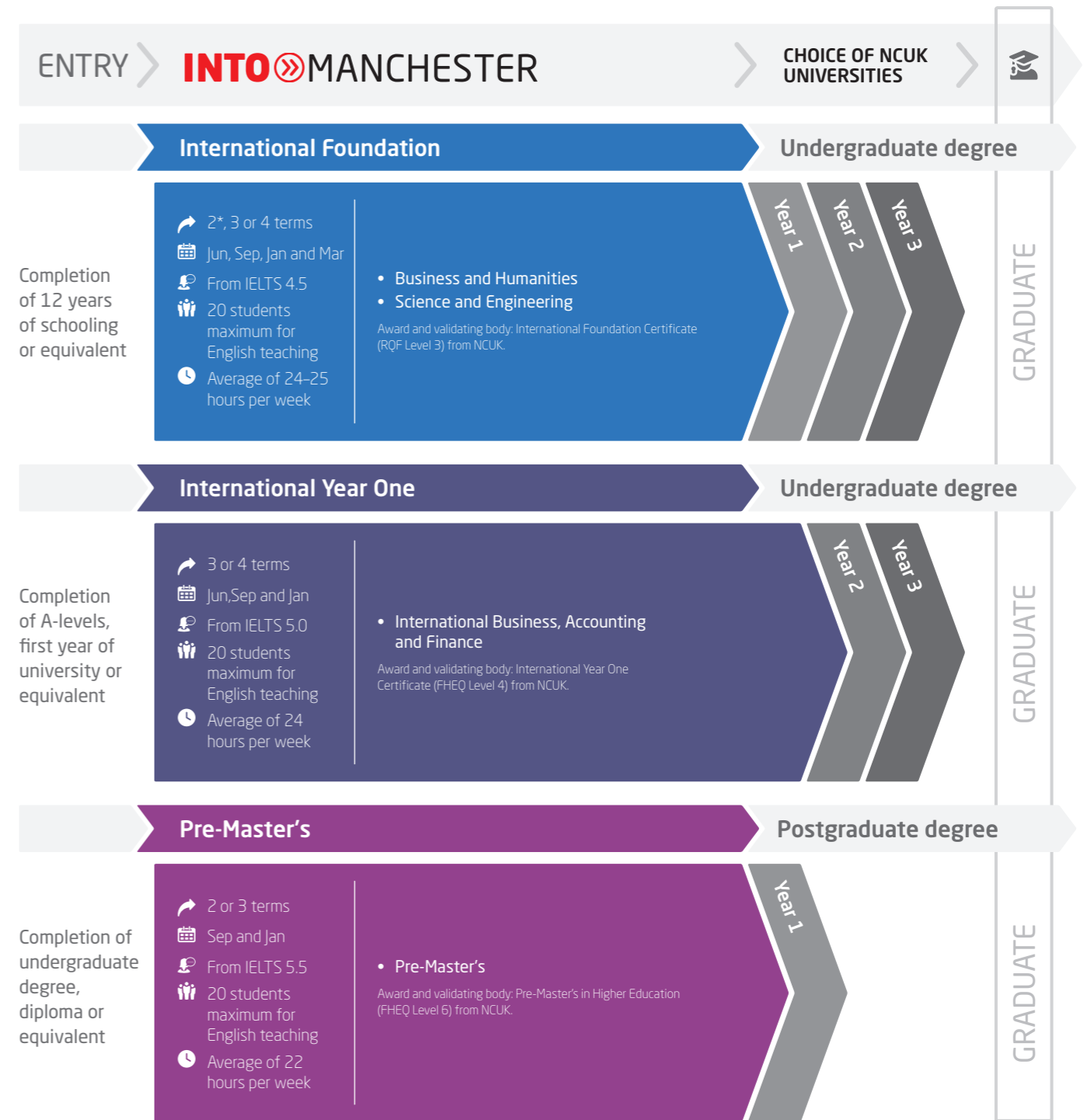


* 18 years and over only

INTO Manchester aims to provide the accommodation requested. However, there may be occasions when INTO Manchester is unable to provide the requested accommodation and reserves the right to offer an alternative type of accommodation instead. The price for any alternative accommodation may differ and will be confirmed to students at the time of their offer.

Choosing your course

Prepare for your university degree with our tailored, academic pathway programmes. You'll benefit from university-style teaching for subject-based modules and high academic standards. Then, when it comes to progressing to your chosen degree, we'll support you with your university application.



* 2 term option is for Business and Humanities pathway only

Please note that course length and start month options may vary depending on the pathway chosen. Please visit www.intostudy.com/into-manchester/courses for full information.

Progress to Year 1 of an undergraduate degree at an NCUK university

Start date

2 term: Mar
3 term: Sep or Jan
4 term: Jun or Sep

English language entry requirements*

2 term: UKVI IELTS 6.0 (with a minimum of 6.0 in writing) or equivalent

3 term: UKVI IELTS 5.0 (with a minimum of 5.0 in writing) or equivalent

4 term: UKVI IELTS 4.5 (with a minimum of 4.5 in writing) or equivalent

Age requirement

16 years and above**

* If you do not meet the minimum English language requirements you should apply for our Academic English course. See page 19 for more information.

** All students commencing courses on a published September start date must be 17 years old by 31 December of that calendar year. For all other start dates, students must be 17 years old on the published start date of the programme.

Prepare to progress to a degree:



universities to choose from



in the top 50 in the UK for Business and Management Studies

(The Complete University Guide 2020)

International Foundation

Business and Humanities

- › Improve your presentation, report writing and exam skills.
- › Learn to construct academic opinions and arguments with confidence in preparation for university study.

What will I study?

English for Academic Purposes and Study Skills
Information Communication Technologies (ICT)*

3 out of 4:**

Business Studies
Economics
Mathematics
Government and Politics

Progress to **1 of 16** universities. Find out more: www.intostudy.com/into-manchester/FBH

Special features

- › Explore business-related theories and their practical application using real-world case studies.
- › Practise professional presentation skills through assessed group work.
- › Improve your reporting skills following independent research projects.
- › Improve your exam-taking techniques through regular assessments.
- › Prepare for classes by reviewing articles and videos uploaded to our online learning environment in advance of classes.


* Compulsory but non-credit bearing.

** The choice of modules depends on your intended degree programme. Some combinations may not be offered.

"For international students, Manchester is the perfect place to study! The Centre is in the city centre and there are lots of student societies and associations."



Manami, Japan
Completed International Foundation and progressed to Events Management at the University of Huddersfield



"I thought what made the experience great were the teachers. They were extremely helpful. I went to them with questions beyond the scope of my studies. I went to them with questions on my interview for Cambridge."

Kai, Singapore
Completed International Foundation in Engineering and Science and currently studying MEng Engineering at the University of Cambridge

International Foundation

Science and Engineering

- › Gain valuable experience and build familiarity with university labs through practical-based learning.
- › Improve your scientific research, reasoning and writing through varied learning techniques practised on the programme.

What will I study?

English for Academic Purposes and Study Skills
Information Communication Technologies (ICT)*

3 out of 5:**

Biology
Chemistry
Further Mathematics
Mathematics
Physics

Progress to **1 of 16** universities. Find out more: www.intostudy.com/into-manchester/FSE

Special features

- › Practise academic writing skills, particularly relating to laboratory reports.
- › Visit different faculties to meet with academic staff and gain an insight into different degree programmes.
- › Progress to a degree offering a placement year option.
- › Attend NCUK university fair held in the Centre.


* Compulsory but non-credit bearing.

** The choice of modules depends on your intended degree programme. Some combinations may not be offered.

"INTO Manchester helped me learn how to write assignments and reports and how to do referencing. So at university I didn't have to face the difficulties that most of my other classmates faced."



Ali, Pakistan
Graduated with BEng (Hons) Computer System Engineering from the University of Sheffield and now working as a Network Engineer



"The most important thing I learned, besides the education, was to build connections with people from different backgrounds. It helped me learn a lot about the world."

Mustafa, Turkey
Graduated with BEng (Hons) Automotive Engineering from Manchester Metropolitan University and now owns his own business in Manchester

Progress to Year 1 of an undergraduate degree at an NCUK university

Start date

3 term: Sep
4 term: Jun

English language entry requirements*

3 term: IELTS 5.0 (with a minimum of 5.0 in writing) or equivalent

4 term: IELTS 4.5 (with a minimum of 4.5 in writing) or equivalent

Age requirement

16 years and above**

* If you do not meet the minimum English language requirements you should apply for our Academic English course. See page 19 for more information.

** All students commencing courses on a published September start date must be 17 years old by 31 December of that calendar year. For all other start dates, students must be 17 years old on the published start date of the programme.

Prepare to progress to a degree:



universities to choose from



in the top 30 in the UK for Chemical Engineering

(The Complete University Guide 2020)

Find your course

International Foundation progression

You can progress to more than 4,000 degrees at 16 universities from this programme.

The following table provides an indication of what grades you need to achieve to be guaranteed a place at university. For the most up-to-date information visit www.intostudy.com/into-manchester/courses

Grade equivalents table

| Grade | % | Academic modules | |
|-------|--------|------------------|------------|
| | | NCUK points | EAP module |
| A* | >80% | 56 points | 7.5 |
| A | 70-79% | 48 points | 7 |
| B | 60-69% | 40 points | 6.5 |
| C | 50-59% | 32 points | 6 |
| D | 40-49% | 24 points | 5.5 |
| E | 35-39% | 16 points | 5 |
| U | <35% | - | - |

| University | Accounting and Finance | Architecture | Art and Design | Business and Management | Computing | Engineering | Hospitality and Tourism | Humanities | Law | Media | Psychology | Science | Social Science | Sport and Exercise |
|------------------------------------|---|---|---|--|---|---|---|---|--|--|--|--|---|---|
| | <ul style="list-style-type: none"> Accounting Economics Finance Investment Mathematics | <ul style="list-style-type: none"> Architecture Construction Management Quantity Surveying | <ul style="list-style-type: none"> Animation Fine Art Graphic Design Illustration Photography Textiles* Fashion Design* Fashion Marketing /Management | <ul style="list-style-type: none"> Business Studies Human Resource Management Management Marketing | <ul style="list-style-type: none"> Business Information Systems Computer Games Design Computing Information Systems | <ul style="list-style-type: none"> Aeronautical Aerospace Automotive Chemical Civil Electrical Mechanical Medical Petroleum Renewable Software | <ul style="list-style-type: none"> Events Management Hospitality Management Tourism Management | <ul style="list-style-type: none"> Archaeology Development Studies Education Geography History Liberal Arts Modern Languages Music* | <ul style="list-style-type: none"> Criminology Law | <ul style="list-style-type: none"> Advertising Digital Media Film Production Journalism Media Studies | <ul style="list-style-type: none"> Psychology | <ul style="list-style-type: none"> Biological and Biomedical Sciences Chemistry Pharmacology Pharmacy and Pharmaceutical Science Physics Zoology | <ul style="list-style-type: none"> Criminology International Relations Politics Sociology | <ul style="list-style-type: none"> Exercise and Sport Sciences |
| Aston University | Grades: AAA-ABB EAP: B | Grades: BBB-BBC EAP: B-C | N/A | Grades: AAA-BBB EAP: B | Grades: ABB-BBB EAP: B | Grades: AAB-BBB EAP: B-C | N/A | Grades: ABB EAP: B | Grades: AAB-BBB EAP: B | N/A | Grades: AAB-ABB EAP: A-B | Grades: AAB-BBB EAP: A-C | Grades: AAB-BBB EAP: B | N/A |
| University of Birmingham | Grades: A*AA-AB EAP: B-C | N/A | N/A | Grades: AAB EAP: B | Grades: A*AA-AAA EAP: C | Grades: A*AA-AB EAP: B-C | N/A | Grades: A*AA-AB EAP: B | Grades: AAA EAP: A | N/A | Grades: AAA EAP: B | Grades: A*AA-AB EAP: A-C | Grades: AAA-ABB EAP: A-B | Grades: AAA-ABB EAP: B |
| University of Bradford | Grades: BBB-BBC EAP: C | N/A | Grades: BBC EAP: C | Grades: BBC EAP: C | Grades: BBB-BBC EAP: C | Grades: AAB-BBC EAP: C | N/A | Grades: BBC-CCC EAP: C | Grades: BBB EAP: C | Grades: BBC EAP: C | Grades: BBC EAP: C | Grades: ABB-BCC EAP: B-C | Grades: BBC-CCC EAP: C | Grades: BBB EAP: B |
| University of Bristol | Grades: A*A*A-A*AA EAP: A-B | N/A | N/A | Grades: AAA-AB EAP: A | Grades: A*A*A EAP: B | Grades: A*A*A-A*AA EAP: B | N/A | Grades: A*A*A-AB EAP: A-B | Grades: A*AA EAP: A | N/A | Grades: A*AA-AAA EAP: A-B | Grades: A*AA EAP: B | Grades: A*AA-AB EAP: A | N/A |
| University of Huddersfield | Grades: BBB EAP: C | Grades: AAB-BBB EAP: C | Grades: BBB EAP: C | Grades: BBB EAP: C | Grades: AAB-BBB EAP: C | Grades: AAB-BBB EAP: C | Grades: BBC-CCC EAP: C | Grades: BBB EAP: C | Grades: BBB-BBC EAP: C | Grades: BBB EAP: C | Grades: BBB EAP: C | Grades: AAB-BBC EAP: A-C | Grades: BBC EAP: C | N/A |
| University of Kent | Grades: AAA-ABB EAP: B | Grades: AAB-BBB EAP: C | Grades: ABB EAP: B | Grades: ABB EAP: B | Grades: AAB-ABB EAP: B | Grades: ABB-BBB EAP: B | N/A | Grades: ABB EAP: B | Grades: AAB-BBB EAP: B | Grades: ABB-BBB EAP: A-B | Grades: AAA EAP: B | Grades: ABB-BBB EAP: B | Grades: AAB-BBB EAP: B | Grades: ABB-BBB EAP: B |
| Kingston University | Grades: ABB-BCC EAP: B-C | Grades: ABB-CCC EAP: C | Grades: BBC EAP: C | Grades: ABB-BBC EAP: C | Grades: BBC-BCC EAP: C | Grades: BBB-CCC EAP: C | N/A | Grades: BBC-CCC EAP: B-C | Grades: ABB-BBC EAP: B-C | Grades: ABB-BBC EAP: B-C | Grades: BBB EAP: B | Grades: ABB-BCC EAP: B-C | Grades: BBC EAP: B | Grades: BCC EAP: C |
| University of Leeds | Grades: AAA(A*AB)-AAB EAP: B-C | Grades: AAA EAP: C | Grades: AAB-ABB EAP: B-C | Grades: AAB-ABB EAP: B | Grades: AAA EAP: C | Grades: AAA EAP: C | N/A | Grades: AAA-ABB EAP: B | Grades: AAA-AB EAP: B | Grades: AAB-ABB EAP: A-B | Grades: AAA EAP: A | Grades: AAA-ABB EAP: B-C | Grades: AAA-ABB EAP: B | Grades: AAA-ABB EAP: B-C |
| Leeds Beckett University | Grades: BBB EAP: C | Grades: ABB-BBB EAP: B-C | Grades: BBB EAP: C | Grades: BBB EAP: C | Grades: ABB-BBB EAP: C | Grades: BBB-BCC EAP: C | Grades: CCC EAP: C | Grades: BBB-BBC EAP: C | Grades: BBB-BBC EAP: C | Grades: BBB EAP: B-C | Grades: BBB EAP: C | Grades: BBB EAP: C | Grades: BBB-BBC EAP: C | Grades: BBB EAP: A-C |
| Liverpool John Moores University | Grades: BBC-CCC EAP: C | Grades: BBB-BBC EAP: C | Grades: BBC EAP: C | Grades: BBC-BCC EAP: C | Grades: BBC EAP: C | Grades: BBB-BCC EAP: C | Grades: BBC EAP: C | Grades: BBC-BCC EAP: C | Grades: BBB-BBC EAP: C | Grades: BBC-BCC EAP: B-C | Grades: BCC EAP: C | Grades: BBB-BCC EAP: B-C | Grades: BBC-BCC EAP: C | Grades: BCC EAP: B |
| The University of Manchester | Grades: A*AA-AB EAP: B-C | Grades: AAA EAP: B | N/A | Grades: AAB EAP: B | Grades: A*A*A-AB EAP: B | Grades: A*AA-AB EAP: B-C | N/A | Grades: AAA-ABB EAP: A-B | Grades: AAA-AB EAP: A | N/A | Grades: AAB EAP: B | Grades: A*A*A-AB EAP: A-C | Grades: ABB EAP: A-B | N/A |
| Manchester Metropolitan University | Grades: BBC-CCC EAP: C | Grades: AAA EAP: B | Grades: AAB-BBC EAP: C | Grades: BBB-CCC EAP: C | Grades: BBC-CCC EAP: C | Grades: BBC-CCC EAP: C | Grades: CCC EAP: C | Grades: CCC EAP: C | Grades: BBC-CDD EAP: B-C | Grades: CCC EAP: C | Grades: BBC EAP: C | Grades: BBC-CCC EAP: C | Grades: CCC EAP: C | Grades: BBC EAP: C |
| Queen Mary, University of London | Grades: AAA-AB EAP: A-C | N/A | N/A | Grades: AAA EAP: A | Grades: AAB-ABB EAP: C | Grades: AAA-ABB EAP: C | N/A | Grades: AAB-ABB EAP: A-C | N/A | Grades: ABB EAP: A | Grades: AAB EAP: B | Grades: AAB-ABB EAP: A-B | Grades: ABB EAP: A | N/A |
| University of Salford | Grades: BBB-BCC EAP: C | Grades: BBC-BCC EAP: C | Grades: BCC-CCC EAP: C | Grades: BCC EAP: C | Grades: BBB-CCC EAP: C | Grades: AAB-BBC EAP: C | Grades: BCC EAP: C | Grades: BBC-CCC EAP: C | Grades: BBC-BCC EAP: C-D | Grades: ABB-BBC EAP: B | Grades: BBC EAP: C | Grades: BBB-CCC EAP: C | Grades: BCC EAP: C | Grades: BCC EAP: C |
| The University of Sheffield | Grades: AAA-AB EAP: B-C | Grades: AAA-ABB EAP: A-B | N/A | Grades: AAB EAP: B | Grades: AAA-AB EAP: B | Grades: AAA-AB EAP: B-C | N/A | Grades: ABB EAP: A-B | Grades: AAA-AB EAP: A | Grades: ABB EAP: A | Grades: AAB EAP: B | Grades: AAA-ABB EAP: A | Grades: AAB-BBB EAP: A-B | N/A |
| Sheffield Hallam University | Grades: BBB-BBC EAP: C | Grades: BBC EAP: C | Grades: BBC EAP: B-D | Grades: BBC EAP: C | Grades: BBB-CCC EAP: C | Grades: ABB-CCC EAP: C | Grades: BBC-BCC EAP: C | Grades: BBC-BCC EAP: B-C | Grades: BBB-BBC EAP: B | Grades: BBC EAP: B-C | Grades: BBB EAP: B | Grades: BBC-CCC EAP: C | Grades: BCC-CCC EAP: B | Grades: BBB EAP: C |

Placement year options available at all universities.

Universities reserve the rights to change the entry requirements. For the latest information contact the Centre.

For some programmes at NCUK universities, you may need specific grades from specified subjects in the Foundation which may impact on your eligibility.

Applicants to many Architecture, Art and Design courses may require a portfolio in addition to the Foundation certificate.

* For progression to these subject areas, you may need to demonstrate evidence of previous experience in these specialisms.

Progress to Year 2 of an undergraduate degree at an NCUK university

Start date

3 term: Jan or Sep
4 term: Jun or Sep

English language entry requirements*

3 term: UKVI IELTS 5.5 (with a minimum of 5.5 in reading and writing) or equivalent

4 term: UKVI IELTS 5.0 (with a minimum of 5.0 in all subskills) or equivalent

Age requirement

17 years and above**

* If you do not meet the minimum English language requirements you should apply for our Academic English course. See page 19 for more information.

** All students commencing courses on a published September start date must be 18 years old by 31 December of that calendar year. For all other start dates, students must be 18 years old on the published start date of the programme.

Prepare to progress to a degree:



70+

degrees at 10 NCUK universities

International Year One

International Business, Accounting and Finance

- > Choose your specialist pathway post-arrival after a common first semester.
- > Up to 10 universities to choose from.
- > Complete your degree in the same time as a home student.

What will I study?

You will need to earn 120 credits from the following module options to successfully complete your pathway programme:

Semester 1:

| | |
|---|---------------------------------------|
| Business Economics (15 credits) | Financial Accounting 1 (15 credits) |
| Business Skills (15 credits) | Organisational Behaviour (15 credits) |
| English for Academic Purposes and Study Skills (EAP)* | |

At the end of your first semester you will continue to one of the following two pathways based on your chosen progression option:

Semester 2

| | |
|---|---|
| English for Academic Purposes and Study Skills (EAP)* | Business and Management pathway (BM) |
| | Quantitative Methods for Business (15 credits) |
| | Management Accounting (15 credits) |
| | Management Themes and Case Studies (15 credits) |
| Accounting and Finance pathway (AF)** | Marketing (15 credits) |
| Business Finance (15 credits) | |
| Quantitative Methods for Business (15 credits) | |
| Financial Accounting 2 (15 credits) | |
| Management Accounting (15 credits) | |

Progress to **1 of 10** universities**. Find out more: www.intostudy.com/into-manchester/YOBAF

* Compulsory but non credit bearing.

** If you select modules for the Accounting and Finance pathway you will not be able to progress to The University of Manchester.

You can progress to one of more than 70 degrees from this programme. This table highlights some of the most popular degrees available:

| University | Degree | Pathway | UCAS code | EAP grade | Credits | Average score % |
|------------------------------------|--|---------|-----------|-----------|---------|-----------------|
| University of Bradford | Accounting and Finance BSc (Hons) | AF/BM | N420 | C | 120 | 60+ |
| University of Bradford | Business and Management BSc (Hons) | AF/BM | N100 | C | 120 | 60+ |
| University of Huddersfield | Accountancy BA (Hons) | AF/BM | N410 | C | 105+ | 50+ |
| University of Huddersfield | International Business BA (Hons) | AF/BM | N124 | C | 105+ | 50+ |
| University of Huddersfield | Supply Chain Management BA (Hons) | AF/BM | J960 | C | 105+ | 50+ |
| University of Leeds | Accounting and Finance BSc (Hons) | AF | N420 | B | 120 | 70+ |
| University of Leeds | International Business and Finance BSc (Hons) | AF/BM | NN13 | B | 120 | 70+ |
| University of Leeds | Business Management with Marketing BA (Hons) | BM | N2N5 | B | 120 | 60+ |
| Leeds Beckett University | Accounting and Finance BA (Hons) | AF | N420 | C | 105+ | 40+ |
| Leeds Beckett University | Events Management BA (Hons) | BM | N820 | C | 105+ | 50+ |
| Liverpool John Moores University | Accounting and Finance BSc (Hons) | AF/BM | N420 | C | 120 | 50+ |
| Liverpool John Moores University | Business and Public Relations BA (Hons) | BM | NP12 | C | 105+ | 55+ |
| Manchester Metropolitan University | Accounting and Finance BA (Hons) | AF | NN34 | C | 105+ | 50+ |
| Manchester Metropolitan University | Business Management BA (Hons) | AF/BM | N201 | C | 105+ | 50+ |
| Manchester Metropolitan University | Events Management BA (Hons) | BM | N821 | C | 105+ | 50+ |
| The University of Manchester | Management (Accounting and Finance) BSc (Hons) | BM | NN24 | B | 120 | 70+ |
| The University of Manchester | Management (Marketing) BSc (Hons) | BM | N2N5 | B | 120 | 70+ |
| University of Salford | Accounting and Finance BSc (Hons) | AF/BM | NN34 | C | 120 | 50+ |
| University of Salford | Business and Economics BSc (Hons) | AF/BM | N1L1 | C | 120 | 50+ |
| University of Salford | Human Resource Management BSc (Hons) | AF/BM | N1N6 | C | 120 | 50+ |
| The University of Sheffield | Accounting and Finance Management BSc (Hons) | AF | N420 | B | 120 | 65+ |
| The University of Sheffield | Business Management BA (Hons) | BM | N200 | B | 120 | 65+ |
| Sheffield Hallam University | Accounting and Finance BA (Hons) | AF | N4N3 | C | 105+ | 50+ |
| Sheffield Hallam University | Business Management BA (Hons) | AF | N201 | C | 105+ | 50+ |
| Sheffield Hallam University | Business and Marketing BA (Hons) | BM | NN15 | C | 105+ | 50+ |

Degree option with a year in industry also available.

Find comprehensive information on all academic pathway programmes, degree options and progression requirements at: www.intostudy.com/into-manchester/courses

Pre-Master's

- > Develop your academic and postgraduate research skills in your chosen field.
- > An ideal preparation course for students who want to study a Master's degree at a UK university.

What will I study?

English for Academic Purposes

Management Studies*

Research Methods

* Compulsory but non credit bearing.

Progress to **1 of 16** universities. Find out more: www.intostudy.com/into-manchester/PM

Special features

- > A guaranteed place at one of the NCUK universities, dependent on academic history, work experience and successful completion of the programme.
- > Learn to prepare literature reviews, research proposals and correct referencing techniques.
- > Experience authentic assessments that mirror those at university.
- > Receive assistance with all stages of the application process, through individual tutorials with an INTO Manchester tutor.
- > Become involved in the organisation of, and present your research at, a conference.
- > Benefit from small group tuition, taught by award-winning NCUK teachers in a supportive environment.

Being academically pre-qualified for progression to your choice of university is essential. This programme cannot be used as an academic top-up.

"INTO Manchester gave me confidence and a good head start. I'd already familiarised myself with academic life at the University and life in the UK, so I didn't have any problems with culture shock."

Frankie, Indonesia
Graduated with MSc International Business Management from The University of Manchester



"Students who are planning on studying a postgraduate degree in the UK would definitely benefit from taking the Pre-Master's. From the very first day of my postgraduate course I started to use knowledge I gained during my Pre-Master's at INTO Manchester."

Alyona, Russia
Graduated with MA (Hons) Marketing from The University of Manchester

Progress to a postgraduate degree at an NCUK university

Start date

2 term: Jan
3 term: Sep

English language entry requirements*

2 term: UKVI IELTS 5.5 (with a minimum of 5.5 in reading and writing) or equivalent

3 term: UKVI IELTS 5.0 (with a minimum of 5.0 in reading and writing) or equivalent

Please note: for visa purposes, students requiring a Tier 4 visa must have UKVI IELTS 5.5 (with a minimum of 5.5 in all subskills) or equivalent.

Age requirement

21 years and above

* If you do not meet the minimum English language requirements you should apply for our Academic English course. See page 19 for more information.

Prepare to progress to a degree:



1,000+

degrees at 16 NCUK universities

Pre-Master's progression

The progression grades from the Pre-Master's are outlined in the table below. These progression grades are the requirements from your programme at INTO Manchester and are in addition to any other academic or employment requirements outlined for your desired programme at your chosen university.

| University | Accounting and Finance | Business and Management | Marketing | Sports and Leisure Management, and Logistics |
|------------------------------------|--|---|--|---|
| | <ul style="list-style-type: none"> Accounting Actuarial Science Banking Economics Finance | <ul style="list-style-type: none"> Business Studies International Business Management MBA | <ul style="list-style-type: none"> Digital Marketing International Marketing Strategic Marketing Marketing | <ul style="list-style-type: none"> Entrepreneurship Human Resource Management Logistics Risk Management Sport Business Management Supply Chain Management |
| Aston University | EAP: Grade A or B overall; Research Module: Pass | EAP: Grade A or B overall; Research Module: Pass | EAP: Grade A or B overall; Research Module: Pass or Credit | EAP: Grade A or B overall; Research Module: Pass |
| University of Birmingham | EAP: Grade B overall; Research Module: Pass | EAP: Grade A or B overall; Research Module: Pass | EAP: Grade A overall; Research Module: Pass or Credit | EAP: Grade A overall; Research Module: Pass |
| University of Bradford | EAP: Grade B or C overall; Research Module: Pass | EAP: Grade B or C overall; Research Module: Pass | EAP: Grade B overall; Research Module: Pass | EAP: Grade B overall; Research Module: Pass |
| University of Bristol | EAP: Grade A or B overall; Research Module: Distinction | EAP: Grade A overall; Research Module: Distinction | EAP: Grade A overall; Research Module: Distinction | EAP: Grade B overall; Research Module: Distinction |
| University of Huddersfield | EAP: Grade C overall; Research Module: Pass with a minimum of 50% | EAP: Grade C overall; Research Module: Pass with a minimum of 50% MBA | EAP: Grade C overall; Research Module: Pass with a minimum of 50% Relevant degree required. | EAP: Grade C overall; Research Module: Pass with a minimum of 50% Relevant degree required. |
| University of Kent | EAP: Grade B overall; Research Module: Pass or Credit | EAP: Grade B overall; Research Module: Pass or Credit | EAP: Grade B overall; Research Module: Pass or Credit | EAP: Grade B overall; Research Module: Pass or Credit |
| Kingston University London | EAP: Grade B overall; Research Module: Pass | EAP: Grade B overall; Research Module: Pass | EAP: Grade B overall; Research Module: Credit | EAP: Grade B overall; Research Module: Pass |
| University of Leeds | EAP: Grade B overall; Research Module: Pass | EAP: Grade B overall; Research Module: Pass | EAP: Grade B overall; Research Module: Pass | EAP: Grade B overall; Research Module: Pass |
| Leeds Beckett University | EAP: Grade C overall; Research Module: Pass Relevant degree required | EAP: Grade C overall; Research Module: Pass Relevant degree required | EAP: Grade B or C overall; Research Module: Pass Relevant degree required | EAP: Grade A, B or C overall; Research Module: Pass Relevant degree required May be subject to interview |
| Liverpool John Moores University | Not offered | EAP: Grade B or C overall; Research Module: Pass | EAP: Grade C overall; Research Module: Pass Relevant degree required | EAP: Grade B or C overall; Research Module: Pass |
| The University of Manchester | EAP: Grade A overall; Research Module: Pass | EAP: Grade A or B overall; Research Module: Pass | EAP: Grade A overall; Research Module: Pass | EAP: Grade A or B overall; Research Module: Pass |
| Manchester Metropolitan University | EAP: Grade B overall; Research Module: Pass | EAP: Grade B overall; Research Module: Pass | EAP: Grade B overall; Research Module: Pass | EAP: Grade B overall; Research Module: Pass |
| Queen Mary, University of London | EAP: Grade A or B overall; Research Module: Pass or Credit | EAP: Grade A or B overall; Research Module: Pass or Credit | EAP: Grade A overall; Research Module: Credit | EAP: Grade A overall; Research Module: Credit |
| University of Salford Manchester | EAP: Grade B overall; Research Module: Pass | EAP: Grade B overall; Research Module: Pass | EAP: Grade B overall; Research Module: Pass | EAP: Grade B overall; Research Module: Pass |
| The University of Sheffield | EAP: Grade A or B overall; Research Module: Pass | EAP: Grade B overall; Research Module: Pass | EAP: Grade B or C overall; Research Module: Pass | EAP: Grade B overall; Research Module: Pass |
| Sheffield Hallam University | EAP: Grade B or C overall; Research Module: Pass | EAP: Grade B or C overall; Research Module: Pass Relevant experience may be required for some degrees. | EAP: Grade C overall; Research Module: Pass | EAP: Grade B or C overall; Research Module: Pass |

Find comprehensive information on all academic pathway programmes, degree options and progression requirements at: www.intostudy.com/into-manchester/courses

English courses

EN Academic English



For students who need to increase their IELTS level in order to progress to university. This intensive course offers rapid progress of up to one IELTS band per term.

Course features

- You will learn through face-to-face teaching and online learning to communicate effectively in English and improve your reading, writing, speaking and listening skills.
- A diverse social programme and effective academic content will help you to develop the fluency and confidence you need to progress to further study.
- Access INTO's interactive online learning platform, MyINTO, outside of class to practise your English language skills, complete tasks and engage with classmates.
- Developed in partnership with Cambridge English, the world leader in language assessment, INTO English Language Assessment (IELA) provides a standardised online assessment of all four core language skills throughout your studies. The IELA test is available to you as an additional form of assessment and allows you to choose from a wide range of Higher Education institutions

EN General English

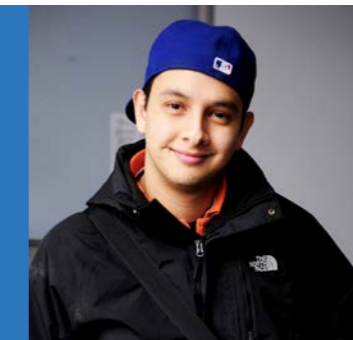
For students who want to increase their confidence in using everyday English for general life, work, socialising and travel in the UK.

Course features

- Build your confidence in core English language skills in everyday situations, from speaking, reading, listening and writing to vocabulary and grammar.
- Year-round courses have flexible start dates and course lengths, from 2-48 weeks.
- Take part in a range of activities and socialise with students from all over the world to build on your English language ability and make new friends.

"You can not find a better place to study English than in the UK. I learned about different cultures, behaviours and religions. I think it has been the biggest experience of my entire life!"

Nixander, Colombia
Studied General English at INTO Manchester



Accredited by the
BRITISH COUNCIL
for the teaching
of English in the UK

All our English language courses at INTO Manchester have received accreditation from the British Council.

Improve your English language skills to prepare for further academic study

Start date

16 weeks: Aug
1-4 terms: Sep, Jan, Apr, Jun

English language entry requirements

From IELTS 3.0 or equivalent

Age requirement

16 years and above

Class size and hours

Maximum of 16 students

30 learning hours per week, with 25 hours of face-to-face contact

Note: 1 term = 11 weeks (10 of which are teaching weeks)

Improve your English language skills for work, socialising and travel

Start date

Jun, Jul, Aug, Sep, Oct, Nov and Dec

English language entry requirements

All English levels, from elementary to upper intermediate

Age requirement

16 years and above

Class size and hours

Maximum of 16 students

20 hours per week on average

Dates and prices

The cost of your programme may vary depending on factors including the pathway chosen and programme length. The following guide to costs is based on pricing for the current academic year and provides an indication of the cost of attendance for some of our pathways. For specific cost information, please refer online: www.intostudy.com/into-manchester/courses

Estimated cost of attendance based on prices for current academic year 2019–2020

| Study length | Tuition | Accommodation | Books and fees | Airport pick up | Insurance | Total |
|--|---------|----------------|----------------|-----------------|-----------|------------------------|
| Academic programmes | | | | | | |
| International Foundation (3 term) | £15,650 | £5,780-£9,600 | £420-£820 | £45 | £357 | £22,207-£26,427 |
| International Foundation (2 term) | £15,650 | £4,460-£6,370 | £420 | £45 | £196 | £20,771-£22,681 |
| International Foundation (4 term) | £20,080 | £8,615-£12,385 | £510-£910 | £45 | £466 | £29,716-£33,886 |
| International Year One (3 term) | £15,650 | £6,460-£9,120 | £420 | £45 | £357 | £22,887-£25,547 |
| Pre-Master's (3 term) | £15,650 | £6,630-£9,360 | £420 | £45 | £357 | £23,057-£25,787 |
| English language courses | | | | | | |
| 1 term* | £4,430 | £1,870-£2,640 | £90 | £45 | £122 | £6,512-£7,282 |
| 16 weeks | £7,090 | £3,035-£4,360 | £130 | £45 | £145 | £10,445-£11,770 |

Start months and term dates

| Academic programmes | | Academic English | |
|--|---------------------------------|---------------------------|---------------------------------|
| June (4 term) | Mon 22 Jun 2020-Fri 18 Jun 2021 | August (16 weeks) | Mon 10 Aug 2020-Fri 11 Dec 2020 |
| September (3 term) | Mon 14 Sep 2020-Fri 18 Jun 2021 | September (1 term) | Mon 28 Sep 2020-Fri 11 Dec 2020 |
| September (3 term Pre-Master's) | Mon 28 Sep 2020-Fri 25 Jun 2021 | January (1 term) | Mon 11 Jan 2021-Fri 26 Mar 2021 |
| September (4 term) | Mon 28 Sep 2020-Fri 27 Aug 2021 | April (1 term) | Tue 06 Apr 2021-Fri 18 Jun 2021 |
| January (3 term) | Mon 11 Jan 2021-Fri 27 Aug 2021 | June (1 term) | Mon 28 Jun 2021-Fri 10 Sep 2021 |
| March (2 term) | Mon 01 Mar 2021-Fri 27 Aug 2021 | | |

Prices shown are for the current academic year of 01 September 2019 - 31 August 2020 and for indicative purposes only. We will confirm all tuition dates and prices for the academic year 2020/2021 on or before 20 January 2020, with the tuition prices being subject to a maximum increase of up to 5% on the prices for the current academic year. For full details of term dates, please visit the relevant course page at www.intostudy.com/into-manchester/courses

* The price will depend on your start date and length of study. Prices shown are only for one term. Vacation weeks in between terms are extra and will be charged at the weekly accommodation price.



Apply via your local INTO educational counsellor

If you would like us to put you in contact with one of our counsellors, please contact us.



Apply online

Complete our online application form: apply.intostudy.com



Need some help with your tuition fees?

Check to see if you're eligible for a scholarship: www.intostudy.com/into-manchester/scholarships

Discover more online

For students:

www.intostudy.com/into-manchester

For education counsellors:

partnerportal.intoglobal.com/into-manchester

Connect with us



Contact us

Enquiries and applications:

ukes@intoglobal.com

or +44 1273 876040

Visit the Centre:

manchester.marketing@intoglobal.com

or +44 161 631 1200

Centre address details:

INTO Manchester
Bridgewater House
58/60 Whitworth Street
Manchester
M1 6LT
United Kingdom



Through innovative partnerships with leading universities, we expand opportunities for higher education, ensuring success and transforming the lives of our students and staff.

INTO GIVING

Working across the globe, INTO Giving supports projects that increase access to education and improve the quality of teaching and learning. For more information visit www.into-giving.com

Education counsellor's stamp

