



HOFSTRA
UNIVERSITY®

NEW YORK



INNOVATORS.
STORYTELLERS.
CREATORS.



PREPARE TO
ACHIEVE.

WHY CHOOSE HOFSTRA UNIVERSITY?

TOP 6%

of colleges and universities nationwide for mid-career salary for alumni with only a bachelor's degree

PayScale College Salary Report 2018-2019

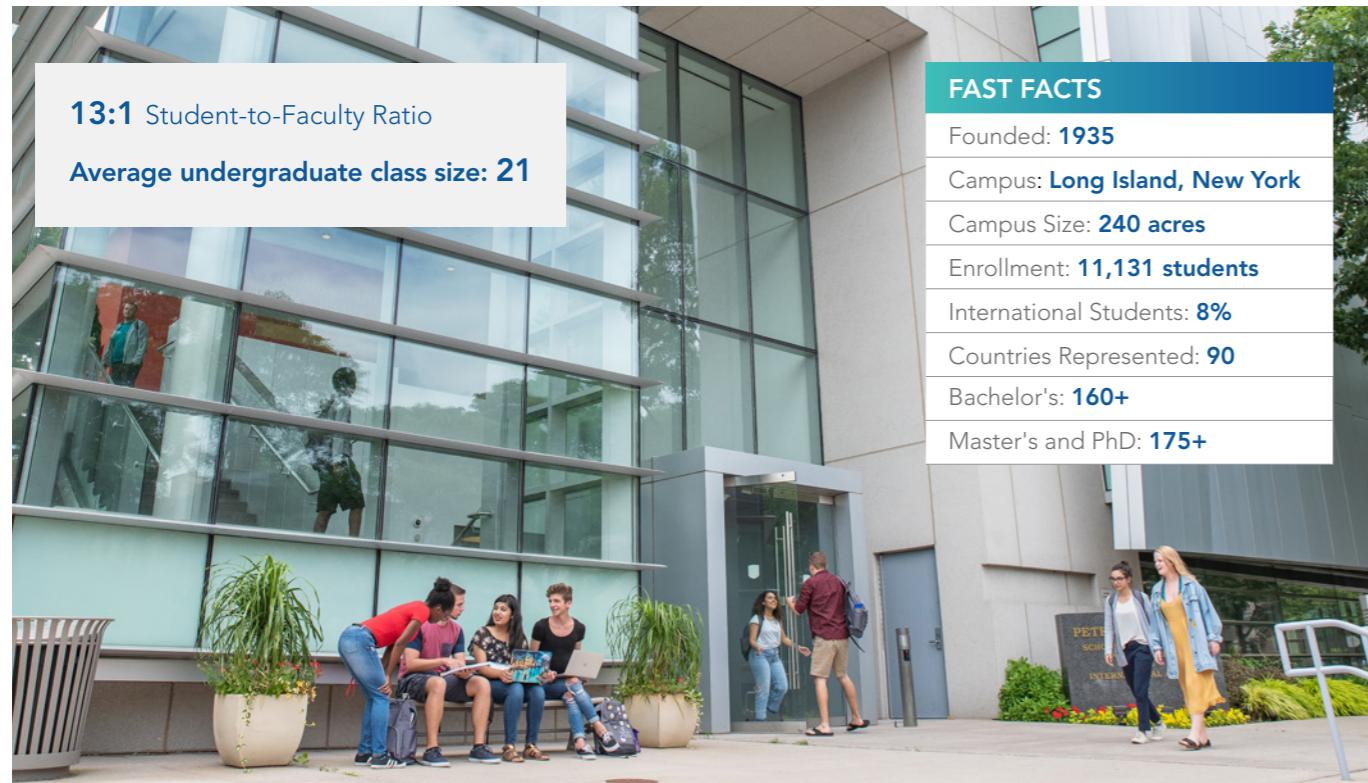
**TOP 25%
US COLLEGES**

The Wall Street Journal & Times Higher Education, U.S. College Ranking 2019

73%

of Hofstra students who graduated in 2017-2018 had an internship while they were Hofstra students, and many had two or more

Class of 2017-2018



13:1 Student-to-Faculty Ratio

Average undergraduate class size: 21

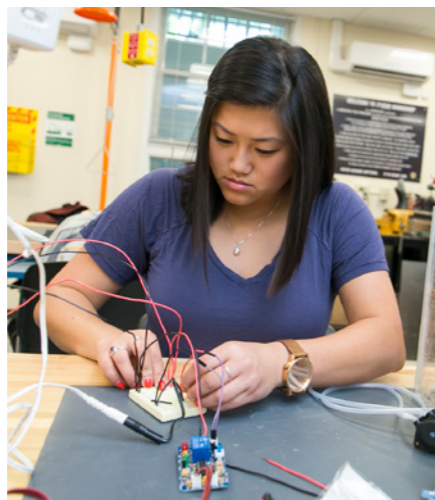
#77 Best Value Schools

U.S. News & World Report 2019

#140 National Universities

U.S. News & World Report 2019

1 of only 3 schools in the New York metropolitan area with colleges of law, medicine and engineering



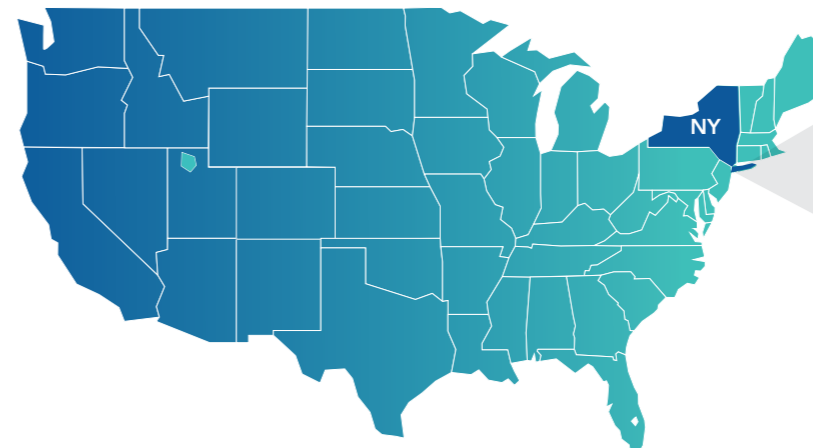
Hofstra University is the only university to host three consecutive **US PRESIDENTIAL DEBATES** in 2008, 2012 and 2016.



Campus Life. City Lights. Have it all at Hofstra.

- New York City is ranked the #1 Most Influential City in the World *Business Insider 2019*
- The state of New York has the most Fortune 500 company headquarters in the United States.
- As the home of the United Nations and Wall Street, New York City is a powerful financial and geopolitical center.

Long Island, New York



20 minutes by car to John F. Kennedy International Airport

40 km to New York City

45 minutes by train and one hour by car to New York City

PROGRAM RANKINGS

BUSINESS

Top 5%

of the nation's best schools for graduate business majors

PayScale College Salary Report 2017-2018



Top 19%

of the nation's for mid-career salary for alumni with MBA degrees compared to all those with advanced degrees

PayScale College Salary Report 2016-2017

COMMUNICATIONS LIBERAL ARTS

#7

Best College Radio Station in the Nation

The Princeton Review 2019

Top 15

Best Music Business Schools

Billboard Magazine 2017

ENGINEERING

#35

Undergraduate Engineering Program (non-doctorate)

The Princeton Review 2019



Engineering Co-Op Program

32 ACCREDITATIONS



ABOUT HOFSTRA UNIVERSITY



Programs Driven by Industry Needs

- Learn how to write compelling content from Emmy Award-winning communications faculty.
- Dive deep into the world of cybersecurity with the DeMatteis School of Engineering and Applied Science's Facebook connections.
- Take steps toward starting your own business by consulting entrepreneurs-in-residence or springboarding collaborations at the IdeaHUB.

Hofstra's faculty constantly collaborates with top executives in each industry to build strong programs and ensure that Hofstra students meet the employment market needs. Our programs are designed with industry-level standards in mind. The curriculum is updated often based on what's happening in your field, so you're learning the most up-to-date and important skills for your career goals. On top of that, our faculty have either held your dream job or have lucrative contacts to leaders in the field.

Preparing You for Your Career

- Interview alongside the reporters who cover on-campus events of national interest, like the past three US presidential debates.
- Get a feel for what your first job in engineering would be like with the Co-Op program where you will complete a paid six-month internship.
- Learn trading in one of the largest academic trading rooms in the nation, identical to those used by leading financial institutions.

Career preparation begins with practicing in the classroom what you will perfect in the boardroom. These experiences on your résumé are what will impress companies when you apply for jobs. By studying at Hofstra, you have the chance to go after Hofstra-exclusive learning opportunities and have an edge on the job market competition when you graduate.

The INTO Hofstra Advantage

Hofstra University partners with INTO to create a support system for international students. We offer Academic English, International Year One, Undergraduate Transfer Program, Graduate Pathway and Direct Entry programs where you will work alongside your American peers and earn credit towards your degree while improving your English skills. After successful completion of your program you will be able to progress to a Hofstra degree program.



Virtual Campus Tour

Take a campus tour from home with Hofstra's Virtual Tour at www.youvisit.com/hofstra



Live the Campus Life



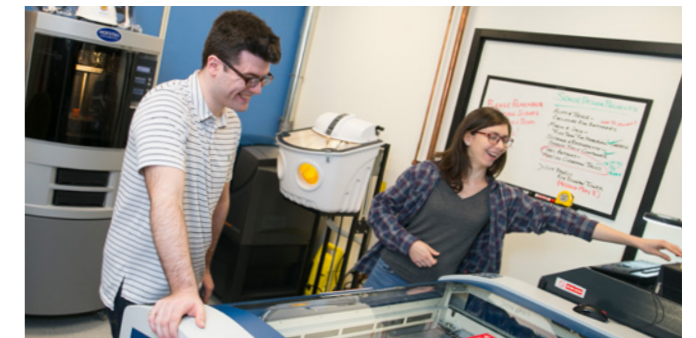
By living just outside New York City, you get to enjoy a relaxed neighborhood as your daily retreat, with the option to get your Big Apple fix in one hour or less. Instead of being in the New York City hustle and bustle, you can focus on your studies in a calm, welcoming and cozy atmosphere.

With more than 500 on-campus events per year and 21 Division I teams, there is plenty of entertainment on campus. You will be able to easily walk to classes and live in affordable on-campus housing while breathing in the fresh ocean breeze.

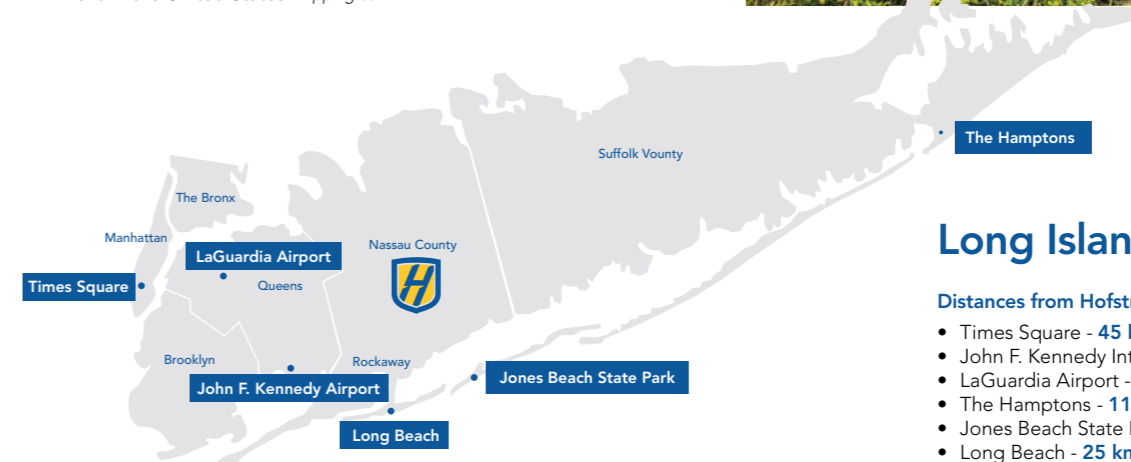
Hofstra's location puts you in a diverse, coastal community near spectacular beaches, historic landmarks and popular New York City boroughs like Brooklyn and Queens.

Things to Do on Long Island

- Enjoy the beaches from Long Beach to the glamorous Hamptons.
- The 300-year-old Sunken Forest on nearby Fire Island features an untouched forest and wide open beach.
- In the hometown of abstract artist Jackson Pollock, it's only fitting to visit museums like the Nassau County Museum of Art and the Parrish Art Museum in Water Mill.
- Eat freshly caught, local seafood on Shelter Island.
- Go shopping at the Roosevelt Field Mall, one of the top 10 largest malls in the United States. *Tripping.com*



F. Scott Fitzgerald's claim-to-fame novel, *The Great Gatsby*, took place on Long Island's Gold Coast.



Long Island, New York

Distances from Hofstra University

- Times Square - 45 km
- John F. Kennedy International Airport - 20 km
- LaGuardia Airport - 33 km
- The Hamptons - 117 km
- Jones Beach State Park - 16 km
- Long Beach - 25 km

EXPERIENCE THE CITY LIGHTS



Places to Go in New York City

- Take a walk through picturesque Central Park. It's a famous backdrop for many American movies with scenic trails, bike paths, a John Lennon memorial, concert venues and much more.
- See a show on Broadway, the global destination for musicals and plays. Countless comedy and live music hotspots can be found throughout the city.
- Visit the historic Statue of Liberty and learn about the history of Ellis Island.
- Go to the top of the Empire State Building and the rooftop deck of 30 Rock for epic views of the city.
- Channel your artistic side at MOMA (Museum of Modern Art) and The Met (The Metropolitan Museum of Art) in Manhattan.
- Watch a baseball game with the New York Yankees, a basketball game with the New York Knicks or a football game with the New York Jets or New York Giants.

Start Your Career in New York City

The state of New York has the most Fortune 500 company headquarters in the US (more than 60). You could start your career at one of the following headquarters:

- American Express
- Estée Lauder
- E*Trade Financial
- Foot Locker
- Goldman Sachs Group
- Nasdaq
- Pfizer
- Ralph Lauren
- S&P Global
- Tiffany & Co.
- Viacom
- Warner Bros. Records

Housing and Dining

On-Campus Housing

Program	REQUIRED (FIRST 2 SEMESTERS)	NOT REQUIRED
Academic English* (AE)	■	
AE + International Year One (IYO)	■	
IYO	■	
AE + Undergraduate Transfer Program (UTP)		■
UTP		■
Undergraduate Direct		■
AE + Graduate Pathway (GPW)		■
GPW		■
Graduate Direct		■

* Students in Academic English 21 and older are not required to live on campus.



Dining at Hofstra

- Students living on campus will receive a limited meal plan.
- Take your pick of 18 retail restaurant locations and a 24-hour dining service.

Transportation on Campus

- Campus Train Shuttle: The shuttle stops by the residence halls and the route covers over 10+ stops and stops by the train stations to get to New York City.
- Shopping Shuttle: Shuttle available for students to go shopping on the weekends and includes a stop at Roosevelt Field Mall.
- Night Shuttle: From 10 PM to 5 AM, the shuttle runs through the surrounding neighborhoods and takes you to your residence hall.
- Free parking on campus for students.



Choose from the following room options:



Double Suite-Style Shared Bathroom



Super Single Suite-Style Shared Bathroom



The Frank G. Zarb School of Business



"My experience at Hofstra and in this country couldn't be better! The MBA program gave me so much knowledge about business, especially in the finance and accounting fields which I never worked in before. I got my co-op internship at Zwanger-Pesiri Radiology as a marketer. Hofstra helped me with my CPT application. After three months of interning, the company offered me a full-time position. Now they are helping me with my OPT application. I appreciate all the talented individuals I have met through the co-op program. It has exposed me to different cultures which has molded my way of thinking."

Max, China
MBA in Marketing

Where You Will Learn

- A new home: Opened in January 2019, the Frank G. Zarb School of Business boasts a 52,000-square-foot building.
- Behavioral Science and Market Research Lab: Study and research consumers' physical and physiological behavior with the latest technology to analyze their engagement process to a brand or a product.
- The Martin B. Greenberg Trading Room: One of the largest academic trading rooms in the nation, identical to those used by leading financial institutions and equipped with 34 Bloomberg and Professional terminals.

Get to Work With America's Business Leaders

HOFSTRA-DIGITAL REMEDY VENTURE CHALLENGE

- Annual entrepreneurship competition gives students the opportunity to create and pitch their own business plan.
- Winners of the competition receive a cash prize to help implement their business plan, a space in a Manhattan office for the summer and a digital marketing package to launch their business.

IBM GLOBAL UNIVERSITY

- New alliance between the Zarb School of Business and IBM Global University enhances Hofstra's technology curriculum and provides training and certification in high-demand digital skills to students such as AI, Blockchain and decision sciences.
- First partnership of this kind with IBM in the state of New York.

MBA CO-OP PROGRAM

- Six-month paid co-op experience at leading corporations in New York City and on Long Island.

STUDENT MANAGED INVESTMENT FUND

- Students manage a portfolio of \$100,000 as a team while learning about the analysis and investment process of a fund.

Bring Your Ideas to Life

CENTER FOR ENTREPRENEURSHIP

- The IdeaHUB: a business incubator where students can collaborate with startup companies.
- Entrepreneurs-in-Residence: Experienced entrepreneurs give aspiring students advice on the next steps to take toward starting their own business.
- Unispan Records: Student-run record label that gives students the chance to record, produce, promote and distribute music.

Real Tech Experience for the Real World

FACEBOOK'S CYBERSECURITY UNIVERSITY PROGRAM

- One of only nine US universities to have this program in collaboration with Facebook.
- Cybersecurity training coding academy: In conjunction with Facebook and CodePath.org, Hofstra offers a free, 12-week cybersecurity training coding academy.
- Scholarships for cybersecurity conferences: Facebook offers various scholarships to top students and invites them to attend conferences such as the annual Facebook Developer Conference in Silicon Valley.

ASPiRe (ADVANCED SUMMER PROGRAM IN RESEARCH)

- 10-week, intensive program for students interested in pursuing a research project related to their major.
- Work full-time during the summer on your research project with faculty or peer mentors and present your research at a symposium at the end of the summer. You might even present at professional conferences or publish your research in scholarly journals.

The Fred DeMatteis School of Engineering and Applied Science



CENTER FOR INNOVATION

- Companies consult the Center for Innovation at Hofstra when they need help solving a technical or practical engineering problem.
- As a student, you will join a group of experienced professionals, faculty and engineers to find an innovative solution for a company while gaining real-world experience.

ENTREPRENEURSHIP IN COMPUTING

- The Leadership and Innovation concentration is available to computer science students.
- You will learn to identify innovative and entrepreneurial opportunities in computing and how to move from an idea to a product to a small company.
- As part of this course, you will have a 10- to 13-week internship with a local startup company. You will be mentored by entrepreneurs in all aspects of working, managing and organizing a startup.

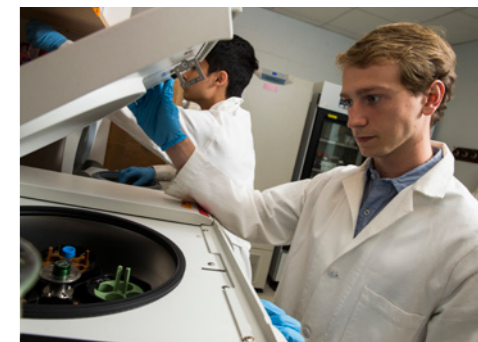
CO-OP PROGRAM

- Undergraduate engineering and computer science students can begin the program after the first semester of their junior year. The program is also available for graduate-level computer science students.
- Complete a six-to-eight-month paid internship at industry-leading corporations in New York City, Long Island or nationwide.
- Over 150 corporate partners including, Black Knight, Canon, Estée Lauder, Gerber Technology, Google, GroupM, IBM, JFK Airport, Lockheed Martin, Medtronic, Nomura, Stantec, UPS, Veeco and Zebra.
- More than 80% of the students who have graduated from the program have received job offers from their co-op companies.



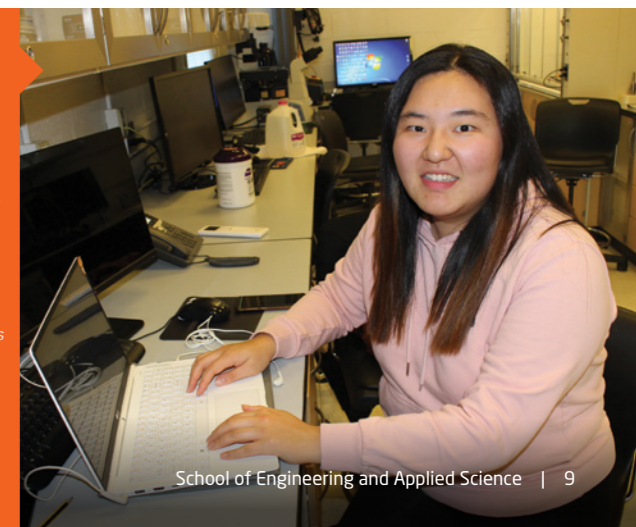
100%
of computer science graduates accepted a job offer within six months

Based on 2016-2017 Hofstra University undergraduate degree recipients who responded to a survey or other reliable sources within a year of graduating (61% knowledge rate).



"As part of ASPiRe, I conducted experiments in the ultrasound lab under the supervision of Dr. Ghorayeb. In the research projects at Hofstra, I was encouraged to think independently and to critically analyze research questions and ideas. With the support of the faculty at Hofstra's Fred DeMatteis School of Engineering and Applied Science, two of my research projects were selected to be presented at the 2018 BMES annual meeting in Atlanta, GA."

Chaeun, South Korea
BS in Biomedical Engineering



The Lawrence Herbert School of Communication



Mark Lukasiewicz, Dean of The Lawrence Herbert School of Communication

Emmy award-winning NBC News executive helped pioneer the network's multi-platform storytelling and produced live coverage of major news events, including four presidential elections and 10 presidential debates.



Lawrence Herbert, Hofstra alum, became CEO of Pantone Inc., and invented the world-renowned Pantone Matching System, a global standard for the communication of colors.

PMS 661

Television and Film

- Our television faculty helped found major networks like Telemundo and have been presidents of prime time news organizations like Fox News.
- You will learn the fundamentals of television from experts who have contributed to several award-winning shows, including *Good Morning America*, The Olympics, NFL, Super Bowl, NHL, Baseball World Series and *Jimmy Kimmel Live*.
- Our film faculty have been directors, producers, stage managers, writers and more. Not only that, but our professors have won Emmy, Franklin J. Schaffner Achievement and George Polk awards.

News and Media

If becoming a serious journalist is your ambition, you've come to the right place. Our journalism faculty have held the following influential roles in media:

- Contributors for the most prestigious news organizations like *Al Jazeera*, *Bloomberg*, *CNN*, *Columbia Journalism Review*, *Fortune*, *Harvard Business Review*, *The Huffington Post*, *The New York Times*, *Newsday*, *The Atlantic* and *The Washington Post*.
- Head of communications for the United Nations Secretary-General's High Level Panel on the Post-2015 Development Agenda.

- Spokesperson appointed by President Obama for international affairs in the US Treasury Department.
- Spokesperson for New York City economic development initiatives during the administration of Mayor Michael R. Bloomberg.
- On-air commentator providing analysis of media, social justice issues, and politics for NPR, CNN, BET, Fox, TV-One, MTV and MSNBC.

Get Writing, Broadcasting and Filming Experience Before You Graduate

- All students are required to work with the career center to complete three credits of an internship (or 180 hours) to graduate.
- Third- and fourth-year students in the Department of Radio, Television, Film can participate in an internship and will earn up to six credits.

"Professionally, working on Hofstra Votes Live (election coverage) was definitely an unforgettable experience. I was the main camera operator in the WRHU mixing studio. I learned so much from that night; teamwork is so important in television production. Being a Herbert School student is definitely the best decision in my college life."

Hao, China
Bachelor's in Film Studies and Production

School of Natural Sciences and Mathematics



A Career in Medicine

The field of medicine is diverse and offers many more options beyond medical school.

- Medical Physics: Use analytical, computer-aided and bioengineering techniques to help health professionals with diagnosis and treatment of patients.
- Public Health: Conduct scientific research or promote and protect the health of the community through education.
- Health Informatics: Develop information systems to manage patient healthcare information or help doctors create treatment plans.

Northwell Partnership

- Hofstra University has partnered with Northwell Health, New York state's largest health care provider and private employer, to establish and operate the Donald and Barbara Zucker School of Medicine at Hofstra/Northwell.
- This dynamic collaboration has transformed medical education through the creation of an innovative curriculum that integrates academic course content with hands-on clinical experiences. It is a new approach to learning that combines biomedical, biopsychosocial and clinical medicine needed to tackle tomorrow's healthcare issues.

Research Around the World

Our students can join faculty at any point during the academic year or summer in the following fields, listed as examples:

- Study turtle behavior in the Jamaica Bay.
- Retrace the steps of Charles Darwin in the Galápagos Islands.
- Study volcanoes in Greece.
- Observe the universe through world-class telescopes in Chile or Hawaii.

Forensic Science

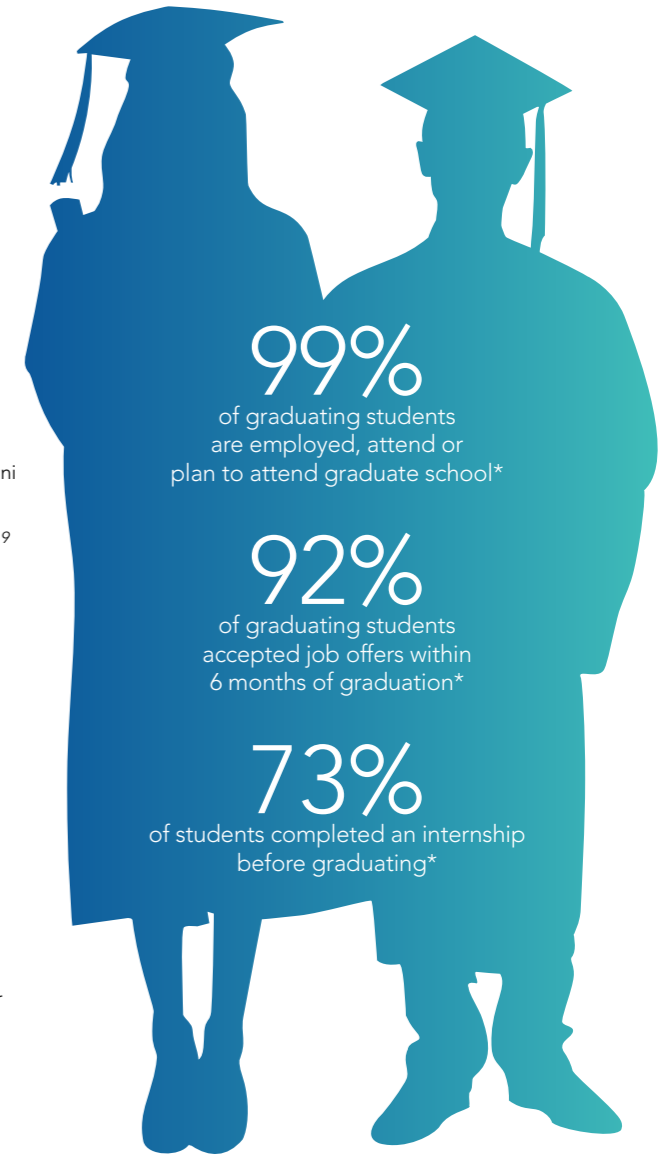
Our forensic science faculty divide their time between teaching students at Hofstra and working with the Nassau and Suffolk County Police Departments, NYPD and the Manhattan Medical Examiner's Office.

Invest in Your Future

- 54% accepted job offers before graduation *Hofstra Data 2015-2016*
- Top 6% of colleges and universities nationwide for mid-career salary for alumni with only a bachelor's degree *PayScale College Salary Report 2018-2019*
- Top 13% nationwide for return on investment *PayScale College ROI Report 2018-2019*
- Top 80 private colleges and universities nationwide for mid-career salary of graduates with a bachelor's *PayScale College Salary Report 2018-2019*

Some of Hofstra's Famous Alumni:

- Frank G. Zarb: former Chairman and CEO of the National Association of Securities Dealers (NASD) and former head of the Nasdaq
- Ralph S. Larsen: former CEO of Johnson & Johnson
- Avi Arad: former President-CEO of Marvel Studios and producer of *Spider-Man (2002)*, *Iron Man (2008)* and *Spider-Man: Into the Spider-Verse (2018)*
- Francis Ford Coppola: world-renowned director, producer and screenwriter. His most famous work: *The Godfather* film series
- Debra Ann Sandler: former President of M&M Mars Chocolate.
- Tracy Perlman: Senior Vice President of Communications and Marketing for the National Football League (NFL)



*Based on 2017-2018 Hofstra University undergraduate degree recipients who responded to a survey or other reliable sources within a year of graduating (61% knowledge rate).

Hofstra students have interned at the following companies:

- ABC
- CBS
- Doctors Without Borders
- Goldman Sachs
- JPMorgan Chase & Co.
- KPMG
- MTV/Viacom
- NASA
- NBC
- PwC
- Sony
- Toyota
- Vogue Magazine
- The Walt Disney Company

Employers of Hofstra Alumni

- ABC News
- ADP
- Amazon
- Boeing
- CBS
- Capital One
- Credit Suisse
- ESPN
- Estée Lauder
- EY
- Facebook
- HSBC Bank
- IBM Corp
- JPMorgan Chase & Co.
- *The Late Show with Stephen Colbert*
- Live Nation
- Marvel Entertainment
- Mercer
- Morgan Stanley
- NBC
- Nike
- PwC
- Skanska
- State Farm Insurance
- T-Mobile
- Time Inc.
- United Nations
- Viacom
- Warner Bros. Records
- Wells Fargo
- Yelp

ACADEMIC PROGRAMS

FIND YOUR DEGREE. With a wide range of subject areas and admissions options, you can find the perfect degree for your chosen career. You can choose to apply for direct entry to the university or for a Pathway program that provides extra academic, language and cultural support. From the day you apply to the day you graduate, we are here to help you succeed every step of the way. Flip to the back cover to learn how to apply.

B = Bachelor's **M = Master's**

GP = Graduate Pathway program that can lead to this degree is indicated in orange. This degree is also available through direct admission.

International Year One

Indicates the Undergraduate Pathway program that should be taken to progress to an undergraduate academic program. This program is also available through direct admission.

BU Business

CO Communication

CS Computer Science

EN Engineering

FP Fine and Performing Arts

GE General

**HE Health Science/
Exercise Science**

NS Natural Science

- This Hofstra University degree program is available through direct entry.
- ▶ Designated STEM degree by the US Department of Homeland Security.
- ¹ STEM is not available for all concentrations
- * Dual Bachelor's/Master's available

	B	M
College of Liberal Arts and Sciences		
African Studies	GE	
American Studies	GE	
Anthropology [BA options: Anthropology; Archaeology]	GE	
Applied Linguistics (TESOL)		•
Art History	GE	
Asian Studies	GE	
▶ Biochemistry	NS	GP
▶ Biology [BA/BS options: Biology; Cell and Molecular Biology; Ecology and Evolution; Marine Biology; Pre-Medical/Pre-Dental/Pre-Veterinary]	NS	GP
Business Education		•
▶ Chemistry	NS	
Chinese	GE	
Chinese Studies	GE	
Classics [BA options: Classical Civilizations; Classical Languages and Literatures]	GE	
Comparative Literature and Languages	GE	
Creative Writing		•
Criminology	GE	
Curriculum Studies		•
Dance	FP	
Drama	FP	
Early Childhood and Childhood Education	GE	•
▶ Economics* [BS options: Business Economics; Mathematical Business Economics] [BA options: Economics; Mathematical Economics] ¹	GE	
Educational Leadership and Policy Studies (K-12)		•
Elementary Education		•
English [BA options: English; Children's and Young Adult Literature; Creative Writing and Literature; Literatures in English; Publishing Studies and Literature]	GE	
▶ Environmental Resources	NS	
Family and Consumer Sciences		•
Fine Arts [BA/BS options: Ceramics; Design; Painting; Photography; Sculpture-Industrial Design]	FP	
Fine Arts Education		•
Foreign Language Education		•
▶ Forensic Linguistics		•
▶ Forensic Science		•
French	GE	
▶ Geography [BA option: Geography; Geographic Information Systems] [BS option: Geographic Information Systems] ¹	GE	
▶ Geology	GE	
German	GE	
Global Studies	GE	

	B	M
Health Education		•
Hebrew	GE	
Higher Education and Leadership Policy Studies		GP
History	GE	
Industrial/Organizational Psychology		•
Italian	GE	
Japanese	GE	
Japanese Studies	GE	
Jewish Studies	GE	
Labor Studies*	GE	
Languages Other Than English and TESOL		GP
Latin	GE	
Latin American and Caribbean Studies	GE	
Linguistics*	GE	
Literacy Studies [MA option: Literacy Studies (Birth-Grade 6) or (Grades 5-12)]		GP
▶ Mathematical Finance	BU	
▶ Mathematics* [BS options: Computer Science and Mathematics (Dual); Mathematics; Actuarial Science; Applied Mathematics; Chemistry; Engineering; Physics] [BA option: Mathematics]	GE	
Mathematics Education with STEM Integration		•
▶ Medical Physics		GP
Music [BA option: Music] [BS options: History/Literature; Jazz and Commercial Music; Music Business; Performance; Theory/Composition]	FP	
Music Education (MSEd Only)		•
Neuroscience	NS	
Philosophy	GE	
Physical Education	HE	•
▶ Physics [BS options: Applied Physics - Biochemistry; Applied Physics - Computer Science; Applied Physics - Engineering; Physics] [BA options: Physics]	NS	
Political Science	GE	
Pre-Health (Pre-Medical Science)		•
Pre-Medical Studies	NS	
Psychology*	GE	
Public Policy and Public Service	GE	
Religion	GE	
Rhetorical Studies [BA options: Political Communication; Speech Communication]	GE	
Russian	GE	
Secondary Education [BSEd options: Dance Education; Fine Arts Education; Music Education] [BA options: English Education; French; German; Italian; Russian; Spanish; Mathematics; Biology; Chemistry; Earth Science; Physics; Social Studies] [MSEd options: English; Mathematics; Biology; Chemistry; Earth Science; Physics; Social Studies]	GE	•

	B	M
Secondary Special Education [MSEd options: Inclusive Secondary; Secondary Special Education Generalist; Students with Disabilities Generalist with Extensions in Secondary Education]		•
Sociology	GE	
Spanish	GE	
Special Education and Early Childhood (birth-grade 2) Education (Inclusive)		•
Special Education and Elementary (grades 1-6) Education (Inclusive)		•
Special Education and Secondary (grades 7-12) Education (Inclusive)		•
Special Education and TESOL		•
STEM Studies	GE	
▶ Sustainability		GP
▶ Sustainability Studies	GE	
Theater Arts	FP	
▶ Urban Ecology ¹	NS	GP
Women's Studies	GE	
School of Health Professions & Human Services		
Athletic Training	HE	
Community Health [BS options: Community Health; Nutrition Science]	HE	
Counseling		•
Creative Arts Therapy Counseling		GP
Exercise Science	HE	
Health Administration		GP
Health Informatics		GP
Health Science	HE	
Marriage and Family Therapy		•
Mental Health Counseling		•
Public Health		GP
Rehabilitation Counseling		•
Rehabilitation Counseling in Mental Health		•
Speech-Language-Hearing Sciences		•
Sports Science [MS options: Strength and Conditioning; Exercise Physiology]		GP
Frank G. Zarb School of Business		
Accounting*	BU	GP
Business Administration/MBA		GP
▶ Business Analytics ¹	BU	GP
Entrepreneurship*	BU	
Finance*	BU	GP
Health Services Management		GP
Human Resources Management		GP
▶ Information Systems ^{*1}	BU	GP

	B	M
International Business*	BU	GP
Legal Studies in Business*	BU	
Management*	BU	GP
Marketing*	BU	GP
Marketing Research*		GP
Professional Accountancy		•
Quality Management		GP
▶ Quantitative Finance		GP
Sports and Entertainment Management		•
Strategic Business Management ²		•
Strategic Healthcare Management ²		•
Supply Chain Management*	BU	
The Lawrence Herbert School of Communication		
Audio/Radio Production and Studies	CO	
Film Studies and Production	GE	
Journalism ^{*3} [BA options: Journalism; Sports Media]	CO	•
Mass Media Studies [BA options: Media and Culture; Media, Law, and Policy; Urban and Suburban Communication]	CO	
Public Relations ³		•
Television Production and Studies	CO	
Video/Television	FP	
Video/Television and Business	FP	
Video/Television and Film	FP	
Fred DeMatteis School of Engineering & Applied Science		
▶ Bioengineering [BS options: Bioengineering; Bioelectricity; Biomechanics; Pre-medicine]		•
▶ Computer Engineering [BS options: Computer Engineering; Gaming and Graphics; Networking and Cybersecurity; Web and Mobile Engineering]	EN	
▶ Computer Science ^{*1} [BA/BS options: Computer Science; Gaming and Graphics; Networking and Cybersecurity; Web and Mobile Engineering; Computer Science and Cybersecurity] [BS option: Computer Science and Mathematics (Dual)]	CS	GP
▶ Engineering ¹ [BS options: Applied Physics - Engineering; Civil Engineering; Electrical Engineering; Electrical Engineering - Computer Engineering; Industrial Engineering; Mechanical Engineering] [BA options: Biomedical Engineering Science; Production and Manufacturing Engineering Science] [BE options: Biomedical Engineering Science; Civil Engineering Science]	EN	
▶ Engineering Management		GP
Maurice A. Deane School of Law		
American Legal Studies		•
Family Law		•
Health Law and Policy		•

² Programs require an EQUIS or AACSB undergraduate degree.
³ Graduate programs require a TOEFL 90 or IELTS 7.0.



UNDERGRADUATE ADMISSIONS

We offer several routes to admission. With more than 160 bachelor's degrees, flexible study plans and start dates throughout the year, we will help you find the option that's right for you.

There's no need to stress about where you start; just focus on where you're going. You can complete your degree at any stage. We don't design our programs for one type of student; our programs are built for every kind of student. Where you will begin depends on your grades and English level. Where you end up is where you want to be: graduating with a bachelor's from Hofstra.

→ **DIRECT ENTRY:** If you meet the academic and English language requirements for your degree program, you can apply directly to Hofstra University.

To apply, you will need the following required documents: declarations, high school transcripts, university transcripts (for transfer applicants), proof of degree, personal statement, a letter of recommendation, accounting of time, passport, English test score and proof of enrollment (transfer student only). An application fee may apply. For more information, visit www.hofstra.edu/admission/adm_international_main.html

→ **INTERNATIONAL YEAR ONE:** International Year One allows you to begin earning credits toward your degree even if you do not meet the academic and English requirements for direct entry. You will receive additional academic, English language and cultural support to help you successfully complete your first year and graduate in the same amount of time as direct entry students. For more information, visit www.intostudy.com/hofstra/programs

PROGRAM	Entry Requirements	
	DIRECT*1	INTERNATIONAL YEAR ONE*
Program requirements*	<ul style="list-style-type: none"> High school diploma Additional materials may also be required 	High school diploma
Minimum GPA Equivalent	3.0	2.5
TOEFL iBT	80	79
IELTS	6.5	6.5
IELA	NA	176
Duolingo	NA	120
Academic English	NA	Level 6

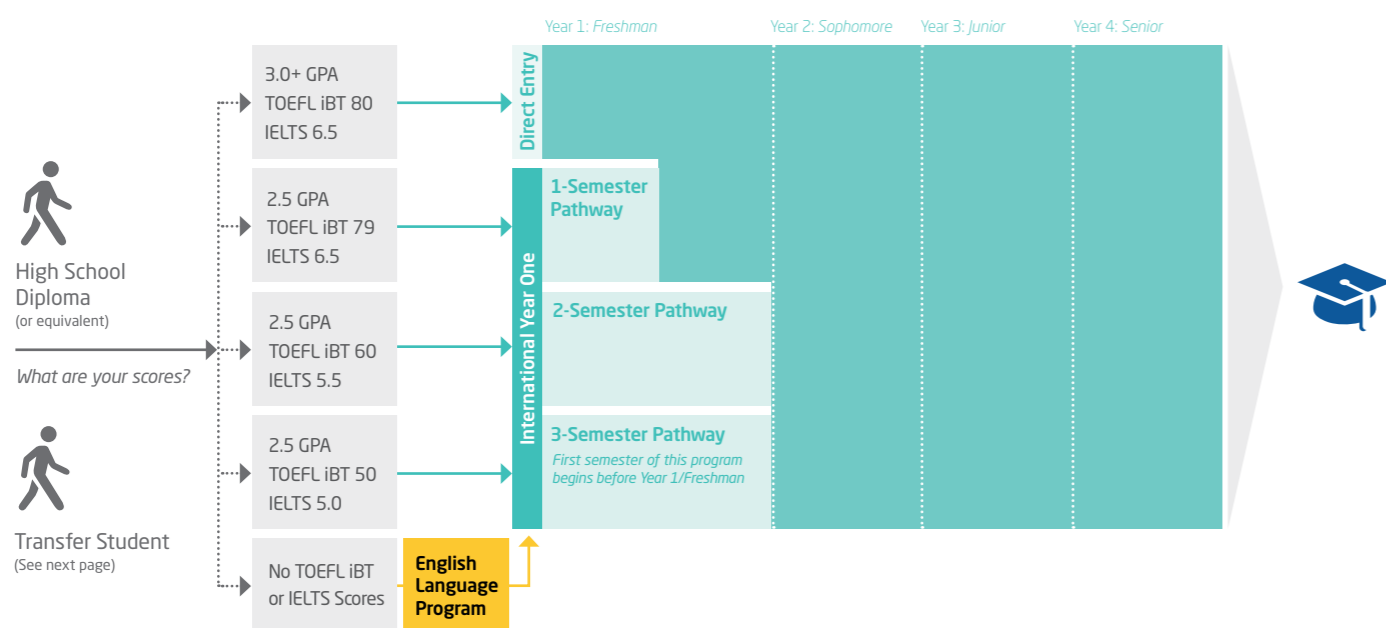
Notes: Entry requirements are subject to change and vary by program.
 *All Direct Entry and International Year One students are required to take an English Language Placement test and a Math Placement test during Orientation.
 †SAT/ACT not required for admission. Minimum score required for scholarship consideration SAT 1150/ACT 23.

Institutional Code TOEFL: 2295 SAT: 2295 ACT: 2760

Dates	Direct	International Year One
Start Dates	Fall 2020: Aug 2020 Spring 2021: Jan 2021	Fall 2020: Aug 31, 2020 Spring 2021: Jan 19, 2021

→ **ENGLISH LANGUAGE PROGRAM:** If you do not meet the direct or International Year One entry language requirements, you can enter our Academic English program to improve your academic and language skills. Once you have achieved the required language level, you can progress to International Year One. Learn more on page 21.

Undergraduate Degree Program



International Year One Programs

*Estimated credits remaining after Pathway/Total credit hours needed to complete degree.

Semester(s)	Start Dates		Credits	Entry Requirements: High School Diploma					Progression Requirements	
	Fall	Spring		GPA	TOEFL iBT	IELTS	IELA	Duolingo	GPA	Other
Business										
3-Semester	•	•	94/128	2.5	50	5.0	154	75	2.5	<ul style="list-style-type: none"> No grades below C No I or W/UW grades
2-Semester	•	•	97/128		60	5.5	162	90		
1-Semester	•	•	113/128		79	6.5	176	120		
Communication										
3-Semester	•	•	90-91/124	2.5	50	5.0	154	75	2.5	<ul style="list-style-type: none"> No grades below C No I or W/UW grades
2-Semester	•	•	93-94/124		60	5.5	162	90		
1-Semester	•	•	109/124		79	6.5	176	120		
Computer Science										
3-Semester	•	•	88/124	2.5	50	5.0	154	75	2.5	<ul style="list-style-type: none"> No grades below C No I or W/UW grades
2-Semester	•	•	91/124		60	5.5	162	90		
1-Semester	•	•	108/124		79	6.5	176	120		
Engineering										
3-Semester	•	•	93-98/128-133	2.5	50	5.0	154	75	2.5	<ul style="list-style-type: none"> No grades below C No I or W/UW grades
2-Semester	•	•	96-101/128-133		60	5.5	162	90		
1-Semester	•	•	112-117/128-133		79	6.5	176	120		
Fine and Performing Arts										
3-Semester	•	•	91/124	2.5	50	5.0	154	75	2.5	<ul style="list-style-type: none"> No grades below C No I or W/UW grades
2-Semester	•	•	94/124		60	5.5	162	90		
1-Semester	•	•	109/124		79	6.5	176	120		
General										
3-Semester	•	•	91/124	2.5	50	5.0	154	75	2.5	<ul style="list-style-type: none"> No grades below C No I or W/UW grades
2-Semester	•	•	94/124		60	5.5	162	90		
1-Semester	•	•	109/124		79	6.5	176	120		
Health Science/Exercise Science										
3-Semester	•	•	92/127	2.5	50	5.0	154	75	2.5	<ul style="list-style-type: none"> No grades below C No I or W/UW grades
2-Semester	•	•	95/127		60	5.5	162	90		
1-Semester	•	•	111/127		79	6.5	176	120		
Natural Science										
3-Semester	•	•	88/124	2.5	50	5.0	154	75	2.5	<ul style="list-style-type: none"> No grades below C No I or W/UW grades
2-Semester	•	•	91/124		60	5.5	162	90		
1-Semester	•	•	107/124		79	6.5	176	120		

Entry and progression requirements are subject to change and may vary by program.

[SAMPLE GRID INTERNATIONAL YEAR ONE] Business			
2-Semester Pathway Fall 2020: August 31, 2020 Spring 2021: January 19, 2021	Degree Program Components 128 credit hour program 31 credit hours apply from Pathway 97 credit hours remaining toward degree	Program Information	
Entry Requirements	Semester 1 Course Title	Credit Hours	Progression Requirements
<ul style="list-style-type: none"> High school diploma 2.5 minimum GPA on 4.0 scale Language requirement: <ul style="list-style-type: none"> TOEFL iBT 60 or IELTS 5.5 or IELA 162 or Duolingo 90 	ESL 105 Advanced Reading, Writing, and Grammar I ESL 106 Advanced Listening, Viewing, and Speaking I BBA 100 Business and Society: Foundations for Professional Development MATH 040 Linear Mathematics and Matrices FA 014 Drawing and Perception I	3 3 3 3 3	<ul style="list-style-type: none"> Minimum 2.5 GPA No grades below C No I or W/UW grades These courses are generally delivered through the INTO Hofstra Center and are for Pathway students only.
	Semester 2 Course Title	Credit Hours	Notes
	ESL 111 Advanced Reading, Writing and Grammar II ESL 112 Advanced Listening, Viewing and Speaking II IT 014 Introduction to Computer Concepts and Software Tools in Business ENTR 115 Introduction to Global Entrepreneurship ACCT 101 Financial Accounting	3 3 4 3 3	Math placement will be dictated by a placement test that is administered after arrival during orientation.
	Total	15	
1-Semester Pathway Fall 2020: August 31, 2020 Spring 2021: January 19, 2021	Degree Program Components 128 credit hour program 15 credit hours apply from Pathway 113 credit hours remaining toward degree		
Entry Requirements	Semester 1 Course Title	Credit Hours	
<ul style="list-style-type: none"> High school diploma 2.5 minimum GPA on 4.0 scale Language requirement: <ul style="list-style-type: none"> TOEFL iBT 79 or IELTS 6.5 or IELA 176 or Duolingo 120 	ESL 111 Advanced Reading, Writing, and Grammar II ESL 112 Advanced Listening, Viewing, and Speaking II BBA 100 Business and Society: Foundations for Professional Development MATH 040 Linear Mathematics and Matrices FA 014 Drawing and Perception I	3 3 3 3 3	
	Total	15	

www.hofstra.edu/academics/colleges/zarb/zarb_undergrad.html



US UNDERGRADUATE EDUCATION SYSTEM

To graduate with your 4-year undergraduate degree, you will need to take the following classes:

Core classes: General education courses can include English composition, social sciences, humanities, history, mathematics and natural/physical science. These are typically taken at the beginning of your degree.

Major classes: These classes will be about the specific field of study you chose. They are typically taken toward the last part of your degree.



UNDERGRADUATE TRANSFER PROGRAM >>

Have you earned credits from another college or university and want to transfer to a US university? You can transfer directly into Hofstra University or choose our Undergraduate Transfer Program (UTP) which is specifically designed to support international students through the process of transferring.

Entry Requirements		
PROGRAM	DIRECT TRANSFER	UNDERGRADUATE TRANSFER PROGRAM
Program length	N/A	1-Semester 2-Semester
Start Dates	Fall: Aug 2020 Spring: Jan 2021	Fall: Aug 31, 2020 Spring: Jan 19, 2021
GPA	2.5	2.5
TOEFL iBT	80	60-79
IELTS	6.5	5.5-6.5
IELA	162-176	162-176
Duolingo	N/A	1-Semester: 120 2-Semester: 90
Minimum Transfer Credits	24	24
Maximum Transfer Credits	Community colleges or 2-year institutions: 64 (Business: 65 and Engineering: 69) Accredited Universities: No limit	64 (Business: 65/Engineering: 69)

Entry requirements are subject to change and vary by program.

Why Choose UTP?

Choosing UTP provides a customized, cost-effective path to your bachelor's degree. Before your program starts, Hofstra will provide you with an estimate of credits that transfer to the university. Once you arrive on campus, our friendly staff will be available to help you transition into life at Hofstra University. You will also have access to helpful resources including academic, English language and cultural support. If you do not meet the English language entry requirements for the UTP, you can enter our Academic English program before progressing to either the UTP or direct transfer to Hofstra.

Undergraduate Transfer Program Benefits

- Transfer of credits from your college or university-level classes to your degree
- Receive customized curriculum of university credit-bearing courses
- Quick turnaround time for offer (5-7 business days)
- Unofficial Pre-arrival Credit Evaluation (1.5 additional business days after receiving offer letter)
- Progression to any undergraduate program upon successful completion of your UTP
- Academic advising throughout the program with progression and student success advisors

Undergraduate Transfer Program Start Dates

PROGRAM	Fall: Aug 31, 2020	Spring: Jan 19, 2021
Business	⊙ ⊙	⊙ ⊙
Communication	⊙ ⊙	⊙ ⊙
Computer Science	⊙ ⊙	⊙ ⊙
Engineering	⊙ ⊙	⊙ ⊙
Fine and Performing Arts	⊙ ⊙	⊙ ⊙
General	⊙ ⊙	⊙ ⊙
Science	⊙ ⊙	⊙ ⊙
Health Science/ Exercise Science	⊙ ⊙	⊙ ⊙
Natural Science	⊙ ⊙	⊙ ⊙

⊙ 1-Semester program

⊙ ⊙ 2-Semester program

GRADUATE ADMISSIONS >>

Hofstra is home to more than 175 graduate programs. Our programs are designed to help you combine your passion, strength and skills into a successful career. There are multiple ways you can begin your graduate-level studies.

How you start your program depends on your academic profile and your English level. How you finish your program is exactly how you pictured: graduating with a master's from Hofstra.

→ **Direct Entry:** If you meet the academic and English language requirements for your degree program, you can apply directly to Hofstra University.

To apply, you may need the following required documents: declarations, university transcripts, proof of degree, personal statement, letters of recommendation, accounting of time, passport and English test score. An application fee may apply.

Graduate degrees are competitive, and an extensive review of your application will be done. Please expect a longer turnaround for an admissions decision. For more information, visit

www.hofstra.edu/admission/adm_international_main.html

→ **Graduate Pathway:** Our Graduate Pathways allow you to begin earning credits toward your degree even if you do not meet the academic and English requirements for direct entry. The program will help build the academic foundation and essential English language skills you need to successfully progress to your master's degree. For more information, visit www.intostudy.com/hofstra/programs

→ **English Language Program:** If you do not meet the direct or Graduate Pathway program entry language requirements, you can enter our Academic English program to improve your academic and language skills. Once you have achieved the required language level, you can progress to a Graduate Pathway program. Learn more on page 21.

Entry Requirements			
PROGRAM	DIRECT	GRADUATE PATHWAY	
		1-SEMESTER	2-SEMESTER
Program requirements	<ul style="list-style-type: none"> • Bachelor's Degree • Additional material may also be required. GMAT/GRE requirement may apply depending on the program.	Bachelor's Degree	
Minimum GPA Equivalent	3.0	2.5-3.0	2.5-3.0
TOEFL iBT	80	79	65
IELTS	6.5	6.5	5.5
IELA	N/A	176	169
Duolingo	N/A	120	95
Academic English	N/A	Level 6	Level 5

Notes: Entry requirements are subject to change and may vary by program. In addition, the graduate programs may have other/higher requirements with which applicants must comply.

Institutional Code	TOEFL: 2295	GRE: 2295	GMAT: Select -Hofstra University- and the department you are applying to.
--------------------	-------------	-----------	---

Dates	DIRECT	GRADUATE PATHWAY
Start Dates	Fall 2020: Aug 2020 Spring 2021: Jan 2021	Fall 2020: Aug 31, 2020 Spring 2021: Jan 19, 2021

[SAMPLE GRADUATE PATHWAY PROGRAM] Graduate Pathway in MBA

2-Semester Pathway	Degree Program Components	Program Information
Fall: August 31, 2020 Spring: January 19, 2021	38-45 credit hour program 12 credit hours apply from Pathway 26-33 credit hours remaining toward degree	
Entry Requirements	Semester 1 Course Title Credit Hours	Progression Requirements
<ul style="list-style-type: none"> • Minimum GPA of 2.5 • Bachelor's degree or equivalent 	ESL 105 Advanced Reading, Writing and Grammar I 3 ESL 106 Advanced Listening, Viewing and Speaking I 3 IT 203 Information Systems for Managers 3 MGT 203 Operations and Supply Chain Management 3 Total 12	<ul style="list-style-type: none"> • Minimum 3.0 GPA • No grades below B- • No I or W/UW grades • GMAT overall score of 470
Language requirement:	Semester 2 Course Title Credit Hours	Notes
<ul style="list-style-type: none"> • TOEFL 65 • IELTS 5.5 • IELA 169 • Duolingo 95 	ESL 111 Advanced Reading, Writing and Grammar II 3 ESL 112 Advanced Listening, Viewing and Speaking II 3 ACCT 203 Accounting and Financial Reporting 3 BAN 203 Advanced Quantitative Analysis for Managers 3 Total 12	GMAT preparation resources will be available Students without a previous course in statistics will be advised to take a statistics workshop during their first semester.
1-Semester Pathway	Degree Program Components	Notes
Fall: August 31, 2020 Spring: January 19, 2021	38-45 credit hour program 12 credit hours apply from Pathway 26-33 credit hours remaining toward degree	This Pathway program leads to an MBA in Accounting, Business Analytics, Finance, Health Services Management, Information Systems, International Business, Management, Marketing or Quality Management.
Entry Requirements	Semester 1 Course Title Credit Hours	These courses are delivered through the INTO Center and are for Pathway students only.
<ul style="list-style-type: none"> • Minimum GPA of 2.5 • Bachelor's degree or equivalent 	ESL 111 Advanced Reading, Writing and Grammar II 3 ESL 112 Advanced Listening, Viewing and Speaking II 3 IT 203 Information Systems for Managers 3 ACCT 203 Accounting and Financial Reporting 3 MGT 203 Operations and Supply Chain Management 3 BAN 203 Advanced Quantitative Analysis for Managers 3 Total 18	For accelerated notes please visit partnerportal.intoglobal.com
Language requirement:		
<ul style="list-style-type: none"> • TOEFL 79 • IELTS 6.5 • IELA 176 • Duolingo 120 		

www.hofstra.edu/academics/colleges/zarb/isba/business-analytics-degree-master-ms.html

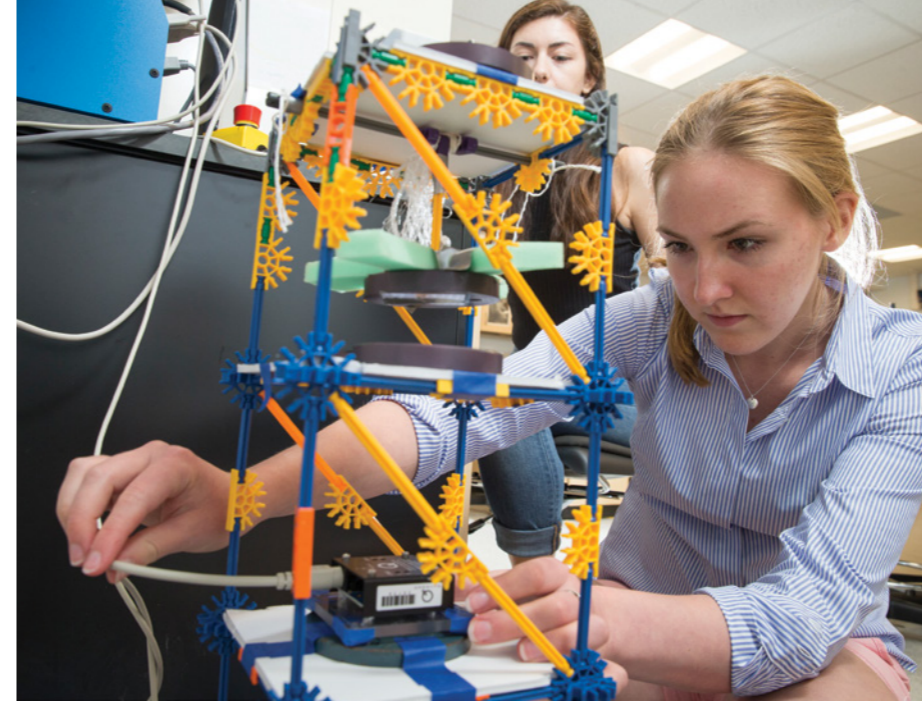


Graduate Pathway Programs

* Estimated credits remaining after Pathway/Total credit hours needed to complete degree.

Semester	Start Dates		Credits*	Entry Requirements				Progression Requirements			
	Fall	Spring		GPA	Bachelor's Degree	TOEFL iBT	IELTS	IELA	Duolingo	GPA	Other
Accounting											
2-Semester	•	•	21/30	2.5	Bachelor's degree or equivalent in business with at least two courses in accounting	65	5.5	169	95	3.0	<ul style="list-style-type: none"> No grades below B- No I or W/UW grades GMAT overall score of 510
1-Semester	•	•	21/30			79	6.5	176	120		
Biology											
2-Semester	•	•	21/33	2.5	Bachelor's degree or equivalent in biology. Students must have a grade of B or better in at least three upper-level biology courses that are each equal to at least 3 semester hours (US system equivalent)	65	5.5	169	95	3.0	<ul style="list-style-type: none"> No grades below B No I or W/UW grades
1-Semester	•	•	24/33			79	6.5	176	120		
Business Analytics											
2-Semester	•	•	21/30	2.5	Bachelor's degree or equivalent	65	5.5	169	95	3.0	<ul style="list-style-type: none"> No grades below B- No I or W/UW grades GMAT overall score of 510
1-Semester	•	•	21/30			79	6.5	176	120		
Computer Science											
2-Semester	•	•	18/30	2.5	Bachelor's degree or equivalent in computer science or related field	65	5.5	169	95	3.0	<ul style="list-style-type: none"> No grades below C+ No more than one I or W/UW grades GRE/GMAT score above 50th percentile
1-Semester	•	•	21/30			79	6.5	176	120		
Creative Arts Therapy Counseling											
2-Semester	•	•	48/60	2.5	Bachelor's degree or equivalent, with 18 credits of Studio Art, including drawing, painting and 3D art, and 12 credits of psychology courses	65	5.5	169	95	3.0	<ul style="list-style-type: none"> No grades below B No I or W/UW grades
1-Semester	•	•	51/60			79	6.5	176	120		
Engineering Management											
2-Semester	•	•	18/30	2.5	Bachelor's degree or equivalent in engineering	65	5.5	169	95	3.0	<ul style="list-style-type: none"> No grades below B No I or W/UW grades GRE/GMAT score above 50th percentile
1-Semester	•	•	21/30			79	6.5	176	120		
Finance											
2-Semester	•	•	21/30	2.5	Bachelor's degree or equivalent in business with at least one class in each of the following: calculus, microeconomics, macroeconomics and accounting and 2 classes in statistics	65	5.5	169	95	3.0	<ul style="list-style-type: none"> No grades below B- No I or W/UW grades GMAT overall score of 510
1-Semester	•	•	24/30			79	6.5	176	120		
Health Administration											
2-Semester	•	•	36/48	2.5	Bachelor's degree or equivalent in business, clinical professions (e.g. medicine, dentistry, pharmacology), health professions, health science or other related area	65	5.5	169	95	3.0	<ul style="list-style-type: none"> No grades below B No I or W/UW grades
1-Semester	•	•	39/48			79	6.5	176	120		
Health Informatics											
2-Semester	•	•	30/41	2.5	Bachelor's degree or equivalent in business, clinical professions (e.g. medicine, dentistry, pharmacology), health professions, health science, computer science, or other related area	65	5.5	169	95	3.0	<ul style="list-style-type: none"> No grades below B No I or W/UW grades
1-Semester	•	•	33/41			79	6.5	176	120		
Higher Education Leadership and Policy Studies											
2-Semester	•	•	24/36	2.5	Bachelor's degree or equivalent	65	5.5	169	95	3.0	<ul style="list-style-type: none"> No grades below B No I or W/UW grades
1-Semester	•	•	27/36			79	6.5	176	120		
Human Resources Management											
2-Semester	•	•	21/30	2.5	Bachelor's degree or equivalent	65	5.5	169	95	3.0	<ul style="list-style-type: none"> No grades below B- No I or W/UW grades GMAT overall score of 510
1-Semester	•	•	21/30			79	6.5	176	120		
Information Systems											
2-Semester	•	•	21/30	2.5	Bachelor's degree or equivalent	65	5.5	169	95	3.0	<ul style="list-style-type: none"> No grades below B- No I or W/UW grades GMAT overall score of 510
1-Semester	•	•	21/30			79	6.5	176	120		
Languages Other Than English and TESOL - Certification Standard											
2-Semester	•	•	28/40	3.0	Bachelor's degree or equivalent in target language (Arabic, Chinese/Mandarin, French, German, Italian, Russian, or Spanish) or a minimum of 36 hours in college level course work above level four, in the respective language. General liberal art coursework required.	65	5.5	169	95	3.0	<ul style="list-style-type: none"> No grades below B No I or W/UW grades
1-Semester	•	•	31/40			79	6.5	176	120		
Literacy Studies, Birth-Grade 6 or Grades 5-12											
2-Semester	•	•	20/32	2.5	Bachelor's degree or equivalent	65	5.5	169	95	3.0	<ul style="list-style-type: none"> No grades below B No I or W/UW grades
1-Semester	•	•	23/32			79	6.5	176	120		
Marketing											
2-Semester	•	•	21/30	2.5	Bachelor's degree or equivalent	65	5.5	169	95	3.0	<ul style="list-style-type: none"> No grades below B- No I or W/UW grades GMAT overall score of 510
1-Semester	•	•	21/30			79	6.5	176	120		
Marketing Research											
2-Semester	•	•	24/33	2.5	Bachelor's degree or equivalent	65	5.5	169	95	3.0	<ul style="list-style-type: none"> No grades below B- No I or W/UW grades GMAT overall score of 510
1-Semester	•	•	24/33			79	6.5	176	120		
MBA											
2-Semester	•	•	26-33/38-45	2.5	Bachelor's degree or equivalent	65	5.5	169	95	3.0	<ul style="list-style-type: none"> No grades below B- No I or W/UW grades GMAT overall score of 470
1-Semester	•	•	26-33/38-45			79	6.5	176	120		

Entry and progression requirements are subject to change and may vary by program.



Semester	Start Dates		Credits*	Entry Requirements				Progression Requirements			
	Fall	Spring		GPA	Bachelor's Degree	TOEFL iBT	IELTS	IELA	Duolingo	GPA	Other
Medical Physics											
2-Semester	•	•	27/39	2.5	Bachelor's degree or equivalent or a major or minor in Physics or Engineering with at least three upper level physics courses	65	5.5	169	95	3.0	<ul style="list-style-type: none"> No grades below B No I or W/UW grades
1-Semester	•	•	31/39			79	6.5	176	120		
Public Health											
2-Semester	•	•	29/42	2.5	Bachelor's degree or equivalent in biology, health, public health, health policy, public policy, political science, economics, health care management, sustainability studies, anthropology or other related field. One course in Statistics	65	5.5	169	95	3.0	<ul style="list-style-type: none"> No grades below B No I or W/UW grades
1-Semester	•	•	33/42			79	6.5	176	120		
Quantitative Finance											
2-Semester	•	•	24/33	2.5	Bachelor's degree or equivalent in business with at least one class in each of the following: calculus, microeconomics, macroeconomics and accounting 2 classes in statistics	65	5.5	169	95	3.0	<ul style="list-style-type: none"> No grades below B- No I or W/UW grades GMAT overall score of 550
1-Semester	•	•	24/33			79	6.5	176	120		
Sports Science [MS options: Exercise Physiology]											
2-Semester	•	•	22/34	2.5	Bachelor's degree or equivalent in exercise science, health and fitness, physical education or another related area	65	5.5	169	95	3.0	<ul style="list-style-type: none"> No grades below B No I or W/UW grades
1-Semester	•	•	25/34			79	6.5	176	120		
Sustainability											
2-Semester	•	•	18/30	2.5	Bachelor's degree or equivalent	65	5.5	169	95	3.0	<ul style="list-style-type: none"> No grades below B No I or W/UW grades
1-Semester	•	•	21/30			79	6.5	176	120		
Urban Ecology											
2-Semester	•	•	21/33	2.5	Bachelor's degree or equivalent in biology. Students must have a grade of B or better in at least three upper-level biology courses that are each equal to at least 3 semester hours (US system equivalent)	65	5.5	169	95	3.0	<ul style="list-style-type: none"> No grades below B No I or W/UW grades
1-Semester	•	•	24/33			79	6.5	176	120		

Entry and progression requirements are subject to change and may vary by program.



For current information, visit www.intostudy.com/hofstra/academic-english



ACADEMIC ENGLISH »

Key Program Facts

- Program length is 16 weeks
- Minimum enrollment of 1 semester
- Minimum age 16
- High school diploma required
- No English language requirement; students will be assessed and placed upon arrival
- 4 levels of instruction from true beginner to advanced
- 20 hours of instruction per week (28 hours in Summer)

Progression Requirements

International Year One 3-Semester Pathway

Completion of Academic English Level 3

International Year One 2-Semester Pathway

Completion of Academic English Level 4

Graduate Pathway 2-Semester Pathway

Completion of Academic English Level 4

Term Dates for Academic English

Fall 2020	Spring 2021	Summer 2021
Aug 31, 2020	Jan 19, 2021	May 17, 2021

The Academic English program at Hofstra prepares you for university study in the US. You will receive high-quality English language instruction and learn the academic skills to succeed at Hofstra.

What You will Learn

- Understand US values in an academic setting.
- Present spoken and written ideas accurately and effectively in English.
- Write research papers with proper use of citations and references.
- Read, understand and critically evaluate academic texts.
- Understand and use vocabulary common to academic disciplines.
- Take useful and accurate notes in academic lectures and presentations.

Estimated Academic English (AE) Level Based on Test Scores

All students take a placement test during orientation to determine their AE level. The table below shows your estimated level of AE based on your standardized test scores.

AE Levels	TOEFL iBT	IELTS	IELA
Level 1	1-29	N/A	N/A
Level 2	30-39	3.0-3.5	142-146
Level 3	40-49	4.0-4.5	147-153
Level 4	50-59	5.0	154-161 Undergraduate 154-168 Graduate

INTO Hofstra University Scholarships

Regional Scholarships Regional scholarships are available. Please contact your Regional Office for further details.

Progression Scholarships Progression scholarships are available. Please visit www.intostudy.com/hofstra/scholarships for more information.

Hofstra University Scholarship

Hofstra University offers a range of competitive scholarships.*

Eligibility: For consideration, students must have a minimum of 3.0 GPA on a 4.0 scale, and a minimum SAT score of 1150 (or 23 ACT score).

Amount: Undergraduate scholarships starting at \$8,000. Graduate scholarships are program dependent.

Notes: Scholarships are renewable annually, as long as specified criteria are met.

Please visit www.intostudy.com/hofstra/scholarships to see our Fall 2020 criteria.

*Scholarships are limited and not guaranteed. Scholarships are considered at the time of admission, no further application is needed.

Amounts subject to change. Limited awards at maximum value.

 Find out more about scholarships www.intostudy.com/hofstra/scholarships



There are two main semesters per academic year (Fall, Spring), each about 17 weeks long with a shorter Summer semester of 14 weeks

Undergraduate Programs

Program Length	International Year One or Undergraduate Transfer Program (UTP)			Undergraduate Direct	
	1 Semester	2 Semesters	3 Semesters <i>(Not available for UTP)</i>	1 Semester	2 Semesters
TUITION AND FEES	\$28,220	\$49,130	\$58,070	\$24,705	\$49,410
Housing*	\$12,450	\$24,900	\$37,350	\$8,290	\$16,450
Books and Supplies	\$500	\$1,000	\$1,500	\$500	\$1,000
Insurance	\$1,365	\$2,730	\$3,680	\$1,103	\$2,205
Other**	\$1,025	\$2,050	\$3,075	\$1,025	\$2,050
LIVING EXPENSES	\$15,340	\$30,680	\$45,605	\$10,918	\$21,705
TOTAL EXPENSES	\$43,560	\$79,810	\$103,675	\$35,623	\$71,115

Graduate Programs

Program Length	Graduate Pathway		Graduate Direct MBA		Graduate Direct Other Business Programs†		Graduate LLM Program		Graduate Direct All Other Programs‡	
	1 Semester	2 Semesters	1 Semester	2 Semesters	1 Semester	2 Semesters	1 Semester	2 Semesters	1 Semester	2 Semesters
TUITION AND FEES	\$21,010	\$36,460	\$18,350	\$36,700	\$13,690	\$27,370	\$31,705	\$63,410	\$13,390	\$26,775
Housing*	\$12,450	\$24,900	\$9,150	\$18,300	\$9,150	\$18,300	\$9,150	\$18,300	\$9,150	\$18,300
Books and Supplies	\$500	\$1,000	\$500	\$1,000	\$500	\$1,000	\$500	\$1,000	\$500	\$1,000
Insurance	\$1,365	\$2,730	\$1,103	\$2,205	\$1,103	\$2,205	\$1,103	\$2,205	\$1,103	\$2,205
Other**	\$1,025	\$2,050	\$1,025	\$2,050	\$1,025	\$2,050	\$1,025	\$2,050	\$1,025	\$2,050
LIVING EXPENSES	\$15,340	\$30,680	\$11,778	\$23,555	\$11,778	\$23,555	\$11,778	\$23,555	\$11,778	\$23,555
TOTAL EXPENSES	\$36,350	\$67,140	\$30,128	\$60,255	\$25,468	\$50,925	\$43,483	\$86,965	\$25,168	\$50,330

Academic English

Program Length	Academic English
1 Semester	
TUITION AND FEES	\$7,620
Housing*	\$12,450
Books and Supplies	\$500
Insurance	\$1,365
Other**	\$1,025
LIVING EXPENSES	\$15,340
TOTAL EXPENSES	\$22,960

All prices are estimated from 2019-20 and are subject to change. Please visit www.intostudy.com/hofstra/costs for exact pricing.

For details about Terms and Conditions, Country Scales and English Waivers, visit www.intostudy.com/hofstra/terms

*Housing is based on estimated costs and may vary depending on housing selected and personal preference.

**Other costs include personal and miscellaneous expenses e.g. laundry, toiletries, healthcare, clothing, transportation and entertainment and will vary depending on personal preference.

†Master's of Science

‡Graduate Direct Entry-Zarb School of Business (MBA) is based on 12 credits/semester while MS and all other programs are based on 9 credits/semester.

HOW TO APPLY

Choose from two easy ways to apply

1 Apply via your local INTO educational counselor

2 Apply online
Complete our online application form:

INTO Hofstra Programs:
apply.intostudy.com/hofstra

Direct Undergraduate:
www.hofstraadmission.org/international

Direct Graduate:
www.hofstra.edu/graduate/apply.html



HOFSTRA
UNIVERSITY®

INTO Hofstra University

INTO Hofstra University
246 Axinn Library
123 Hofstra University
Hempstead, NY 11549-1230
USA

T: +1 516-463-6500

E: HofstraAdmissions@intoglobal.com
www.intostudy.com/hofstra

Find us on:

 facebook.com/intohofstra

 instagram.com/intohofstra

 twitter.com/intohofstra

 myin.to/HofstraYouTube

WeChat



YouKu



Virtual Campus Tour

Take a campus tour from home with Hofstra's Virtual Tour at

www.youvisit.com/hofstra

INTO

Through innovative partnerships with leading universities, we expand opportunities for higher education, ensuring success and transforming the lives of our students and staff.

INTO GIVING

Working across the globe, INTO Giving supports projects that increase access to education and improve the quality of teaching and learning. For more information, visit www.into-giving.com

Discover more online

For counselors:
partnerportal.intoglobal.com/hofstra

For students:
www.intostudy.com/hofstra

Connect with us



Education counselor's stamp