



# CHOOSE YOUR LIU

International Student Brochure



# WELCOME TO LONG ISLAND UNIVERSITY

Our two campuses each offer **different experiences, both amazing** in their own ways. This prospectus will help you decide which is the best option for you and explain the degree programs available to you.

Our **university of distinction** gives you the opportunity to find your own student home town, a place for you to **excel, grow** and **prepare** for your future.

Whether you're a **city lover** or you're seeking the **quintessential college campus** experience, we've got the perfect degree for you.

LIU was **founded**  
**in 1926** in Brooklyn,  
expanding to the Long Island  
Post campus in 1954



I learned from my experience at LIU Post that people are not different, anywhere in the world. We are just the same. We are different colors and we like different spices and different foods, but all inside we are the just the same. We have the same conversations, the same fears, the same anxieties and the same hardships in daily life. If you get to know people you realize they are all the same; so that is one thing I am going to take back.

**Aisha, Pakistan**  
**MA English Literature**

## Contents

**4** The LIU Network

**6** Brooklyn & Post

**8** LIU Brooklyn

**10** Your Future in New York City

**12** Life at Brooklyn

**14** LIU Post

**16** Life at Post

**18** Your Career After Post

**20** Programs

**22** How to Apply



# THE LIU NETWORK

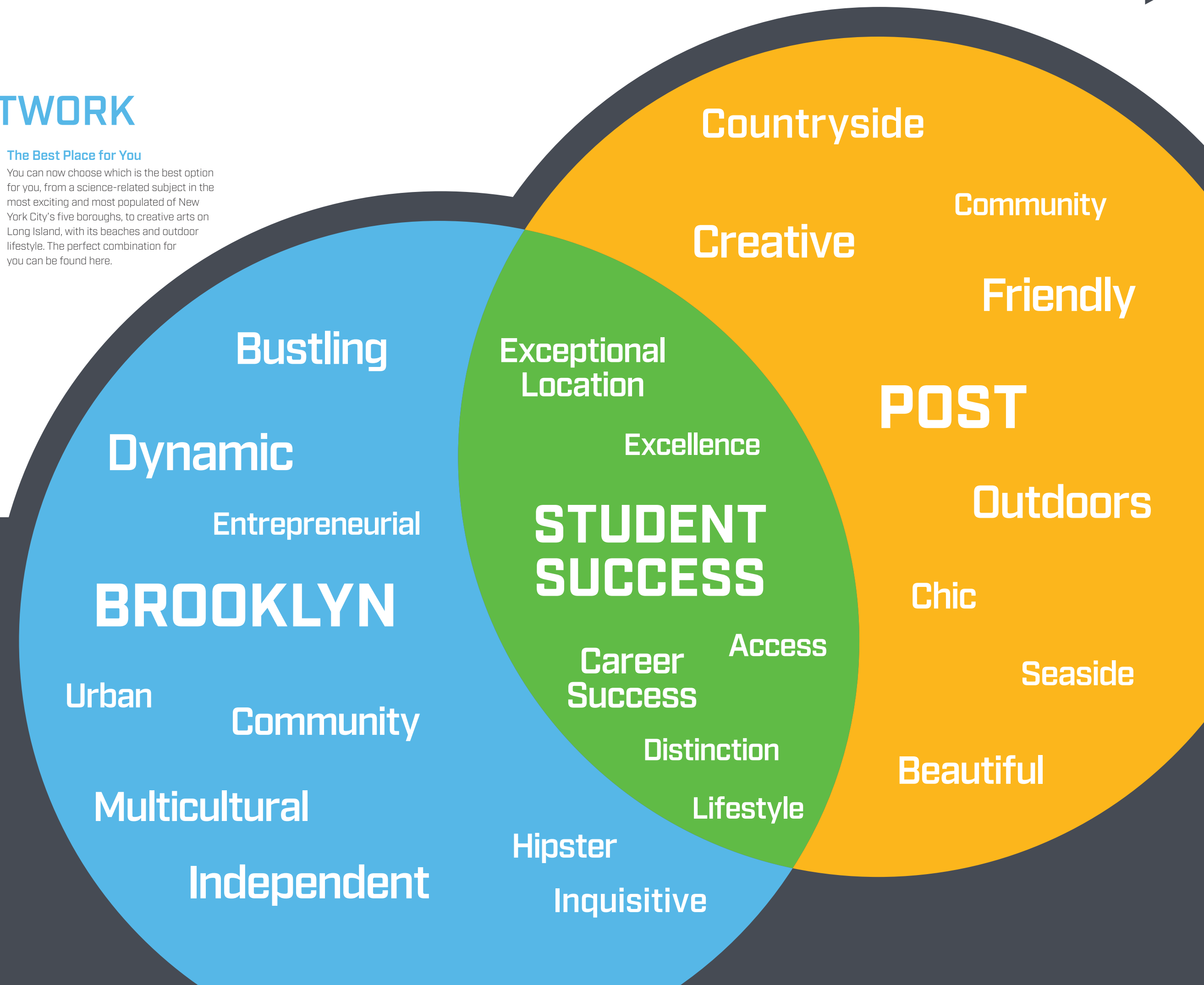
## Access and Excellence

Our mission is Access and Excellence, and that is exactly what direct admission via Study Group provides: access to a U.S. University that offers career excellence. LIU Brooklyn and LIU Post both offer excellent locations and lifestyles, and above all, unique programs designed to get you on the path to a successful career in your field. With an unrivaled student to faculty ratio of 14:1, LIU will ensure you have personal attention and support to help you through your studies and reach your potential.

## The Best Place for You

You can now choose which is the best option for you, from a science-related subject in the most exciting and most populated of New York City's five boroughs, to creative arts on Long Island, with its beaches and outdoor lifestyle. The perfect combination for you can be found here.

WHICH LIU ARE YOU?





# INNOVATIVE, URBAN BROOKLYN

If you're looking for the **ultimate city experience**, living in – and being a part of – Brooklyn's busy and **exciting neighborhood** is for you. Live and study in the **"Tech Triangle"**, with some of the world's **leading companies** on your doorstep. With all this, plus some of the world's biggest events and most famous entertainment venues both locally and in Manhattan, you'll **never be bored** in New York City.

## BROOKLYN



"No matter where I go, I meet people from Brooklyn. I'm proud of that heritage. It's where I'm from, who I am."

Howard Schultz

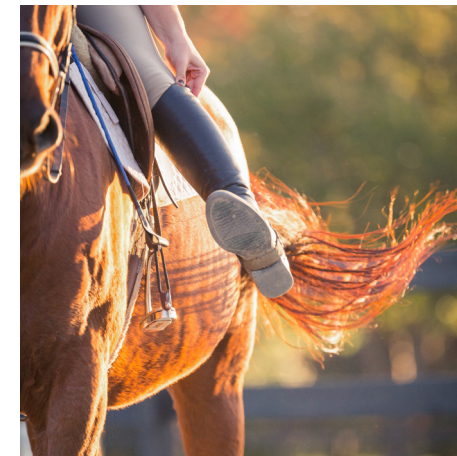
# CHIC, RELAXED POST

Looking for **space to think** and focus while remaining close to a major city? Post offers a **friendly community**, with **outdoor activities** and a calm lifestyle to give you the time to get the most from your degree. Try something new, like **sailing** or **horse riding**, or just **enjoy** living in the place New Yorkers flock to each summer for vacation.



F. Scott Fitzgerald based his popular novel 'The Great Gatsby' in the Gold Coast of Long Island, where Post is located

## POST





# LIU BROOKLYN

Multicultural Brooklyn is famous around the world. From the music of Jay-Z, to the hot dog, Brooklyn has had an impact far larger than the size of the borough of New York City.

## “Concrete Jungle Where Dreams Are Made...”

Although small, Brooklyn is the most highly populated borough in the city, giving it a bustling and energetic feeling. You can find arts, science, and business communities all in close proximity, and often working together.

These days, Brooklyn is known for a number of technology start-ups that have found a home there, reflecting the forward-thinking nature of the area. This is known as the ‘Tech Triangle’, and with LIU Brooklyn located within the triangle, there are plenty of opportunities for students to network with the technology community.

Brooklyn is open-minded, edgy and dynamic, appealing to those who are interested in setting their own path and being a part of a growing scene.

Among the **Top 5%** of the nation’s universities for ethnic diversity

College Factual, 2019

Prospect Park borders **5 Brooklyn neighborhoods** and welcomes **10 million visitors** every year

**Rated A for location and diversity** Niche.com, 2019

Brooklyn is the **4th largest city** in the USA by population

New York City’s **one and only aquarium** is found in Brooklyn

The Brooklyn Bridge is **1.8 kilometers** (1.1 miles) long

Coney Island, located in Brooklyn, is home to the **legendary 1927 roller coaster**, the Cyclone

## “There’s Nothing You Can’t Do”

To the northeast of the LIU Brooklyn campus lies Williamsburg, the area famous for the “hipster” movement. Here you will find coffee shops, nightlife and a wide range of places to eat. It even has its own market, Smorgasburg, open every weekend, where you can sample local street food.

Throughout Brooklyn you can go shopping in the array of local boutiques, home to vintage fashion and emerging designers. You can also catch the subway to Manhattan and check out the famous Macy’s and Bloomingdale’s department stores.

Manhattan offers the traditional New York City tourist experience; take a trip up the Empire State Building or marvel at the enormous Grand Central Terminal. You can hire a rowboat on Central Park’s lake or find something to eat at some of the world’s best restaurants.

However you choose to enjoy Brooklyn and the rest of New York City, there’s something for you here.

## LIU Brooklyn

Our friendly campus is located close to the iconic Brooklyn Bridge. Student residences, academic facilities and lecture theaters are housed in both traditional and modern buildings that are connected together by a series of enclosed bridges.

Although the campus is located in an urban area, our gated campus offers beautifully landscaped areas in which to study, meet with friends or just relax.

## Brooklyn Is New York’s College Town

LIU Brooklyn is located just steps away from the Barclays Center and top arts venues like BAM. It is also near the hip restaurants, boutiques and cafés of Fort Greene. And it’s only a short subway ride to the vast cultural offerings and professional opportunities of Manhattan.



## Improve Your English Skills With ESL

The English Language Institute (ELI) at LIU Brooklyn is dedicated to helping ESL students improve their English skills to make the most of the American university experience. Place yourself in a much stronger academic position by taking our Intensive English Program. This program will help you gain confidence and feel better prepared for your degree by improving your English language skills and introducing U.S. culture. Each year, nearly 80 students graduate from our ESL program and begin full-time undergraduate or graduate study at LIU Brooklyn.

The course can take one or two semesters to complete and includes:

- Language skills – listening, speaking, writing and reading
- Academic preparation – library mentoring program, tutoring services, labs, exam skills, and note-taking
- Cultural adaptation

You will benefit from 20 hours per week of instruction in small classes of 12 to 15 students, taught by caring, expert teachers.



Student population:  
**5,721 (3,164 undergraduate;  
2,557 graduate);  
international students from  
more than 50 countries)**

Full-time faculty: 257

Faculty holding the highest  
degrees in their field: **86%**

Seven colleges: **Business,  
Public Administration and  
Information Sciences;  
Education; Health Professions;  
Liberal Arts and Sciences; LIU  
Global; Nursing; and Pharmacy**

University accreditations:  
**Middle States Commission on  
Higher Education (MSCHE)**

Program accreditations:  
**ACOTE, ACPE, ARC-PA, APA,  
ASEP, ASHA-CAA, caATE,  
CAPTE, CAAHEP, CoARC,  
CSWE, NASPAA, TEAC**



# YOUR FUTURE IN NEW YORK CITY

## Preparing You for Your City Career

During your degree program you will have the opportunity to intern in the local area, including Wall Street (just a 10-minute subway ride away from campus), and Brooklyn's innovative "Tech Triangle."

In addition to this, LIU Brooklyn has a thriving entrepreneurial community, with two successful student-run businesses operating on campus. You can join one of the many student organizations that relate to your career path, including the American Public Health Association Student Assembly, the Sport Management Club, or the Pharmacy Student Leadership Council.

## Help to Plan Your Career

Getting ahead in your career takes more than academic skills and relevant experience. You also need to understand the job application process and how to present yourself confidently in interviews.

The LIU Brooklyn career services staff will help you discover how to write a professional résumé and cover letter. They also conduct practice interviews and skills assessments to prepare you for the real thing. Networking nights and career fairs will help you make connections to industry, and the online career management system will help you plan for your future.

## To the City and to the World

LIU alumni benefit from an international network of contacts, excellent facilities and can help shape the future of the University through supporting new students and participating in events.

## LIU Handshake

As a student here, you will have access to the University's online job-site portal, LIU Handshake. You can use it to find internships, job fairs and events, as well as connecting with potential employers.

# 265,000

alumni globally

# 20,000

School of Pharmacy alumni

# 3,000

LIU Global alumni



One of the top “hot colleges in the making” Forbes, 2018

**Top 5% Highest Paid Grads:**  
**Nursing**

College Factual, 2020

**Top 5% University** for Health Professional Majors

College Factual, 2020

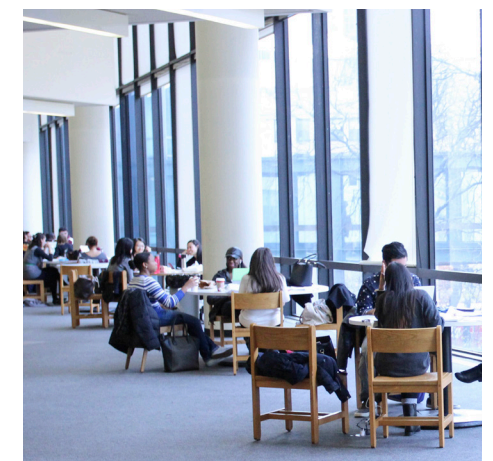
**LIU Brooklyn** benefits from **strong links with business**

**LIU Brooklyn students have interned for world-famous companies, including:**

- The New York Stock Exchange
- KPMG
- Donna Karan Company
- The Metropolitan Museum of Art
- Marvel Comics
- US Environmental Protection Agency

**New York is home to more than 70 Fortune 500 companies including**

- JPMorgan Chase
- Verizon Communications
- Citigroup
- MetLife
- Pfizer





# LIFE AT BROOKLYN

## On Campus

Our friendly and safe campus is located close to the Brooklyn Bridge, an icon recognized around the world. You'll also be within walking distance of the Barclays Center, the Brooklyn Academy of Music and amazing restaurants and shops.

## Find a New Interest

With more than 85+ student clubs, organizations, and athletic teams, including arts, culture, the environment, student government, healthcare, the media, sports, and recreation, it is easy to get involved.

## ■ The Steinberg Wellness Center includes a swimming pool, gym, rooftop running track, tennis courts and a 2,500-seat sports arena ■

Becoming a member of a club will immerse you in campus life and help you build friendships. Being a part of these communities not only offers the chance to try something new, but an opportunity to develop skills for your future.

## Stay Active in the City

There are a number of on-campus programs, services and facilities to keep you fit and healthy. The Steinberg Wellness Center includes a swimming pool, gym, rooftop running track, tennis courts and a

2,500-seat sports arena. 31 sports teams represent the University in athletic leagues and tournaments, including basketball, soccer and cross-country running.

## Culture and Entertainment

The on-campus Kumble Theater for Performing Arts is the place to see a diverse range of music, dance and theatre. To watch a movie, play video games or relax over a game of pool at The Avena Lounge – eat, drink, socialize, and study until late throughout the week. It is a student-run business, so you can even build some professional skills by getting involved in managing it.

## Join in with “Greek” Life

If you're interested in the traditional American college experience seen in the movies, you can choose to join a fraternity or sorority during your studies. Known as “Greek” membership, joining one of these houses provides the opportunity to develop valuable leadership skills, get involved with the local community, join social activities, and form lifelong friendships.



Brooklyn has so many things that you can do, and New York is the city that never sleeps. Another thing I love about Brooklyn is the people here are really welcoming and it feels safe and friendly. I also like that there are people from different ethnicities who live together here.

**Maneesh, India**  
MBA Business Administration  
and MS Computer Science



Soak up the Brooklyn vibe

Try joining one of the **31 sports teams** or come along and support the team!



Compete on one of our sports teams

Brooklyn in stats:

**30 miles** of shoreline

Almost **40%** of current Brooklynites are born overseas

**10-minute** subway ride to Manhattan

## Residence Halls

The three residential halls on campus provide a choice of standard, suite, and apartment spaces. All rooms include a twin-sized bed, desk, micro-fridge and air conditioner. You can also choose a meal plan to help save on food costs and make sure you've always got energy to focus on your studies.

Each residential hall also has:

- Free Wi-Fi and cable
- Study lounges
- Recreation rooms
- TV lounges
- Laundry rooms
- 24/7 security

When it comes to housing, safety is our number one priority. The campus is self-contained, fully protected on all sides by gates and has on-site security guards 24/7.

## Dining

You will find a variety of food options across campus. Whether you need a caffeine boost before class, or want to sit and enjoy a meal with your friends, you will find plenty of great choices on campus and at nearby restaurants.

- The Blackbird Café offers American, international, and vegetarian options
- Luntsey Commons food court includes a Starbucks coffee shop and a selection of Mexican food, burgers, salads and sandwiches
- The Smoothie Bar is the perfect spot to pick up a refreshing smoothie, soup or snack after a workout
- Peet's Coffee is another coffee shop that offers breakfast and snacks.

## Safety First

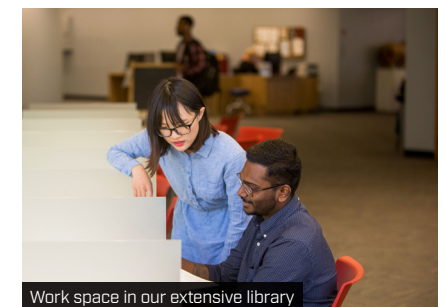
Long Island University places a distinct importance on inclusion and safety, taking all possible steps to help ensure an exceptional experience while living and learning on campus. Join in on the conversation via social media to find out more about the ongoing campaign, letting the international community and future students around the world know that **#YouAreWelcomeHere**.

## Security Services

- 24-hour foot, bicycle and vehicle patrols
- Late-night walking escort service
- 24-hour emergency telephones
- Lighted walkways
- Residence entry card system
- Crime prevention programs
- Personal safety workshops.



Student accommodation



Work space in our extensive library



Meet friends and have a break in our canteen



# LIU POST

The Post campus is located on Long Island's Gold Coast, the vacation destination of choice for many of New York City's residents.

## Green and Gold

The Gold Coast inspired the classic novel "The Great Gatsby," and the historic campus is located on the 307-acre estate of the Post Cereal family. With three mansions on-site, 4,000 trees and nature trails throughout, LIU Post offers an idyllic haven for those wishing to be part of a community and have an outdoors lifestyle.

As suggested in the name, the Gold Coast has a beautiful sandy coastline, where you can relax or hire a boat and go sailing. The nearby woodlands also offer horse riding and hiking when you want a break from your studies.

## Arts, Culture and Entertainment

New York City is less than an hour away by train so you can easily get into the city and visit some of the famous attractions.

On campus, the Tilles Center for the Performing Arts is Long Island's leading venue for world-class cultural events. Students can attend and learn from professionals in the arts and the business-side of the arts.



## Top 15% Highest Paid College Graduates: Education

College Factual, 2020

## Ranked one of the Best Northeastern Colleges

The Princeton Review, 2020

## Top 5% Most Focused: Nutrition and Top 10% Health Professions

College Factual, 2020

Students from LIU Post have interned at high-profile companies in New York, including **IBM**, **Chanel**, **KPMG** and **The New York Times**

**Student Entrepreneurs:** LIU Post has 8 student-run businesses, plus the Browse store, which is student-staffed.



## Sports and Athletics

State-of-the-art sports facilities make LIU athletes leaders on the track and field. Student-athletes here combine their academic reputation with an impact in the community and benefit from the division-leading teams. The Sharks compete in NCAA Division I athletics and are members of the Northeast Conference. Athletic achievements include 23 national championships, 6 Olympians, 68 professional draft picks.

## Business Skills

For students who are interested in becoming entrepreneurs, the Student-Run Businesses program will teach you leadership skills and give you experience in every business function along the way. Proceeds are put back into the University to provide more student ventures and fund scholarships.



## Improve Your English skills with ESL

The English Language Institute (ELI) at LIU Post is dedicated to helping ESL students improve their English skills to make the most of the American university experience. Place yourself in a much stronger academic position by taking our Intensive English Program. This program will help you gain confidence and feel better prepared for your degree by improving your English language skills and introducing U.S. culture. Each year, nearly 80 students graduate from our ESL program and begin full-time undergraduate or graduate study at LIU Post.

The course can take one or two semesters to complete and includes:

- Language skills – listening, speaking, writing and reading
- Academic preparation – library mentoring program, tutoring services, labs, exam skills, and note-taking
- Cultural adaptation.

You will benefit from 20 hours per week of instruction in small classes of 12 to 15 students, taught by caring, expert teachers.

**8** minutes from Long Island's beautiful beaches

**22** miles to New York City

**330** acres of stunning countryside

Student population: **4,742** [2,977 undergraduate; 1,765 graduate] including **750** international students from **49** different countries

Full-time faculty: **234**

Faculty holding the highest degrees in their field: **90%**

Six colleges: **Management; Visual and Performing Arts; Health Professions and Nursing; Education, Information and Technology; and Liberal Arts and Science**

Accreditations: **AACSB, APA, American Speech-Language-Hearing Association, American Chemical Society, CCNE, CSWE, NAACLS, CAAHEP, CACREP, American Dietetic Association, American Art Therapy Association, National Association of Schools of Public Affairs & Administration, Joint Review Committee on Education in Radiologic Technology, American Library Association**



# LIFE AT POST

## On Campus

Our large campus is set in beautiful countryside where you can enjoy relaxing or try new activities. Broaden your horizons and explore new opportunities with nearly 80 athletic teams, student clubs, and organizations – including arts, the environment, student government, healthcare and media.

## Culture and Entertainment

The Tilles Center for the Performing Arts brings popular comedians, singers and bands to campus with discounted tickets for students. Hillwood Commons Lecture Hall is another popular venue for plays, small concerts, lectures and coffee.

Visual and Performing Arts Facilities

- 2,200-seat concert hall
- 490-seat recital hall
- Cinema and two theaters
- TV and radio stations with two newsrooms
- Interactive multimedia arts lab
- Music technology lab.

## Global Citizens

Our students give back to local and global communities through service organizations, charity events and social awareness initiatives. LIU Post students devoted more than 25,000 hours to community service in recent years, earning a place on former President Obama's Community Service Honor Roll.

## ■ Our students give back to local and global communities through service organizations ■

LIU Post Students...

- Build homes in Mexico
- Develop fundraising strategies for local charities
- Organize toy drives
- Volunteer at local soup kitchens
- Counsel families affected by 9/11
- Work with disabled children
- Raise funds for breast cancer research
- Are eco-friendly and volunteer for clean-up initiatives.

## Keep Active

The Recreational Sports Department is committed to providing you with the best programs, services and equipment. It enriches your university learning experience and fosters a lifetime commitment to health.

Sports and Fitness Facilities

- Eight-lane swimming pool
- Three full-size basketball courts
- Racquetball courts
- Elevated indoor jogging track
- Classes in yoga, pilates, Zumba, abs, and total body conditioning
- Club and intramural sports: ice hockey, equestrian, dance, badminton, and more
- North Shore Equestrian Center and horse riding trails.



Join in with sporting activities



Extensive computer and library facilities



Enjoy study in our beautiful and relaxing grounds

One of the **fastest growing Greek communities** in the region and home to many of the nation's largest fraternities and sororities

Over **70+ student clubs & organizations**

## Residence Halls

About 1,600 students live in eight residence halls on the LIU Post campus. Some are traditional-style, offering two, three, or four- person rooms that open onto a common hallway. All share a large bathroom.

Every residence hall offers lounges for relaxation or study, as well as snack areas with vending machines and convection ovens, and fully equipped laundry rooms.

## Meal Plans

You can choose a meal plan that will provide your food each day, saving you time and money. This includes:

- Unlimited daily access to the residential restaurant, and one weekday lunch at the express restaurant
- \$125 Dining Dollars per semester for use at any on-campus dining facility (extra Dining Dollars can be purchased at any time)

## Hillwood Commons

This three-story building is the student and community hub of LIU Post. It features a large cafeteria, Starbucks, Subway, lecture hall, movie theater, museum, computer lab, gaming lounge, student organization offices, student information center, student-run businesses, and a variety of areas for group study, recreation and quiet contemplation.

## Student Services

LIU Post offers a range of resources to guide you on your journey through college life. Our student services are designed to help you take care of official university business and stay organized. Our resources include academic counseling, tutoring, career services, financial assistance, records and registration, bursar services, health and wellness counseling, online transcript requests, ID cards, transportation services, religious life and the MyLIU student web portal.

## Security Services

- 24-hour foot, bicycle and vehicle patrols
- Late-night walking escort service
- 24-hour emergency telephones
- Lighted walkways
- Residence entry card system
- Crime prevention programs
- Personal safety workshops.



I'm so glad that I came. I love the campus, it's so beautiful, and I love the program, I love campus life, I do many activities and I love them all.

It's really central, and it's close to the train station so you can go to Manhattan any time that you want.

**Karen Chayban, Mexico**  
**MS Nutrition**



Student accommodation



LIU Post student canteen



# YOUR CAREER AFTER POST

LIU alumni benefit from an international web of contacts and can help shape the future of the University through supporting new students and participating in events. When you graduate, you'll be part of a network of 265,000 alumni globally.



LIU Post alumni have achieved success in a variety of fields:

**Golden Globe** nominee  
**CEO** of Turner Broadcasting  
**Pokémon USA entrepreneur**  
**Developer** of modern pre-natal screening  
**Producer** of the 37th Super Bowl (the major annual American Football event)  
**Emmy Award** winning news journalist and TV Host  
**Actor** in The Lion King on Broadway



Learn to write a professional résumé and cover letter.



Alumni entertainment benefits:

**Barclays Center:** Discounted tickets to shows and sporting events at Barclays Center, including the Brooklyn Nets

**Tilles Center for the Performing Arts** at LIU Post: Discounted tickets at the student price

**Kumbe Theater for the Performing Arts** at LIU Brooklyn: Discounted tickets at the student price

## Plan Your Career

Getting ahead in your career takes more than academic skills and relevant experience. You also need to understand the job application process and how to present yourself confidently in interviews.

The LIU Post career services staff will help you learn how to write a professional résumé and cover letter. They also conduct practice interviews and skills assessments to prepare you for the real thing. Networking nights and career fairs will help you make connections to industry, and the online career management system will help you plan for your future.

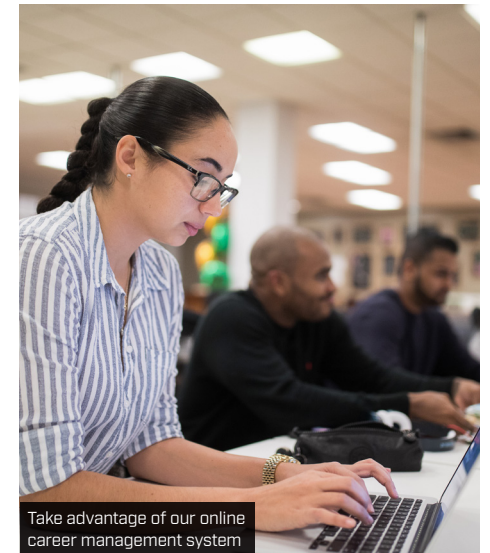
## Start-Up NY

Start-Up NY is an economic development program created to promote partnerships between businesses and higher education. Participating businesses include start-ups, established businesses moving to New York and expanding New York businesses.

These businesses create new jobs in their first year, bring positive community and economic benefits, and align with the mission of the University in key academic areas. Additionally, as part of the program, new employers will provide LIU Post students research and internship opportunities in addition to creating jobs.



Make the most of internship opportunities through the 'e-lab'.



Take advantage of our online career management system



Discount tickets for alumni at the Tilles Center



# PROGRAMS

LIU plans to **welcome students back to campus for fall 2020** classes. For those students unable to arrive on campus this fall, **all programs<sup>1</sup> will also be offered online.**

To learn more about LIU's reopening plans, visit: [liu.edu/reopening-liu](https://liu.edu/reopening-liu)

## Undergraduate Programs

Degree category and name	LIU Brooklyn	LIU Post
Visual and Performing Arts		
Art (Fine, Studio, Visual)		•
Art Education (B-12)		•
Art Therapy		•
Dance Studies		•
Music		•
Music Education (B-12)		•
Theater/Acting/Theatre Arts	•	•
Business		
Accounting	•	•
Actuarial Science		•
Art and Entertainment Management		•
Artificial Intelligence	•	•
Business Administration (Commerce, Informatics, Management)	•	•
Computer Science	•	•
Economics		•
Entrepreneurship (Social, Community, Management)	•	
Fashion Merchandising		•
Finance (Business, Quantitative)	•	
Human Resources Management	•	
Management (Studies/Science)	•	
Marketing (Integrated)	•	
Communications		
Broadcasting		•
Communication	•	•
Digital Game Design and Development		•
Film		•
Journalism	•	•
Media Arts, Digital Art & Design	•	•
Music Technology, Entrepreneurship and Production		•
Sports Communication and Marketing	•	
Health and Human Services		
Exercise Science and Wellness	•	
Food, Nutrition and Wellness		•
Health (Sciences, Administration)	•	•
Occupational Therapy	•	
Radiologic Technology		•
Respiratory Care	•	
Social Work	•	•
Speech and Language Pathology and Audiology		•
Sport Management	•	•

### BS Business Management

The Bachelor of Science in Management is designed to give students a broad perspective of organizational management and the marketplace. It also helps students develop the sound judgment and professional competency necessary for a career in any business field.

Students receive in-depth training in managerial planning, human resources management, decision-making, and more.

Degree category and name	LIU Brooklyn	LIU Post
School of Nursing		
Accelerated Nursing	•	
Biomedical Science: Clinical Lab Science - Generalist		•
Biomedical Technology		•
Cardiac Sonography Certificate	•	
Diagnostic Medical Sonography	•	
Nursing	•	•
Nutrition and Dietetics		•
Humanities and Social Sciences		
Criminal Justice		•
English	•	•
Forensic Science		•
Global Studies	•	
Humanities/Liberal Arts	•	
Interdisciplinary Studies		•
International Relations (and Diplomacy)	•	•
Political Science	•	•
Paralegal Studies	•	•
Psychology	•	•
Social Science	•	
Science, Technology and Engineering		
Biological Sciences (Biology, Biochemistry, Bioinformatics, Microbiology)	•	•
Chemistry	•	
Computer Science	•	•
Mathematics		•
Veterinary Technology		•
Education		
Childhood Education/Early Childhood Education	•	•
Childhood Education 1-6/TESOL All Grades		•
Childhood Education/Early Childhood Education		•
Childhood Education/Special Education (1 - 6)		•
Childhood Urban Education	•	
Early Childhood Education/Special Education (B - 2)		•
Early Childhood Education/TESOL All Grades		•
Inclusive Early Childhood Education	•	•
Educational Studies (Early Care and Education, Youth Development and Education)		•
Health Education/Physical Education		•
Middle/Secondary		•
Music Education		•


### The LIU Global College Bachelor of Arts in Global Studies

This international course of study focuses on the world's most pressing issues, seen through the lenses of Governance, Culture, Ecology and Economics, with extensive experiential learning and intensive training in research and writing. LIU Global students spend six semesters studying outside of the United States, first in Latin America; then Europe; and then Australia or China. Your senior year independent research internship is conducted in a country of your choosing, before returning to the LIU Brooklyn campus for the final semester to complete your senior research theses.

## Graduate Programs

Degree category and name	LIU Brooklyn	LIU Post
Visual and Performing Arts		
Art Education		•*
Music Education		•
Writing and Producing for Television	•	
Business		
Accounting		•
Artificial Intelligence	•	•
Business Administration (Accounting <sup>1</sup> , Entrepreneurship, Finance, Human Resource Management, International Business, Management, Management Information Systems, or Marketing)	•	•*
Computer Science	•	
Data Analytics and Strategic Business Intelligence		•
Health Administration (Management/Policy)	•	•
Human Resources Management	•	
Information Studies (PhD)		•
Management Engineering		•
Public Administration	•	•
Technical Project Management		•
Health and Human Services		
Adult Gerontology Primary Care Nurse Practitioner	•	
Adult Gerontology Primary Care Nurse Practitioner Adv. Certificate	•	
Applied Psychology		•
Behavior Analysis		•*
Behavior Analysis Adv. Certificate		•
Clinical Laboratory Management		•
Clinical Laboratory Science		•
Clinical Psychology	•*	•
Dietetic Adv. Certificate		•
Exercise Science	•	
Food Science, Dietetics, Nutrition		•
Forensic Social Work Adv. Certificate	•	•
Nutrition		•
Public Health	•*	
Physical Therapy	•	
Physician Assistant	•*	
Psychology	•	•*
Social Work	•	•
Humanities and Social Sciences		
Archives and Records Management Adv. Certificate		•
Creative Writing	•	
Criminal Justice		•
English		•
Genetic Counseling		•
Psychology	•	•*
Public Library Administration		•
Speech-Language Pathology	•*	•*

<sup>1</sup>Accounting (M.B.A.) is unavailable at LIU Brooklyn for 2020.

Degree category and name	LIU Brooklyn	LIU Post
Science, Technology and Engineering		
Biological Sciences (Biology, Biochemistry, Microbiology)	•	•
Biomedical Sciences		•
Earth Science		•
Management Engineering		•
Doctor of Veterinary Medicine		•
Education		
Applied Behavior Analysis Adv. Certificate	•	
Bilingual Education Adv. Certificate	•	
Bilingual School Counselor	•	
Childhood/Early Childhood Urban Education - 1st Initial Certification	•	
Childhood Education/ Special Education		•
Clinical Mental Health Counseling Adv. Certificate		•
Early Childhood / Childhood Education	•*	•
Early Childhood Urban Education	•	
Early Childhood and Urban Education (Adv. Certificate)	•	
Educational Leadership		•
Educational Technology		•
Interdisciplinary Educational Studies EdD		•
Library and Information Science (General, School Library Media)		•
Marriage and Family Therapy	•	•
Marriage and Family Therapy Adv. Certificate	•	
Mental Health Counseling (Clinical, General)	•	•
Mental Health Counseling Adv. Certificate	•	
School Counselor	•	•
School Counselor Adv. Certificate	•	
School District Business Leaders		•
School District Business Leader Adv. Certificate		•
School Psychologist	•*	
Students with Disabilities Generalist (7 - 12)		•
Teaching English to Speakers of Other Languages (TESOL)		•*
Urban Adolescence Inclusive Education	•	
Pharmacy and Health Sciences		
Drug Regulatory Affairs	•*	
Pharmaceutics (Cosmetic Science, Industrial Pharmacy)	•*	
Pharmaceutical Sciences (PhD)	•	
Pharmacology/Toxicology	•*	
Pharmacy (PharmD)	•	
Pharmacy Administration	•	
Visual Arts, Communications, and Digital Technologies		
Clinical Art Therapy and Counseling		•
Media Arts (Audio Production, Computer Graphics, Film/Video Production, Media Management, Photography)	•	
Other		
Homeland Security		

<sup>\*</sup> GRE/GMAT may be needed upon application.

 Online-only course

### MPH Public Health

The Master of Public Health is a professional degree program for individuals seeking training and experience in applied public health. The 42-credit program has strong working relationships with community organizations and health care providers, as well as with the New York City Department of Health and Mental Hygiene.

### MS Management Engineering

The Master of Science in Management Engineering provides students with the knowledge and skills required to be effective leaders in multidisciplinary project teams. Designed for engineers and other technical professionals to develop the skills and knowledge base necessary to be effective project managers. The flexible program allows students to combine the required courses with a variety of electives in order to further personal interests.



# HOW TO APPLY

If you would like to apply to study at LIU, you will need to complete an application form and submit the relevant documentation.

We are always happy to answer your questions and help with your application. Our advisers speak a variety of languages, and understand several more. We will do our best to contact you in your preferred language.

## Apply online

universitiesintheusa.com

Please include LIU Post or LIU Brooklyn in the subject line.

## Apply via a local counselor

Please contact your counselor if you have any questions.



I love that it's so close to Manhattan yet far enough away that you don't feel like you're being swamped by everybody. It's busy and it's up and coming and the population is very young. Williamsburg is only down the road, it's full of people my age and it's a good place to be.

**Jake, England**  
**BA Accounting**



I really love Long Island, it's so quiet and nice, but you're just fifteen minutes from the city. It's so cool.

**I cannot give up this campus. I really love it, I can just walk anywhere, we have every single thing we need, and I wouldn't change anything.**

**Gizem, Turkey**  
**MS Nutrition**



If you're interested in getting to know a lot of people from different cultures, that's the biggest plus and also getting hands-on experience in your field. They give you a lot of advice, professors are always there to help, and they're always there for you, whenever, they reply to emails late at night. Their library's very good, the resources are great for learning and I think people here are very helpful. Overall everybody's nice and friendly.

**Juliana, Costa Rica**  
**MS Exercise Science**





## Getting Around

**LIU Brooklyn** The campus is walkable and the nearby DeKalb Ave subway station quickly goes to Manhattan or other parts of Brooklyn.

**LIU Post** Students can go from New York City to Long Island from Penn Station or the Atlantic Terminal on the Long Island Rail Road (LIRR). There is a 40-minute ride to Hicksville where an LIU Post shuttle takes students to and from the university campus every 20 minutes.

New York City is central to many other great American cities that can be easily accessed by affordable train rides from Manhattan. Or, a flight can be booked at one of three major airports. We encourage students to explore the U.S.A. with their friends during holidays and breaks.

## Distance from Penn Station or Grand Central to other train stations:

Newark, NJ – 25 min  
 Philadelphia, PA – 1.5 hours  
 Baltimore, MD – 3 hours  
 Providence, RI – 3 hours  
 Washington, DC – 3.5 hours  
 Boston, MA – 4 hours

This prospectus is issued for the general guidance of students considering entry to Long Island University in 2020.

The information is correct at the time of going to press. However, Long Island University reserves the right, to amend, add or remove any program and/or services set out in this brochure and/or the timetable, delivery, content syllabus and assessment of such programs. Applicants to programs will be notified as soon as practicable of any material changes likely to have a bearing on their application, such as cancellation of, or major modification to programs offered, changes to accommodation provision or fees and charges to be levied where applicable. Neither the University nor Study Group shall be liable for any errors or omissions that may be contained.

Study Group is a global leader in preparing students for international academic success and rewarding careers through a life-changing learning experience. Study Group taught more than 60,000 students from 150 countries across the UK, Europe, USA, Canada, Australia and New Zealand in 2017.