

University of  
Hertfordshire **UH**

# International Guide

2021/22



Awarded

**Gold**

for Teaching  
Excellence

*Teaching Excellence and Student  
Outcomes Framework (2018)*

Get to central

**London**

from Hatfield in just 25  
minutes by train

Join over

**24,500**

students from the UK  
& around the world

Huge

**93%**

of graduates in work or further  
study within 15 months

*Higher Education Statistics  
Agency (2020)*

Awarded the

**Platinum**

EcoFriendly campus  
award

*EcoCampus (2018)*

**Contents**

## Contents

- 2** Where to find us
- 4** Why choose Herts?
- 6** Our campuses
- 8** Award-winning facilities
- 10** Student life
- 12** Study areas
- 14** Accommodation
- 16** Support on campus
- 18** Applying to Hertfordshire
- 20** Scholarships & fees

## Images

- 6** *College Lane Campus*
- 7** *de Havilland Campus*
- 9** *Law Building*
- 10** *The Retreat, LRC*
- 12** *Science Building*
- 17** *The Oval*
- 21** *Hutton Hub*

# Where to Find us



The University of Hertfordshire's welcoming, modern campus is in the town of Hatfield in Hertfordshire, in the South East of England. Hatfield is just a short 25-minute train ride from London's King's Cross station and not far from the A1(M); one of the UK's major north-south motorways.

Thanks to these strong transport links, it's easy to travel to and from London and the rest of the UK. We also have fast links to London's major airports – Heathrow, Gatwick, Stansted and Luton – so wherever you're flying from, it's easy to reach us when you land.

For more maps, travel advice, and information about Hatfield, just visit [go.herts.ac.uk/where-to-find-us](http://go.herts.ac.uk/where-to-find-us)



# Why Choose Herts?

---

## Access to London

If you're looking for a university with a great location, you've found it. Studying just 25 minutes by train from Central London gives you easy access to all the opportunities and excitement our colourful, multicultural capital brings. Spend your free time relaxing in beautiful parks, galleries and historic sites in this international hub of business.

## Recognised Degree

The UK education system is highly respected all over the world; a strong British degree really is a passport to a rewarding career, wherever you want to live and work. Our universities are continuously assessed to make sure we give you the exceptional education you deserve.

## Staff Experience

Our lecturers have a wealth of experience in their field; not just in an academic setting, but also out in the working world. They've built businesses, developed technologies, saved lives, pushed boundaries and made a real difference. Now they're here to help you do the same.

## A Message From the Vice-Chancellor

---



Here at the University of Hertfordshire, we are committed to providing you with the skills you need to excel in your chosen career path. There are so many great things about studying with us, and I hope this guide will give you a good indication on what we can offer you.

Everything we do at Hertfordshire is about transforming lives. You will develop work-based skills, build a global friendship network, and gain professional work experience, all while studying on a vibrant campus that is just 25 minutes from central London.

We are already home to over 4000 international students from over 100 different countries – and we really hope you will join them. We're proud to be able to offer you an exciting and supportive place to study.

Studying with us is a life-changing experience and we take pride in knowing that you'll leave us with the skills, knowledge and attributes to make a real difference in the world.

**Quintin McKellar CBE**

## A Message From the Director of International

---



We are very excited to introduce you to the University of Hertfordshire. We are very proud of our institution and what we can offer our international students. We are a vibrant University with a diverse student body both on campus and abroad, and we would be thrilled for you to join them.

We offer a wide range of courses in a variety of subject areas which have been developed in conjunction with local business partners, to assure that you are learning the most up to

date and relevant material. We are confident that the practical experience you will gain during your studies will help prepare you for the global workplace.

We have a global network of support to assist you every step of the way in your journey to studying with us. If you choose the University of Hertfordshire, you will be surrounded by state-of-the-art accommodation and study facilities.

**Stuart Smith**

# Our Campuses

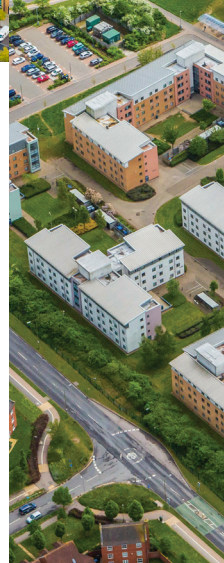


## College Lane Campus

is home to our science and creative arts subject areas. Students in our School of Physics, Engineering and Computer Science, School of Life and Medical Science, School of Health and Social Work, or School of Creative Arts will study on this campus. In addition, this is home to many of our student services and our international foundation college.

## Key Facilities

- 01 Fashion Teaching Building
- 02 Film, Music and Media Building
- 03 Main Reception
- 04 Engineering Department
- 05 Science Building
- 06 LRC (Library)
- 07 Hertfordshire International College
- 08 Hutton Hub
- 09 Students' Union
- 10 The Oval Accommodation Hub
- 11 ElelHouse
- 12 Multi-Faith Space (The Key)
- 13 The Forum Hertfordshire
- 14 Accommodation







**de Havilland Campus** is home to four academic Schools of Study: Hertfordshire Business School, Hertfordshire Law School, School of Education and School of Humanities. Here you'll also find our extensive Sports Village, our main performing arts venue; the Western Auditorium, and our new Enterprise Hub, which houses our business incubation facilities.

### Key Facilities

- 01 Law Building
- 02 Enterprise Hub and Café Ambition
- 03 LRC (Library)
- 04 Accommodation
- 05 Weston Auditorium
- 06 de Havilland Restaurant
- 07 Multi-Faith Space
- 08 Main Teaching Building
- 09 25 Metre Swimming Centre
- 10 Hertfordshire Sports Village



# Award-Winning Facilities

---

Over the past 20 years we've invested almost half a billion pounds in our green campuses which span 125 acres, allowing you to study and live within easy reach of London.

Live on-campus in our £120 million student accommodation village so that you can walk to your lectures within minutes.

Our libraries are open 24/7 nearly every day of the year, allowing you to study at a time that suits you. With our inspiring learning spaces and cutting edge facilities, you have everything you need on your doorstep.

Those wishing to have a bite to eat can choose from two restaurants, eight cafes and two pubs which cater to a variety of dietary requirements including vegetarian, vegan and Halal. You can also pick up essentials at our numerous shops.

Stay healthy with a visit to the de Havilland Sports Village, which has cardio and weights areas, 100+ station gym, 25m swimming pool, climbing wall, and sports courts.

Once you've completed your work, you can treat yourself by visiting the Elehouse or our newly redeveloped Forum, which will house a new informal bar and nightclub. This £7 million project space will be new for 2021 and will host social activities and events throughout the week!

Of course it's not just social activities we've invested in; our teaching and learning spaces are among the best in the country.

Recently we've invested in a £12 million Enterprise Hub, which houses our business incubation centre and is a great support network for entrepreneurs. Members also have

access to private meeting rooms and a network of like-minded peers.

On campus there's also our Cyber Security Centre, a Science Building with medical simulation suites, and our replica British Crown Court for law students. Just a few miles away from campus is our Bayfordbury observatory, used by our astronomy and life science students.

Our free shuttle bus will take you between our de Havilland and College Lane campuses, however they are connected by a short walk with pathways and cycle routes if you prefer some fresh air between lectures.

Everything on campus is designed with you in mind to give you the best experience UH has to offer.





*Law Building, de Havilland  
Campus*

# Student Life



---

## Sports

Sport and exercise can not only help you stay in shape, but they can also support your general health and wellbeing.

One of the easiest ways to exercise at the University is to visit the Hertfordshire Sports Village on the de Havilland Campus. The spacious, air-conditioned gym is equipped with a range of resistance and cardio Matrix Fitness machines, along with a large free weights area and multi-use functional training rig – there are so many ways to train! Our fully qualified Health and Fitness team are always on hand to provide expert advice and support.

The gym also houses consultation rooms, two group exercise studios, BodyBalance Physiotherapy, and a Sports Injury Clinic.

Through the Athletic Union, we currently have 28 clubs offering a variety of sports for all abilities. The majority of our sports clubs represent the University by competing in the British Universities & College Sport (BUCS) programme and fixtures. Some clubs will also participate in regional or national competitions outside of BUCS.

---

## Orientation Week

To help you settle into life at the University and start making friends, we run a free Orientation Week. The programme has been designed to familiarise you with all aspects of living and studying in the UK. It'll give you all the advice and information you need to make the most of your time in the country and at the University and there will be fun events throughout the week.

For more pre-arrival information:  
[go.herts.ac.uk/orientation](https://go.herts.ac.uk/orientation)

---

## Clubs & Societies

University isn't just about getting an incredible education; it's also about exploring ideas, trying new things and meeting lifelong friends. At the Students' Union (SU) there's lots to get involved with and plenty of support when you need it.

The Students' Union is the social heart of the University. It runs club and live music nights at the Forum, one of the region's most exciting venues. It also has lots of student-run societies where you can meet people who share your interests – from baking to go karting!

We have hundreds of societies and clubs for you to join while you study at Hertfordshire, you just have to choose which ones most suit your interests!

You can find out more at  
[hertfordshire.su/societies](https://hertfordshire.su/societies)

---

## Covid Safety

The safety, health and wellbeing of our community is our top priority. We have created a Covid-secure campus so you can enjoy university life while keeping safe. Around campus you will see increased cleaning, hand sanitisation stations, screens and 2 metre markers to remind you to follow social distancing. Masks are also required in indoor spaces and PPE is available for courses that require it. These are just some of the changes we have made to keep students safe.

For more information:  
[herts.ac.uk/coronavirus](https://herts.ac.uk/coronavirus)

# Study Areas



*Science Building, College Lane  
Campus*



Here at the University of Hertfordshire we offer over 300 programmes. These programmes are taught over eight different Schools of Study which range from the Hertfordshire Law School, all the way through to Life and Medical Sciences. Our programmes are created with each programme-specific industry in mind, ensuring each course will support you to reach your full potential and achieve your ultimate career goals. Furthermore, a wide range of our programmes are professionally accredited, which will really boost your career once you graduate.

The University has state-of-the-art facilities across all of the Schools of Study, for example our law students are able to undertake mock trials within our full scale replica law court, our engineering students are able to learn in the flight simulator, while our nursing students can practise their skills in the Hertfordshire intensive care and emergency simulation centre.

We are pleased to offer placements alongside many of our undergraduate and postgraduate programmes which provide students with first hand industry experience. Undertaking a placement within your programme is an opportunity to enhance your learning experience and provides you with an upper hand when it is time to apply for graduate jobs.

In addition to this, we have Pre-sessional English courses running before our semesters begin to support applicants who need to boost their UKVI Academic IELTS score ready for their degree.

Also, we have the Hertfordshire International College (HIC) here on campus. They offer students foundation and pre-masters programmes which support academic progression onto undergraduate and postgraduate programmes at the University.

Further details about all of the courses we offer here at the University of Hertfordshire can be found within our Subject Area Guide or on our website at:

**[herts.ac.uk/courses](https://herts.ac.uk/courses)**

# Accommodation

.....

Living on campus is safe, practical and an amazing way to meet new people, while being minutes from your lectures, libraries and entertainment.

Stay in our £120 million student accommodation village where we offer a variety of rooms on campus, including studio rooms and en suites for more privacy, townhouses where you share your kitchen and bathroom with other students, or twin rooms for those on a tighter budget. If you are sharing your kitchen, you will have your own food locker.

All rooms include Wi-Fi and have access to laundry facilities on site.

.....

## When to Apply

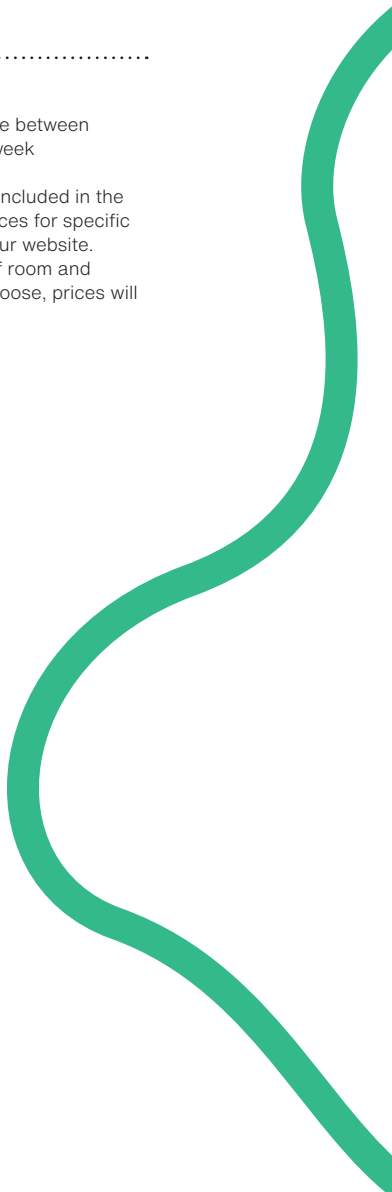
You should apply for accommodation once you have a conditional offer and student ID. This lets the accommodation team know you are interested in living on campus. Once you are at CAS stage, they will allocate you a room.

**[herts.ac.uk/life/student-accommodation](https://herts.ac.uk/life/student-accommodation)**

## Prices

For 2021/22, prices range between £103.25 to £217.07 per week

Utility bills and Wi-Fi are included in the price of our halls. The prices for specific rooms can be found on our website. Depending on the type of room and length of contract you choose, prices will vary.







**Standard bedroom  
(Telford Court,  
College Lane)**

43 Weeks: **£127.75 pw**  
51 Weeks: **£122.92 pw**



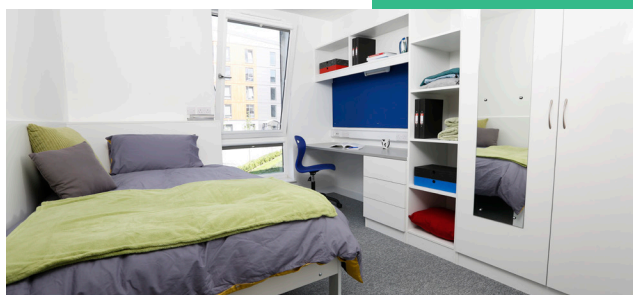
**Studio (College Lane)**

43 Weeks: **£217.07 pw**  
51 Weeks: **£208.81 pw**



**Enhanced (College Lane)**

43 Weeks: **£167.16 pw**  
51 Weeks: **£162.61 pw**



**Townhouse room (College Lane)**

43 Weeks: **£161.14 pw**  
51 Weeks: **£154.98 pw**

# Support on Campus

---

## Graduate and Placement Support

The Careers and Employment Team at the University is committed to supporting the employability of our international students. The team can help you prepare for job applications and also holds a series of job fairs on both campuses throughout the year.

You can discuss your future career goals or placement options with our experienced and professional advisors, who have close links with employers and keep up to date with the latest trends in graduate employability. Many of these placements are with employers who work exclusively with us and specifically want our students.

Placements are an excellent way of complementing your studies to give you hands on experience in a real world setting, which appeals to future employers.

Our graduates get 3 years of job search support, including interview practice and 121 career advisor video calls. You will also get free access to over 9000 LinkedIn Learning courses to further your development.

---

## Multi Faith Space

We welcome students of all religious beliefs and have 2 dedicated areas on campus for relaxing, reflection and practicing faith; The Key and The Multi Faith Space. They are open 7 days a week.

---

## Student Wellbeing and Counselling

Our Student Wellbeing Team is here to support you with any emotional, mental health, disability and health related issues you may experience throughout your time at university.

All of our services are confidential and delivered by trained and experienced staff who take a holistic and multi-disciplinary approach to ensure that you get the best support possible.

Our qualified and experienced counsellors are understanding and offer a non-judgmental ear.

---

## Health Services

Our Hertfordshire Medical Centre is located on campus to ensure you have easy access to health services while studying with us.

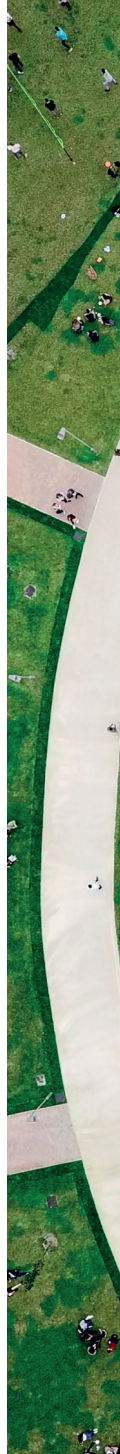
You can register as soon as you know the address of your University accommodation to give you peace of mind that you will be looked after during your time in the UK.

---

## Study Abroad

We are very lucky to have a Study Abroad team who support our undergraduate students to undertake a one year exchange programme at one of our many worldwide partnership institutions from Europe, Asia, North and South America to Australia.

Find out more:  
[herts.ac.uk/life/support-and-wellbeing](https://herts.ac.uk/life/support-and-wellbeing)





The Oval, College Lane  
Campus

# Applying to Hertfordshire

Once you've made the decision to come to the University of Hertfordshire, you should apply as soon as you can to ensure you have plenty of time to prepare to move to the UK.

## **There are two main ways to apply:**

You can apply through one of our approved representatives, or complete an application form on our website:

**[herts.ac.uk/international](https://herts.ac.uk/international)**

With your application form, you'll also need to send us the following:

- An academic reference
- A personal statement outlining why you wish to study in the UK, at Hertfordshire, and why you wish to do the course you've chosen and how this matches your career aspirations
- A scan of your passport photo page
- A scan of all of your academic qualifications
- A scan of your English language qualification

## **You'll need strong English skills to study at University level, so for most courses, we ask for one of the following:**

- GCSE/IGCSE English Language at grade C or above
- IELTS score of 6.0 (with no less than 5.5 in any band) for undergraduate courses, IELTS 6.5 (with no less than 5.5 in any band) for postgraduate courses
- Pearson Test of English 51 (with no less than 42 in any band) for undergraduate courses, 58 (with no less than 42 in any band) for postgraduate courses
- Indian Standard XII English language (65% undergraduate/70% postgraduate)
- Malaysian SPM1119 Advanced English grades 1-6 or A-C
- Nigerian WAEC/NECO C6 (1-6 or A-C)

This isn't a complete list, so please visit [herts.ac.uk/international](https://herts.ac.uk/international) to find out more. You can find out visa and immigration requirements there too.

---

### CAS

We can issue your CAS up to 6 months before the course start date once you have met all the conditions of your offer.

### Immigration and Visa

Most overseas students need a visa/entry clearance to study in the UK. You can self-assess online at the UK Government's Home Office website to see if this is relevant to you.

### \*Sponsorship and Financial Checks

Some students may be required to complete a sponsorship interview and/or financial checks (If this is applicable to your application, you will be informed by the Admissions Team).

**1** Submit application

**2** Receive conditional or unconditional offer

**3** If conditional, submit outstanding documents

**4** Pay tuition fee deposit

**5** Apply for accommodation

**6** Sponsorship interview\*

**7** Financial checks\*

**8** Receive CAS

**9** Apply for Student Visa

**10** Receive visa

**11** Book flight to the UK

**12** Attend orientation week and enrolment

# Scholarships & Fees

---

## **Tuition fees**

Like every other UK university, we charge tuition fees for our courses. These are different for UK and overseas students.

Our standard tuition fees are based on full-time courses taught on campus.

## **Overseas undergraduate fees**

Our fees for courses starting in 2021 are £13,450 per year for all standard courses, both classroom based and laboratory/workshop based.

## **Overseas taught postgraduate fees**

Our tuition fees for courses starting in 2021 are £13,950 per year for all standard courses, both classroom based and laboratory/workshop based.

## **Overseas postgraduate research fees**

Our research tuition fees can be found on our website.

## **Deposit and reduction for paying in full**

You'll be required to pay a £5,000 deposit to secure your place with us. This goes towards your first year tuition fees. If you're able to pay for the whole year in full when you enrol, we'll give you a £500 discount off your tuition fees.

## **International scholarships**

Every year we offer a limited number of scholarships to international students to make studying with us more affordable. Scholarships are available for most of our courses and go towards your first year tuition fees. They are available up to £4,000.

We also offer graduate scholarships for international students who have already taken an undergraduate degree here and now want to take a master's course with us. This is the equivalent of a 20% reduction in your tuition fees.

Find out more at [herts.ac.uk/international/new-international-students/scholarships-and-fees](https://herts.ac.uk/international/new-international-students/scholarships-and-fees)

Hutton Hub, College Lane  
Campus





[international@herts.ac.uk](mailto:international@herts.ac.uk)



[herts.ac.uk/international](https://herts.ac.uk/international)



+44 (0) 115 824 2657



[fb.com/uniofhertsinternational](https://fb.com/uniofhertsinternational)



[@uniofhertsintl](https://@uniofhertsintl)



[@uniofhertsintl](https://@uniofhertsintl)