



**BOND
UNIVERSITY**



2021 STUDY ABROAD

HOW BOND RATES

OVERALL QUALITY OF EDUCATION
TEACHING QUALITY
LEARNER ENGAGEMENT
LEARNING RESOURCES



STUDENT SUPPORT
SKILLS DEVELOPMENT
STUDENT RETENTION
STUDENT TEACHER RATIO

Rating as of the 2020 Good Universities Guide.



Diverse sporting clubs
and activities on campus



Choose from over 2,000 Undergraduate
or Postgraduate subjects



Small class sizes
(10:1 ratio)



Dedicated Study Abroad
& Exchange team



World-class
academics

Located in the centre of campus is the Arch Building. The Arch was designed by famous Japanese Architect, Arata Isozaki, whose main inspiration for the free arch design came from the Triumphal Arch of Constantine in Rome.

WELCOME TO BOND UNIVERSITY'S STUDY ABROAD PROGRAM



Living and studying in another country is life changing.

You will experience Australia's culture at a much deeper level than a short visit allows. You will expand your educational horizons, enhancing the standard curriculum with an international perspective. You will share classes, study sessions, coffee breaks and living quarters with students from all over the world, building a global network of life-long friends, business colleagues and academic mentors.

As Australia's first independent, not-for-profit university, Bond is uniquely suited for international Study Abroad students. From the outset, Bond was designed to have an international focus and our permanent cohort includes students and teachers from more than 90 different countries.

Specifically, our small classes and low student:teacher ratio will help you settle in and make friends quickly, as well as ensuring you get all the support you need with your studies.

Bond is also renowned for its active and inclusive campus life. We have a wide range of student clubs and societies, social and competitive sporting teams, and recreational facilities ranging from restaurants and cafes through to swimming pools and a fully equipped gymnasium that hosts regular fitness classes - all free for our students.

Above all, Bond University - and Australia in general - is a place of tolerance and respect where we celebrate and learn from our different perspectives and lived experience.

I look forward to welcoming you as part of Bond's international family.

Professor Tim Brailsford
Vice Chancellor and President



STUDENT EXPERIENCE

in Australia for **FIFTEEN YEARS IN A ROW**
2021 Good Universities Guide

ABOUT THE GOLD COAST



WEATHER



Spring
September to November
15 - 28°C (59 - 82°F)



Autumn / Fall
March to May
16 - 27°C (61 - 81°F)



Summer
December to February
20 - 31°C (68 - 88°F)



Winter
June to August
9 - 22°C (48 - 72°F)

620,000+

residents

6th

most populous city
in Australia

28%

of population born overseas
2% higher than national average

Coolangatta

Burleigh Beach

Mermaid Beach

Broadbeach

Bond University

86km
BRISBANE

Main Beach

FAMOUS FOR



Theme parks



Entertainment and nightlife



Lush hinterland



Shopping and markets



Hosted the Gold Coast 2018 Commonwealth Games



Music and food festivals



Beautiful wildlife and sealife



Surfing



Hotels and resorts



Waterways and Canals

Surfers Paradise

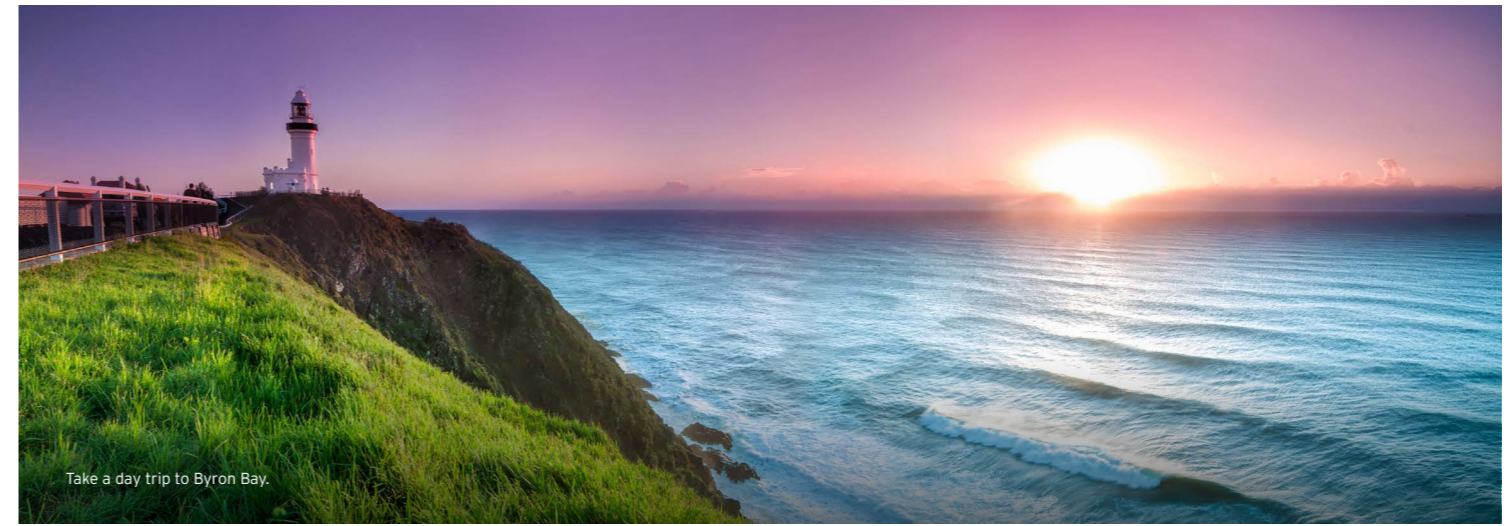
57km
COASTLINE

DISCOVER THE GOLD COAST

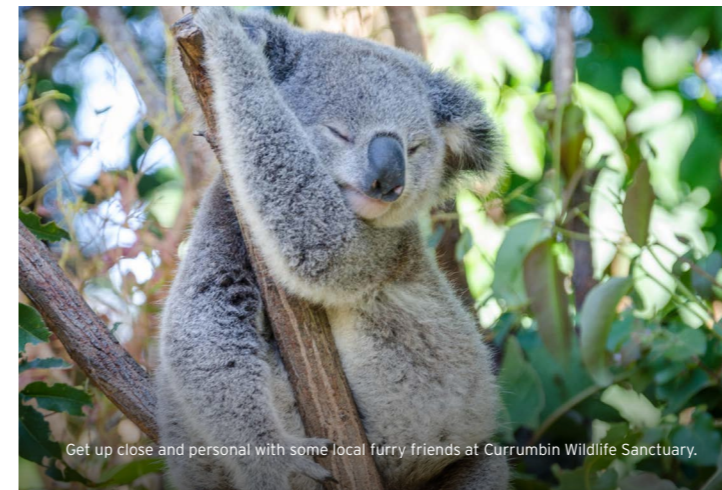
Bond University is located on the Gold Coast - Australia's sixth largest city. International students choose Bond University not only for our quality education, but for the warm climate and the unique mix of natural attractions and sightseeing opportunities right on our doorstep.



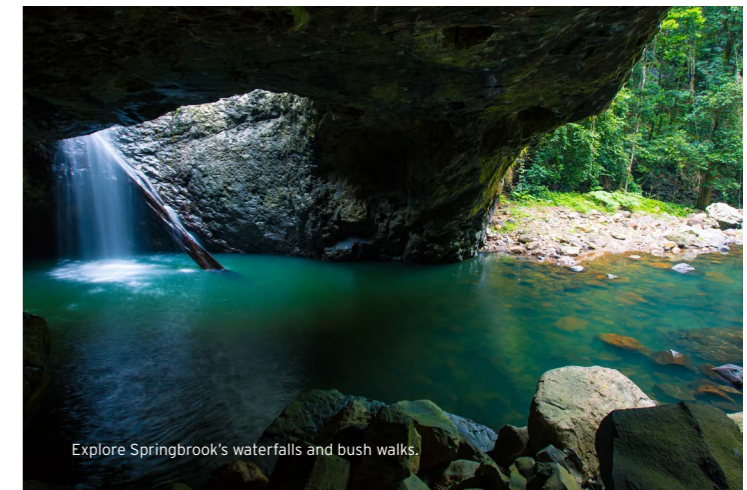
Take a surfing lesson at Currumbin.



Take a day trip to Byron Bay.



Get up close and personal with some local furry friends at Currumbin Wildlife Sanctuary.



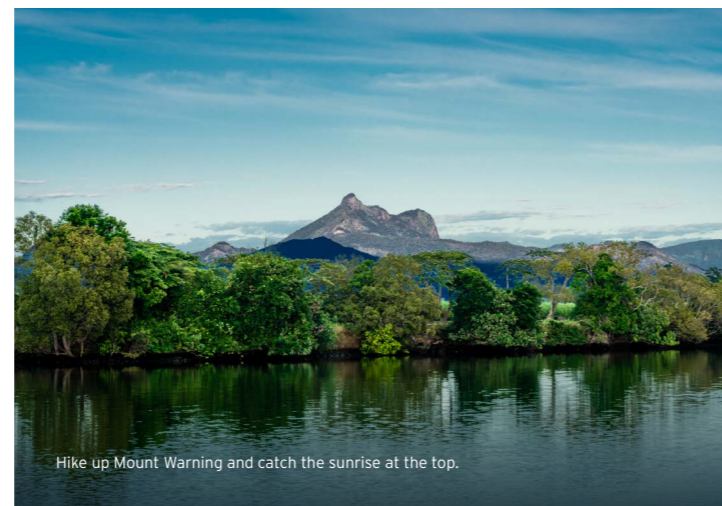
Explore Springbrook's waterfalls and bush walks.



Finish up a week of study by heading out to party at Surfers Paradise and Broadbeach.



Get an adrenaline rush at one of the Gold Coast's theme parks.



Hike up Mount Warning and catch the sunrise at the top.



Shop all of the big brands and international boutiques at the hundreds of stores at Pacific Fair, Harbour Town, or Robina Town Centre.



Enjoy diverse culture and food from around the world at Gold Coast Chinatown and Miami Marketta street food night market.

STUDYING AT BOND

As a study abroad student at Bond University, you will be able to choose subjects (courses) from a range of study areas alongside Australian and other international students.

During your semester, you will be considered as a full-time student requiring you to enrol in three or four subjects. The amount of time spent in class varies, averaging between three or four hours per week per subject. Your classes will be a mix of lectures, tutorials, seminars and labs. Postgraduate students may have the option to choose "intensive-mode" subjects, which are delivered across three or four days, twice during the semester.

Under the Bond system, a standard subject is worth 10 credit points. This generally equates to three or four credits in the US system or 7.5 in the European Credit Transfer System (ECTS). Please note that the grading scale at Bond University will be different to your home university.

PLANNING YOUR SUBJECTS

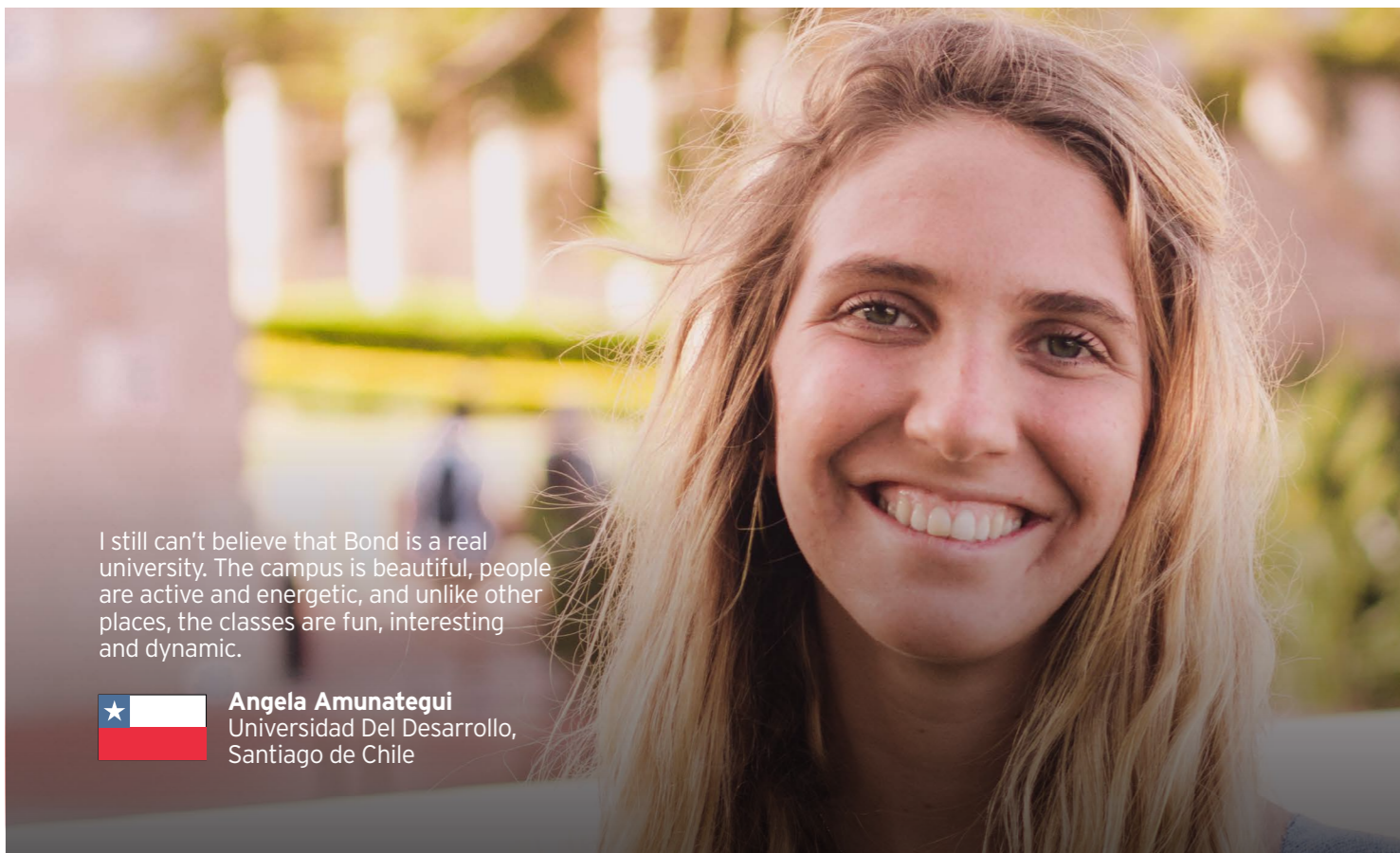
Visit Bond's subject search page at apps.bond.edu.au/subjects to search our subjects by name, code, study area, and semester offered. You have the option to 'Display only Study Abroad subjects'. Each subject will have a brief description, prerequisite requirements or assumed knowledge (if applicable) and a subject outline to help your home university determine if you are able to receive credit for the Bond subject.

At Bond University, we offer a number of specialised study abroad subject packages that can complement your degree while studying abroad. For more information and related study areas visit our Study Abroad Packages bond.edu.au/study-abroad-packages.

2021 SEMESTER DATES

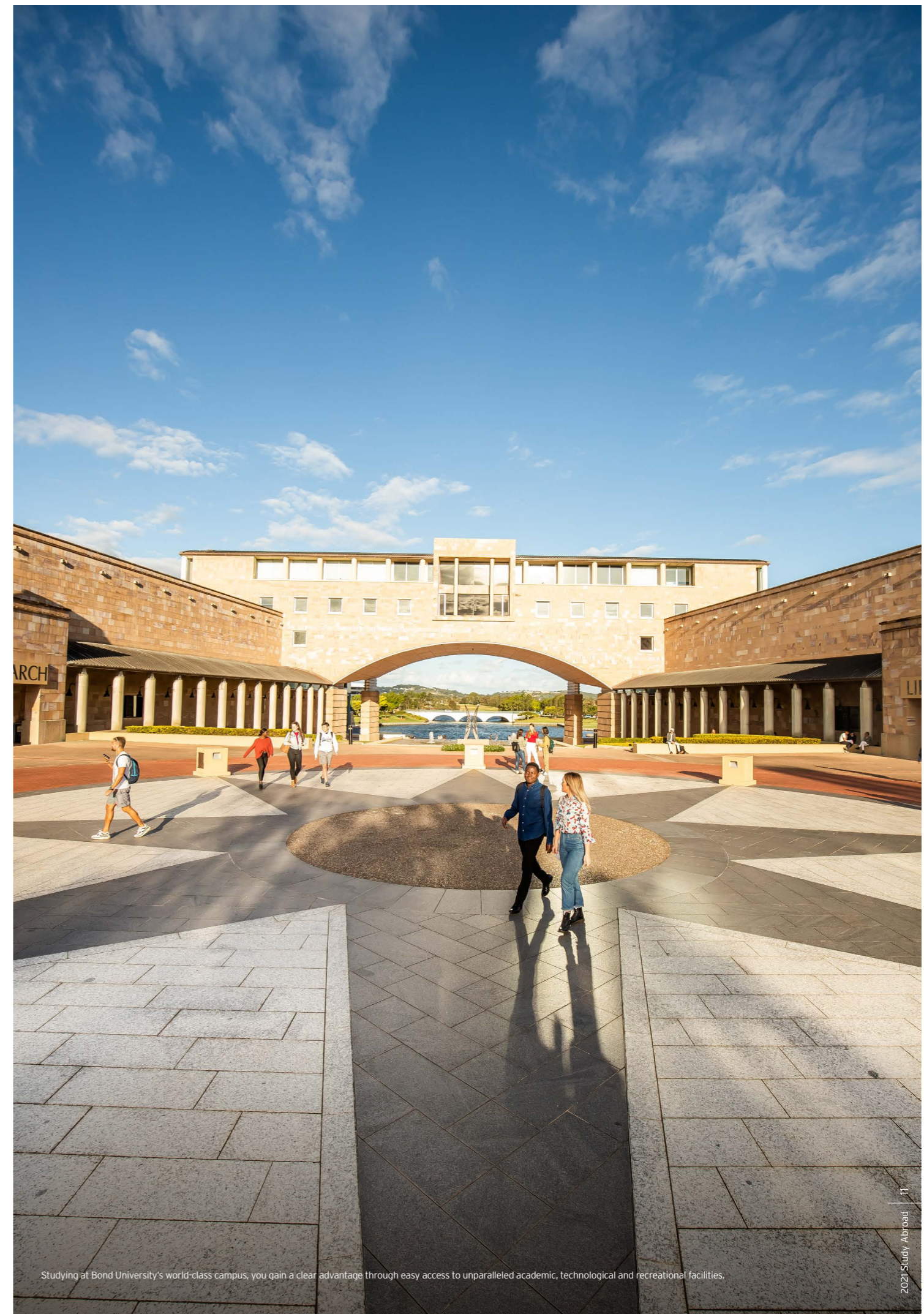
Bond is one of the few universities in Australia that operates on a trimester system, with starting dates in January, May and September. Our semesters align with the Northern Hemisphere's academic calendar, allowing a smooth transition from your home institution to your Study Abroad semester at Bond. To maximise study time, a lot of our Northern Hemisphere students choose to spend their summer at Bond, during our May semester.

EVENT / ACTIVITY	SEMESTER 1	SEMESTER 2	SEMESTER 3
Orientation	13 January	12 May	8 September
Classes commence	18 January	17 May	13 September
Semester ends	24 April	21 August	18 December



I still can't believe that Bond is a real university. The campus is beautiful, people are active and energetic, and unlike other places, the classes are fun, interesting and dynamic.

 **Angela Amunátegui**
Universidad Del Desarrollo,
Santiago de Chile



Studying at Bond University's world-class campus, you gain a clear advantage through easy access to unparalleled academic, technological and recreational facilities.

ACADEMIC STUDY AREAS

As a Bond Study Abroad student, you have access to subjects from all of Bond study areas. You will enrol in 3-4 subjects (approximately 12 USA credits or 30 ECTS) to fulfill your home university requirements.

A variety of individual subjects and study package options are available in the following study areas:

- Accounting
- Actuarial Science
- Advertising
- Architecture
- Australian Government and Politics
- Australian Studies
- Behaviour Management
- Big Data
- Biomedical Sciences
- Business
- Cinema Journalism
- Commerce
- Communication and Society
- Contemporary Issues in Law and Society
- Corporate Communication
- Corporate Story Telling
- Counselling
- Creative Arts
- Creative Writing
- Criminology
- Cultural Studies
- Digital Media
- Economics
- English Literature
- Entrepreneurship and Innovation
- Environmental Management
- Esports
- Exercise Science
- Film and Television Studies
- Finance
- Global Studies
- Health Management
- Hotel Management
- Humanities
- Human Resource Management
- International Business
- International Relations
- International Diplomacy and Global Governance
- Journalism
- Languages (Chinese, French, Japanese, Spanish)
- Law (Animal, Business, Environmental, Family, International, Mediation, Media and Communications, Sports Management)
- Legal, Government and Crime Studies
- Management
- Marketing
- Marketing Communication
- Media
- Multimedia Design
- Negotiation
- Nutrition and Health
- Occupational Therapy
- Philosophy
- Photography
- Political Science
- Property
- Psychology
- Public Relations
- Screen and Creative Media
- Social Media
- Statistics
- Sport Management
- Sport Science
- Sustainable Development
- Sustainable Environment and Planning
- Tourism Management


To see the range of subjects and semester availabilities, go to apps.bond.edu.au/subjects. Select 'Display only Study Abroad subjects' to bring up a full list of subjects and to see the description, prerequisites or assumed knowledge (if applicable) and a subject outline.

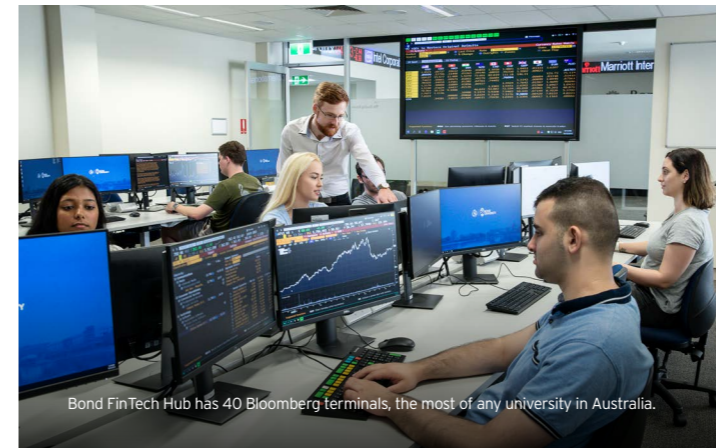


The recent expansion of the Health Sciences & Medicine building houses state-of-the-art facilities including laboratories equipped with the latest technologies.

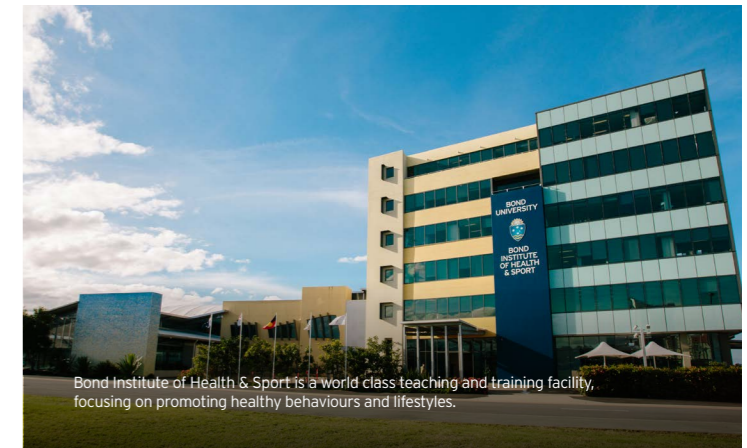


A semester abroad at Bond is a unique journey that gives you the chance to grow both academically and personally while being surrounded by incredibly great and inspiring people.

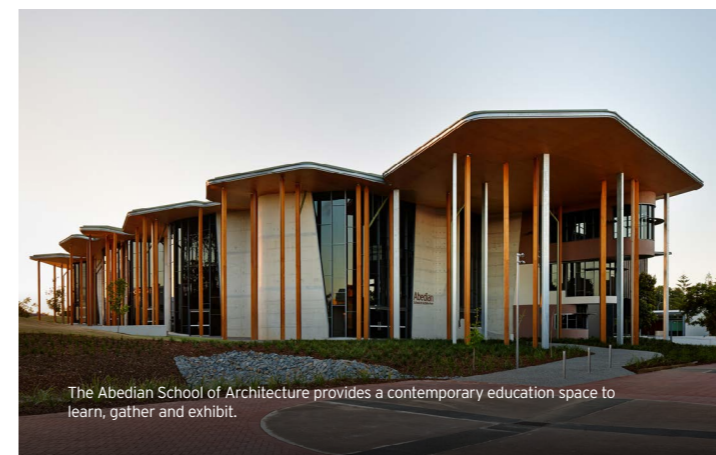
 **Gitta Neuhaus-Gallade**
Witten / Herdecke University,
Germany



Bond FinTech Hub has 40 Bloomberg terminals, the most of any university in Australia.



Bond Institute of Health & Sport is a world class teaching and training facility, focusing on promoting healthy behaviours and lifestyles.



The Abedian School of Architecture provides a contemporary education space to learn, gather and exhibit.



Law moot courts replicate latest technology used in the courts of Australia.

STUDENT LIFE AT BOND

Bond University's student life is vibrant and full of social activities year round. The Bond University Student Association (BUSA) oversees all sporting, cultural and special interest clubs on campus and ensures that students have a say in university administration issues. All students are required to have a Student Activities Membership (SAM) which provides access to all student organisations and activities. It also includes access to all sporting facilities and a gym membership.

STUDENT EVENTS

- Annual Bond Sports Award Dinner
- Australian University Games
- Bondstock Week (September semester)
- Club Sign On Day
- Global Food Festival

SPORTING CLUBS AND EVENTS

BUSA hosts numerous events throughout the year for sports fanatics, including Melbourne Cup and Ladies Day. There are also several social events held as part of Orientation each semester including a visit to North Burleigh beach, trivia night, trip to Movie World, club sign on day and ten pin bowling.

Sporting clubs operating on campus include:

- Athletics
- Australian Football League
- Badminton
- Baseball
- Basketball
- Cheerleading
- Cricket
- Dance
- Equestrian

- Faculty student association parties
- Thursday Nights tavern, with live bands and DJ's
- Universal Traveller
- Wednesday by the Water with free BBQ lunch
- Weekly Res Calendar social and activities for on-campus students

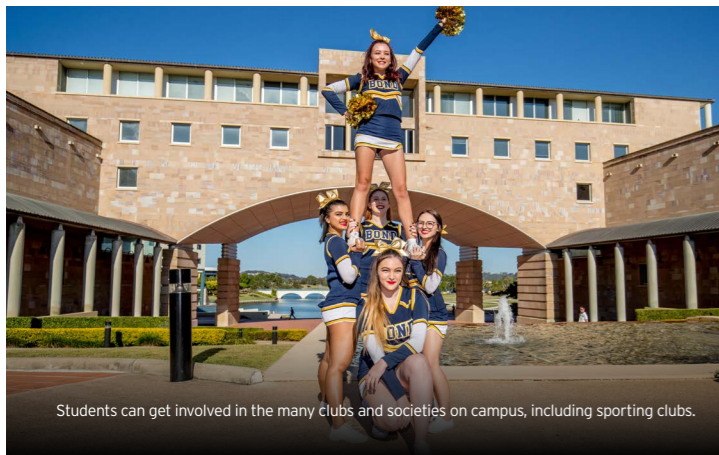
- Golf
- Hockey
- Judo
- Mixed martial arts
- Netball
- Rowing
- Rugby union
- Running
- SCUBA
- Soccer
- Squash
- Surfing
- Swimming
- Tennis
- Touch football
- Volleyball
- Water polo

SPECIAL INTEREST CLUBS AND SOCIETIES

You can meet like-minded friends by signing up for active social and cultural clubs which include some of the following:

- Bond Music
- Bond Sikh Students
- Bond Tourism Enthusiasts Club
- Accounting
- Chinese Students Association
- Community Outreach Group
- Critical Care Interest Group
- Crochet Group
- Defence Club
- Dungeons and Dragons Club
- Fishing and Anglers Club
- Food Association
- Gaming Society
- Indian Association
- Journalism Student Society
- Labor
- Lankan Society
- Liberal National Club
- Malaysian Association
- Muslim Student Association
- Paediatrics Club
- Physicians' Society
- Psychiatry Association
- Snow Sports Club
- Society of Health for Indigenous & Rural Experience
- Surgical Society
- United Nations Student Association
- Vietnamese Student Association
- Bond Yoga Club
- Canadian Law Students' Association
- Catholic Students Association
- General Practitioners Student Network
- Hong Kong and Taiwanese Student Association
- Hotel and Tourism Students' Association
- Jewish Student Association
- Law Link
- Making a Difference
- Medical Students' Society of Bond University
- Mentally Healthy Bond
- Omani Bondies
- Postgraduate Students' Association
- Student Society for Indigenous Awareness

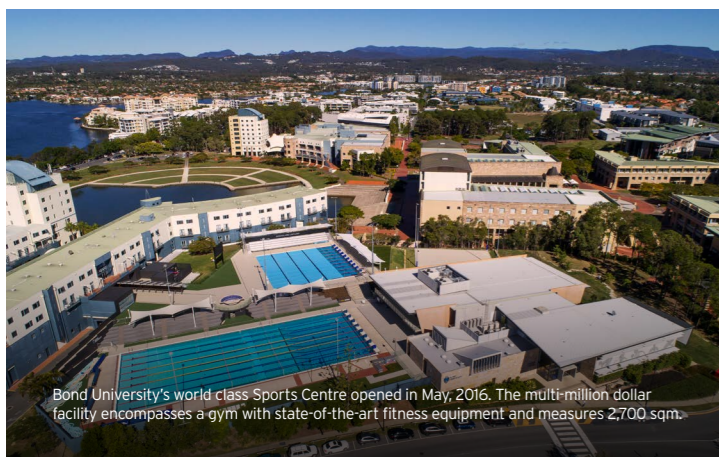
Clubs and Societies may change from year to year. For more information about BUSA, campus clubs, events and activities, visit the Bond Student page at bond.edu.au/busa.



Students can get involved in the many clubs and societies on campus, including sporting clubs.



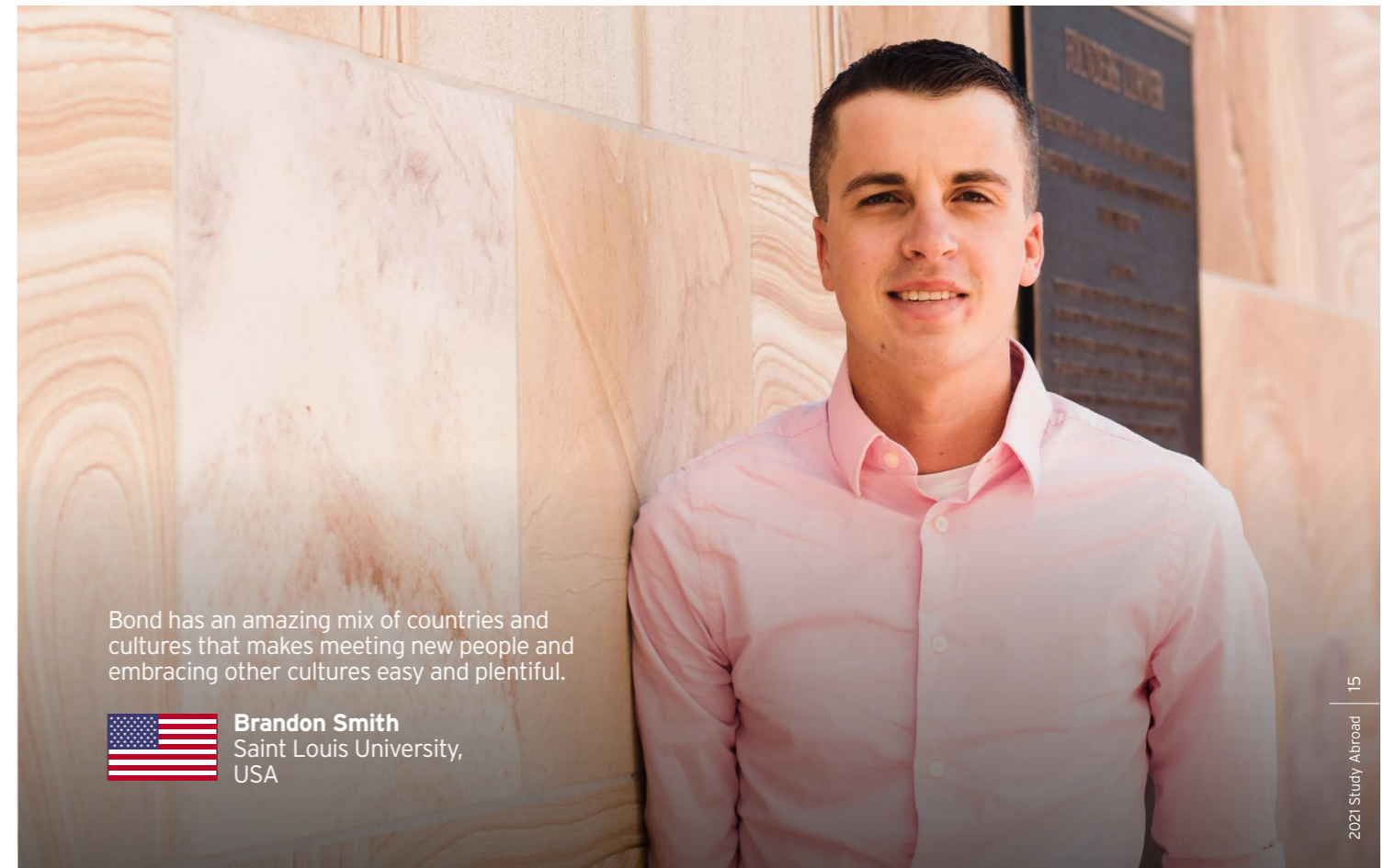
Club Sign On Day.




Bond University's world class Sports Centre opened in May, 2016. The multi-million dollar facility encompasses a gym with state-of-the-art fitness equipment and measures 2,700 sqm.



Bond's sporting teams play under the Bond Bull Sharks banner and are a great way to make friends and stay active.



Bond has an amazing mix of countries and cultures that makes meeting new people and embracing other cultures easy and plentiful.

 **Brandon Smith**
Saint Louis University,
USA

STUDENT SUPPORT SERVICES

The personalised attention you receive in the classroom extends to every aspect of life at Bond. We encourage all of our students to take advantage of the support services available on campus.

CAREER DEVELOPMENT CENTRE

Our on-campus Career Development Centre offers assistance in career planning, resume and application review, interview preparation, and guidance for students wishing to undertake part-time work during their semester abroad. Bond's new Employability Lab initiative gives students the opportunity to gain industry experience throughout their studies. With the flexibility to complete short-term, long-term and semester break placements, the Employability Lab equips students with practical experience, based in a supportive environment as part of a live case study hosted on campus.

COMPUTING SUPPORT

At the Information Services Desk, our IT experts provide support for all University-owned equipment, as well as helping you connect your own computer to the university network.

COUNSELLING SERVICES

Our psychologists provide a free, confidential counselling service to help you address any problems, whether they be related to study or personal issues.

DISABILITY SUPPORT

Students with a disability, illness, injury, health or medical condition are encouraged to contact the Disability Officer to inform them of any specific requirements and to find out about the services available.

INTERNATIONAL STUDENT SUPPORT SERVICES

Our International Student Support team can help you with questions relating to overseas health cover, visas and financial aid.

LGBTIQ SERVICES AND SUPPORT

Bond genuinely treats all students with the same level of consideration, empathy and duty of care including those who may be lesbian, gay, bisexual, transgender, intersex, queer or questioning (LGBTIQ). We strive to provide a learning environment that is safe and supportive and we actively encourage all students to understand and respect individuality and diversity.

MEDICAL CLINIC

Our on-campus Medical Clinic provides general medical treatment, advice, testing, referrals, immunisations and vaccinations. Bulk billing is available for OSHC Worldcare insurance holders.

ORIENTATION

A range of orientation activities are provided to help you settle in to university life and meet other students. Orientation also includes day visits to surrounding areas, as well as other welcoming activities arranged by Bond University and the Bond University Student Association (BUSA). For more information visit bond.edu.au/orientation-week.

STUDENT BUSINESS CENTRE

The Student Business Centre can help with anything relating to academic transcripts, enrolment, timetabling and examinations.

STUDENT LEARNING SUPPORT

Student Learning Support assists students who need help improving their academic skills and English language ability. Staff can help you understand what to write, how to structure essays and offer guidance on grammar, punctuation, sentence structure and referencing.

For more information on the full range of student support services as well as contact details, visit bond.edu.au/student-support.

STUDY ABROAD AND EXCHANGE TEAM

Bond has staff exclusively dedicated to Study Abroad and Exchange students from submitting your application, during your semester, and through to the completion of your semester.

RESPECT.NOW.ALWAYS.

Safety and respect are central to our university's culture. It starts with Safety. Respect. Care. Consent.

Bond University and the Bond University Student Association (BUSA) are jointly committed to a healthy culture of respect and responsibility that provides for a safe and supportive campus for everyone. Bond University has a zero-tolerance approach to sexual assault, harassment and violence. The Student Support Strategy outlines what Bond University has actioned and what actions are being pursued to ensure the safety of every student.

Bond has specialist staff trained in responding to serious incidents and providing the appropriate support and privacy to victims of harassment and cooperates with Queensland Police by assisting with enquiries and investigations.

CAMPUS SECURITY

Bond has safety and security officers patrolling campus 24 / 7.

RESPONSE TO SEXUAL MISCONDUCT

Bond University takes very seriously its responsibility to protect students and staff from sexual assault, interpersonal and sexual harassment and violence.



Orientation is a great opportunity to meet other students and get to know the university.



I would definitely recommend Bond to students living in Japan. Surrounded by a supportive community, Japanese students would feel very comfortable in this learning environment.



Rena Temma
Hosei University,
Tokyo, Japan

ACCOMMODATION AND DINING

ON CAMPUS ACCOMMODATION

Living on campus adds a new dimension to your university experience as you socialise with fellow students from all over the world. Residence halls are within easy walking distance of lecture theatres, libraries and academic facilities, food outlets and the Sports Centre.

Choose from the following options:

- Premium share
- Single room - ensuite
- Single room - premium ensuite
- Single room - share bathroom
- Standard share / twin

All on-campus rooms are air-conditioned and serviced weekly. They include all necessary furniture: king single beds, chest of drawers, bedside tables, wardrobe and bookshelves. Wi-Fi and wired internet access to the university network is also included. Shared laundry facilities with washing machines and dryers are free to use and convenient to all rooms.

OFF CAMPUS ACCOMMODATION

If you prefer to live off campus, we can connect you to resources to find houses or apartments close to the campus. The options vary in price, size, location and the number of bedrooms. Varsity Lakes and Robina are the closest suburbs to Bond University. There are also plenty of close options near the beach including Burleigh, Miami, Nobby Beach, Mermaid Beach or Broadbeach and are linked by public transport. Living close to public transport is important if you do not have a car.

RESIDENT STUDENTS' SUPPORT

Students living on campus have access to a variety of support staff including staff and student resident fellows who live in residences for issues related to life on campus.

DINING PLANS

Offering the convenience of meals, drinks and snacks all day, Bond's flexible dining plans can be used at any Bond operated food and beverage outlet on campus and caters for most special dietary requirements. On-campus residents must purchase a dining plan each semester in conjunction with their accommodation. Students living off campus are also welcome to take advantage of Bond's flexible and affordable dining plans.

FOOD OUTLETS

- Bond Express Convenience Store
- Coffee Cart at Palm Cove
- Don's Tavern
- Food @ Bond room delivery service
- Lakeside (main dining option)
- Papyrus Café (Library Café)
- Pulse Café
- University Club restaurant

More information and rates are available by visiting bond.edu.au/accommodation.

TRANSPORT

AIRPORTS

The Gold Coast is serviced by three airports: the Gold Coast Airport and the Brisbane Domestic and International Airports. Brisbane Airport is accessible by train, bus, taxi and car. The Gold Coast Airport is accessible by bus, taxi and car.

RIDESHARE

Several rideshare services are available on the Gold Coast including Uber, Ola and DiDi which can be accessed through downloading their relevant apps.

TRAINS

Varsity Lakes Train Station is a five minute taxi ride or 10 minute bus ride from Bond's campus. View timetables at the TransLink website: translink.com.au.

BUSES

The Gold Coast provides many quality bus services including a frequent bus service connecting Bond to theme parks, shopping centres and rail links. View timetables at the TransLink website.

Study Abroad students are eligible for a discounted student 'Go Card'. This is an electronic ticket system that allows access to all Gold Coast and Brisbane public transportation including buses, trains, and trams. For more information on how to purchase your Go Card, visit the TransLink website.

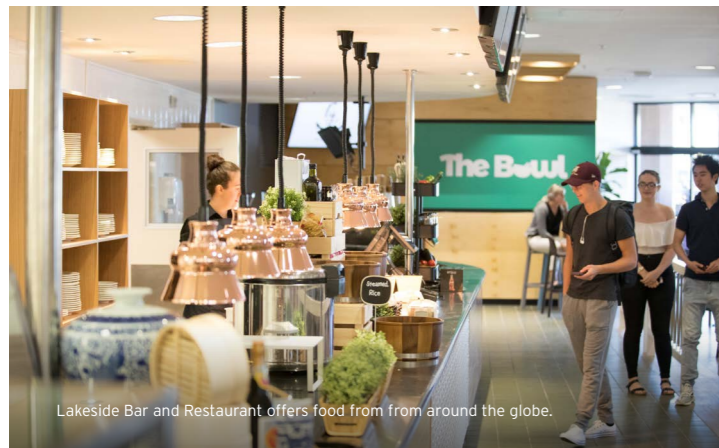
TAXIS

The Gold Coast region is serviced by Gold Coast Cabs. Visit gccabs.com.au for more information and to download the app.

 Gold Coast to Brisbane 1 hour

 Gold Coast to Brisbane 1 hour 10 mins

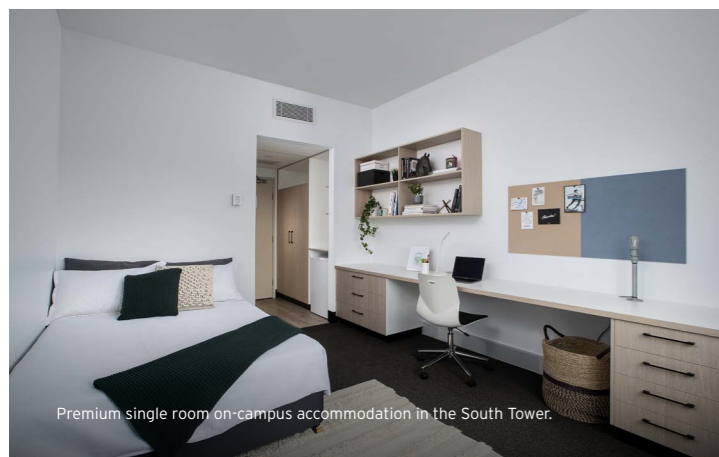
	Gold Coast to Adelaide	2 hours 45 mins
	Gold Coast to Canberra	1 hour 40 mins
	Gold Coast to Melbourne	2 hours 20 mins
	Gold Coast to Sydney	1 hour 30 mins
	Brisbane to Darwin	4 hours 10 mins
	Brisbane to Hobart	2 hours 45 mins
	Brisbane to Perth	5 hours 40 mins
	Gold Coast to Auckland, NZ	2 hours 55 mins



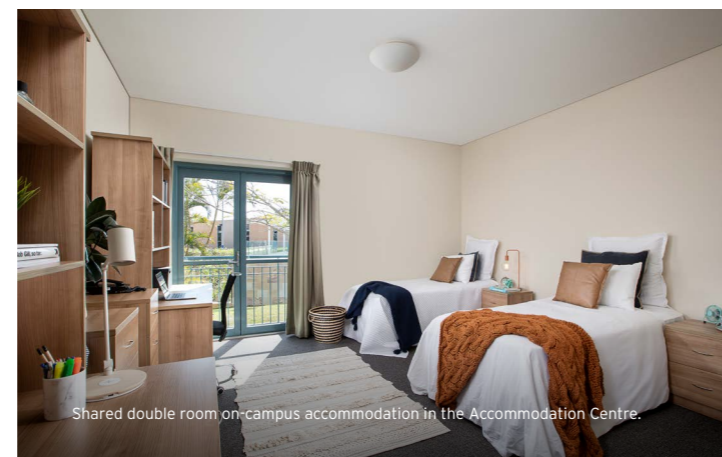
Lakeside Bar and Restaurant offers food from from around the globe.



Visit Pulse Café for coffee, pastries and a variety of lunch snacks.



Premium single room on-campus accommodation in the South Tower.



Shared double room on-campus accommodation in the Accommodation Centre.



Public transport options including buses, trams and trains are available to easily get around the Gold Coast.

FEES, VISAS AND HEALTH COVER

TUITION FEES AND LIVING EXPENSES IN AUSTRALIA

Tuition and other compulsory fees are outlined in the table below. All students coming to Bond on a student visa are also required to have Overseas Student Health Cover (OSHC).

Compulsory one semester fees	
2021 Tuition ¹	AUD\$12,940 / semester
OSHC (student health insurance) ²	AUD\$249 / semester
Student Activities Membership (SAM) fee ²	AUD\$102 / semester
You are advised to budget between AUD\$200 - \$500 semester for books.	

Living expenses to consider for a 15 week study abroad semester are outlined below. All prices are in Australian Dollars (AUD). Please consider the exchange rate to your overseas currency.

	On-campus accommodation	Off-campus accommodation	Homestay
Rent	\$165 - \$570	\$165 - \$440	\$255 - \$275
Food	\$134 - \$166 dining plan ³	\$80 - \$280	Included
Electricity, gas, water	Included	\$20 - \$50	Included
Transport	N/A (on campus)	\$15 - \$55	\$20 - \$40
Mobile phone	\$5 - \$10	\$5 - \$10	\$5 - \$10
Entertainment	\$30 - \$100	\$30 - \$100	\$30 - \$100
Total cost per week	\$334 - \$846	\$315 - \$935	\$310 - \$425
Total cost per semester	\$4,676 - \$11,844	\$4,410 - \$13,090	\$4,340 - \$5,950

ENTRY INTO AUSTRALIA

If you intend to travel overseas to study in Australia, you will be required to obtain a student visa.

Please ensure you allow plenty of time to get your student visa before your studies commence. You will also be required to pay a visa application fee which is charged by the Australian Department of Home Affairs. Students are advised to have received visa approvals before booking overseas flights.

For more information about visas, please visit homeaffairs.gov.au.

OVERSEAS STUDENT HEALTH COVER (OSHC)

To meet the terms and conditions of your student visa, students from most countries will be required to have and maintain OSHC for the entire duration of your stay in Australia.

OSHC gives you access to out-of-hospital and in-hospital medical services to help you maintain your health and in cases of emergencies. Your Letter of Offer will detail the OSHC fees you are required to pay. For more information, please visit bupa.com.au.

¹ Prices are subject to change for 2022 onward as details have not been released.
² Prices are subject to change for 2021 onward as details have not been released.
³ On campus rates are based on a base tier dining package. Additional tiers of dining packages may be available.

ACADEMIC ENTRY REQUIREMENTS

UNDERGRADUATE

Successful completion of two semesters of full time study at a recognised higher education institution with a minimum cumulative GPA of 2.5 out of 4.0 or minimum average result of 65%. Academic entry requirements vary by country.

American students	Minimum cumulative GPA of 2.5
European students	Minimum of a C grade in European Credit Transfer System (ECTS)
Other international students	Please contact us for further advice
High school leavers and graduates ¹	May be eligible and are required to provide their High School Certificate (or equivalent)

POSTGRADUATE

Successful completion of a Bachelor Degree or equivalent

Postgraduate students applying for the study abroad program can study up to a maximum of two semesters. Please check with your home institution's International Office to ensure you meet any other requirements.

Under the Bond system, a standard subject is worth 10 credit points. This generally equates to 7.5 in the European Credit Transfer System (ECTS) or 3-4 credits in the American grading system².

ENGLISH (EAP) + STUDY ABROAD OPTION

If you do not meet Bond's English Language entry requirements you can receive a packaged offer to study English at Bond before starting your study abroad semester.

¹ Scandinavia and Germany only
² This information should only be used as a guide. Each home institution has the right to translate credits as they deem appropriate so it is important to speak with them before departing to confirm how many credits you will receive for your studies here. Note: Grade conversions are based on a standard institution. Bond does not recognise pass conceded.

Download the **BOND NOW** app today!

Search **"BOND NOW"**

Available on the iPhone **App Store** **Google play**

HOW TO APPLY TO STUDY ABROAD

1 OBTAIN APPROVAL FROM YOUR HOME INSTITUTION TO STUDY ABROAD

2 APPLY FOR BOND'S STUDY ABROAD PROGRAM

Applications are recommended to be received three months prior to the start of the relevant semester. For more information on how to apply, visit bond.edu.au/apply. Make sure you include the following with your online application:

- Original academic transcript
- Passport
- Proof of English skills

You must satisfy the individual English language requirements for the approved subjects. For more information on English language requirements, go to bond.edu.au/english-requirements.

3 RECEIVE YOUR LETTER OF OFFER

Successful applicants will receive an official "Letter of Offer" to the university's Study Abroad Program.

4 ACCEPT YOUR OFFER

Accept your offer through the Bond Application portal and pay the fees required.

5 RECEIVE A COE AND APPLY FOR A STUDENT VISA

Accept your offer to study abroad via the application portal and pay any required fees in order to be issued your Confirmation of Enrolment (CoE).

6 ENROL IN YOUR CLASSES BEFORE DEPARTURE

You will receive information regarding subject enrolment and orientation approximately two months prior to Orientation.

7 ORGANISE YOUR ACCOMMODATION

You will receive information regarding on and off campus accommodation approximately two months prior to Orientation.

8 PREPARE TO GO

Pack your bags, and get ready for the best four months of your life!



Study Abroad and Exchange Office
Bond International
Gold Coast Queensland 4229
Australia

Phone: +61 7 5595 1024
Email: studyabroad@bond.edu.au

bond.edu.au



CRICOS Provider Code 00017B

The information published in this document is correct at the time of printing (September 2020). However, all programs are subject to review by the Academic Senate of the University and the University reserves the right to change its program offerings and subjects without notice. The information published in this document is intended as a guide and persons considering an offer of enrolment should contact the relevant Faculty or Institute to see if any changes have been made before deciding to accept their offer.

