



UNIVERSITY OF LEEDS



LEEDS INTERNATIONAL STUDY CENTRE

FOR PROGRESSION TO THE UNIVERSITY OF LEEDS

DELIVERED BY



The Leeds International Study Centre works in collaboration with the University of Leeds and Leeds Beckett University to prepare students from outside the UK for successful degree study.





“I am proud to welcome you as you prepare to start your academic journey in the UK – this is the beginning of some of the most exciting and unforgettable years of your life.

At the Leeds International Study Centre, based on the campus of Leeds Beckett University, you will be supported by expert teachers and staff, so that you can develop the confidence and the skills you need to thrive at the University of Leeds, and beyond.”

Claire Heke

Head of Centre, Leeds International Study Centre



“Thank you for choosing Leeds as your future study destination.

On successful completion of your International Study Centre programme, you will transfer to the University of Leeds campus where I look forward to welcoming you and celebrating your successful progression to degree study.”

Anne Lawrence

**Director, International Pathway Programmes
University of Leeds**

Contents

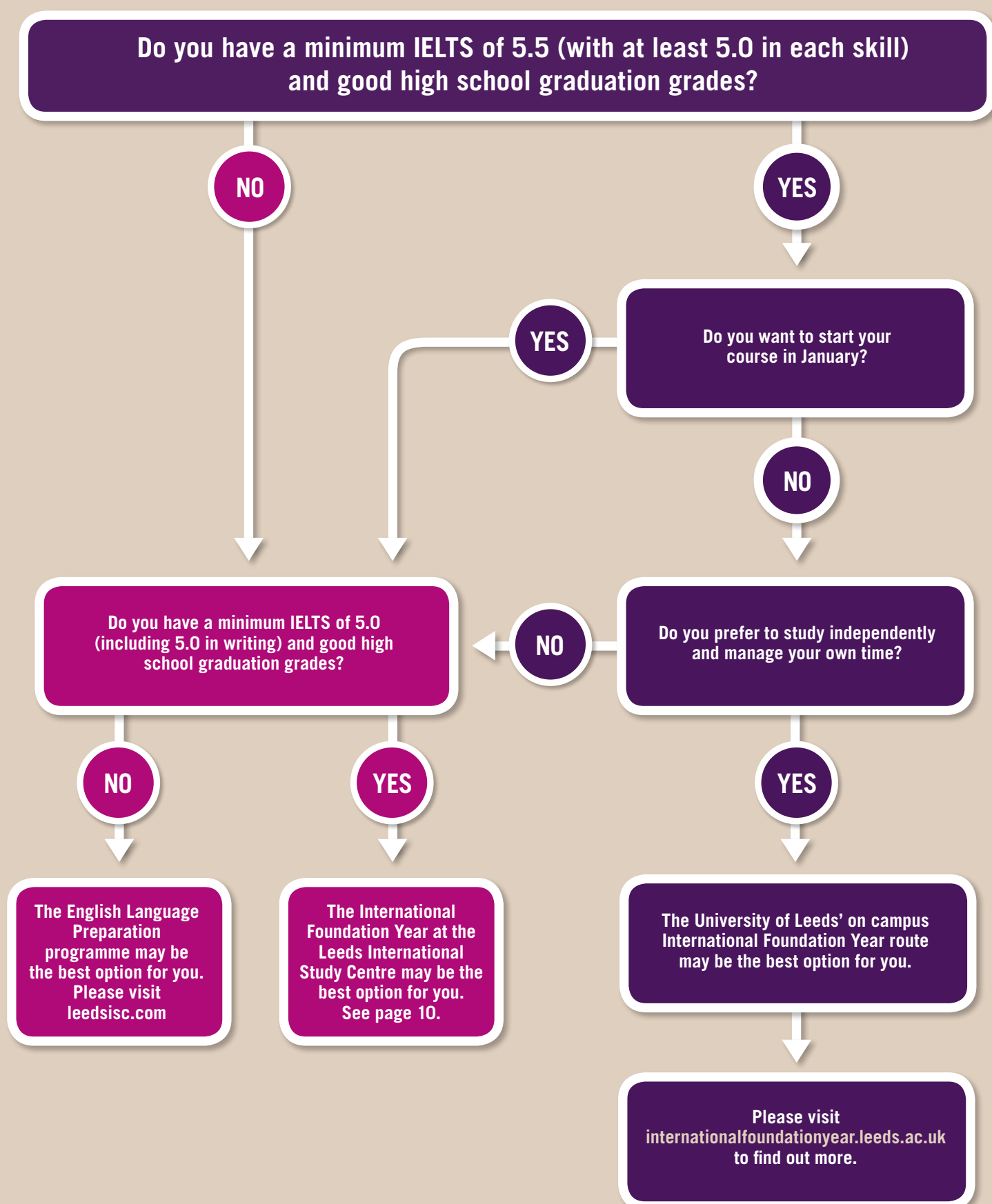
Find the right foundation programme	4
Find the best place to prepare for university	6
The Leeds International Study Centre	8
International Foundation Year	10
Business, Law and Social Studies	12
Science, Engineering and Computing	16
International Year One	20
International Relations	22
Biological Sciences	24
Come and find your place	26
Find new discoveries	30
Find modern facilities	32
Find new interests	34
Find a city full of life	36
Find your new home	38
Find your way to us	40
How to apply	42



FIND THE RIGHT FOUNDATION PROGRAMME

Choose to study either at the Leeds International Study Centre on courses delivered by Study Group or select the University of Leeds International Foundation Year delivered on campus by the University of Leeds. **Which pathway is right for you?**

EXPLORE THE OPTIONS BELOW TO FIND THE ONE THAT MEETS YOUR NEEDS



FIND THE BEST PLACE TO PREPARE FOR UNIVERSITY

At the Leeds International Study Centre, you will learn alongside other **ambitious international students** who are getting ready to study a degree at the University of Leeds or Leeds Beckett University.

The International Study Centre is a great choice for you if you do not meet the entry requirements to apply directly to study at the University of Leeds, or you would benefit from extra support and guidance.

We offer the following programmes:

International Foundation Year:

- Business, Law and Social Studies
- Science, Engineering and Computing

International Year One:

(equivalent to the first year of an undergraduate degree)

- International Relations
- Biological Sciences



WHAT THE LEEDS INTERNATIONAL STUDY CENTRE GIVES YOU

At the Leeds International Study Centre, you will gain the **academic knowledge**, **language skills** and **confidence** you need to prepare for success at the University of Leeds, and beyond.



University-style learning

During your time at the International Study Centre, you will experience lectures, seminars and tutorials so that you know exactly what to expect when you progress to your degree at the University of Leeds. You will also work with your tutor to complete a self-study project, where you will research, evaluate and present information like a university student.

Small class sizes

You will learn in small classes which means you will get individual attention from teachers, and be able to ask all the questions you want to.

Expert teachers

Our teachers are experts in preparing international students for university study. You will learn from highly qualified teaching staff whilst studying at the Leeds International Study Centre.

Exciting modules

Both International Foundation Year courses at the Leeds International Study Centre and our International Year One courses include subject modules that will expand your knowledge in your chosen field.

CareerAhead

The Leeds International Study Centre starts your university life with a focus on employability. This includes teaching the soft skills necessary to succeed in your career. This will continue during your degree programme, and you will graduate with a CV and personal development plan, ready for employment.

Support when you need it

Our teachers and staff will make sure that you feel safe and comfortable from the moment you arrive in Leeds. If you have any questions about your studies, accommodation, or your life in the UK, you can talk to us whenever you need to.

Opportunity to progress

Once you successfully complete the International Foundation Year or International Year One course, and achieve the required progression criteria, you will have the opportunity to go on to study at the University of Leeds.

Great location and facilities

Leeds International Study Centre is located at the Headingley Carnegie Stand, part of Leeds Beckett University. The modern premises provide an outstanding learning and teaching environment for students. Other benefits include:

- **Cutting-edge learning** and social spaces with modern technology.
- A café where you can study, enjoy **quality food** and **relax** with friends.
- **Located 10-15 minutes'** walk from Leeds Beckett University's Headingley Campus.
- **Excellent transport links** with the rest of the city, so you can easily get to your accommodation, or the city centre by bus or taxi.

During your International Foundation Year or International Year One, you will have access to a range of fantastic facilities at Leeds Beckett University. These include the libraries, which are open 24/7, every day of the year, the online library with access to ebooks, Information, Media and Technology Services and access to the networked PC labs.

What you will gain

- Support and guidance to speak, read and write in English
- The ability to research, write and present information in academic English
- Confidence to become independent and successful
- Experience of living and learning in the exciting city of Leeds
- New friends from all around the world



INTERNATIONAL FOUNDATION YEAR

The International Foundation Year is a two-term pathway taught at the Leeds International Study Centre. Here you will focus on academic subjects, study skills and English language training. Once you successfully complete this course, you can progress to undergraduate degree study at the University of Leeds.

Why the International Foundation Year?

This course aims to fully prepare you for the challenges of degree study and helps you to develop the skills and knowledge you need to succeed at university and beyond.

What you will learn

You will study a combination of core and subject-specific modules that focus on teaching you the English language, study skills and academic areas most relevant to the degree you plan on studying at the University.

Your assessment

Teachers will monitor your progress closely, ensuring you are on track with your studies. You will take part in exams, group projects, presentations and essays as part of your overall assessment.

Your degree at the University of Leeds

Once you successfully complete the programme and meet all necessary requirements, which for some progression degrees may also include an IELTS test, you can enter the first year of your chosen undergraduate degree at the University of Leeds*.

Key facts

Duration: 2 semesters (one academic year)

Start dates: September or January

English language entry requirements:
Minimum of IELTS 5.0 (including 5.0 in writing)**

Academic requirements: Good high-school graduation grades, or equivalent

Age: 17+

Improve your English

If you need to improve your English language or raise your IELTS level before you start the International Foundation Year, you can first join an English Language Preparation course at the Leeds International Study Centre.

For further information, including term dates, fees, country-specific entry requirements and English Language Preparation information, please visit leedsisc.com

Study plan options

International Foundation Year			Semesters					
Duration	IELTS**	Start	Jun-Aug	Sept-Dec	Jan-Mar	Apr-Jun	Jun-Aug	Sept
2 semesters	5.0 (minimum 5.0 in writing)	September		International Foundation Year				Start your degree
		January		International Foundation Year				
3 semesters	4.5 (minimum 4.5 in writing)	June	ELP	International Foundation Year				Start your degree
		September		ELP	International Foundation Year			

*Please note that you may be required to complete a UCAS application. The Universities and Colleges Admissions Service (UCAS) is a UK-based organisation whose main role is to operate the application process for British universities.

**Academic IELTS for UKVI. If you do not need a Tier 4 visa, or are exempted in another way, we can accept equivalent proof of English.



BUSINESS, LAW AND SOCIAL STUDIES

This International Foundation Year pathway leads to a wide range of **degrees at the University of Leeds**, in areas ranging from business, marketing and international relations to politics and sociology.

Core modules

Academic English Skills

This module aims to provide you with thorough training in the language and related academic skills, which will enable you to achieve your academic potential at University. These skills include the processes of academic writing, effective and extensive reading strategies, effective participation in seminars and delivery of presentations, and listening to and recording information effectively from lectures. You will also develop the accuracy and range of written and spoken language required to use language effectively and appropriately, with clarity and confidence in an academic context.

Project Study

You will complete a self-study project on a topic you will choose in consultation with your tutor. By the end of this module, you will be able to produce an extended piece of work in the discipline area of your intended degree course, through an on-going, supervised, self-study approach. The project should use a broad range of source material to present a coherent piece of work, which combines balanced factual content with a critical commentary.

Core Maths for Business

You will develop and demonstrate core mathematical skills, including algebra and statistics, relevant to your undergraduate degree course. You will study core mathematical principles and tools. You will practise taught skills within class work and self-study assignments.

Introduction to Principles of Economics

The main aim of this module is for you to gain an introduction to the principle concepts and models of micro-economic analysis, providing a framework upon which further economic analysis can be developed. You will be able to apply your knowledge base as well as learn basic skills relating to data analysis and evaluation of economics issues.

Advanced Principles of Economics

You will get an introduction to macroeconomics and learn about economic cycles, economic indicators and growth, inflation, unemployment, balance of payments, and fiscal and monetary policies.

Route specific modules

Introduction to Pure Mathematics

This module will cover algebra, co-ordinate geometry, trigonometry, differentiation, integration, numerical methods and vectors. You will develop an understanding of notation, terminology, convention and units, how to interpret in mathematical terms verbal, graphical and tabular information, and manipulate mathematical expressions.

Introduction to Business Studies

This module will help you develop an understanding of the operational and strategic problems facing the business enterprise in the modern market economy. This module considers the practical aspects of setting up, establishing and running a business and looks at the external influences that could have a major impact on business success.

Advanced Business Studies

You will develop an understanding of the operational and strategic problems facing the business enterprise in the modern market economy, with reference to marketing management, advertising and public relations.

Introduction to Financial Accounting

This module will teach you how to maintain financial records, understand accounting systems and prepare periodic financial statements of sole traders, partnerships, and limited companies.

Introduction to Law

This module will prepare you for entry onto LLB Law or combined honours degrees and will introduce you to the principles which underpin the English legal system, including the mechanics of the legal process, justice in a wider sense, and the personnel who administer it.

Advanced Law

This module will introduce you to basic legal principles and practice. You will develop an understanding of the principles, issues and legislation relating to contract and consumer protection.

International Relations

You will be introduced to the main areas of international relations. At the end of this module, you will demonstrate a basic knowledge of the subject, and some of the leading theories used to analyse this subject matter.

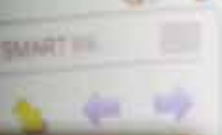
Introduction to British Politics

This module will introduce you to the main issues in the British political system and the core concepts used by political theorists.

BUSINESS, LAW AND SOCIAL STUDIES



- a. Multiple Case Structure VI
- b. General VI
- c. State Machine VI
- d. Parallel Loop VI



Where your studies will take you

Once you successfully complete the International Foundation Year, you will be ready to start your degree at the University of Leeds.

Undergraduate degrees you can go on to study at the University include:

BSc (Hons) Actuarial Mathematics
BSc (Hons) Business Economics
BA (Hons) Business Management
BA (Hons) Business Management and Human Resource
BA (Hons) Business Management with Marketing
BSc (Hons) Business Management and Mathematics
BA (Hons) Childhood Studies
BA (Hons) Criminal Justice and Criminology
BSc (Hons) Economics
BA (Hons) Economics and Geography
BSc (Hons) Economics and Management
BSc (Hons) Economics and Mathematics
BA (Hons) Education
BA, MEnv (Hons) Environment and Business
BSc (Hons) Financial Mathematics
BSc (Hons) Geography
BSc (Hons) Geography and Environmental Mathematics
BSc (Hons) Geography-Geology
BA (Hons) Geography and Management
BA (Hons) Geography and Transport Studies
BA (Hons) Human Resource Management
BSc (Hons) International Business
BSc (Hons) International Business and Finance
BSc (Hons) International Business and Marketing
BA (Hons) International Development
BA (Hons) International Relations
LLB (Hons) Law
BSc, MMath (Hons) Mathematics and Statistics
BSc, MMath (Hons) Mathematics
BA (Hons) Middle Eastern Studies
BA (Hons) Politics
BA (Hons) Social Policy
BA (Hons) Social Policy and Crime
BA (Hons) Social Policy with Enterprise
BA (Hons) Sociology
BA (Hons) Teaching English to Speakers of other Languages (TESOL)

Progression degrees and entry requirements are based on 2018 requirements and may be subject to change. For a full and up-to-date list of progression degrees and entry requirements please visit leedsisc.com

If you want to progress to a degree that is not offered by the International Study Centre, you can apply to study the University of Leeds International Foundation Year. Find out more at internationalfoundationyear.leeds.ac.uk



SCIENCE, ENGINEERING AND COMPUTING

This International Foundation Year pathway course leads to a wide range of **degrees at the University of Leeds**, in areas ranging from computing, biology and engineering to neuroscience and genetics.

Core modules

Academic English Skills

During the course of three modules, you will develop your English communication skills and learn a range of study skills, including writing and reading strategies, presentation and seminar participation, organisation of time and materials, meeting deadlines and responding to feedback. When you have completed these modules, you will be able to take notes and write essays in English. You should also have the confidence to give presentations, answer follow-up questions and contribute to seminar discussions.

Project study

You will complete a self-study project on a topic you will choose in consultation with your tutor. By the end of this module, you will be able to produce an extended piece of work in the discipline area of your intended degree course, through an on-going, supervised, self-study approach. The project should use a broad range of source material to present a coherent, digital piece of work, which combines balanced factual content with a critical commentary.

Introduction to Pure Mathematics

Pure Mathematics modules will provide you with a basic knowledge of pure mathematics and its application, relevant to undergraduate degree programmes. You will be able to understand mathematical notation, terminology, convention and units, understand and interpret in mathematical terms verbal, graphical and tabular information, and manipulate mathematical expressions.

Route specific modules

Introduction to Applied Mathematics and Advanced Applied Mathematics

Applied Mathematics will provide you with a basic knowledge of mechanics, and prepare you for development of mathematical applications in engineering, computer science and informatics.

Introduction to Applied Mathematics you will learn about vectors, forces and equilibrium, relative motion, Newton's Laws of Motion, friction and work, energy and power.

Advanced Applied Mathematics will cover advanced vectors, forces as fixed vectors, centres of gravity and mass, and particle dynamics.

Advanced Pure Mathematics

Advanced Pure Mathematics will cover straight lines and linear equations, set theory and probability, statistics, linear programming, indices and logarithms, and experimental law.

Core Mathematics for Science

You will develop and demonstrate core mathematical skills, including algebra and statistics, relevant to an undergraduate degree course. You will study core mathematical principles and tools as stated within the module curriculum, and practice taught skills within class work and self-study assignments and practice questions similar to the format of those within the final examination.

Introduction to Physics

This module will provide you with a basic knowledge of atomic physics, materials, heat and gases, and oscillations and waves. At the end of this module, you will be able to apply the appropriate laws of physics to problem solving in these areas.

Advanced Physics

This module will provide you with a basic knowledge of electrical current and charge, potential difference, resistance, capacitance, transistors and amplifiers, electrical fields, gravitational fields, magnetic fields and electromagnetic fields.

Introduction to Chemistry

In Chemistry you will learn formulae, equations and moles, atomic structure, introduction to redox systems, thermodynamics and bonding. You will understand the basis of atomic and molecular structure and of chemical bonding, and recognise the differences in properties between ions and molecules. You will also be able to use the mole concept and balance chemical equations, with an understanding of the principles of redox reactions.

Advanced Chemistry

This module will help you to develop the basic principles of Chemistry, building on the knowledge, understanding and skills learned in Introduction to Chemistry. You will be able to present chemical data and ideas in a clear form. You will understand how chemical reactions work and the main factors which affect them, with particular reference to equilibria including acid-base equilibria.

Introduction to Biology

In this module you will learn about biological molecules, cellular structure, cell division, movement through cell membranes, enzymes and metabolic pathways.

Advanced Biology

In this module you will study physiological processes, particularly in humans, including the cardio-vascular, nervous, digestive and reproductive systems, control and coordination and, osmo-regulation.

SCIENCE, ENGINEERING AND COMPUTING



Where your studies will take you

Once you successfully complete the International Foundation Year, you will be ready to start your degree at the University of Leeds.

Undergraduate degrees you can go on to study at the University include:

BSc (Hons) Actuarial Mathematics	BSc (Hons) Geography-Geology
BEng, MEng (Hons) Aeronautical and Aerospace Engineering	BSc, MGeol (Hons) Geological Sciences
BSc, MEng (Hons) Applied Computer Science	BSc, MGeol (Hons) Geophysical Sciences
BEng, MEng (Hons) Architecture	BSc, MBiol (Hons) Human Physiology
BEng, MEng (Hons) Architectural Engineering	BSc, MMath (Hons) Mathematics and Statistics
BEng, MEng (Hons) Automotive Engineering	BSc, MMath (Hons) Mathematics
BSc (Hons) Aviation Technology and Management	BEng, MEng (Hons) Mechanical Engineering
BSc (Hons) Aviation Technology with Pilot Studies	BEng, MEng (Hons) Mechatronics and Robotics
BSc, MBiol (Hons) Biochemistry	BSc, MChem (Hons) Medical Biochemistry
BSc, MBiol (Hons) Biological Sciences	BEng, MEng (Hons) Medical Engineering
BSc, MBiol (Hons) Biological Sciences (Biotechnology with Enterprise)	BSc (Hons) Medical Microbiology
BSc, MBiol (Hons) Biology	BSc, MBiol (Hons) Medical Sciences
BSc, MBiol (Hons) Biology with Enterprise	BSc, MBiol (Hons) Medicinal Chemistry
BSc (Hons) Business Management and Mathematics	BSc, MEnv (Hons) Meteorology and Climate Science
BEng, MEng (Hons) Chemical and Energy Engineering	BSc, MBiol (Hons) Microbiology
BEng, MEng (Hons) Chemical and Materials Engineering	MNatSci (Hons) Natural Sciences
BEng, MEng (Hons) Chemical and Nuclear Engineering	BSc, MBiol (Hons) Neuroscience
BEng, MEng (Hons) Chemical Engineering	BSc, MSci (Hons) Nutrition
BSc, MChem (Hons) Chemistry	BEng, MEng (Hons) Petroleum Engineering
BSc, MChem (Hons) Chemistry and Mathematics	BSc, MBiol (Hons) Pharmacology
BEng, MEng (Hons) Civil Engineering	BSc, MPhys (Hons) Physics
BEng, MEng (Hons) Civil and Environmental Engineering	BSc, MPhys (Hons) Physics with Astrophysics
BEng, MEng (Hons) Civil and Structural Engineering	BEng, MEng (Hons) Product Design
BEng, MEng (Hons) Civil Engineering with Project Management	MPsyc (Hons) Advanced Psychology
BEng, MEng (Hons) Civil Engineering with Transport	BSc (Hons) Psychology
BSc, MEng (Hons) Computer Science with Artificial Intelligence	BSc, MBiol (Hons) Sport and Exercise Sciences
BSc, MEng (Hons) Computer Science with High Performance Graphics and Games Engineering	BSc, MBiol (Hons) Sports Science and Physiology
BSc, MSci (Hons) Computer Science with Mathematics	BSc, MEnv (Hons) Sustainability and Environmental Management
BSc, MEng (Hons) Computer Science	BSc, MPhys (Hons) Theoretical Physics
BSc, MBiol (Hons) Ecology & Environmental Biology	BSc, MBiol (Hons) Zoology
BEng, MEng (Hons) Electronic and Communications Engineering	
BEng, MEng (Hons) Electronic and Electrical Engineering	
BEng, MEng (Hons) Electronic Engineering	
BSc (Hons) Economics and Mathematics	
BEng, MEng (Hons) Electronics and Computer Engineering	
BEng, MEng (Hons) Electronics and Renewable Energy Systems	
BSc, MEnv (Hons) Environmental Science	
BSc (Hons) Financial Mathematics	
BSc, MSci (Hons) Food Science	
BSc, MSci (Hons) Food Science and Nutrition	
BSc, MSci (Hons) Genetics	
BSc (Hons) Geography	
BSc (Hons) Geography and Environmental Mathematics	

Progression degrees and entry requirements are based on 2018 requirements and may be subject to change. For a full and up-to-date list of progression degrees and entry requirements please visit **leedsisc.com**

If you want to progress to a degree that is not offered by the International Study Centre, you can apply to study the University of Leeds International Foundation Year. Find out more at **internationalfoundationyear.leeds.ac.uk**



INTERNATIONAL YEAR ONE

The International Year One course covers two distinct pathways, International Relations and Biological Sciences, allowing you to progress to the second year of a degree in your chosen subject.

Why the International Year One?

This course is equivalent to the first year of an undergraduate degree, so you can graduate in three years.

What you will learn

In addition to learning English language and university study skills, you will study modules that will expand your knowledge of international relations or biological sciences.

Your assessment

Our teachers will monitor your progress closely, ensuring you are on track with your studies. You will take part in exams, group projects, presentations and essays as part of your overall assessment.

Your degree at the University of Leeds

Once you successfully complete the programme and meet all the necessary academic and English language requirements, you will join the second year of your International Relations or Biological Sciences+ degree.

For International Relations, you will also need to take an IELTS test at the end of your course and achieve an overall score of 6.5 (no less than 6.0 in each component).

Key facts

Duration: 2 semesters

Start dates: September or January

English language entry requirements:

Academic IELTS* for UKVI 5.5 (minimum of 5.5 in writing) or equivalent

Academic requirements: Good high-school graduation grades (or equivalent) plus one year of further study

Age: 17+

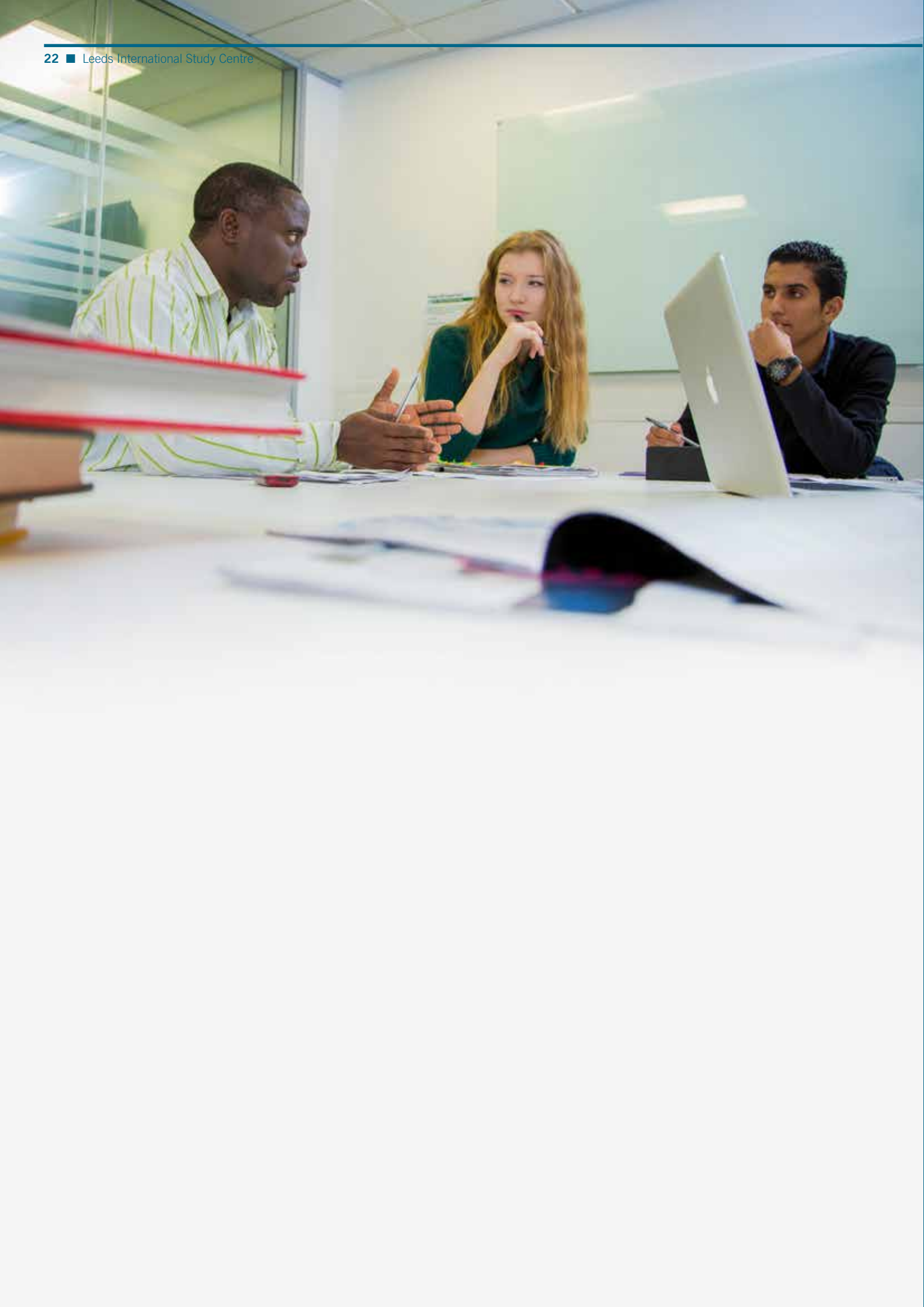
For further information, including term dates, fees, country-specific entry requirements and English Language Preparation information, please visit leedsisc.com

Study plan options

International Year One		Semesters					
Duration	IELTS*	Start	Sept-Dec	Jan-Mar	Apr-Jun	Jun-Aug	Sept
2 semesters	5.5 (minimum 5.5 in writing)	September	International Year One				Start your degree
		January		International Year One			

*If you do not need a Tier 4 visa, or are exempted in another way, we can accept equivalent proof of English.

+ AES score of 65% overall required (with no individual course less than 40%).



INTERNATIONAL RELATIONS

The International Year One leads to the second year of the BA (Hons) International Relations degree at the University of Leeds.

Core modules

Academic English Skills

This module aims to provide you with thorough training in the language and related academic skills which will enable you to best achieve your academic potential at University. These skills include the processes of academic writing, effective and extensive reading strategies, effective participation in seminars and delivery of presentations, and listening to and recording information effectively from lectures. You will also develop the accuracy and range of written and spoken language required to use language effectively and appropriately, with clarity and confidence in an academic context.

Studying and Researching in International Relations

You will receive an introduction to the UK education system and the academic skills you need to succeed in your undergraduate degree. This unit covers many themes including research activity, appropriate research methods and how to conduct research in the field of politics and international studies.

Making of the Modern World: An Introduction to International Relations

You will receive an introduction to international relations by focusing on the development of the states system and traditional schools of thought in international relations.

Comparative Politics

You will develop your basic knowledge of the key elements of political systems, terms and issues. You will also become familiar with books and texts on the subject of political processes, learn how to analyse basic data and take part in group exercises.

British Politics

You will examine the complexity of the political processes in Britain, the major issues and debates in British Politics since 1945 and their impact nationally and internationally.

The Changing World: International Relations since 1945

You will look at a number of historical developments that happened after 1945, including the Cold War, European integration, Arab-Israeli conflict and international terrorism.

Introduction to Global Politics

You will gain a historical context of global politics by covering some of the key developments in world politics from 1900 to 1999, and explore the meaning of globalisation.

Freedom, Power and Resistance

You will receive an introduction to political theory and have the opportunity to critically examine your own political views. You will also learn about famous political thinkers, such as Plato, Thomas Hobbes, Jean-Jacques Rousseau, Edmund Burke, and Karl Marx.

The Global Economy and International Trade

You will receive an introduction to the key differences, complexities and risks involved in trading in a global context.

In addition to the use of the facilities at Leeds Beckett University, students on this programme will be able to use the University of Leeds libraries.

Where your studies will take you

After you successfully complete the International Year One, you will be ready to start your degree at the University of Leeds.

The undergraduate degree that you can go on to study at the University of Leeds is:

BA (Hons) International Relations

Progression degrees and entry requirements are based on 2018 requirements and may be subject to change. For a full and up-to-date list of progression degrees and entry requirements please visit leedsisc.com



BIOLOGICAL SCIENCES

Studying this pathway allows you to progress to the second year of an undergraduate degree from the Faculty of Biological Sciences at the University of Leeds.

Core modules

Academic English Skills

This module aims to provide you with thorough training in the language and related academic skills which will enable you to best achieve your academic potential at University. These skills include the processes of academic writing, effective and extensive reading strategies, effective participation in seminars and delivery of presentations, and listening to and recording information effectively from lectures. You will also develop the accuracy and range of written and spoken language required to use language effectively and appropriately, with clarity and confidence in an academic context.

Molecular and Cellular Biology

On completion of this module, you will have a comprehensive grounding in the molecular basis of life from the atomic scale up to cells and tissues.

Microbiology

You will have had an introduction to the full range of microbial life, from the techniques used to study microorganisms and to the interactions, both beneficial and adverse, between microbes and other life forms on earth.

Fundamentals of Genetics

The module provides an introduction to genetics with particular emphasis on cellular and molecular mechanisms. It covers the principle features of the transmission, replication, modification and expression of genetic information in prokaryotes and their viruses, and in eukaryotes.

Laboratories 1 and 2

These practical laboratory sessions provide you with an essential understanding of key aspects of the core modules of the International Year One course, in preparation for a continued degree in Biological Sciences.

Physiology and Anatomy

This module provides an introduction to different cell types, human tissues, major organs, body systems and disease.

Introduction to Neuroscience

This module provides an introduction to the central nervous system and the biology of the mind. You will investigate the development, evolution and structure of neurons and the process of synaptic transmission.

Fundamentals of Pharmacology

This module will introduce you to the field of drugs and the principles of how drugs produce both beneficial and harmful effects on the human body.

When studying Biological Sciences at the University of Leeds, you will benefit from a £2.25 million investment in laboratories and research equipment.

Where your studies will take you

After you successfully complete the International Year One, you will be ready to start your degree at the University of Leeds.

Undergraduate degrees you can go on to study at the University include:

BSc (Hons) Biological Sciences

BSc (Hons) Genetics

BSc (Hons) Human Physiology

BSc (Hons) Medical Sciences

BSc (Hons) Microbiology

BSc (Hons) Medical Microbiology

BSc (Hons) Neuroscience

BSc (Hons) Pharmacology

Progression degrees and entry requirements are based on 2018 requirements and may be subject to change. For a full and up-to-date list of progression degrees and entry requirements please visit leedsisc.com

COME AND FIND YOUR PLACE

At the **University of Leeds**, you will be a part of the next generation of **highly skilled, critical thinkers** - shaping the world around you in years to come.

After you successfully complete your course at the Leeds International Study Centre you will progress to the prestigious University of Leeds - ranked 10th in the UK in The Times and The Sunday Times Good University Guide 2018.

During your degree you will discover a complete student experience that is shaped around your individual goals, interests and career ambitions.

You will learn through a combination of:

- Lectures
- Seminars
- Tutorials
- Personal tutor meetings
- Private study
- Project work
- Laboratory work
- Fieldwork

Your inspiration

Once you progress to your degree at the University of Leeds you will be taught by academics who are experts in their fields. You will be close to the breakthroughs that are having a real impact in the world, and have the opportunity to get involved in research happening on campus.

Research placements may be available as part of your undergraduate degree. You may also be able to undertake a research project in your final year, giving you a chance to make your own discoveries.

Many degree courses offer discovery modules that give you the opportunity to explore your academic interests. You can choose to develop your knowledge of a subject related to your degree, or try something completely new.

University of Leeds subjects rank in the top 10 in the UK:

2	Food Science
3	Sports Science
4	Accounting and Finance
5	Aeronautical & Manufacturing Engineering
5	Anatomy and Physiology
5	Mechanical Engineering
6	Criminology
6	Economics
7	Civil Engineering
8	Law
9	Electrical and Electronic Engineering
9	Geography and Environmental Science
10	Business Studies

(The Times and The Sunday Times Good University Guide 2018)

TOP 10

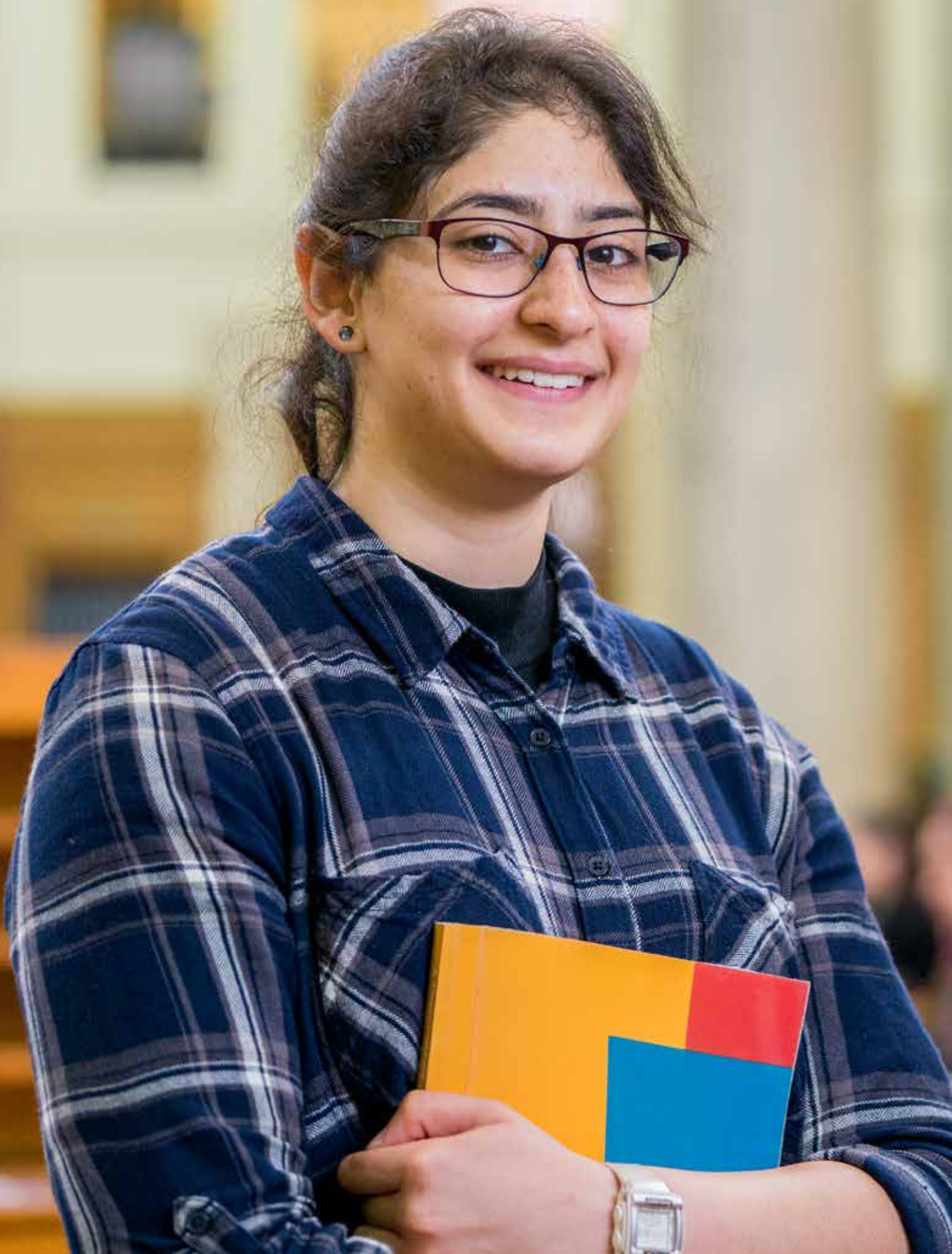
University of Leeds is ranked 10th in the UK (The Times and The Sunday Times Good University Guide 2018).

24

University of Leeds is one of 24 research-intensive, world-class universities that make up the Russell Group.

Top 100

Universities in the world for academic reputation. (QS World University Rankings 2018).



Suneet from Kenya

Studied International Foundation Year in Science, Engineering and Computing

Now studying Zoology at the University of Leeds

“I come from Kenya in Africa, the land of animals. I was fond of animals and dinosaurs ever since I was young. I didn't know which to pick, zoology or veterinary sciences, but in high school I decided to go with zoology. It gives me a broader chance to get a job in conservation, and you can become a park ranger. You can also go into veterinary sciences.

I had a really good time at the International Study Centre, I felt welcomed. I got a lot of help, especially from my biology tutor. She always had extra work for me. My English tutor helped me a lot as well, to improve my English skills, especially in writing.

The International Foundation Year was a year for me to open myself up and get to know different people from different places. I made more friends in one year than I ever had in school. I felt that the International Foundation Year was the best year.

I picked Leeds because the University offers a variety of field courses and placement years. It excited me because it's something different. There is a turtle conservation project in Greece this summer, and I'm probably going to go for it.”

FIND NEW DISCOVERIES

Research is at the **heart of learning at the University of Leeds**. You will find out about **discoveries** as they are happening, sometimes even before they have been published.

91%

of the University's final year students rated their course as intellectually stimulating.
(NSS, 2015)

Top 20

University of Leeds is ranked in the top 20 in the UK for research power.
(Times Higher Education World University Rankings, 2017)

Top 5

University of Leeds is ranked 4th out of participating Russell Group universities for international student satisfaction
(Complete University Guide, 2017)



The University works with industry partners to make the most of its research and expertise, creating a stimulating environment for you to learn in.

A selection of some of the current research topics at Leeds:

A computer server that is good for the environment

A new liquid-cooled computer server, tested at the University of Leeds, could significantly reduce the carbon footprint of the internet.

Driving the future of car design

Leeds has joined three other leading UK universities, car company Jaguar Land Rover and the Engineering and Physical Sciences Research Council in a £10m project to improve virtual engineering.

Medical research to treat diseases

University of Leeds scientists have discovered a gene, Piezo1, which is important in blood vessel formation. This research will look at how this gene can help us find better treatments for cardiovascular diseases.

New drug delivery device

The Leeds Microbubble Consortium brings together engineers, physicists, chemists and cancer specialists to work on microbubbles which can move around the human body. Researchers believe that if these bubbles carry medication they could deliver drugs directly to cancerous tumours, revolutionising future cancer treatment.

State-of-the-art research facilities

The UK National Facility for Innovative Robotic Systems is based at Leeds and gives the University's researchers and industrial partners access to equipment and technologies for robot design and construction that is among the most advanced in the world.

Water@Leeds is the largest interdisciplinary centre for water research and training in the world and it outperforms global citation benchmarks across many water research areas.



FIND MODERN FACILITIES

The University of Leeds has impressive, **world-class** facilities that will complement and **enhance** your degree studies.

Once you leave the Leeds International Study Centre and progress to the University of Leeds, you will find everything you need on campus. From new laboratories and lecture theatres, to one of the largest and most impressive libraries in the UK, you will have access to the very best study facilities.

University libraries

Four libraries on campus provide a range of flexible study spaces, where you can work on your own, or in a group.

The Laidlaw Library, opened in 2015, has been designed for undergraduate students. It has 1,000 seats, IT zones and study facilities with the latest technology, including interactive presentation equipment.

The libraries have:

- 4,000 study spaces
- 2.8m printed books
- 500,000 online books
- 35,000 print and online journals.

Computers and IT

During your degree studies, you will have full access to IT services. There are over 1,700 computers across the campus, some of which are available 24/7, so you will be able to study when it suits you.

The Language Centre

Open to all students, the Language Centre provides access to learning materials in over 40 languages. The Centre also provides English language and study skills support.



Top 5

amongst the universities targeted by the largest number of top employers in 2016-2017
(High Fliers report 2017).

95%

of University of Leeds graduates are employed or studying within six months of graduating
(HESA 2015).

£520m

The University is investing £520 million in developing campus buildings and facilities over the next five years.



FIND NEW INTERESTS

Once you become a University of Leeds student, you will be part of a global community with an exciting social life. On the University campus you will be able to join clubs and societies, enjoy cultural activities, and much more.

The Leeds University Union

Run by students, Leeds University Union is the ideal place to socialise and take a break from your studies. The Union provides advice and support for students, as well as activities and entertainment. Inside, you will find cafés, bars, shops, nightclubs, a theatre, a spa, opticians and a bank.

Clubs and societies

In your free time, you will be able to choose from over 300 clubs and societies representing a wide range of interests and hobbies, such as football, sky-diving, chess, swimming, baking and Harry Potter.

Sport and fitness

The Edge is a £12m gym that has a 25m eight-lane swimming pool with a movable floor, a sauna, climbing wall, squash courts, and much more. For a small fee you can become a member of the Edge and choose from over 140 exercise classes, including Pilates, Yoga, Body Pump and Swimfit. Once you progress to Leeds, if you live in University accommodation, membership of the Edge will be included in your rent.

Performances

stage@leeds is a modern performance space with a 180-seat auditorium, a smaller experimental theatre and a dance studio. You can enjoy regular performances by the University students, as well as by professional dance, performance and theatre groups.

Exhibitions

The Stanley & Audrey Burton Gallery displays innovative exhibitions – it is the best place to see new art on campus.

Green spaces

There are a number of green spaces on campus for you to enjoy. A highlight is the sustainable garden with fresh produce, intended for picking and eating.

Global Community and International Student Support

Leeds has a dedicated International Student Office on campus which can help advise international students on all aspects of living and studying in Leeds, including housing, academic issues, finances and immigration. The University's Global Community also organise an exciting range of social events, enabling University of Leeds students to interact with others from different backgrounds and cultures.

140+

Over 140 exercise classes take place at The Edge each week.

300+

There are more than 300 clubs and societies on campus.

6,000+

Over 6,000 international students from 140 countries study at the University of Leeds each year.



FIND A CITY FULL OF LIFE

Leeds is a **vibrant** city that has something for everyone, from arts, sports and leisure to entertainment and nightlife. With over **60,000 students** in the city, it is an exciting place to live and learn.



Arts and culture

If you like plays, musicals and dance performances, this is the city for you. Leeds has a strong reputation for performing arts, and it is one of only two cities in the UK with its own opera and ballet companies. It is home to several theatres, including the Leeds Grand Theatre and Opera House, the Carriageworks and West Yorkshire Playhouse. There are many galleries and museums too, including the Leeds Art Gallery, Henry Moore Institute and the Leeds City Museum where you can come face-to-face with Nesyamun – a real Egyptian mummy.

Sport

You can enjoy world-class sport in your new town too. Leeds hosts some of the UK's best sporting teams, from Leeds United Football Club to Leeds Rhinos Rugby League. You can also watch live Test Match cricket at the Headingley Carnegie Stadium, so you will have plenty of opportunities to cheer!

Events

Ready to explore new sights and sounds? Leeds hosts many wonderful festivals throughout the year, such as the Leeds Festival, one of the biggest live music events in the UK, the West Indian Carnival and the Leeds International Film Festival.

Yorkshire countryside

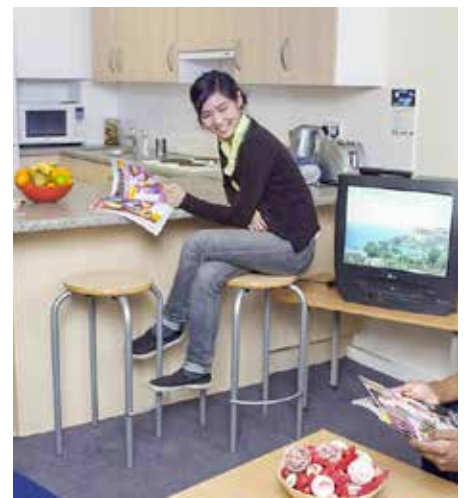
When you need a study break, you won't have far to travel. The Yorkshire countryside is home to stunning landscapes, villages and market towns. You can also get involved with outdoor activities such as horse riding, rock climbing or mountain biking.

Shopping

Need a new outfit to wear at one of the many university social events? Leeds is one of the UK's top shopping destinations, with over 1,000 shops. You can also visit Trinity Leeds shopping centre, which has over 120 shops, bars and restaurants under one roof or Leeds' newest retail centre, Victoria Gate, which opened in 2016. The city is also home to the elegant 18th century Victoria Quarter, the stunning Corn Exchange and Kirkgate Market, one of the biggest indoor markets in Europe.

Food and drink

The city offers a range of places to eat and drink. You can even find a taste of home, with hundreds of cafés and restaurants serving everything from Italian and Mexican to South Asian and Japanese cuisines. Get ready to take your tastebuds on an amazing journey.





FIND YOUR NEW HOME

Living in student accommodation is the best way to experience student life. You will make friends from around the world, have fun and learn to live independently.

Helping you settle in

Living away from home is a big step, and at first everything will seem new. The Leeds International Study Centre provides accommodation for hundreds of international students each year, so we know the best ways to help you settle in. We organise fun activities, so you will soon get used to your new home.

Options to suit you

Depending on when you start your course at the Leeds International Study Centre, you will be able to choose from a range of accommodation options, from self-contained apartment-style accommodation to single study bedrooms with shared facilities.

Student accommodation with shared facilities typically offers:

A great location

You will live in the vibrant city of Leeds, with easy access to the many shops and restaurants that the city has to offer.

Modern and comfortable rooms

Student rooms will have a bed, desk and chair, bookshelf and a wardrobe. You will also have telephone and internet access.

Fully-equipped kitchens

Prepare meals and get to know your new housemates in fully-equipped, shared kitchen and dining facilities.

Private accommodation

The city offers a variety of accommodation known as 'private accommodation'.

To find out more about all of the different accommodation options at the Leeds International Study Centre, visit leedsisc.com/about-the-centre/accommodation



FIND YOUR WAY TO US

Leeds is the third largest city in the UK, located in Yorkshire, in the north of England.

City of Leeds

Leeds has excellent links with major airports and cities in the UK, making it an ideal base from which you can explore the rest of the country and Europe.

Travelling times by train from Leeds to:

York: 25 minutes

Manchester: 1 hour

Liverpool: 1 hour

London: 2 hours and 15 minutes

Edinburgh: 3 hours

Leeds-Bradford Airport: 30 minutes

Manchester Airport: 1 hour and 30 minutes

Heathrow Airport: 3 hours and 20 minutes

To plan your train journey to or from Leeds, visit nationalrail.co.uk



LEEDS INTERNATIONAL STUDY CENTRE

Leeds International Study Centre is located at Carnegie Stand, at the world-famous Headingley Carnegie Stadium.



To plan your bus journey to or from the Leeds International Study Centre, visit [firstgroup.com/leeds](https://www.firstgroup.com/leeds)



HOW TO APPLY

If you would like to apply to study at the Leeds International Study Centre, you will need to complete an application form and submit the relevant documentation.

You can either apply through your local education agent or directly via our website. If you are applying directly and have a question, our Student Enrolment Advisers will be happy to help. They speak a variety of languages and understand several more.

Call: **+ 44 (0) 1273 339333**

For full application information visit **leedsisc.com**

Student insurance

We strongly recommend that international students have the protection of personal insurance whilst in the UK.

To cover you as a student at the International Study Centre, you may wish to purchase our "StudyCare Insurance Plus" insurance cover. This policy will cover you for loss of personal possessions, travel delay, as well as providing medical insurance until the end of your International Study Centre academic programme. You can purchase StudyCare Insurance Plus as part of the application process. If you prefer, you may take out insurance cover with another provider.

For more information visit **leedsisc.com**

The Leeds International Study Centre programmes are provided by Study Group in collaboration with the University of Leeds.

Programmes at the International Study Centre are delivered by Study Group.

Study Group is a global leader in preparing students for international academic success and rewarding careers through a life-changing learning experience. We offer customised programmes across higher education, language and online education starting from high school to lifelong learning. Study Group taught more than 60,000 students from more than 150 countries across the UK, Europe, USA, Canada, Australia and New Zealand in 2017.

Disclaimer

This brochure is issued for the general guidance of students considering entry to the Leeds International Study Centre from 2018.

The information is correct at the time of going to press and the programmes and services described herein are those which Study Group is planning to offer. However, Study Group reserves the right, to amend, add or remove any programme and/or services set out in this brochure and/or the timetable, delivery, content syllabus and assessment of such programmes.

The International Study Centre programmes are provided by Study Group in collaboration with University of Leeds.

Study Group reserves the right, where applicable, to amend the regulations governing programmes at the Leeds International Study Centre. We therefore strongly recommend that immediately prior to making any application to - or accepting any offer from - us, you refer to the most up-to-date version of the programme descriptions and specifications and the regulations on the Leeds International Study Centre website.

Study Group also reserves the right to make variations to the contents and methods of delivery of the programmes and services, to discontinue programmes and services and/or to combine and merge programmes, if such action is reasonably considered to be necessary by Study Group.

Applicants to Study Group programmes will be notified as soon as practicable of any material changes likely to have a bearing on their application, such as cancellation of, or major modification to programmes offered, changes to accommodation provision or fees and charges to be levied where applicable.

