

ONCAMPUS
LUND SWEDEN

Progress to a Bachelor's or
Master's degree in Sweden – one
of the most innovative countries
in the world

In collaboration with



LUND
UNIVERSITY



Kristianstad
University
Sweden



2020-2021

Achieve more



ONCAMPUS LUND SWEDEN

Study at **ONCAMPUS** Lund Sweden with opportunity to progress to our partner universities, Lund University, Kristianstad University and Swedish University of Agricultural Sciences.



Home of the **Nobel Prize**

the world's most prestigious academic distinction which recognises academic, cultural and/or scientific advances

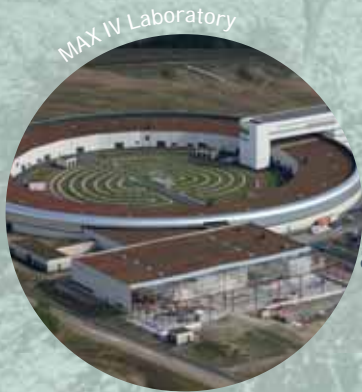


Sweden is ranked among the **TOP 4**

countries in the world at providing higher education
Universitas 21 Ranking 2019

Swedes have the **highest proficiency in English**

as a second language in the world
Education First English Proficiency Index 2018



Sweden is one of the world's most innovative and research-intensive nations

Global Innovation Index 2017

Sweden is one of the safest countries in the world

with a great global reputation, ranked as one of the best in which to live
2017 Social Progress Index

Sweden is ranked one of the **most creative**

countries in the world and is well known for its eco-friendly culture

90% of Swedes speak English

offering students an international environment to live and study within

Sweden is ranked seventh **most innovative economy**

in the world
by the 2019 Bloomberg Innovation Index

Contents

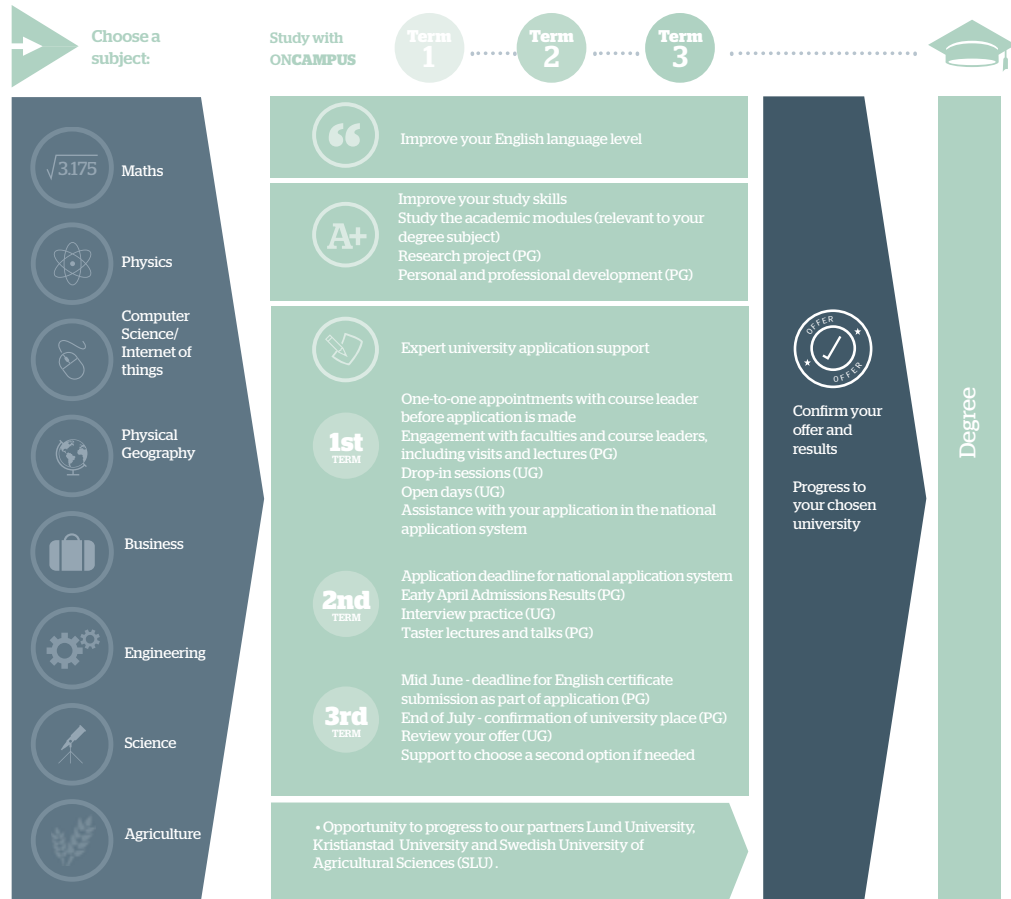
Reaching a top Swedish university	
Your route to a top Swedish university	04
Exceptional support to make your university application	05
Our Partners	
Lund University	06
Kristianstad University	08
Swedish University of Agricultural Sciences	10
Progression degrees	12
About ONCAMPUS	
How ONCAMPUS works	16
Your route to a degree at a top Swedish university	17
Our Programmes	
Pre-Bachelor's Preparation Programme (PBPP)	18
Pre-Master's Preparation Programme (PMPP)	20
About Student Life	
Accommodation	22
Applying	
Next steps	24
Application form	25

Your route to a top Swedish university

Preparing for your degree

Have you:

- completed high school for Undergraduate or have a Bachelor's degree for Master's?
- an IELTS score of 6.0 or more for Undergraduate or 5.5 or more for Master's?
- the ambition to graduate from a top Swedish university?



Exceptional support to make your university application

➤ **90%**

progression to Lund University and other Swedish universities in 2019

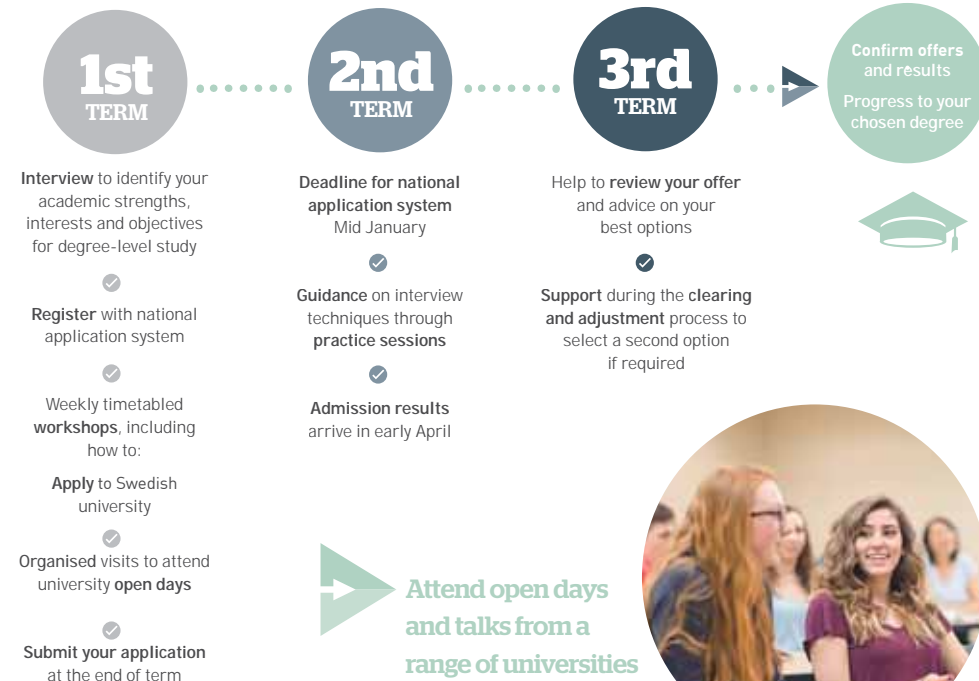
(from all PMPP students who met the entry criteria)

Choosing the right university is one of the most important decisions you will make. At ONCAMPUS Lund Sweden we will give you all the information, guidance and support you need to make this decision from the start of your programme.

Master's degrees



Bachelor's degrees



Lund University



Sweden's top-ranked comprehensive university
(QS World University Rankings 2020)

A member of the international research-intensive university network LERU and U21



TOP

100

in the QS World University Rankings 2020

1st

choice for international students studying in Sweden
(National admissions statistic)

Founded in 1666

Lund is one of the oldest and extensive universities in northern Europe



Ultrasound, dialysis & Bluetooth are all examples of revolutionary discoveries that have their roots in research at Lund University

Lund University attracts students of 130 nationalities, creating a truly international campus



MAX IV Laboratory is the world's foremost synchrotron radiation source which has put Sweden in a class of its own in materials and nano research. Max IV is hosted by Lund University



Kristianstad University

Kristianstad University (HKR) is a modern university situated in southern Sweden with easy access to larger cities and mainland Europe. As a small higher education institution Kristianstad focuses its attention on a few high quality programmes offering education with a strong focus on employment and internationalisation.

FOUNDED IN

1977

although HKR can trace its roots back to

1835

Just one hour from

Malmö, the

3rd largest

city in Sweden



Bike trails, hiking, canoeing and climbing make Kristianstad ideal for the **outdoor adventure**

Kristianstad is well known for its wetlands which are a designated **Biosphere Reserve** by UNESCO



No.1

Business Administration programmes at HKR are classified as best in Sweden

by the evaluations of the Swedish Higher Education Authority (UKA)



Swedish University of Agricultural Sciences

The Swedish University of Agricultural Sciences (SLU) offers programmes that are unique and based on their strength and profile areas, a bio-based economy and environment, health and quality of life.



29th
for Plant and Animal Science
U.S. News Best Global Universities 2019



SLU is spread across three main campuses located in **Alnarp, Umeå and Uppsala** altogether housing around **3,700 students**

The Times Higher Education Ranks SLU as the

TOP 12th

university of the world among smaller universities (THE 2019)

TOP 07

in the world for four subjects - Forestry, Soil Science, Biodiversity and Veterinary Sciences (Center for World University Rankings 2017)



Agriculture and Forestry

Top 3

ranked in the QS World University

Rankings 2019

Alnarp castle in the middle of Campus Alnarp. Photo by Jenny Svernas-Gillner, SLU



Degrees you can progress to

Each degree has its own additional progression requirements and students are advised to check www.lunduniversity.lu.se for the most up to date entry requirements. For Master's study, students must ensure their Bachelor's degree meets the specific requirements for the intended Master's degree of choice. **ONCAMPUS** Lund Sweden students will be supported to apply to any of the following degrees at Lund University.

Bachelor's degrees entry requirements - Lund University

ONCAMPUS PROGRESSION PATHWAY: SCIENCE

BSc Mathematics
General requirements and courses corresponding to the following Swedish upper secondary school studies: Mathematics 4.

BSc Physics
General requirements and courses corresponding to the following Swedish upper secondary school studies: Physics 2, Chemistry 1 and Mathematics 4.

ONCAMPUS PASS MARK (IN ACADEMIC MODULES AND EXAMS): 60%

BSc Physical Geography and Ecosystem Science
General requirements and courses equivalent to the following Swedish upper secondary school courses: Mathematics 4 in combination with Biology 1, Physics 1, Chemistry 1 or Level 2 in two of the subjects.

ENGLISH REQUIRED (IELTS EQUIVALENT: 6.5 (with no component lower than 5.5))

Master's degrees entry requirements - Lund University

ONCAMPUS PROGRESSION PATHWAY: ENGINEERING

MSc Architecture

A Bachelor's degree in architecture. A digital portfolio of the applicant's own work in the field that clearly proves that the applicant has good potential to benefit from the programme.

MSc Biotechnology

A Bachelor's degree in biotechnology, biochemical engineering, food technology or equivalent. Completed courses in mathematics/calculus and microbiology or biochemistry.

MSc Embedded Electronics Engineering

A Bachelor's degree in electrical engineering, computer science or equivalent. Completed courses in mathematics (calculus, differential equation, transform theory and linear algebra) of at least 30 credits/ECTS, as well as completed courses in basic circuit theory, electronics, analogue electronics and digital electronics corresponding to at least 30 credits/ECTS in total. The applicant must have basic programming skills (at least one course) and knowledge of electronic description languages, such as VHDL/Verilog.

MSc Energy-Efficient and Environmental Building Design

A Bachelor's degree in architecture, civil engineering, architectural engineering or equivalent. Completed courses within the three subjects building technology/structural engineering, building physics/science and building services. A minimum of 3 credits/ECTS is required for each of these three subjects. In addition, a total of 30 credits/ECTS is required as sum of any combination of courses within energy and building technology/structural engineering, building physics/science, building services, building materials and architecture.

MSc Food Technology and Nutrition

A Bachelor's degree in food technology, food engineering, chemical engineering, engineering biotechnology, chemistry or equivalent. Completed courses in mathematics/calculus, microbiology, chemistry and biochemistry.

MFA Industrial Design

A Bachelor's degree with relevance to the applied education. A digital portfolio of the applicant's own work in the field that clearly proves that the applicant has good potential to benefit from the programme.

MSc Logistics and Supply Chain Management

A Bachelor's degree in industrial engineering and management, mechanical engineering, operations management, logistics or equivalent. Completed basic courses in algebra and calculus corresponding to at least 20 credits/ECTS, one course in business logistics and/or operations management (or related), one course in mathematical statistics/probability theory and one course in computer programming.

ONCAMPUS PASS MARK (IN ACADEMIC MODULES): 40%

MSc Machine Learning, Systems and Control

A Bachelor's degree in science, technology, engineering, mathematics (STEM) or equivalent. Completed courses in mathematics (linear algebra, calculus in one and several variables, transforms and linear filtering) of at least 30 credits/ECTS as well as one completed course in mathematical statistics, one in computer programming or computer science and one in control engineering.

MSc Nanoscience

A Bachelor's degree in science or engineering. Completed courses of at least 40 credits/ECTS in physics and 30 credits/ECTS in mathematics, covering quantum mechanics, electromagnetism, solid-state physics, multi-dimensional calculus, linear algebra and Fourier analysis.

MSc Pharmaceutical Technology: Discovery, Development and Production

A Bachelor's degree in chemical engineering, biotechnology, chemistry or medicinal chemistry. Completed courses of at least 10 credits/ECTS in mathematics (including algebra, analysis and statistics) and at least 60 credits/ECTS in chemistry, chemical engineering or biotechnology, of which at least 5 credits/ECTS in organic chemistry, 5 credits/ECTS in biochemistry / cell biology, and 5 credits/ECTS in analytical chemistry.

MSc Photonics

A Bachelor's degree in science or engineering. Completed courses of at least 40 credits/ECTS in physics and 30 credits/ECTS in mathematics, covering quantum mechanics, electromagnetism, basics in optics, multi-dimensional calculus, linear algebra and Fourier analysis.

MSc Production and Materials Engineering

A Bachelor's degree in mechanical engineering, industrial engineering or equivalent. Completed basic courses in algebra and calculus corresponding to at least 20 credits/ECTS, one course in manufacturing engineering and/or production technology and one course in engineering materials.

MSc Sustainable Urban Design

A Bachelor's degree in architecture, landscape architecture, physical planning or urban design. A digital portfolio of the applicant's own work in the field that clearly proves that the applicant has good potential to benefit from the programme.

MSc Water Resources Engineering

A Bachelor's degree in civil engineering, environmental engineering or equivalent. Completed courses in mathematics/calculus, hydraulics/fluid mechanics and geology.

MSc Wireless Communication

A Bachelor's degree in electrical engineering, computer engineering, information technology or equivalent. Completed courses in mathematics (including calculus, linear algebra, and probability theory) of at least 30 credits/ECTS. The applicant must also have knowledge in signals and systems (including linear systems and transforms), basic programming, electromagnetic field theory and circuit theory, corresponding to at least 30 credits/ECTS.



LUND UNIVERSITY



Master's degrees entry requirements - Lund University

ONCAMPUS PROGRESSION PATHWAY: SCIENCE

MSc Astrophysics

Bachelor's degree of at least 180 credits in physics or the equivalent. The degree must include at least 90 credits in physics.

MSc Atmospheric Sciences and Biogeochemical Cycles

Science Bachelor's degree of at least 180 credits in physical geography, physics or the equivalent.

MSc Bioinformatics

Bachelor's degree of at least 180 credits in molecular biology, biomedicine, biology, bioinformatics, biotechnology, microbiology, biochemistry, computer science, mathematics or the equivalent.

MSc Biology, Animal Ecology

Bachelor's degree of at least 180 credits, of which 90 credits must be in science, including 5 credits in statistics and 60 credits in biology comprising cell biology, genetics, ecology and zoology, or the equivalent.

MSc Biology, Aquatic Ecology

Bachelor's degree of at least 180 credits, of which 90 credits must be in science, including 5 credits in statistics and 60 credits in biology comprising cell biology, genetics, microbiology, ecology, botany and zoology, or the equivalent.

MSc Biology, Conservation Biology

Bachelor's degree of at least 180 credits, of which 90 credits must be in science, including 5 credits in statistics and 60 credits in biology comprising cell biology, genetics, microbiology, ecology, botany and zoology, or the equivalent.

MSc Biology, General

Bachelor's degree of at least 180 credits, of which 90 credits must be in science, including 15 credits in chemistry, 5 credits in statistics and 60 credits in biology comprising cell biology, genetics, microbiology, ecology, botany and zoology, or the equivalent.

MSc Biology, Plant Science

Bachelor's degree of at least 180 credits, of which 90 credits must be in science, including 5 credits in statistics and 60 credits in biology comprising cell biology, genetics, microbiology, ecology and botany, or the equivalent, or Bachelor's degree of at least 180 credits, of which 90 credits must be in science, including 30 credits in chemistry and 45 credits in biology comprising cell biology, genetics, microbiology and molecular biology, or the equivalent.

MSc Chemistry, Biochemistry

Bachelor's degree of at least 180 credits or the equivalent, including at least 90 credits in chemistry, of which at least 15 credits must be in biochemistry.

MSc Chemistry, Physical Chemistry

Bachelor's degree of at least 180 credits or the equivalent, including at least 90 credits in chemistry, of which at least 15 credits must be in physical chemistry. In addition to courses in chemistry, 15 credits in mathematics are required.

MSc Chemistry, Synthetic and Analytical Chemistry

Bachelor's degree of at least 180 credits or the equivalent, including at least 90 credits in chemistry of which at least 7.5 credits must be in general chemistry, 15 credits in physical chemistry, 15 credits in inorganic chemistry, 22.5 credits in organic chemistry, 15 credits in analytical chemistry. In addition to courses in chemistry, 15 credits in mathematics are required.

MSc Geographical Information Systems

Bachelor's degree of at least 180 credits or the equivalent.

MSc Geology, Bedrock Geology

Bachelor's degree of at least 180 credits in geology or the equivalent. The degree must include at least 90 credits in geology.

MSc Geology, Biogeology

Bachelor's degree of at least 180 credits in geology or the equivalent. The degree must include at least 90 credits in geology.

MSc Geology, Quaternary Geology

Bachelor's degree of at least 180 credits in geology or the equivalent. The degree must include at least 90 credits in geology.

ONCAMPUS PASS MARK (IN ACADEMIC MODULES): 40%

MSc Geomatics

Science or Engineering Bachelor's degree amounting to at least 180 credits or the equivalent, within a specialisation of relevance to the study programme.

MSc Mathematical Statistics

Bachelor's degree of at least 180 credits or the equivalent, including at least 90 credits in mathematics, mathematical statistics, numerical analysis, scientific calculations and computer science, of which at least 45 credits must be in mathematics that include courses in multivariate analysis and linear algebra, at least 30 credits in mathematical statistics and at least 15 credits in numerical analysis, scientific calculations and/or computer science.

MSc Mathematics

Bachelor's degree of at least 180 credits or the equivalent, including at least 90 credits in mathematics, or at least 60 credits in mathematics and at least 30 credits in numerical analysis and computational science. The latter alternative applies to applicants who intend to pursue a Master's degree in mathematics, specialising in numerical analysis.

MSc Molecular Biology, General

Bachelor's degree of at least 180 credits or the equivalent, of which 120 credits must be in science/biomedicine/engineering, including: 45 credits in molecular biology comprising genetics, cell biology and microbiology, 7.5 credits in human/animal physiology and 30 credits in chemistry comprising biochemistry.

MSc Molecular Biology, Medical Biology

Bachelor's degree of at least 180 credits or the equivalent, of which 120 credits must be in science/biomedicine/engineering, including: 45 credits in molecular biology comprising genetics, cell biology and microbiology, 15 credits in human/animal physiology and 30 credits in chemistry comprising biochemistry.

MSc Molecular Biology, Microbiology

Bachelor's degree of at least 180 credits or the equivalent, of which 120 credits must be in science/biomedicine/engineering, including: 45 credits in molecular biology comprising genetics, cell biology and microbiology and 30 credits in chemistry comprising biochemistry.

MSc Molecular Biology, Molecular Genetics and Biotechnology

Bachelor's degree of at least 180 credits or the equivalent, of which 120 credits must be in science/biomedicine/engineering, including: 45 credits in molecular biology comprising genetics, cell biology and microbiology and 30 credits in chemistry comprising biochemistry.

MSc Physical Geography and Ecosystem Science

Science Bachelor's degree of at least 180 credits in physical geography, geology, geoscience, biology/ecology, physics, agronomy, forest science, environmental science or the equivalent.

MSc Physics, Biological Physics and Computational Biology

Bachelor's degree of at least 180 credits in physics or the equivalent. The degree must include at least 90 credits in physics.

MSc Physics, General

Bachelor's degree of at least 180 credits in physics or the equivalent. The degree must include at least 90 credits in physics.

MSc Physics, Materials Science

Bachelor's degree of at least 180 credits in physics or the equivalent. The degree must include at least 90 credits in physics.

MSc Physics, Particle Physics

Bachelor's degree of at least 180 credits in physics or the equivalent. The degree must include at least 90 credits in physics.

MSc Physics, Theoretical Physics

Bachelor's degree of at least 180 credits in physics or the equivalent. The degree must include at least 90 credits in physics.

Degrees you can progress to

Each degree has its own additional progression requirements and students are advised to check the respective university web pages for the most up to date entry requirements.

Students must ensure their Bachelor's degree meets the specific requirements for the intended Master's degree of choice.



Bachelor's degrees entry requirements - HKR

ONCAMPUS PROGRESSION PATHWAY: SCIENCE

ONCAMPUS PASS MARK (IN ACADEMIC MODULES): 40%

ENGLISH REQUIRED
IELTS EQUIVALENT: 6.5
(with no component lower than 5.5)

BSc Computer Science – Internet of things

Intermediate level physics (equivalent of Swedish course Physics 2), basic level chemistry (equivalent of Swedish course Chemistry 1) or intermediate level natural sciences (equivalent of Swedish course Natural Sciences 2), advanced-level mathematics (equivalent of Swedish course Mathematics 3C)

BSc Software Development

Specific requirements: intermediate level mathematics (equivalent of Swedish course Mathematics 2A or 2B or 2C)

Master's degrees entry requirements - HKR

ONCAMPUS PROGRESSION PATHWAY: BUSINESS

ONCAMPUS PASS MARK (IN ACADEMIC MODULES): 40%

ENGLISH REQUIRED
IELTS EQUIVALENT: 6.5
(with no component lower than 5.5)

MSc Business Administration - Auditing & Control

Bachelor of Science with the equivalence of 180 credits including at least 90 credits in business administration. At least 15 credits must be in intermediate accounting, management accounting, corporate governance, auditing and at least 15 credits in statistics/business methods and an independent project comprising 15 credits in business administration or equivalent.

MSc Business Administration - International Business & Marketing

Bachelor of Science with the equivalence of 180 credits including at least 90 credits in business administration. At least 15 credits must be in intermediate international business and marketing and at least 15 credits in statistics/business methods and an independent project comprising 15 credits in business administration or equivalent.

All Bachelor's degrees are three year programmes worth 180 credits.
All Master's degrees are one year programmes worth 60 credits.



Master's degrees entry requirements - SLU

ONCAMPUS PROGRESSION PATHWAY: ENGINEERING OR SCIENCE

ONCAMPUS PASS MARK (IN ACADEMIC MODULES): 40%

ENGLISH REQUIRED
IELTS EQUIVALENT: 6.5
(with no component lower than 5.5)

MSc Agricultural Economics and Management

MSc Agricultural Food and Environmental Policy Analysis

MSc Agroecology

MSc Animal Science

MSc EnvEuro - Environmental Science in Europe

MSc Environmental Communication and Management

MSc Environmental Economics and Management

MSc Euroforester

MSc Forest Ecology and Sustainable Management

MSc Landscape Architecture

MSc Landscape Architecture for Sustainable Urbanisation

MSc Management of Fish and Wildlife Populations

MSc Outdoor Environments for Health and Well-being

MSc Plant Biology for Sustainable Production

MSc Rural Development and Natural Resource Management

MSc Soil, Water and Environment

MSc Sustainable Development

MSc Sustainable Food Systems

All Master's degrees are two years programmes worth 120 credits.



"The first thing that comes to mind about what I love about studying in Sweden is the relationship between the teacher and the student. You are much like friends, if you have a problem, you ask a question, if you are concerned about something you talk to them and this is a lovely way to study. The environment of Lund itself inspires me, it is very relaxed and open and is part of the reason I wanted to stay here and study at Lund University."

Amber | Destination: [Lund University](#)
| Studying: [MFA Industrial Design](#)

How ONCAMPUS Works

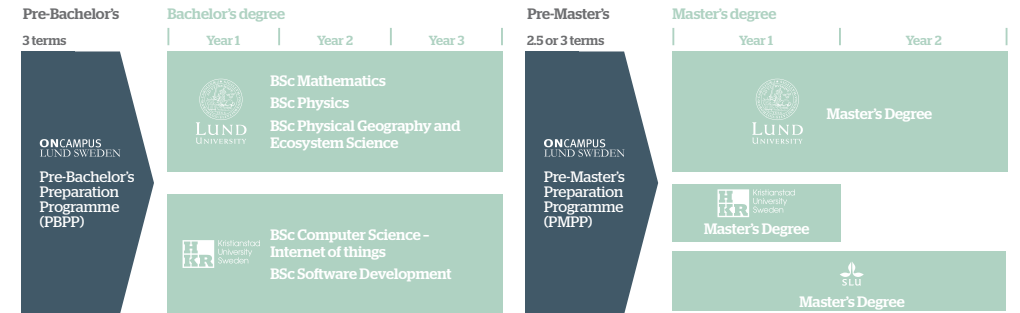


Our programmes at ONCAMPUS Lund Sweden are designed for international students who do not meet the requirements for direct entry to Swedish universities. You will benefit from the support we offer in preparing you to progress to one of our partner universities. Progression, however, is not guaranteed.



Your route to a degree at a top Swedish University

ONCAMPUS Lund Sweden offers a comprehensive academic and English language programme with up to 26 contact hours a week. It will provide you with support in applying for a Bachelor's or Master's programme in Business, Engineering or Science at Lund University, Kristianstad University or Swedish University of Agricultural Sciences while ensuring you are prepared thoroughly for the demands of your chosen degree.



ONCAMPUS gives you...

Outstanding teaching and support

Highly trained, qualified multicultural and multilingual teaching and support staff with experience of living and working overseas.

Regular tutorial meetings to help you gain skills to excel at a world-class research university.

Guidance and support from our partner university with seminars and workshops available to you.

A personal tutor to help guide you through your course and prepare you for progression to your chosen degree.

A proven track record of success

ONCAMPUS is part of Cambridge Education Group, one of the UK's leading university pathway providers since 1952.

Cambridge Education Group was the first private institution to offer university foundation programmes in the UK in 1985, and successfully prepares thousands of students to progress to top universities every year.

A truly international experience

Our programmes attract students from a wide range of countries and cultures.

Our aim is to create a truly international environment to broaden your experience and improve your English language both in and outside the classroom.

Fulfil your ambition for a truly prestigious degree

Lund is one of the world's top 100 universities and the No. 1 choice for students studying in Sweden.

ONCAMPUS Lund Sweden offers tailored support with your application to a Swedish University.

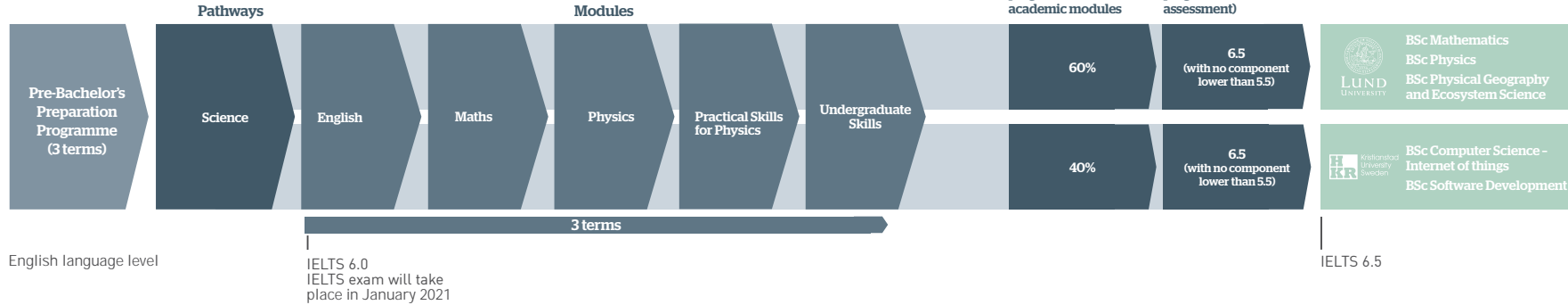


Pre-Bachelor's Preparation Programme (PBPP)



The Pre-Bachelor's Preparation Programme is available as a three-term programme with progression opportunities to degrees at Kristianstad University and Lund University. The programme includes support in applying to your chosen university.

Degree progression route



Entry criteria

English level:
From 6.0 IELTS or equivalent, for the 3-term Programme.

Academic requirements:
High school Successful completion of high school. Please see www.oncampus.global for academic entry requirements.

Guideline minimum age:
17+ Must be 17 at the start of the intended degree programme.



Dates and fees	Number of terms	Tuition fee	Progressing to undergraduate degree starting in
14 September 2020 – 06 June 2021	3 terms	€17,985	September 2021

All programmes are subject to a €300 registration fee and €2,200 deposit which is offset against the last term's fees.

Students will study English and Undergraduate Skills across the three terms and Maths and Physics between September 2020 and January 2021 to ensure university application deadlines are met. The remaining modules will be studied between February 2021 and June 2021 of the PBPP.

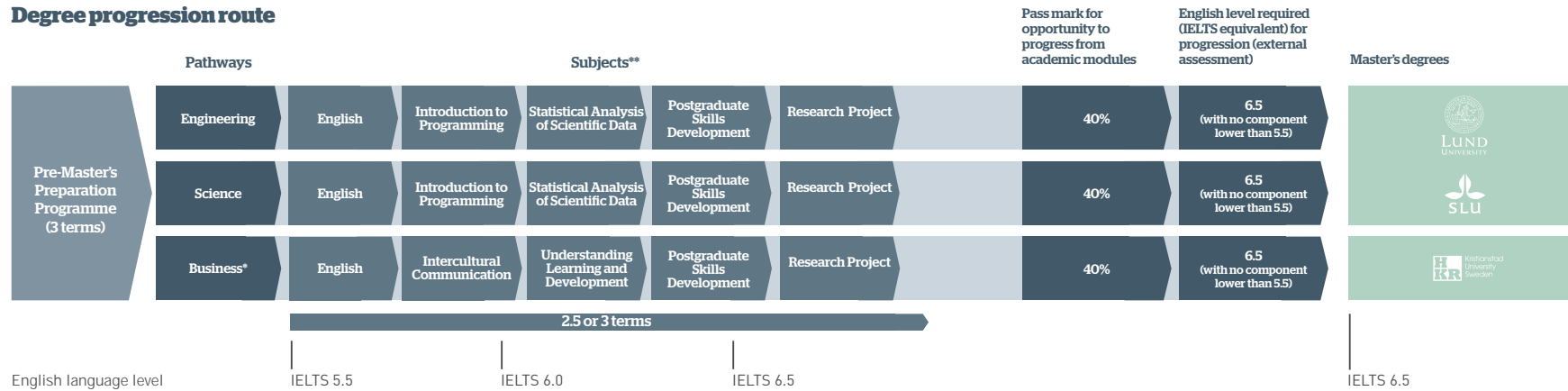




Pre-Master's Preparation Programme (PMPP)

The Pre-Master's Preparation Programme is available as a two or three-term programme offering opportunity for progression to Business Administration at Kristianstad University from the Business pathway or Engineering or Science degrees at Lund University and SLU through the Engineering and Science pathways. The programme includes support in applying to your chosen programme.

Degree progression route



Entry criteria

English level:

From 5.5 IELTS or equivalent, with no single element less than 5.0, for 3-term Programme.

From 6.0 IELTS or equivalent, with no single element less than 5.5, for 2.5-term Programme.

Academic requirements:

Degree Successfully completed your Bachelor's degree or equivalent, from a recognised university.

Guideline minimum age:

21+ Must be 21 at the start of the intended degree programme.



Dates and fees	Number of terms	Tuition fee	Progressing to Master's degree starting in
14 September 2020 – 06 June 2021	3 terms	€17,985	September 2021
09 November 2020 – 06 June 2021	2.5 terms	€14,988	September 2021

All programmes are subject to a €300 registration fee and €2,200 deposit which is offset against the last term's fees.
 *Kristianstad University only.
 **Duration of study affects the number of modules taken, only three term students will take all subjects listed. Please see the website for further details.



Living in Lund Accommodation

Full support is offered by the team at **ONCAMPUS** Lund Sweden to assist you in finding suitable accommodation before you arrive. We are pleased to offer the following housing options available through **ONCAMPUS** Lund Sweden located in the city of Lund. Voted the best place to live in Sweden, Lund is a safe city with the healthiest and youngest population in the country.

In Lund, you find the charm of a small picturesque, cobble-stoned city, side-by-side with big city attractions such as shopping, restaurants and cultural events.



Lund

Situated only a 15-minute cycle to the centre of **ONCAMPUS** and the Botanical Gardens of Lund, our accommodation offers a safe, comfortable home from home to relax in after a day's study.

The New Greenhouse is a high-quality, newly renovated house of high ecological standards. The accommodation provides plenty of social space and has a green community feel. It is close to the city centre and yet with an outlook across the countryside.



Wi-Fi Access



On-site Laundry



5-10 minute cycle to supermarket

Private housing

Private housing is available in Lund, with the city also easy to reach from the larger city of Malmö (only 10 minutes by train to Lund), should you decide to choose this accommodation option. Students will need to research and source this option independently.

Key features of all our accommodation:



Comfortable bedroom, with wardrobe and desk



Shared bathroom



Shared kitchen area



TV area and common room



Gym

Lund, the city of bikes

The easiest way to get around Lund is by bike. The city is small and compact, which means you can cycle across it in no more than 20 minutes.

160 km of cycle paths make biking safe and convenient. Every day, people in Lund cycle as much as four times around the world together!

It's easy to find a second-hand bike once you arrive in Lund and join in the cycling culture.



New Greenhouse



New Greenhouse, shared kitchen



New Greenhouse, bedroom



View from New Greenhouse



Next steps



1 Submit your application by one of the following methods:

- Online: www.oncampus.global Email: admissions@oncampus.global

Please remember to include all relevant documentation:

- Copy of Passport.
- Explanation of any study gaps
- Copies of any previous/current study visas and/or residence permit

Additional documentation may be required depending on the course. Our Admissions team will contact you should this be the case.

2 Our Central Admissions team will review your application.

- We will send you an offer letter which will list any outstanding conditions. We will remove any conditions that have already been met. If we think the course is not right for you, we will suggest an alternative.
- If we have any queries about your application, we will contact you for further information.

3 Your place can only be confirmed once all conditions have been met, including payment of the deposit/registration fee or proof of government sponsorship. However, once the deposit is paid we will hold a place for you.

4 Once you have paid your deposit and met all the conditions of offer, we will confirm your place and send you a Confirmation of Enrolment (CoE).

- We will send you pre-arrival information.
- All students will receive an invitation letter with links to the accommodation options available.

5 You will need to apply for a residence permit to study in Sweden.

Non-EU citizens will need to apply for a residence permit to study in Sweden. You will need to use your CoE to support your residence permit application.

6 You will need to pay at least the first term's tuition fees before you begin your programme of study at ONCAMPUS.

We recommend students fly to Copenhagen and travel to Lund by rail. When you book your flight to Copenhagen Airport, please send us your arrival details by email to lund@oncampus.global. We recommend arriving on a weekday before the induction week and allowing yourself enough time to visit your housing corporation to pick up your accommodation keys.

ONCAMPUS LUND SWEDEN APPLICATION FORM

Apply ONLINE at www.oncampus.global/apply or return this form to:
Admissions Office, ONCAMPUS, 50/60 Station Road, Cambridge, CB1 2JH, United Kingdom
Tel: +44 (0)1223 345698 Email: admissions@oncampus.global

Please write neatly using BLOCK CAPITALS in black ink or typescript.
Incomplete application forms submitted without ALL the supporting documents will delay the decision process.

1. Use of agent (if none, please proceed to section 2)

Please complete the details below and see section 7 of the Conditions of Enrolment which can be found at www.oncampus.global/terms

Representative name _____

Branch _____

2. Personal details (must be completed)

Title (Mr/Mrs/Miss/Ms etc) _____ Date of birth (dd/mm/yy) _____

First name(s) _____

Family name _____

Nationality (as passport) _____ Gender _____

Country of permanent residence _____

Home address _____ Correspondence address (if different) _____

Postcode _____ Postcode _____

Country _____ Country _____

Mobile (incl. country code) _____ Mobile (incl. country code) _____

Telephone (incl. country code) _____ Telephone (incl. country code) _____

Student email (your application cannot be processed if this is missing) _____

3. Is there anything that could negatively impact your application such as a Criminal Conviction?

Yes (please provide further details below) No

Your enquiry cannot be processed if you do not complete this section.

4. Payment of tuition fees

Self Parent/ Guardian Company sponsor Government sponsor

5. Disability/special needs

If you have a disability, impairment or medical condition which may affect your studies please provide details below.

I consent to ONCAMPUS processing my/the student's disability, impairment or medical condition information provided as part of this application.

Signature of student: _____ Signature of parent/legal guardian: _____

You have the right to withdraw your consent at any time by emailing the ONCAMPUS data protection officer on DPO@ceg-uk.com

6. Academic history

Please give details of your current or most recent school, college or university.
Please include full transcripts of all your relevant academic qualifications, translated into English.

Institution _____

Date from _____ Date to _____

ONCAMPUS LUND SWEDEN

APPLICATION FORM

6. Academic history

Have you previously studied in Sweden? Yes No (If YES please provide details below):

7. Details of course(s) for which you wish to apply

Please give details of the **ONCAMPUS** programme for which you are applying.

Please also state the degree you are aiming for:

ONCAMPUS programme:

Pre-Bachelor's Preparation Programme Science

Pre-Master's Preparation Programme Business Engineering Science

Date you wish to start the programme: September 2020 November 2020

University and University degree you wish to progress to – e.g. Lund University: MSc Wireless Communication:

8. How did you hear about us?

Please indicate how you heard of these courses (Please tick)

Agent Exhibition Family Internet

Other (please specify):

9. Checklist

Before sending the application, please ensure you have:

Completed the application form in full and signed it

Enclosed your academic qualifications

Enclosed a copy of your passport and copies of previous visas

Enclosed copies of transcripts for all your relevant qualifications (with certified English translated copies if in any other language)

Provided an explanation of any gaps in your academic record e.g. CV (if applicable)

Enclosed a certificate for a Secure English Language Test such as IELTS

10. Declaration

I declare that I am applying to **ONCAMPUS** as a genuine student and that the information and supporting evidence and academic documents I have provided are true copies. I understand that by signing this declaration I have read, understood and agreed to the terms and conditions and fees of study at **ONCAMPUS** Lund Sweden as outlined on the **ONCAMPUS** website www.oncampus.global/terms and agree to comply with immigration regulations at the time of application and during my course of study.

If you do not have access to the website or would like a written copy of the conditions of enrolment, you can request these from **ONCAMPUS** Central Admissions at admissions@oncampus.global

We would like to send you information about services relevant to **ONCAMPUS** students and your stay in Sweden if you are happy to receive such information.

I am happy to receive information about **ONCAMPUS** products and offers by:

Email Telephone Text message Social Messaging Social Media

Signature of applicant

Date

Parent or guardian signature
(if applicant is not the fee payer or is under 18)

Date

If you wish to stop receiving marketing communications at any time then please click the unsubscribe option in any email received or alternatively please email cegmarketing@ceg-uk.com. For further information on how **ONCAMPUS** processes your personal data please see our Privacy Policy <http://www.cambridgeeducationgroup.com/about-us/privacy-policy.htm>

Follow our latest news

-  facebook.com/oncampusglobal
-  instagram.com/oncampus_global
-  twitter.com/oncampusglobal

HEAD OFFICE

Cambridge Education Group
50/60 Station Road, Cambridge,
CB1 2JH, United Kingdom
Telephone: +44 (0)1223 345698
Email: admissions@oncampus.global
Web: www.oncampus.global

CENTRE ADDRESS

ONCAMPUS Lund Sweden
The Yellow House
Östra Vallgatan 14
Botaniska trädgården/Botanical Garden
22361 Lund
Sweden



www.carbonbalancedprinter.com
Healeys Print Group - Reg. 2108

Information in this brochure is correct at time of issue in November 2019. **ONCAMPUS** and the University Partner reserve the right to alter, reschedule or close courses which do not remain viable: students will be informed.

In collaboration with



LUND
UNIVERSITY



Kristianstad
University
Sweden



ONCAMPUS
LUND SWEDEN

Visit www.oncampus.global

