



# Drew Action Scholars: Community, Innovation, Global Impact

## Take Your Knowledge Outside The Classroom

Drew Action Scholars is a two-year program with a four-year scholarship, guided by a distinctive, results- and action-oriented approach to real-world problem-solving.

Accepted students join a cohort of peers committed to community, innovation and global impact in a connected world. Complete the two-year program and receive a four-year scholarship of \$10,000 (\$2,500/year).

During four well-spent years, Drew Action Scholars major in anything from neuroscience to theatre arts and participate in a rigorous program designed to build leadership skills through special seminars, community-based learning classes, study abroad opportunities and at least 100 hours of community service or experiential learning activities each year.

We believe knowledge is too valuable to leave in the classroom.



## Career readiness? It comes with the curriculum.

Launch is our unique approach to undergraduate education, where life and career readiness is built right into the Drew experience. Launch provides a structure for each student to identify a purpose, a pathway and a plan for achieving life and career goals across their four years at Drew—and beyond.

Personal networks, transferable skills and relevant experiences are just as essential to college as they are to careers. So why not build them into the curriculum?

Drew does just that with Launch, our guarantee that every student graduates on a purpose-driven, experience-based, community-guided path to success. And, because Launch and its components are required for all Drew undergraduates, its benefits are universal. Every student. Every major. Guaranteed.

**You graduate ready to launch.**

## Be A Drew Action Scholar

Develop crucial skills vital to leading social change in a cohort committed to:

**Community.** Build knowledge and practice skills needed to make a difference in our local communities—collaboration, advocacy, deliberation and more.



**Innovation.** Use design thinking, lean start-up methodology and other strategies to create change via social ventures, triple bottom line organizations and technological innovation.

**Global Impact.** Develop international and intercultural perspectives and skills needed to be successful in our global cultures and economies, and to change the world for the better.

**Apply.** The application deadline for Drew Action Scholars is the same as the deadline for the admission application.

# Drew Action Scholars

## Your Homework Could Change The World

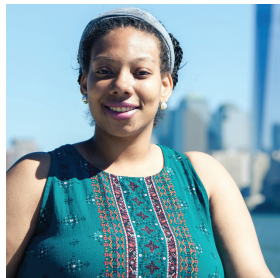
It's not enough to sit in a classroom. To truly understand the challenges of the real world, you need firsthand experience. Here's a sampling of how Drew's Action Scholars put their knowledge to work:



**Bahara Mohammadi '20** created a program to help girls in Afghanistan learn to code.



**Anthony Tagliaferro '20** interned with the chief financial officer of Madison, Drew's hometown.



**Virginia Leach '20** focused on access to education for youth from marginalized backgrounds and mentored students about attending college.

## The Community Is Your Classroom

Drew's focus on experiential learning through the new Launch program means plenty of opportunities for real-world experience. Connect your passion for action with your academic interests at Drew. Some examples are:

### Medical Geography

Investigate the intersections of health and place in order to understand the importance of local knowledge to public health and the relevance of geography to the health sciences, social sciences and policy. Students work with community partners whose missions are to protect and promote human health and well-being globally, nationally and locally.

### Refugees and Resettlement

Explore the many dimensions of the global refugee crisis, with a specific focus on resettlement. Working in partnership with the International Rescue Committee, the class engages with refugees from around the world recently resettled in New Jersey. Drew students serve as mentors to recently resettled youth, helping our new neighbors acquire academic skills and cultural competencies.

### Theatre in the Community: The Newark Collaboration

Drew students work with high school students from Newark, NJ public schools in a collaborative theatre-making enterprise, serving as mentors and sharing in the process of play development and performance.

### Applied Analysis of Social Entrepreneurship

Focus on hands-on approaches to social entrepreneurship, as well as obtaining the skills needed to successfully work for social change. Students participate in field trips, skills workshops and a group project working with a social change organization on a current challenge.

## Program details

### First-Year Program:

Enroll in classes designed for Drew Action Scholars.

Lead and participate in a public town hall focused on problems and solutions explored in your coursework.

### Second-Year Immersive Experiences and Convening:

Select a customized, approved option: Internships, community-based learning classes, study abroad trips, Innovation Action Lab.

Monthly convening: workshops or other activities for Drew Action Scholars only.

### Both Years Enjoy Special Experiential Learning Opportunities:

Engage with community organizations and local government.

Build prototypes and technology applications.

Pitch and advocate for new ventures and solutions.

Join field trips, networking and mentoring events.

## Application Deadlines for Admission and Scholarships

Early Decision: **November 1**  
 Early Action: **December 1**  
 Early Decision 2: **January 15**  
 Regular Decision: **February 1**

## Apply

**Drew University**  
**Office of College Admissions**  
 36 Madison Avenue  
 Madison, NJ 07940  
 cadm@drew.edu • 973.408.DREW  
[drew.edu/apply](http://drew.edu/apply)