

**ONCAMPUS
BOSTON**

**STUDY IN BOSTON
AND PROGRESS TO A
TOP U.S. UNIVERSITY**

**Start here.
Succeed anywhere.**

2019-2020

Achieve more

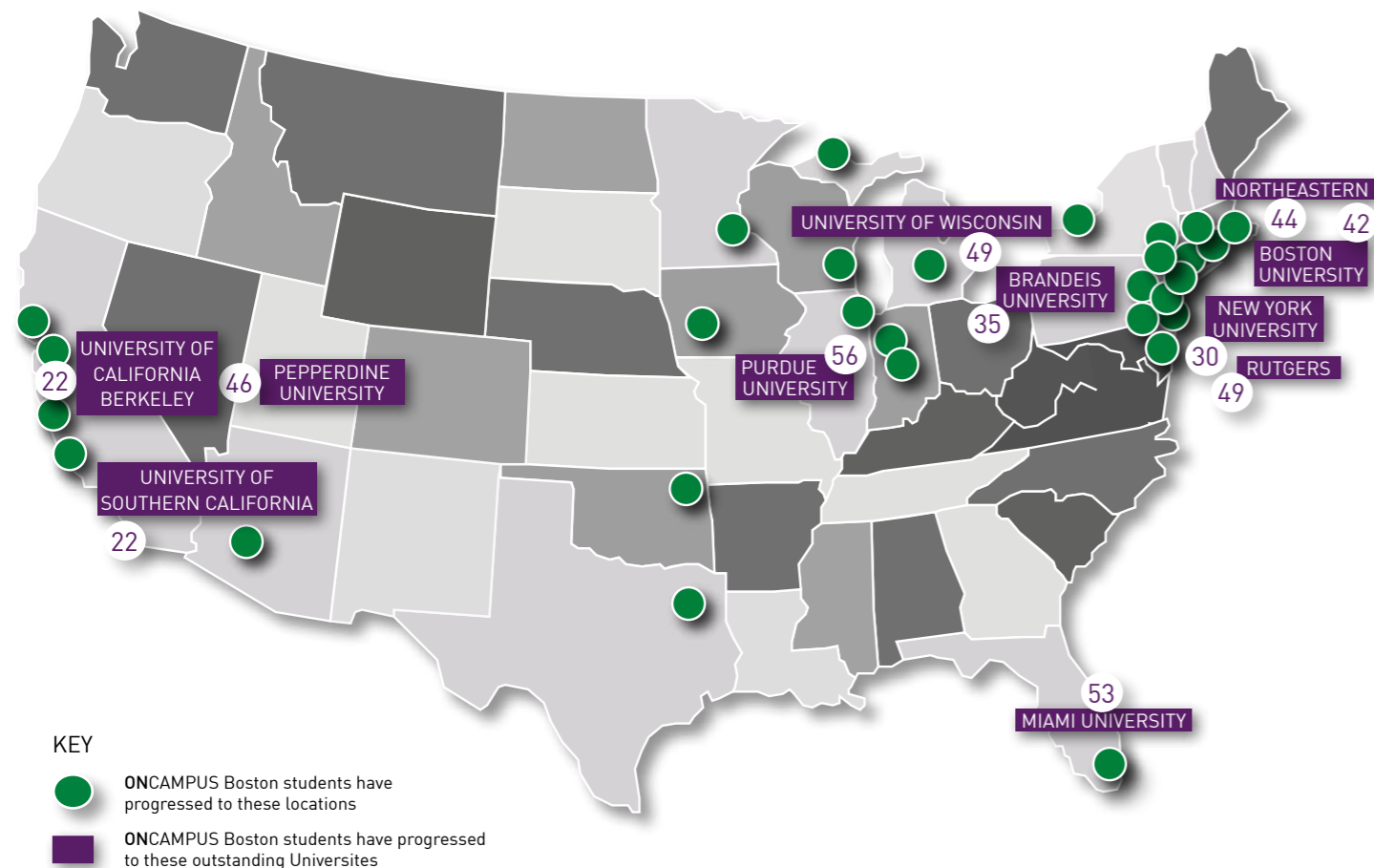




**Reaching
a top U.S.
university**

Track record of success

Our students successfully progress to degree programmes at top-ranked universities across the U.S.



NATIONALITY	MAJOR	PROGRESSED TO	NATIONAL RANKING*
South Korean	Business	University of California Berkeley	22 (Tied)
Indian	Civil Engineering	University of Southern California	22 (Tied)
Albanian	Applied Mathematics	New York University	30
Chinese	Computer Science	Brandeis University	35
Chinese	Mathematics	Boston University	42
Albanian	Business	Northeastern University	44
Chinese	Business	Pepperdine University	46
Chinese	Computer Science	University of Wisconsin	49
Chinese	Management	Rutgers University	49
Russian	Mechanical Engineering	University of Miami	53
Chinese	Hospitality	Purdue University	56
Chinese	Business	Stevens Institute of Technology	70
Korean	Communications	UMASS—Amherst	70
Taiwanese	Psychology	University of Minnesota	76

NATIONALITY	MAJOR	PROGRESSED TO	NATIONAL RANKING*
Malaysian	Business (Finance)	American University	78
Taiwanese	Interior Design	Baylor University	78
Taiwanese	Political Science	Stony Brook University	80
Taiwanese	Undecided	Michigan State University	85
Chinese	Marketing	University of San Diego	85
Korean	Business-Marketing	IU Bloomington	89
Kazakh	Business Administration	University of San Francisco	96
Colombian	Hospitality Management	Drexel University	102
Vietnamese	Engineering	Rochester Institute of Tech	102
Kazakh	Petroleum Engineering	University of Tulsa	106
Chinese	Marketing	University of the Pacific	106
Saudi Arabian	Business	Temple University	106
Vietnamese	Biochemistry	New Jersey Institute of Tech	106
Chinese	Industrial Design	Arizona State University	115
Chinese	Aerospace Engineering	Iowa State University	119
Taiwanese	Mechanical Engineering	Michigan Tech University	136

* U.S. News & World Report 2019

OVER 32 DIFFERENT NATIONALITIES HAVE STUDIED AT ONCAMPUS BOSTON

“Before coming to ONCAMPUS Boston, I was worried that I wouldn’t be able to go to my first choice school, but after coming here I feel like I have many more opportunities and experiences than before.”

PRANEETHA · INDIAN · ENGINEERING, UNIVERSITY OF SOUTHERN CALIFORNIA, #22 NATIONALLY RANKED

ONCAMPUS BOSTON HAS SENT STUDENTS TO OVER 77 DIFFERENT COLLEGES & UNIVERSITIES!

UNIVERSITY OF WISCONSIN



OVER 1/3

OF ALL COLLEGE STUDENTS TRANSFER SCHOOLS AT LEAST ONCE DURING THEIR DEGREE
(National Student Clearinghouse Research Center, 2017)

BOSTON UNIVERSITY



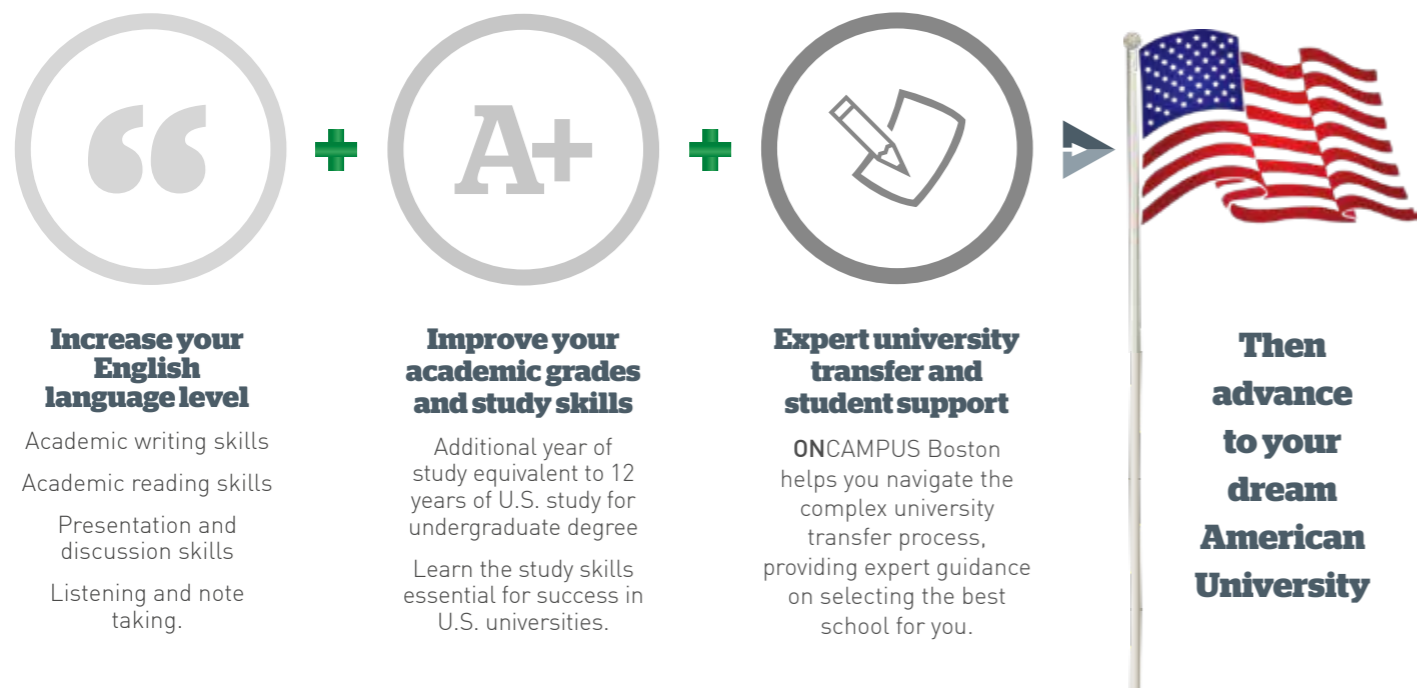
UNIVERSITY OF CALIFORNIA BERKELEY



How does ONCAMPUS Boston Work?

Our programmes at **ONCAMPUS Boston** are designed for international students to succeed – academically, personally, and professionally on a 1-year university transfer program that enables you to earn college credit while gaining a deeper understanding of the U.S., its education system, and which options are best for you.

Your first step to U.S. University Success



FULFILL YOUR AMBITION FOR A TRULY PRESTIGIOUS DEGREE

Our staff will help you apply and transfer to top U.S. colleges and universities.

PART OF THE UNIVERSITY FROM DAY ONE

Study in America's #1 college town and live on a university campus alongside American students with full access to all facilities and resources (e.g. library, gym, dining facilities).

COMPREHENSIVE STUDY PROGRAM

In addition to instruction in writing and speaking English, you will take the same classes as other Curry College students, from the very same Curry faculty, and earn 24-30 credits upon completion, equivalent to Year 1 of University.

QUALITY ASSURED

Curry College is accredited by the New England Commission of Higher Education (NECHE). NECHE is the regional accreditation agency for colleges and universities in the six New England states: Connecticut, Maine, Massachusetts, New Hampshire, Rhode Island, and Vermont.

YOUR ROUTE TO A UNIVERSITY DEGREE

COMPLETE YOUR UNDERGRADUATE DEGREE AT YOUR DREAM SCHOOL

YEAR 2-4

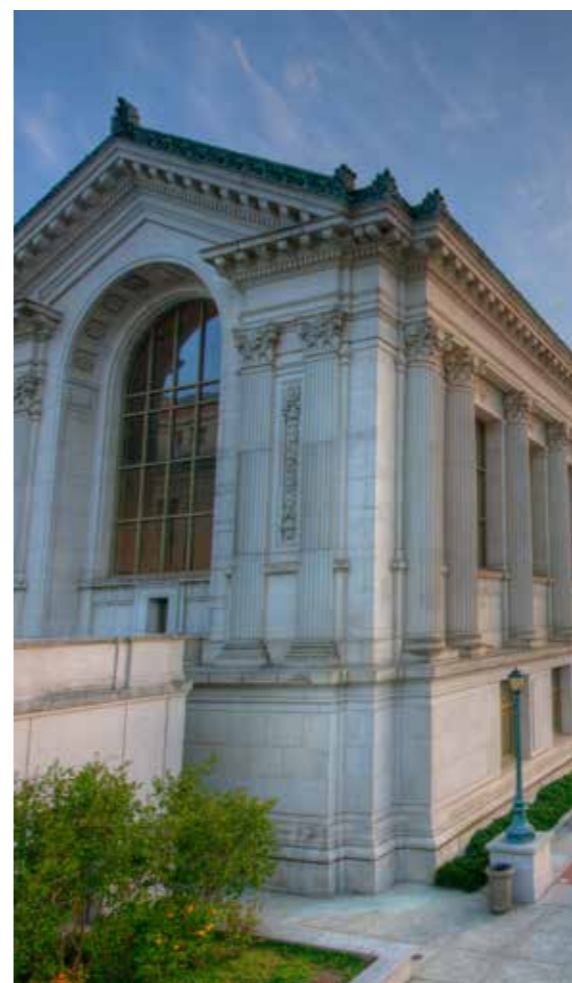


INTERNATIONAL FRESHMAN YEAR

4.5 IELTS, or TOEFL 50 iBT
22.5 hours of classroom-based study time a week
Transfer guidance
August, January, May

DECLARING A FIELD OF STUDY AT A U.S. COLLEGE OR UNIVERSITY

ONCAMPUS Boston provides the support and guidance to help you explore different fields of study and career paths. While you are free to choose the area of study you wish to focus on (this is referred to in the U.S. as your "major"), you will also be required to complete a number of general education courses which will help you learn how to think critically, research properly, and communicate effectively. At most U.S. schools you can complete up to two years of study before you need to declare your major.



Transfer Advising & Student Support

We prepare you to succeed at any U.S. college or university, and we help you determine, and transfer to, the perfect school for you, whether that's Curry College or another US university. We work with a number of excellent partner universities, but you are free to explore transferring to any of the more than 4,000 U.S. universities and colleges.



ONCAMPUS Boston's University Success Seminar supports you through every step of the university transfer process. ONCAMPUS Boston also specializes in giving students individual attention through academic and transfer advising.

Workshop
(1 hour/wk)
You will explore how your interests relate to different majors and to possible careers. You will complete college research to discover best-fit universities. Then you will bring your self-assessment and research together by writing a college transfer essay with personal guidance from experienced writing instructors.

Seminar
(1 1/2 hours/wk)
This group seminar gives you an introduction to higher education in the United States. There is also time set aside for college visits, partner college fairs, and individual interviews with senior college admissions officers.

Optional SAT/ACT preparation
Although our partner universities do not require SAT or ACT results, some U.S. universities require these exam scores as part of your application. ONCAMPUS Boston offers a 20-hour intensive SAT/ACT preparation course to help students succeed on these standardized tests. Completed in one semester, this course comes at a minimal additional cost and prepares students to take the exam which is offered at a number of nearby locations.



Transfer lab
(1 hour/wk)
The ONCAMPUS staff leads you through the transfer application process step-by-step. You will get practical experience completing every component of the application together in a computer lab – including listing activities, ordering official college transcripts, assigning faculty recommendations, and requesting a college official's report.

Drop-in office hours
You are also free to stop in and talk with ONCAMPUS Boston's university advisor during weekly office hours.

Academic Advising
You will attend one-on-one academic and transfer advising meetings during your two semesters in the program. ONCAMPUS Boston's holistic approach to advising gives you the support you need to succeed in classes, in extra-curricular activities, in the Curry community, and in understanding your options for your sophomore year and beyond.



ONCAMPUS Boston's University Transfer Advising 4-step process:



Which university is the best for you?
ONCAMPUS Boston provides:
A 4-step university advising process
College visits
College fairs
Application support
Guidance on final decision



**Studying
in Boston**

BOSTON Study in one of the learning capitals of the world



Harvard University



MIT



Boston is the **8th** best city in the world in terms of **QUALITY OF LIFE**, and the **BEST** in the U.S.
Deutsche Bank, 2017



Boston University



Tufts University



Brandeis University



Northeastern University

- Boasting two of the world's top universities (Harvard University and MIT)
- Five more universities in the U.S.'s top 100 Boston College, Boston University, Tufts University, Northeastern University and Brandeis University.
- 50 colleges and universities in Boston that attract more than 250,000 students, the entire city feels like a college campus.



BOSTON a city with culture, sports and learning



THE NEW ENGLAND PATRIOTS ARE THE AMERICAN FOOTBALL TEAM BASED IN BOSTON



BOSTON CELTICS ARE A BASKETBALL TEAM



BOSTON BRUINS ARE AN ICE HOCKEY TEAM



FENWAY PARK IS HOME TO THE RED SOX, THE CITY'S AMERICAN LEAGUE BASEBALL TEAM



OVER 2,100 parks



OVER 50 museums



OVER 2,500 restaurants



OVER 200 libraries



OVER 40 cinemas

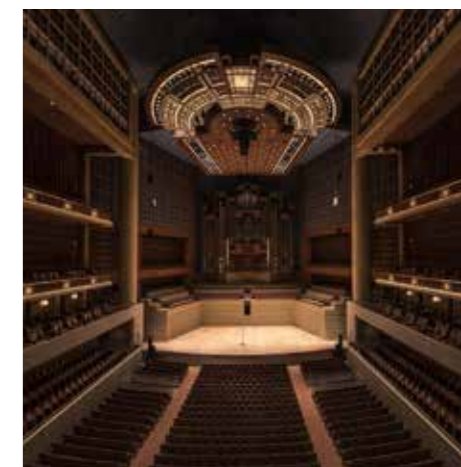
Things to do in Boston



BEACON HILL



NEW ENGLAND AQUARIUM



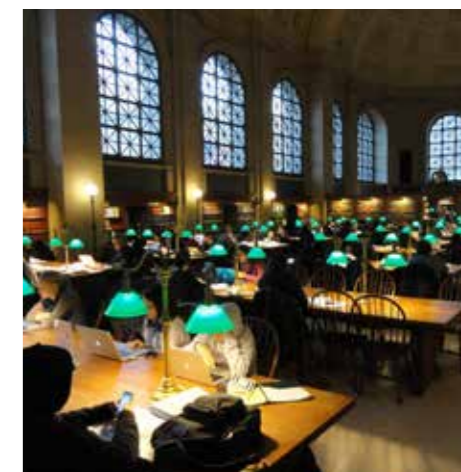
BOSTON SYMPHONY HALL



USS CONSTITUTION



GEORGE WASHINGTON STATUE



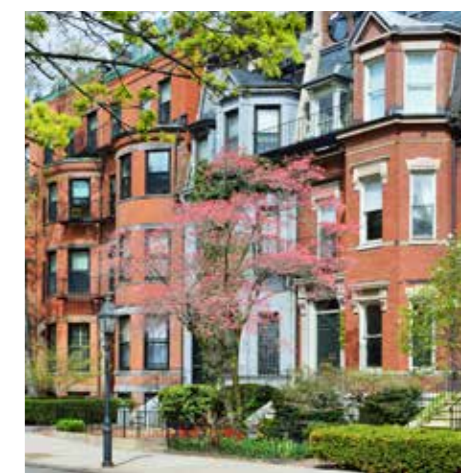
BOSTON PUBLIC LIBRARY



FANEUIL HALL



MUSEUM OF SCIENCE



BACK BAY

Safe and welcoming campus close to the heart of Boston



CURRY COLLEGE



Curry College was founded in 1879 and has a rich history as a forward-looking institution that emphasizes individualized education, academic preparation, and personal development. **Recognized as a world-leading institution for individualized education**, Curry continuously focuses on the particular learning needs of each student.

HIGHLIGHTS

7 miles
from Downtown Boston

20 minutes
by car to
Boston



25 minutes by bus to Downtown Boston



Curry College is situated on a 131 acre wooded campus

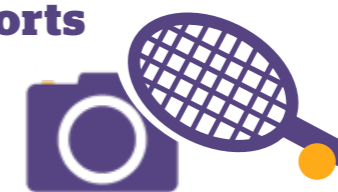


16,000 +
ALUMNI

13:1
student-faculty ratio



Over 40 student-run clubs, organizations and sports teams



Curry classes accommodate the opportunity for high-quality daytime work and internships for college credits.



Education at Curry College

Curry is highly regarded for its broad liberal arts curriculum as well as programs in exciting professional fields. With exceptional facilities, including state-of-the-art labs and study spaces, your education at Curry will be individualised, experiential and at the leading edge of 21st Century learning.



Over **86** Majors, Minors, and Concentrations in the following subject areas:

- Business, Economics, and Informatics
- Science
- Communication
- English
- Social Science, History, and Philosophy



Guaranteed progression

Successfully pass your International Freshman Year, and get the freedom to choose to progress to Year 2 with a wide range of majors.

Degrees you can progress to:

Curry College prepares students to succeed in rewarding careers around the world.

Our newest majors include:

- Accounting
- Biochemistry
- Forensic Science
- Software Development

Internships are a key factor in job marketability after graduation, and the Internship Program at Curry offers students the opportunity to explore a variety of career paths by learning about their interests, skills, strengths, and values while acquiring college credits. Curry produces graduates who are prepared to engage in a complex and changing global world.

SUGGESTED TIMETABLE

Required Courses	
Semester 1	Semester 2
Academic Writing Process <i>or</i> Reading, Writing, Research I <i>and</i> College level Math	Reading, Writing, Research I <i>or</i> Reading, Writing, Research II <i>and</i> Fundamentals of Communication
Major Courses, General Education Courses, or Electives	
Semester 1 (CHOOSE 2-3)	Semester 2 (CHOOSE 2-3)
Introduction to Business	Human Resource Management
Electives and General Education: Discovering Boston Introduction to Sociology Arts Immersion Introduction to Psychology Music of the World The Sciences	
Additional Support Classes	
English for Academic Purposes	University Success Class

Your home at Curry College

You can choose from 19 amazing residence halls. Below are just two of the options:

State House is a replica of the Massachusetts State House. This traditional residence hall is four levels and houses approximately 84 new students and a Resident Assistant on each floor. Floors are divided by gender. State House is situated next to the Curry radio station and the academic quad on the north side of campus.



ACCOMMODATIONS



Main House accommodates 69 residents, including three Resident Assistants. The building is all about character and offers a variety of living arrangements for both male and female students with options from singles to quads. Main House is attached to the Gertrude Webb Learning Center, which makes an easy commute for students who utilize the services of the Program for Advancement of Learning.

Curry believes that hard-working college students should be rewarded with a dining service that makes eating on campus pleasing, healthy, and social.

DINING OPTIONS

STARBUCKS

THE MARKETPLACE

SMART MARKET

LATE NIGHT DINING

KENNEDY CAFÉ



DINING



CURRY COLLEGE





About
**ONCAMPUS
BOSTON**

International Freshman Year

OVERVIEW PROGRAM DETAILS

LENGTH OF PROGRAM

2 semesters

MINIMUM AGE:

17

TUITION FEES:

\$38,950

ENGLISH LEVEL:

4.5 IELTS, or TOEFL 50 iBT

HOURS PER WEEK:

Up to 22.5

OTHER FEES INCLUDE:

Housing and Dining plan, Health Insurance, Comprehensive Campus Fees, Registration

ACADEMIC REQUIREMENTS:

Admission is subject to good high school grades

START DATES:

August, January and May

PROGRAM TERM DATES 2019/2020

Program dates	Fall 2019	Spring 2020	Summer 2020
Move in	August 19	January 14	May 12
Orientation	August 20	January 15	May 13

Scholarships are available, please contact us for more details.

PROGRAM FEES*

Annual fees (2 semesters)

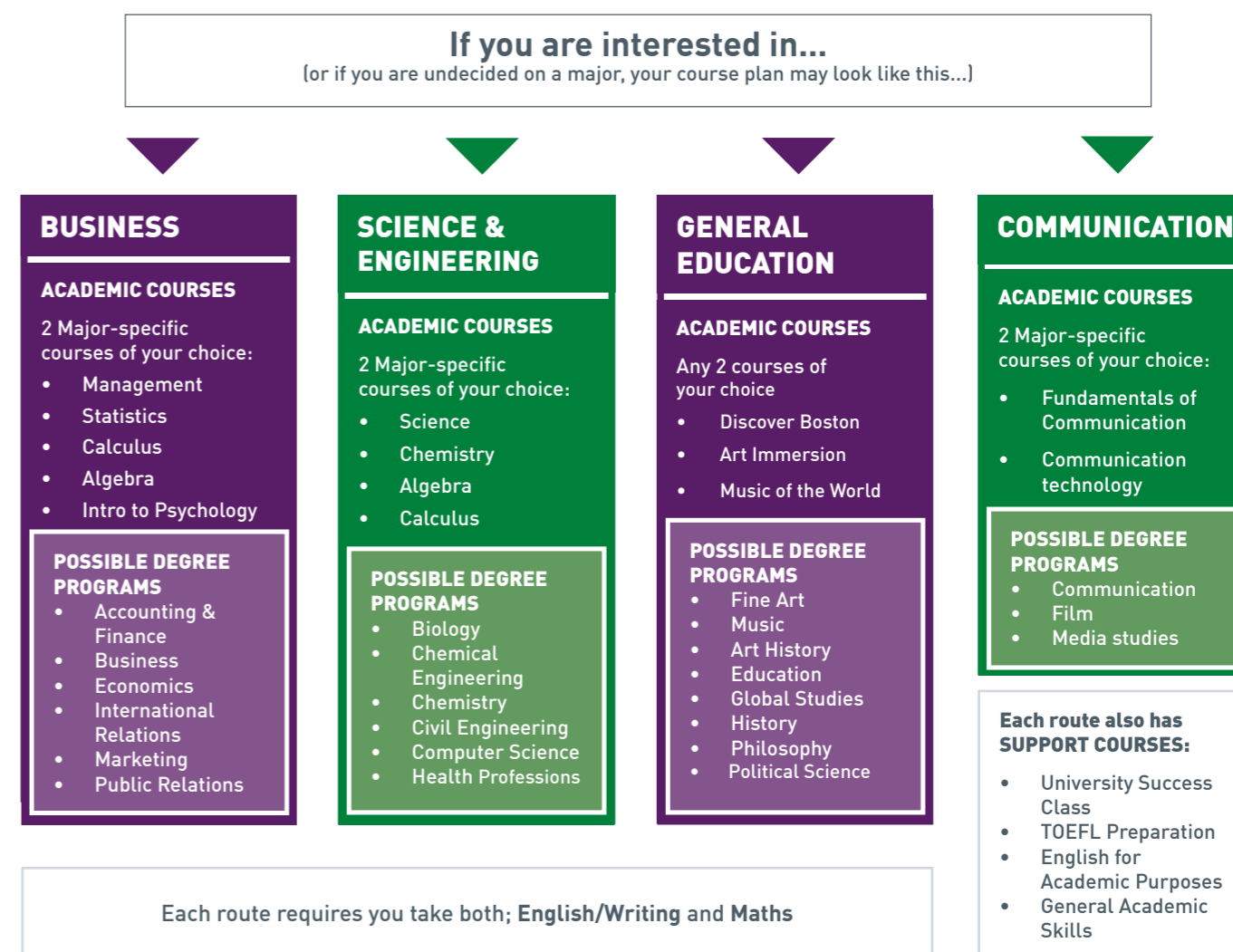
Tuition	\$ 38,950
Registration fee	\$ 300
Housing and dining	\$ 18,470
Health insurance [†]	\$ 2,986
Comprehensive campus fees	\$ 1,920
New student orientation fee	\$ 360
Academic supplies	\$880 (suggested)**

* At time of printing, these fees reflect the 2019-2020 fees. For most up-to-date fee details, please check the ONCAMPUS Boston website. Tuition fees include up to 32 credits, and registration for a TOEFL examination. All programs are subject to the listed \$300 non-refundable registration fee and a \$2200 refundable deposit. **This is a suggested estimated cost, it is not a mandatory fee.

[†] Health insurance fees are estimate and are subject to change.

Your route to a university The choice is yours

Our program allows you to take core classes in Critical Reading and Writing and general education subjects while also providing you with the flexibility to choose elective classes. Whether you already know your field of study or are still undecided, our experienced staff will help you with the course selection process to start you on the right path to your degree. Here are a few examples of possible course plans:



Up to
22.5 hours
of classroom-based
study time a week



Practice
the full range of
assessment methods you
will use at university



Expert guidance and
Support
to progress to top
U.S. universities



A personal
Tutor
and subject pathway
leaders will support you

NEXT steps

1

APPLY

Complete the ONCAMPUS Boston Application Form and send to our Admissions team, preferably along with electronic copies of:

- Academic Transcripts (along with certified translations if not in English)
- Copy of passport information page
- Evidence of English language level

2

RECEIVE OFFER

Within 2 working days, you will receive a response either with a conditional offer, a request for more information, or a notification that the application is under further review. Conditional offers will note any missing required documents.

- Send the completed Immigration Check Form and a copy of any previous or current visas and I-20 documents electronically to Admissions*.
- Collect proof of funds as detailed in the Certification of Finance Form with any additional required forms and send electronically to Admissions.
- Fulfill any remaining conditions noted on your conditional offer letter.
- Pay the registration fee (\$300) and the deposit (\$2,200).

*These forms are required, and an acceptance letter will not be issued unless they are completed.

3

ACCEPTANCE LETTER AND I-20

- Once you meet all the conditions of acceptance, a draft Acceptance Letter will be issued within two working days.
- Review the draft Acceptance Letter to make sure all information is correct and accurate and confirm the shipping address and recipient to which the original of the I-20 document should be sent.
- Once any amendments have been sent to the CEG Admissions team or the Acceptance Letter is confirmed with them, the student will be emailed an electronic copy of the I-20 within one week which will be followed by the original document in the mail.
- Please note that I-20s cannot be issued more than four months before the start of your course. If everything is ready before then, we will issue your I-20 as soon as the four month deadline is passed.

4

F-1 STUDENT VISA APPLICATION

- Once you have received an electronic copy of your I-20, book a visa appointment at your local US Embassy and collect all the required documents.
- Follow the instructions from your local US Embassy website to start your visa application.
- Students should ensure they are prepared to answer questions relating to their chosen study program in the USA, their own educational background, career intentions and why they have chosen this course.
- Follow the instructions from your local US Embassy website to start your visa application your visa interview.

5

ARRIVAL AT ONCAMPUS BOSTON

- A pre-arrival Handbook, which includes important information for your course of study, and medical forms will be sent along with the electronic copy of the I-20 and will help prepare students for their arrival in Boston.
- Students must provide arrival details to Admissions and should arrive by the day before the program start date.
- The first few days of the program are dedicated to an orientation delivered by both the ONCAMPUS Boston & Curry College teams.

Should your application be successful and you are admitted to our program, your next step will be to apply for a student visa. As part of your visa application process, you will likely have to attend an in person visa interview. Below are some tips on how to prepare for this.

Do attend, Do answer, Do think, Do speak English, Do ask

Documents to bring In general, students are asked to provide the following documentation:

- Original I-20
- Proof of payment of SEVIS fee
- Completed DS-160 form (Non-immigrant visa application)
- Acceptance Letter
- Passport
- Academic transcripts (with translations)
- Financial evidence used for the I-20
- Passport-sized photograph

QUESTION TYPE: General Information about you, your education, your choice to study in the U.S.

Tip: Show that you are a genuine student looking to further your education.

Make it clear that you plan to return to your home country – give reasons for returning to your home country that are stronger than those for remaining in the USA.

Please note: we cannot guarantee a successful outcome to your visa interview. These points are only meant to advise you on what you can expect during your visa interview.

ONCAMPUS BOSTON APPLICATION FORM

Apply ONLINE at www.oncampus.global/apply or return this form to: Admissions Office, ONCAMPUS, Kett House, Station Road, Cambridge, CB1 2JH, United Kingdom
Tel: +44 (0)1223 345698 Fax: +44 (0)1223 346181 Email: admissions@oncampus.global

Please write neatly using BLOCK CAPITALS in black ink or typescript.

Incomplete application forms submitted without ALL the supporting documents will delay the decision process.

1. Use of agent (if none, please proceed to section 2)

Please complete the details below and see section 14 of the Conditions of Enrolment which can be found at www.oncampus.global/terms

Representative name	Branch
---------------------	--------

2. Personal details (must be completed)

Title (Mr/Mrs/Miss/Ms etc)	
----------------------------	--

First name(s)	Family name
---------------	-------------

Date of birth (dd/mm/yy)	
--------------------------	--

Nationality (as passport)	Gender
---------------------------	--------

Home address	Main Contact (if different)
--------------	-----------------------------

Postcode	Postcode
----------	----------

Country	Country
---------	---------

Cell (incl. country code)	Cell (incl. country code)
---------------------------	---------------------------

Telephone (incl. country code)	Telephone (incl. country code)
--------------------------------	--------------------------------

Student email	
---------------	--

3. Disability/special needs

If you have a disability, impairment or medical condition which may affect your studies please provide details below.

I consent to ONCAMPUS processing my/the student's disability, impairment or medical condition information provided as part of this application.

Signature of student:	Signature of parent/legal guardian:
-----------------------	-------------------------------------

You have the right to withdraw your consent at any time by emailing the ONCAMPUS data protection officer on DPO@ceg-uk.com

4. Criminal convictions

Do you have any criminal convictions? Yes No (Your enquiry cannot be processed if you do not complete this section)

5. Program details

Date you want to start International Freshman Year August January May Year 2019 2020

Have you studied in the U.S. before? Yes No

ONCAMPUS BOSTON APPLICATION FORM

6. How did you hear about us? (please tick)

Agent Exhibition Family Internet Other (please specify)

7. Checklist

Before sending the application, please ensure you have:

- Completed the application form in full and signed it
- Enclosed a copy of your passport and copies of any previous visas
- Enclosed copies of transcripts and/or certificates for all your relevant qualifications (with certified English translated copies if in any other language)
- Provided an explanation of any gaps in your academic record e.g. Resume (if applicable)
- An acceptable evidence of English proficiency, equivalent to IELTS 4.5. For list of acceptable proof of English proficiency please refer to website: <https://www.oncampus.global/uk/visa-information/secure-english-language-tests-selt-.htm>

8. Declaration

I declare that I am applying to ONCAMPUS as a genuine student and that the information and supporting evidence and academic documents I have provided are true copies. I understand that by signing this declaration I have read, understood and agreed to the terms and conditions and fees of study at ONCAMPUS Boston as outlined on the ONCAMPUS website www.oncampus.global/terms and agree to comply with DHS regulations at the time of application and during my course of study.

If you do not have access to the website or would like a written copy of the conditions of enrolment, you can request these from

ONCAMPUS Central Admissions at admissions@oncampus.global

We would like to send you information about services relevant to ONCAMPUS students and your stay in the US if you are happy to receive such information.

I am happy to receive information about ONCAMPUS products and offers by:

Email Telephone Text message Social Messaging Social Media Fax

We will keep this information secure at all times and we will share it within CEG as necessary to run our business, deliver your education and ensure your safety. We will also release this information where it is legally required or lawful to do so, or in the event of a medical emergency if it is necessary to protect your health or the health of others. We will provide reports to your agent, parents or guardian on your progress, and also where necessary with our academic partners such as universities. Some of our data transfers may transfer your data to other countries.

Do you consent to your personal data being stored, processed and released by CEG in this way?

Do you consent to your sensitive personal data including health, welfare, nationality, ethnicity, religious and other data being stored, processed and released in this way?

Do you consent to the reasonable use of your details and academic achievement to be used for marketing purposes?



Signature of applicant	Date
Parent or guardian signature (if applicant is not the fee payer or is under 18)	Date

If you wish to stop receiving marketing communications at any time then please click the unsubscribe option in any email received or alternatively please email cegmarketing@ceg-uk.com. For further information on how ONCAMPUS processes your personal data please see our Privacy Policy <http://www.cambridgeeducationgroup.com/about-us/privacy-policy.htm>

ONCAMPUS BOSTON



Follow our latest news

-  facebook.com/oncampusglobal
-  instagram.com/oncampus_global
-  twitter.com/oncampusglobal

HEAD OFFICE

Cambridge Education Group
Kett House, Station Road, Cambridge,
CB1 2JH, United Kingdom
Telephone: +44 (0)1223 345698
Email: admissions@oncampus.global
Web: www.oncampus.global
Fax: 44 (0)1223 346181

CENTRE ADDRESS

Curry College
1071 Blue Hill Ave, Milton
Boston
MA 02186

Information in this brochure is correct at time of issue in February 2019. ONCAMPUS and the University Partners reserve the right to alter, reschedule or close courses which do not remain viable; students will be informed.

ONCAMPUS
BOSTON

Start here.
Succeed anywhere.



UNIVERSITIES
— ★ **USA** ★ —

Achieve more. Experience more.