

Contact us



Email/Phone/Fax

To find out more about studying at the University of Greenwich, please visit greenwich.ac.uk

UK students: Recruitment team

Tel: 020 8331 9000 Fax: 020 8331 8145
Email: courseinfo@gre.ac.uk

International/EU students: International Office

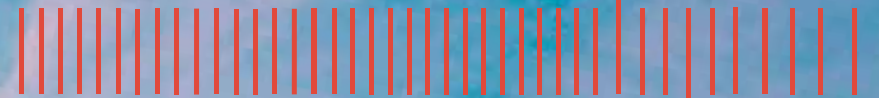
Tel: +44 20 8331 8136 Fax: +44 20 8331 8625
Email: international@gre.ac.uk

Avery Hill Greenwich Medway

This document is available in other formats on request

University of Greenwich, a charity and company limited by guarantee, registered in England (reg. no. 986729).
Registered office: Old Royal Naval College, Park Row, Greenwich, London SE10 9LS

D21267-17



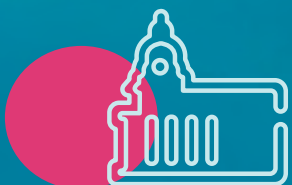
2019 2020

UNDERGRADUATE
PROSPECTUS

greenwich.ac.uk

Need to know

A quick guide to what the university has to offer, with some interesting facts and stats.



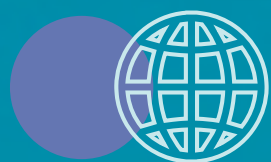
A GREAT PLACE TO STUDY

London is ranked as one of the best cities in the world for students¹



3 friendly campuses, including a World Heritage Site

80 movies filmed at the university



1st class environment rating

by the People & Planet University League for our environmental and ethical performance



INSPIRED TEACHING AND RESEARCH

Silver rating in the Teaching Excellence Framework



9 Times Higher Education Awards

4 Queen's Anniversary Prizes for Higher & Further Education

'Outstanding'

Ofsted rating for quality of training in primary education



A LARGE, DIVERSE STUDENT COMMUNITY

37,000+

students in total (including those studying abroad at our partner colleges)

International students from

140+ countries

Full-time UK-based students

42% 18-21 year olds

58% 21 or over



FIRST-RATE STUDENT EXPERIENCE

£250,000

in student scholarships available for students

99.8%

of current or former students would recommend the university²



TOP FACILITIES

£80 million+

invested in laboratories, teaching spaces and student facilities in the last five years

£25 million

spent on new computing facilities and teaching space due to open in 2018

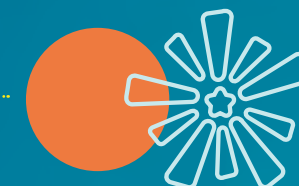
Almost half a million

books, journals, periodicals and e-resources



1,343

study spaces



A BRIGHT FUTURE

Over 200 undergraduate

courses, over a quarter of which are accredited by the relevant professional body



4-star rating

for employment opportunities³



91%

of students in employment or further study 6 months after graduation⁴

¹ www.telegraph.co.uk ^{2,3} University Compare

⁴ The figure is based on UK-domiciled full-time undergraduate university leavers in 2015-16 who are in work, further study or seeking work

Welcome



Professor David Maguire
Vice-Chancellor, University of Greenwich

Thank you for taking a copy of our Undergraduate Prospectus for 2019–20. I am delighted that you're considering joining our vibrant community at the University of Greenwich. Within these pages you'll find out why studying with us can be so rewarding and how we will help you realise your ambitions and achieve extraordinary things.

Whichever degree you're considering, our dedicated team of academics and professionals will be with you every step of the way helping you to reach your full potential. The high standards we set ourselves is reflected in our courses, each of which is designed to stretch and challenge you and transform the way you see the world. Many courses benefit from the input of employers, who help shape module content to ensure that it is appropriate to the workplace.

Today's ever-changing world demands constant innovation and an agile approach towards the technological, business and political challenges we face. We foster new ideas and new ways of working and instill in our students a passion for embracing challenges with creativity and confidence, as well as a limitless thirst for knowledge.

It is precisely this sort of commitment that earned us a silver rating in the inaugural Teaching Excellence Framework, a government scheme that recognises high quality teaching in higher education. What this means for you is that you will be part of a supportive and talented community where we strive for excellence and inspire each other.

While you are a student here, you will benefit from access to first-class facilities on three

beautiful campuses, two in the Royal Borough of Greenwich and one in Medway, Kent. Since 2014, we have opened a new campus library and hall of residence in Greenwich and unveiled improved sports and social facilities at our Avery Hill and Medway Campuses.

We are relentlessly ambitious for our students and are extremely proud of their achievements. By joining us, you will follow in the footsteps of graduates who include winners of a Nobel Prize, an Oscar and an Olympic gold medal. Many of our former students are influential leaders in fields such as business, charity, education and politics, and are committed to using their knowledge to improve the world around them.

Work placement and internship opportunities are an integral part of many of our courses, so that when you graduate you have the right skills, knowledge and experience to start your career. We also have strong connections with local and national businesses and organisations.

Change starts right here on these pages. I very much hope you find a course that sparks your curiosity and spurs you on to discover more about it, and I look forward to welcoming you to the University of Greenwich in the new academic year.

A handwritten signature in black ink that reads "David Maguire". The signature is written in a cursive, slightly slanted style.

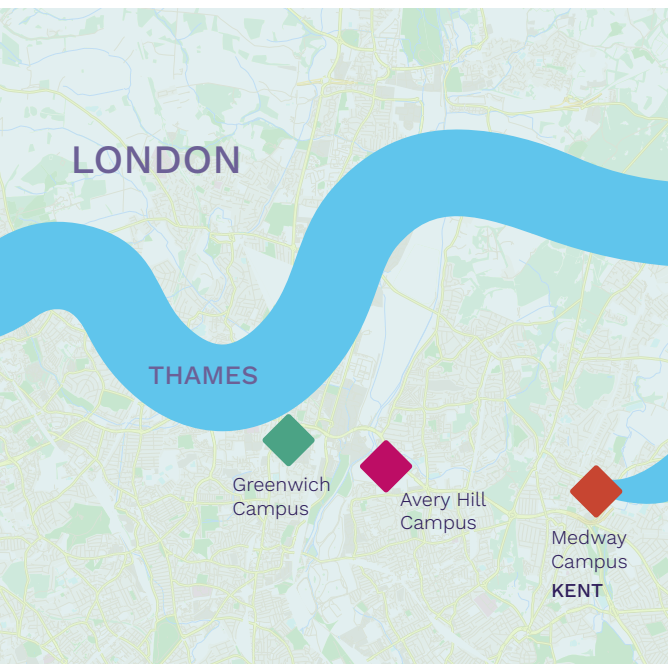
Contents

Guide to the university

Our campuses	8
Accommodation	10
Students' Union	16
Sport and fitness	18
Support	20
Your career	22
Alumni	24
Open Days	26
Our courses	28
Course index	30
How to apply	34

Our campuses

We want you to get the best out of your time at university, and where you study can be key to your student experience. We offer three contrasting campuses in south-east London and Kent, each with excellent facilities for work and play.



Avery Hill

On the edge of parkland and a short walk from Eltham High Street, our Avery Hill Campus in south-east London has excellent teaching and sporting facilities. A recent £14-million investment has added two new buildings, four clinical skills laboratories and two floodlit, all-weather sport pitches. It is also home to the Student Village, where most of our students live. The complex includes a canteen/café, a lively student bar, as well as entertainment facilities, and there's a free intercampus bus to Greenwich.



Greenwich

Greenwich is our largest campus and its historic buildings on the River Thames are often used as film sets, so don't be surprised if you see a few famous faces around the campus. The recently built £80-million Stockwell Street building houses state-of-the-art learning resources, including a high-tech library, film and TV studios, and one of Europe's largest teaching and learning green roof landscapes. A £25-million conversion of the Dreadnought Building, due for completion in autumn 2018, will create even more teaching and social spaces. A free intercampus bus service runs to and from Avery Hill.



Medway

Our Medway Campus in Chatham Maritime, Kent, has teaching and living spaces within a few minutes' walk from each other. There are industry standard laboratories in science, engineering, pharmacy and natural resources, as well as a huge library. A new hangout for students is the Deep End, a £4.6-million social and entertainment space, which also has a quiet area where students can read or work on laptops. The campus is about 30 miles from central London and has a dedicated university bus service to Avery Hill and Greenwich Campuses, for which a fee is payable.

Accommodation

Our students get to experience the best of campus and city living. While the attractions of London are just a short tube or train ride away from our Greenwich and Avery Hill Campuses, we are one of the few London universities to provide on-campus accommodation. Just to the south-east of London in the county of Kent is our Medway Campus, where everything you need is literally on your doorstep – lecture theatres and laboratories are just a few minutes' walk from student accommodation.

Living in halls of residence is a great way to meet people and make the most of student life, which is why we offer almost all new students an accommodation guarantee.

There are around 2,400 places in quality accommodation on or near our campuses, so you will be part of a tight-knit student community. All of our halls have single study-bedrooms with shared kitchen facilities and most have en-suite bathrooms. Some halls also offer a limited number of two-bedroom and self-contained studio-style flats.



Avery Hill Student Village

Located approximately 9 kilometres (6 miles) from Greenwich Campus, Avery Hill Student Village is home to over 1,200 students studying at Avery Hill and Greenwich. On-site facilities include a café, canteen, shop, launderette, gym (annual fee applies), bicycle parking, and car parking (annual fee applies). Sparrows Farm Students' Union bar is a few minutes' walk away from the Village, just past the all-weather 3G sports pitches which opened in 2017.

Aragon, Boleyn and Seymour Courts offer around 550 single study bedrooms in flats with shared kitchen and bathroom facilities, mostly for four or five students, but some maisonettes have six or seven rooms.

In Cleves, Howard and Parr there are around 650 single study bedrooms with en-suite shower/toilet facilities and shared kitchens. The majority of flats are shared by six students, but Tudor Court flats offer space for nine in each.



Greenwich Campus accommodation

There are four halls of residence at Greenwich Campus. All are within easy walking distance of the university and the many attractions of Greenwich town centre. They are also close to bus and train routes that will take you into central London.

Cutty Sark Hall offers 231 single study bedrooms with en-suite shower/toilet facilities in shared self-catering flats. Daniel Defoe Hall has 358 en-suite study bedrooms

in flat shares, studios and two-bedroom flats. Devonport House is reserved for postgraduate students and those aged 25 years old or over. McMillan Student Village has a range of study bedrooms with en-suite shower/toilet facilities and a shared kitchen.

Students studying at Greenwich Campus who prefer a more student village feel live at Avery Hill, which is a 30-minute ride away on our free intercampus bus.



Medway Campus halls of residence

Medway Campus offers on-campus accommodation just moments away from the library and lecture theatres/laboratories where you will be studying. The five halls (Adelaide, Forte, Merlin, Sunne and Wolfe) provide a total of 350 study bedrooms with en-suite shower/toilet facilities in flats with shared kitchens. Just across the road from the campus is a dockside retail park, which has a nine-screen cinema, bars, restaurants and outlet stores. The campus also has a dedicated university bus service to our two London sites.

Meet: Robert Borisov

Resident Assistant

“„

I'm lucky to have one of the best jobs on campus. As a resident assistant (RA) I help out students living in accommodation at Avery Hill Student Village. I'm one of 12 RAs on site and one of us is always on call, which means there's always someone just a phone call away to provide you with advice and support should you need it.

We also organise fun stuff around campus. This can be anything from film nights to meet and greets at the start of term to help you settle in. I've had an amazing experience living in halls and want you to love it as much as I do. My advice is to be social, be yourself and find the people that you have a vibe with. And remember, an RA is always on hand to provide a sympathetic ear and practical help.



Students' Union



The Students' Union (SU) is a democratic organisation run by students for students, and when you enrol at the university you automatically become a member. As well as representing your rights and interests, we are at the heart of university life. There are almost 100 student clubs and societies offering tons of activities. You can play a sport, perform, campaign or volunteer for a cause. You can even start your own group or get involved in the union by serving on a committee or running for election. The SU also provides support and advice to help you have an amazing student experience at Greenwich.

Meet: Meike Imberg

Greenwich SU President

“

Hey guys, I am Meike, President of the Students' Union here at Greenwich. I graduated with a BSc Hons in sociology and psychology and got elected in 2017, and being SU president is now my full-time job. I still remember how excited I was when I started uni three years ago and I can imagine that all of you are starting to feel the same. It can be a lot to take in when you get here, but I promise that you will have an amazing time!

So what is the SU? We exist for two reasons: 1. Empowering you to change the world. 2. Making sure you have a great time at Greenwich!

Everything we do and everything we offer is solely to achieve those two goals. Whether it's representing your academic interests, making sure you have a great time at our venues, using different social media channels to keep you updated on events, providing you with part-time jobs or offering advice in a lot of areas such as academic and finance support – we are here FOR YOU!

Our students are #ProudToBeGRE (Proud to be Greenwich) and I am sure you will be as well once you arrive!



Sport and fitness

Sport plays a major part of university life here at Greenwich. So, whether you're a sporty type or just after a way to keep fit and have fun, you will find plenty of activities and team sports to get involved in.

Maybe you'll decide to join one of the many sports clubs our Students' Union offers – from football, rugby, hockey and lacrosse to archery, cheerleading, equestrian sport and Ultimate Frisbee, there is something for everyone. If you prefer to do your own thing, you can use one of our fully equipped gyms at Medway and Avery Hill Campuses or take an exercise class – Zumba or yoga, for instance. (Fees apply for gym use and exercise classes.)

Whatever you're into, you will have access to great sports facilities which we are continuously investing in. The latest additions are two floodlit all-weather sports pitches at our Avery Hill Campus that allow us to play most of our student sports on campus – which is unusual for a London university. We also offer sports scholarships for talented, high-achieving athletes.

If you're interested in a sports-related career, you can take advantage of the strong partnerships we have with external sporting organisations. They include Charlton Athletic FC, whose training ground is moments from our Avery Hill Campus. This is particularly advantageous for sports science students as all sports science related teaching takes place at Avery Hill Campus.

Our partnership with Charlton Athletic FC provides our students with unique internships and employment in a variety of roles, from sports coaching and sports science to events management, PR and finance. From 2019, our students will also have access to Charlton's new state-of-the-art training ground facilities next to Avery Hill Campus.

You can learn more about our sports and leisure offerings on our website at greenwich.ac.uk or find us on Facebook @uniofgreenwich.



“

Whether you're after fun ways to keep fit or are interested in a sports-related career, you'll have access to great sport facilities and can take advantage of our strong partnerships with external organisations, including Charlton Athletic FC.

Marianne Boyle, Head of Sports Strategy



Support

Our student support services will help you make the most of your time with us.

Health and welfare

We provide access to medical treatment and health advice. If you have a problem, you can talk confidentially to a trained counsellor.

Finance and funding

For financial advice, drop into one of our Student Centres. You can book to see a student finance adviser, who can check you're receiving your full entitlement, and help you budget and plan ahead.

Accessibility

If you have a disability, get in touch with the AccessAbility Project before joining the university and find out about the support we offer. The team also supports students from disadvantaged backgrounds and students who are carers. Once you join as a student, our student wellbeing team is on hand with information and support.

Academic support

Through our online Academic Skills Centre, you can gain support from our experienced and friendly lecturers. The centre provides advice on essay writing, notetaking, research skills, exam techniques, presentation skills and dissertation writing. You can also improve your skills through subject-related support, such as one-to-ones with tutors and sessions with librarians.



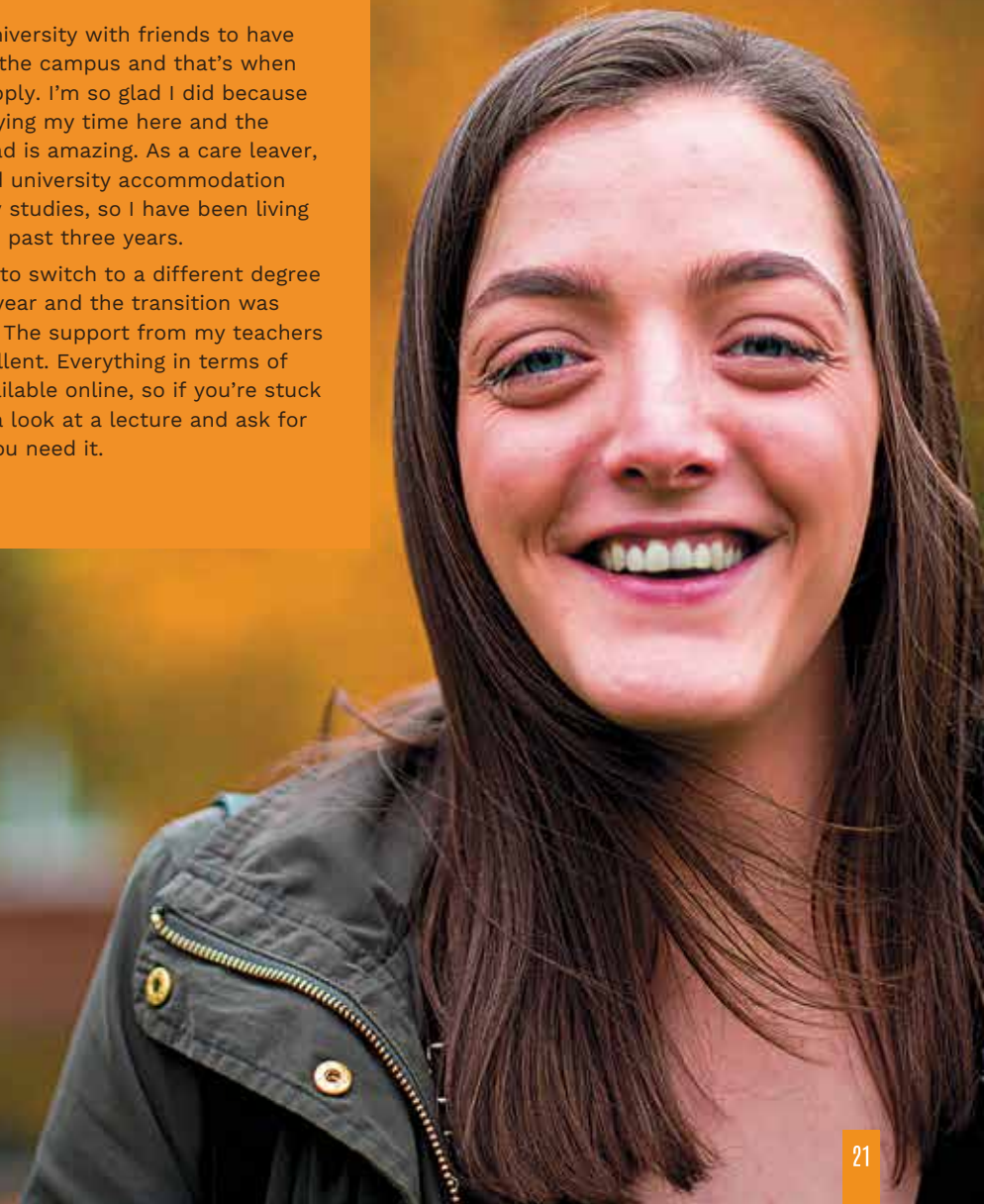
Meet: Kimberley Herron

Student Ambassador,
BSc Hons Psychology

“

I visited the university with friends to have a look around the campus and that's when I decided to apply. I'm so glad I did because I'm really enjoying my time here and the support I've had is amazing. As a care leaver, I'm guaranteed university accommodation throughout my studies, so I have been living in halls for the past three years.

I also decided to switch to a different degree after my first year and the transition was really smooth. The support from my teachers has been excellent. Everything in terms of teaching is available online, so if you're stuck you can have a look at a lecture and ask for extra help if you need it.



Your career

From the moment you join us, we will help you discover your talents and build up a portfolio of life-changing experiences and skills for the workplace. Our Employability & Careers Service has heaps of advice and tools to help you achieve your goals while our courses are designed with the needs of the industry in mind. Over 100 of them are accredited by external professional and regulatory bodies, providing benefits such as exemption from professional exams.

Many of our degrees include work placements which allow you to get out into industry and make new contacts. As well as invaluable hands-on experience, you could end your placement with a graduate job offer. We also offer internships and part-time roles for current students within the university, giving you the chance to earn money and boost your CV.

Working in partnership

Here are just some of the employers we work with:

Arora Group	Health Innovation Network
BAE Systems	IBM
Barclays	Kent County Council
BaxterStorey	Mind
Bloomberg	NHS
Bupa	Oracle
Charlton Athletic Trust	Peabody Housing Association
Civil Service Fast Stream	Pfizer
Computacenter	PwC
Enterprise Rent-A-Car	Royal Borough of Greenwich
Explore Learning	Royal Museums Greenwich
EY	Southeastern
FDM Group	Southern Water
Ford	Sparta Global
Health Education England	The Wellcome Trust



Meet: Elliott Connell

BA Hons Business
Psychology, HR Adviser,
Amazon

“

Without the university, I don't think I would be in the position where I am now. I couldn't have thought of a better way to use four years to develop myself as an individual.

My job as a student supervisor in the Students' Union bar was the perfect place to start putting into practice the theoretical elements of managing people that I gained during my studies on the BA in business psychology.

I wasn't sure what I wanted to do when I finished university so I contacted the employability team, who helped me find a placement with the hospitality firm Sandals. I spent nine months in the Caribbean working very closely alongside the regional human resource manager, which was great for my development and understanding of the working world. It was tough at times but I learned so much and it set me on course to make the transition into the world of work.

In April 2016, I joined Amazon as a graduate HR assistant and was promoted to HR adviser in May 2017. I'm so grateful to the university for helping me find the right career.



Alumni

Our relationship with our students continues long after they finish their studies. When you graduate, you will become part of our worldwide alumni community, giving you access to our facilities, ongoing careers advice and university news. It's a great way to stay in touch with the university, build and develop professional networks and inspire the next generation of students.

Greenwich Portraits celebrates the university's most outstanding alumni with an annual exhibition of photographs telling their stories, some of which you can read here. The 2017 exhibition included a fashion designer, a concert promoter, a fine artist, a photographer and a malaria specialist.



Tom Dingley. Creative industries graduate. Photographer. Campaigner.

Tom's critically acclaimed *Outcome* photography project has transformed him into a campaigner in the LGBT community. Tom learned to trust himself while studying for his creative industries degree. "My tutors encouraged me to define my own style by trying things out. They also encouraged me to be confident and put myself out there."

Karl Ohiri. Fine artist. People-watcher. International citizen.

Since graduating in 2007 with a BA Hons in media, culture and communications, Karl has built a career in the highly competitive fine art world, exhibiting in group shows at Tate Britain (2013) and the National Portrait Gallery (2016). "I can't thank my lecturers enough for the help they've given me – they've played an important part in my success ... They taught me a lot and they're very well connected."



Holly Wang. Business graduate. Entrepreneur. Designer.

Holly is founder of fashion brand Miss Patina. It was her business studies degree that helped her turn her love for fashion into a lucrative business. She says: "It gave me a sound theoretical foundation and knowledge in business and marketing which is key to my success in the fashion industry." The collection is stocked in more than 100 stores and boutiques across the world.



Vikki Cornelius. PhD graduate. Scientist. Malaria specialist.

A PhD chemical sciences graduate, Vikki works at MalariaGEN, a network for researchers in malaria-endemic countries. She says her time at Greenwich gave her the skills and confidence to succeed: "We had regular peer review sessions where we showcased our work before our professors. I found these mildly terrifying, but they taught me how to collaborate with other scientists and get people behind an idea."



Simon Jones. Concert promoter. Musician. Coffee lover.

Simon is Vice President of Live Music at AEG Presents Goldenvoice, an LA-based sporting and music entertainment presenter and one of the world's biggest live music companies. Simon loved his time at the university and says: "To this day, I draw on what I learned in my events management degree in my job as a live music promoter. Studying at the University of Greenwich has undoubtedly helped me get where I am in my career."



Open Days

Visit us

You can find out a lot about the university online but to really get a feel for what it's like to live and study here you should come and visit. On our Open Days you can look around the campus, check out our accommodation, view specialist facilities, take part in taster study sessions, learn more about student support and hear about student life.

Each Open Day follows a similar format and provides a variety of activities. You can:

- Speak to lecturers in your subject area of interest
- Take a tour of the campus and the halls of residence
- Look around the departments and see the specialist labs and equipment
- Chat to current students and find out what it's like to study here

- Meet staff from our wide range of student support services
- Listen to presentations about the different subjects available.

We look forward to meeting you.

To find out more about our Open Days, please visit gre.ac.uk/events.

Other ways to find out about us

If you are an international or EU student and can't get to one of our Open Days, you can contact our International Office for advice. Please see the back cover for contact details.

We make over 80 recruitment visits each year, so you may be able to attend a recruitment event in your home country. To find out more, including country-specific information and tour dates, please visit gre.ac.uk/international.



Our courses

On the following pages, you'll find a listing of our degree-level courses. For more information on these, and on our HNCs, HNDs and foundation degrees, please visit gre.ac.uk/courses.

Entry requirements

As well as A-levels, we accept Level 3 qualifications such as the following:

- BTEC National Diploma
- Advanced GNVQ
- International Baccalaureate
- Scottish Higher
- Access to Higher Education Diploma.

The qualifications we accept vary from course to course. If you have previously studied in higher education, you may be able to count this towards a University of Greenwich qualification. We may also be able to evaluate the skills and knowledge you've gained outside the classroom and count this towards your degree. For example, our Recognition of Prior Learning (RPL) process takes into account your current knowledge and compares it with the learning required on the course you wish to study at the university. It could contribute to your entry qualifications for a course where you do not meet the formal requirements, or exempt you from studying one or more modules.

If you are unsure whether we will accept your qualifications, please check with our UK student recruitment team or International Office. See the back cover for contact details.



International students

Almost all of our courses are open to international students, but see the course listing to check the status of your chosen degree. Applicants who are fee assessed as overseas students but who do not require a Tier 4 student visa may still be able to apply for degrees where international entry is not indicated. Please visit gre.ac.uk/international or contact our International Office to find out more.

Two preparatory courses, our International Foundation Diploma and International Foundation Diploma with English, can help international students who do not have English as a first language to gain the skills needed for degree-level study in the UK.

Language requirements

If you were educated in a language other than English and/or in a country where English speakers are in a minority, you must meet English language requirements for your course. This can be demonstrated by an IELTS test or equivalent.

If you require a Tier 4 (General) student visa to study in the UK, you must have evidence that you meet the necessary

language requirements from a UK Visas and Immigration approved IELTS test.

The minimum IELTS score required for most of our undergraduate courses is 6.0 (with a minimum of 5.5 in each skill).

Higher scores are required for some of our degrees, including courses in architecture, law, midwifery, nursing, paramedic science, social work, primary education and early years. Please see our website or contact the International Office for more information.

Erasmus+

Erasmus+, the European Union student exchange programme, enables students to study part of their degree at a European higher education institution or undertake a work placement in Europe. Students may receive a grant towards living costs while abroad.

The university expects to take part in the programme until the UK leaves the European Union (expected to be in 2019), and there are no immediate plans to change students' entitlement to financial support. For more information, please visit gre.ac.uk/erasmus.

Course index

Each course in this index has its own online page, so once you've found a title that interests you, please visit gre.ac.uk/courses to find out more.

Architecture, landscape and the built environment

Architecture and landscape

Architecture BA Hons	G	F	128
Landscape Architecture BA Hons	G	F	120

Built environment

Construction Management BSc Hons	G	F/P/S	104
Quantity Surveying BSc Hons	G	F/P/S	104

Occupational health and safety

Occupational Safety, Health and Environment BSc Hons (Top-up)	N/A	D	N/A
---	-----	---	-----

Business

Accounting and finance

Accounting and Finance BA Hons	G	F/P/S	120
Accounting and Financial Information Systems BA Hons	G	F/P/S	112
Accounting and Financial Information Systems BA Hons (Ext)*	G	F/S	64
Finance and Investment Banking BSc Hons	G	F/P/S	120
Finance and Investment Banking BSc Hons (Ext)*	G	F/S	64

Advertising, public relations and marketing

Advertising and Digital Marketing Communications BA Hons	G	F/P/S	112
Advertising and Digital Marketing Communications with Language BA Hons	G	F/P/S	120
Marketing Management BA Hons	G	F/P/S	112
Marketing Management BA Hons (Ext)*	G	F/S	64
Marketing Management with Language BA Hons	G	F/P/S	112
Public Relations and Communications BA Hons	G	F/P/S	104

Business and management

Business Entrepreneurship and Innovation BA Hons	G	F/P/S	112
Business Entrepreneurship and Innovation BA Hons (Ext)*	G	F/S	64
Business Management BA Hons	G	F/P/S	112

Business Management BA Hons (Ext)*	G	F/S	64
Business Studies BA Hons	G	F/P/S	112
Business Studies BA Hons (Ext)*	G	F/S	64
Business Studies (Year 3 Direct Entry) BA Hons	G	F/P	N/A
Business with Accounting (Year 3 Direct Entry) BA Hons	G	F/P	N/A
Business with Finance BA Hons	G	F/P/S	112
Business with Finance BA Hons (Ext)*	G	F/S	64
Business with Human Resource Management BA Hons	G	F/P/S	112
Business with Human Resource Management BA Hons (Ext)*	G	F/S	64
Business with Human Resource Management (Year 3 Direct Entry) BA Hons	G	F/P	N/A
Business with Language BA Hons	G	F/P/S	112
Business with Marketing BA Hons	G	F/P/S	112
Business with Marketing BA Hons (Ext)*	G	F/S	64
Business with Marketing (Year 3 Direct Entry) BA Hons	G	F/P	N/A
Human Resource Management BA Hons	G	F/P/S	112
Human Resource Management BA Hons (Ext)*	G	F/S	64
Information Technology Management for Business BSc Hons	M	F/S	104

Economics

Business Economics BA Hons	G	F/P/S	112
Business Economics BA Hons (Ext)*	G	F/S	64
Economics BSc Hons	G	F/P/S	120
Economics with Banking BSc Hons	G	F/P/S	120

Events management, hospitality and tourism

Events Management BA Hons	G	F/P/S	112
Events Management BA Hons (Ext)*	G	F/S	64
Hospitality Management BA Hons	G	F/P/S	112
Hospitality Management BA Hons (Ext)*	G	F/S	64
Tourism Management BA Hons	G	F/P/S	112
Tourism Management BA Hons (Ext)*	G	F/S	64
Tourism Management with Language BA Hons	G	F/P/S	112

International business

International Business BA Hons	G	F/P/S	120
International Business BA Hons (Ext)*	G	F/S	64
International Business with Language BA Hons	G	F/P/S	120

Logistics and supply chain management

Business Logistics and Transport Management BA Hons	G	F/P/S	112
Business Logistics and Transport Management BA Hons (Ext)*	G	F/S	64
Business Logistics and Transport Management (Year 3 Direct Entry) BA Hons	G	F/P	N/A
Business Purchasing and Supply Chain Management BA Hons	G	F/P/S	112
Business Purchasing and Supply Chain Management BA Hons (Ext)*	G	F/S	64
Business Purchasing and Supply Chain Management (Year 3 Direct Entry) BA Hons	G	F/P	N/A

Computing, mathematics and information technology

Information technology

Business Information Technology BSc Hons	G	F/P/S	112
Business Information Technology BSc Hons (Ext)	G	F/S	64

Mathematics and statistics

Financial Mathematics BSc Hons	G	F/P	104
Mathematics BSc Hons	G	F/P/S	104
Mathematics BSc Hons (Ext)	G	F/P/S	64
Mathematics and Computing BSc Hons	G	F/P/S	104
Mathematics with Business BSc Hons	G	F/P/S	104
Mathematics with Economics BSc Hons	G	F/P/S	104
Mathematics MMath	G	F/P/S	112
Statistics and Operational Research BSc Hons	G	F/P/S	104

Multimedia

Digital Media Design and Development BSc Hons	G	F/P/S	112
Digital Media Design and Development BSc Hons (Ext)	G	F/S	64
Games Design and Development BSc Hons	G	F/P/S	112

Other computing courses

Business Computing BSc Hons	G	F/P/S	112
Computer Science BSc Hons	G	F/P/S	112
Computer Security and Forensics BSc Hons	G	F/P/S	112
Computing BSc Hons	G	F/P/S	112
Computing BSc Hons (Ext)	G	F/S	64
Software Engineering BEng Hons	G	F/P/S	112

Education

Further education and skills

Lifelong Learning Sector PCE	A/G	F/D	N/A
Lifelong Learning Sector (ESOL) PCE	A	F	N/A
Lifelong Learning Sector (ESOL and Literacy) PCE	A	F	N/A
Lifelong Learning Sector (Literacy) PCE	A	F	N/A
Lifelong Learning Sector (Numeracy) PCE	A	F	N/A

Physical education and sport

Physical Education and Sport BA Hons	A	F/P	104
Physical Education and Sport BA Hons (Ext)	G+A	F	64

Primary education

Primary Education with Qualified Teacher Status (QTS) BA Hons	A	F	112
Primary Education (2-Year Accelerated Degree) BA Hons	A	F	112

Other education courses

Childhood and Youth Studies BA Hons	G	F	104
Childhood and Youth Studies BA Hons (Ext)	G	F	64
Early Years BA Hons	G	F/P	104
Early Years BA Hons (Top-up)	G	F/P	N/A
Education Studies BA Hons	G	F	104

Language and Literacy Education (2-Year Accelerated Degree) BA Hons	G+A	F	120
Mathematics Education (2-Year Accelerated Degree) BA Hons	G+A	F	120

Engineering

Chemical engineering

Chemical Engineering MEng	M	F/P/S	136
Chemical Engineering BEng Hons	M	F/P/S	120
Chemical Engineering BEng Hons (Ext)	M	F/P/S	64

Civil engineering

Civil Engineering MEng	M	F/P/S	136
Civil Engineering BEng Hons	M	F/P/S	120
Civil Engineering BEng Hons (Ext)	M	F/P/S	64

Computer engineering

Computer Engineering MEng	M	F/P/S	136
Computer Engineering BEng Hons	M	F/P/S	120
Computer Engineering BEng Hons (Ext)	M	F/P/S	64

Cybernetics

Cybernetics MEng	M	F/P/S	136
Cybernetics BEng Hons	M	F/P/S	120
Cybernetics BEng Hons (Ext)	M	F/P/S	64

Design, innovation and entrepreneurship

Design, Innovation and Entrepreneurship MEng	M	F/P/S	136
Design, Innovation and Entrepreneurship BEng Hons	M	F/P/S	120
Design, Innovation and Entrepreneurship BEng Hons (Ext)	M	F/P/S	64

Electrical and electronic engineering

Electrical and Electronic Engineering MEng	M	F/P/S	136
Electrical and Electronic Engineering BEng Hons	M	F/P/S	120
Electrical and Electronic Engineering BEng Hons (Ext)	M	F/P/S	64

Engineering management

Engineering Management BEng Hons	M	F/P/S	104
Engineering Management BEng Hons (Ext)	M	F/P/S	64

Engineering technology

Engineering Technology BEng Hons	M	F/P/S	104
----------------------------------	---	-------	-----

Industrial engineering

Industrial Engineering MEng	M	F/P/S	136
Industrial Engineering BEng Hons	M	F/P/S	120
Industrial Engineering BEng Hons (Ext)	M	F/P/S	64

Mechanical engineering

Mechanical Engineering MEng	M	F/P/S	136
Mechanical Engineering BEng Hons	M	F/P/S	120
Mechanical Engineering BEng Hons (Ext)	M	F/P/S	64

Health

Nursing, midwifery and paramedic science

Adult Nursing BSc Hons	A/M	F	112
Children's Nursing BSc Hons	A	F	112
Learning Disabilities Nursing BSc Hons	A	F	112
Mental Health Nursing BSc Hons	A	F	112
Midwifery BSc Hons	A	F	120
Paramedic Science BSc Hons	A/M	F	112

Psychology and counselling

Business Psychology BSc Hons	G	F/P	112
Psychology BSc Hons	G	F/P	120
Psychology with Counselling BSc Hons	G	F/P	120

Social work and social care

Health and Social Care BA Hons (Top-up)	G	F/P	N/A
Social Work BA Hons	G	F/P	120

Other health courses

Public Health BSc Hons	G	F/P	112
Public Health BSc Hons (Ext)	G	F	64

Humanities and social sciences

English

Creative Writing BA Hons	G	F/P	104
Creative Writing and English Literature BA Hons	G	F/P	104
English Language and Literature BA Hons	G	F/P	104
English Literature BA Hons	G	F/P	104
English Literature with Creative Writing BA Hons	G	F/P	104

History

History BA Hons	G	F/P	104
History and English BA Hons [.....	G	F/P	104
History and Politics BA Hons	G	F/P	104
History and Sociology BA Hons	G	F/P	104

Human geography

Human Geography BA Hons	G	F/P/S	112
--------------------------------------	---	-------	-----

Language and culture

English Language and English Language Teaching BA Hons	G	F/P	104
Languages and International Relations BA Hons	G	F/P	104

Politics

Politics and International Relations BA Hons	G	F/P	104
---	---	-----	-----

Sociology

Sociology BA Hons	G	F/P	104
Sociology BA Hons (Ext)	G	F/S	64
Sociology and Criminology BSc Hons	G	F/P	104
Sociology and Psychology BSc Hons	G	F/P	104

Law and criminology

Criminology

Criminology BA Hons	G	F	120
Criminology BA Hons (Ext)	G	F	64
Criminology and Criminal Psychology BSc Hons	G	F	120
Criminology and Criminal Psychology BSc Hons (Ext)	G	F	64

Law

Law LLB Hons	G	F	120
Law LLB Hons (Ext)	G	F	64
Law Senior Status LLB Hons	G	F	N/A
Law Study Abroad LLB Hons	G	F	120

Media and creative arts

Art and design

Animation BA Hons	G	F	112
Digital Arts BA Hons	G	F/P	104
Graphic and Digital Design BA Hons	G	F/P	112

Drama and performing arts

Drama BA Hons	G	F/P	104
Drama and English Literature BA Hons	G	F/P	104

Film and television

Digital Film Production BSc Hons	G	F	112
Film and Television Production BA Hons	G	F/P/S	112
Film Studies BA Hons	G	F/P	112

Media

Media and Communications BA Hons	G	F/P	112
---	---	-----	-----

Music and sound

Sound Design BA Hons	G	F/P	112
-----------------------------------	---	-----	-----

Science

Biology and biomedical sciences

Applied Biomedical Science BSc Hons	M	P/S	112
Biology BSc Hons	M	F/S	112
Biology BSc Hons (Ext)	M	F/S	64
Biology MBiol	M	F	120
Biomedical Science BSc Hons	M	F/S	112
Biomedical Science BSc Hons (Ext)	M	F	64

Chemistry and pharmaceutical science

Chemistry BSc Hons	M	F/P/S	112
Chemistry BSc Hons (Ext)	M	F	64
Chemistry MChem	M	F/S	120
Pharmaceutical Sciences BSc Hons	M	F/P	112
Pharmaceutical Sciences BSc Hons (Ext)	M	F	64

Combined science

Natural Sciences BSc Hons	M	F	112
Natural Sciences BSc Hons (Ext)	M	F	64

Forensic science

Forensic Science BSc Hons	M	F/S	112
Forensic Science BSc Hons (Ext)	M	F	64
Forensic Science with Criminology BSc Hons	M+G	F/S	112
Forensic Science with Criminology BSc Hons (Ext)	M+G	F	64

Geography and environmental science

Environmental Science BSc Hons	M	F/P/S	112
Geography BSc Hons	M	F/P/S	112

Pharmacy and pharmacology

Pharmacology and Physiology BSc Hons	M	F/S	120
Pharmacology and Physiology (with Integrated Foundation Year) BSc Hons	M	F	72
Pharmacy MPharm	M	F	128

Sports science and nutrition

Human Nutrition BSc Hons	M	F/P/S	112
Human Nutrition BSc Hons (Ext)	M	F	64
Sports Science BSc Hons	A	F/S	104
Sports Science BSc Hons (Ext)	A	F	64
Sports Science with Coaching BSc Hons	A	F	104
Sports Science with Coaching BSc Hons (Ext)	A	F	64
Sports Science with Professional Football Coaching BSc Hons	A	F	104
Sports Science with Professional Football Coaching BSc Hons (Ext)	A	F	64

Partner college courses

We work closely with our partner colleges to broaden our range of courses. Subjects offered by our partner colleges are given below. New courses are regularly introduced, so please check our Partner College Network page at gre.ac.uk/about-us/partner/pcn for the latest information.

Bird College: professional dance and musical theatre

Guildford College: counselling, early childhood studies

Hadlow College: land-based subjects, including agriculture, animal management, fisheries management, equine studies, horticulture, garden design, and landscape management

Lewisham and Southwark College: business information technology, early years education

London South East Colleges: building and construction, computing, education, health and social care, science

MidKent College: building services engineering, construction, engineering (civil, electrical, electronic, mechanical)

North East Surrey College of Technology: education, counselling

North Kent College: sports studies

West Kent College: education



How to apply

Making your application

Most full-time home students apply through the Universities and Colleges Admissions Service (UCAS). To find the deadline for your application, please visit www.ucas.com and click on 'Key dates'.

If you are an international student or wish to study part-time, you must apply direct to the university at gre.ac.uk/apply. This is also your route if you want to study one of our PCE Lifelong Learning Sector courses.

Finding the information you need

If you apply through UCAS, you will need to quote UCAS codes for your chosen courses. You can find these on our online course pages.

Each course summary includes information on entry requirements. Please also check our website, where entry requirements may include additional information such as alternative qualifications accepted by the university.

Getting advice

UCAS provides comprehensive guidance and advice on applying to university. To find out more, please click on 'Contact us' at www.ucas.com.

You can also contact our UK student recruitment team or International Office for assistance (see the back cover of this publication for contact details) or visit gre.ac.uk/study/apply/ug for further information about applying to the University of Greenwich.



An important note

This prospectus provides information on the facilities and courses which the university intends to offer during the academic year commencing autumn 2019.

The prospectus and web pages are prepared in advance of the academic year to which they relate. Every effort has been made to ensure that the information given is helpful, fair and accurate at the time of printing. However, this information is subject to change over time.

The university will take reasonable steps to provide the courses and services as described; however, the university cannot guarantee the provision of any course or facility. Some circumstances, such as staff changes, resource limitations and other factors over which the university has no control, such as industrial action, a change in the law or the level of demand for a particular course or module (please note that this list is non-exhaustive), may result in the university having to withdraw or change aspects of the courses, modules and/or student services detailed in this publication. This could include, but not necessarily be limited to, course or module content, staffing, the location where the course or module is taught or the manner of teaching delivery, and the facilities provided to deliver or support the course.

Where circumstances demand an unavoidable change or where it is necessary for the university to discontinue a course of study, the university will take all reasonable steps to minimise the effect. Potential applicants who have registered an interest in the relevant course will be notified of all proposed changes at the earliest possible opportunity. Changes will also be reflected at the university's website (greenwich.ac.uk). In addition, any changes between the prospectus and the proposed course and services will be notified to applicants at the time of making an offer. Should you become a student of the university, this notice shall be a term of any contract between you and the university. Any offer of a place at the university shall be subject to the student enrolment conditions and the university's rules and regulations as amended from time to time.

A copy of the university's current terms and conditions can be found online at gre.ac.uk/reg or obtained in writing.