

ONCAMPUS
UK NORTH

Achieve more



Guaranteed opportunity to
progress to a top university
in the UK and overseas

Our Partners



2020-2021

ONCAMPUS UK NORTH

Study at ONCAMPUS UK North and progress to one of the leading northern UK universities, with guaranteed progression* to our host partner, the University of Central Lancashire (UCLan).

18 of the world's top universities are in northern UK, including our partner UCLan.

(Times Higher Education University Rankings 2019)



Lancaster University

1 Number one university in the north west
(The Complete University Guide 2019)

University of Liverpool

One of the top 25 most targeted universities by leading graduate recruiter organisations in the UK (High Fliers Research)

University of Manchester

One of the UK's Top 5 for graduate employability
(Times Higher Education 2018)

University of Leeds

One of the largest universities in the country, with

33,000 students from over **140** countries

University of St Andrews

UK's **No 1** for student satisfaction
(The Complete University Guide 2019)

Durham University

9 subjects in the prestigious QS World University Subject rankings top 50

Alumni from top northern UK universities include:

Prince William, Duke of Cambridge



Sir Chris Hoy (Olympic Cyclist)



Piers Sellers, OBE (NASA astronaut)



Alistair McGowan (actor and impressionist)



Wole Soyinka (Nobel prize-winning playwright)

Contents

▶ Reaching a Top Northern UK University	
Your route to a top northern UK university	04
Exceptional support to make your university application	05
Track record of success	06
▶ Our Partners	
UCLan	08
Routes to medicine	10
Royal College of Surgeons in Ireland	11
St George's University, Grenada	12
University of Nicosia, Cyprus	13
Progression degrees	
Undergraduate degrees	14
Master's degrees	16
▶ About ONCAMPUS	
How ONCAMPUS works	18
Our Programmes:	
Undergraduate Foundation Programme (UFP)	20
Medicine Undergraduate Foundation Programme (MUFP)	22
Master's Foundation Programme (MFP)	24
▶ About Student Life	
Accommodation	26
▶ Applying	
Next steps	28
Application form	29

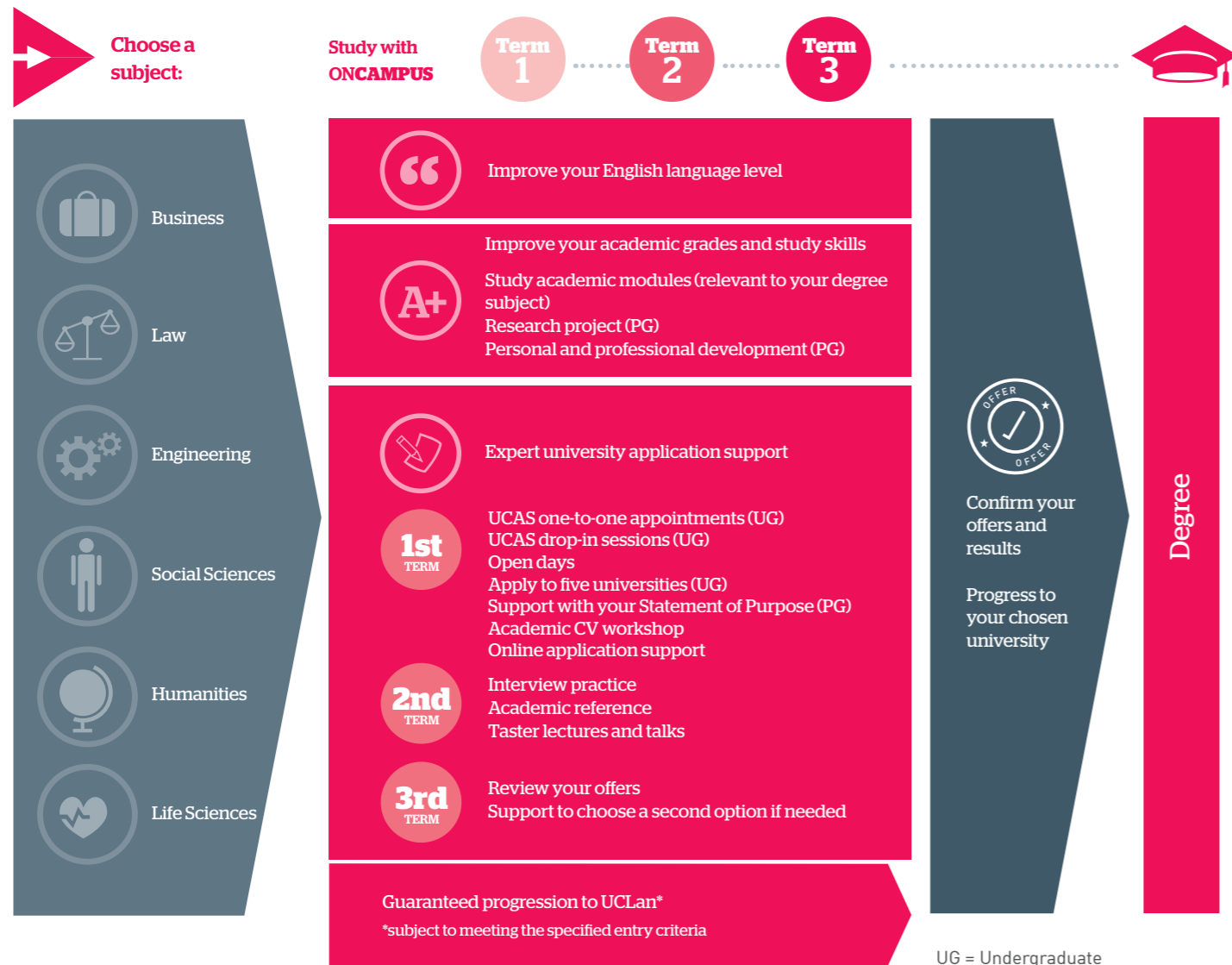
*subject to meeting the specified entry criteria

Your route to medicine and other pathways at top northern UK universities

Preparing for your degree

Do you have:

- 11-12 years of schooling for Undergraduate or a Bachelor's degree or equivalent for Master's?
- an IELTS score of 4.5 or more for Undergraduate or 5.0 or more for Master's?
- the ambition to graduate from a top northern UK university?



ONCAMPUS students have progressed to:

- University of St Andrews (2)
- Durham University (5)
- Lancaster University (7)
- University of Leeds (11)
- University of Glasgow (14)
- University of York (20)
- University of Edinburgh (25)

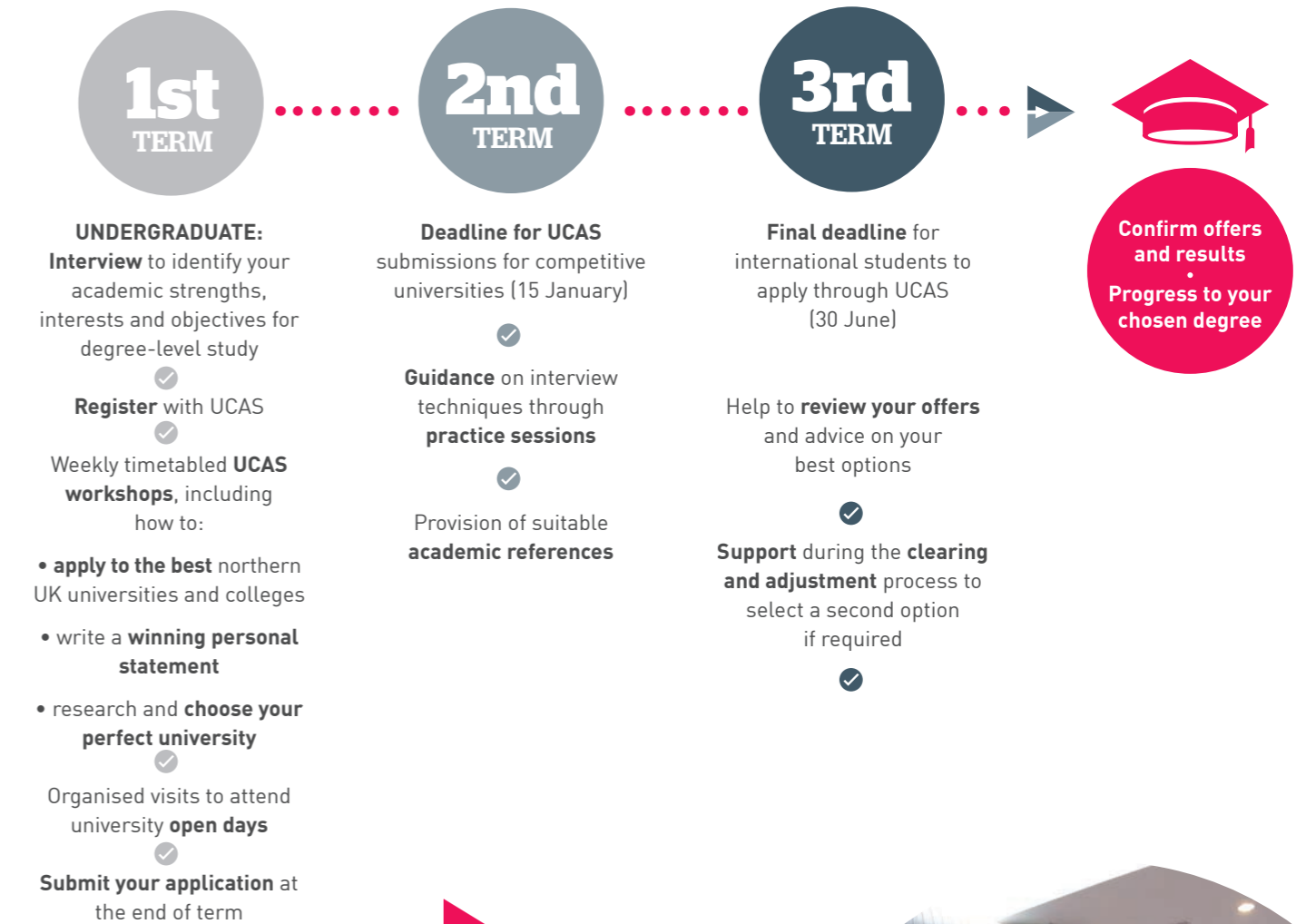
- University of Dundee (29)
- Newcastle University (35)
- University of Manchester (40)
- University of Sheffield (45)

Number in brackets shows The Guardian League Tables 2020

Exceptional support to make your university application

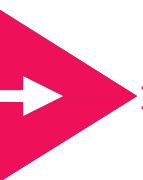
Choosing the right university is one of the most important decisions you will make. At ONCAMPUS UK North our expert Higher Education Advisors will give you all the information, guidance and support you need to make this decision from the start of your programme.

With ONCAMPUS UK North you can apply to any highly ranked university or specialist institution



Attend open days and talks from a range of top universities





Track record of success

Our students successfully progress to degree programmes at top-rated northern UK universities. Below is a small sample

Undergraduate Foundation Programmes

NAME	NATIONALITY	UNIVERSITY DESTINATION	RANK*	UNDERGRADUATE DEGREE
Nyein	Myanmar	Durham University	07	BSc (Hons) Economics with Management with Placement
Lok Tian	Malaysian	Durham University	07	BSc (Hons) Economics with Placement Year
Jing	Chinese	Lancaster University	08	BSc (Hons) Sociology
Abdulrahman	Qatari	Lancaster University	08	LLB (Hons) Law - International Law
Haoran	Chinese	Lancaster University	08	BSc (Hons) Management and Information Technology
Ahmed	Emirati	Leeds University	13	BA Business Management
Wenqi	Chinese	University of Birmingham	14	BSc (Hons) Environmental Science
Yoongi	South Korean	University of Bristol	15	BEng Aerospace Engineering
Louis	Belgian	University of Bristol	15	BEng Mechanical Engineering
Chun	Hong Kong Chinese	University of Manchester	18	BSc Management (Accounting and Finance) with Industrial/Professional Experience
Xinran	Chinese	University of Manchester	18	BSc Cognitive Neuroscience and Psychology
Yichong	Chinese	University of Manchester	18	BSc (Hons) Accounting
Mfonabasi	Nigerian	University of Nottingham	21	LLB (Hons) Law
Man	Chinese	University of York	22	BA (Hons) English Language and Linguistics
Daria	Russian	University of York	22	BA (Hons) History of Art
Xuan	Chinese	University of Edinburgh	25	MA Philosophy and Politics (four year)
Mingxuan	Chinese	University of Edinburgh	25	MA Economics and Statistics (four year)
Jerlynx	Singaporean	University of Sheffield	26	BA Japanese Studies
Shah	British	Newcastle University	28	BSc (Hons) Biomedical Science
Ching	Hong Kong Chinese	Newcastle University	28	BSc (Hons) International Marketing and Management
Yeran	Chinese	King's College London	30	BSc Biomedical Science
Ore-Ofeoluwa	Nigerian	UCLan	Partner	MBBS
Crystal	Portuguese	UCLan	Partner	MBBS
Omar	Saudi Arabian	UCLan	Partner	MBBS
Nadia	Indian	UCLan	Partner	MBBS
Haya	Lebanese	UCLan	Partner	MBBS
Sunwoo	South Korean	UCLan	Partner	MBBS
Ramla	Cameroonian	UCLan	Partner	MBBS
Sam	Jordanian	UCLan	Partner	MBBS
Laith	Omani	Royal College of Surgeons in Ireland	Partner	MBBS
Rahul	Indian	Royal College of Surgeons in Ireland	Partner	MBBS
Dahye	South Korean	Royal College of Surgeons in Ireland	Partner	MBBS



"My year at **ONCAMPUS** has given me confidence to do more than I thought possible. I've achieved **A*s** in my subjects and received offers to study at top universities in the UK."

Sakira | Japanese | **Progressed to: Philosophy and Theological Studies** | **St Andrew's** | **Currently Year 2**

Master's Foundation Programme

NAME	NATIONALITY	UNIVERSITY DESTINATION	RANK*	MASTER'S DEGREE
Eugene	South Korean	Loughborough University	05	MSc Sports Management
Yuanxi	Chinese	Durham University	07	LLM Law
Woosang	South Korean	University of Manchester	18	MSc Advanced Engineering Materials
Siye	Chinese	University of York	22	MA Music Education
Shendong	Chinese	Newcastle University	28	MSc International Business Management

*Good University Guide 2020
Progression data from students graduating in 2018 and 2019. This includes students progressing from **ONCAMPUS** London.

Our partners

UCLan

ONCAMPUS is proud to work in partnership with the University of Central Lancashire (UCLan) to offer high-quality university preparation programmes for international students on the University campus.

**RANKED
in the top**

6%

**of all worldwide
universities**

(by the Center for World
University Rankings 2019-20)

8

**subject areas are
ranked in the Top
20 nationally**

(Complete University Guide 2020)



**General
Pharmaceutical
Council**

MPharm (Hons) is fully
accredited by the General
Pharmaceutical Council (GPhC)

ACCA | CIM | IFE | EI | CIBSE | NCTJ
accredited degree programmes



£2,000

UCLan-ONCAMPUS
annual scholarship.

Available to all successfully
completing foundation
students starting degree
study in 2020-21

[Excludes progression to MBBS]

UCLan has commenced a

£200 million

transformation plan

**for its Preston Campus, which includes social
spaces and a new Student Centre coming in 2021**



UCLan is the
**only UK
university**
to be working in
partnership
with NASA
and the Harvard Smithsonian
Astrophysical Observatory



The brand new Engineering
Innovation Centre is a

£35 million+

state-of-the-art study facility



£13 Million

Sir Tom Finney Sports Centre was
named after Preston's most famous
sporting son, former Preston North End
and England legend, Sir Tom Finney



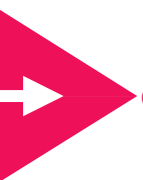
Students on the MBBS benefit from
patient contact in **Year 1** of the
programme at UCLan

ONCAMPUS students are
**guaranteed
an interview**

for the MBBS*

*subject to meeting the
specified entry criteria





Routes to medicine

Medicine is one of the most competitive courses in the UK. Academic entry criteria are high and the interview process can be challenging, but every year thousands of international students are accepted into medical school. **ONCAMPUS UK North** offers a number of routes to medicine through our host partner UCLan, the Royal College of Surgeons in Ireland (RCSI), St George's University in Grenada (SGU) and with the University of Nicosia in Cyprus (UNIC).

Timelines for submission of medicine application documents vary according to individual institutions and the table below should be used as a guide. All students will be supported with their applications to medicine at **ONCAMPUS UK North**.

Preparing for a medicine degree

Do you have:

- 11-12 years of schooling?
- an IELTS score of 6.0 or more?
- a motivation and commitment to succeed?
- the ambition to graduate from a top medical school?

TERM 1				TERM 2				TERM 3			
SEPT	OCT	NOV	DEC	JAN	FEB	MAR	APR	MAY	JUN	JUL	AUG
<p>Start the Medicine UFP at ONCAMPUS UK North</p>				<p>UCLan: Submit your personal statement and transferable skills form</p>				<p>UCLan: If you are forecast to meet the entry requirements you will be issued a conditional offer</p>			
<p>RCSI: Applications open</p>				<p>UCLan: Selection Panel will review your personal statement and transferable skills form</p>				<p>UCLan: Take your exams. Exams are in March</p>			
<p>RCSI: All supporting documents must be supplied</p>				<p>UCLan: English Test. You will take an English test to determine your current level of English</p>				<p>UCLan: Take your exams. Exams are in May. You will receive your results in June</p>			
<p>RCSI: Applicants selected for interview</p>				<p>UCLan: MBBS Interview. If you have met the academic requirements UCLan will interview you for the programme</p>				<p>RCSI: Conditional or full offers are issued. Successful applicants have 21 days to accept their offer</p>			

SGU operates a rolling application process. All supporting documentation must be received by June 15 of the same year of entry

UNIC operates a rolling application process. All applications should be received by mid June of the same year of entry. Applicants are invited to an on-line interview based on actual or predicted grades. Full or conditional offers are issued within two weeks from interview date.



Royal College of Surgeons in Ireland

Established in 1784, RCSI is not only the largest medical school in Ireland but also the only specialist health sciences university. RCSI offers alternative progression routes for Medicine UFP and Life Sciences UFP students onto Medicine, MPharm and Physiotherapy degrees.



RCSI

Ranked in the **top 2%** of universities worldwide

(Times Higher Education World University Rankings 2020)



Located in the heart of Dublin city centre, a dynamic European capital city, steeped in history

€90 million invested in world-class experiential learning facilities since 2017

One of the most international medical schools in the world with over 70% its undergraduate medicine seats reserved for Non EU students.

Progression degrees are:

- MB, BCh, BA0 (Hons) Medicine (5* and 6 years)
- Master of Pharmacy (MPharm) (5 years)
- BSc Physiotherapy (4 years)

*Medicine Undergraduate Foundation Programme only

St. George's University, Grenada

St. George's University (SGU) Grenada, is a top centre of international education, drawing students and faculty from 140 countries to the Caribbean. SGU offers pathways to Medicine and Veterinary Medicine from the Medicine UFP.



Partnership with Northumbria University enables MD students to undertake the first two years of Medicine study in the UK

Truly international with students from 140 different countries

St. George's University MD graduates have been licensed in every state in the United States, as well as in Canada and the United Kingdom, and have practised in more than 50 countries around the world.

St George's is affiliated with educational institutions worldwide, including the United States, the United Kingdom, Canada, Australia, and Ireland

- Progression degrees are:**
- Doctor of Medicine (5.5 years)
 - Doctor of Veterinary Medicine (5.5 years)

University of Nicosia, Cyprus

The University of Nicosia (UNIC) Medical School is the first and largest Medical School in Cyprus. Its diverse student body is made up of more than 900 students coming from all around the world. The University of Nicosia Medical School offers progression into Medicine from the Medicine UFP and Life Sciences UFP.



99.4% employment rate. With students working at over 200 medical centres around the world

The Doctor of Medicine Degree is recognised worldwide. UNIC is listed in the World Directory of Medical Schools and in the UK GMC

Clinical exposure starts as of Year 2 Clinical training is offered at leading hospitals in Cyprus and elective options in the US

In 2019 UNIC was ranked within the Top 100 by the QS World University Rankings in the Emerging Europe and Central Asia (EECA) Region.

- Progression degrees are:**
- Doctor of Medicine (6 years)

Undergraduate degrees you can progress to

with guaranteed progression* to a University of Central Lancashire degree or other partner as specified.

*subject to meeting the specified entry criteria.



ONCAMPUS PROGRESSION PATHWAY: BUSINESS

PASS MARK FOR PROGRESSION (IN ACADEMIC MODULES): **40%**

ENGLISH REQUIRED IELTS EQUIVALENT: **6.0** (no component lower than 5.5)

- BA (Hons) Accounting and Finance
- BA (Hons) Accounting and Financial Studies
- BA (Hons) Business and Management
- BA (Hons) Business and Marketing
- BA (Hons) Creative Advertising¹
- BA (Hons) Event Management
- BA (Hons) Fashion Promotion¹
- BA (Hons) Interior Design¹

- BA (Hons) International Business
- BA (Hons) International Hospitality Management
- BA (Hons) International Tourism Management
- BA (Hons) Marketing
- BA (Hons) Photography
- BA (Hons) Television Production
- BSc (Hons) Media Production
- BSc (Hons) Sports Business Management

¹ Students must successfully complete UCLan's Art, Design and Fashion module

ONCAMPUS PROGRESSION PATHWAY: LIFE SCIENCES

PASS MARK FOR PROGRESSION (IN ACADEMIC MODULES): **40%**

ENGLISH REQUIRED IELTS EQUIVALENT: **6.0** (no component lower than 5.5)

- BA (Hons) Counselling and Psychotherapy Studies
- BA (Hons) Football Coaching & Development
- BA (Hons) Sports Coaching and Development (relevant experience required)
- BA (Hons) Sports Coaching and Performance
- BSc (Hons) Archaeology
- BSc (Hons) Biomedical Science
- BSc (Hons) Chemistry (students should study Chemistry and Maths modules as part of UFP)
- BSc (Hons) Dental Therapy (65% in academic modules, IELTS 7.0 plus multiple mini interview and personal statement and reference)
- BSc (Hons) Forensic Psychology
- BSc (Hons) Forensic Science
- BSc (Hons) Forensic Science and Criminal Investigation
- BSc (Hons) Healthcare Science (available from year two, following interview and successful completion of year one of BSc (Hons) Biomedical Science)
- BSc (Hons) Medical Sciences (60% in academic modules)
- BSc (Hons) Neuropsychology
- BSc (Hons) Neuroscience

- BSc (Hons) Nursing with Registered Nurse (Adult) Pre-Registration (50% in academic modules, IELTS 7.0 plus personal statement and interview)
- BSc (Hons) Nursing with Registered Nurse (Child) Pre-Registration (60% in academic modules, IELTS 7.0 plus personal statement and interview)
- BSc (Hons) Nursing with Registered Nurse (Mental Health) Pre-Registration (50% in academic modules, IELTS 7.0 plus personal statement and interview)
- BSc (Hons) Nutrition and Exercise Sciences
- BSc (Hons) Physiology and Pharmacology
- BSc (Hons) Physiotherapy (65% in academic modules, IELTS 7.0 (with no component lower than 7.0), personal statement and interview)
- BSc (Hons) Policing and Criminal Investigation
- BSc (Hons) Sexual Health Studies
- BSc (Hons) Sports and Exercise Science (relevant experience required)
- BSc (Hons) Sports Therapy (relevant experience required)
- MChem Chemistry (students should study Chemistry and Maths modules as part of UFP)
- MPharm (Hons) (65% in academic modules, IELTS 7.0 plus interview and test)
- MSci Forensic Science and Chemical Analysis
- MSci Forensic Science and Molecular Biology

ONCAMPUS PROGRESSION PATHWAY: MEDICINE

PASS MARK FOR PROGRESSION (IN ACADEMIC MODULES): **70%**

ENGLISH REQUIRED IELTS EQUIVALENT: **7.0** (no component lower than 7.0)

MBBS Medicine (MBBS Bachelor of Medicine and Bachelor of Surgery) Students must complete a volunteer or work experience placement and be successful at MBBS multiple mini interview

MPAS (Hons) Physician Associate Studies (65% in academic modules, IELTS 7.0 plus interview)

ONCAMPUS PROGRESSION PATHWAY: ENGINEERING

PASS MARK FOR PROGRESSION (IN ACADEMIC MODULES): **40%**

ENGLISH REQUIRED IELTS EQUIVALENT: **6.0** (no component lower than 5.5)

- BEng/MEng (Hons) Aerospace Engineering² (Maths including calculus and physics is compulsory)
- BEng/MEng (Hons) Aerospace Engineering with Industrial Placement² (Maths including calculus and physics is compulsory)
- BEng/MEng (Hons) Aerospace Engineering with Pilot Studies² (Maths including calculus and physics is compulsory)
- BEng/MEng (Hons) Building Services and Sustainable Engineering
- BEng/MEng (Hons) Computer Aided Engineering
- BEng/MEng (Hons) Electronic Engineering
- BEng/MEng (Hons) Energy Engineering
- BEng/MEng (Hons) Fire Engineering
- BEng/MEng (Hons) Mechanical Engineering
- BEng/MEng (Hons) Motorsports Engineering
- BEng/MEng (Hons) Oil and Gas Safety Engineering
- BEng/MEng (Hons) Robotics Engineering
- BEng (Hons) Civil Engineering
- BEng (Hons) Civil Engineering and Construction Management
- BEng (Hons) Electrical and Electronic Engineering

²60% minimum in academic modules.

ONCAMPUS PROGRESSION PATHWAY: HUMANITIES

PASS MARK FOR PROGRESSION (IN ACADEMIC MODULES): **40%**

ENGLISH REQUIRED IELTS EQUIVALENT: **6.0** (no component lower than 5.5)

- BA (Hons) Asia Pacific Studies (Chinese/Japanese/Korean/Russian)
- BA (Hons) Children, Schools and Families
- BA (Hons) Criminology and Criminal Justice
- BA (Hons) Criminology and Sociology
- BA (Hons) Education Studies
- BA (Hons) English Literature
- BA (Hons) Film, Media and Popular Culture
- BA (Hons) Geography
- BA (Hons) History
- BA (Hons) History and Politics
- BA (Hons) International Journalism
- BA (Hons) Journalism (IELTS 7.5 (with no component lower than 7.0) plus interview)

- BA (Hons) Modern Languages for International Business (Arabic, French, German, Japanese or Spanish)
- BA (Hons) Philosophy
- BA (Hons) Photography
- BA (Hons) Politics, Philosophy and Society
- BA (Hons) Religion, Culture and Society
- BA (Hons) Sociology
- BA (Hons) Sports Journalism (IELTS 7.5 (with no component lower than 7.0) plus interview)
- BA (Hons) TESOL and Modern Languages (IELTS 7.0 (with no component lower than 6.5))
- BA (Hons) Television Production
- BSc (Hons) Psychology
- LLB (Hons) Law (refer to website for further routes)

ONCAMPUS PROGRESSION PATHWAY: MEDICINE OR LIFE SCIENCE UFP

PASS MARK FOR PROGRESSION (IN ACADEMIC MODULES): **60%**

ENGLISH REQUIRED IELTS EQUIVALENT: **6.5** (no component lower than 6.0)

- MB, BCh, BA0 (Hons) Medicine (5 years)* (70% in academic modules)
- MB, BCh, BA0 (Hons) Medicine (6 years) (65% in academic modules)

*Medicine Undergraduate Foundation Programme only

- Master of Pharmacy (MPharm) (5 years) (65% in academic modules)
- BSc Physiotherapy (4 years)



ONCAMPUS PROGRESSION PATHWAY: MEDICINE

PASS MARK FOR PROGRESSION (IN ACADEMIC MODULES): **70%**

ENGLISH REQUIRED IELTS EQUIVALENT: **6.5**

Doctor of Medicine (5.5 years)

Doctor of Veterinary Medicine (5.5 years)



ONCAMPUS PROGRESSION PATHWAY: MEDICINE OR LIFE SCIENCES UFP

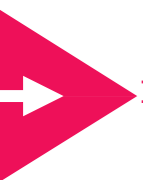
PASS MARK FOR PROGRESSION (IN ACADEMIC MODULES): **65%**

ENGLISH REQUIRED IELTS EQUIVALENT: **6.5** (no component lower than 6.0)

Doctor of Medicine (6 years)

Other progression degrees are available subject to completion of a three year BSc degree. Please enquire for details.





Master's degrees you can progress to

with guaranteed progression* to a University of Central Lancashire degree.

*subject to meeting the specified entry criteria.

Master's degree

ONCAMPUS PROGRESSION PATHWAY: BUSINESS

PASS MARK FOR PROGRESSION (IN ACADEMIC MODULES): 40%

ENGLISH REQUIRED IELTS EQUIVALENT: 6.5 (no component lower than 6.0)

- MA Accounting & Financial Management (CIMA)
- MA Intercultural Business Communication
- MA Publishing
- MA Teaching English to Speakers of Other Languages (TESOL) with Applied Linguistics (students must demonstrate appropriate teaching experience in language education and/or a pre-service certificate (Cambridge CELTA/Trinity Cert. TESOL or equivalent))
- MBA Master of Business Administration (with professional placement)
- MSc Cancer Biology and Therapy (50% in academic modules, successful interview and test)
- MSc Computing (with professional placement)
- MSc Finance and Management
- MSc Fire and Rescue Service Management
- MSc Human Resource Management/Development
- MSc International Business and Management
- MSc International Festivals and Tourism Management
- MSc International Hospitality and Event Management
- MSc International Hospitality and Tourism Management
- MSc IT Security (with professional placement)
- MSc Psychology Conversion
- MSc Sports Business Management
- MSc Sports Business Marketing

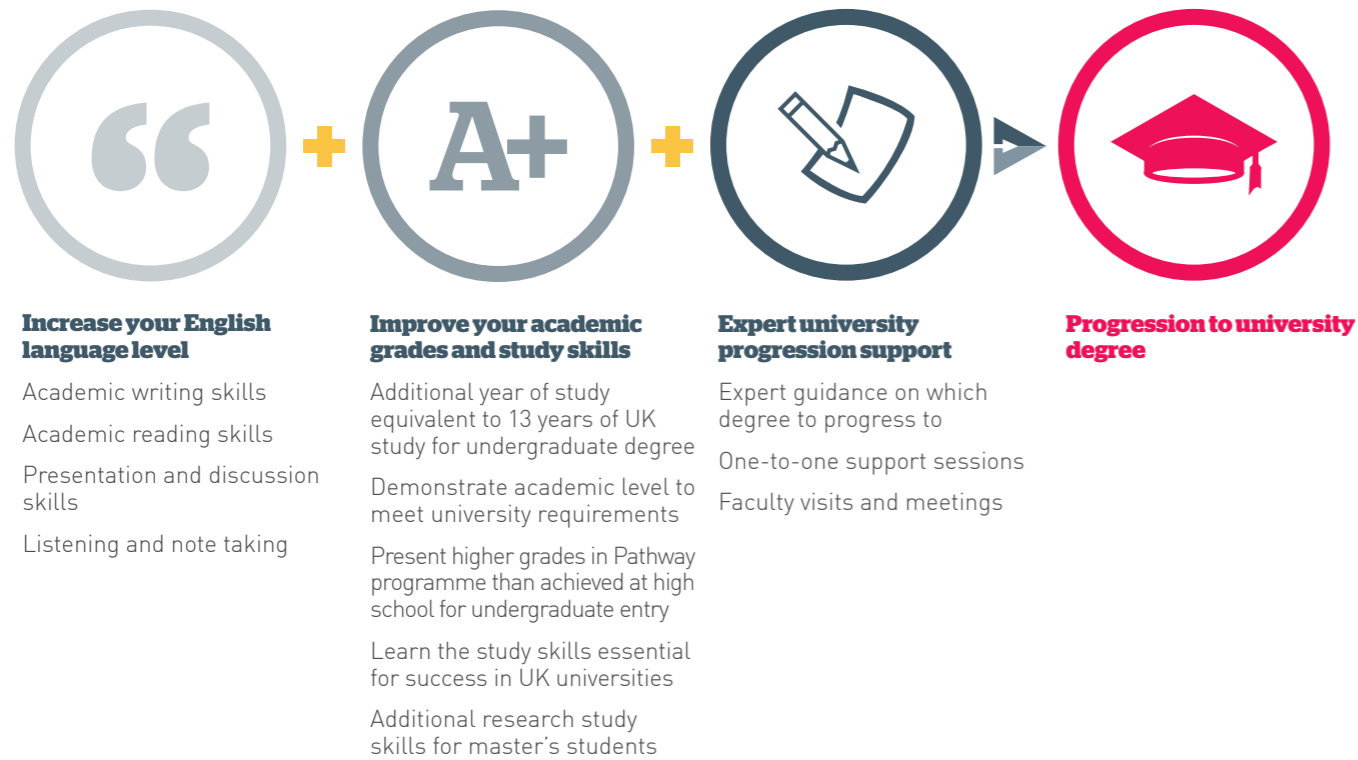


“During the **ONCAMPUS** programme I’ve learned we need lots of skills to be a doctor; communication, confidence and empathy. The teachers at **ONCAMPUS** offered us all the help we needed to gain more knowledge. In doing the **ONCAMPUS** Medicine Foundation I definitely gained more knowledge and came out more fit to be a doctor than I was before.”

Ali | Bahraini | Progressed to: MBBS | UCLan | Currently Year 2

How ONCAMPUS Works

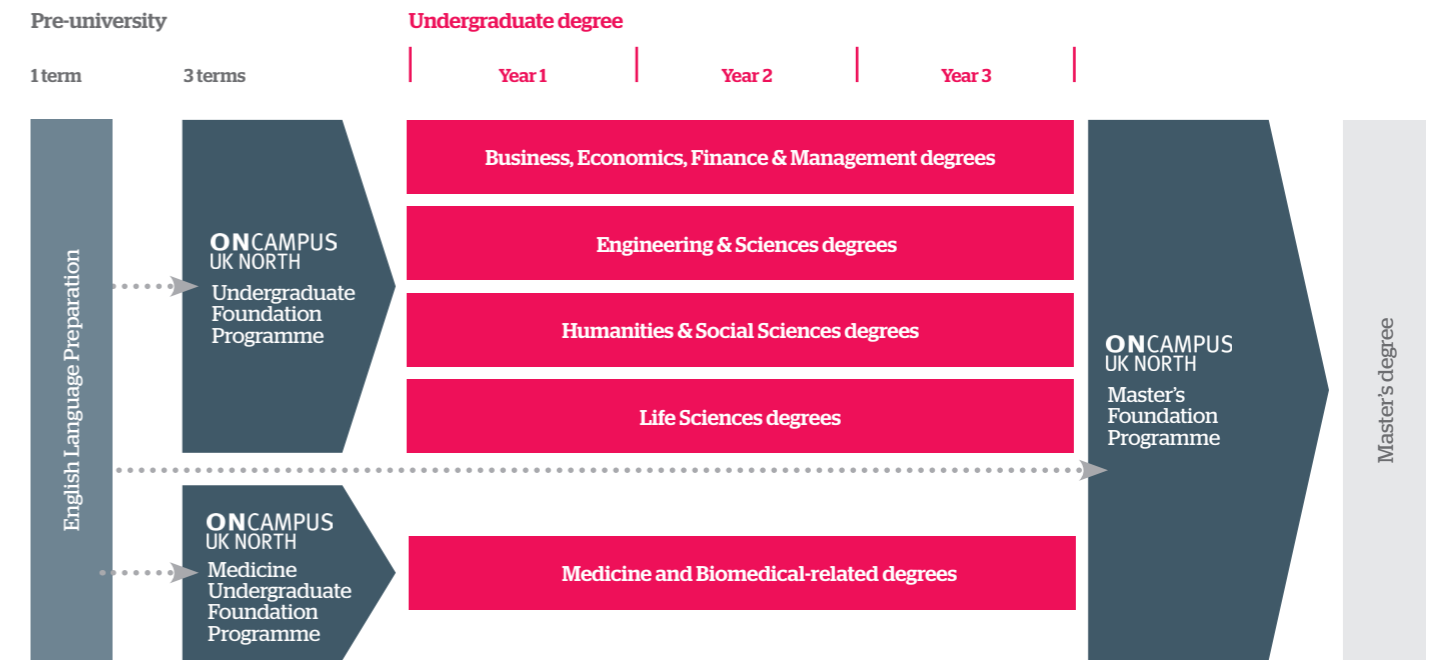
Our programmes at ONCAMPUS UK North are designed for international students who do not meet the requirements for direct entry to UK universities to study. You will benefit from the support we offer in preparing you to progress to the University.



Your route to a degree at University of Central Lancashire

ONCAMPUS UK North offers guaranteed progression* to a wide range of undergraduate and postgraduate degrees at UCLan, on successful completion of our Foundation or Master's programmes. Students on the Medicine UFP and Life Sciences UFP have the opportunity to apply for Medicine at UCLan, and a variety of degrees, as listed, at RCSI, St George's University in Grenada and the University of Nicosia in Cyprus. Students may also apply to other UK universities through the UCAS system.

*Subject to meeting the specified criteria.



ONCAMPUS gives you...

Outstanding teaching and support

Through every step of your journey with us, you will be supported by highly qualified teachers and support staff, both in and outside the classroom.

Your personal tutor will meet with you regularly to ensure you are on track to pass the programme and progress to your chosen degree.

Your personal tutor is also there to help you with any issues you might have inside or outside the classroom.

A proven track record of success

ONCAMPUS is part of Cambridge Education Group, one of the UK's leading university pathway providers since 1952.

Cambridge Education Group was the first private institution to offer university foundation programmes in the UK in 1985, and successfully prepares thousands of students for the UK's top universities every year.

Part of the University from day one

The ONCAMPUS UK North centre is located at the heart of UCLan, close to all the University's facilities.

You will receive a University student card, and with it you will have access to all the University's facilities, clubs and societies while you study your ONCAMPUS programme.

You will meet your course leader at the University before you start your degree, and have the opportunity to try out some of the excellent facilities.

Quality assured

ONCAMPUS UK North is reviewed regularly by the Quality Assurance Agency (QAA), which is responsible for maintaining standards across the UK university system.



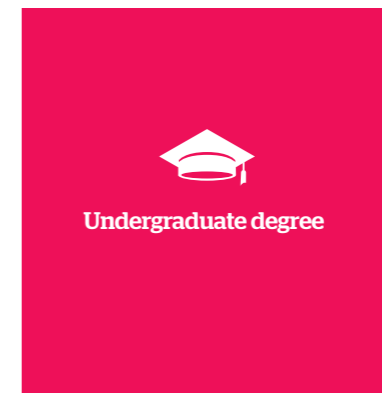
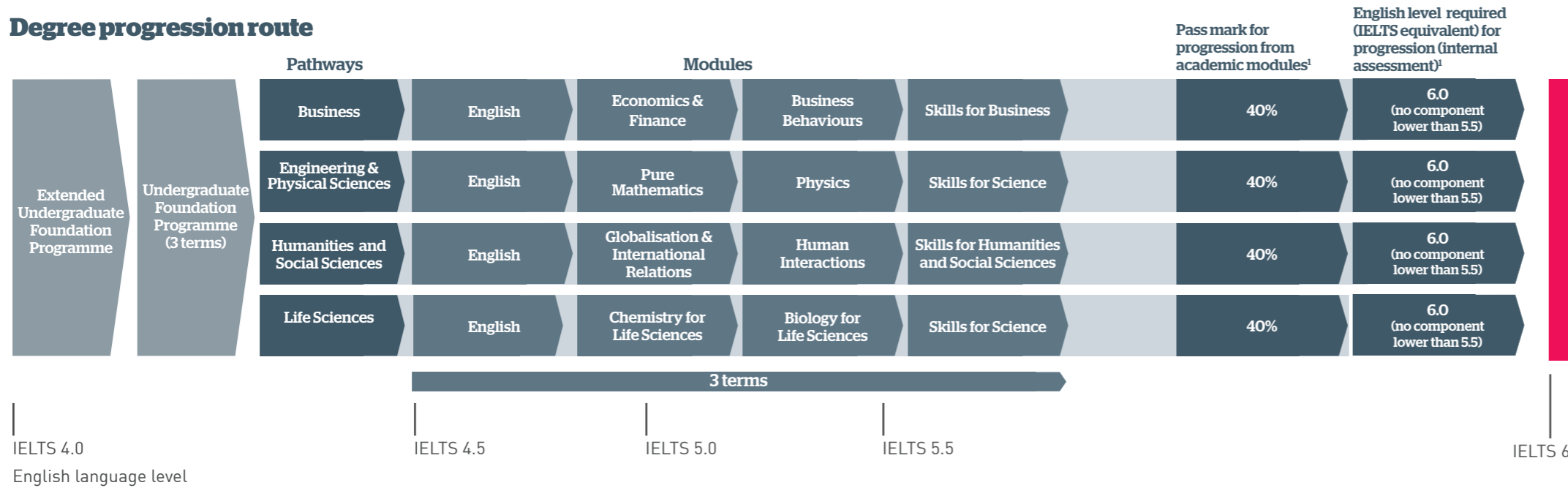
Undergraduate Foundation Programme (UFP)

This programme gives progression¹ to Year 1 of a wide range of undergraduate degrees.



We will teach you **Academic skills** relevant to your subject area to fully prepare you for university study

Degree progression route



Expert guidance and **Support** to progress to a top northern UK university

Entry criteria

English level:

From 4.5 IELTS or equivalent, with no single element less than 4.0, for 3-term UFP.

An extended programme is available if you do not have the required English language level. This programme lasts 4 terms and includes an English language module (ELPP) followed by 3 terms of UFP.

Academic requirements:

11-12 years Successful completion of 11-12 years of schooling with good grades. Please see www.oncampus.global for academic entry requirements.

Guideline minimum age:

16 Must be 17 at the start of the intended degree programme.

¹ Some programmes at UCLan offer guaranteed progression on meeting the specified entry criteria. Please visit www.oncampus.global for more information.

Note: Modules are subject to availability

For a full list of progression degrees see pages 14-16.



Dates	Number of terms	Business and Humanities tuition fee	Engineering and Life Sciences tuition fee	Progressing to undergraduate degree starting in
08 June 2020 - 06 June 2021	4	£19,150	£20,650	September 2021
21 September 2020 - 06 June 2021	3	£14,490	£15,990	September 2021
21 September 2020 - 13 August 2021	4	£19,320	£21,320	September 2021
26 October 2020 - 13 August 2021	3.5	£16,905	£18,655	September 2021
05 January 2021 - 13 August 2021	3	£14,490	£15,990	September 2021

All programmes are subject to a £300 registration fee and £2,200 deposit which is offset against the last term's fees.

3.5 term programmes consist of English language during the first 0.5 term although some academic content may be included.

An Under 18 Supplement applies to all students under the age of 18 at the start of their programme. For more details see page 27 and visit www.oncampus.global/about-us



"The teaching style is different in the UK. I've never had discussions or presentations (in class) before so this was tough for me but I'm glad to have done it. My favourite lesson is human interactions as it is likely to be useful for my future career. Japanese students do not talk in the class but here students help each other, which is really good. People here really concentrate on their studies and being at ONCAMPUS has helped me learn to communicate with students of different nationalities."

Medicine Undergraduate Foundation Programme

This programme gives students the opportunity to apply for Year 1 of the Bachelor of Medicine and Bachelor of Surgery (MBBS) at UCLan, and the opportunity to apply to several degrees, as specified, at the Royal College of Surgeons, Ireland, St. George's University, Grenada and the University of Nicosia, Cyprus.



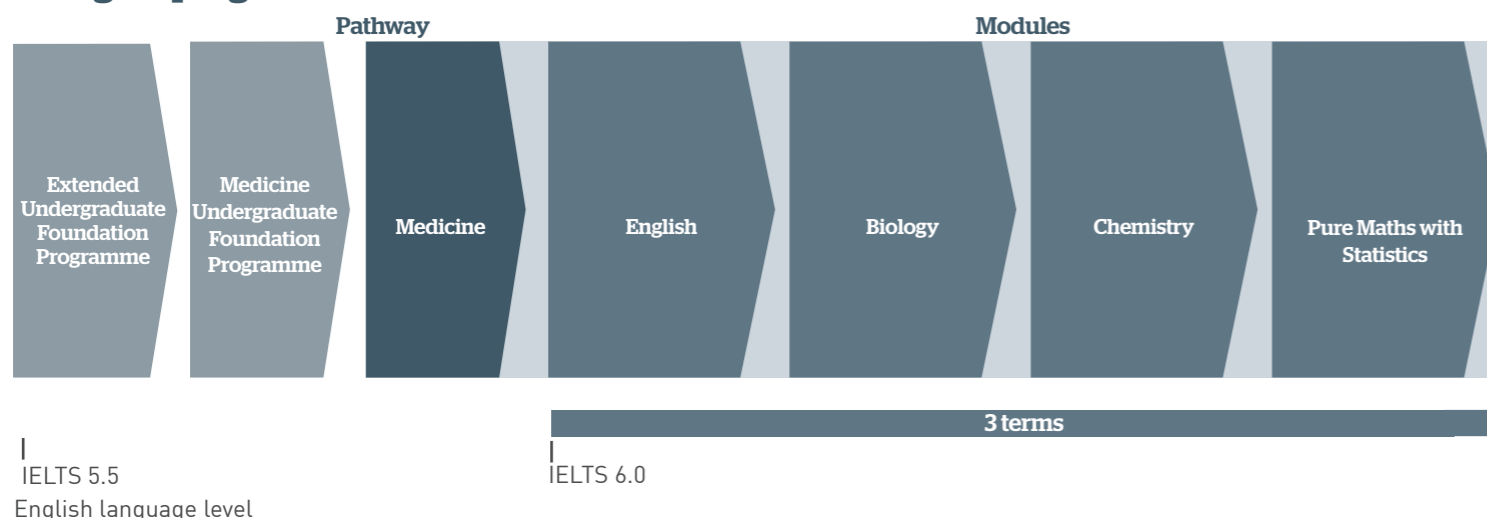
Guaranteed MBBS interview¹ at UCLan



Expert guidance and Interview practice

to prepare you for the medical school application process

Degree progression route



Pass mark for opportunity for progression from academic modules

- 70%
- 70%
65%
60%
- 70%
- 65%

English level required (IELTS equivalent) for progression (internal assessment)

- 7.0 (with no component lower than 7.0)
- 6.5
- 6.5
- 6.5 (6.5 in writing and 6.0 in all other elements)

- Bachelor of Medicine and Bachelor of Surgery (MBBS)
- Medicine (5 year)
Medicine (6 year), MPharm
Physiotherapy
- Doctor of Medicine (5.5 year)
Doctor of Veterinary Medicine (5.5 year)
- Doctor of Medicine (6 year)



Entry criteria

English level:

From **6.0 IELTS** or equivalent, in every element.

Academic requirements:

11-12 years Successful completion of 11-12 years of schooling with good grades. Please see www.oncampus.global for academic entry requirements.

Guideline minimum age:

16+ Must be 17 at the start of the intended degree programme.

Note: Modules are subject to availability.

For a full list of progression degrees see pages 14-16

¹subject to achieving the pass mark required for progression.



Dates	Number of terms	Tuition fee	Progressing to undergraduate degree starting in
21 September 2020 - 06 June 2021	3	£20,985	September 2021
21 September 2020 - 13 August 2021	4	£25,815	September 2021
05 January 2021 - 13 August 2021	3	£20,985	September 2021

All programmes are subject to a £300 registration fee and £2,200 deposit which is offset against the last term's fees.
An Under 18 Supplement applies to all students under the age of 18 at the start of their programme. For more details see page 27 and visit www.oncampus.global/about-us



Mary Jane | Nigerian | Progressed to: MBBS | UCLan | Currently Year 2

"I wanted to study in the UK as a UK degree in Medicine is recognised worldwide which gives me flexibility to work wherever I want to on graduation. The Foundation course at ONCAMPUS UK North bridges the gap between high school and the MBBS as medicine can be very difficult to get into. The learning environment of Preston is good as there is little distraction so you are encouraged to study more. We were few in numbers so it was easier for the teachers to speak one-on-one about our progress. The preparation for the MBBS interview was the best part as it was indepth and very helpful as we were taught what to expect and had help practicing for it."

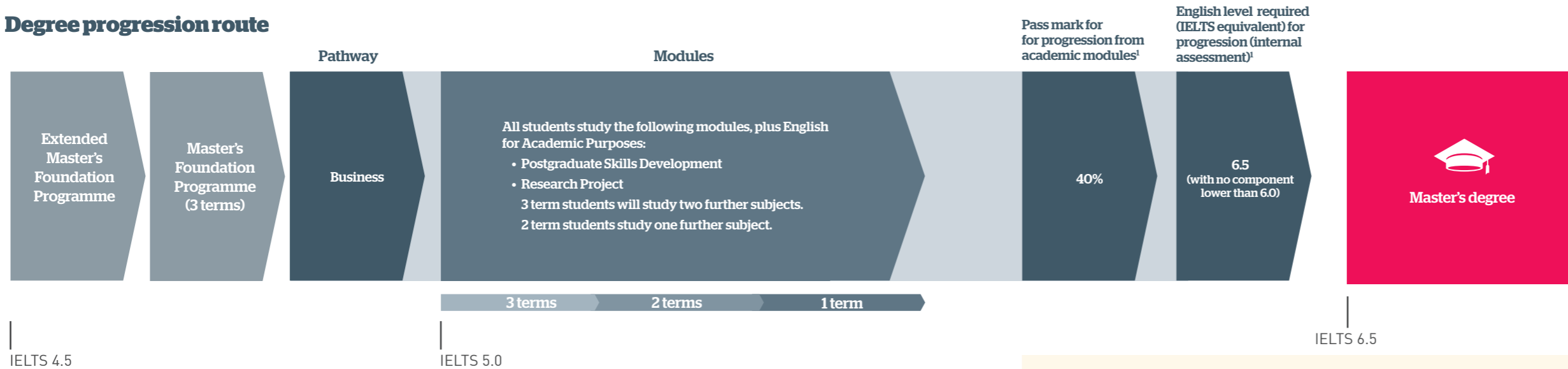
Master's Foundation Programme (MFP)

The Master's Foundation Programme is available as a two or three-term programme, offering progression¹ to a wide range of Master's degrees.



We will teach you **Academic skills** relevant to your subject area to fully prepare you for university study

Degree progression route



Expert guidance and **Support** to progress to a top North UK university

Entry criteria

English level:

From 5.0 IELTS or equivalent, with no single element less than 4.5 for 3-term MFP.

An extended programme is available if you do not have the required English language level. This programme lasts 4 terms and includes an English language module (ELPP) followed by 3 terms of MFP.

Academic requirements:

Degree Successful completion of Bachelor's degree or equivalent from a recognised university.

Guideline minimum age:

21+

¹ Some programmes at UCLan offer guaranteed progression on meeting the specified entry criteria. Please visit www.oncampus.global for more information.

For a full list of progression degrees see pages 16.

Dates	Number of terms	Tuition fee	Progressing to Master's degree starting in
08 June 2020 - 06 June 2021	4	£19,150	September 2021
21 September 2020 - 06 June 2021	3	£14,490	September 2021
21 September 2020 - 13 August 2021	4	£19,320	September 2021
26 October 2020 - 13 August 2021	3.5	£16,905	September 2021
05 January 2021 - 13 August 2021	3	£14,490	September 2021
05 January 2021 - 06 June 2021	2	£9,660	September 2021
22 March 2021 - 13 August 2021	2	£9,660	September 2021

All programmes are subject to a £300 registration fee and £2,200 deposit which is offset against the last term's fees. 3.5 term programmes consist of English language during the first 0.5 term although some academic content may be included.



"The teaching staff help you, give you feedback and you really feel like they want you to get better consistently throughout the course. Humour is a big part of the teaching style, but there is also a sense of feeling like you are at home, any problems you have you can bring to your teachers and friends. It feels like a good study environment and we feel like we are learning more rapidly at **ONCAMPUS** than we would have elsewhere because of that environment. There is a lot of interaction between the teachers and the students, it feels like we are learning from each other and growing as a group. The **ONCAMPUS** MFP has helped prepare me for my Master's definitely - we have focused on academic writing, research skills, research methods, research proposals plus independent study skills - all the things we will need to do at Master's level."


Living in Preston Accommodation


All **ONCAMPUS** students are offered safe and secure accommodation close to where they are studying. The accommodation offers good value for money located within a short stroll of **ONCAMPUS**. We strongly recommend booking early as accommodation places sell out fast.


Price
from **£1,450**
per term*


Accommodation availability
guaranteed until **31 JULY**

Key features:

 Foundry Court accommodation is offered as self-catering.

 Students will receive free Wi-Fi access

 Every bedroom has a 4ft double bed, a study desk and chair

 All prices include all fuel and water bills.

*Accommodation options and prices shown are for 2019/20. These are subject to change. Please visit www.oncampus.global for further details.

Foundry Court (en-suite)

This accommodation offers single, en-suite bedrooms which include a 4ft double bed, study desk, chair and plenty of storage space.

Bedrooms are located with flats of up to 7 bedrooms and within each flat, students have access to a large shared lounge and kitchen for eating and socialising.

The accommodation also has a large shared common room with pool,

table tennis, table football and a flat screen TV.

The nearest food shop is in the Student Union, a 3 minute walk away or there is a supermarket within a 5 minute walk.

The shopping centre and train station can be accessed by walking or by bus within 10 to 15 minutes.



Four to seven rooms in each flat.



3 minute walk to **ONCAMPUS**



Foundry Court



Foundry Court, bedroom



Foundry Court, shared kitchen



Foundry Court, shared lounge



"I was expecting Preston to be small with little to do but I've found it to be quite interesting and fun. I've made lots of friends and the nightlife is really good so we sometimes go out in Manchester or Preston itself as the campus is right in the centre of the city."

Student Cover

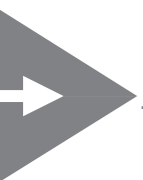
It's essential for international students to take out adequate insurance while studying. 'Student Cover' has been created in partnership with Endsleigh, the UK's largest student insurance provider. With both standard and premium options, 'Student Cover' is specifically designed to meet your needs while studying with us – from the time you set off to the moment you arrive back home.

For more information about Student Cover visit www.oncampus.global/insurance

Under 18 Supplement

Under British Law, anyone under 18 is legally classed as a child and such students often have different needs for welfare and support. **ONCAMPUS** provides a range of extra tailored services covered by the under 18s supplementary fee, which is automatically added to the student's account. Students have access to experienced welfare personnel who provide both academic and emotional support before and after arrival, as well as an independent guardian from the professionally-accredited College Guardians initiative

For more information about the Under 18 Supplement visit www.oncampus.global/about-us



Next steps



1 Submit your application by one of the following methods:

- Online: www.oncampus.global Email: admissions@oncampus.global

Please remember to include all relevant documentation:

- Academic transcripts (with translations if not originally in English)
- Evidence of English level
- Copy of Passport
- Explanation of any study gaps
- Copies of any previous/current study visas

Additional documentation may be required depending on the course. Our Admissions team will contact you should this be the case.

2 Our Central Admissions team will review your application.

We will send you an offer letter which will list any outstanding conditions. We will remove any conditions that have already been met.

If we think the course is not right for you, we will suggest an alternative.

If we have any queries about your application, we will contact you for further information.

3 To accept your place on the course you will need to meet all the remaining conditions, including payment of the deposit/ registration fee or proof of government sponsorship. We can only confirm your place once all conditions have been met, although once the deposit is paid we will hold a place for you.

Please note that if you require a visa to study with us, you may need to provide additional evidence to comply with the visa regulations in the UK. These are the requirements of the government and not of ONCAMPUS. Your assistance in meeting these requirements is much appreciated.

4 Once you have paid your deposit and met all the conditions of offer, we will confirm your place and send you a Confirmation of Acceptance for Studies (CAS) or a Certificate of Enrolment (CoE) if you do not need a CAS.

If you need a visa, you will need to use your CAS/CoE to support your visa application. Please note a CAS can only be issued three months before the start of the course.

5 You will then need to apply for a visa if you require one to study in the UK. It is your responsibility to obtain a visa before you travel to join the course.

If you do not have a valid visa for studies in the UK, you will not be able to join the course. You are required to pay at least the 1st term's tuition fees before you begin your studies at ONCAMPUS. You should arrive on the weekend before the start date of the course, please check your CAS or CoE for further details.

6 We will send you pre-arrival information.

You will need to apply online for your accommodation. Please contact liveinuclan@oncampus.global.

Manchester is the closest international airport to ONCAMPUS UK North. There are various routes you can take to transfer to the accommodation from the airport – by train, bus or taxi. Visit our website for further information.

ONCAMPUS UK North APPLICATION FORM

Apply ONLINE at www.oncampus.global/apply or return this form to:
Admissions Office, ONCAMPUS, 50/60 Station Road, Cambridge, CB1 2JH, United Kingdom
Tel: +44 (0)1223 345698 Email: admissions@oncampus.global

Please write neatly using BLOCK CAPITALS in black ink or typescript.
Incomplete application forms submitted without ALL the supporting documents will delay the decision process.

1. Use of agent (if none, please proceed to section 2) Please complete the details below and see section 7 of the Conditions of Enrolment which can be found at www.oncampus.global/terms

Representative name _____ Branch _____

2. Personal details (must be completed)

Title (Mr/Mrs/Miss/Ms etc) _____ Date of birth (dd/mm/yy) _____

First name(s) _____

Family name _____

Nationality (as passport) _____ Gender _____

Country of permanent residence _____

Home address _____ Parent address (if different) _____

Postcode _____ Postcode _____

Country _____ Country _____

Mobile (incl. country code) _____ Mobile (incl. country code) _____

Telephone (incl. country code) _____ Telephone (incl. country code) _____

Student email (this must be completed) _____

3. Payment of tuition fees

Self Parent/Guardian Company Sponsor Government Sponsor

4. Disability/special needs

If you have a disability, impairment or medical condition which may affect your studies please provide details below.

I consent to ONCAMPUS processing my/the student's disability, impairment or medical condition information provided as part of this application.

Signature of student: _____ Signature of parent/legal guardian (if student is under 18): _____

You have the right to withdraw your consent at any time by emailing the ONCAMPUS data protection officer on DPO@ceg-uk.com

5. Is there anything that could negatively impact your application such as a Criminal Conviction?

Yes (please provide further details below) No

Your enquiry cannot be processed if you do not complete this section.

ONCAMPUS UK North APPLICATION FORM

6. Academic history

Please give details of your current or most recent school, college or university.
Please include full transcripts of all your relevant academic qualifications, translated into English.

Institution

Date from

Date to

Have you previously studied in the UK?

Yes No (If YES, please provide details below)

Type of visa

Tier 4 General

Tier 4 Child

Short Term Study Visa

Other (please specify)

Visa dates (start and end dates)

Have you ever had a visa refusal? Yes No (If YES, please provide details and a brief explanation below)

7. Details of course(s) for which you wish to apply

Please give details of the **ONCAMPUS** programme for which you are applying. Please also state the subject and study level you are aiming for (undergraduate or Master's degree) alongside the proposed year of study.

University degree you wish to progress to – e.g. BA (Hons) Business Management

ONCAMPUS Programme:

Undergraduate Foundation Programme

Business Engineering and Physical Sciences Humanities and Social Sciences

Life Sciences

Medicine Undergraduate Foundation Programme

Master's Foundation Programme

Business

Date you want to start the programme:

June 2020 Sept 2020 January 2021 March 2021

Number of terms you want to study

8. Student insurance

If you would like our Student Cover insurance included with your offer, please tick the YES box below. Otherwise please tick NO and provide proof of your alternative travel insurance cover when you confirm your place.

Do you require Student Cover insurance? Yes No

9. Under 18 Supplement [Guardianship Students]

Students who will be under the age of 18 when they start an **ONCAMPUS** programme are required to have a UK guardian as a condition of their placement. If you do not have a UK guardian, **ONCAMPUS** can assist in organising a suitable guardian for you through our partner: College Guardians.

Do you require assistance in organising a UK guardian through College Guardians?

Yes No

If NO, please provide proof of alternative adequate cover when you confirm your place.

ONCAMPUS UK North APPLICATION FORM

10. How did you hear about us?

Please indicate how you heard of these courses

Agent Exhibition Family Internet

Other (please specify)

11. Declaration

I declare that I am applying to **ONCAMPUS** as a genuine student and that the information and supporting evidence and academic documents I have provided are true copies. I understand that by signing this declaration I have read, understood and agreed to the terms and conditions and fees of study at **ONCAMPUS** UK North as outlined on the **ONCAMPUS** website www.oncampus.global/terms and agree to comply with UKVI regulations at the time of application and during my course of study.

If you do not have access to the website or would like a written copy of the conditions of enrolment, you can request these from **ONCAMPUS** Central Admissions at admissions@oncampus.global

We would like to send you information about services relevant to **ONCAMPUS** students and your stay in the UK if you are happy to receive such information.

I am happy to receive information about **ONCAMPUS** products and offers by:

Email Telephone Text message Social Messaging Social Media

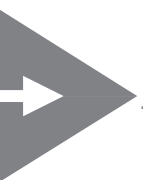
Signature of applicant

Date

Parent or guardian signature
(if applicant is not the fee payer or is under 18)

Date

If you wish to stop receiving marketing communications at any time then please click the unsubscribe option in any email received or alternatively please email cegmarketing@ceg-uk.com. For further information on how **ONCAMPUS** processes your personal data please see our Privacy Policy <http://www.cambridgeeducationgroup.com/about-us/privacy-policy.htm>



Checklist

Before sending the application, please ensure you have:

- Completed the application form in full and signed it

- Enclosed your academic qualifications

- Enclosed a copy of your passport and copies of previous UK visas

- Enclosed copies of transcripts for all your relevant qualifications (with certified English translated copies if in any other language)




- Provided an explanation of any gaps in your academic record e.g. CV (if applicable)

- Enclosed a certificate for a Secure English Language Test such as IELTS

- Read the Student Cover insurance policy document (if choosing this option) at www.oncampus.global/insurance, or if not choosing Student Cover that you have included proof of alternative insurance



Follow our latest news

-  facebook.com/oncampusglobal
-  instagram.com/oncampus_global
-  twitter.com/oncampusglobal

HEAD OFFICE

Cambridge Education Group
 50/60 Station Road, Cambridge,
 CB1 2JH, United Kingdom
 Telephone: +44 (0)1223 345698
 Email: admissions@oncampus.global
 Web: www.oncampus.global

CENTRE ADDRESS

ONCAMPUS UK North
 Kirkham Building
 University of Central Lancashire
 Bhalok Street
 Preston PR1 2XQ



www.carbonbalancedprinter.com
 Healeys Print Group - Reg. 2108

Information in this brochure is correct at time of issue in November 2019. ONCAMPUS and the University Partner reserve the right to alter, reschedule or close courses which do not remain viable; students will be informed. Please check our website at www.oncampus.global for updated information.



ONCAMPUS
UK NORTH

Visit www.oncampus.global

