



Curtin University

STUDY AT CURTIN

2020 INTERNATIONAL STUDENTS GUIDE

Make tomorrow better.



international.curtin.edu.au



The land on which Curtin Perth is situated has belonged to the Aboriginal Whadjuk Nyungar people for thousands of years and is now a place of learning for all people.

Curtin University acknowledges the Nyungar people as the traditional owners of the land, and pays respect to their vibrant culture and the leadership of the Elders past, present and future.

IN THIS GUIDE

Welcome to Curtin.....	2
A global education.....	4
Experience Perth.....	6
Curtin Perth.....	8
Accommodation.....	10
Top things to do on campus.....	12
Get the Curtin edge.....	14
Learning reinvented.....	16
Research excellence.....	18
Undergraduate entry requirements.....	20
Undergraduate: single degrees.....	22
Undergraduate: double degrees.....	28
Postgraduate entry requirements.....	32
Postgraduate: single degrees.....	34
Postgraduate: double degrees.....	41
Research entry requirements.....	42
Research degrees.....	44
Scholarships.....	46
Fees and admission criteria.....	47
Applying to Curtin.....	48

ACADEMIC CALENDAR

SEMESTERS 2020*

	SEMESTER 1 2020	SEMESTER 2 2020
Applications close	Two weeks before orientation*	
Orientation Week	17–21 February	20–24 July
Semester starts	24 February	27 July
Semester ends	19 June	20 November

*Application closing dates and orientation dates are subject to change and may vary depending on the course. Dates are for Perth campus only. Contact other campuses directly for details.

This publication is available in alternative formats on request.

Disclaimer and copyright information

Information in this publication is correct as at September 2019 but may be subject to change. In particular, the University reserves the right to change the content and/or method of assessment, to change or alter tuition fees of any unit of study, to withdraw any unit of study or program which it offers, to impose limitations on enrolment in any unit or program, and/or to vary arrangements for any program, including the School within the University through which the program is offered.

This material does not purport to constitute legal or professional advice. Curtin accepts no responsibility for and makes no representations, whether express or implied, as to the accuracy or reliability in any respect of any material in this publication. Except to the extent mandated otherwise by legislation, Curtin University does not accept responsibility for the consequences of any reliance which may be placed on this material by any person.

Curtin will not be liable to you or to any other person for any loss or damage (including direct, consequential or economic loss or damage) however caused and whether by negligence or otherwise which may result directly or indirectly from the use of this publication.

International students

International students studying in Australia on a student visa can only study on campus and full-time, and there are also specific admission criteria that must be met. For important updates to the information in this publication, including the latest course and fee information, please visit international.curtin.edu.au.

© Curtin University 2019.

Except as permitted by the Copyright Act 1968, this material may not be reproduced, stored or transmitted without the permission of the copyright owner. All enquiries must be directed to Curtin University.

Published by Curtin University 2019.

CRICOS Provider Code 003011

WELCOME TO CURTIN

Start your career with our globally recognised courses and extensive industry connections. You'll be immersed in technology-rich environments and inspired by new ideas, creativity and high-impact research.

When you choose Curtin, you are choosing an innovative, global university known for its high impact research, strong industry partnerships and commitment to producing career-ready graduates who aspire to make tomorrow better.

With campuses in Western Australia, Malaysia, Singapore, Dubai and Mauritius, Curtin is a truly international university that celebrates diverse ideas, skills and cultures.





Ranked in the top one per cent of universities worldwide.
Academic Ranking of World Universities 2018



95% of research output rated world standard or above
Excellence in Research Australia 2018



TOP 51-100 in Architecture/Built Environment, Education, Civil and Structural Engineering and Sports-related subjects.
QS World University Rankings by Subject 2019

**TOP
40**

Top 40 in the world for Earth and Marine Sciences
QS World University Rankings by Subject 2019



#2 in the world in Mineral and Mining Engineering
QS World University Rankings by Subject 2019



THE ABERDEEN-CURTIN ALLIANCE

The Aberdeen-Curtin Alliance was established in early 2017, combining 500 years of academic strength, history and tradition at Scotland's University of Aberdeen with the ambition and innovation of Curtin University.

A GLOBAL EDUCATION

From tailored study tours to professional internships and short courses, you have access to a large range of international opportunities to gain a truly global educational experience.

CURTIN CAMPUSES

We are internationally connected, with campuses located across five countries and partnerships with more than 130 tertiary education institutions worldwide. You'll receive a globally relevant education that encourages you to develop intercultural awareness, visit other countries and add international experience to your résumé.

CROSS-CAMPUS

Our academic programs are the same across all Curtin campuses, so if your course is available at a different location, you can study part of your course on another campus easily – with no interruption to your studies.

EXCHANGE AND STUDY ABROAD

You can choose to go on a short-term program, undertake an international internship, engage in a volunteer program or challenge yourself by going on an exchange to one of our many partner universities in Africa, Asia, Europe, North America or South America.

FINANCIAL ASSISTANCE

You may have access to travel grants and loans, including scholarships and travel bursaries to help with your travel costs.

studyabroad.curtin.edu.au

DUBAI

At Curtin University Dubai you'll study in a city famed for its luxury lifestyle, architecture and geographical importance. The campus provides flexible access to highly regarded programs for students in the Middle East, India, Africa and Central Asia.

MAURITIUS

Two thousand kilometres off the south east coast of Africa, the tropical island of Mauritius blends cultures from Europe, Africa and Asia. Here you'll receive an internationally recognised education and can sample a variety of exciting leisure activities and sports.

SINGAPORE

Singapore is one of the world's most cosmopolitan cities and one of the major economic hubs of Asia. Curtin Singapore is the perfect place to immerse yourself in the world of international business and commerce or you could choose to study mass communications or nursing here.

MALAYSIA

Located near the city of Miri, Sarawak, on the island of Borneo, Curtin University Malaysia has a beautiful garden campus nestled between the world's oldest rainforest and the South China Sea. You can enjoy warm weather all year, indulge in the local culture and food, and discover the area's natural wonders.

KALGOORLIE

Curtin Kalgoorlie puts Curtin students in the heart of WA's historic mining region.

PERTH

Perth is a stunning, vibrant and multicultural city and the ideal place to mix study with sports, activities, dining and relaxation.

Curtin Perth is located just six kilometres from the city centre. It is a place of inspiration, with technology-rich learning spaces, high-impact research and a wide range of courses that prepare you for your future career.

es
or





EXPERIENCE PERTH

Situated on the beautiful west coast of Australia, Perth is a safe city with a low crime rate and an affordable cost of living.

SHOPPING AND CULTURE

The city centre is home to Elizabeth Quay, colourful shopping malls, the Art Gallery of Western Australia, Yagan Square – a community space reflective of both culture and history – as well as many beautiful parks and gardens.

FOOD AND DRINK

Cafés and restaurants are peppered throughout the city, offering cultural cuisine from around the world.

The nearby historic Fremantle markets are a major tourist attraction as is the Swan Valley with its fusion of wine, food, art, scenery and nature.

NATURE AND WILDLIFE

Close to the city centre is the magnificent Kings Park, which showcases more than 3,000 species of flora. Perth Zoo houses many Australian animals such as kangaroos and koalas. Rottnest Island is home to quokkas, while dolphins splash in the Swan River and surrounding ocean.

AQUATIC AND COASTAL

Breathtaking beaches with pristine sand are located within easy reach of the city. You can try different watersports, cycle along the oceanside pathways, and enjoy eating fish and chips by the ocean.

ENTERTAINMENT

The city hosts domestic and international cricket and football competitions as well as music concerts, live entertainment, festivals and performance arts.

LOCATION

Perth has a domestic and an international airport, and is located in the same time zone as Hong Kong, Singapore, Beijing and Kuala Lumpur.

TRANSPORT

The Perth metropolitan area is very well serviced with bus, train and ferry public transport services and an extensive road network. The international airport is just a 20-minute drive from the city.

COST OF LIVING

Perth is more affordable than other major cities in Australia including Sydney, Melbourne, Brisbane and Adelaide¹, however your daily living costs will vary according to your interests.

If you have school-aged children, your children may be eligible to access government schooling at the same subsidised fee levels that apply to local students.

international.curtin.edu.au/pre-departure/family

ACCOMMODATION	(AUD\$) ²
Hostels and guest houses	\$90 to \$150 per week
Shared rental	\$85 to \$215 per week
On-campus	\$152 to \$336 per week ³
Homestay	\$235 to \$325 per week
Rental	\$165 to \$440 per week

OTHER LIVING EXPENSES	(AUD\$) ²
Groceries and eating out	\$80 to \$280 per week
Gas, electricity	\$35 to \$140 per week
Phone and internet	\$20 to \$55 per week

1. Economist Global Intelligence Unit Worldwide Cost of Living 2019

2. studyinaustralia.gov.au (except on-campus accommodation)

3. international.curtin.edu.au/pre-departure/budget



PERTH WEATHER

Perth has a Mediterranean climate



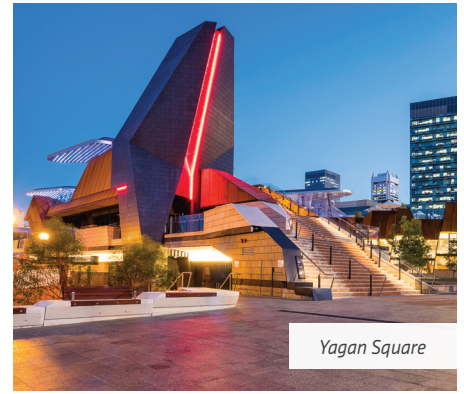
	High / Low (°C)
Summer (December to February)	30° 17.5°
Autumn (March to May)	26° 13.7°
Winter (June to August)	19° 8°
Spring (September to November)	23° 11.7°

source: australia.com

PERTH TIMEZONE



Perth GMT+8



Yagan Square



A Perth street café (Photo: StudyPerth)



Fremantle Markets (Photo: StudyPerth)



See an Australian Football League match at the award-winning Optus Stadium.



Perth Fringe World festival



Kangaroo at Whiteman Park



Margaret River



Get a #quokkaselfie on Rottnest Island



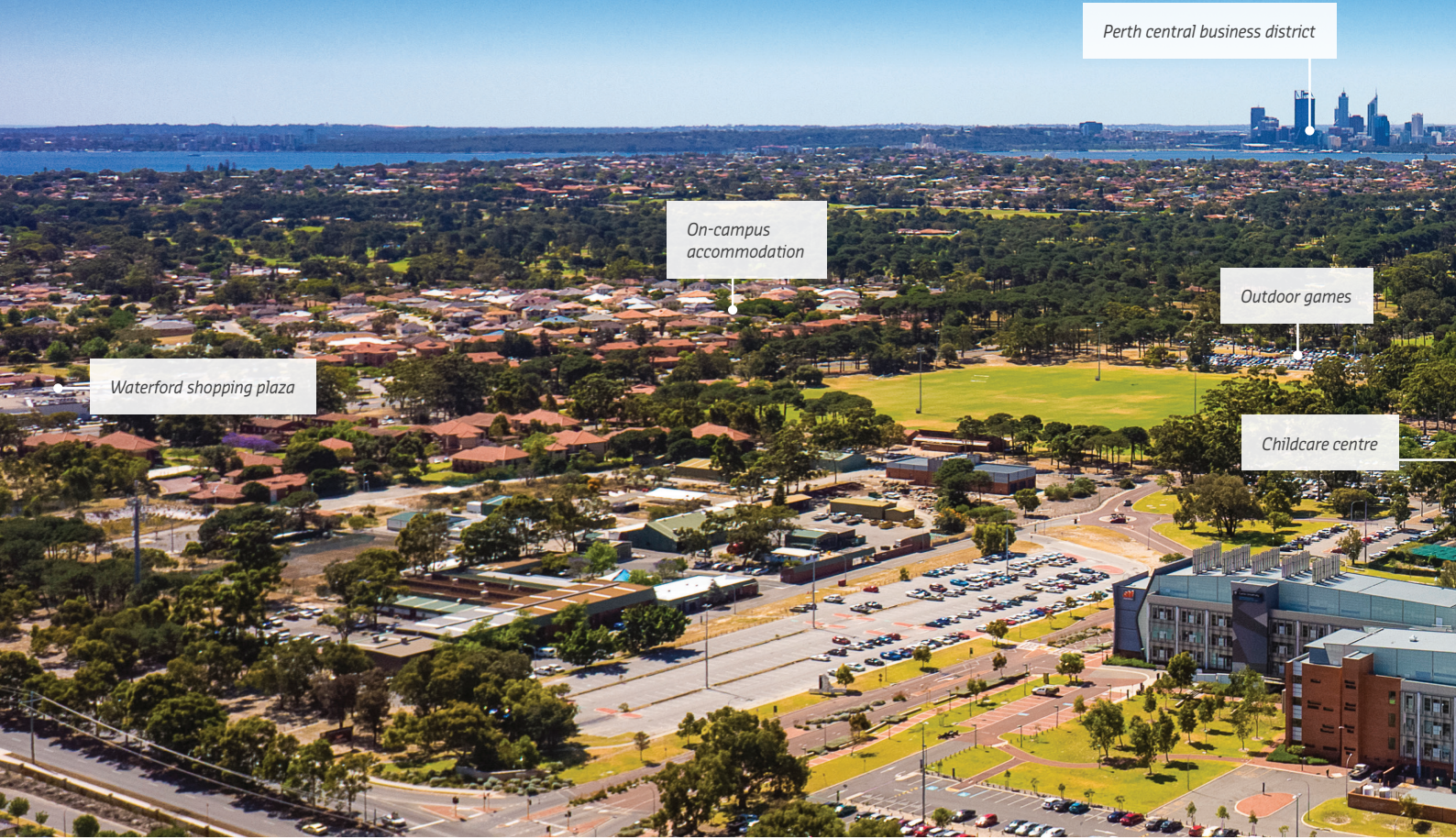
Cottesloe Beach



Elizabeth Quay (Photo: StudyPerth)



Shopping at Forrest Place (Photo: StudyPerth)



CURTIN PERTH

We offer a range of services and facilities to support your study here.

CHILDCARE

The Curtin University Early Childhood Centre is for children under the age of five years. The centre has excellent facilities and a significant amount of staff for each of the children's rooms. Vacancies usually occur at the beginning of each year. We strongly recommend you place your application early with the centre to maximise your chances of gaining a place for your child.

COURSE ADVICE

Located on campus, Curtin Connect offers advice on courses, applications, enrolment, getting your ID card and organising your timetable.

LEARNING SUPPORT

We provide free workshops and online programs to help you improve your study skills and develop your reading, listening and speaking skills. You can also access UniPass, a facilitated academic assistance program that connects you with a senior student studying the same course as you.





HEALTH AND WELLBEING SERVICES

Curtin has a campus-based physiotherapy clinic and a medical centre where you can see a doctor, occupational therapist, social worker, psychologist or physiotherapist. Our confidential student wellbeing hotline and email is a good place to start if you need advice or help, or are not sure where to find the support you need.

RETAIL

On-campus bookshops stock a wide variety of textbooks, stationery, newspapers, magazines, novels, cards, computer equipment, art supplies and safety equipment – including lab coats and safety glasses. There are printing and binding services, dry cleaning and an on-campus travel agency.

SECURITY AND PERSONAL SAFETY

To make sure the campus remains a safe and friendly place for all students, we provide a 24/7 security patrol, after-hours security escort, campus courtesy bus, emergency telephone stations, SafeZone (a free student safety app), secure-card building access and well-lit, safe pathways.

TECHNOLOGY

Wi-fi can be accessed across the campus and there are many computer labs equipped with printing stations, scanners, graphics workstations, smart boards and current software for you to use. We offer Fill Up Your Laptop cells where you can recharge your phone and laptop. There are a number of places on campus where you can recharge your devices.

TRANSPORT

Curtin has its own bus interchange where you can access transport routes that can take you to the city centre and the surrounding metropolitan area. Transperth travel concessions are available to international students. We also provide a free hail-and-ride bus service for students living in the suburbs surrounding the campus.



ACCOMMODATION

If you are moving to Perth, you may choose to live on campus in university housing. If you prefer to live off-campus, we can help you find share housing, boarding opportunities or single rentals.

LIVING ON CAMPUS

We offer more than 1,000 places to stay at our Perth campus. You'll enjoy comfortable and tidy single or shared accommodation, free wi-fi and have the opportunity to meet and interact with people from all over the world.

Supermarkets, shops, restaurants, cafés and a post office are within walking distance, while 24-hour Curtin security patrols keep residents safe.

Due to high demand, we recommend you apply for student housing as soon as you apply to study at Curtin. Priority is given to students who are new to Perth. View the accommodation gallery and find out more at:

students.curtin.edu.au/campus/accommodation

LIVING OFF CAMPUS

Off-campus accommodation allows for greater independence and privacy, making it an ideal option for mature-age students and those with families.

There is a range of accommodation options available, including rental opportunities, boarding and shared housing. Prices will vary depending on the type of accommodation you choose and its location.



Stroll through gardens at George James House



Waterford Plaza shopping complex is a short walk from campus and student housing



George James House



Bedroom - George James House



Lounge area - George James House



Dining area - George James House

TOP THINGS TO DO ON CAMPUS

There is a sense of community both in and out of the classroom, with collaborative learning spaces and outdoor leisure areas with beanbags, outdoor games, hammocks and food to enjoy in-between classes.

CURTIN EXPERIENCES

Curtin Experiences offers a range of activities that will keep you active every semester. Meet new friends and learn something new in a variety of dance, martial arts, sport and fitness classes. Popular classes include: learning to surf, hip-hop dance, Pilates and Muay Thai kickboxing classes. Jump in and try something new!

stadium.curtin.edu.au/sport/experiences

FOOD

Food choices include cafés (two of which offer Halal food) and a tavern that regularly stages live music. Pop-up food trucks in campus hotspots offer food from around the world.

GUILD

The Curtin Student Guild is student-run and represents student interests on University boards and committees. It offers social and welfare services, plus lots of extracurricular activities, such as the Guild Ball, tavern shows, multicultural week and market days.

LIBRARY

The library is technology-rich with an open and friendly environment. There are PCs and iMacs for you to use with a vast array of software. Laptops are available for short-term loan and there are charging facilities for all your devices.

You can book a study room when you're working on group assignments or take a 20-minute power nap in one of our sleep pods installed on level 3. The library is open 24-hours a day during semester and we encourage you to go on a library tour to become familiar with library facilities, services and resources. Tours are conducted at allotted times during Orientation week.

SPORT AND RECREATION

Curtin Stadium is the home of sport, fitness, recreation and events on campus, with a main gym, women's gym, large group fitness area, indoor cycling studio, sports hall and multi-purpose courts available for hire.

CLUBS

There are 16 affiliated sports clubs across a number of sports, catering for all levels of skill and experience. Sporting clubs are a fantastic way to learn a new sport, represent your university in sporting competition and make new friends.

stadium.curtin.edu.au/sport/clubs

SOCIAL SPORT

Curtin Social Sport is a weekly social sporting competition for all levels. There are various seasons throughout the year, and seven different sports across 15 categories – with open, women's, men's and mixed, there is something for everyone!

stadium.curtin.edu.au/sport/social





Perth's weather is perfect for outdoor activities between classes



Take a nap in a sleeping pod



Enjoy daily entertainment



Curtin library



Get involved with a student club or sporting team



Food trucks bring international cuisine to campus every day of the week



Keep fit at Curtin Stadium



Giant-sized games

GET THE CURTIN EDGE

Access to leadership programs, specialist facilities, industry networks and placements provide opportunities to gain practical skills and experiences, broaden your career prospects and get a competitive edge in the job market.

GAIN INDUSTRY EXPERIENCE

Experiential learning is highly valued by employers. You will benefit from Curtin's strong links to business and industry, working on real projects and research initiatives, undertaking internships and attending events and networking opportunities.

During your course, you can undertake work integrated learning activities and apply your knowledge to challenges in community and industry settings. You could visit industrial sites or plants, complete real projects in collaboration with industry, participate in laboratory work or go on field trips.

INTERNSHIPS

Industry placements are offered in many degrees, providing professional work experience while you study. Depending on your course, you could intern with one of Curtin's many industry partners, local or national businesses, undertake a healthcare clinical placement or take a practicum in a school.

WORK WHILE STUDYING

Your student visa allows you to work up to 40 hours per fortnight in Australia when your course is in session and unlimited hours during semester breaks.

CAREER SUPPORT

We provide employment and career planning support through our valuable careers centre including writing job applications and résumé writing. You can also access our Global Careers database, and view hundreds of job opportunities across the world based on your course of study, citizenship and individual working rights.

globalcareers.curtin.edu.au

LEADERSHIP SKILLS

At the Curtin Leadership Centre, you can grow your skills in public speaking, teamwork, project management and self-awareness, and apply them to projects both at Curtin and in the community.

curtin.edu.au/experience/leadership

RECOGNITION

Our unique Curtin Extra Certificate formally lists and recognises leadership and work-integrated learning experiences that you have taken alongside your course.

VOLUNTEERING OPPORTUNITIES

If you're keen to help others, Curtin Volunteers! provides volunteering programs that enrich your student experience and develop your capabilities while also benefiting communities throughout Western Australia.

curtin.edu/cv

INDUSTRY CONNECTIONS

- BHP
- CCIWA
- Cisco
- Chevron
- Hassell
- Huawei
- NASA
- Optus (SingTel)
- Tencent
- Woodside

MOONSHOT PROJECT IN SILICON VALLEY

Curtin students Zac Farrow and Willem Poot were tasked with transforming a world-changing idea into a workable prototype at the Silicon Valley Innovation Academy in the US for seven weeks. Their invention, a biosensor that quantifies mental health, impressed researchers so much it was sent to a laboratory to be developed.

curtin.edu/siliconvalley

BEIJING WORKSHOP

Twenty-eight students from Curtin's School of Design and the Built Environment travelled to Beijing for the international Design Day Marathon to design a new technology or internet experience for the elderly.

curtin.edu/designday

A SUMMER IN EUROPE

Joycelyn Tang studied in Belgium as part of Curtin's Ghent summer law program. Ghent University is considered to be one of Europe's most prominent law schools. Joycelyn has since joined the Supreme Court as a research associate.

CROSS-CULTURES IN SHANGHAI

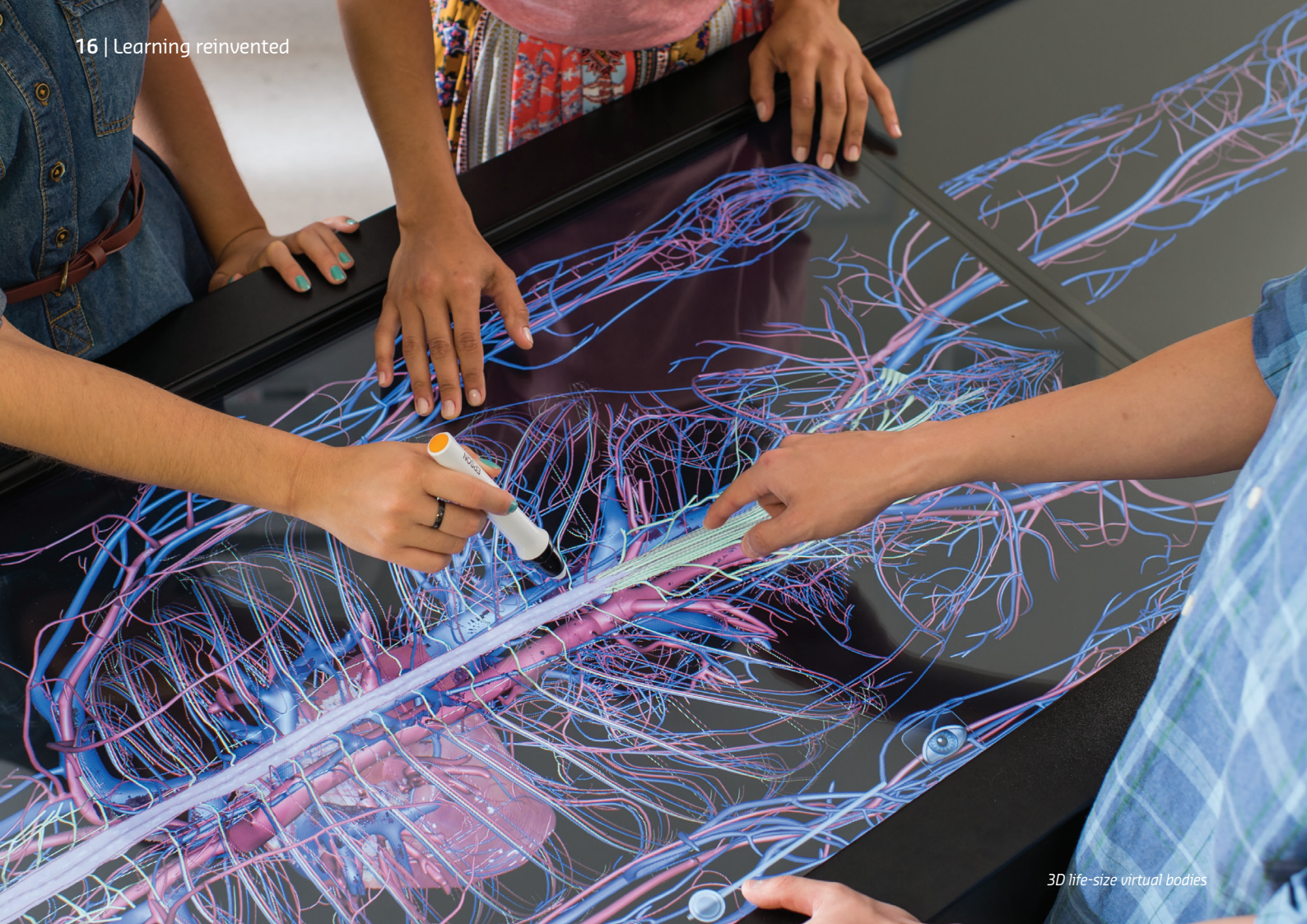
Health Sciences students set off for the bustling metropolis of Shanghai to spend four weeks working in Shanghai's health care system. It proved an invaluable opportunity to see how healthcare is delivered in a different country and to learn innovative strategies.

curtin.edu/hs-shanghai



Curtin Volunteers!





3D life-size virtual bodies

LEARNING REINVENTED

Our curriculum, learning experiences and delivery methods are highly responsive to the changing needs of industry and careers.

YOUR LEARNING EXPERIENCE

Your learning will be practical, interactive and stimulating. Conventional teaching methods have been replaced by a suite of modern and digital techniques comprising on-campus and online lectures, flipped classes, real-world problem solving and challenges.

You are able to join face-to-face workshops and tutorials through high-end video and web technologies; explore concepts, theories and alternative viewpoints through social media think tanks; and participate in game-based challenges to practice skills and test your knowledge. You will have opportunities to study at partner universities, undertake work-integrated learning, acquire leadership experience and gain Indigenous cultural awareness.

EASY ACCESS TO LEARNING MATERIALS

You'll use online resources and systems throughout your study at Curtin.

BLACKBOARD: GETTING YOUR LEARNING MATERIALS ONLINE

Through Blackboard, our online learning management system, you can access your unit outlines, staff contact information, learning materials and interactive tools, as well as your assessment details, submissions and grades.

curtin.edu/blackboard

ILECTURE: REVIEWING YOUR LECTURES ONLINE

The iLecture system is a quick and easy way for you to access recordings of your unit lectures or other video-based resources prepared by your lecturers.

curtin.edu/ilecture

OASIS

OASIS is the online student portal where you can access your enrolment details, timetable, student email, blackboard, exam results, library catalogues, databases and links to Curtin's facilities.

oasis.curtin.edu.au

PLANNING YOUR TIMETABLE

Even before you come to Curtin, you can plan your potential class schedule on our website, and try different unit combinations to find a timetable that best suits you. You can also view class information for any of your timetabled units.

timetable.student.curtin.edu.au

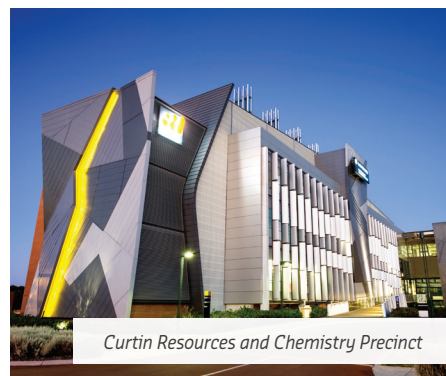




The Agency



Astrodome



Curtin Resources and Chemistry Precinct



Curtin Engineering Pavilion



Media production studio



Simulated hospital ward

CLASSROOMS LIKE WORKPLACES
 Immerse yourself in technology-rich learning environments that replicate real workplaces, giving you true-to-life experiences.

3D life-size virtual bodies
 Cut, pinch, rotate and zoom in on a virtual human body with our anatomage tables.

The Agency
 Experience first-hand how major brands monitor their digital presence at our social media command centre.

Astrodome
 Featuring a live feed from a 12-inch Meade Refractor telescope, you'll have a direct link to national and global astronomy projects.

Curtin Resources and Chemistry Precinct
 This magnificent precinct features four floors of open-plan laboratories and an interior design that invites collaboration, networking and interactive learning.

Curtin Engineering Pavilion
 The innovative design and technologies in the spacious Curtin Engineering Pavilion Complex double up as hands-on learning tools for engineering students.

Green Electric Energy Park (GEEP)
 The GEEP laboratory enables you to conduct advanced experiments and research projects on various types of renewable energy sources.

Hayman Theatre
 Discover the art of professional public theatre production in our well-equipped boutique theatre, which stages up to 25 productions per year.

Media production studio
 Make your mark using interactive media facilities with HD and 4K-compatible technology and industry-standard digital systems for recording and post-production editing and sound mixing.

Moot Court
 Take part in simulated court proceedings at our high-tech moot court facility in central Perth and practise your debating and legal skills in global student law competitions.

Simulated hospital ward
 Replicating a real hospital in Perth, our simulated hospital ward features acute medical and surgical areas, a critical-care area, a paediatric area and a general simulation room.

Trading Room
 You're at the centre of global finance in our stock market trading room with Thomson Reuters terminals, international news services and live stock prices.



Hayman Theatre



Green Electric Energy Park (GEEP)



The Jeanette Hackett Moot Court



Trading Room

RESEARCH EXCELLENCE

Curtin's global reputation for research excellence continues to escalate. In Australia, 95 per cent of our research output is rated world standard or above. Importantly, Curtin delivers a balance between research that solves defined problems for industry and society, and research that pushes the boundaries of understanding.

A game changer for space exploration

The Curtin Institute of Radio Astronomy is paving the way for the world's most powerful telescope, the Square Kilometre Array (SKA), with its operation of the Murchison Widefield Array SKA-precursor telescope and SKA-low aperture array verification systems.

Leading research through technology

Researchers in the Curtin Institute for Computation are supported by the Pawsey Supercomputing Centre, which houses one of the most powerful research supercomputers in the southern hemisphere.

Focus on the elderly

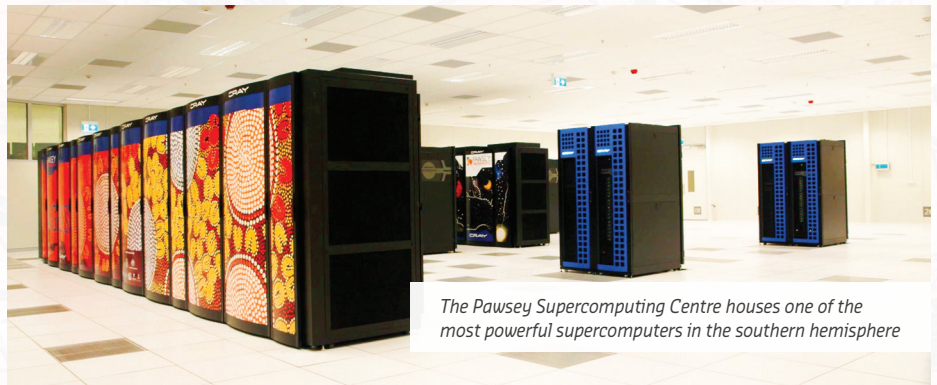
The Curtin Health Innovation Research Institute hosts approximately 200 biomedically-focused researchers who are dedicated to finding strategies to prevent and treat diseases that commonly occur in older Australians.

Building a safer future

Curtin research supports the Royal Australian Navy in areas such as hydrodynamics, remote sensing and satellite systems, transport logistics, corrosion science, subsea engineering, data modelling and maritime policy.



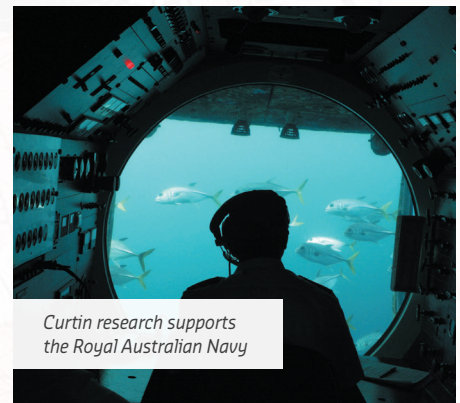
The Murchison Widefield Array is a precursor to the world's most powerful radio telescope



The Pawsey Supercomputing Centre houses one of the most powerful supercomputers in the southern hemisphere



Biomedical researchers are helping older Australians



Curtin research supports the Royal Australian Navy





UNDERGRADUATE ENTRY REQUIREMENTS

For admission to Curtin, you must satisfy minimum academic entry requirements as well as English competency requirements. Entry is competitive and levels higher than the minimum may be required for admission to some courses.

GENERAL ENGLISH LANGUAGE ENTRY REQUIREMENTS

ENGLISH LANGUAGE TEST	SCORE
IELTS (International English Language Testing System) Academic - Listening, Reading, Writing, and Speaking - Overall band score	6.0 6.5
GCSE/GCE O-level English/English Language/English Literature/General Paper/ESL	Grade C
GCE Advanced Subsidiary Level English/English Language/English Literature/General Paper/ESL	Grade C
GCE A-level English/English Language/English Literature/General Paper/ESL	Grade E
SPM 1119 English	Grade C6
TOEFL (TEST OF ENGLISH AS A FOREIGN LANGUAGE) iBT Reading Listening Speaking Writing	79 (overall) 13 13 18 21
Pearson Test of English – Academic (PTE-A) - Listening, Reading, Writing, and Speaking - Overall band score	58 (overall) 50
Occupational English Test (OET)	300 overall and 250 in listening, reading, writing and speaking.
WACE Stage 2 or 3 English, Literature or English as an Additional Language or Dialect (EALD)	Scaled score of 50
Western Australian Universities' Foundation Program (WAUFP), English Language and Australian Cultural Studies (ELACS)	50%
English as a Second Language (ESL)	Pass mark varies each year (normally 50% or above)
South Australian Certificate of Education (SACE) in the subject of English as a Second Language	Score 10 - Band A, B or C
Hong Kong Certificate of Education Examination (HKCEE) English OR Hong Kong Diploma of Secondary Education (HKDSE) English as a core subject	Grade of 4
C2 Proficiency (Formerly known as Cambridge English: Proficiency (CPE)) - Listening, Reading, Writing, and Speaking - Overall score	190 176
C1 Advanced (Formerly known as Cambridge English: Advanced (CAE)) - Listening, Reading, Writing, and Speaking - Overall score	176 169
Successful completion of Curtin's English Language Bridging (ELB) course	Grade B-
Successful completion of one semester of full-time study of a bachelor degree course at an Australian university	
Successful completion of the full first year of a bachelor degree at a recognised university in NZ, UK, Canada, US, Republic of Ireland, Singapore or South Africa.	
Successful completion of any Australian university English language proficiency program of one semester (six months) full-time in duration or more, that satisfies degree entry requirements at those universities	

COURSES WITH OTHER ENGLISH LANGUAGE REQUIREMENTS

COURSE	IELTS (INTERNATIONAL ENGLISH LANGUAGE TESTING SYSTEM) ACADEMIC			TOEFL (TEST OF ENGLISH AS A FOREIGN LANGUAGE) iBT
	Writing and speaking	Reading and listening	Overall band score	TOEFL iBT
Bachelor of Business Administration Bachelor of Commerce Bachelor of Engineering (Honours) Bachelor of Science (Actuarial Science) Bachelor of Science (Science) Bachelor of Technology (Computer Systems and Networking)	6.0	6.0	6.0	68 overall Reading: 13 Listening: 13 Speaking: 18 Writing: 21
Bachelor of Education (Early Childhood Education, Primary Education, Secondary Education)	Writing: 7 Speaking: 8	Reading: 7 Listening: 8	7.5	105 overall Reading: 24 Listening: 28 Speaking: 26 Writing: 27
Bachelor of Science (Medical Radiation Science, Occupational Therapy, Oral Health Therapy, Pharmacy, Physiotherapy, Social Work, Speech Pathology)	7.0	7.0	7.0	99 overall Reading: 24 Listening: 24 Speaking: 23 Writing: 27
Bachelor of Science (Nursing)*	6.5	6.5	7.0	94 overall Reading: 20 Listening: 20 Speaking: 20 Writing: 24

* From July 2020, nursing courses will require an IELTS Academic overall band 7.0 with a minimum of 7.0 in each band or equivalent required.

MINIMUM ACADEMIC ENTRY REQUIREMENTS

COUNTRY	QUALIFICATION AND MINIMUM ENTRY REQUIREMENTS
Australia	Completion of Australian Year 12 (VCE, HSC, QCE, WACE, SACE, TCE, NTCE, ACT) with a minimum Australian Tertiary Admission Rank (ATAR) of 70; and a scaled mark of at least 50 in English, Literature, or English as an Additional Language or Dialect.
Bangladesh	Completion of the Bangladesh Higher Secondary Certificate (HSC) with a minimum Grade Point average of 4.0 (70–79%). Separate evidence of English competence is required.
Botswana	Refer to United Kingdom OR successful completion of part one (first two years) of a degree at University of Botswana. English competence will be assessed individually.
Brazil	Successful completion of the first year of a four-year bachelard/bacharelado or licenciatura/licenciado (degree) or titulo profesional (professional title) from a recognised institution and English competence.
Brunei	Three O-level passes (minimum grade C) and two A-level passes (minimum five points) in the Brunei Cambridge General Certificate of Education (GCE), and English competence.
Canada	Completion of a provincial high school diploma with an average of 60 or better in Grade 12, and including a grade of 60 or better in Year 12 English (except Quebec where separate evidence of English is required).
China	Successful completion of the National College Entrance Examination (NCEE or also known as Gao Kao) and obtain an aggregate of the required individual subjects which is equivalent to 67% of the overall maximum score, or a grade of 322/480, 422/630, 503/750, 543/810 or 603/900 with separate evidence of English competence required OR one year of a bachelor degree at a recognised university and English competence.
Germany	Completion of the Abitur/Zeugnis der Allgemeinen Hochschulreife or Reifezeugnis (secondary school leaving certificate) at Gymnasium with an average grade of 4 including English or separate English competence OR successful completion of the Fachgebundene Hochschulreife with separate evidence of English competency required.
Hong Kong	Completion of the Hong Kong Diploma of Secondary Education (HKDSE) with a point score of 15 from the best five subjects with at least a grade of 4 in English language or with separate evidence of English.
India	Successful completion of the All India Senior School Certificate awarded by the Central Board of Secondary Education (CBSE) or Indian School Certificate (ISC) awarded by Council with a grade average of 60% in the best four subjects and 60% in English or separate evidence of English; OR successful completion of Higher Secondary School Certificate awarded by one of the recognised Higher Secondary Education Boards with a grade average of 65% with separate evidence of English. Grade average requirement may vary by course.
Indonesia	Successful completion of Ijazah Sekolah Menengah Atas (SMA) (Certificate of Completion from Academic Senior Secondary School) with an overall average grade of at least 80%, with evidence of passing the Ujian Nasional (National Examinations) in meeting Curtin's minimum academic entry requirement.
Iran	Successful completion of the first year of a four-year bachelor degree at a recognised institution and English competence OR successful completion of a two-year associate degree or higher diploma (after completion of National High School Diploma) from a recognised institution and English competence.
Japan	Successful completion of first year of a Gakushi (bachelor degree) at a recognised institution and English competence OR Certificate of Graduation awarded by a recognised technical/vocational college and English competence.
Kenya	Successful completion of the first year of a bachelor degree at a recognised institution and English competence.
Korea	Completion of High School Diploma with a score of 300 (75%) in the National University Entrance Examination (College Scholastic Ability Test) (CSAT); separate evidence of English competence is required OR completion of one year of a four-year bachelor degree at a recognised university and English competence.
Malaysia	Three credit passes at SPM level and two passes in STPM (minimum 5 points) and English competence OR completion of the Malaysian Independent Chinese Secondary Schools Unified Examination Certificate (UEC) (Senior Middle Level) with 15 points aggregated from the best five academic subjects and English competence.
Mauritius	Three O-level passes (minimum grade C) and two A-level passes (minimum five points) in the Cambridge Higher School Certificate and grade C in O-level English or English literature OR full International Baccalaureate with a minimum total of 24 points from six subjects at one sitting. Three of the subjects must be at the higher level and one of the six subjects should be English.
Myanmar	Successful completion of one year of a four-year bachelor degree or two years of a three-year bachelor degree at a recognised institution with separate evidence of English competence.
Nepal	Successful completion of Higher Secondary Education Board Examination (HSC) awarded by the Higher Secondary Education Board with at least 68% of the Grand Total score. Separate evidence of English competence is required.
Norway	Completion of the Vitnemål For Videregående Opplæring (Leaving Certificate from Upper Secondary School) with an average grade of 3 plus a grade of 4 or better in English.
Oman	Successful completion of one year of a bachelor degree at Sultan Qaboos University and English competence OR completion of a recognised diploma at a public institution and English competence.
Pakistan	Completion of the Pakistan Higher Secondary Certificate/Intermediate Certificate with at least an average of 75% of the total marks (770 out of 1100), separate English competency is required. This qualification does not satisfy subject prerequisites.
Philippines	Completion of Philippines High School Diploma (Grade 12) (Academic track) with a final result of 80%, and a total score of at least 1000 out of 1600 in the SAT from the same sitting, with a minimum score of 400 in Evidence-Based Reading and Writing, and Math Section. Separate evidence of English competence is required.
Russia	Successful completion of one year of a Diplom ob okonchaniy vysshego uchebnogo zavedeniya (Diploma of Specialist) at a state institution or fully accredited private institution where separate evidence of English competence is required.
Saudi Arabia	Successful completion of the first year of a four-year bachelor degree at a recognised institution and English competence OR successful completion of a two year diploma or associate degree at a public university and English competence.
Singapore	Three GCE O-level passes (minimum grade C) OR completion of the Integrated Program PLUS two GCE A-level passes (minimum 5 points). Grade C in O-level English or English literature OR separate evidence of English competence.
South Africa	Completion of the Senior Certificate (by Matriculation Board or the South African Certification Council) with an average grade of C or 5 in six subjects (excluding Life Orientation), including a grade of C or 5 in English OR Matriculation Certificate (issued by the Matriculation Board) with an average mark of at least 65% in six subjects, and three subjects at the higher grade (one of these must be English).
Sri Lanka	Three O-level passes (minimum grade C) and three A-level passes (minimum 5 points) in the Sri Lankan General Certificate of Education (GCE) (excluding General Paper). Grade C in General English or separate evidence of English competence.
Taiwan	Successful completion of the first year of a four-year bachelor degree at a recognised institution and English competence.
Tanzania	Three passes (minimum grade C) in the Certificate of Secondary Education (CSE) examinations of the National Examinations Council of Tanzania (NECTA) and two principal level passes in the Advanced Certificate of Secondary Education (ACSE) (minimum of one C and one D grade). Grade C or better in CSE English or separate evidence of English competence.
Thailand	Successful completion of one year of a bachelor degree at a recognised institution and English competence.
United Arab Emirates	Successful completion of the first year of a degree at United Arab Emirates University and English competence OR successful completion of a diploma or higher diploma at a recognised institution, and English competence.
United Kingdom	Three GCE O-level/GCSE passes and two GCE A-level passes (minimum 5 points). Grade C or better in GCE O-level/GCSE English, English literature or English language, or separate evidence of English competence.
US	A United States High School or a High School Diploma based on a US curriculum with an average grade of B or better in 12th grade and a total score of at least 1000 out of 1600 in the Evidence-based Reading and Writing and Math in the SAT from the same sitting, with a minimum of 400 in each component OR a composite score of 21 or better in the American College Test (ACT) OR successful completion of the first year of a four-year bachelor degree at a regionally accredited institution.
Vietnam	Completion of the Bang Tu tai or Bang Tot nghiép Pho thong Trung hoc (Vietnamese Upper Secondary School Graduation Diploma) with at least 8.00 in the score for graduation evaluation, separate evidence of English competence is required.
Zambia	Refer to United Kingdom OR successful completion of the first year of a degree at University of Zambia or The Copperbelt University, and English competence.
Zimbabwe	Refer to United Kingdom OR completion of five Zimbabwe General Certificate of Education O-level passes and two A-level passes (minimum 5 points) and English competence OR successful completion of the first year of a degree at University College of Rhodesia and Nyasaland, University of Rhodesia or University of Zimbabwe and English competence.

Students from countries not listed should contact Curtin International for further details.

UNDERGRADUATE: SINGLE DEGREES

For the latest course information, visit study.curtin.edu.au.

For important notes on course fees and admission criteria, see [page 47](#).

COURSE NAME	MAJOR	CRICOS CODE	DURATION	INTAKE	INDICATIVE FIRST YEAR FEE (AUD\$)*
BUSINESS, MANAGEMENT AND LAW					
BACHELOR OF BUSINESS ADMINISTRATION	Administration	018007A	3 Years	Feb, Jul	\$29,500
BACHELOR OF COMMERCE*	Accounting	013905G	3 Years	Feb, Jul	\$29,200
	Advertising				\$29,300
	Business Information Systems (Professional)				\$29,400
	Business Information Technology (Professional)				\$29,300
	Business Law				\$29,400
	Economics				\$29,300
	Entrepreneurship				\$29,400
	Event Management				\$29,300
	Finance				\$29,400
	Human Resource Management				\$29,300
	International Business				\$29,300
	Logistics and Supply Chain Management				\$29,200
	Management				\$29,400
	Marketing				\$29,300
	Property				\$29,400
Property Development and Valuation	\$29,300				
Public Relations	\$29,300				
Tourism and Hospitality	\$29,300				
BACHELOR OF COMMERCE (HONOURS)	Honours	078136F	1 Year	Feb, Jul	\$30,000
BACHELOR OF LAWS	Laws	077962B	3 Years	Feb	\$29,400
AGRICULTURE, ENVIRONMENT AND SUSTAINABILITY					
BACHELOR OF ADVANCED SCIENCE (HONOURS)	Agricultural Science	095949E	4 Years	Feb, Jul	\$33,300
	Coastal and Marine Science				
	Environmental Science				
BACHELOR OF AGRIBUSINESS	Agribusiness	029345C	3 Years	Feb, Jul	\$33,300
BACHELOR OF SCIENCE	Coastal and Marine Science	061600D	3 Years	Feb, Jul	\$33,500
	Environmental Science				
BACHELOR OF SCIENCE (HONOURS)	Environment and Agriculture	061491D	1 Year	Feb, Jul	\$33,700
ENGINEERING AND MINING					
BACHELOR OF ENGINEERING (HONOURS)	Chemical Engineering: • Chemical Engineering stream • Oil and Gas stream	072467B	4 Years	Feb, Jul	\$35,100
	Civil and Construction Engineering				\$35,700
	Electrical and Electronic Engineering				
	Industrial and Systems Engineering				
	Mechanical Engineering				
	Mechatronic Engineering				
	Metallurgical Engineering				
	Mining Engineering				
Petroleum Engineering	Feb				
	Feb, Jul				
IT AND COMPUTING					
BACHELOR OF ADVANCED SCIENCE (HONOURS)	Computing	095949E	4 Years	Feb, Jul	\$32,500
	Data Science				\$33,100
BACHELOR OF COMPUTING	Computing: • Computer Science stream • Cyber Security stream • Software Engineering stream	0100817	3 Years	Feb, Jul	\$32,200
BACHELOR OF INFORMATION TECHNOLOGY	Information Technology	0100818	3 Years	Feb, Jul	\$32,200
BACHELOR OF SCIENCE	Data Science	061600D	3 Years	Feb, Jul	\$32,800
BACHELOR OF SCIENCE (HONOURS)	Computer Science	061491D	1 Year	Feb, Jul	\$32,500
BACHELOR OF TECHNOLOGY	Computer Systems and Networking	041280C	3 Years	Feb, Jul	\$34,700

The indicative first year fee is based on the lowest combination of units. Depending on the specific units you choose to study within a course, this fee may increase. All fees are subject to annual increases of no more than five per cent. To calculate unit fees, go to curtin.edu/fee-calculator.

^ Science subjects include tertiary level Biology, Chemistry, Earth and Environmental Science, Human Biology, Integrated Science, Physics or Psychology.

* Some commerce majors can be taken as a double major, which will change the indicative first year fee. For double major combinations, visit study.curtin.edu.au.

INDICATIVE CUT-OFF SCORES										COURSE PREREQUISITES
ATAR (incl. WACE/SACE/HSC/VCE)	WAUFP (CPS)	GCE A-Levels/STPM/ (best of 3 subjects)	HKDSE	IB	Ontario Gr 12	India (CBSE)	India (HSC)	Sri Lanka		
70	53	5	15	24	60%	60%	65%	5		
70	53	5	15	24	60%	60%	65%	5		
N/A	N/A	N/A	N/A	N/A	N/A	N/A	N/A	N/A	A three-year business degree with an overall average grade above 70 per cent.	
90	70	12	23	33	80%	82.5%	85%	12		
95	75	14	25	37	90%	90%	94%	14	Mathematics (including Calculus).	
70	53	5	15	24	60%	60%	65%	5	Mathematics is required. One science subject* is desirable.	
70	53	5	15	24	60%	60%	65%	5	Mathematics is required. One science subject* is desirable. Mathematics is required and Chemistry is desirable.	
N/A	N/A	N/A	N/A	N/A	N/A	N/A	N/A	N/A	High achievement in an appropriate bachelor degree.	
80	59	8	18	28	70%	70%	71%	8	Mathematics (including Calculus) and either Chemistry, Physics or Engineering Studies. Further Mathematics is desirable.	
95	75	14	25	37	90%	90%	94%	14	Mathematics (including Calculus).	
80	59	8	18	28	70%	70%	71%	8	Mathematics (including Calculus).	
70	53	5	15	24	60%	60%	65%	5	Mathematics.	
80	59	8	18	28	70%	70%	71%	8	Mathematics (including Calculus).	
N/A	N/A	N/A	N/A	N/A	N/A	N/A	N/A	N/A	High achievement in an appropriate bachelor degree.	
70	53	5	15	24	60%	60%	65%	5	Mathematics is required. Calculus and Further Mathematics is desirable.	

UNDERGRADUATE: SINGLE DEGREES (continued)

For the latest course information, visit study.curtin.edu.au.

For important notes on course fees and admission criteria, see [page 47](#).

COURSE NAME	MAJOR	CRICOS CODE	DURATION	INTAKE	INDICATIVE FIRST YEAR FEE (AUD\$)*
PHYSICAL SCIENCES AND MATHEMATICS					
BACHELOR OF ADVANCED SCIENCE (HONOURS)	Chemistry	095949E	4 Years	Feb, Jul	\$33,200
	Earth Sciences				\$34,900
	Financial Mathematics				\$31,800
	Industrial and Applied Mathematics				\$32,900
	Molecular Genetics				\$33,700
	Physics				\$33,000
BACHELOR OF SCIENCE	Actuarial Science	038785D	3 Years	Feb	\$31,400
	Applied Geology: • Applied Geology stream • Mining Geology stream • Petroleum Geology stream	003875B	3 Years	Feb, Jul	\$35,500
	Biochemistry	061600D	3 Years	Feb	\$33,200
	Chemistry			Feb	\$33,300
	Extractive Metallurgy			Feb	\$33,400
	Financial Mathematics			Feb, Jul	\$31,700
	Geophysics			Feb, Jul	\$36,200
	Industrial and Applied Mathematics			Feb, Jul	\$32,800
	Medical Radiation Science	088215B	4 Years	Feb	\$36,100
	Mine and Engineering Surveying	061600D	3 Years	Feb	\$35,900
	Mining			Feb	\$34,000
	Multidisciplinary Science			Feb, Jul	\$33,700
	Physics			Feb	\$32,900
	BACHELOR OF SCIENCE (HONOURS)	Actuarial Science	066674A	1 Year	Feb, Jul
BACHELOR OF SCIENCE (HONOURS)	Applied Geology	061491D	1 Year	Feb, Jul	\$38,000
	Chemistry				\$33,700
	Geophysics				\$38,000
	Geographic Information Systems				\$33,700
	Physics				\$33,700
BACHELOR OF SURVEYING	Bachelor of Surveying	003922M	4 Years	Feb, Jul	\$36,000
HEALTH					
BACHELOR OF PHARMACY (HONOURS)	Pharmacy	096304A	4 Years	Feb	\$34,800
BACHELOR OF PSYCHOLOGY	Psychology	041070B	4 Years	Feb	\$37,000
BACHELOR OF SCIENCE	Exercise, Sport Science	077744A	3 Years	Feb	\$37,800
	Health Promotion	003779B	3 Years	Feb, Jul	\$36,800
	Health, Safety and Environment	064468A	3 Years	Feb, Jul	\$36,500
	Health Sciences: • Health Sciences stream	003691K	3 Years	Feb, Jul	\$34,300
	Health Sciences: • Pharmacy first-year stream			Feb	\$35,100
	Human Biology Preclinical	064457D	3 Years	Feb	\$36,300
	Laboratory Medicine	064464E	4 Years	Feb	\$36,300
	Molecular Genetics and Biotechnology	050345E	3 Years	Feb	\$36,000
	Nursing: • Australian Registration stream	041794K	1 Year	Feb, Jul	\$34,300
	Nursing: • Comprehensive stream		3.5 Years	Feb, Jul	\$36,100
	Nutrition and Food Science	003887J	3 Years	Feb, Jul*	\$36,500
	Occupational Therapy (Honours)	094933K	4 Years	Feb	\$37,800
	Oral Health Therapy	074565F	3 Years	Feb	\$38,400
	Physiotherapy	003890C	4 Years	Feb	\$38,200
Psychology and Human Resource Management	080702G	4 Years	Feb, Jul	\$35,200	
Speech Pathology	032949D	4 Years	Feb	\$37,200	
BACHELOR OF SCIENCE (HONOURS)	Biomedical Science	073667G	1 Year	Feb	\$35,900
	Public Health	093502G	1 Year	Feb, Jul	\$37,400
BACHELOR OF SOCIAL WORK	Social Work	068620K	4 Years	Feb	\$37,200

* This indicative first year fee is based on the lowest combination of units. Depending on the specific units you can choose to study within a course, this fee may increase. All fees are subject to annual increases of no more than five per cent. To calculate unit fees, visit curtin.edu/fee-calculator.

*Due to limited unit availabilities, July intake is only available to international students who have sufficient credit for recognised learning.

^Science subjects include tertiary level Biology, Chemistry, Earth and Environmental Science, Human Biology, Integrated Science, Physics or Psychology.

INDICATIVE CUT-OFF SCORES										COURSE PREREQUISITES
ATAR (incl. WACE/SACE/HSC/VCE)	WAUFP (CPS)	GCE A-Levels/STPM/ (best of 3 subjects)	HKDSE	IB	Ontario Gr 12	India (CBSE)	India (HSC)	Sri Lanka		
										Mathematics (including Calculus) and Chemistry.
										Mathematics (including Calculus).
										Specialist Mathematics.
										Specialist Mathematics.
										Mathematics (including Calculus) and Chemistry.
										Mathematics (including Calculus), Specialist Mathematics and Physics.
	95	75	14	25	37	90%	90%	94%	14	
										Mathematics (including Calculus) is required. Further Mathematics is desirable.
	92	72	13	24	34	84%	85%	88%	13	
	70	53	5	15	24	60%	60%	65%	5	Mathematics.
	70	53	5	15	24	60%	60%	65%	5	Mathematics and Chemistry.
										Mathematics and Chemistry.
	70	53	5	15	24	60%	60%	65%	5	Mathematics and Chemistry or Physics, or equivalent.
	80	59	8	18	28	70%	70%	71%	8	Mathematics (including Calculus).
	70	53	5	15	24	60%	60%	65%	5	Mathematics (including Calculus) and Physics.
	80	59	8	18	28	70%	70%	71%	8	Mathematics (including Calculus).
	90	70	12	23	33	80%	82.5%	85%	12	Physics and Mathematics (including Calculus) is required. Further Mathematics is desirable.
	70	53	5	15	24	60%	60%	65%	5	Mathematics.
	70	53	5	15	24	60%	60%	65%	5	Mathematics and Chemistry or Physics, or equivalent.
	70	53	5	15	24	60%	60%	65%	5	Mathematics.
	80	59	8	18	28	70%	70%	71%	8	Mathematics (including Calculus) and Physics.
	N/A	N/A	N/A	N/A	N/A	N/A	N/A	N/A	N/A	High achievement in an Actuarial Science degree.
	N/A	N/A	N/A	N/A	N/A	N/A	N/A	N/A	N/A	High achievement in an appropriate bachelor degree.
	70	53	5	15	24	60%	60%	65%	5	Mathematics is required. Calculus is desirable.
	80	59	8	18	28	70%	70%	71%	8	Chemistry and Mathematics are required. Biology and Human Biology are desirable.
	70	53	5	15	24	60%	60%	65%	5	Mathematics and one science subject^ are desirable.
	70	53	5	15	24	60%	60%	65%	5	One science subject^ is desirable.
	70	53	5	15	24	60%	60%	65%	5	One science subject^ is desirable.
	70	53	5	15	24	60%	60%	65%	5	Mathematics and one science subject^ are desirable.
	70	53	5	15	24	60%	60%	65%	5	Mathematics and one science subject^ are desirable.
	70	53	5	15	24	60%	60%	65%	5	Chemistry, Mathematics and Human Biology or Biology are desirable.
	73	54	6	16	25	63%	62.5%	66.5%	6	Chemistry, and/or Mathematics and/or Human Biology are desirable.
	70	53	5	15	24	60%	60%	65%	5	Human Biology, Biology and Mathematics are desirable..
	N/A	N/A	N/A	N/A	N/A	N/A	N/A	N/A	N/A	Qualifications recognised by the Australian Qualifications Framework as equivalent to a minimum of a three-year diploma, minimum of three months' full-time recent clinical nursing experience as a Registered Nurse in a hospital (acute setting). Provision of a résumé, job description, statement of employment and overseas nursing registration are required.
	70	53	5	15	24	60%	60%	65%	5	Human Biology and Integrated Science are desirable.
	70	53	5	15	24	60%	60%	65%	5	Chemistry is required. Mathematics is desirable.
	83	62	9.5	19.5	30	73%	74%	74.5%	9.5	One science subject^ is required.
	83	62	9.5	19.5	30	73%	74%	74.5%	9.5	Interview required. Human Biology or Biology is desirable.
	90	70	12	22	33	80%	82.5%	85%	12	One science subject^ is required.
	70	53	5	15	24	60%	60%	65%	5	Mathematics is desirable.
	80	59	8	18	28	70%	70%	71%	8	At least one science subject is desirable.
	N/A	N/A	N/A	N/A	N/A	N/A	N/A	N/A	N/A	An outstanding performance and an appropriate Bachelor of Science (or equivalent) course.
	N/A	N/A	N/A	N/A	N/A	N/A	N/A	N/A	N/A	High achievement in Bachelor of Science (or equivalent).
	70	53	5	15	24	60%	60%	65%	5	

UNDERGRADUATE: SINGLE DEGREES (continued)

For the latest course information, visit study.curtin.edu.au.

For important notes on course fees and admission criteria, see [page 47](#).

COURSE NAME	MAJOR	CRICOS CODE	DURATION	INTAKE	INDICATIVE FIRST YEAR FEE (AUD\$)*	
ARTS, CULTURE AND CREATIVE INDUSTRIES						
BACHELOR OF ARTS	Anthropology and Sociology	068750M	3 Years	Feb, Jul	\$29,200	
	Chinese					
	Creative Writing					
	Digital and Social Media					
	Geography					
	History					
	International Relations					
	Japanese					
	Journalism					
	Literary and Cultural Studies					
Professional Writing						
BACHELOR OF ARTS (HONOURS)	Honours	078137E	1 Year	Feb, Jul	\$29,600	
BACHELOR OF COMMUNICATIONS	Communications	018629D	3 Years	Feb, Jul	\$29,200	
BACHELOR OF CREATIVE ARTS	Fine Art	0100633	3 Years	Feb, Jul	\$29,200	
	Screen Arts					
	Theatre Arts					
BACHELOR OF DESIGN	Animation and Game Design	098137F	3 Years	Feb, Jul	\$29,500	
	Digital Experience and Interaction Design					
	Fashion Design					
	Graphic Design					
	Photography					
ARCHITECTURE AND BUILT ENVIRONMENT						
BACHELOR OF APPLIED SCIENCE	Architectural Science	003868A	3 Years	Feb, Jul*	\$33,100	
	Construction Management	010548C	4 Years	Feb, Jul*	\$30,700	
	Interior Architecture	023967K	4 Years	Feb, Jul*	\$32,700	
BACHELOR OF ARTS	Urban and Regional Planning	003903C	4 Years	Feb, Jul	\$30,200	
EDUCATION						
BACHELOR OF EDUCATION	Early Childhood Education	020852A	4 Years	Feb, Jul	\$31,000	
	Primary Education	020853M	4 Years	Feb, Jul	\$31,000	
	Secondary Education: (English)**	096505C	4 Years	Feb, Jul	\$30,500	
	Secondary Education: HASS (Economics)**				\$30,600	
	Secondary Education: HASS (Geography)**				\$30,700	
	Secondary Education: HASS (History)**				\$30,500	
	Secondary Education: HASS (Politics and Law)**				\$30,500	
	Secondary Education: (Mathematics)**				\$30,900	
	Secondary Education: Science (Biology)**				\$31,200	
	Secondary Education: Science (Chemistry)**				\$31,500	
	Secondary Education: Science (Human Biology)**					
	Secondary Education: Science (Physics)**					
	Secondary Education: Science (Psychology)**					
	Secondary Education: The Arts (Drama)**					
	Secondary Education: The Arts (Media Production and Analysis)**					
Secondary Education: The Arts (Visual Arts)**						
BACHELOR OF EDUCATIONAL STUDIES	Educational Studies					095951M

* The indicative first year fee is based on the lowest combination of units. Depending on the specific units you choose to study within a course, this fee may increase. All fees are subject to annual increases of no more than five per cent. To calculate unit fees, go to curtin.edu/fee-calculator.

* Due to limited unit availabilities, July intake is only available to students who have sufficient credit for recognised learning.

** The first-year indicative fee for the Bachelor of Education (Secondary Education) will increase depending on the options you choose to complement your education major e.g. a minor, additional major units, or a specialisation.

INDICATIVE CUT-OFF SCORES										COURSE PREREQUISITES
ATAR (incl. WACE/SACE/HSC/VCE)	WAUFP (CPS)	GCE A-Levels/STPM/ (best of 3 subjects)	HKDSE	IB	Ontario Gr 12	India (CBSE)	India (HSC)	Sri Lanka		
70	53	5	15	24	60%	60%	65%	5		
N/A	N/A	N/A	N/A	N/A	N/A	N/A	N/A	N/A	N/A	A course weighted average of at least 65 per cent in an appropriate humanities undergraduate degree.
70	53	5	15	24	60%	60%	65%	5		
70	53	5	15	24	60%	60%	65%	5		
70	53	5	15	24	60%	60%	65%	5		
70	53	5	15	24	60%	60%	65%	5		
70	53	5	15	24	60%	60%	65%	5	Mathematics.	
70	53	5	15	24	60%	60%	65%	5	Applicants seeking credit for recognised learning must submit a folio.	
70	53	5	15	24	60%	60%	65%	5		
70	53	5	15	24	60%	60%	65%	5	Mathematics is desirable.	
70	53	5	15	24	60%	60%	65%	5	Mathematics is desirable.	
70	53	5	15	24	60%	60%	65%	5	Mathematics (including Calculus).	
70	53	5	15	24	60%	60%	65%	5	Mathematics, plus at least one of the following subjects: Animal Production Systems, Aviation, Biology, Chemistry, Earth and Environmental Science, Human Biology, Integrated Science, Marine and Maritime Studies, Physics, Plant Production Systems, Psychology.	
70	53	5	15	24	60%	60%	65%	5	Chemistry and Mathematics.	
70	53	5	15	24	60%	60%	65%	5	Physics and Mathematics including (Calculus).	
70	53	5	15	24	60%	60%	65%	5	Mathematics is desirable.	

UNDERGRADUATE: DOUBLE DEGREES

For the latest course information, visit study.curtin.edu.au.

For important notes on course fees and admission criteria, see [page 47](#).

DEGREE 1	DEGREE 2	CRICOS CODE	DURATION	INTAKE	INDICATIVE FIRST YEAR FEE (AUD\$)*
BUSINESS, MANAGEMENT AND LAW					
Bachelor of Laws	Bachelor of Arts: • International Relations • Journalism	077965K	4.5 Years	Feb	\$29,200
Bachelor of Laws	Bachelor of Commerce: • Accounting • Economics • Finance • Human Resource Management • Marketing • Taxation	078482K	4.5 Years	Feb	\$29,200
Bachelor of Laws	Bachelor of Science (Psychology)	096308G	5.5 Years	Feb	\$34,700
ENGINEERING AND MINING					
Bachelor of Engineering: • Chemical • Civil and Construction • Mechanical • Metallurgical • Mining	Bachelor of Commerce: • Accounting • Economics • Finance • Management	066675M	5.5 Years	Feb, Jul	\$35,100
Bachelor of Engineering (Chemical Engineering) (Honours)	Bachelor of Science (Chemistry)	050336F	5 Years	Feb	\$35,100
Bachelor of Engineering (Chemical Engineering) (Honours)	Bachelor of Science (Extractive Metallurgy)	043753C	5 Years	Feb	\$35,100
Bachelor of Engineering (Civil and Construction Engineering) (Honours)	Bachelor of Science (Mining)	050568A	5 Years	Feb	\$35,100
Bachelor of Engineering (Electrical and Electronic Engineering) (Honours)	Bachelor of Science (Computer Science)	095950A	5 Years	Feb, Jul	\$35,100
Bachelor of Engineering (Electrical and Electronic Engineering) (Honours)	Bachelor of Science (Data Science)	095950A	5 Years	Feb, Jul	\$35,100
Bachelor of Engineering (Electrical and Electronic Engineering) (Honours)	Bachelor of Science (Physics)	095950A	5 Years	Feb, Jul	\$35,100
Bachelor of Engineering (Mechatronic Engineering) (Honours)	Bachelor of Science (Computer Science)	095950A	5 Years	Feb, Jul	\$35,100
PHYSICAL SCIENCES AND MATHEMATICS					
Bachelor of Science (Chemistry)	Bachelor of Arts: • Anthropology and Sociology • Chinese • Digital and Social Media • Geography • International Relations • Japanese • Professional Writing and Publishing	074653F	4 Years	Feb	\$31,100
Bachelor of Science: • Coastal and Marine Science • Environmental Biology	Bachelor of Arts: • Anthropology and Sociology • Chinese • Digital and Social Media • Geography • International Relations • Japanese • Professional Writing and Publishing	074653F	4 Years	Feb	\$31,100
Bachelor of Science (Data Science)	Bachelor of Arts: • Anthropology and Sociology • Chinese • Digital and Social Media • Geography • International Relations • Japanese • Professional Writing and Publishing	074653F	4 Years	Feb	\$30,800
Bachelor of Science (Mathematics)	Bachelor of Arts: • Anthropology and Sociology • Chinese • Digital and Social Media • Geography • International Relations • Japanese • Professional Writing and Publishing	074653F	4 Years	Feb	\$30,600
Bachelor of Science (Physics)	Bachelor of Arts: • Anthropology and Sociology • Chinese • Digital and Social Media • Geography • International Relations • Japanese • Professional Writing and Publishing	074653F	4 Years	Feb	\$31,000

The indicative first year fee is based on the lowest combination of units. Depending on the specific units you choose to study within a course, this fee may increase. All fees are subject to annual increases of no more than five per cent. To calculate unit fees, go to curtin.edu/fee-calculator.

^ Science subjects include tertiary level Biology, Chemistry, Earth and Environmental Science, Human Biology, Integrated Science, Physics or Psychology.

INDICATIVE CUT-OFF SCORES										COURSE PREREQUISITES
ATAR (incl. WACE/SACE/HSC/VCE)	WAUFP (CPS)	GCE A-Levels/STPM/ (best of 3 subjects)	HKDSE	IB	Ontario Gr 12	India (CBSE)	India (HSC)	Sri Lanka		
90	70	12	23	33	80%	82.5%	85%	12		
90	70	12	23	33	80%	82.5%	85%	12		
90	70	12	23	33	80%	82.5%	85%	12		
80	59	8	18	28	70%	70%	71%	8	Mathematics (including Calculus) and either Chemistry, Physics or Engineering Studies.	
80	59	8	18	28	70%	70%	71%	8	Mathematics (including Calculus), Chemistry and Physics.	
80	59	8	18	28	70%	70%	71%	8	Mathematics (including Calculus), Chemistry and Physics.	
80	59	8	18	28	70%	70%	71%	8	Mathematics (including Calculus) and either Chemistry, Physics or Engineering Studies.	
80	59	8	18	28	70%	70%	71%	8	Mathematics (including Calculus) and either Chemistry, Physics or Engineering Studies.	
80	59	8	18	28	70%	70%	71%	8	Mathematics (including Calculus) and Physics.	
80	59	8	18	28	70%	70%	71%	8	Mathematics (including Calculus), Physics and Chemistry.	
80	59	8	18	28	70%	70%	71%	8	Mathematics (including Calculus) and either Chemistry, Physics or Engineering Studies.	
75	56	7	17	26	65%	65%	68%	7	Chemistry and Mathematics (including Calculus).	
75	56	7	17	26	65%	65%	68%	7	Mathematics and one science subject^.	
80	59	8	18	28	70%	70%	71%	8	Mathematics (including Calculus).	
80	59	8	18	28	70%	70%	71%	8	Mathematics (including Calculus).	
80	59	8	18	28	70%	70%	71%	8	Physics and Mathematics (including Calculus).	

UNDERGRADUATE: DOUBLE DEGREES (continued)

For the latest course information, visit study.curtin.edu.au.

For important notes on course fees and admission criteria, see page 47.

DEGREE 1	DEGREE 2	CRICOS CODE	DURATION	INTAKE	INDICATIVE FIRST YEAR FEE (AUD\$)*
PHYSICAL SCIENCES AND MATHEMATICS (CONTINUED)					
Bachelor of Science (Applied Geology)	Bachelor of Commerce (Finance)	043262M	4 Years	Feb	\$32,300
Bachelor of Science (Applied Geology)	Bachelor of Science (Environmental Biology)	043265G	4 Years	Feb	\$35,100
Bachelor of Science (Applied Geology)	Bachelor of Science (Geophysics)	052798D	4 Years	Feb	\$34,800
Bachelor of Science (Chemistry)	Bachelor of Commerce: • Economics • Entrepreneurship • Finance	074654E	4 Years	Feb	\$31,100
Bachelor of Science: • Coastal and Marine Science • Environmental Biology	Bachelor of Commerce: • Economics • Entrepreneurship • Finance	074654E	4 Years	Feb	\$31,100
Bachelor of Science (Data Science)	Bachelor of Commerce: • Economics • Entrepreneurship • Finance	074654E	4 Years	Feb	\$30,800
Bachelor of Science (Mathematics)	Bachelor of Commerce: • Economics • Entrepreneurship • Finance	074654E	4 Years	Feb	\$30,600
Bachelor of Science (Physics)	Bachelor of Commerce: • Economics • Entrepreneurship • Finance	074654E	4 Years	Feb	\$31,000
HEALTH					
Bachelor of Science (Health Promotion)	Bachelor of Science (Health and Safety)	046654D	4 Years	Feb	\$36,600
Bachelor of Science (Nutrition and Food Science)	Bachelor of Science (Health Promotion)	046656B	4 Years	Feb	\$36,600
Bachelor of Science (Psychology)	Bachelor of Commerce (Human Resource Management and Industrial Relations)	099598B	5 Years	Feb	\$34,700
Bachelor of Science (Psychology)	Bachelor of Commerce (Marketing)	095948F	5 Years	Feb	\$32,800
ARTS, CULTURE AND CREATIVE INDUSTRIES					
Bachelor of Arts: • Anthropology and Sociology • Chinese • Creative Writing • Digital and Social Media • Geography • History • International Relations • Japanese • Journalism • Literary and Cultural Studies • Professional Writing and Publishing • Screen Arts • Theatre Arts	Bachelor of Commerce: • Accounting • Economics • Finance • International Business • Marketing • Public Relations • Tourism and Hospitality	072465D	4 Years	Feb, Jul	\$29,200

The indicative first year fee is based on the lowest combination of units. Depending on the specific units you choose to study within a course, this fee may increase. All fees are subject to annual increases of no more than five per cent. To calculate unit fees, go to curtin.edu/fee-calculator.

^ Science subjects include tertiary level Biology, Chemistry, Earth and Environmental Science, Human Biology, Integrated Science, Physics or Psychology.

INDICATIVE CUT-OFF SCORES										COURSE PREREQUISITES
ATAR (incl. WACE/SACE/HSC/VCE)	WAUFP (CPS)	GCE A-Levels/STPM/ (best of 3 subjects)	HKDSE	IB	Ontario Gr 12	India (CBSE)	India (HSC)	Sri Lanka		
70	53	5	15	24	60%	60%	65%	5	Mathematics.	
70	53	5	15	24	60%	60%	65%	5	Mathematics and one science subject^.	
75	56	7	17	26	65%	65%	68%	7	Mathematics (including Calculus) and Physics.	
75	56	7	17	26	65%	65%	68%	7	Chemistry and Mathematics (including Calculus).	
75	56	7	17	26	65%	65%	68%	7	Mathematics and one science subject^.	
80	59	8	18	28	70%	70%	71%	8	Mathematics (including Calculus).	
80	59	8	18	28	70%	70%	71%	8	Mathematics (including Calculus).	
80	59	8	18	28	70%	70%	71%	8	Physics and Mathematics (including Calculus).	
70	53	5	15	24	60%	60%	65%	5	One science subject^ is desirable.	
70	53	5	15	24	60%	60%	65%	5	Chemistry is required and Mathematics is desirable.	
70	53	5	15	24	60%	60%	65%	5	Mathematics and one science subject^ are desirable.	
80	59	8	18	28	70%	70%	71%	8	Mathematics and one science subject^ are desirable.	
70	53	5	15	24	60%	60%	65%	5	At least Mathematics is required. There may be a portfolio requirement for some major combinations.	

POSTGRADUATE ENTRY REQUIREMENTS



For admission into Curtin, you must provide evidence you have completed a degree from a recognised university and provide evidence of English language proficiency. In addition, you may need to meet specific course prerequisites.

Visit international.curtin.edu.au to search for specific prerequisites.

As all courses at Curtin are taught in English, you will need to meet Curtin's English language proficiency. You may be deemed proficient in English if you have completed a bachelor degree course that was taught in English. Your competency in English will be assessed on a case-by-case basis. Any of the following tests can also be accepted as satisfying Curtin's English language proficiency.

Curtin English

Completing a program at our Curtin English language centre will help you meet the English language proficiency you need to study at Curtin. If you receive an offer to study at Curtin but don't meet the English requirement, you may qualify for a free 10-week program.

curtin.edu/english

GENERAL ENGLISH LANGUAGE ENTRY REQUIREMENTS

ENGLISH LANGUAGE TEST	MINIMUM SCORE
IELTS (INTERNATIONAL ENGLISH LANGUAGE TESTING SYSTEM) ACADEMIC - Listening, Reading, Writing, and Speaking - Overall band score	6.0 6.5
TOEFL (TEST OF ENGLISH AS A FOREIGN LANGUAGE) iBT Reading Listening Speaking Writing	79 (overall) 13 13 18 21
Pearson Test of English – Academic (PTE-A) - Listening, Reading, Writing and Speaking - Overall score	50 58
C1 Advanced (Formerly known as Cambridge English: Advanced (CAE)) - Listening, Reading, Writing and Speaking - Overall score	169 176
English Language Bridging (ELB)	Grade B-



COURSES WITH OTHER ENGLISH LANGUAGE REQUIREMENTS

ENGLISH LANGUAGE TEST	IELTS (INTERNATIONAL ENGLISH LANGUAGE TESTING SYSTEM) ACADEMIC			TOEFL (TEST OF ENGLISH AS A FOREIGN LANGUAGE) iBT
COURSES	WRITING AND SPEAKING	READING AND LISTENING	OVERALL BAND SCORE	TOEFL iBT SCORE
All engineering courses	6.0	6.0	6.0	68 overall Reading: 13 Listening: 13 Speaking: 18 Writing: 21
All physiotherapy, pharmacy, occupational therapy, psychology, nursing, social work, speech pathology and dietetics courses	7.0	7.0	7.0	99 overall Reading: 24 Listening: 24 Speaking: 23 Writing: 27
Master of Molecular Medicine	6.5	6.5	7.0	94 overall Reading: 20 Listening: 20 Speaking: 20 Writing: 24
Master of Teaching	Writing: 7.0 Speaking: 8.0	Reading: 7.0 Listening: 8.0	7.5	105 overall Reading: 24 Listening: 28 Speaking: 26 Writing: 27

Applicants who complete a bachelor degree course in which English was the language of instruction will be considered on a case-by-case basis.

The information published in this guide is correct as at September 2019 but may be subject to change. Please check individual course entry requirements and prerequisites at international.curtin.edu.au.

POSTGRADUATE: SINGLE DEGREES

For the latest course information, visit study.curtin.edu.au.

For important notes on course fees and admission criteria, see [page 47](#).

COURSE NAME	CRICOS CODE	DURATION	INTAKE	INDICATIVE FIRST YEAR FEE (AUD\$)*	ADMISSION CRITERIA*
BUSINESS, MANAGEMENT AND LAW					
GRADUATE CERTIFICATE					
Applied Finance	084067G	6 Months	Feb, Jul	\$15,300	<ul style="list-style-type: none"> A bachelor degree or equivalent from a recognised tertiary institution in a discipline other than finance OR At least 3-5 years of significant, relevant work experience.
Business	074652G	6 Months	Jan, May, Aug	\$18,300	<ul style="list-style-type: none"> A bachelor degree from a recognised tertiary institution and three years' work experience OR Significant work experience at a recognisable level of responsibility.
Digital Marketing	0100482	6 Months	Feb, Jul	\$15,100	<ul style="list-style-type: none"> A bachelor degree (or equivalent) in any discipline from a recognised tertiary institution OR At least five years' relevant work experience.
Information Systems and Technology	049883M	6 Months	Feb, Jul	\$15,100	<ul style="list-style-type: none"> A bachelor degree from a recognised tertiary institution in any discipline other than information systems, information technology, computer science or software engineering OR At least five years' relevant professional work experience.
Luxury Branding	098157B	6 Months	Feb, Jul	\$15,100	<ul style="list-style-type: none"> A bachelor degree from a recognised tertiary institution in any discipline OR At least five years' relevant professional or managerial work experience.
Marketing	044636M	6 Months	Feb, Jul	\$15,100	<ul style="list-style-type: none"> A bachelor degree from a recognised tertiary institution in any discipline OR At least five years' relevant professional or managerial work experience.
Professional Accounting	051616A	6 Months	Feb, Jul	\$15,600	<ul style="list-style-type: none"> A qualification from a recognised institution, not majoring in accounting, that is recognised at a level equal to or greater than AQF Level 7 OR A recognised 4-year overseas qualification in accounting, as determined by the School of Accounting OR Proof of appropriate and relevant 3-5 years' work experience, as determined by the School of Accounting.
Supply Chain Management	041930G	6 Months	Feb, Jul	\$15,100	<ul style="list-style-type: none"> A bachelor degree or equivalent from a recognised tertiary institution in any discipline other than logistics, supply chain management or procurement OR At least five years' relevant professional or managerial work experience.
Taxation	020874F	6 Months	Feb, Jul	\$15,100	<ul style="list-style-type: none"> A bachelor degree or equivalent from a recognised tertiary institution in a related discipline OR Relevant work experience.
GRADUATE DIPLOMA					
Business	006112K	1 Year	Jan, May, Aug	\$33,400	<ul style="list-style-type: none"> A bachelor degree from a recognised tertiary institution and at least three years' relevant work experience OR A Graduate Certificate in Business from Curtin.
Human Resources	051619J	1 Year	Feb, Jul	\$30,200	<ul style="list-style-type: none"> A bachelor degree from a recognised tertiary institution in an unrelated discipline OR A Graduate Certificate in Human Resources from a recognised tertiary institution.
Luxury Branding	098156C	1 Year	Feb, Jul	\$30,100	<ul style="list-style-type: none"> A bachelor degree or equivalent in any discipline from a recognised tertiary institution OR A graduate certificate in a related field from a recognised tertiary institution.
Marketing	056849K	1 Year	Feb, Jul	\$30,200	<ul style="list-style-type: none"> A bachelor degree or equivalent in any discipline from a recognised tertiary institution OR A graduate certificate in any discipline.
Professional Accounting	051622C	1 Year	Feb, Jul	\$31,100	<ul style="list-style-type: none"> A qualification from a recognised institution, not majoring in accounting, that is recognised at a level equal to or greater than AQF Level 7 OR A recognised 4-year overseas qualification in Accounting, as determined by the School of Accounting OR Proof of appropriate and relevant 3-5 years' work experience, as determined by the School of Accounting OR A Graduate Certificate in Professional Accounting from Curtin.
Taxation	042202J	1 Year	Feb, Jul	\$30,200	<ul style="list-style-type: none"> A bachelor degree in a relevant discipline from a recognised Australian tertiary institution, or equivalent qualification.
MASTER					
Accounting: <ul style="list-style-type: none"> ACCA Global^h CPA Australia Extension Digital Technologies and Data Management 	049884K	1.5 Years	Feb, Jul	\$31,800	<ul style="list-style-type: none"> A bachelor degree or equivalent qualification from a recognised institution, majoring in accounting and recognised at AQF Level 7.
Business Administration: <ul style="list-style-type: none"> Business Administration Digital Marketing Innovation and Enterprise Leadership Oil and gas 	074577B	1.5 Years	Jan, May, Aug	\$38,000 \$37,200 \$38,800 \$39,600 \$39,600	<ul style="list-style-type: none"> A bachelor degree from a recognised tertiary institution or Graduate Certificate in Business AND At least three years of relevant work experience at managerial level. Entry to the course is competitive and you will be required to attend an interview in the final stages of application.

The indicative first year fee is based on the lowest combination of units. Depending on the specific units you choose to study within a course, this fee may increase. All fees are subject to annual increases of no more than five per cent. To calculate unit fees, go to curtin.edu/fee-calculator.

* This admission criteria is in addition to meeting Curtin's English language proficiency and any other course requirements. See page 32 for more information.

^The ACCA Global major is only available from Semester 2, 2021.

COURSE NAME	CRICOS CODE	DURATION	INTAKE	INDICATIVE FIRST YEAR FEE (AUD\$)*	ADMISSION CRITERIA*
Business Administration (Advanced)	093141F	2 Years	Jan, May, Aug	\$39,700	<ul style="list-style-type: none"> • An approved bachelor degree from a recognised tertiary institution or a Graduate Certificate in Business from Curtin AND • At least three years of subsequent, relevant work experience. Entry to the course is competitive and you will be required to attend an interview in the final stages of application.
Commerce (Advanced Accounting CPA Australia Extension)	078409G	2 Years	Feb, Jul	\$31,600	A qualification from a CPA accredited institution, majoring in accounting that is recognised at AQF Level 7.
Commerce (Information Systems and Technology)	078409G	2 Years	Feb, Jul	\$30,200	• A bachelor degree or an equivalent qualification in any discipline from a recognised tertiary institution.
Commerce (Marketing)	078409G	2 Years	Feb, Jul	\$30,200	<ul style="list-style-type: none"> • A bachelor degree from a recognised tertiary institution in any discipline OR • A graduate certificate in any discipline.
Commerce (Professional Accounting): • Accounting Foundation stream • CPA Australia Extension stream	078409G	2 Years	Feb, Jul	\$31,100	<ul style="list-style-type: none"> • An undergraduate degree from a recognised institution in any discipline other than accounting OR • A Graduate Certificate in Professional Accounting.
Commerce (Supply Chain Management)	078409G	2 Years	Feb, Jul	\$30,200	• A bachelor degree or any equivalent qualification in any discipline from a recognised tertiary institution.
Finance	051627J	1.5 Years	Feb, Jul	\$30,200	<ul style="list-style-type: none"> • A bachelor degree from a recognised tertiary institution in the field of business OR • A bachelor degree from a recognised tertiary institution in any field with relevant work experience OR • A graduate certificate or graduate diploma in the field of business.
Human Resources	027236B	1.5 Years	Feb, Jul	\$30,200	<ul style="list-style-type: none"> • A bachelor degree from a recognised tertiary institution in a related discipline OR • A bachelor degree from a recognised tertiary institution in any discipline and relevant substantial work experience OR • A graduate certificate in a related field.
Information Systems and Technology	049881B	1.5 Years	Feb, Jul	\$30,200	<ul style="list-style-type: none"> • A bachelor degree or equivalent from a recognised tertiary institution in a related discipline OR • A bachelor degree or equivalent from a recognised tertiary institution in any discipline and a minimum of five years' relevant substantial work experience OR • A Graduate Certificate in Information Systems and Technology from Curtin.
International Business: • Business of Mining stream • Human Rights stream • International Relations stream • National Security stream • Predictive Data Analytics stream	058470B	1.5 Years	Feb, Jul	\$30,200	<ul style="list-style-type: none"> • A bachelor degree from a recognised tertiary institution OR • A graduate certificate in a related field from a recognised tertiary institution.
International Business and Entrepreneurship	094637G	2 Years	Feb, Jul	\$30,000	• A bachelor degree from a recognised tertiary institution in any discipline.
Luxury Branding	098155D	1.5 Years	Feb, Jul	\$30,100	<ul style="list-style-type: none"> • A bachelor degree from a recognised tertiary institution in any discipline OR • A graduate certificate in a related field from a recognised tertiary institution.
Management	079264A	2 Years	Feb, Jul	\$30,400	<ul style="list-style-type: none"> • A bachelor degree or equivalent qualification from a recognised tertiary institution in any discipline AND • Submission of a current curriculum vitae AND • An interview. Entry to the course is competitive with limited places being offered.
Marketing	027233E	1.5 Years	Feb, Jul	\$30,200	<ul style="list-style-type: none"> • A bachelor degree from a recognised tertiary institution in a related discipline OR • A bachelor degree in any discipline and at least five years' relevant professional or managerial work experience OR • A graduate certificate in a related discipline from a recognised institution.
Supply Chain Management	072808G	1.5 Years	Feb, Jul	\$30,200	<ul style="list-style-type: none"> • A bachelor degree or equivalent qualification from a recognised tertiary institution in a related discipline OR • A bachelor degree or equivalent qualification from a recognised tertiary institution in any discipline and a minimum of five years' relevant work experience OR • A graduate certificate from a recognised tertiary institution in a related field.
Taxation	027239K	1.5 Years	Feb, Jul	\$30,200	<ul style="list-style-type: none"> • A bachelor degree from a recognised tertiary institution in taxation OR • A bachelor degree from a recognised tertiary institution in business, commerce or a related field and 3-5 years' relevant work experience OR • An equivalent qualification from a recognised tertiary institution OR • A Graduate Diploma in Taxation with a course-weighted average of 65 per cent AND • A minimum of two years' relevant employment experience.

POSTGRADUATE: SINGLE DEGREES (continued)

For the latest course information, visit study.curtin.edu.au.

For important notes on course fees and admission criteria, see [page 47](#).

COURSE NAME	CRICOS CODE	DURATION	INTAKE	INDICATIVE FIRST YEAR FEE (AUD\$)*	ADMISSION CRITERIA*
AGRICULTURE, ENVIRONMENT AND SUSTAINABILITY					
MASTER					
Science: • Dryland Agricultural Systems • Sustainability Management • Water Quality and Supply Systems	061489J	2 Years	Feb, Jul	\$33,400 \$37,400 \$32,500	<ul style="list-style-type: none"> • A recognised bachelor degree in science and competency in agricultural systems or related discipline to the level of second-year tertiary study OR • A recognised bachelor degree with honours in a related field OR • A graduate diploma in a related field.
ENGINEERING AND MINING					
GRADUATE CERTIFICATE					
Mineral and Energy Economics	018030B	6 Months	Feb, Jul	\$17,200	<ul style="list-style-type: none"> • An approved bachelor degree. • At least three years of relevant managerial experience.
GRADUATE DIPLOMA					
Metallurgy	054623M	1 Year	Feb, Jul	\$38,000	<ul style="list-style-type: none"> • A recognised bachelor degree in an engineering or science discipline, excluding extractive metallurgy or equivalent qualifications.
Mining	003967J	1 Year	Feb	\$38,000	<ul style="list-style-type: none"> • A recognised bachelor degree in applied geology or civil, geological or geotechnical engineering OR • A recognised bachelor degree in surveying, or mechanical or metallurgical engineering plus relevant work experience.
Professional Engineering: • Chemical Engineering stream • Civil Engineering stream • Electrical and Electronic Engineering stream • Mechanical Engineering stream • Petroleum Engineering stream • Software Engineering stream	098139D	1 Year	Feb	\$36,200	<ul style="list-style-type: none"> • A bachelor degree or equivalent in a related science discipline OR • An undergraduate engineering qualification.
MASTER					
Engineering Management	058865E	1 Year	Jan, May, Aug	\$36,300	<ul style="list-style-type: none"> • A recognised degree in engineering or an equivalent qualification in a recognised discipline of engineering with a high aggregate, preferably with at least one year of relevant work experience since graduation.
Engineering Science (Metallurgy)	078760D	2 Years	Feb, Jul	\$38,000	<ul style="list-style-type: none"> • A recognised bachelor degree in extractive metallurgy or a closely related discipline, with a course-weighted average of 65 per cent or above in the final year, or equivalent, plus at least two years of relevant work experience OR • A Graduate Diploma in Metallurgy OR • Other qualifications and experience at an equivalent level to the previous two pathways. Applicants will only be admitted with the consent of the appropriate senior academic. Candidates who apply via the graduate diploma pathway may be eligible for credit for recognised learning.
Engineering Science (Mining)	078759G	2 Years	Feb, Jul	\$38,000	<ul style="list-style-type: none"> • A recognised bachelor degree in mining engineering or a closely related discipline, with a course-weighted average of at least 65 per cent or equivalent OR • A Graduate Diploma in Mining or a related discipline OR • Other qualifications and experience at an equivalent level to the previous two pathways.
Professional Engineering: • Chemical Engineering • Civil Engineering • Embedded Systems Engineering • Emerging Power Systems • Telecommunication and Networking Engineering • Mechanical Engineering • Petroleum Engineering • Software Engineering • Subsea Engineering	0100657	2 Years	Feb, Jul	\$36,900	<ul style="list-style-type: none"> • A four-year undergraduate engineering qualification in a discipline related to your chosen major. Applicants who do not fulfil this requirement should apply for the Graduate Diploma in Engineering.
Science (Global Subsea Engineering)	094354G	14 Months	Jul	\$38,000	<ul style="list-style-type: none"> • A recognised bachelor degree in engineering with first- or upper second class honours.
Science (Industrial Engineering)	061489J	2 Years	Feb, Jul	\$32,200	<ul style="list-style-type: none"> • A recognised bachelor degree in science or engineering and evidence of competency in mathematics or a related discipline to the level of second year tertiary study.
Science (Mineral and Energy Economics): • Energy Economics (non-technical background) • Energy Economics (technical background) • Mineral Economics (non-technical background) • Mineral Economics (technical background)	072466C	1.5 Years	Feb, Jul	\$36,600 \$37,200 \$36,800 \$37,200	<ul style="list-style-type: none"> • An approved bachelor degree AND. • At least three years of relevant managerial experience. Graduates from either the Curtin Graduate Certificate in Business or the Curtin Graduate Certificate in Mineral and Energy Economics will qualify for entry.
IT AND COMPUTING					
GRADUATE DIPLOMA					
Cyber Security	077327G	1 Year	Feb, Jul	\$32,000	<ul style="list-style-type: none"> • A recognised bachelor degree in computer science, information technology or software engineering.
MASTER					
Science (Computer Science)	061489J	2 Years	Feb, Jul	\$32,700	<ul style="list-style-type: none"> • A recognised bachelor degree in science, with competency in computer science or a related discipline to the level of second year tertiary study.

The indicative first year fee is based on the lowest combination of units. Depending on the specific units you choose to study within a course, this fee may increase. All fees are subject to annual increases of no more than five per cent. To calculate unit fees, go to curtin.edu/fee-calculator.

* This admission criteria is in addition to meeting Curtin's English language proficiency and any other course requirements. See page 32 for more information.

COURSE NAME	CRICOS CODE	DURATION	INTAKE	INDICATIVE FIRST YEAR FEE (AUD\$)*	ADMISSION CRITERIA*
PHYSICAL SCIENCES AND MATHEMATICS					
GRADUATE CERTIFICATE					
Food Science and Technology	014167F	6 Months	Feb, Jul	\$18,700	<ul style="list-style-type: none"> A bachelor degree or equivalent in science, engineering, nutrition, environmental health, home economics, agriculture or other appropriate disciplines. Applicants with other qualifications and experience are considered but may be required to complete additional bridging units.
Geospatial Intelligence	0100582	6 Months	Feb, Jul	\$19,000	<ul style="list-style-type: none"> A recognised bachelor degree in any discipline. A background in mathematics or statistics equivalent to first-year university level is recommended.
Predictive Analytics	092979A	6 Months	Feb	\$15,600	<ul style="list-style-type: none"> A recognised bachelor degree.
GRADUATE DIPLOMA					
Food Science and Technology	007289K	1 Year	Feb, Jul	\$37,400	<ul style="list-style-type: none"> A bachelor degree or equivalent in science, engineering, nutrition, environmental health, home economics, agriculture or other appropriate disciplines. Applicants with other qualifications and experience are considered but may be required to complete additional bridging units.
Geospatial Intelligence	0100578	1 Year	Feb, Jul	\$38,000	<ul style="list-style-type: none"> A recognised bachelor degree in any discipline. A background in mathematics or statistics equivalent to first-year university level is recommended.
Predictive Analytics	092978B	1 Year	Feb	\$31,000	<ul style="list-style-type: none"> A recognised bachelor degree.
MASTER					
Actuarial and Financial Science	054627G	1.5 Years	Feb, Jul	\$35,300	<ul style="list-style-type: none"> A recognised four-year bachelor or honours degree in mathematics, statistics, science, engineering or finance. Your basic mathematics and statistics competency must be equivalent to Curtin's second year calculus, linear algebra and statistical methods units.
Geospatial Intelligence	0100574	2 Years	Feb, Jul	\$38,000	<ul style="list-style-type: none"> A recognised bachelor degree in any discipline. A background in mathematics or statistics equivalent to first-year university level is recommended.
Predictive Analytics: <ul style="list-style-type: none"> Finance and Investment Analytics stream Resource Operations Engineering stream 	092977C	2 Years	Feb	\$31,000	<ul style="list-style-type: none"> A recognised bachelor degree.
Science (Food Science and Technology)	064466C	2 Years	Feb, Jul	\$37,400	<ul style="list-style-type: none"> A bachelor degree or equivalent in science, engineering, nutrition, environmental health, home economics, agriculture or other appropriate disciplines. Applicants with other qualifications and experience are considered but may be required to complete additional bridging units.
Science (Geology): <ul style="list-style-type: none"> Basin Analysis and Petroleum Geology stream Mineral Exploration and Mining Geology stream 	084800F	1.5 Years	Feb, Jul	\$38,000	<ul style="list-style-type: none"> A recognised bachelor degree in geology or a closely-related discipline.
Science (Geophysics)	061489J	2 Years	Feb	\$37,400	<ul style="list-style-type: none"> A recognised bachelor degree in science with competency in geophysics or a related discipline to the level of second-year tertiary study. Special consideration will be given to geoscience graduates with associate degrees or diplomas and several years of industry experience.
Science (Mathematical Sciences)	061489J	2 Years	Feb, Jul	\$32,200	<ul style="list-style-type: none"> A recognised bachelor degree in science, with competency in mathematical science or a related discipline to the level of second-year tertiary study.
HEALTH					
GRADUATE CERTIFICATE					
Clinical Physiotherapy: <ul style="list-style-type: none"> Continence and Women's Health stream Manipulative Therapy stream 	049886G	6 Months	Feb	\$19,000	<ul style="list-style-type: none"> A bachelor degree or higher qualification in physiotherapy or equivalent AND At least two years of relevant clinical experience AND Applicants must be eligible for temporary registration as a physiotherapist with the Australian Health Practitioners Registration Authority.
Public Health	079914E	6 Months	Feb, Jul	\$18,700	<ul style="list-style-type: none"> A bachelor degree preferably in health, education, behavioural sciences, social sciences or management.
GRADUATE DIPLOMA					
Health Administration	007874D	1 Year	Feb, Jul	\$36,500	<ul style="list-style-type: none"> A bachelor degree or equivalent in an appropriate discipline AND Work experience in health administration. If you do not have the required qualifications or work experience, you may need to undertake additional bridging units.
Health Promotion	010560G	1 Year	Feb, Jul	\$35,400	<ul style="list-style-type: none"> A bachelor degree preferably in health, education, behavioural sciences, social sciences or management.
Public Health	080069E	1 Year	Feb, Jul	\$37,400	<ul style="list-style-type: none"> A bachelor degree preferably in health, education, behavioural sciences, social sciences or management.
Sexology	068615G	1 Year	Feb	\$37,400	<ul style="list-style-type: none"> A bachelor degree with a minimum course weighted average of 70 in a relevant health area such as medical studies, education and theology, health promotion, health sciences, psychology, social work, sociology and anthropology or biological sciences.

POSTGRADUATE: SINGLE DEGREES (continued)

For the latest course information, visit study.curtin.edu.au.

For important notes on course fees and admission criteria, see [page 47](#).

COURSE NAME	CRICOS CODE	DURATION	INTAKE	INDICATIVE FIRST YEAR FEE (AUD\$)*	ADMISSION CRITERIA*
HEALTH (continued)					
MASTER					
Clinical Exercise Physiology	097865D	1.5 Years	Feb	\$38,000	<ul style="list-style-type: none"> A bachelor degree in Exercise and Sports Science or equivalent, with a course weighted average of at least 60 per cent. The bachelor degree must meet the accreditation requirements specified by Exercise and Sport Science Australia (ESSA). If you have completed a non-ESSA accredited undergraduate degree in exercise science or similar field, you must attain a Graduate Entry Assessment through ESSA prior to course admission.
Clinical Physiotherapy: <ul style="list-style-type: none"> Continenence and Women's Health Musculoskeletal Physiotherapy Sports Physiotherapy 	049888F	1 Year	Feb	\$37,400 \$38,000 \$38,000	<ul style="list-style-type: none"> A bachelor degree or higher qualification in physiotherapy or equivalent, plus at least three years of relevant clinical experience AND Registration as a physiotherapist with the Physiotherapy Board of Australia, or eligibility for limited registration for postgraduate training in Australia AND Evidence of completion of an approved first aid qualification.
Dietetics	079872K	2 Years	Feb	\$37,400	<ul style="list-style-type: none"> An undergraduate degree that meets the Dietitians Association of Australia requirements for entry to a graduate entry master. These requirements specify that 50 per cent of each of the first and second years of undergraduate study must comprise bioscience, chemistry, physiology and biochemistry AND. Completed equivalent of 100 credit points of undergraduate study in nutrition at second and third year levels. Entry to this course is competitive and a high course weighted average is required.
Health Administration	006110A	2 Years	Feb, Jul	\$35,600	<ul style="list-style-type: none"> A bachelor degree or equivalent in an appropriate discipline AND Work experience in health administration. If you do not have the the required qualifications or work experience, you may need to undertake additional bridging units.
Molecular Medicine	098136G	2 Years	Feb	\$36,200	<ul style="list-style-type: none"> A bachelor degree in a biomedical/life science-based discipline or equivalent, with a minimum course-weighted average of 65 per cent.
Nursing Practice	064467B	2 Years	Jul	\$33,400	<ul style="list-style-type: none"> A bachelor degree or equivalent with a minimum course weighted average of 70 per cent AND Completion of a human biology unit and a research unit at tertiary level.
Occupational Therapy	077383K	2.5 Years	Jan	\$43,200	<ul style="list-style-type: none"> A bachelor degree or equivalent, preferably in a health-related discipline with a course weighted average of 65 per cent AND Evidence of studies in the human biosciences (e.g. human biology) and psychology or behavioural science at university level.
Pharmacy	068621J	2 Years	Jan	\$34,900	<ul style="list-style-type: none"> A recognised bachelor degree with a history of above-average grades and evidence of the following five prerequisites: <ul style="list-style-type: none"> mathematics (advanced mathematics at senior secondary school level is also acceptable) or physics statistics or research methods with evidence of a statistics component or epidemiology chemistry biochemistry physiology or pathophysiology or a related discipline.
Psychology (Professional)	084066J	1 Year	Feb	\$36,000	<ul style="list-style-type: none"> A four-year Bachelor of Psychology or equivalent completed within the last 10 years, approved by the Australian Psychology Accreditation Council. Entry to this course is competitive and shortlisted candidates will be interviewed.
Public Health	064462G	2 Years	Feb, Jul	\$37,400	<ul style="list-style-type: none"> A bachelor degree preferably in health, education, behavioural sciences, social sciences or management.
Science (Health Practice)	096303B	2 Years	Feb	\$33,400	<ul style="list-style-type: none"> A recognised bachelor degree in a relevant health field with a minimum course weighted average of 70 per cent AND Current health professional registration/accreditation AND One-year minimum postgraduate experience in a clinical area of practice.
Sexology	074567D	2 Years	Feb	\$37,400	<ul style="list-style-type: none"> A bachelor degree with a minimum course weighted average of 70 in a relevant health area such as medical studies, education and theology, health promotion, health sciences, psychology, social work, sociology and anthropology or biological sciences.
Speech Pathology	033868G	2 Years	Jan	\$36,300	<ul style="list-style-type: none"> A bachelor or honours degree with a minimum course weighted average of 65 per cent AND. Evidence of studies in human biology at university level. If you do not have this background, you will need to complete additional bridging units.
Social Work (Qualifying)*	0100481	2 Years	Jul	\$36,000	<ul style="list-style-type: none"> A bachelor degree in a related field, including at least one-year full-time study in social or behavioural sciences OR Evidence of equivalent prior learning and appropriate professional experience.

The indicative first year fee is based on the lowest combination of units. Depending on the specific units you choose to study within a course, this fee may increase. All fees are subject to annual increases of no more than five per cent. To calculate unit fees, go to curtin.edu/fee-calculator.

* This admission criteria is in addition to meeting Curtin's English language proficiency and any other course requirements. See page 32 for more information.

^ The Master of Social Work (Qualifying) is only available from 29 July 2021.

**Due to limited unit availabilities, July intake is only available to students who have sufficient credit for recognised learning.

COURSE NAME	CRICOS CODE	DURATION	INTAKE	INDICATIVE FIRST YEAR FEE (AUD\$)*	ADMISSION CRITERIA*
Science (Health Practice): • Clinical Leadership	096303B	2 Years	Feb	\$33,400	<ul style="list-style-type: none"> • A recognised bachelor degree in a relevant field with a minimum course weighted average of 70 per cent AND • Current health professional registration/accreditation AND • One-year minimum postgraduate experience in a clinical area of practice.
Doctor of Physiotherapy (extended masters)	0100217	3 Years	Jan	\$38,000	<ul style="list-style-type: none"> • A bachelor degree or equivalent with a minimum course weighted average of 70 per cent AND • Successful completion of three of the following subjects at Bachelor of Science level or equivalent (Australian Qualification Framework Level 7 or higher): human musculoskeletal anatomy; human biology/physiology; health research methods or evidence-based practice.
ARTS, CULTURE AND CREATIVE INDUSTRIES					
GRADUATE CERTIFICATE					
Arts: • Creative Writing stream • Fine Art stream • Journalism stream • Professional Writing and Publishing stream • Screen Arts stream • Social and Cultural Inquiry stream	098147D	6 Months	Feb, Jul	\$14,600	• A bachelor degree or equivalent from a recognised institution.
Design and Art	037343E	6 Months	Feb	\$14,600	<ul style="list-style-type: none"> • A bachelor degree or equivalent in any field from a recognised institution OR • Five years' relevant vocational experience. Applications via this pathway are considered on an individual basis.
Digital and Social Media	030948K	6 Months	Feb, Jul	\$14,600	<ul style="list-style-type: none"> • A bachelor degree or equivalent from a recognised institution OR • Relevant, extensive work experience. Applications via this pathway are considered on an individual basis.
Human Rights	050729M	6 Months	Feb, Jul	\$14,600	<ul style="list-style-type: none"> • A bachelor degree or equivalent from a recognised institution AND • Relevant work experience. Applicants via this pathway are considered on an individual basis.
International Relations and National Security	074661F	6 Months	Feb, Jul	\$14,600	<ul style="list-style-type: none"> • A bachelor degree or equivalent in any field from a recognised institution OR • Five years' relevant work experience. Applications via this pathway are considered on an individual basis.
Journalism	0100581	6 Months	Feb	\$14,600	<ul style="list-style-type: none"> • A bachelor degree or equivalent in an unrelated field from a recognised institution OR • Recent, relevant and extensive work experience. Applicants via this pathway are considered on an individual basis.
GRADUATE DIPLOMA					
Digital and Social Media	030949J	1 Year	Feb, Jul	\$29,200	<ul style="list-style-type: none"> • A bachelor degree or equivalent in an unrelated field from a recognised institution OR • Successful completion of units in the Graduate Certificate in Digital and Social Media or Internet Communications.
International Relations and National Security	074660G	1 Year	Feb, Jul	\$29,200	• A bachelor degree or equivalent in any field from a recognised institution.
Journalism	0100576	1 Year	Feb	\$29,200	<ul style="list-style-type: none"> • A bachelor degree or equivalent in an unrelated field from a recognised institution OR • A graduate certificate in journalism. Applicants via this pathway are considered on an individual basis.
MASTER					
Applied Design and Art	084803C	2 Years	Feb, Jul**	\$29,200	<ul style="list-style-type: none"> • A bachelor degree or equivalent in any field from a recognised institution OR • A bachelor degree or equivalent in the same field as your intended postgraduate course (successful applicants will gain credit for one semester of study and begin their study in second semester) OR • A graduate certificate or diploma in any field from a recognised institution OR • A graduate certificate or diploma in design or art from a recognised institution (applicants may be eligible for credit for recognised learning) OR • Substantial industry/work experience in the field of art and/or design may be considered for applicants without a bachelor degree.
Arts: • Creative Writing • Fine Art • Professional Writing and Publishing • Screen Arts • Social and Cultural Inquiry	098146E	2 Years	Feb, Jul	\$29,200	<ul style="list-style-type: none"> • A bachelor degree or equivalent from a recognised institution, and you may require relevant work experience OR • A bachelor degree in any field with honours OR • A graduate certificate or diploma from a recognised institution.
Digital and Social Media	032988G	1.5 Years	Feb, Jul	\$29,200	<ul style="list-style-type: none"> • A bachelor degree or equivalent in an unrelated field from a recognised institution OR • Successful completion of units in the Graduate Certificate in Digital and Social Media or Internet Communications. Applicants in this pathway may be eligible for credit for recognised learning.

POSTGRADUATE: SINGLE DEGREES (continued)

For the latest course information, visit study.curtin.edu.au.

For important notes on course fees and admission criteria, see [page 47](#).

COURSE NAME	CRICOS CODE	DURATION	INTAKE	INDICATIVE FIRST YEAR FEE (AUD\$)*	ADMISSION CRITERIA*
ARTS, CULTURE AND CREATIVE INDUSTRIES (continued)					
MASTER					
Human Rights	061485B	1.5 Years	Feb, Jul	\$29,200	<ul style="list-style-type: none"> A bachelor degree or equivalent from a recognised institution in arts/humanities, psychology, education, social work, law, journalism or health OR A bachelor degree or equivalent in any field from a recognised institution, plus one year of relevant vocational experience OR A Graduate Certificate in Human Rights. Applicants in this pathway may be eligible for credit for recognised learning.
International Relations and National Security	074662E	1.5 Years	Feb, Jul	\$29,200	<ul style="list-style-type: none"> A three-year bachelor degree or equivalent in any field from a recognised institution, PLUS one of the following: <ul style="list-style-type: none"> one year of relevant work experience honours a graduate certificate or diploma in any field, OR A four-year bachelor degree or equivalent in any field from a recognised institution, OR A Graduate Certificate or Graduate Diploma in International Relations and National Security.
Journalism	0100573	2 Years	Feb	\$29,200	<ul style="list-style-type: none"> A bachelor degree or equivalent in an unrelated field from a recognised institution.
ARCHITECTURE AND BUILT ENVIRONMENT					
GRADUATE CERTIFICATE					
Development Planning	023976J	0.5 Years	Feb, Jul	\$15,000	<ul style="list-style-type: none"> A bachelor degree or equivalent from a recognised institution OR Relevant, extensive work experience. Applications via this pathway are considered on an individual basis.
Project Management	029361C	0.5 Years	Feb, Jul	\$15,500	<ul style="list-style-type: none"> A bachelor degree or equivalent from a recognised institution OR Five years' of management experience. Applications via this pathway are considered on an individual basis.
GRADUATE DIPLOMA					
Project Management	027213J	1 Year	Feb, Jul	\$31,000	<ul style="list-style-type: none"> A bachelor degree or equivalent from a recognised institution OR A Graduate Certificate in Project Management. Applicants in this pathway may be eligible for credit for recognised learning.
MASTER					
Architecture	058728C	2 Years	Feb, Jul	\$32,900	<ul style="list-style-type: none"> A bachelor degree in architecture from a recognised institution or equivalent. Entry to the course is competitive and academic achievement in the final two semesters of study, or equivalent, is considered. A folio submission may also be required.
Project Management	098520K	2 Years	Feb, Jul	\$31,000	<ul style="list-style-type: none"> A bachelor degree or equivalent from a recognised tertiary institution OR A Graduate Certificate or Graduate Diploma in Project Management.
Science (Project Management): • Professional stream • Research stream	027245A	1.5 Years	Feb, Jul	\$31,000	<ul style="list-style-type: none"> A bachelor degree or equivalent from a recognised tertiary institution OR A Graduate Certificate or Diploma in Project Management.
Urban and Regional Planning	050344F	1.5 Years	Feb, Jul	\$30,000	<ul style="list-style-type: none"> A bachelor degree or equivalent from a recognised institution, which includes substantial planning-related content, OR A Graduate Certificate in Development Planning. Applicants in this pathway who have relevant work experience may be eligible for credit for recognised learning.
EDUCATION					
MASTER					
Arts (Applied Linguistics)	023985G	1 Year	Feb, Jul	\$31,000	<ul style="list-style-type: none"> A four-year education/teaching degree (normally Bachelor of Education or combined Bachelor of Science/Bachelor of Education) from a recognised institution OR A three-year bachelor degree or equivalent, plus either a Graduate Diploma in Education, Master of Teaching or equivalent OR A three-year bachelor degree or equivalent, plus either a Graduate Certificate in TESOL or a CELTA (Certificate of English Language Teaching to Adults) or equivalent OR A three-year bachelor degree or equivalent, plus two or more years' full-time documented language-teaching experience in the past 10 years OR An honours or masters degree.
Education	004005G	1 Year	Feb, Jul	\$31,000	<ul style="list-style-type: none"> A four-year degree in education or a combined/double education degree from a recognised institution OR A three-year degree in any discipline from a recognised institution, plus a minimum one-year teaching qualification (Graduate Diploma in Teaching or Master of Teaching or equivalent).
Teaching: • Early Childhood Education • Primary Education • Secondary Education	098318A	2 Years	Jan, Jun	\$31,000	<ul style="list-style-type: none"> A bachelor degree or equivalent from a recognised institution, with at least one year of study in an area related to either the early childhood, the primary or the secondary curriculum Have a current Working with Children Check and have had a recent criminal record screening at the time of enrolment.

* This indicative first year fee is based on the lowest combination of units. Depending on the specific units you can choose to study within a course, this fee may increase. All fees are subject to annual increases of no more than five per cent. To calculate unit fees, visit curtin.edu/fee-calculator.

*This admission criteria is in addition to meeting Curtin's English language proficiency and any other course requirements. See page 32 for more information.

POSTGRADUATE: DOUBLE DEGREES

For the latest course information, visit study.curtin.edu.au.

For important notes on course fees and admission criteria, see [page 47](#).

DEGREE 1	DEGREE 2	CRICOS CODE	DURATION	INTAKE	INDICATIVE FIRST YEAR FEE (AUD\$)*	ADMISSION CRITERIA*
SCIENCE AND ENGINEERING						
Master of Science (Mineral and Energy Economics) (Energy Economics) <ul style="list-style-type: none"> • Non-Technical background stream • Technical background stream 	Master of Business Administration	050596G	2.5 Years	Feb, Jul	\$37, 700 \$37, 500	<ul style="list-style-type: none"> • An approved bachelor degree. • At least three years of relevant managerial experience. Graduates from either the Curtin Graduate Certificate in Business or the Curtin Graduate Certificate in Mineral and Energy Economics will qualify for entry.
Master of Science (Mineral and Energy Economics) (Mineral Economics) <ul style="list-style-type: none"> • Non-Technical background stream • Technical background stream 	Master of Business Administration	050596G	2.5 Years	Feb, Jul	\$37, 100 \$37, 500	<ul style="list-style-type: none"> • An approved bachelor degree. • At least three years of relevant managerial experience. Graduates from either the Curtin Graduate Certificate in Business or the Curtin Graduate Certificate in Mineral and Energy Economics will qualify for entry.

The indicative first year fee is based on the lowest combination of units. Depending on the specific units you choose to study within a course, this fee may increase. All fees are subject to annual increases of no more than five per cent. To calculate unit fees, go to curtin.edu/fee-calculator.

* This admission criteria is in addition to meeting Curtin's English language proficiency and any other course requirements. See page 32 for more information.

RESEARCH DEGREE ENTRY REQUIREMENTS

RESEARCH DEGREE ENTRY

These are the general entry requirements for admission into a higher degree by research at Curtin.

You must:

- have a minimum of four years' previous study in a tertiary institution
- meet the eligibility criteria of the Graduate Studies Committee for the proposed study enrolling area(s)
- have confirmation from the head of your enrolling area that the necessary supervision and facilities can be adequately provided to support your research
- meet Curtin's English language requirements for higher degrees by research.

ENGLISH LANGUAGE ADMISSION CRITERIA

You may meet Curtin's English language proficiency if you have completed a tertiary qualification in which English was the language of instruction. This will be assessed on a case-by-case basis.

The table below outlines the minimum English language requirements for a postgraduate research degree, however many courses require a higher level of English competence.

ENGLISH LANGUAGE TEST	MINIMUM SCORE
IELTS (INTERNATIONAL ENGLISH LANGUAGE TESTING SYSTEM) ACADEMIC	
Listening, Reading, Writing, and Speaking	6.0
Overall band score	6.5
TOEFL (TEST OF ENGLISH AS A FOREIGN LANGUAGE) iBT	79 (overall)
Reading	13
Listening	13
Speaking	18
Writing	21
Pearson Test of English – Academic (PTE-A)	58
C1 Advanced (Formerly known as Cambridge English: Advanced (CAE))	176/169 each subskill
English Language Bridging (ELB)	Grade B-

FIND A RESEARCH SUPERVISOR

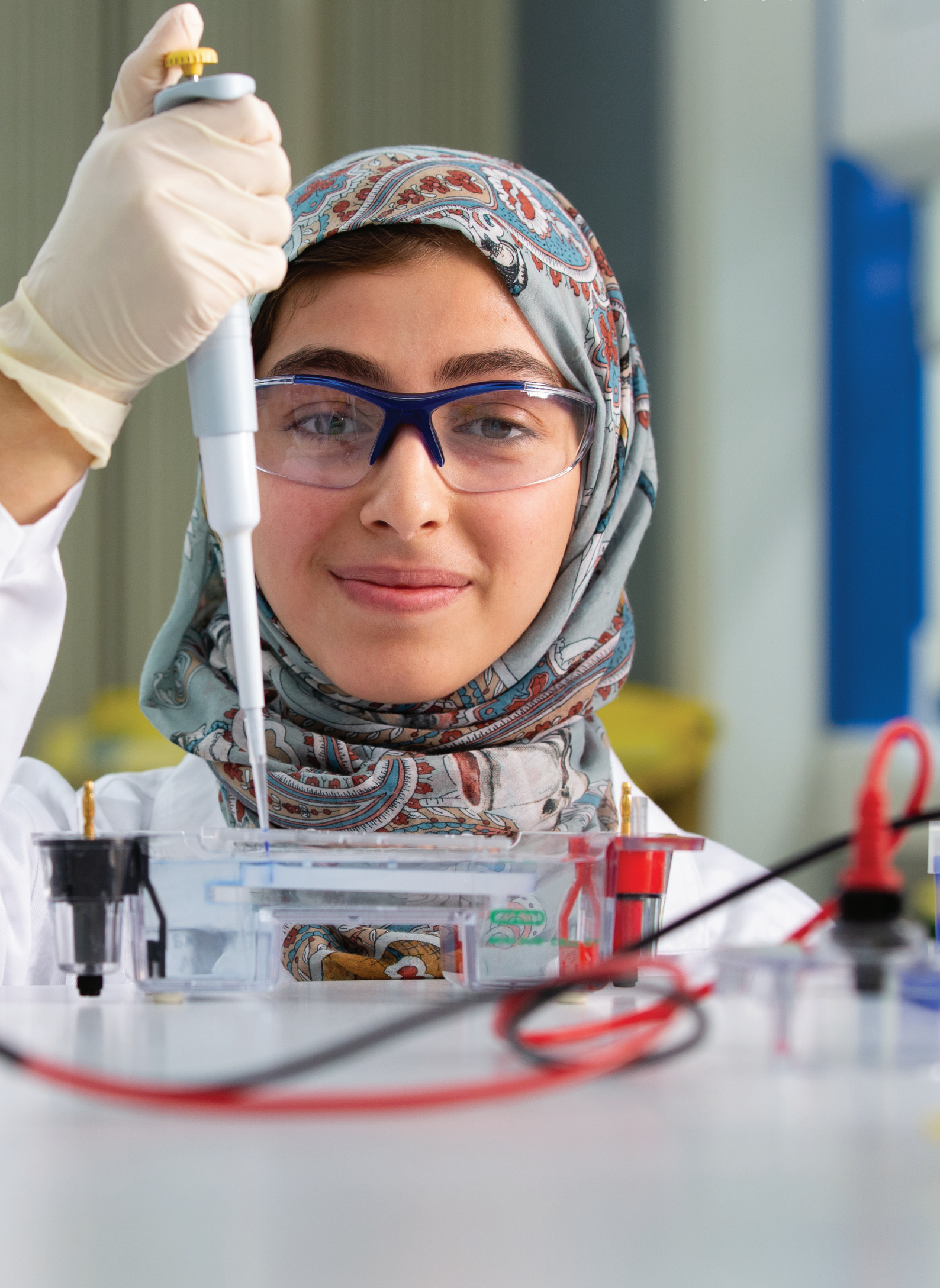
Find a supervisor at curtin.edu/hdr-supervisors.

Alternatively, contact our Graduate Research School for more information:

Tel: +61 8 9266 3337

Email: GRS.FutureStudents@curtin.edu.au

Web: research.curtin.edu.au/postgraduate



RESEARCH DEGREES

For the latest course information, visit study.curtin.edu.au.

For important notes on course fees and admission criteria, see [page 47](#).

COURSE NAME	CRICOS CODE	INDICATIVE FIRST YEAR FEE (AUD\$) ¹
MASTER OF RESEARCH		
Agriculture	0100022	\$38,000
Biomedical Science	0100023	\$40,800
Chemistry	0100024	\$38,000
Earth and Planetary Sciences	0100025	\$38,000
Economics and Finance	0100026	\$36,600
Environmental Science	0100027	\$38,000
Fine Arts	0100028	\$36,000
Marketing	0100029	\$36,600
Physics	0100030	\$38,000
MASTER OF PHILOSOPHY		
Accounting	061492C	\$36,600
Architecture	061524M	\$36,000
Biomedical Science	061548C	\$40,800
Building Studies	061525K	\$36,000
Business Administration	061540M	\$36,600
Chemical Engineering	061495M	\$38,000
Chemistry	061496K	\$38,000
Civil Engineering	061497J	\$38,000
Computer Science	061498G	\$38,000
Corporate Sustainability	061499G	\$38,000
Creative Arts (Cultural Heritage Studies)	061529F	\$36,000
Economics and Finance	061542J	\$36,600
Education	061531A	\$36,000
Electrical and Computer Engineering	061500G	\$38,000
Environment and Agriculture	072468A	\$38,000
Exercise, Sports and Rehabilitation Science	097863F	\$40,800
Geographic Information Science	074579M	\$38,000
Geology	061503E	\$38,000
Geophysics	061504D	\$38,000
Health Sciences	061550J	\$36,000
Human Communication Science	061551G	\$40,800
Humanities	061538E	\$36,000
Information Systems	061543G	\$36,600
International Health	061552G	\$34,700
Law	087732M	\$36,600
Management	061544G	\$36,600
Marketing	061545F	\$36,600
Mathematics	061508M	\$38,000
Mechanical Engineering	061509K	\$38,000
Media, Culture and Creative Arts	061535G	\$36,000
Medical Radiation Science	098149B	\$38,000
Mining and Metallurgical Engineering	061514B	\$38,000
Nursing and Midwifery	061553F	\$36,000
Occupational Therapy	061548C	\$40,800
Petroleum Engineering	061517K	\$38,000
Pharmacy	061548C	\$40,800
Physics	061518J	\$38,000
Physiotherapy	061551G	\$40,800
Public Health	061550J	\$36,000
Public Policy	065873B	\$36,600
Public Relations	061547D	\$36,600
Psychology	061551G	\$40,800
Rural Management	061519G	\$36,600
Social Work and Social Policy	061550J	\$36,000
Surveying and Mapping	061522B	\$38,000

This indicative first year fee is based on the lowest combination of units. Depending on the specific units you can choose to study within a course, this fee may increase. All fees are subject to annual increases of no more than five per cent. To calculate unit fees, visit curtin.edu/fee-calculator.

COURSE NAME	CRICOS CODE	INDICATIVE FIRST YEAR FEE (AUD\$)#
DOCTORAL DEGREES		
Business Administration	023971C	\$33,600
Education	023972B	\$33,500
Sustainable Development	085112M	\$32,800
DOCTOR OF PHILOSOPHY		
Accounting	043967M	\$36,600
Applied Geology	043949B	\$38,000
Architecture and Interior Architecture	043932M	\$36,000
Art	043970E	\$36,000
Biomedical Sciences	043971D	\$40,800
Business	006093G	\$36,600
Chemical Engineering	043951G	\$38,000
Chemistry	043968K	\$38,000
Civil Engineering	043952G	\$38,000
Computing	043987G	\$38,000
Construction Management	050585M	\$36,000
Cultural Heritage	043966A	\$36,000
Design	043988F	\$36,000
Economics and Finance	043989E	\$36,600
Education	043960G	\$36,000
Electrical and Computer Engineering	043990A	\$38,000
Engineering	050587J	\$38,000
Environment and Agriculture	072469M	\$38,000
Exercise Science, Sports and Rehabilitation Science	097862G	\$40,800
Exploration Geophysics	043954E	\$38,000
Graduate Business	043961F	\$36,600
Health Sciences	043958A	\$36,000
Human Communication Science	043962E	\$40,800
Humanities	043959M	\$36,000
Information Systems	043991M	\$36,600
International Health	052806J	\$36,000
Law	092772E	\$36,600
Management	043993J	\$36,600
Marketing	043994G	\$36,600
Mathematics and Statistics	043955D	\$38,000
Mechanical Engineering	043956C	\$38,000
Media, Culture and Creative Arts	043995G	\$36,000
Medical Radiation Science	043957B	\$38,000
Mining and Metallurgical Engineering	044005J	\$38,000
National Drug Research Institute	043964C	\$36,000
Nursing and Midwifery	043996F	\$36,000
Occupational Therapy	043997E	\$40,800
Petroleum Engineering	006095F	\$38,000
Pharmacy	043998D	\$40,800
Physics	043950J	\$38,000
Physiotherapy	043999C	\$40,800
Psychology	043965B	\$40,800
Public Health	044001B	\$36,000
Public Policy	065874A	\$36,600
Social Sciences	048085E	\$36,000
Social Work and Social Policy	044003M	\$36,000
Spatial Sciences	006092J	\$38,000
Urban and Regional Planning	050586K	\$36,000

SCHOLARSHIPS



SCHOLARSHIPS

Scholarships offer financial, academic and career support, giving you more opportunities to gain new skills, expand your horizons and add to your portfolio of achievements.

Scholarships are not loans – the money is given to you provided you fulfil key requirements such as academic performance, work experience or volunteer commitments.

There are many scholarships available. Some are offered for academic achievement, such as the Curtin Excellence Scholarship, which is awarded to students with an ATAR from 96 who meet the eligibility criteria.

Other scholarships are designed to make university possible for students who face financial hardship.

ELIGIBILITY CRITERIA

Scholarships are offered through a competitive process for students who are:

- from low-income backgrounds
- from Indigenous backgrounds
- high-achievers
- from regional areas
- studying specific courses.

Each scholarship has different eligibility criteria, application procedures and closing dates, so check these early.

FURTHER INFORMATION

Visit our scholarships website for:

- up-to-date information and eligibility criteria for available scholarships
- tips for writing a good scholarship application
- a sign-up email alert service that lets you know when a scholarship matching your selection criteria is open for applications. You will also receive a reminder email one week before applications close.

scholarships.curtin.edu.au

FEES AND ADMISSION CRITERIA



FEE INFORMATION

The tuition fees (shown in Australian dollars) reflect the cost of one year of study, based on a normal full-time workload of 100 credits per semester (200 credits per year) unless otherwise stated.

If you study more than 100 credits per semester, you will have a higher annual tuition fee.

The tuition fee is calculated and charged on a semester basis. For more information on fees, and to access the fee calculator and unit costs, visit curtin.edu/int-fees.

Note: All listed fees are subject to annual increases.

INCIDENTAL FEES

Some courses require compulsory additional payment for retainable materials and course-related fees. These are known as essential incidental fees. Some individual units may have optional fees for course materials and other course-related items.

REFUND AGREEMENT

The categories under which Student Administration and Fees will assess an application for refund are laid out in the University's International Student Refund Agreement. The agreement is supplied to you with your Letter of Offer and can also be accessed online at curtin.edu/fees-refunds, where you can also view the most up-to-date information as the policy is subject to change.

UNDERGRADUATE CUT-OFF SCORES KEY

GCE – General Certificate of Education

STPM – Sijil Tinggi Persekolahan Malaysia

HKDSE – Hong Kong Diploma of Secondary Education

IB – International Baccalaureate

Ontario Gr 12 – Ontario Grade 12

ATAR – Australian Tertiary Admission Rank – applicable to all Australian matriculation

WAUFP – Western Australian Universities' Foundation Program

India (CBSE) – India Senior School Certificate awarded by the Central Board of Secondary Education (CBSE)

India (HSC) – Higher Secondary School Certificate (Standard Year 12 Qualification) awarded by one of the recognised Higher Secondary Education Boards in India

Sri Lanka – GCE A-level issued by the Department of Examinations

Score conversion for GCE A-level

A grade = 5 points

B grade = 4 points

C grade = 3 points

D grade = 2 points

E grade = 1 point

Subject grades conversion for STPM

A = 5 points

A- or B+ = 4 points

B = 3 points

B- or C+ = 2 points

C = 1 point

Note: Scores for individual prerequisites may be taken into consideration for assessment purposes.

APPLYING TO CURTIN

You are an **international student** if:

- you are not a permanent resident of Australia or New Zealand, *or*
- you are required to hold a student visa to study in Australia.

HOW TO APPLY

There are five main steps to follow:

1. Check that you meet our admission criteria
2. Gather your application documents
3. Submit your application
4. Accept your Curtin offer
5. Apply for a student visa.

1. CHECK THE ADMISSION CRITERIA

There are two key admission criteria:

(i) Academic criteria.

curtin.edu/academic-req

(ii) English language proficiency.

curtin.edu/english-criteria

If you do not meet both of the criteria above, you could gain admission to your chosen Curtin course through another pathway:

- **Other qualifications:** Do you have qualifications obtained in a country other than Australia?
curtin.edu/os-quals
- **Curtin College:** You may gain admission to a Curtin University course by completing a Curtin College course.
curtincollege.edu.au
- **Curtin English:** Completing a program at our Curtin English language centre will help you meet the English language proficiency. If you receive an offer to study at Curtin but don't meet the English requirement, you may qualify for a free 10-week program.
english.curtin.edu.au

2. GATHER YOUR DOCUMENTS

You must provide certified copies of your qualifications and English language proficiency documents.

curtin.edu/int-applidocs

3. SUBMIT YOUR APPLICATION

You may prefer to submit an application through a registered Curtin agent.

curtin.edu/agents

The instructions below are for applicants who choose not to use a registered Curtin agent.

Applying online: Select the course you want to study, at study.curtin.edu.au, and click the tab HOW TO APPLY. From here, you can begin the online application process. Make sure you have electronic copies of your certified documents ready to upload.

Applying by mail or email: Download the application form and post or email your completed application, as specified at the end of the form.

curtin.edu/int-apply

Most applications will be assessed within two weeks of submission.

4. ACCEPT YOUR CURTIN OFFER

Successful applicants will receive an offer package, which explains how to accept Curtin's offer and how to enrol. When your enrolment is completed you will receive a Confirmation of Enrolment.

5. APPLY FOR YOUR STUDENT VISA

Apply for your student visa after you receive your Confirmation of Enrolment. If you will be under 18 when you start your Curtin course, you must nominate a student guardian.

homeaffairs.gov.au/trav/stud

WHERE TO GET FURTHER INFORMATION

International Student Services

Tel: 1300 222 888 (select options 2-2-1)

+61 8 9266 5888 (if calling from overseas)

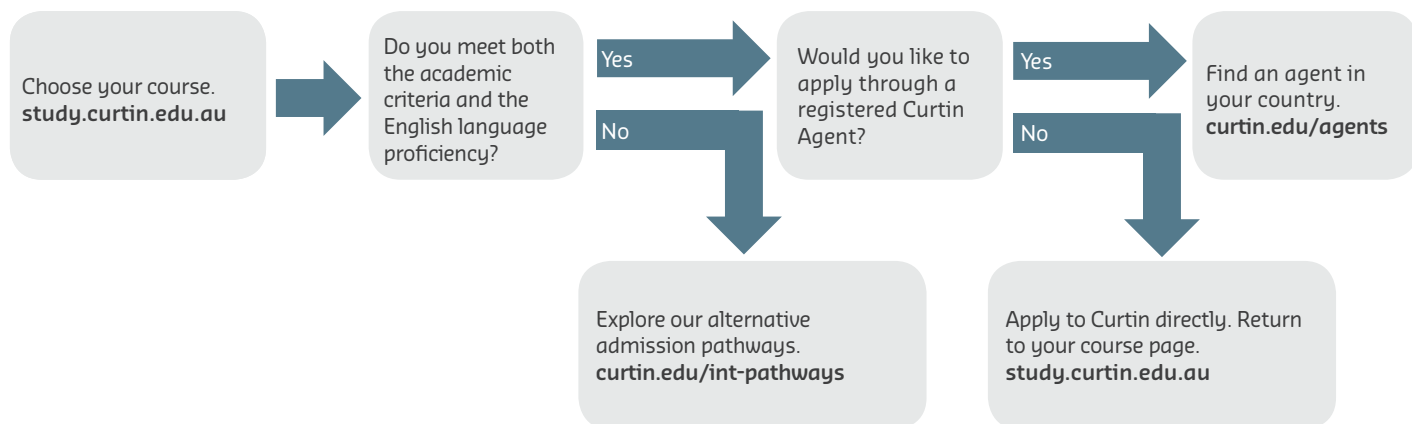
Online: askcurtin.custhelp.com/app/ask

Web: curtin.edu/int-contact

PREPARE TO DEPART

We want to make your transition to study in Australia as smooth as possible. Use our pre-departure resources to help you prepare for your move to Perth.

international.curtin.edu.au/pre-departure





Let us help you take the next step with personalised information on studying at Curtin University.



StudyPerth represents and promotes Western Australia's internationally recognised education sector by conducting a wide range of profile-raising and marketing activities throughout the world. It is a unique consortium of 32 universities, colleges and schools in Perth which provide education services to the international community.



The Australian Technology Network of Universities (ATN) brings together five of the most innovative and enterprising universities in Australia. The ATN is recognised as a global leader of a new generation of universities focused on industry collaboration, real-world research with real-world impact and produce work-ready graduates to become global thinkers in business and the community.

CURTIN UNIVERSITY

Kent Street, Bentley, Perth,
Western Australia 6102

Telephone: +61 1300 222 888

VOIP Number: +61 8 9266 5888

Email: study@curtin.edu.au

CRICOS Provider Code 00301J

JOIN THE CONVERSATION!



[youtube.com/curtinuniversity](https://www.youtube.com/curtinuniversity)



[@curtinuniversity](https://www.instagram.com/curtinuniversity)



科廷大学CurtinUniversity



[@CurtinUni](https://twitter.com/CurtinUni)



[facebook.com/curtinuniversityinternationalstudents](https://www.facebook.com/curtinuniversityinternationalstudents)



[i.youku.com/curtinuniversity](https://www.i.youku.com/curtinuniversity)