

DEAKIN COLLEGE

in association with



International Student Guide 2019–20

Melbourne and Geelong, Australia
Jakarta, Indonesia



Your future starts right here



The direct pathway to achieving a Deakin University degree.



Supportive study environment designed to help you succeed.



Fast track study options available. Complete your course in eight or twelve months.



More than 22,000 students have progressed into a Deakin University degree.



Highest overall student satisfaction among Victorian universities for the last 9 years*.



Ranked 29th in the world in the QS Top 50 Under 50, 2018

*Australian Graduate Survey 2010-2015, Graduate Outcomes Survey 2016-2018, QILT.



Contents

- 1 Your future starts right here
- 3 Welcome
- 5 Why choose Deakin College?
- 6 Your pathway to Deakin University
- 7 Secure your future through Deakin
- 9 Deakin College locations
- 13 Student Life and Support Services
- 15 Accommodation
- 16 Under-18 Management
- 17 Deakin College Foundation Program
- 19 Choose your course
- 21 Diploma of Business
- 23 Diploma of Commerce
- 25 Diploma of Communication
- 27 Diploma of Construction Management
- 29 Diploma of Design
- 31 Diploma of Engineering
- 33 Diploma of Film, Television and Animation
- 35 Diploma of Health Sciences
- 37 Diploma of Information Technology
- 39 Diploma of Science
- 41 Masters Qualifying Program
- 43 Academic entry requirements
- 45 English language
- 46 Key Terms
- 46 Academic calendar
- 47 How to apply to Deakin College
- 48 Application form
- 50 Scholarships
- 50 Open day dates

Welcome



'Deakin College provided me a strong foundation for my bachelor degree at Deakin University. They delivered a supportive environment which opened up opportunities for me to be a mentor. The highlight of my time at the college was being part of the student committee.'

Vuochsing Ly, Cambodia
Diploma of Business
Bachelor of Commerce

Message from the President and Vice-Chancellor of Deakin University

Professor Iain Martin
President and Vice-Chancellor, Deakin University

Congratulations on your decision to study at Deakin College.

Deakin College graduates receive the very best preparation for a successful university career. You'll find your Deakin College experience encourages the collaborative and independent learning that will prepare you for lives and careers in our rapidly changing world. Deakin College provides a technology-rich and inclusive learning environment focussed on helping all its students to succeed.

Since 1996, Deakin College has given over 22,000 students the opportunity to progress into a degree program at Deakin. We look forward to welcoming you when you successfully complete your studies at Deakin College.

Message from the College Director and Principal of Deakin College

Hamid Khattak
College Director and Principal, Deakin College

We appreciate that the decision to continue studying is a serious commitment made by you. At Deakin College you will join almost 3000 Australian and international students enrolled in our courses.

As a commencing student of Deakin College, you will benefit from a number of advantages in your studies at our College involving new approaches to teaching and learning, student support, digital technologies and a wider suite of course offerings at Deakin University.

The College will also provide an improved student experience and superior student outcomes as well as reflecting the continuously growing reputation of Deakin University. We are committed to giving you every opportunity to succeed in your studies, and I invite you to take the first step towards achieving your educational goals with Deakin College.

Our vision

Deakin College is a direct pathway to Deakin University, providing the Deakin student experience that supports successful transition to further studies at the University.

We deliver:

- innovative teaching and learning
- a positive student experience
- engagement with digital learning technologies.

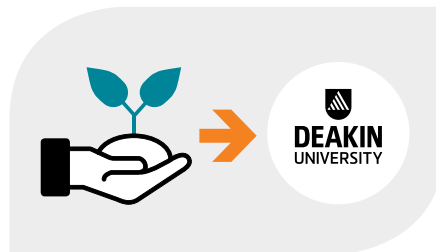


Why choose Deakin College?



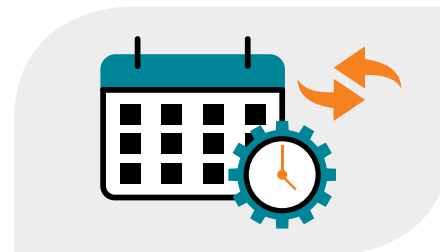
Located on Deakin campuses

Study on a Deakin University campus with full access to accommodation, support services and university facilities.



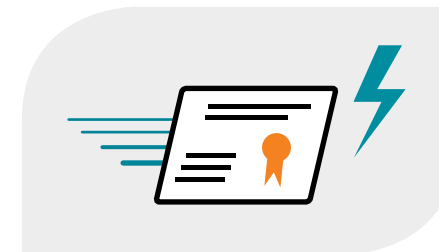
Supportive learning environment

You will have access to health services and free study support, as well as online resources to assist with study and writing skills, assignment preparation and examination techniques – all designed to help you transition smoothly to Deakin University degrees.



Flexible start dates

With three intakes per year, you can choose to enter a course when it is convenient for you. Deakin College offers three trimesters, commencing in March, June and October.



Fast-track options

Deakin College diploma courses offer a fast-track option, allowing you to complete a program in just eight months. This makes it possible to enter university much earlier than students studying in a conventional pathway program.



Small class and tutorial groups

Small class sizes are one of the benefits of studying at Deakin College. With a maximum of 30 students per class, complemented by small group tutorials and workshops, you will receive intensive academic contact and support.



Convenient transport

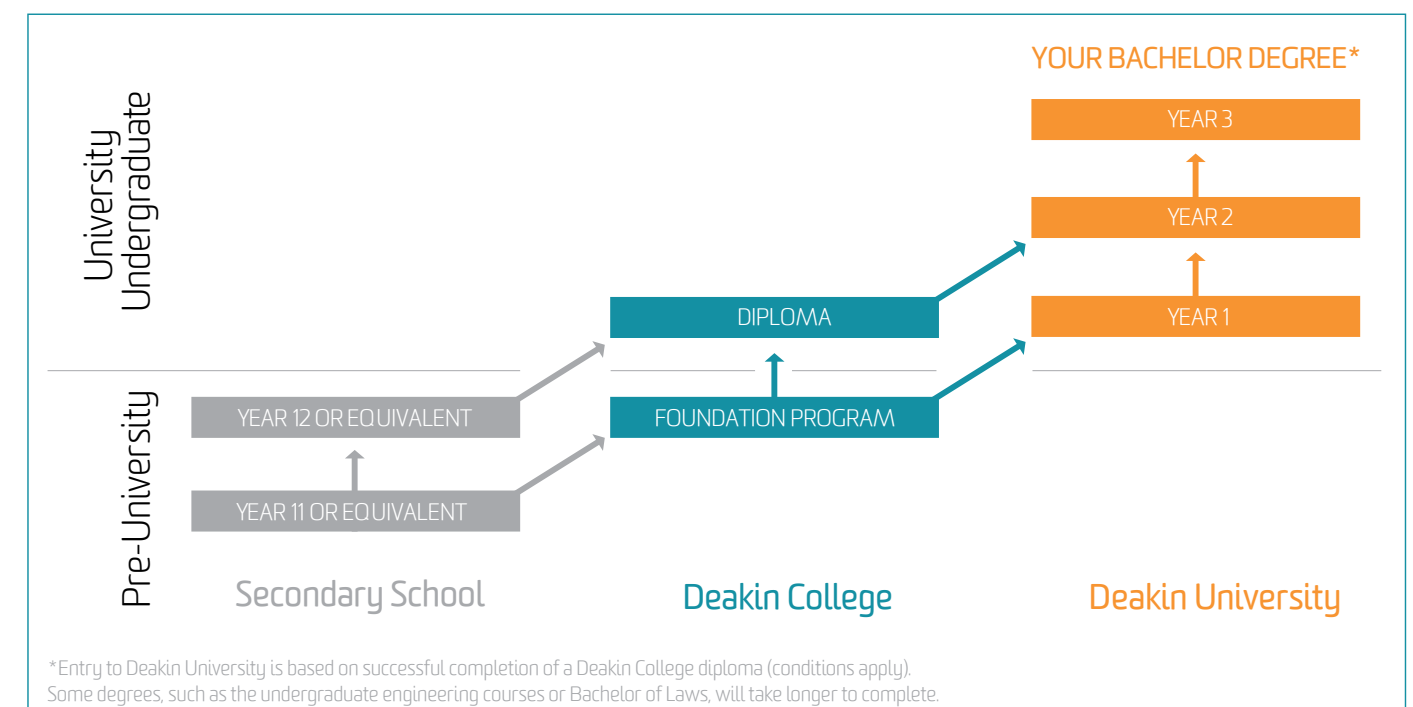
All Deakin College campuses are conveniently located and easily accessible by public transport. For more information on public transport in Melbourne and Geelong, visit: ptv.vic.gov.au vline.com.au

Deakin's preferred pathway provider
with guaranteed entry
into second year of
the bachelor degree



Burwood building

Your pathway to Deakin University



Secure your future through Deakin

Deakin's practical and applied approach to learning allows you to take your next step with confidence.

Study at a multi-award winning, internationally recognised university, and join more than 61,000 high-achieving students who have chosen Deakin for its:

- excellent graduate outcomes
- practical, hands-on approach to learning
- access to state-of-the-art facilities
- teachers with experience and influence in their field
- courses that are informed by industry and offer real-world learning
- exceptional industry connections and work placement programs, in Australia and overseas
- flexible study options, whether on campus or online.



Join the #1 university for skills development in Victoria*

Gain the practical skills and know-how that employers want. From our \$55 million engineering training facility to our dedicated studios and hi-tech equipment for the creative arts, gain expertise in our state-of-the-art facilities to become one of our highly sought-after graduates.

Industry connections and work placements that give you real-world experience

Our close ties with industry mean that you get:

- courses matched to current industry practice
- a well-recognised qualification that stands out to employers
- work placements, internships and study abroad opportunities so that you graduate work-ready.

Get a world-class education

When you study at Deakin, you're choosing a leading university—ranked in the top 1% worldwide[^]. In fact, we have been awarded a five-star rating by the prestigious university ranking organisation, Quacquarelli Symonds (QS). We are leading the way in a broad range of areas, praised for our cutting-edge facilities and internationally renowned for our research and teaching.

Learn from leaders in their field

Our outstanding academic staff are active participants and influencers in their fields. They share their skills and knowledge and give you valuable industry insights.



We will support your learning

Whether you would like to improve your study skills or get help with a tricky assignment, there is plenty of support available. Deakin students rely on student mentors, online resources and, of course, our staff. Our easy-to-use online system, DeakinSync, helps like-minded students to connect online, collaborate and support each other.

The #1 university in Victoria for student satisfaction

Highest for overall student satisfaction in Victoria nine years running[#], with students being particularly happy⁺ with our:

- teaching
- learning resources
- student support
- skills development
- learner engagement.

Close links with industry

Deakin University maintains close links with industry, government, departments, professional associations and other educational providers to ensure courses are developed and reviewed with industry and professional input.

* Undergraduates, Quality Indicators for Learning and Teaching (QILT) website (2018 update)

[^] Academic Ranking of World Universities 2018

[#] Australian Graduate Survey 2010–2015, Graduate Outcomes Survey 2016–2018 (GOS)

⁺ More satisfied than the national average, Quality Indicators for Learning and Teaching (QILT) website (2018 update).

Deakin College locations

Deakin College has four campus locations. In Australia we are located on three Deakin University campuses in the state of Victoria. One is in metropolitan Melbourne and the other two are in Geelong. The fourth campus is in Jakarta, Indonesia.



Melbourne, Australia

Victoria's capital city, Melbourne, is recognised as one of the world's most liveable cities. Melbourne is a friendly, multicultural city, offering world-class entertainment, dining, beautiful gardens and excellent shopping within the central business district and sprawling suburbs, each with their own unique character and hidden gems to discover.

Situated on Australia's south-east coast, Victoria's dramatic coastlines, deserts, snowfields, and mountains, are all within easy reach. Explore countless beaches and idyllic towns dotted around the state and visit the Mornington Peninsula to enjoy the region's renowned wine, food, culture and activities.

Melbourne Burwood Campus

The Melbourne Burwood Campus is Deakin University's largest campus. The site is continually evolving to match students' needs both in and outside of the classroom. Students enjoy abundant learning and social areas in a relaxed atmosphere.

Getting to Burwood

Easily accessible, the Campus sits between the Lilydale/Belgrave, Glen Waverley and Alamein train lines. A number of bus routes and tram lines service the campus, as well as a network of bike paths.

visit: ptv.vic.gov.au



Geelong, Australia

Only an hour from central Melbourne, Geelong is Victoria's second largest city. With all the modern amenities including excellent cafés, restaurants, shopping and recreational facilities, and close to some of the best surf beaches on earth, Geelong offers a clean, healthy and relaxed living environment.

Geelong's surrounding areas offer their own entertainment and discovery. Tours and incredible day trips to the world-famous Great Ocean Road offer everything from sleepy coastal towns to incredible food, views and activities.



Waterfront campus

Geelong Waterfront Campus

The Geelong Waterfront Campus is located in the central business district of Geelong. A modern, impressive campus centre with creative areas to catch up or study, striking heritage architecture and views of the spectacular shores of Corio Bay make the Geelong Waterfront Campus a truly iconic site.

Getting to Geelong, Waterfront

The campus is in the centre of Geelong, Victoria's second-largest city. It is just 400m away from Geelong station, which is about one hour from Melbourne and two and a half hours from Warrnambool by train.

vline.com.au

You can also catch a suburban bus to campus, or to the bus interchange on Moorabool Street, just 700m from campus.

Deakin provides a convenient, free shuttle bus between the Geelong Waurin Ponds and Waterfront campuses.

Geelong Waurin Ponds

Waurin Ponds is home to cutting-edge facilities such as Carbon Nexus, Centre for Advanced Design in Engineering Training (CADET) and Deakin Medical School, all set amongst expansive grounds that encourage students to make the most of outdoor space.

Getting to Geelong, Waurin Ponds

The campus is at the start of the Great Ocean Road. The closest train station is Geelong Waurin Ponds, which is about an hour and a half from Melbourne's city centre. From there, you can catch route 41 or 42 buses directly to Deakin College Waurin Ponds campus in under 10 minutes.

vline.com.au



Waurin Ponds campus

Jakarta, Indonesia

Jakarta, the capital of Indonesia, is located on the northwest of Java Island. It is a dynamic and vibrant city, home to over 10 million people from around the world. As the industrial, economic and travel hub of the country, Jakarta is a mixture of languages and contrasting cultures, marrying a rich history together with modern living. Students can enjoy exploring the city's tourist attractions, shopping malls and famous street food.

Jakarta Campus

The Jakarta Campus is located in central Jakarta and boasts bright modern classrooms and excellent facilities with access to cafés, restaurants, mini market and ATMs in the building.

Accommodation

The most common student accommodation in Indonesia is renting a room in a house. Called a 'Kost', accommodations are usually fully equipped with a communal kitchen and living spaces. Campus staff can help to organise your accommodation.

Foundation Program

The Deakin College Jakarta Campus Foundation Year follows the same syllabus and curriculum as the Deakin College Foundation Program, with only minor differences in the sequence of trimester units. For more information, visit deakincollege.edu.au/programs/foundation-jakarta

Fees

Foundation Program
AUD\$12,200

Diploma of Commerce
AUD\$13,500

Diploma of Communication
AUD\$13,500

Diploma of Information Technology
AUD\$13,500



Jakarta Indonesia

Facilities and Amenities Fee

A one-time fee of AUD\$600 (2019) is payable in Indonesian Rupiah (IDR) for new students. The fee offsets some of the costs associated with providing the following:

- water dispenser
- student committee meeting food and beverage
- in-class photocopies
- student internal trimester activities/events
- unlimited Internet access on all PCs
- student external activities/events
- unlimited Internet Wi-Fi
- orientation expenses, e.g F&B
- sport activities: basketball, futsal, etc.
- student lounge: rental, service, charge, electricity
- academic workshops tutor
- table tennis, football, satellite television
- academic workshops food and beverage

Cost of Living

Living costs for Jakarta are approximately AUD\$7,000–AUD\$10,000 per year.

* Fees are correct as of May 2019

Want more campus info?

Campus maps and more information can be found at deakincollege.edu.au/about.

If you would like to book a tour of one of Deakin's campuses, please email:

deakincollege@deakin.edu.au.

Student Life and Support Services

At Deakin College, we recognise the importance of meeting both your academic and personal needs. We offer a range of services and facilities to make your time at Deakin College as enjoyable as possible. Our qualified staff will also support you as you adjust to studying in a new environment

Orientation and Enrolment

Orientation and enrolment programs commence the week before each trimester. You will meet your teachers, receive your student ID card and learn about enrolling in classes and creating a timetable. More information will be provided with your letter of offer. Attendance is compulsory.

Airport transfer service

This bus service is free for students enrolled at Deakin, and takes you from the airport directly to Deakin College or your Deakin Residence.

airport-pickup.mibt.vic.edu.au

Learning and health support

As a student you have access to Deakin University's large support network:

- Free, confidential personal or welfare counselling service
- Language and learning advisors and additional study support services
- Study skills workshops: study and writing skills, assignment preparation and examination techniques
- Health Services Unit: general medical care, health promotion and stress management
- Chaplain: spiritual and pastoral care (Australian campuses only)

deakincollege.edu.au/student-services

Study skills support

Make an appointment with a Student Learning Advisor for assistance with specific study skills such as referencing, essay structure, time management and exam preparation.

deakincollege.edu.au/student-learning-advisors

Student Committee

The Student Committee (SC) acts as the voice of our students, ensuring any student concerns reach Deakin College staff. Regular meetings ensure that students communicate with Deakin College regularly. The SC also organises social events to foster a sense of community at Deakin College.



Clubs and societies

Through the Deakin University Student Association (DUSA), you can build friendships through a wide choice of clubs, sports and social events, as well as take trips and save on study costs. For more information, visit: dusa.org.au.

Campus facilities

Deakin College students on Australian campuses have access to all Deakin University facilities including sport and recreational activities, libraries, bookshops, 24-hour computer laboratories and campus shops.

deakin.edu.au/life-at-deakin/student-life



Disability support

We are committed to providing equal opportunities to students with disabilities. Deakin offers support services for students with a disability, health or mental health conditions that affect their study. Speak to Deakin College about how we can support you and your studies.

Deakin College encourages students to provide all information regarding the nature of their disability during the application and enrolment process to ensure we can meet their needs.

Deakin College Student Portal

All students have access to the Deakin College Student Portal which provides important study information including unit outlines, course notes, examination timetables, results, forms and re-enrolment details.






Multifaith Chaplaincy

The Deakin chaplaincy program provides spiritual and pastoral care for all students. Our multifaith program is supportive, diverse and accepting. We provide opportunities to join workshops, prayer groups and reflection sessions so you can extend your faith. For more information on Deakin's Multifaith Chaplaincy, visit

deakin.edu.au/students/health-and-wellbeing/multifaith-chaplain

Find us on social media

Follow us on social media and see what's happening at Deakin College before you start studying.

-  facebook.com/DeakinCollege
-  instagram.com/deakincollege_official
-  twitter.com/deakincollege
-  snapchat.com/deakincollege
-  youtube.com/deakincollege

Feel at home at Deakin

Make Deakin your home and enjoy open and inviting spaces for socialising and studying, spacious new buildings and full WiFi coverage.

Accommodation

Australian campuses

Be sure to arrange your accommodation as soon as you know which campus you will be studying at. Options will depend on your campus location, budget and your preferred type of accommodation.

On-campus accommodation

Living on campus means you can immerse yourself in the Deakin College experience, meet other students, and easily adjust to life at university. Designed to facilitate your studies and personal life, each Deakin residence is comfortable, secure, and welcoming. You will have access to modern facilities, a 24/7 reception, and Deakin College on your doorstep.

On-campus accommodation is available at the Melbourne Burwood Campus, Geelong Waurin Ponds Campus and Geelong Waterfront Campus.

For more information on costs, application procedures and key dates, visit:

deakin.edu.au/accommodation

Off campus housing service

If you prefer to live off campus, Deakin College can suggest accommodation options including full board, share housing and rental properties through Deakin University Student Life. For more information, visit:

studystays.deakin.edu.au

Homestay

Living with a family or resident is a great way to improve language skills and learn about local culture. For more information, visit

student-accommodation.com.au

Homestay placement fee: AUD\$200*

* Fees are correct as of May 2019

Cost of living

Your living expenses will depend on your individual lifestyle and accommodation. Deakin College estimates that a single international student requires AUD\$20,000–AUD\$25,000 per year to live in Melbourne and AUD\$16 000–AUD\$19 000 per year to live in Geelong.



Burwood campus



Student Residence Accommodation Burwood

Under-18 Management

Students under 18 years of age are classified as minors and must meet immigration requirements for accommodation, support and general welfare arrangements before a student visa is granted.

Applying for U18 Management

To apply for U18 Management, you will need to make a formal application to enrol at Deakin College and indicate that you require U18 Management. Once your enrolment has been confirmed, Deakin College will assign you a residence and guardian.

Appointed Guardian

You will be matched with a dedicated guardian who will provide you one-on-one support and act as a point of contact for your parents. You and your guardian will meet once a fortnight and you can maintain regular contact by phone or email.

Payment

To enter the U18 Management Program you must first pay a AUD\$200 non-refundable application fee. Once approved, the program costs AUD\$8 per day in Guardianship fees until you turn 18 and leave the program. For more information, visit

deakincollege.edu.au/under-18s



Deakin College Foundation Program

The Deakin College Foundation Program is equivalent to upper secondary school (Year 12) and university foundation programs. It aims to prepare you for further study in a Deakin College diploma or for entry into the first year of a selected Deakin University bachelor degree.

Course outline

The course comprises of a standard or extended track program. The standard track program consists of eight academic units: four core units and four elective units. The Extended track program has an additional four core units, one of which is chosen from two alternative core units.

Various support services focusing on language, literary and numeracy assistance are also available to help you in your studies. Each unit includes four hours of class contact per week. Assessment for all units is continuous and includes tests, assignments and case study analysis. Most units have a final two hour examination. To graduate from the Deakin College Foundation Program, you must complete and pass all eight units in the standard program or 12 units in the extended program.



Who should apply?

The Foundation Program is aimed at students who have completed the equivalent of Australian high school Year 11 (see page 36 for country specific academic requirements).

Location

Melbourne Burwood Campus
Geelong Waterfront Campus

Duration

8 months (Standard track)
12 months (Extended track)

Academic entry requirement

Year 11 or equivalent

2019 Tuition Fees*

Standard \$25,350
Extended \$29,900

Intakes

March, June and October

English entry requirement

Standard track: IELTS score of 5.5
(with no band score below 5)

Extended track: IELTS score of 5.0
(with no band score below 4.5)

Course structure

Standard Program

Complete and pass eight units:

Unit selection for first trimester

- FNDS013 Advanced Academic Communication Skills (Core)
- FNDS014 Intercultural Studies (Core)
- FNDS015 Information Technology (Core)
- Elective

Unit selection for second trimester

- FNDS016 Advanced Academic Writing and Research (Core)
- Elective
- Elective
- Elective

Extended Program

For students who do not meet the entry requirements of the standard track program, an extended track program is also available with an additional four units that need to be completed before continuing with the standard track program.

Complete and pass four units:

Unit selection for first trimester

- FNDS010 Introduction to Academic Communication (Core)
- FNDS011 Introduction to Academic Writing (Core)
- FNDS012 Computer Skills (Core) and
- FNDH023 Essential Mathematics (Alternative core)* Or
- FNDA023 Mass Communication (Alternative core)

*If students are undertaking the Business or Engineering / IT stream, it is suggested they undertake Essential Mathematics.

Students then progress to the standard track upon successful completion.

Elective Units (choose one stream below)

Arts Electives**

- FNDA020 Society and Culture
- FNDA021 Law
- FNDA022 Media
- FNDA023 Mass Communication
- FNDB022 Management

- FNDB021 Economics
- FNDB023 Marketing

Business Electives**

- FNDE020 Introduction to Systems Analysis
- FNDB021 Economics
- FNDH023 Essential Mathematics
- FNDE021 Mathematics I
- FNDE023 Mathematics II
- FNDB020 Accounting
- FNDB022 Management
- FNDA021 Law
- FNDB023 Marketing

Engineering/IT/Science Electives**

- FNDE020 Introduction to Systems Analysis
- FNDH023 Essential Mathematics
- FNDE021 Mathematics I
- FNDE023 Mathematics II
- FNDE022 Physics
- FNDB022 Management
- FNDH021 Chemistry
- FNDE024 Biology
- FNDH022 Human Biology

Health Electives**

- FNDH023 Essential Mathematics
- FNDE021 Mathematics I
- FNDE023 Mathematics II
- FNDE022 Physics
- FNDB022 Management
- NDH021 Chemistry
- FNDE024 Biology
- FNDH022 Human Biology

Foundation to Deakin University first year entry

After successfully completing the Foundation program and meeting specified entry requirements, you may be eligible to apply for entry into the first year of selected Deakin University bachelor degrees that do not follow directly from Deakin College's diploma courses. For an updated list of the first year degree courses you can get into at Deakin University, please visit our website at deakincollege.edu.au/programs/foundation-program

Deakin College Jakarta Campus Foundation Year

The Deakin College Jakarta Campus Foundation Year is a foundation course that is run offshore at the Jakarta Campus. It follows the same syllabus and curriculum as the Deakin College Foundation Program, with minor differences in the sequencing of units each trimester. For more information on the Foundation Year in Jakarta, please visit deakincollege.edu.au/programs/foundation-jakarta

** Not offered at all locations

*Fees are correct as at April 2019.



Choose your course

Deakin College offers diplomas in Business, Commerce, Communication, Construction Management, Design, Engineering, Film, Television and Animation, Health Sciences, Information Technology and Science. These courses aim to prepare you for entry into second year of a relevant bachelor degree.

University-level Diplomas

Who should apply?

The diploma courses are aimed at students who have completed the equivalent of Australian school Year 12 or a selected post-secondary certificate or diploma (see pages 44–45 for country specific academic requirements).

Course structure

Each diploma consists of eight academic units, which you must complete and pass to receive the diploma. Most units have four hours of class per week. Assessment for all units is continuous and includes tests, assignments and case study analysis. Most units have a final two hour examination.

Course accreditation

The diploma courses are accredited by the Tertiary Education Quality and Standards Agency (TEQSA).

Diploma to degree transfer criteria

When you successfully complete a diploma, you will be eligible for entry into a Commonwealth Supported Place (CSP) in the second year of the relevant Deakin University undergraduate degree, provided you have met the following criteria:

- completed and passed eight Deakin College Diploma units*
- Achieve the required Weighted Average Mark (WAM).

Deakin College students who complete their course within the normal time frame for completion (based on full-time enrolment) are considered for entry to Deakin University based on the conditions that applied at the time they commenced their course.

Information sessions on transferring to Deakin University are held at Deakin College each trimester. Dates, times and reviews are posted on the Student Portal.

* Transfer to some degrees requires specific Deakin College units to be completed in order to receive the appropriate credits. For full details and conditions, please visit the Deakin College website and click on the relevant diploma: deakincollege.edu.au





Diploma of Business

The Diploma of Business is your pathway to the Bachelor of Business at Deakin University. Various specialist majors are available within Deakin’s Faculty of Business and Law, and you will also be able to select elective units in areas such as event management, public relations, project management and many others.

Employment and career options upon completing your Bachelor degree

Business analyst, project manager, customer relations manager, events manager, business development manager, procurement manager, business operations manager, small business owner or product manager.

Location

Melbourne Burwood Campus

Duration

8 or 12 months

Academic entry requirement

Year 12 or equivalent

English entry requirement

IELTS 5.5 (with no band score below 5.5)

2019 Tuition Fees*

\$29,400

Intakes

March, June and October

Course structure

Complete and pass 8 units:

- MAA104 Financial Literacy
- MAE203 The Global Economy
- MIS203 Making Sense of Information
- MMK101 Marketing Fundamentals
- MMM111 Intrapersonal Skills
- MMM132 Management
- MMM241 Entrepreneurship and Innovation
- MMM267 Business Logistics

Burwood (Melbourne) **B**
 Waterfront (Geelong) **WF**
 Waurin Ponds (Geelong) **WP**
 Warrnambool **WB**
 Cloud **C**

Second year entry to Deakin University*

	Trimester intake	WAM required for transfer				Maximum credits
		Burwood (Melbourne)	Waterfront (Geelong)	Waurin Ponds (Geelong)	Warrnambool	
Bachelor of Business B WF	T1 T2	50	50			8
Major sequences: Event Management B WF ^{^^} Film and Television B Organisational Psychology B WP ^{^^} People Management B WF ^{^^} Project Management B WF ^{^^} Property and Real Estate B ^{^^} Public Relations B WF ^{^^} Retail Management B WF ^{^^}						

T1 Trimester 1 entry T2 Trimester 2 entry T3 Trimester 3 entry
 * See page 11 for Diploma to Degree transfer criteria.
 ^^ Students may be required to undertake units in Cloud (Online) mode.

For up-to-date course information, core units and additional information, visit: deakincollege.edu.au/programs/diploma-business



*Fees are correct as at April 2019.

The Diploma of Commerce provides the foundation for further study in areas such as accounting, business law, economics, finance, international business, marketing and management at Deakin University. Completing a degree in one of these fields offers a wide range of career options across private and public-sector organisations.

Accounting, business consulting, business management, corporate law, economics, financial planning, human resource management, industrial relations, international trade, IT administration, IT system development, law reform, legal aid, marketing, network management, policy research and development, public administration.

Melbourne Burwood Campus
Geelong Waterfront Campus
Jakarta Campus

8 or 12 months

Year 12 or equivalent

IELTS 5.5 (with no band score below 5.5)

\$29,400

March, June and October

Complete and pass 8 units:

- MAA103 Accounting for Decision Making
- MAE101 Economic Principles
- MAF101 Fundamentals of Finance
- MIS171 Business Analytics
- MLC101 Law for Commerce
- MMK101 Marketing Fundamentals
- MMM132 Management
- MWL101 Professional Insight

	Trimester intake	Burwood (Melbourne)	Waterfront (Geelong)	Warrnambool	Cloud	Maximum credits
Bachelor of Commerce* B WF WB Major sequences: Accounting B WF WB Economics B WF ^{^^} Finance B WF ^{^^} WB ^{^^} Financial Planning B WF ^{^^} WB ^{^^} Food and Agribusiness WB ^{^^} Human Resource Management B WF Management B WF Management Information Systems B WF ^{^^} Marketing B WF ^{^^}	T1 T2 T3 ⁺⁺	50	50	50		8
Bachelor of Business Analytics B	T1 T2	50				8
Bachelor of Laws B WF WB [%]	T1 T2 ⁺⁺⁺	70	70	70		4 [#]
Bachelor of Property and Real Estate B	T1 T2	50				4 [#]
Bachelor of Business (Sports Management) B C	T1 T2* T3 ⁺⁺⁺⁺	50			50	8
Combined courses						
Bachelor of Commerce/Business Analytics B	T1 T2 T3	50				8 [#]
Bachelor of Commerce/Laws B WF WB [~]	T1 T2 T3 ⁺⁺⁺	70	70	70		8 [#]
Bachelor of Commerce/Science B	T1 T2 T3 ⁺⁺⁺	50				8 [#]
Bachelor of Property and Real Estate/Commerce B	T1 T2 T3	50				8 [#]
Bachelor of Property and Real Estate/Laws B	T1 T2	70				4 [#]

T1 Trimester 1 entry T2 Trimester 2 entry T3 Trimester 3 entry
 * See page 11 for Diploma to Degree transfer criteria.
 ++ Offered Burwood (Melbourne) only.
 +++ Offered at Burwood (Melbourne) and Cloud (Online) only.
 ++++ Not available in T3 2019
 +++++ Offered at Cloud (Online) only.
 ≠ Choice of majors limited and not available on all campuses.
 # These degrees require you to take additional first year degree units when you transfer to Deakin University. The degree may therefore take longer to complete.
 ~ First 2 years of course only.
 ^^ Students will be required to undertake units in Cloud (Online) mode.
 % No intake offered at Warnambool in 2020.

For up-to-date course information, core units and additional information, visit: deakincollege.edu.au/programs/diploma-commerce



Diploma of Communication

This diploma offers a wide range of unit choices leading to the second year of the relevant Deakin University degree. Areas of study include advertising, communications, journalism, digital media and public relations.

Employment and career options upon completing your Bachelor degree

Advertising agency roles, account management, media planning, journalist, copywriting and art direction, media policy and management, politics, research, media business-oriented consulting, ‘in house’ brand communications.

Location
Melbourne Burwood Campus
Jakarta Campus

Duration
8 or 12 months

Academic entry requirement
Year 12 or equivalent

English entry requirement
IELTS 6.0 (with no band score below 5.5)

2019 Tuition Fees*
\$26,720

Intakes
March, June and October

Course structure
Complete and pass 8 units:
2 core units

- ACC100 Communication in Everyday Life
- ACG103 Design Skills

Plus 3 streams (6 units in total)
Advertising stream

- ALA101 Advertising Principles and Practices
- ALA102 Creative Brand Communication

Public Relations stream

- ALR103 Introduction to Public Relations
- ALR104 Strategic Communication and Writing

Journalism stream

- ALJ111 News Reporting 1
- ALJ112 News Reporting 2

Digital Media stream

- ALM101 Making Social Media
- ALM102 Making Video

*Fees are correct as at April 2019.

- Burwood (Melbourne) **B**
- Waterfront (Geelong) **WF**
- Waurrn Ponds (Geelong) **WP**
- Warrnambool **WB**
- Cloud **C**

Second year entry to Deakin University*

	Trimester intake	WAM required for transfer				Maximum credits
		Burwood (Melbourne)	Waterfront (Geelong)	Waurrn Ponds (Geelong)	Warrnambool	
Bachelor of Arts* B WP Major sequences: Advertising B Journalism B WP Public Relations B WP	T1 T2 T3	50		50		8
Bachelor of Communication (Advertising) B	T1 T2	50				8
Bachelor of Communication (Digital Media) B WP	T1 T2 T3++	50		50		8
Bachelor of Communication (Journalism) B WP	T1 T2 T3++	50		50		8
Bachelor of Communication (Public Relations) B WP	T1 T2 T3++	50		50		8

T1 Trimester 1 entry T2 Trimester 2 entry T3 Trimester 3 entry
* See page 11 for Diploma to Degree transfer criteria.
+ Choice of additional units is based on the Deakin University degree you wish to enter. Full details are listed on the Deakin College website.
++ Offered Burwood (Melbourne) only.
≠ Choice of majors limited and not available on all campuses.

For up-to-date course information, core units and additional information, visit:
deakincollege.edu.au/programs/diploma-communication





Burwood (Melbourne) **B**
 Waterfront (Geelong) **WF**
 Warrnambool (Geelong) **WP**
 Warrnambool **WB**
 Cloud **C**

Diploma of Construction Management

Build a career spanning domestic or commercial projects, from construction management to surveying with this pathway to Deakin University's Bachelor of Construction Management (Honours).

Employment and career options upon completing your Bachelor degree
 Construction manager, estimator, project manager, quantity surveyor in a range of industry organisations such as contractors, property developers and consulting firms, consultant in the property and facilities divisions of companies that are responsible for large property portfolios.

Location
 Geelong Waterfront Campus

Duration
 8 or 12 months

Academic entry requirement
 Year 12 or equivalent

English entry requirement
 IELTS 5.5 (with no band score below 5.5)

2019 Tuition Fees*
 \$28,600

Intakes
 March, June and October

Course structure
 Complete and pass 10 units:
10 core units

- SRA010 Safety Induction Program (0 credit point)
- SRE170 Construction Finance
- SRE270 Building Economics
- SRM165 Introduction to Building Information Modelling
- SRT141 Building Safety
- SRT151 Construction and Structures 1
- SRT153 Building Materials Science
- SRT159 Construction Projects 1
- SRT259 Construction Projects 2
- STP050 Academic Integrity (0 credit point)

Second year entry to Deakin University*

	Trimester intake	WAM required for transfer				Maximum credits
		Burwood (Melbourne)	Waterfront (Geelong)	Warrnambool		
Bachelor of Construction Management (Honours) WF	T1 T2		50			8

T1 Trimester 1 entry T2 Trimester 2 entry T3 Trimester 3 entry
 * See page 11 for Diploma to Degree transfer criteria.

For up-to-date course information, core units and additional information, visit: deakincollege.edu.au/programs/diploma-construction





Burwood (Melbourne) **B**
 Waterfront (Geelong) **WF**
 Warrnambool (Geelong) **WP**
 Warrnambool **WB**
 Cloud **C**

Diploma of Design

Learn the tools, strategies and design thinking methodologies required to be an adaptable, multidisciplinary designer. The Diploma of Design builds the foundation for further study in visual communication, animation and digital technologies.

Employment and career options upon completing your Bachelor degree

Work in advertising, graphic design studios, print houses, publishers, corporate companies who host in-house design services, government and private practices, motion design, animation, film and television, web design, motion capture performance, augmented and virtual reality, UX design, web design, digital design and immersive design.

Location

Melbourne Burwood Campus

Duration

8 or 12 months

Academic entry requirement

Year 12 or equivalent

English entry requirement

IELTS 5.5 (with no band score below 5.5)

2019 Tuition Fees*

\$27,400

Intakes

March, June and October

Course structure

Complete and pass 8 units:

4–6 core units

- ACF107 Principles of Animation^
- ACI102 Digital Photography^
- ADD101 Design Thinking
- ADD102 Design Skills and Technologies 1
- ADD103 Design Skills and Technologies 2
- ADD104 Design Laboratory

Plus 4 additional units*

- ACC100 Communication in Everyday Life
- ACF103 Writing with the Camera

- ACF106 Screen Practices
- ACI101 Analogue Photography
- ALA101 Advertising Principles and Practices
- ALA102 Creative Brand Communication
- ACF104 Screen History
- ALJ111 News Reporting 1
- ALJ112 News Reporting 2
- ALM101 Making Social Media
- ALM102 Making Video
- ALR103 Introduction to Public Relations
- ALR104 Strategic Communication and Writing

^Core units for 3D Animation and Visual Communication majors, elective units for Digital Technologies major
 *Fees are correct as at April 2019.

Second year entry to Deakin University*

	Trimester intake	WAM required for transfer				Maximum credits
		Burwood (Melbourne)	Waterfront (Geelong)	Warrnambool (Geelong)	Warrnambool	
Bachelor of Design (3D Animation) B	T1 T2 T3	50				8
Bachelor of Design (Digital Technologies) B	T1 T2	50				8
Bachelor of Design (Visual Communication) B WF	T1 T2 T3**	50	50			8

T1 Trimester 1 entry T2 Trimester 2 entry T3 Trimester 3 entry
 * See page 11 for Diploma to Degree transfer criteria.
 + Choice of additional units is based on the Deakin University degree you wish to enter. Full details are listed on the Deakin College website.
 ++ Offered at Burwood (Melbourne) only.

For up-to-date course information, core units and additional information, visit: deakincollege.edu.au/programs/diploma-design



Diploma of Engineering

The Diploma of Engineering is a broad course that will give you the skills and knowledge required for a full spectrum of opportunities in the field of engineering. You can choose to specialise in civil, electrical and electronics, mechanical or mechatronics engineering when you enter second year at Deakin University.

Employment and career options upon completing your Bachelor degree

Pursue an engineering career in disciplines like Aerospace, aircraft control and navigation, automotive industry, construction, design and manufacturing, electronic control systems, factory control, government engineering, roads and railroads, shipbuilding, robotics, water supply.

All Diploma of Engineering students must complete SEJ010 Introduction to Safety and Project Oriented Learning and STP050 Academic Integrity, which are 50-minute integrity and safety training units. Both STP050 and SEJ010 are 0 credit point compulsory units and do not count toward your total credit requirements.
^ For students intending to articulate into either the Bachelor of Civil Engineering (Honours) or Bachelor of Mechanical Engineering (Honours).
~For students intending to articulate into either the Bachelor of Electrical and Electronics Engineering (Honours) or Bachelor of Mechatronics Engineering (Honours).
*Fees are correct as at April 2019.

Location

Geelong Warrnambool Campus

Duration

8 or 12 months

Academic entry requirement

Year 12 or equivalent

English entry requirement

IELTS 5.5 (with no band score below 5.5)

Prerequisite

Year 12 Mathematics or equivalent

2019 Tuition Fees*

\$31,320

Intakes

March, June and October

Course structure

Complete and pass 6 units (8 credit points):

- SEB101 Engineering Fundamentals (1 credit point)
- SEJ101 Design Fundamentals (2 credit points)
- SIT172 Programming for Engineers (1 credit point)
- SIT194 Introduction to Mathematical Modelling (1 credit point)
- SIT199 Applied Algebra and Statistics (1 credit point)
- One of SEJ102 Electrical Systems Engineering Project (2 credit points)~ or SEJ103 Materials Engineering Project (2 credit points)^

Second year entry to Deakin University*

	Trimester intake	WAM required for transfer				Maximum credits
		Burwood (Melbourne)	Waterfront (Geelong)	Warrnambool	Warrnambool	
Bachelor of Civil Engineering (Honours) WP	T1 T2			50		8
Bachelor of Electrical and Electronics Engineering (Honours) WP	T1 T2			50		8
Bachelor of Mechanical Engineering (Honours) WP	T1 T2			50		8
Bachelor of Mechatronics Engineering (Honours) WP	T1 T2			50		8

Note: The undergraduate Engineering courses are four year degrees. On completion of the Deakin College Diploma you will be required to study an additional 3 years of full-time study.
T1 Trimester 1 entry T2 Trimester 2 entry T3 Trimester 3 entry
* See page 11 for Diploma to Degree transfer criteria.

Deakin CADET building

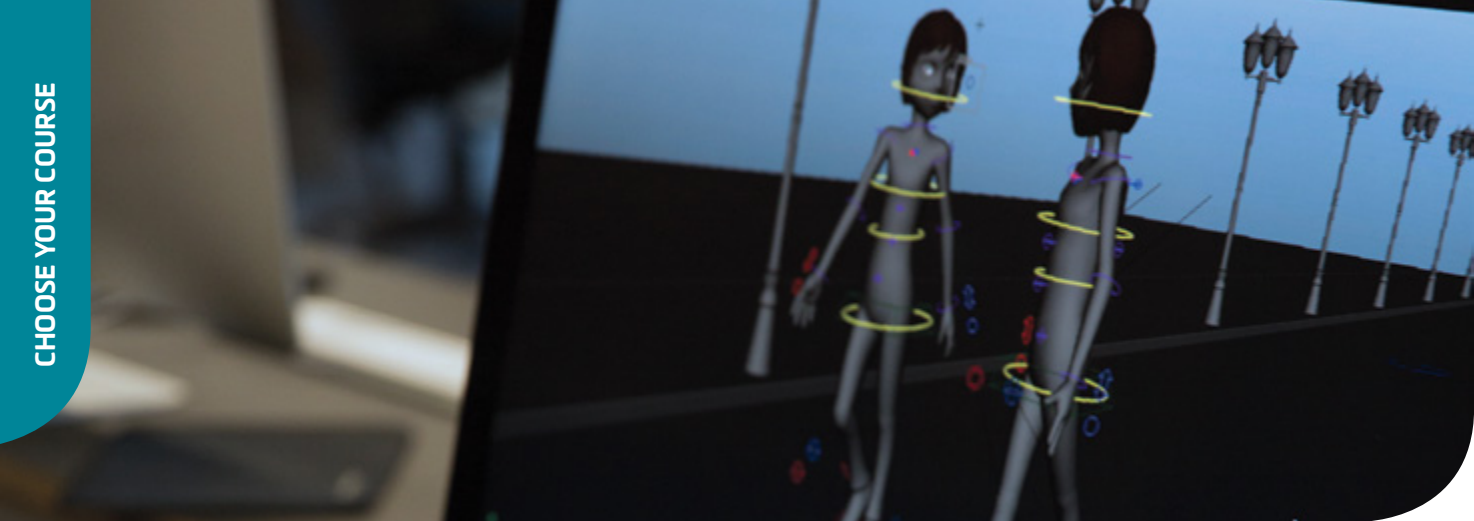
Deakin University's Centre for Advanced Design in Engineering Training (CADET) changes the way students learn and train to become engineers of the future. Direct collaboration with industry, an emphasis on shifting the learning model to a design based approach and using the latest equipment and facilities all come together for a 21st century engineering education.



For up-to-date course information, core units and additional information, visit: deakincollege.edu.au/programs/diploma-engineering



Warrnambool Lab



Burwood (Melbourne) **B**
 Waterfront (Geelong) **WF**
 Warrnambool **WB**
 Cloud **C**

Diploma of Film, Television and Animation

The Diploma of Film, Television and Animation is a unique course that provides a direct pathway into the Deakin University Bachelor of Film, Television and Animation. Gain a hands-on education using state of the art technology within an inspiring creative arts environment.

Employment and career options upon completing your Bachelor degree

Pursue a creative career such as an animator film director, producer, script writer, film editor, post-production or film crew member.

Location

Melbourne Burwood Campus

Duration

8 or 12 months

Academic entry requirement

Year 12 or equivalent

English entry requirement

IELTS 5.5 (with no band score below 5.5)

2019 Tuition Fees*

\$28,520

Intakes

March, June and October

Course structure

Complete and pass 8 units:

6 core units

- ACF103 Writing with the Camera
- ACF106 Screen Practices
- ACF107 Principles of Animation
- ACG103 Design Skills
- ACI101 Analogue Photography
- ACF104 Screen History

Plus 2 electives

- ACC100 Communication in Everyday Life
- ACI102 Digital Photography
- ADD101 Design Thinking

- ADD103 Design Skills and Technologies 2
- ADD104 Design Laboratory
- ALA101 Advertising Principles and Practices
- ALA102 Creative Brand Communication
- ALJ111 News Reporting 1
- ALJ112 News Reporting 2
- ALM101 Making Social Media
- ALM102 Making Video
- ALR103 Introduction to Public Relations
- ALR104 Strategic Communication and Writing

Second year entry to Deakin University*

	Trimester intake	WAM required for transfer				Maximum credits
		Burwood (Melbourne)	Waterfront (Geelong)	Warrnambool		
Bachelor of Arts B WP	T1 T2 T3	50		50		8
Major sequences: Film, Television and Animation B Photography B WF						
Bachelor of Film, Television and Animation B	T1 T2 T3	50				8

T1 Trimester 1 entry T2 Trimester 2 entry T3 Trimester 3 entry
 * See page 11 for Diploma to Degree transfer criteria.



For up-to-date course information, core units and additional information, visit:
deakincollege.edu.au/programs/diploma-film



*Fees are correct as at April 2019.



Burwood (Melbourne) **B**
 Waterfront (Geelong) **WF**
 Warrnambool **WB**
 Cloud **C**

Diploma of Health Sciences

This course provides a sound knowledge and understanding of the health of individuals, communities and populations. It will allow you to enter a wide variety of undergraduate courses at Deakin University in areas such as health sciences, psychology, exercise and sport science, food and nutrition and public health and health promotion.

Employment and career options upon completing your Bachelor degree

Explore roles such as Case manager, case worker, community health officer, counsellor, development manager, disability officer, exercise scientist, fitness advisor, food product developer, food quality assurance manager, health educator, health promotion officer, market researcher, nutritionist, project officer, sports coach, vocational guidance worker.

Location

Melbourne Burwood Campus
 Geelong Warrnambool Campus

Duration

8 or 12 months

Academic entry requirement

Year 12 or equivalent

English entry requirement

IELTS 5.5 (with no band score below 5.5)

2019 Tuition Fees*

\$30,200

Intakes

March, June and October

Course structure

Complete and pass 8 units*

- HBS107 Understanding Health
- HBS108 Health Information and Data
- HBS109 Human Structure and Function
- HBS110 Health Behaviour
- HPS111 Psychology A: Fundamentals of Human Behaviour
- HPS121 Psychology B: Individual and Social Development
- HSE102 Functional Human Anatomy
- HSE104 Research Methods and Statistics in Exercise and Sport
- HSE111 Physical Activity and Exercise for Health
- HSE113 Human Growth, Development and Aging for Exercise Scientists
- HSH111 Introduction to Public Health and Health Promotion
- HSH112 Local and Global Environments for Health
- HSN101 Foundations of Food, Nutrition and Health
- HSN105 Healthy and Sustainable Food Systems
- HSN107 Physiology of Human Growth and Development
- SLE111 Cells and Genes
- SLE115 Essential Skills in Bioscience
- SLE123 Physics for the Life Sciences
- SLE132 Biology Form and Function
- SLE133 Chemistry in Our World
- SLE155 Chemistry for the Professional Sciences

Second year entry to Deakin University*

	Trimester intake	WAM required for transfer				Maximum credits
		Burwood (Melbourne)	Waterfront (Geelong)	Warrnambool (Geelong)	Cloud	
Bachelor of Exercise and Sports Science* B WP	T1 T2	50		50		8 [#]
Major sequences: Applied Sport Science B WP Disability and Inclusion B Exercise Physiology B WP Family, Society and Health B Health Promotion B WP Nutrition B WP Physical Activity and Health B WP Psychology B WP Sports Coaching B WP Sports Nutrition B WP Strength and Conditioning B WP						
Bachelor of Health Sciences * B WP	T1 T2 T3 ⁺⁺	50		50		8 [#]
Major sequences: Disability and Inclusion B Environmental Health B WP Exercise Science B WP Family, Society and Health B Food Studies B Health and Sustainability B Health Promotion B WP Medical Biotechnology B WP Nutrition B WP Physical Activity and Health B WP Psychology for Professional Development [§] B WP Psychological Science B WP						
Bachelor of Nutrition Science B	T1 T2	50				8 [#]
Major sequences: Disability and Inclusion B Family, Society and Health B Food Innovation B Exercise Science B Health Promotion B Physical Activity and Health B Psychology B						
Bachelor of Psychological Science* B WP	T1 T2+++	50		50	50	8
Bachelor of Public Health and Health Promotion B	T2	50				8 [#]
Bachelor of Sport Development B	T1	50				4 [#]
Bachelor of Biomedical Science B WP	T1 T2	50		50		8 [#]
Major sequences: Environmental Health B WP Infection and Immunity B WP Medical Biotechnology B WP Medical Genomics B WP Molecular Life Sciences B WP Pharmaceutical Science B WP						

T1 Trimester 1 entry T2 Trimester 2 entry T3 Trimester 3 entry

* See page 11 for Diploma to Degree transfer criteria.

+ Choice of additional units is based on the Deakin University degree you wish to enter.

Full details are listed on the Deakin College website.

≠ Choice of majors limited and not available on all campuses.

These degrees require you to take additional first year degree units when you transfer to Deakin University. The degree may therefore take longer to complete.

§ Individual units may not be available on every campus.

++ Offered at Burwood (Melbourne) only.

+++ Offered at Burwood (Melbourne) and Cloud (online) only.



For up-to-date course information, core units and additional information, visit: deakincollege.edu.au/programs/diploma-health-sciences

*Fees are correct as at April 2019.



Diploma of Information Technology

The Diploma of Information Technology provides a broad introduction to computing. Afterwards you can progress to a more specialised area during your degree such as computer science, cyber security, application development, cloud computing, creative technologies, game development and virtual and augmented reality.

Employment and career options upon completing your Bachelor degree

Discover opportunities in Cryptography, data communications, database and information systems design and management, games development, iOS development, mobile application programming, multimedia design, network management, procedural programming, project management, security analysis, security systems development, software development, systems analysis, web programming.

Location
Melbourne Burwood Campus
Jakarta Campus

Duration
8 or 12 months

Academic entry requirement
Year 12 or equivalent

English entry requirement
IELTS 5.5 (with no band score below 5.5)

2019 Tuition Fees*
\$27,880

Intakes
March, June and October

Course structure
Complete and pass 8 units:
2 core units

- SIT102 Introduction to Programming
- SIT103 Data and Information Management

Plus an additional 6 units

- SIT105 Thinking Technology and Design
- SIT111 Algorithms and Computing Systems
- SIT112 Data Science Concepts

- SIT113 Cloud Computing and Virtualisation
- SIT120 Introduction to Responsive Web Apps
- SIT123 Data Capture Technologies
- SIT124 Exploring I.T.
- SIT151 Game Fundamentals
- SIT162 Introduction to Creative Technologies
- SIT182 Real World Practices for Cyber Security
- SIT190 Introductory Mathematical Methods
- SIT192 Discrete Mathematics

*Fees are correct as at April 2019.

Second year entry to Deakin University*

	Trimester intake	WAM required for transfer				Maximum credits
		Burwood (Melbourne)	Waterfront (Geelong)	Warrnambool	Warrnambool	
Bachelor of Information Technology* B WP	T1 T2	50		50		8
Major sequences: Application Development B Cloud Computing B WP Creative Technologies B Cyber Security B WP Game Development B Virtual and Augmented Reality B						
Bachelor of Computer Science B	T1 T2	50				8
Bachelor of Cyber Security B WP	T1 T2	50		50		8

T1 Trimester 1 entry T2 Trimester 2 entry T3 Trimester 3 entry
* See page 11 for Diploma to Degree transfer criteria.
≠ Choice of majors limited and not available on all campuses.

For up-to-date course information, core units and additional information, visit: deakincollege.edu.au/programs/diploma-IT



Diploma of Science

The Diploma of Science leads to Deakin University's Bachelor degrees in science, biomedical science, environmental science, forensic science or zoology and animal science. Graduates may work in a wide range of cutting-edge and rapidly growing fields and could be involved in the scientific developments that hold the key to the future.

Employment and career options upon completing your Bachelor degree

Work in Biomedical science, environment and natural resources, forensics, genetic engineering, insurance investigation, laboratory technology, management, marketing, medical research, pest management officers, occupational health and safety, pharmaceutical production or sales, research science, risk analysis, quality assurance, education, quarantine officers.

Location

Geelong Warrn Ponds Campus

Duration

8 or 12 months

Academic entry requirement

Year 12 or equivalent

English entry requirement

IELTS 5.5 (with no band score below 5.5)

Prerequisite

Year 12 Mathematics or equivalent

2019 Tuition Fees*

\$31,440

Intakes

March, June and October

Course structure

Complete and pass 8 units*:

- HBS107 Understanding Health
- HBS109 Human Structure and Function
- HSN101 Foundations of Food Nutrition and Health
- SIT191 Introduction to Statistics and Data Analysis

- SIT194 Introduction to Mathematical Modelling
- SLE102 Physical Geography
- SLE103 Ecology and the Environment
- SLE111 Cells and Genes
- SLE112 Fundamentals of Forensic Science
- SLE115 Essential Skills in Bioscience
- SLE121 Environmental Sustainability
- SLE123 Physics for the Life Sciences
- SLE132 Biology: Form and Function
- SLE133 Chemistry in Our World
- SLE155 Chemistry for the Professional Sciences

+ The units you choose will depend on the degree program that you intend to study at Deakin University.

All Diploma of Science students must complete a Laboratory and Fieldwork Safety Induction Program (SLE010), which is a 50-minute safety training program. This does not count toward your total units.

For SLE102, SLE111, SLE132, SLE112, SLE123 and SLE133 you must complete SLE010 Laboratory and Fieldwork Safety Induction Program as a co-requisite unit. You must successfully complete SLE133 Chemistry in our World before enrolling in SLE155 Chemistry for the Professional Sciences (pre-requisite). Students are also required to complete STP050 Academic Integrity (0 credit point unit).

*Fees are correct as at April 2019.

Burwood (Melbourne) **B**

Waterfront (Geelong) **WF**

Warrn Ponds (Geelong) **WP**

Warrnambool **WB**

Cloud **C**

Second year entry to Deakin University*

	Trimester intake	WAM required for transfer				Maximum credits
		Burwood (Melbourne)	Waterfront (Geelong)	Warrn Ponds (Geelong)	Warrnambool	
Bachelor of Science* B WP	T1 T2	50		50		8 [#]
Major sequences: Animal Biology B WP Cell Biology B WP Chemistry WP Chemistry and Material Science B Environmental Science B Fisheries and Aquaculture WP Freshwater Biology WP Geography B Genomics B WP Human Biology B WP Mathematical Modelling B WP Natural History B Plant Biology B						
Bachelor of Biomedical Science* B WP	T1 T2	50		50		8
Major sequences: Environmental Health B WP Infection and Immunity B WP Medical Biotechnology B WP Medical Genomics B WP Molecular Life Sciences B Pharmaceutical Science B WP						
Bachelor of Environmental Science (Environmental Management and Sustainability) B	T1 T2	50				8
Bachelor of Environmental Science (Wildlife and Conservation Biology) B	T1 T2 T3	50				8
Bachelor of Forensic Science WP	T1 T2			50		8 [#]
Major sequences: Forensic Biology WP Forensic Chemistry WP						
Bachelor of Zoology and Animal Science WP	T1 T2			50		8 [#]

T1 Trimester 1 entry T2 Trimester 2 entry T3 Trimester 3 entry

* See page 11 for Diploma to Degree transfer criteria.

[#] Choice of majors limited and not available on all campuses.

[#] These degrees require you to take additional first year degree units when you transfer to Deakin University. The degree may therefore take longer to complete.



For up-to-date course information, core units and additional information, visit: deakincollege.edu.au/programs/diploma-science



Masters Qualifying Program

The Masters Qualifying Program (Business and Law) offers a quality pathway to selected Deakin University postgraduate programs in Business and Law. The emphasis is on developing the skills necessary for success at postgraduate level. The MQP is taught by Deakin College and Deakin University's English Language Institute (DUELI).

Entry requirements

- Academic requirements: Completion of a three-year post-secondary study qualification (equivalent to post-Year 12).
- India/Pakistan—three year qualification post Standard/Class XII
- China—three year qualification post Senior High School Certificate
- Sri Lanka—three year qualification post A levels.

For specific academic standard requirements, and requirements for countries not listed, please refer to:

deakin.edu.au/future-students/international/apply-entry.php

- English requirements: An overall band score of six or above in the International English Language Testing System (IELTS) test (Academic module) with no individual band score less than 6; or equivalent. A full list of the University's undergraduate English language requirements is available at:

deakin.edu.au/international-students/getting-into-deakin/entry-requirements/english-language-requirements

Course structure

To complete the Masters Qualifying Program (MQP), students must complete:

- Two discipline-based units (with a minimum weighted average mark of 60%)
- Two skilled-based units (with an achieved pass grade)

Each unit includes four hours of teaching per week: a two hour lecture followed by a two hour tutorial.

Transferring to Deakin University

To be eligible for entry into a Deakin postgraduate program, you must successfully complete all four MQP units and achieve the required grades. Programs have varying transfer requirements. Please refer to page 42.

MQP academic calendar

MQP start	MQP end
28 October 2019	7 February 2020
2 March 2020	5 June 2020
29 June 2020	2 October 2020

Who should apply?

The MQP is a non-award program designed for international students whose academic qualifications and/or English proficiency levels are marginally below the entry requirements for coursework masters programs.

Location

Melbourne Burwood Campus

Duration

Four months

2019 Tuition Fees*

\$13,700

Intakes

March, June and October

Course structure

Complete 4 units:

2 core units^

- XDP701 Academic and Intercultural Communication for Postgraduate Study
- XPD702 Academic Writing and Research Skills Development for Postgraduate Study

^ Units delivered by DUELI.

Plus 2 discipline-based units*

- MAAP103 Accounting for Decision Making
- MAEP101 Economic Principles
- MAFP101 Fundamentals of Finance
- MISP171 Business Analytics
- MMMP132 Management

* Units delivered by Deakin College.

Entry to Deakin University

	Trimester intake	Duration
Graduate Diploma of Business Administration [~] B	T1 T2	1 year
Graduate Diploma of Business Analytics [~] B	T1 T2 T3	1 year
Graduate Diploma of Commerce [~] B	T1 T2 T3	1 year
Graduate Diploma of International Finance [#] B	T1 T2	1 year
Graduate Diploma of Information Systems [~] B	T1	1 year
Graduate Diploma of Marketing [~] B	T1 T2 T3	1 year
Graduate Diploma of Professional Accounting [@] B	T1 T2 T3	1 year
Graduate Diploma of Accounting and Law [†] B	T1 T2 T3	1 year
Master of Business Administration [^] B	T1 T2	1.5 years
Master of Professional Accounting [@] B	T1 T2	1.5 years
Master of Business Administration (Healthcare Management) [^] B	T1 T2 T3	2 years
Master of Business Administration (International) [#] B	T1 T2 T3	2 years
Master of Business Analytics [@] B	T1 T2 T3	2 years
Master of Business (Sport Management) [@] B	T1 T2	2 years
Master of Commerce [@] B	T1 T2 T3	2 years
Master of International Accounting [~] B	T1 T3	2 years
Master of International Finance ^x B	T1 T2	2 years
Master of Information Systems [@] B	T1 T2 T3	2 years
Master of Marketing [@] B	T1 T2 T3	2 years
Master of Accounting and International Finance [~] B	T1 T2 T3	2 years
Master of Professional Accounting and Law [@] B	T1 T2	2 years

T1 Trimester 1 entry T2 Trimester 2 entry T3 Trimester 3 entry

For full postgraduate course details, please visit deakin.edu.au/future-students/courses.

% Successful completion of a MQP and three years relevant work experience.

~ M622, M616, M661, M628: Successful completion of MQP* with a minimum weighted average mark of 60% for each discipline-based unit and a pass grade in the two communication and academic skills instruction units.

M630: Successful completion of the MQP.

@ M720, M696, M749: Successful completion of MQP* (or MQP Extended) (with a minimum overall average of 60 in the discipline units), PLUS two years relevant work experience.

† M649: Successful completion of MQP and two years relevant work experience.

~ Successful completion of MQP* (or MQP Extended) (with a minimum overall average of 60 in the discipline units and a pass grade in the communication and academic skills instruction unit).

@ M722, M748, M755, M761, M788: Successful completion of MQP* with a minimum weighted average mark of 60% for each discipline-based unit and a pass grade in the two communication and academic skills instruction units.

~ M701, M703: Successful completion of a MQP* and three years relevant work experience.

x Successful completion of the MQP* (or MQP Extended).

*Fees are correct as at April 2019.

Academic entry requirements

Foundation

To enter the Foundation, you generally need to have completed the equivalent of Australian high school Year 11.

Diploma

To enter a diploma course, you generally need to have completed the equivalent of Australian high school Year 12. Entry to the Diploma of Engineering also requires the completion of Australian Year 12 Mathematics (or equivalent) as a prerequisite.

Masters Qualifying Program (Business and Law)

Entry requirements are listed on page 41. Specific academic entry requirements are listed below. Students with qualifications that are not listed should send their application and academic results to Deakin College for assessment.



Country	Foundation	Diploma
Australia	Successful completion of Year 11 or equivalent	VCE ATAR score of 40 or above VCAL Senior completion; IB Diploma score of 22 or above
Bangladesh	Year 11 (10 + 1) with a 70% GPA	Completion of Higher Secondary Certificate with GPA of 3.5
Brunei	Successful completion of Form 5 (GCE O-levels: passes in 3 subjects with minimum E grade); or equivalent	2 passes in GCE A-levels
Cambodia	Successful completion of year 11 with a C grade average	Diploma of Upper Secondary Education with a C grade average
China	Extended Foundation Program: Successful completion of Senior Middle 2 (Gao Er) with 55%: Standard Foundation Program: Successful completion of Senior Middle 2 (Gao Er) with 60% or Vocational Technical Program with 60%	Successful completion of Senior Middle 3 (Gao San) with 60% or Vocational Academic Program with 60%
Fiji	Successful completion of Form 6 School Leaving Certificate with an overall score of 260	Successful completion of Form 7 with a B in English and Maths and a pass in all other subjects, with an overall score of 240
France	Completion of the French Baccalaureate	Baccalaureate with an average of 10
Ghana	Successful completion of O-levels: passes in 3 subjects with a minimum E grade	2 passes in GCE A-levels
Hong Kong	Completion of Form 5 with passes in 4 academic subjects	HKDSE with 8 points across 4 subjects
India	Partial completion of the All India Senior School Certificate at an approved level determined by Deakin College 10 + 1 with 50% average	Completion of the All India Senior School Certificate or State Board with an overall 58% aggregate
Indonesia	SMA II with an average of 7.0 in 4 academic subjects	SMA III with an average of 6.5 in 4 academic subjects
Japan	Successful completion of Kotogakko Year 2 with a B grade average	Successful completion of Kotogakko Year 3 a B grade average or a GPA of 3
Kenya	Completion of KCSE with a D grade average; or GCE O-levels: passes in 3 subjects with a minimum E grade	Completion of KCSE with a C grade average; or 2 passes in GCE A-levels
Korea	Senior High School Leaving Certificate Year 2 with a D grade average in 4 academic subjects	High school Diploma with a D grade average
Kuwait	Completion of Shahadat Al-Thanawaya Al-Aama (General Secondary Education Certificate) with minimum overall grade of 60%	Completion of Shahadat Al-Thanawaya Al-Aama (General Secondary Education Certificate) with a 70% average in final results

Country	Foundation	Diploma
Macau	Completion of Senior Middle 2 with an average of 80% in 4 subjects	Successful completion of Senior Middle 3 with a B or 75% average in 4 academic subjects
Malawi	Successful completion of O-levels: passes in 3 subjects with a minimum E grade	2 passes in GCE A-levels
Malaysia	Successful completion of Form 5 (SPM); or successful completion of Senior Middle 2 or equivalent	2 passes (minimum E grade) in STPM; or Malaysia Independent Chinese Secondary Schools Unified Examination Certificate with a pass in 4 academic subjects
Myanmar	Completion of Basic Education High School Exam with overall pass	Completion of Basic Education High School Exam with grade of 50% in final year
Nepal	Completion of Higher Secondary School Leaving Certificate (Year 11) with a GPA of 2.0	Completion of Higher Secondary School Leaving Certificate (Year 12) with a GPA of 2.4
Oman	General Secondary Education Certificate/Thanawiya Amma	Additional year of study following General Secondary Education Certificate or Year 12 American program
Pakistan	Completion of Higher Secondary School Certificate (Year 11) with a grade average of 50%	Completion of Higher Secondary School Certificate (Year 12) with a grade average of 55%
Papua New Guinea	Higher School Certificate with a grade average of 60%	Higher School Certificate with a grade average of 70%
Philippines	Successful completion of Year 11 with an 80% average in relevant subjects	Successful completion of Year 12 with an 80% average
Saudi Arabia	General Secondary Education Certificate/Thanawiya Amma	Additional year of study following General Secondary Education Certificate or Year 12 American program
Singapore	Successful completion of Form 5; or Sec 4 (Express); or GCE O-levels: passes in 3 subjects with a minimum E grade; or GCE N levels with aggregate points of no more than 14 (based on best 3 academic subjects) and no more than 3 in English Syllabus A; or Successful completion of National ITE Certificate (Nitec) with a GPA of between 1 and 2; or Higher National ITE Certificate (Higher Nitec) with a GPA of less than 1	2 H2 passes in GCE A-levels
South Africa	Successful completion of Year 11	Successful completion of Year 12
Sri Lanka	Successful completion of Year 11 (GCE O-levels: passes in 3 subjects with a minimum E grade); or equivalent	2 passes in GCE A-levels or equivalent; or 2 passes in Sri Lanka A-levels (General English is not counted)
Sweden	Contact the Deakin College Admissions team	Avgangsbetyg with a grade average of 2.5 and a 4 in English
Taiwan	Successful completion of Senior Middle 2 with an average of 60% in 4 academic subjects	Successful completion of Senior Middle 3 with a B or 60% average in 4 academic subjects
Tanzania	Successful completion of O-levels: passes in 3 subjects with a minimum E grade	2 passes in GCE A-levels
Thailand	Successful completion of Matayom 5 with a GPA of 2.5	Successful completion of Matayom 6 with a GPA of 2.0
Turkey	Contact the Deakin College Admissions team	Successful completion of Lise Diplomasi with a GPA of 3.0
Uganda	Successful completion of O-levels: passes in 3 subjects with a minimum E grade	2 passes in GCE A-levels
United States	Successful completion of Grade 11 or equivalent	Successful completion of Grade 12 or equivalent with an SAT score of 1000
Vietnam	Successful completion of Year 11 with a 6.0 GPA	Successful completion of Year 12 with a 6.0 GPA
Zambia	Successful completion of O-levels: passes in 3 subjects with a minimum E grade	2 passes in GCE A-levels
Zimbabwe	Successful completion of O-levels: passes in 3 subjects with a minimum E grade	2 passes in GCE A-levels

English language

If you do not meet the English language requirements for your chosen course, you may be eligible to enter an intensive English language course at Deakin University English Language Institute (DUELI) to improve your English skills.

English language courses

Deakin College can arrange full-time English tuition at the Deakin University English Language Institute (DUELI) if you need to improve your English skills before beginning your Deakin College course. DUELI offers a wide range of English language courses, from beginner to advanced levels. Depending on your English language needs, your course will run for 5 to 45 weeks. DUELI is only available for students studying in Australia and is located at Deakin University's Melbourne Burwood Campus and Geelong Waterfront Campus. For more information about DUELI, including dates and course fees, visit: deakin.edu.au/international-students/dueli



English language requirements

The language of instruction at Deakin College is English. International applicants and Australian citizens with international qualifications must demonstrate a suitable level of English language proficiency before being admitted into a program. The below table provides a list of acceptable English language proficiency tests and required scores for entry to Deakin College courses.

English test/level	Foundation Program (Standard) and Diploma courses (excluding the Diploma of Communication)	Diploma of Communication
Cambridge English	B2 First (FCE)	C1 Advanced (CAE)
Deakin University English Language Institute (DUELI)	EAP 2	EAP 3
GCE O-level	C6	B4
HK 5	Foundation Program: 60% in Form 5 English Language Diploma: HKDSE Level 3	HKDSE Level 4 or higher
IELTS	Foundation Program Standard: 5.5 (with no band score below 5) Foundation Program Extended: 5.0 (with no band below 4.5) Diploma: 5.5 (with no band score below 5.5)	6.0 (with no band score below 5.5)
International Baccalaureate Diploma	Grade 4 in English	Grade 5 in English
Pearson Test of English (PTE): Academic	42–49	50–57
SPM English	C4	B4
TOEFL Computer Based	196	213
TOEFL Paper Based	525	550
TOEFL iBT	Foundation Program (Standard): 52 – Writing 15, Speaking 14, Listening and Reading 5 Diploma: 52 – Writing 19, Speaking 16, Listening and Reading 5	65 – Writing 19, Speaking 16, Listening and Reading 10
VCE English (Australia)	Units 3 and 4: a study score of at least 20 in any English	Units 3 and 4: a study score of at least 25 in any English

**Information regarding your orientation and the days and times allocated for your enrolment will be outlined in your offer pack.

Key Terms

Other charges (if applicable)

Overseas Student Health Cover (OSHC) fee: this is calculated based on duration of your student visa and is indicated on your Deakin College letter of offer.

Pathway

A Foundation Program or Diploma offered by Deakin College that prepares students for entry into Deakin University courses.

Trimester

At Deakin College there are three trimesters; Trimester 1 runs from March to June; Trimester 2 runs from June to October; Trimester 3 runs from October to February.

Transfer to Deakin

There are specific academic guidelines that students must meet in order to transfer to Deakin University. Information sessions on transferring to Deakin University are held at Deakin College each trimester. Dates, times and venues are posted on the Student Portal.

Tuition fees

Course fees include:

- study support workshops
- an orientation and enrolment program
- access to library, computing, sporting and social activities
- student counselling and academic assistance as required.

Course fees do not include:

- accommodation
- meals and transport
- entertainment
- textbooks, stationery and printing
- airfares.

Other charges (if applicable)

Deakin University Student Association (DUSA) fee (see page 13): AUD\$30

Weighted Average Mark (WAM)

This is a calculation of all your relevant unit outcomes within a course. The WAM is weighted by taking into consideration the credit points of a unit and the result.

To calculate the WAM for your diploma course, you will need the achievable credit points for your passed, failed and withdrawn units and the mark for each of those units.



Academic calendar

Year/Intake	Orientation*	Teaching Starts	Break	Exams Start	Exams End
2019					
October	21–25 Oct	28 Oct	23 Dec–3 Jan 2020	3 Feb 2020	7 Feb 2020
2020					
March	24–28 Feb	2 Mar	10–16 Mar	1 June	5 June
June	22–26 June	29 June	10–14 Aug	28 Sept	2 Oct
October	19–23 Oct	26 Oct	23 Dec–5 Jan 2021	1 Feb 2021	5 Feb 2021
2021					
March	22–26 Feb	1 Mar	31 Mar–6 Apr	31 May	4 June
June	21–25 June	28 June	16–20 Aug	27 Sept	1 Oct
October	18–22 Oct	25 Oct	22 Dec–4 Jan	31 Jan	4 Feb

*Information regarding your orientation and the days and times allocated for your enrolment will be outlined in your offer pack.

How to apply to Deakin College

Students can apply through a Deakin College Study Agent or directly via online application form.

International students who are applying to Deakin College from overseas

Apply via an education agent

Deakin College appoints education agents around the world who can help you with your application to our courses as well as offer assistance for your student visa. For information on authorised education agents, visit:

deakincollege.edu.au/representatives

International students currently in Year 12 or studying International Baccalaureate in Australia

Apply through VTAC

If you are an international student currently in Year 12 in Australia, and you are about to complete your VCE or International Baccalaureate, you should apply for Deakin College through VTAC (the Victorian Tertiary Admissions Centre).

It is also best to apply through VTAC if you plan on applying for several courses or more than one institution.

Online applications for VTAC open in August for entry the following year. At Deakin College, we hold several information sessions throughout the application period, including during the change-of-preference period. To stay updated on these information sessions, visit:

deakincollege.edu.au/information-sessions

For more information on VTAC:

vtac.edu.au



Apply directly to Deakin College

If you miss the VTAC cut-off date or you want to apply for intakes in Trimester 2 and Trimester 3, you should apply directly to Deakin College. To apply, visit:

deakincollege.edu.au/apply

For more information on the application process for international students, visit:

deakincollege.edu.au/howtoapply-intl

How to accept your offer as an international student

You received your offer to study at Deakin College, and now you are one step closer to an exceptional learning experience. We have put together an easy step-by-step guide on how to accept your offer.

STEP 1: Understand and submit your Letter of Offer

You received a Letter of Offer which contains some key pieces of information about the course you are receiving an offer for including:

- Course name
- The duration of the course
- Commencement dates
- Tuition fees, and conditions of the offer.

STEP 2: Payment of fees

Your offer letter outlines the fees payable before commencing at Deakin College. To secure your place, you will need to pay a portion of your course fees plus the Overseas Student Health Cover Charge, if it applies to you.

Payment is in Australian dollars. Please include your Deakin College Student ID (in the Letter of Offer). To find out more about your payment options, go to:

deakincollege.edu.au/payment-fees

STEP 3: Complete your forms

Next, you will have to complete the Student Acceptance and Payment Agreement form and return it to Deakin College along with your payment.

Once we receive your form, we will provide you with a package that contains:

- Your receipt
- Information regarding the compulsory Orientation and Enrolment program
- Your Confirmation of Enrolment letter (CoE), required to apply for your student visa. If you are under 18, you will also receive information about our Under-18 guardianship program and the required form to apply for your student visa. For more information on accepting your offer, visit:

deakincollege.edu.au/ayo-intl

Student visas

International students studying in Australia are required to hold a valid student visa during their course of study. Student visas are issued based on meeting requirements and generally have certain conditions attached to them. For more information visit:

homeaffairs.gov.au/trav/stud

Application form

International Students

DEAKIN COLLEGE
In association with



Please print in BLOCK LETTERS

Personal details

Title: <input type="checkbox"/> Mr <input type="checkbox"/> Ms <input type="checkbox"/> Mrs <input type="checkbox"/> Miss <input type="checkbox"/> Other	
Family name:	
Given names:	
Preferred name:	
Date of birth: DAY / MONTH / YEAR	Gender: <input type="checkbox"/> Male <input type="checkbox"/> Female
Have you previously studied at Deakin College? <input type="checkbox"/> Yes <input type="checkbox"/> No	
If 'yes', please provide your Student ID number: _____	

Passport and visa details

Country of birth:	Passport number:
Nationality (on passport):	
Passport expiry date: DAY / MONTH / YEAR	
Have you been refused an entry visa to any country? <input type="checkbox"/> Yes <input type="checkbox"/> No	
Have you been issued a protection visa in any country? <input type="checkbox"/> Yes <input type="checkbox"/> No	
If 'yes', please attach evidence. _____	
If you are currently studying in Australia, please complete the following fields.	
Name of institution:	
Visa type:	Visa expiry date: DAY / MONTH / YEAR
Have you ever been expelled or had your course terminated by another institute or university in Australia? <input type="checkbox"/> Yes <input type="checkbox"/> No	
If 'yes', which institute or university? _____	
Will you be bringing your family to Australia while studying at Deakin College? <input type="checkbox"/> Yes <input type="checkbox"/> No	
If 'yes', please state how many family members: _____	

Contact details

Applicant's contact details

Email:	
Address:	
State/Province	
Country:	
Mobile (include country code):	

Agent's contact details

Agent name:	
Agent office code:	
Address:	
Country:	Post/zip code:
Telephone:	Mobile:
Email:	

B Melbourne Burwood Campus
WP Geelong Warrn Ponds Campus

J Jakarta Campus
WF Geelong Waterfront Campus

Previous studies

Secondary education – highest level achieved

Name of qualification (e.g. Year 12, STPM or 'A' Levels):	
Name of school:	
Country/state:	
Completed: <input type="checkbox"/> Yes <input type="checkbox"/> No	Year completed: MONTH / YEAR
Language of instruction:	

Post-secondary/tertiary education: highest level achieved

Name of qualification (e.g. degree, diploma):	
Name of school/institution:	
Country/state:	
Completed: <input type="checkbox"/> Yes <input type="checkbox"/> No	Year completed: MONTH / YEAR
Language of instruction:	
Will you be applying for exemptions (recognition of prior learning)? <input type="checkbox"/> Yes <input type="checkbox"/> No	
If so, provide copies of relevant academic transcripts and a completed Exemption Application form (email dcoll-admissions@deakin.edu.au)	

Deakin College course selection

Please specify when you prefer to begin your studies:

Year: _____ ☐ March ☐ June ☐ October

Pre-university course

☐ Deakin College Foundation Program

Stream:

- | | |
|---|--|
| <input type="checkbox"/> Arts B | <input type="checkbox"/> Health/Nursing B |
| <input type="checkbox"/> Business B | <input type="checkbox"/> Health/Nursing WF |
| <input type="checkbox"/> Business WF | <input type="checkbox"/> Information Technology B |
| <input type="checkbox"/> Engineering WF | <input type="checkbox"/> Science WF |
| <input type="checkbox"/> Foundation Year J | |

University-level (Diploma) course

- | | |
|---|---|
| <input type="checkbox"/> Diploma of Business B | <input type="checkbox"/> Diploma of Engineering WP |
| <input type="checkbox"/> Diploma of Commerce B | <input type="checkbox"/> Diploma of Film, Television and Animation B |
| <input type="checkbox"/> Diploma of Commerce J | <input type="checkbox"/> Diploma of Health Sciences B |
| <input type="checkbox"/> Diploma of Commerce WF | <input type="checkbox"/> Diploma of Health Sciences WP |
| <input type="checkbox"/> Diploma of Communication B | <input type="checkbox"/> Diploma of Information Technology B |
| <input type="checkbox"/> Diploma of Communication J | <input type="checkbox"/> Diploma of Information Technology J |
| <input type="checkbox"/> Diploma of Construction Management WF | <input type="checkbox"/> Diploma of Science WP |
| <input type="checkbox"/> Diploma of Design B | |

Postgraduate-level course

☐ Masters Qualifying Program (Business and Law)

If selecting this option, you must apply direct to Deakin University.

Please download and complete a MQP Application form at deakin.edu.au/course/masters-qualifying-program-international

Deakin University course selection

Deakin University course:
Campus:
Deakin University ID (if applicable):

Request for disability support

Do you have a disability that may affect your studies? <input type="checkbox"/> Yes <input type="checkbox"/> No	
If 'yes' please specify: <input type="checkbox"/> Hearing <input type="checkbox"/> Vision <input type="checkbox"/> Mobility <input type="checkbox"/> Medical <input type="checkbox"/> Learning <input type="checkbox"/> Other (please specify): _____	
Please attach relevant information so that Deakin College and Deakin University can arrange assistance if possible.	

English proficiency

(Please tick and attach documentary evidence where applicable)

☐ English is my first language.

☐ English was the language of instruction during my secondary school studies and gained a satisfactory pass in final-year English.

☐ I have taken an IELTS or TOEFL test (attach results).

☐ I have obtained a satisfactory mark or score in another examination or test acceptable to Deakin College (e.g. completion of at least the first year of a post-secondary/tertiary course at a college or university where the language of instruction was English).

Overseas Student Health Cover (OSHC)
(for students studying on Australian campuses only)

If you already have OSHC, please provide details of your provider.

OSHC provider name:

OSHC membership number:

Expiry date: DAY / MONTH / YEAR

Sponsored students only

Name of sponsoring organisation:

Type of sponsorship (e.g. tuition fees, living expenses):

Other information

How did you first learn about Deakin College? You may tick more than one.

☐ Exhibition/seminar

☐ Newspaper/magazine

☐ Recommended by a friend/relative — if so, is your friend/relative an Deakin College student? ☐ Yes ☐ No

☐ Recommended by an education agent

☐ Internet, Social media or other. Please specify: _____

Application checklist

☐ I have completed all sections of the Application form.

☐ I have read and understood the Conditions of Enrolment (Deakin College’s full Refund policy is available at [deakincollege.edu.au/policies-procedures](#)).

☐ I formally declare that I am a Genuine Temporary Entrant (GTE) and that I have understood and met all requirements (for study in Australia) [homeaffairs.gov.au/trav/stud/more/genuine-temporary-entrant](#)

☐ I undertake to make timely payments of any fees or associated costs for which I am liable. I am aware of the likely cost of my stay in Australia and have necessary financial capacity to meet such costs for the duration of my course.

Check that you have attached:

☐ certified copies of your academic qualifications

☐ evidence of your English language proficiency (if required)

☐ a copy of your passport, visa or birth certificate (if required)

☐ certified translations of any documents not in English

Declaration

I declare the information I have supplied on this form is, to the best of my understanding and belief, complete and correct. I understand that giving false or incomplete information may lead to my application being refused or my enrolment cancelled.I have read and understood the relevant course information in the Deakin College and Deakin University brochure and/or on the Deakin College and Deakin University website and I have sufficient information about Deakin College and Deakin University to enrol. I understand that the pathway may lead to future studies at Deakin University, subject to Deakin University’s entry requirements.

I understand that it is my responsibility to maintain valid Overseas Student Health Cover (OSHC). I also understand that if I am no longer enrolled at Deakin College, my OSHC membership can be transferred.I also agree that Deakin College is able to exchange information with my OSHC provider with respect to meeting my visa requirements and maintaining my OSHC cover.

I understand that if I have applied through an approved Deakin College/Deakin University agent, all correspondence relating to my application will be forwarded to that agent.I understand that Deakin College and Deakin University fees may increase. I accept liability for payment of all fees as explained in the Deakin College and Deakin University publications, and I agree to abide by the Deakin College and Deakin University Refund policy ([deakincollege.edu.au/policies-procedures](#) and [deakin.edu.au/students/enrolment-fees-and-money/fees](#)) I understand that living expenses in Australia may be higher than in my own country. I confirm that I am able to meet these expenses.

I have understood and I accept the Conditions of Enrolment ([deakincollege.edu.au](#)). I understand that Deakin College may, vary its conditions as may be necessary to comply with any law or regulation, or amendment of any law or regulation, of the Commonwealth of Australia or the State of Victoria.I give permission to Deakin College and Deakin University to verify official records from an educational institution attended by me.

I understand that information is collected by Deakin College during my enrolment in order to meet its obligations under the Education Services for Overseas Students Act 2000 (ESOS Act) and the National Code of Practice for Registration Authorities and Providers of Education and Training to Overseas Students 2007 (National Code); to ensure student compliance with the

conditions of their visas and their obligations under Australian immigration laws generally. The authority to collect this information is contained in the ESOS Act, the Education Services for Overseas Students Regulations 2001 and the National Code 2007. Information collected about me during my enrolment can be provided, in certain circumstances, to the Australian Government and designated authorities and, if relevant, the Tuition Protection Scheme. In other instances information collected on during my enrolment can be disclosed without my consent where authorised or required by law.I understand that any conditions concerning an offer of admission will be contained in my letter of offer from Deakin College, which I will be required to read and sign.

Privacy Declaration

1. Our Privacy Policy, ([deakincollege.edu.au/privacy](#)) outlines how the information you provide us, will allow us to deal with your enquiry; to assess your application and, provide you with an outcome.

2. We will also be able to provide you with the information about the course you have applied for; the College; the Partner University and, our local community. It is really important that you read and understand the Privacy Policy ([deakincollege.edu.au/privacy](#)).

3. If you have questions about the Privacy Policy or how your personal information will be managed, please email: [privacy@navitas.com](#) and ask your question/s.

Applicant Declaration

If you agree to how we intend managing your personal information, by ticking the boxes below, we may contact you to provide you with relevant information on other courses that we offer, as well as other services offered by the College, University Partner or Navitas Group. It is important for you to know and understand that if you choose **NOT TO CONSENT** to us contacting you in this way, that we will be unable to provide you with information about some of the services we offer such as the type of accommodation we offer, or our Airport Meet and Greet service.

☐ I have read and understood the college’s Privacy Policy

☐ Yes ☐ No

☐ I consent to the college sending me marketing information by e-mail

☐ Yes ☐ No

☐ I consent to the college sending me marketing information by mail

☐ Yes ☐ No

☐ I consent to the college contacting me by telephone for marketing purposes

☐ Yes ☐ No

☐ I understand that the College will be collecting, processing and storing my personal information as part of this enquiry and/or application process

☐ Yes ☐ No

☐ I understand that the College may need to share my personal information with a third party in order to provide your services to me ([deakincollege.edu.au/privacy](#)) and I agree to this

☐ Yes ☐ No

As the applicant named on this ‘online application’
☐ I confirm that I have understood the questions above and that my answers represent how I want my personal information used.

Applicant’s signature:*

(must be the same signature as in your passport)

Date: DAY / MONTH / YEAR

If you are under 18 years of age, your parent or guardian must also sign this application form.

Parent’s/guardian’s signature:

Date: DAY / MONTH / YEAR

*Unsigned applications cannot be processed. Agents cannot sign on an applicant’s behalf.

Parent’s/guardian contact details

Family name:

Given names:

Relationship to applicant:

Address:

Telephone:

Mobile:

Email:

Application submission

This application form has been submitted in:

City:

Country:

Address for applications

Admissions Manager

Deakin College

221 Burwood Highway

Burwood Victoria 3125 Australia

T +61 3 9244 5197

F +61 3 9244 5198

E [dcoll-admissions@deakin.edu.au](#)

W [deakincollege.edu.au](#)

Or through a Deakin College representative.

Melbourne Institute of Business and Technology Pty Ltd trading as Deakin College.
CRICOS Provider Codes: Deakin College 01590J; Deakin University 00113B

Scholarships

Navitas family bursaries

Navitas offers financial support in the form of family bursaries. A bursary applies where two or more students from the same family study with a Navitas member institution*. The bursary is equivalent to 10% of the tuition fee of your program of study.†

Navitas academic merit scholarships

Navitas is committed to helping you achieve your career goals by offering scholarships to outstanding students. Each term, Navitas colleges* award two students with academic merit scholarships. For more information, talk to a student advisor at your college about how to apply for a merit scholarship or visit individual college websites and search for ‘scholarships and bursaries’.

More information about bursaries and scholarships can be found at:
[deakincollege.edu.au/scholarships](#)

* The Navitas family bursary and academic merit scholarships are offered to students studying at ACBT, BCUIC, Curtin College, Curtin Singapore, CRIC, Deakin College, Edith Cowan College, EIC, Eynesbury, FIC, Griffith College, HIC, ICM, ICP, ICRGU, ICWS, La Trobe Melbourne, La Trobe University Sydney Campus, LBIC, Navitas at FAU, Navitas at UMass Boston, Navitas at UMass Dartmouth, Navitas at UMass Lowell, Navitas at UNH, NIC, PUIC, SAIBT, SIBT and UCIC only.

Open
day dates

Warrnambool
04 AUG 2019
10AM–2PM

Geelong Waterfront
18 AUG 2019
9AM–3PM

Geelong Waurn Ponds
18 AUG 2019
9AM–3PM

Melbourne Burwood
25 AUG 2019
9AM–3PM

DEAKINCOLLEGE.EDU.AU 50

DC150701-947_0519_AW

Deakin College

Postal address

Deakin College at Deakin University
221 Burwood Highway
Burwood VIC 3125 Australia
E deakincollege@deakin.edu.au

Melbourne Burwood campus

Deakin College at Deakin University
70 Elgar Road (Entrance 3)
Building LA, Level 4
Burwood VIC 3125 Australia
T +61 3 9244 5197
F +61 3 9244 5198

Geelong Waterfront campus

Deakin College at Deakin University
Building C, Level 2, Room C2.002
27 Brougham Street
Geelong VIC 3220 Australia
T +61 3 5227 2890
F +61 3 5227 2310

Geelong Waurin Ponds campus

Deakin College at Deakin University
Building KA, Level 4
Pigdons Road
Waurin Ponds VIC 3216 Australia
T +61 3 5227 3433
F +61 3 5227 2310

Indonesia

Deakin College Jakarta Campus
Grand Slipi Tower 5th Floor
Jl. S. Parman Kav.22-24
Jakarta 11480 Indonesia
T +62 21 290 22285/87
F +62 21 290 22289

deakincollege.edu.au

Deakin College
is part of the
Navitas Group

The information contained in this brochure is correct at the time of publication; however, Deakin College reserves the right to alter, amend or delete details at any time without notice. For the most up-to-date course information please visit deakincollege.edu.au. Photographs in this publication are subject to copyright. This brochure is provided free of charge. Printed June 2019. DC190115-927 1019_AWR

Melbourne Institute of Business and Technology Pty Ltd trading as Deakin College; ABN 11 074 633 668.
National Code: 3946; CRICOS Provider Codes: Deakin College 01590J, Deakin University 00113B .