



INTERNATIONAL STUDY CENTRE



THE PLACE OF USEFUL LEARNING

WELCOME

The University of Strathclyde is a leading international technological university and our reputation and influence is global. With a community of more than 23,000 students, studying at Strathclyde is a fantastic experience, where you will enjoy flexible, innovative learning and excellent facilities.

We are renowned for our excellent teaching, world-class research and our strong links with industry, government and business. In addition to our exceptional range of industrial placements, internships and scholarships, Strathclyde offers a host of clubs and societies, volunteering opportunities and membership of Scotland's largest Students' Union.



Brian Green
Deputy Associate Principal
(Learning and Teaching)
University of Strathclyde

Studying at the University of Strathclyde International Study Centre is the first step on an exciting journey. Our programmes are specially tailored to provide you with the skills, knowledge and confidence that you need for a degree at the University of Strathclyde.

We pride ourselves on being able to offer you a great student experience with a high level of academic and pastoral support from our dedicated team here.

I look forward to meeting you on campus, and hope that you will enjoy studying alongside other like-minded students as you prepare for your future career.



Sarah Naismith
Head of Centre
University of Strathclyde
International Study Centre

A young woman with long dark hair and purple-rimmed glasses is looking upwards and to the right. She is wearing a white t-shirt with a blue patterned scarf. In the background, other students are visible, some wearing headscarves, all seated in red chairs in a lecture hall setting.

CONTENTS

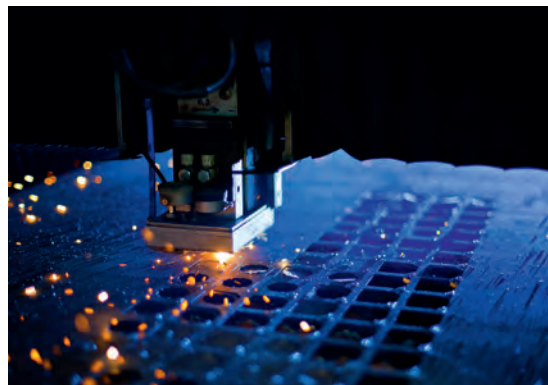
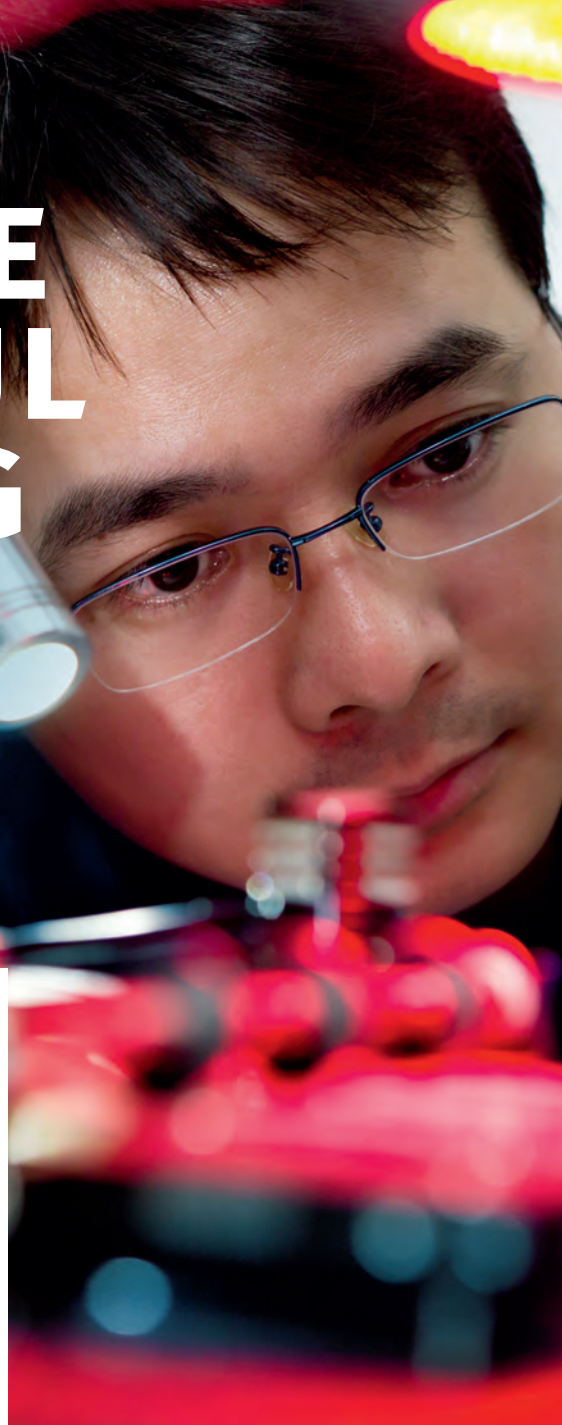
The Place of Useful Learning	02
High Subject Rankings	04
Home of Innovation	06
Careers & Employability	08
Fantastic Location	10
Your Strathlife	12
The International Study Centre	14
Undergraduate Foundation Programme	16
International Year One BBA	20
Pre-Masters Programme	24
Support & Accommodation	28
Your Campus	30
How to Apply	31

THE PLACE OF USEFUL LEARNING

The University of Strathclyde International Study Centre provides specialist degree preparation for international students.

Our programmes combine academic modules, study skills and English language training. These skills are designed to provide you with the best opportunity to succeed when you progress onto your degree programme at the University of Strathclyde.

The University of Strathclyde is an informed choice for the ambitious student seeking to achieve a recognised degree within a practical learning environment. Thanks to high subject rankings in key areas and a strong reputation with employers for producing top quality graduates, studying at Strathclyde will be the perfect springboard for your career success.

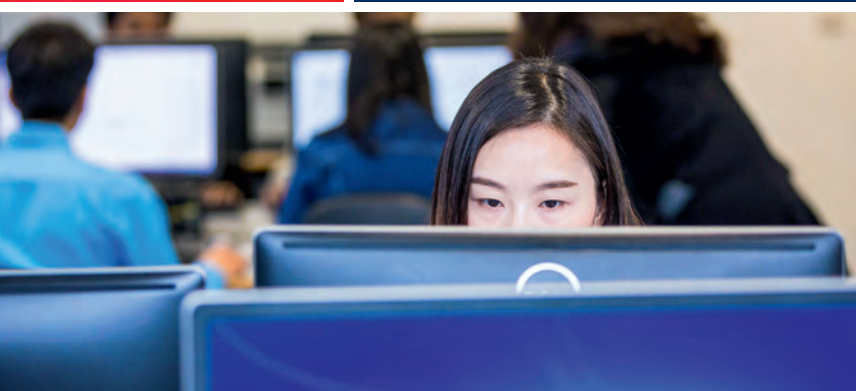




The multi award-winning
Law Clinic is the **first and
biggest law clinic in
Scotland**

A 5-star rated University

QS Stars University Ratings 2017-20



HIGH SUBJECT RANKINGS

**1st
in the UK**

for Accounting
& Finance

Communication &
Media Studies

Hospitality, Leisure,
Recreation &
Tourism

Pharmacology &
Pharmacy

Social Policy

**2nd
in the UK**

for Forensic Science

Marketing



**6th
in the UK**

for Business &
Management
Studies

Electrical &
Electronic
Engineering

**7th
in the UK**

for Chemical
Engineering

**8th
in the UK**

for Civil Engineering

Complete University Guide University League Tables 2019

HOME OF INNOVATION

University of Strathclyde students follow in the footsteps of extraordinary people, whose work is having a major impact around the world.

Some of the University's acclaimed former students include John Logie Baird – inventor of television, James Blyth – who built the world's first electricity-producing wind turbine, and Henry Faulds, the originator of fingerprint identification.

Other significant inventions and discoveries by Scots include asphalt, the telephone, the pneumatic tyre, the refrigerator, radar, penicillin, the steam engine, the thermos flask, the toaster, golf, the electric clock, the pedal bicycle, electromagnetics, and insulin.

The University is investing £650 million in new developments, including the newly opened Strathclyde Sport facility and the Learning and Teaching hub, due to open in 2020.

If you want to be on the cutting edge of innovation and discovery, Strathclyde is the place to be!





CAREERS & EMPLOYABILITY

You have access to Strathclyde's Careers Service from the day you join the University until graduation, and beyond.

Strathclyde's Careers Service can support you with job searches, postgraduate study applications, CV preparation and interview techniques. They can also help you to identify career paths that could suit your qualifications, experience and skills.

Your studies have been designed to help you develop your full potential and become highly employable. You will benefit from long-established partnerships with industry, business, and the voluntary and public sectors, both locally and around the world.

The Technology and Innovation Centre located on campus is home to companies such as GlaxoSmithKline, AstraZeneca, SSE, ScottishPower and the Weir Group.

When you graduate you join a global community of more than 170,000 former students, including scientists, explorers, engineers, entrepreneurs, policy-makers, inventors and educators.

For more information, please visit
www.strath.ac.uk/careers



Maha from Saudi Arabia

Studied Undergraduate Foundation
Programme in Business and Social Sciences
Graduated with Hospitality & Tourism
Management BA (Hons)

I feel proud and the International Study
Centre and the University of Strathclyde
made me really ready to face challenges.
They made me get ready for a career
by doing workshops and practice job.
...Now I've got an internship at PwC
Middle East.



FANTASTIC LOCATION

The University of Strathclyde is located in the city centre of Glasgow, one of the UK's largest and most dynamic cities.

Glasgow's diversity, friendliness, and quality of life make it a perfect location to live and study.

Glasgow facts

- 1,800 cafés and restaurants
- Over 20 museums and galleries
- More than 100 music events every week
- Over 90 public parks and green spaces
- UNESCO City of Music
- Top 10 destinations to visit (New York Times, 52 Places to Go in 2018)

Glasgow has excellent transport links to the rest of the UK, Europe and overseas, which means Glasgow is a prime location, no matter where you would like to go.

Living in Scotland

Scotland is renowned for its breathtaking landscape, with magnificent mountain ranges and castles. You can enjoy activities such as hill walking, skiing, mountain biking, water sports and paintballing.

To find out more about living in Glasgow, please visit www.strath.ac.uk/isc/location





YOUR STRATHLIFE





From a state-of-the-art library to one of Scotland's most dynamic student unions – Strathclyde has everything you need for an amazing student experience.

The University offers a range of opportunities for you to experience student life in Glasgow. You can access all of these opportunities when you are in the International Study Centre.

Get involved

Getting involved in the activities at the Students' Union is a huge part of university life. It is a great way to meet people and a fun way to gain skills and experience valued by employers.

Join in

- 10-floor Union building with bars, restaurants and a café
- More than 170 clubs and societies
- Nearly 50 sport and fitness clubs
- Student Media Centre
- Strathclyde International Society

The £31 million Strathclyde Sport building provides a range of sport and wellbeing facilities for students, staff and the local community.

The Centre offers state-of-the-art training facilities, including a 25-metre swimming pool, fitness suite with capacity for over 180 people, sports halls, squash courts, dance studio and treatment rooms.

The University's Information Services support your university experience with first-class IT facilities and services, including campus PCs, IT support and training, student web portal and virtual learning environment.

The University Library has a wide variety of areas suitable for individual or group study work, around one million print volumes, more than one million electronic books and over 105,000 e-journals.

For more information, please visit
www.strath.ac.uk/sport
www.strathstudents.com
www.strath.ac.uk/library
www.strath.ac.uk/is



THE UNIVERSITY OF STRATHCLYDE INTERNATIONAL STUDY CENTRE

Your pathway to the University of Strathclyde



This is an example timeline. Some exceptions may apply.
Find out more on the following programme pages.

The University of Strathclyde International Study Centre offers pathway programmes that provide international students with the academic and English language skills to undertake a degree at the University.

You will be part of the University from the day you start at the International Study Centre. As well as benefiting from resources at the International Study Centre, you will have access to all University facilities such as the Library, Centre for Sport & Recreation and Students' Union.

The International Study Centre introduces you to the style of teaching that you will experience when you progress on to your degree at Strathclyde. This includes tutorials, seminar-style classes and large group lectures.

You will receive personal monitoring and support during your studies at the International Study Centre. You will be assessed regularly throughout the course to help us monitor your progress. You will also benefit from individual tutorial sessions to help you address any concerns or areas you need to focus on.

Programme options

Depending on your academic background, English language level and age, you can choose from three programmes:

- Undergraduate Foundation Programme
 - International Year One BBA
 - Pre-Masters Programme
-

Career skills for success

To help you fulfil your career ambitions once you graduate, the International Study Centre offers a variety of CareerAhead activities designed to give you a head start by helping you become a highly skilled, self-aware, confident and employable graduate.

You will develop key employability skills, such as teamwork, problem solving and communication, and familiarise yourself with the world of work. You will also assess your strengths and areas for improvement. With help from your tutors, you will create a personal development plan to help set goals for your future success.

99% of International Study Centre students who completed their course were offered a place to study at the University of Strathclyde in 2018

UNDERGRADUATE FOUNDATION PROGRAMME

A pathway to the second year of a four-year undergraduate degree at the University of Strathclyde.[^]

You can choose from two pathways, and you will study core modules as well as route-specific modules designed to focus on the academic areas most useful for your degree.

Once you have completed the programme and achieved the required grades[†], you can start the second year of your chosen degree at the University.

BUSINESS AND SOCIAL SCIENCES PATHWAY

Core modules

Academic English Skills, Personal Awareness, Communication and Employability Skills, and Quantitative Methods

Route modules[‡]

Business:

Accounting and Finance, Economics, Human Resources and Organisational Behaviour, Marketing and Operations, Strategy and the Business Environment

Social Sciences:

International Relations, Introduction to Social Sciences, Law 1 & 2, Politics, Psychology 1 & 2, Understanding Education in the 21st Century

ENGINEERING AND SCIENCES PATHWAY

Core modules

Academic English Skills, Personal Awareness, Communication and Employability Skills, Lab Skills and Scientific Communication, and Maths for Science and Engineering 1 & 2

Route modules

The modules you will study depend on what subject you are planning to study at Strathclyde.

Biomedical Science:

Anatomy, Physiology & Neuroscience, Cellular & Molecular Biology, Chemistry 1 & 2

Chemical & Process Engineering:

Applied Mathematics 1, Chemistry 1 & 2, and one from the following: Applied Mathematics 2, Physics 1 or Physics 2

Chemistry:

Chemistry 1 & 2, and one from the following pairs: Applied Mathematics 1 & 2 or Physics 1 & 2

Computing:

Computing 1 & 2, and one from the following pairs: Chemistry 1 & 2, Physics 1 & 2 or Chemistry 1 & Physics 1

Electronic & Electrical Engineering,

and Computer & Electronic Systems:

Computing 1, Electronics, Physics 1 & 2

All other Engineering subjects, and Physics:

Applied Mathematics 1 & 2, Physics 1 & 2

[^]Some exceptions may apply.

[†]Should you not reach the grades required for progression to year two, there may be the option to progress to year one.

Find out more on the following programme pages.

[‡]You can choose five additional route modules related to your progression degree. If you are aiming to study a joint degree, you have the option to choose from both business and social sciences route modules.

Study plan options

IELTS (UKVI)*	Terms	Start	Jun	Jul	Aug	Sept	Oct	Nov	Dec	Jan	Feb	Mar	Apr	May	Jun	Jul	Aug	Sept
5.0 overall (with minimum of 4.5 in writing)	3	Sept																
4.5 overall (with minimum of 4.5 in writing)	4	Sept																
5.0 overall (with minimum of 4.5 in writing)	3	Jan																
4.5 overall (with minimum of 4.5 in writing)	4	Jun																
4.0 overall (with minimum of 4.0 in writing)	5	Jun																

English Language Preparation
Undergraduate Foundation Programme
Progress to year 2 of degree[^]
Vacation

^{*}If you do not need a Tier 4 visa, or are exempted in another way, we can accept equivalent proof of English.



Paddy from Nigeria

Studied Undergraduate
Foundation Programme in
Business and Social Sciences
Progressed to Accounting
BA (Hons)

The International Study Centre
was really supportive as it
helped us to fit in to University
life, especially when it comes
to preparing for the bulk of the
academic work. I remember
when I transited to the University
I wouldn't find any trouble
finishing an assignment.



KEY FACTS

Entry requirements

Academic: Good high school
graduation grades or equivalent
English language: Academic IELTS for
UKVI 5.0 overall (with minimum 4.5
in writing)*
Age: 17+

General information

Programme length: 3 terms
Entry dates: September or January

English Language Preparation

We have 1-term or 2-term English
Language Preparation courses
available. The courses are designed to
raise your IELTS to the required level.

Entry dates

June or September (1-term)
June (2-term)

UNDERGRADUATE FOUNDATION PROGRAMME

Upon completion of your Undergraduate Foundation Programme and satisfying the progression criteria, you may proceed to the second year of your chosen undergraduate degree at the University of Strathclyde. The required progression grade will depend on your chosen degree course.

5th in the UK
for Architecture

8th in the UK
for General
Engineering

Complete University Guide University
League Tables 2019

PROGRESSION DEGREES

BUSINESS AND SOCIAL SCIENCES

Faculty of Humanities & Social Sciences

Education & Law BA (Hons)
Education & Politics & International Relations BA (Hons)
Education & Psychology BA (Hons)
Education & Sport BA (Hons)
Education & TESOL BA (Hons) (Only 15 places available)
English Law LLB (Hons) (3-year degree)*
Law & Economics BA (Hons)
Law & Politics & International Relations BA (Hons)
Law & Psychology BA (Hons)
Philosophy, Politics & Economics BA (Hons) (3-year degree)*
Politics & International Relations BA (Hons)
Politics & International Relations & Economics BA (Hons)
Politics & International Relations & Psychology BA (Hons)
Primary Education BA (Hons)
(Interview is required for progression. Students need to join the Protecting Vulnerable Groups, PVG Scheme)*
Psychology BA (Hons)
Psychology & Economics BA (Hons)
Speech & Language Pathology BSc (Hons)
(Requires referral. Interview may be required for progression and degree includes work placement)*
Sport & Physical Activity BSc (Hons)*

Strathclyde Business School

Accounting BA (Hons)*
Business Administration BBA (Hons) (3-year degree)*
Business Analysis & Technology BA (Hons)
Business Enterprise BA (Hons)
Business Law & Business Analysis & Technology BA (Hons)
Business Law & Business Enterprise BA (Hons)
Business Law & Hospitality & Tourism Management BA (Hons)
Business Law & Human Resource Management BA (Hons)
Business Law & Marketing BA (Hons)
Economics BA (Hons)
Economics & Business Analysis & Technology BA (Hons)
Economics & Business Enterprise BA (Hons)
Economics & Business Law BA (Hons)
Economics & Finance BA (Hons)
Economics & Human Resource Management BA (Hons)
Economics & Management BA (Hons)
Economics & Marketing BA (Hons)
Economics & Maths & Statistics BA (Hons)
Economics & Psychology BA (Hons)
Finance BA (Hons)
Finance & Business Analysis & Technology BA (Hons)
Finance & Business Enterprise BA (Hons)
Finance & Business Law BA (Hons)
Finance & Human Resource Management BA (Hons)
Finance & Management BA (Hons)
Finance & Marketing BA (Hons)
Finance & Maths & Statistics BA (Hons)
Human Resource Management BA (Hons)
Management BA (Hons)
Marketing BA (Hons)

Progression degrees are subject to change.
For more information including the grades required to progress, please visit www.strath.ac.uk/isc

ENGINEERING AND SCIENCES

Faculty of Engineering

Aero-Mechanical Engineering BEng (Hons)
Architectural Studies BSc (Hons)*^
Biomedical Engineering BEng (Hons)
Chemical Engineering BEng (Hons)
Civil Engineering BEng (Hons)
Civil & Environmental Engineering BEng (Hons)
Computer & Electronic Systems BEng (Hons)
Electrical & Mechanical Engineering BEng (Hons)
Electronic & Electrical Engineering BEng (Hons)
Mechanical Engineering BEng (Hons)
Mechanical Engineering with International Study BEng (Hons)
Naval Architecture with High Performance Marine Vehicles BEng (Hons)
Naval Architecture & Marine Engineering BEng (Hons)
Naval Architecture with Ocean Engineering BEng (Hons)
Product Design & Innovation BSc (Hons)
Product Design Engineering BEng (Hons)
Production Engineering & Management BEng (Hons)
Prosthetics & Orthotics BSc (Hons)*†
Sports Engineering BEng (Hons)

Faculty of Science

Applied Chemistry BSc (Hons)‡
Biochemistry MSci
Biochemistry and Immunology BSc (Hons)‡
Biochemistry and Microbiology BSc (Hons)‡
Biochemistry and Pharmacology BSc (Hons)‡
Biology with Teaching BSc (Hons)‡
Biomedical Science BSc (Hons)‡
Biomolecular Sciences BSc (Hons)‡
Chemistry BSc (Hons)‡
Chemistry with Analytical Chemistry BSc (Hons)‡
Chemistry with Drug Discovery BSc (Hons)‡
Chemistry with Forensic Chemistry BSc (Hons)‡
Chemistry with Teaching MChem
Computer Science BSc (Hons)‡
Data Analytics BSc (Hons)‡
Forensic and Analytical Chemistry MChem
Immunology BSc (Hons)
Immunology and Microbiology BSc (Hons)‡
Immunology and Pharmacology BSc (Hons)‡
Mathematics BSc (Hons)‡
Mathematics & Computer Science BSc (Hons)‡
Mathematics & Physics BSc (Hons)‡
Mathematics with Teaching BSc (Hons)‡
Mathematics, Statistics & Accounting BSc (Hons)‡
Mathematics, Statistics & Business Analysis BSc (Hons)‡
Mathematics, Statistics & Economics BSc (Hons)‡
Mathematics, Statistics & Finance BSc (Hons)‡
Microbiology BSc (Hons)
Pharmacology MSci‡‡
Pharmacology and Microbiology BSc (Hons)‡
Pharmacy MPharm (Only 20 places available)‡
Physics BSc (Hons)‡
Physics with Advanced Research MPhys‡
Physics with Teaching BSc (Hons)‡
Software Engineering BSc (Hons)‡

* Progression to year 1 of this degree.

^ Portfolio and pre-approval required before you can receive an offer.

† University interview and pre-approval required before you can receive an offer.

‡ If you do not achieve the grades required for progression to year 2, you may be able to progress to year 1 of these degrees.

‡‡ Students enter year 2 and study 4 years at the University.



Mona from Egypt

Studied Undergraduate Foundation
Programme in Engineering and Sciences
Progressed to Electronic & Electrical
Engineering BEng (Hons)

I chose Electronic and Electrical Engineering because it has this really cool combination of coding and computing and physics and electronics. It really opens up a lot of different job aspects into your majors and after University life.



INTERNATIONAL YEAR ONE BBA

A pathway to the second year of a three-year Bachelor of Business Administration (BBA) degree at the University of Strathclyde.

The International Year One BBA is equivalent to the first year of an undergraduate degree. It consists of study modules that have been especially designed to focus on the academic areas most useful for your degree.

Once you complete the programme and achieve the required grades, you can enter the second year of a three-year Business Administration (BBA) degree in Strathclyde Business School, one of the 90 business schools in the world to hold triple accreditation status (MBA Today News, 2019).

Core modules

Academic English Skills, Accounting and Finance, Economics, Global Business in Context, Marketing in Action, Mathematics for Business and Decision Making, People in Organisations, Personal Awareness, Communication and Employability Skills

Study plan options

IELTS (UKVI)*	Terms	Start	Sept	Oct	Nov	Dec	Jan	Feb	Mar	Apr	May	Jun	Jul	Aug	Sept
5.5 overall (with minimum of 5.5 in writing)	3	Sept													
5.5 overall (with minimum of 5.5 in writing)	3	Jan													

■ International Year One BBA
 ■ Progress to year 2 of degree
 ■ Vacation

*If you do not need a Tier 4 visa, or are exempted in another way, we can accept equivalent proof of English.



KEY FACTS

Entry requirements

Academic: Good high school graduation grades or equivalent

English language: Academic IELTS for UKVI 5.5 overall (with minimum 5.5 in writing)*

Age: 17+

General information

Programme length: 3 terms

Entry dates: September or January

INTERNATIONAL YEAR ONE BBA

Upon completion of your International Year One BBA and satisfying the progression criteria, you may proceed to the second year of this three-year degree at the University of Strathclyde.

Strathclyde
Business School
**is triple
accredited:
AACSB, EQUIS
& AMBA**

PROGRESSION DEGREES

STRATHCLYDE BUSINESS SCHOOL

Business Administration (BBA)

Studying Business Administration (BBA) at Strathclyde will develop your understanding of negotiation and strategic management as part of an integrated Leadership Development Programme. You will benefit from practical learning and the University's links with business, industry and the public sector. Recent graduates have gone on to careers in investment banking, management consultancy and risk management.

Progression degrees are subject to change.

For more information including the grades required to progress, please visit www.strath.ac.uk/isc



PRE-MASTERS PROGRAMME

A pathway to a wide variety of postgraduate degrees at the University of Strathclyde.

The Pre-Masters Programme provides academic and English language study modules to prepare you for a postgraduate degree at the University of Strathclyde.

Choose from two subject pathways, depending to the degree you want to study.

Once you have completed the programme and achieved the required grades, you can start your chosen postgraduate degree at the University.

BUSINESS AND SOCIAL SCIENCES PATHWAY

Core modules

Academic English Skills, Critical Reading and Applied Academic Writing, Maths for Business and Social Sciences, Personal Awareness, Communication and Employability Skills, Research Methods and Data Analysis, Research Project

Route modules

The module you will study depends on what subject you are planning to study at Strathclyde.

The Business Environment or Social Sciences: Global Perspectives

ENGINEERING AND SCIENCES PATHWAY

Core modules

Academic English Skills, Critical Reading and Applied Academic Writing, Maths for Engineering and Science, Personal Awareness, Communication and Employability Skills, Research Methods and Data Analysis, Research Project.

Route modules

The module you will study depends on what subject you are planning to study at Strathclyde.

Applied Numerical Analysis with MATLAB or Lab Skills and Scientific Communications

Study plan options

IELTS (UKVI)*	Terms	Start	Sept	Oct	Nov	Dec	Jan	Feb	Mar	Apr	May	Jun	Jul	Aug	Sept
4.5 overall (with minimum of 4.5 in all areas)	4	Sept													
5.0 overall (with minimum of 5.0 in all areas)	3	Sept													
5.0 overall (with minimum of 5.0 in all areas)	3	Jan													
5.5 overall (with minimum of 5.5 in all areas)	2	Jan													
5.5 overall (with minimum of 5.5 in all areas)	2	Apr													

English for Pre-Masters
 Pre-Masters Programme
 Start postgraduate degree
 Vacation

*If you do not need a Tier 4 visa, or are exempted in another way, we can accept equivalent proof of English



Michael from Nigeria

Studied Pre-Masters Programme
in Business and Social Sciences
Progressed to Investment &
Finance MSc

I was well aware there were certain constructs, concept-wise, that I had to grasp. I wanted a preparatory phase before I jumped into it. It gets you in that scholar mind-state and that pretty much set a foundation for my thinking.



KEY FACTS

Entry requirements

Academic: Recognised degree
in related field

English language: Academic IELTS
for UKVI 5.5 overall (with minimum 5.5
in all areas)*

Age: 20+

General information

Programme length: 2 terms

Entry dates: January or April

English Language Preparation

We have 1-term or 2-term English
for Pre-Masters courses available.
The courses are designed to raise
your IELTS to the required level.

Entry dates

January or September (1-term)

September (2-term)

PRE-MASTERS PROGRAMME

Upon completion of your Pre-Masters Programme and satisfying the progression criteria, you may proceed to your chosen postgraduate degree at the University of Strathclyde. The required progression grade will depend on your chosen degree course.

1st in the UK
for Medical
Technology

9th in the UK
for Mechanical
Engineering

Complete University Guide University
League Tables 2019

PROGRESSION DEGREES

BUSINESS AND SOCIAL SCIENCES

Faculty of Humanities and Social Sciences

Autism MSc*[‡]
Business Translation & Interpreting MSc/PG Dip[‡]
Construction Law LLM
Criminal Justice & Penal Change LLM/MSc
Digital Journalism MLitt
Education Studies MSc (Some subjects may require previous teaching qualification and experience)
European Politics MSc
Global Environmental Law & Governance LLM
Health History MSc
Historical Studies MSc
Human Rights Law LLM
International Commercial Law LLM
International Law & Sustainable Development LLM
International Relations MSc
International Relations, Law & Security MSc/LLM
International Social Welfare MSc
Internet Law & Policy LLM
IT & Telecommunications Law LLM
Law LLM
Law & Finance LLM
Media & Communication MLitt
Mediation & Conflict Resolution MSc
Physical Activity in Non-communicable Disease Prevention & Control MSc
Political Research MSc
Politics MSc
Primary Education PGDE (Interview and Advanced Disclosure check required)
Public Policy MSc
Secondary Education PGDE (Interview and Advanced Disclosure check required)
Social Policy MSc
Social Policy (Research Methods) MSc
TESOL & Intercultural Communication MSc

Strathclyde Business School

Business Analysis & Consulting MSc
Business & Management MSc
Data Analytics MSc
Digital Marketing Management MSc
Economics, Applied MSc
Economics & Finance MSc
Entrepreneurial Management & Leadership MSc
Entrepreneurship, Innovation & Technology MSc
Finance MSc
Finance & Management MSc
Financial Technology MSc
Global Energy Management MSc
Global Sustainable Cities MSc
Human Resource Management MSc
Human Resources & International Management MSc
Innovation & Marketing Management MSc
International Accounting & Finance MSc
International Banking & Finance MSc
International Human Resource Management MSc
International Management MSc
International Marketing MSc
Investment & Finance MSc
Marketing MSc
Project Management & Innovation MSc
Quantitative Finance MSc
Tourism Marketing Management MSc

ENGINEERING AND SCIENCES

Faculty of Engineering

5G Advanced Communications MSc
Advanced Construction Technology & Building Information Management MSc[‡]
Advanced Manufacture: Technology & Systems MSc
Advanced Mechanical Engineering MSc
Advanced Mechanical Engineering with Aerospace MSc[‡]
Advanced Mechanical Engineering with Energy Systems MSc[‡]
Advanced Mechanical Engineering with Materials MSc[‡]
Advanced Mechanical Engineering with Industrial Placement MSc[‡]
Advanced Mechanical Engineering with Power Plant Technologies MSc[‡]
Architectural Design for the Conservation of Built Heritage MSc[†]
Architectural Design, International MArch[†]
Autonomous Robotic Intelligent Systems MSc
Biofluid Mechanics MSc
Biomedical Engineering MSc
Chemical & Process Engineering, Advanced MSc
Civil Engineering MSc (with optional specialist streams)
Civil Engineering with Industrial Placement MSc
Communications, Control & Digital Signal Processing MSc
Design Engineering/Design Engineering with Advanced Product Development/Sustainability MEng
Digital Manufacturing MSc
Electrical Power Engineering with Business MSc
Electrical Power Engineering, Advanced MSc (24 month course)
Electronic & Electrical Engineering MSc
Engineering Management for Process Excellence MSc
Environmental Engineering MSc
Environmental Entrepreneurship MSc
Environmental Health Sciences MSc
Global Innovation Management MSc
Hydrogeology MSc
Marine Engineering MSc
Mechatronics & Automation MSc
Medical Devices MSc
Offshore Floating Systems MSc
Oil & Gas Innovation MSc
Product Design MSc
Prosthetics & Orthotics MSc
Renewable Energy Systems & Environment MSc
Ship & Offshore Structures MSc
Ship & Offshore Technology MSc
Subsea & Pipeline Engineering MSc
Supply Chain & Operations Management/Logistics Management/Procurement Management MSc
Sustainability & Environmental Studies MSc
Sustainable Engineering: Architecture & Ecology MSc[‡]
Sustainable Engineering: Marine Technology MSc
Sustainable Engineering: Offshore Renewable Energy MSc
Sustainable Engineering: Renewable Energy Systems and the Environment MSc
Systems Engineering Management MSc
Technical Ship Management MSc
Urban Design MSc[‡]
Wind Energy System MSc

Faculty of Science

Actuarial Science MSc
Advanced Biochemistry MSc
Advanced Computer Science MSc
Advanced Computer Science with Big Data MSc
Advanced Drug Delivery MSc
Advanced Immunology MSc
Advanced Pharmaceutical Manufacturing MSc
Advanced Pharmacology MSc
Advanced Physics MSc
Advanced Software Engineering MSc
Applied Physics MSc
Applied Statistics MSc
Applied Statistics in Health Sciences MSc[‡]
Biomedical Sciences MSc
Cancer Therapies MSc
Clinical Pharmacy MSc
Digital Health Systems MSc
Enterprise Information Systems MSc
Forensic Science MSc
Industrial Biotechnology MSc
Industrial Photonics MSc^{‡‡}
Information & Library Studies MSc
Information Management MSc
Information Management with Placement MSc
Molecular Microbiology MSc
Nanoscience MSc
Optical Technologies MSc
Pharmaceutical Analysis MSc
Pharmacy Practice: Clinical MSc
Software Development MSc

*Students must have relevant degree or direct experience living or working with individuals on the autism spectrum. Statement detailing experience required on application.

†In addition to English, students must be proficient in one of the following languages: Chinese, German, Spanish, Italian or French. Applicants complete written and oral aptitude tests.

†Portfolio and pre-approval required before you can receive an offer.

‡If you are not allocated an industrial placement, you may be considered for the Optical Technologies MSc.

‡‡Pre-approval required before you can receive an offer.

Progression degrees are subject to change.

For more information including the grades required to progress, please visit www.strath.ac.uk/isc

94%
of graduates
were in work or
study six months
after graduation

Provided by the University of Strathclyde Strategy
& Policy team

SUPPORT & ACCOMMODATION

WE ARE HERE FOR YOU

Starting university, meeting new people and discovering a new way of learning is exciting. We are here to support and help you make the most of your time at the International Study Centre and Strathclyde.

We aim to create a friendly atmosphere at the International Study Centre. Staff are very helpful. They always go the extra mile, making the pastoral care and support you will receive at the International Study Centre excellent. Students also say that they feel welcomed, safe, confident and part of Strathclyde from day one.

When you progress to the University, you will benefit from a range of services designed to help you overcome any challenges you may experience. These include the Information & Advice Team, Student Financial Support Team, Chaplaincy, Disability Service, Counselling Service, and Student Health Service.

You will also have your own Study Adviser and the Study Skills Service helps all students enhance their academic performance, across all academic disciplines.

HOME AWAY FROM HOME

Living on campus is a great way to settle into life away from home and to make new friends.

Each hall of residence is only a few minutes' walk from the International Study Centre and main University buildings, and all enjoy excellent access to facilities, including the library, Students' Union and the Sports Centre.

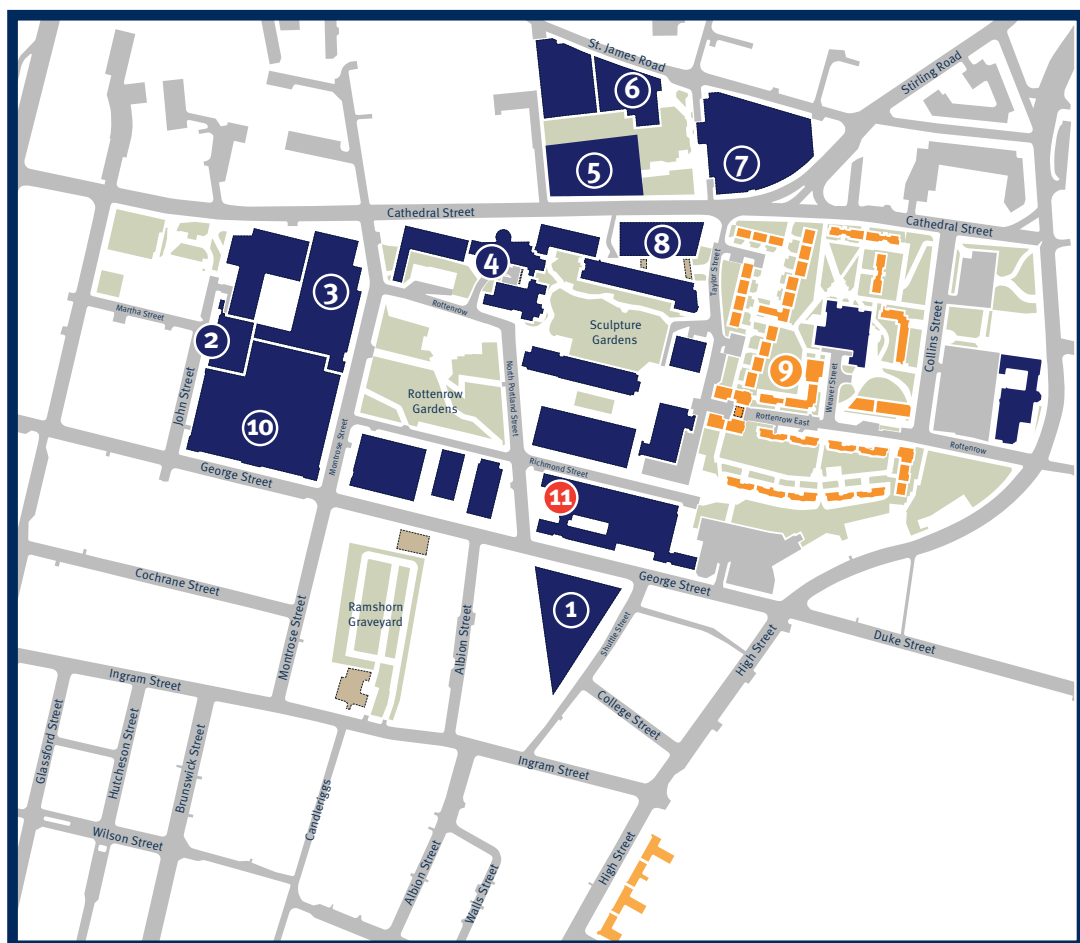
All the accommodation is self-catering, with a dedicated on-site management team and a night porter outside office hours. All rooms have free internet access.

For more information, including virtual tours, please visit www.strath.ac.uk/isc



YOUR CAMPUS

- 1 Technology and Innovation Centre
- 2 Students' Union
- 3 James Weir Building (The Faculty of Engineering)
- 4 Strathclyde Business School
- 5 Strathclyde Sport
- 6 Lord Hope Building
- 7 Andersonian Library
- 8 Strathclyde Institute of Pharmacy and Biomedical Sciences
- 9 Campus Village
- 10 Royal College Building
- 11 International Study Centre



HOW TO APPLY

If you would like to apply to study at the University of Strathclyde International Study Centre, you will need to complete an application form and submit the relevant documentation.

You can either apply through your local education agent or directly via our website.

If you are applying directly and have a question, then a Student Enrolment Adviser will be happy to help. They speak a variety of languages and understand several more.

T: + 44 (0) 1273 339333

For more information, please visit www.strath.ac.uk/isc

Student insurance

We strongly recommend that international students have the protection of personal insurance whilst in the UK. To cover you as a student at the International Study Centre, you may wish to purchase our “StudyCare Insurance Plus” insurance cover. This policy will cover you for loss of personal possessions, travel delay, as well as providing medical insurance until the end of your International Study Centre academic programme. You can purchase StudyCare Insurance Plus as part of the application process. If you prefer, you may take out insurance cover with another provider.

For more information, please visit www.strath.ac.uk/isc







Estelle from Singapore

Studied Undergraduate Foundation
Programme in Business and
Social Sciences

Graduated with Business
Enterprise BA (Hons)

Now working at a cyber-security
start-up in Singapore as a
Customer Success Manager

**My best achievement since graduating
would be project managing the two week
long event for Singapore Design Week 2018,
which attracted more than 20,000 visitors.
My communication skills have been honed
abroad, which really helped in all the
communication that took place amongst
the wide array of stakeholders involved.**



Contact details

To apply, or for further information,
please contact:

University of Strathclyde
International Study Centre
Admissions Centre
1 Billinton Way
Brighton
BN1 4LF
United Kingdom

T: + 44 (0) 1273 339333

www.strath.ac.uk/isc

Join us on social media



#MyStrathStory



The International Study Centre
programmes are provided by Study
Group in collaboration with the
University of Strathclyde.

Programmes at the International
Study Centre are delivered by
Study Group.

For more information, please visit
studygroup.com

Disclaimer

This prospectus is intended as a general guide for students considering entry to the University of Strathclyde International Study Centre from 2019. The University of Strathclyde International Study Centre is operated, and its courses offered by, Bellerbys Educational Services Limited (trading as Study Group). This prospectus forms no part of any contract between you and Study Group except as provided below. The prospectus is prepared in advance of the academic year to which it relates and Study Group makes every effort to ensure that the information contained here is accurate.

Although reasonable steps are taken by Study Group to provide the courses and services described, Study Group cannot guarantee the provision of any course. Any course may be altered or withdrawn owing to circumstances beyond Study Group's reasonable control. Such circumstances include (but are not limited to) industrial action, lack of demand, departure of key personnel, change in government policy, withdrawal or reduction of funding, change of law. Study Group will take such steps as are available to it to minimise the effect of any alteration or withdrawal of a course and we will notify you of such alteration or withdrawal as soon as possible. Such steps may include the offer of a place on an alternative course.

Please note that the University of Strathclyde International Study Centre's website is the most up to date source of information regarding courses and facilities and we strongly recommend that you always visit the website before making any commitments.

University of Strathclyde, its logo, Study Group and the Study Group logo are registered Trade Marks of University of Strathclyde and Study Group respectively. Unless otherwise stated, all material in this publication is copyright of Study Group. No part of this publication may be reproduced, stored in a retrieval system or transmitted in any form, or by any means, electronic, mechanical, photocopying, recording or otherwise, without the permission of Study Group.

