

University of Surrey
International Study Centre
Admissions Centre,
1 Billinton Way Brighton, BN1 4LF, UK
T: +44 (0)1273 339 333
isc.surrey.ac.uk

agents: agents.studygroup.com



The International Study Centre programmes are provided by Study Group in collaboration with the University of Surrey.

Ist

IN THE UK FOR WORK PLACEMENTS
AND RESEARCH PARTNERSHIPS
(QS WORLD EMPLOYABILITY
RANKINGS 2020)

EXPERIENCE LIFE AT

Surrey

Disclaimer

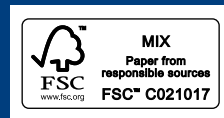
This prospectus is issued for the general guidance of students considering entry to University of Surrey International Study Centre from 2020. The information is correct at the time of going to press and the programmes and services described herein are those which Study Group is planning to offer. We make every effort to ensure that the content of our prospectus, website and other materials is accurate. However, on occasion it may be necessary to alter certain aspects of a module or programme, for example if changes are required to meet external requirements; or if programmes are over-subscribed and the quality of teaching would be adversely affected as a result.

In such circumstances we may have to alter the timetable, change the teaching location of the programme or, in extreme cases, cancel or substantially amend the content of the programme. Should any of these changes become necessary, we will give you as much notice as possible before they come into effect and ensure that any disruption to your studies is minimised.

If your programme is cancelled, we will work in consultation with you to offer a suitable alternative, subject to meeting the admission requirements for that programme or the opportunity to obtain a refund of any advance payments you have made for the programme. The alternative programme may not be at the same International Study Centre as the original offer.

Study Group reserves the right, where applicable, to amend the regulations governing programmes at University of Surrey International Study Centre. We therefore strongly recommend that immediately prior to making any application to - or accepting any offer from - us, you refer to the most up-to-date version of the programme descriptions and specifications and the regulations on University of Surrey International Study Centre website.

Neither the University nor Study Group shall be liable for any errors or omissions that may be contained in this prospectus.



INTERNATIONAL STUDY CENTRE

Contents

	2
Welcome to Surrey	
	8
World-class facilities	
	10
Research excellence	
	12
Your future	
	14
The International Study Centre	
	17
International Foundation Year	
	18
Business, Economics, Law and Social Sciences	
	20
Engineering and Physical Sciences	
	22
Life Sciences	
	25
English Language Preparation	
	27
Pre-Masters Programme	
	28
Management, Finance, Hospitality and Tourism	
	30
Engineering	
	32
Health and Medical Sciences	
	34
English for Pre-Masters	
	36
Clubs and societies	
	39
Student life	
	40
Feel at home	
	42
Our accommodation	
	44
Discover Guildford	
	45
How to apply	
	46
Campus map	

Welcome

TO A TRULY GLOBAL POINT OF VIEW

THIS PROSPECTUS IS YOUR GUIDE TO THE UNIVERSITY OF SURREY INTERNATIONAL STUDY CENTRE, WHICH OFFERS FOUNDATION AND PRE-MASTERS PROGRAMMES TO PREPARE YOU FOR A SUCCESSFUL DEGREE.

We work hard to make sure your time studying with us is the best it can be. You will be part of the University from day one and have access to the University's world-class facilities. With Surrey's outstanding reputation for student satisfaction, you can be confident that a wonderful undergraduate experience awaits.

Greetings from the University of Surrey – one of the leading universities in the UK with a rising global reputation. Thank you for considering Surrey as the next destination on your journey to an exciting new chapter in your life.

Studying at Surrey will unlock the potential to achieve your ambitions. It will equip you with the knowledge, skills and confidence for academic and personal success. Located in historic and beautiful Guildford, and close to London, our campus offers a safe, friendly and vibrant environment with excellent facilities for all levels of study. To help you settle in, we run a comprehensive induction week, with an international orientation programme a few days earlier.

Whichever path you take after graduation, your education at Surrey promises to transform your life.

I'm honoured to welcome you to the University of Surrey International Study Centre. I hope you are excited and inspired by the wonderful journey ahead of you.

The University of Surrey offers international students like you unrivalled opportunities to pursue your passions, achieve your potential and prepare for future career success.

I wish you the very best of luck and look forward to meeting you as you embark on your studies.



Jessica Coupe
Centre Director
University of Surrey
International Study Centre



Professor G Q Max Lu
President and
Vice-Chancellor
University of Surrey



Success starts here

▶▶▶ THE UNIVERSITY OF SURREY IS BASED IN GUILDFORD, SOUTH EAST ENGLAND. SURROUNDED BY BEAUTIFUL ENGLISH COUNTRYSIDE, THE UNIVERSITY IS STILL WITHIN EASY REACH OF LONDON, ONE OF THE MOST EXCITING CAPITAL CITIES IN THE WORLD.

Thanks to its quality teaching, world-leading research and high student satisfaction rate, Surrey is a top 25 UK University, ranking 23rd in the Complete University Guide 2020.

The University maintains its excellent reputation by providing an innovative learning environment where you can excel. You will be inspired to work hard and think critically as you lay the foundations for a successful future. With international students from over 120 different countries making up 35 per cent of the student body, Surrey is proud to be one of the most culturally-diverse universities in the UK.

23rd

IN THE COMPLETE
UNIVERSITY
GUIDE 2020

SURREY HAS HELPED
ME HAVE **new**
experiences

HAYA FROM KUWAIT

STUDIED ENGINEERING AND PHYSICAL SCIENCES INTERNATIONAL FOUNDATION YEAR. PROGRESSED TO BENG (HONS) IN CIVIL ENGINEERING

"I really loved Surrey at the start, and I still do. I love how the classes are small and it helped you integrate into university life.

Studying in Surrey has helped me have new experiences that will help me in the future. It has helped me get used to university life. The experiences and the opportunities that I have had here, especially getting to meet different people from around the world, will help me later on in my work."



The Duke of Kent building



Shopping in Guildford



Guildford Castle



1st

UK UNIVERSITY TO
INTRODUCE
PROFESSIONAL
TRAINING
PLACEMENTS

FANTASTIC LOCATION

The University's tranquil lakeside campus is located within sight of the lovely Surrey Hills, an Area of Outstanding Natural Beauty. You will live and study in green and peaceful surroundings, with the town of Guildford easily accessible and central London less than 40 minutes away by train.

The campus is a friendly, vibrant and safe place where you can make the most of student life. At the Students' Union and throughout the campus you will find a range of places to eat, relax and socialise with your friends.

State-of-the-art facilities on campus include Surrey Sports Park, the Ivy Arts Centre and the new Library and Learning Centre.

PROFESSIONAL FOCUS

Professional Training placements are available to nearly all undergraduate University of Surrey students. The University works with over 2,300 high-profile partner organisations to offer students real-world, professional work experience.

By participating, you can gain industry experience that will complement your studies and help you stand out in the competitive graduate employment market.

This pioneering work-experience programme, which now also includes a number of extended masters degrees that include a work placement, is admired by universities around the world and reflects Surrey's commitment to outstanding graduate employability.

PATHWAY TO SUCCESS

Our programmes consist of academic subjects, study skills and English language training designed specifically to provide international students with a pathway to degree study at the University of Surrey.

Tutors on our programmes are experts in their subjects and specialists in university preparation.

We will support you every step of the way to help you successfully complete your programme and progress to your chosen degree at Surrey.

You will then join a university that delivers consistently outstanding teaching, learning and outcomes for its students. It is of the highest quality found in the UK, as judged by the TEF panel.



7th

IN THE TIMES HIGHER
EDUCATION STUDENT
EXPERIENCE
SURVEY 2018

TOP-RANKED DEGREE PROGRAMMES

In recent years, Surrey has established itself as a top-ten university in many subject areas across the major UK league tables.

The Guardian University Guide 2020 ranked the University an impressive second for Music, Criminology, and Engineering: Electronic and Electrical. Surrey is also ranked in the top-twenty for Hospitality and Tourism, Chemistry, Biosciences and Psychology.

Consistently high rankings reflect Surrey's quality teaching, cutting edge facilities and world-leading research.

FIRST-CLASS STUDENT EXPERIENCE

University of Surrey students are among the most satisfied in the UK. In 2016, Surrey was named University of the Year by The Times and Sunday Times Good University Guide as well as University of the Year for Student Experience.

Surrey also had an impressive 8 subject areas ranked in the top 10 in the National Student Survey 2018, where final-year undergraduate students had the opportunity to feedback on their experience of their course of study.

Teaching, academic support, learning resources, facilities and personal development are some of the key areas contributing to this award.

HIGHLY EMPLOYABLE GRADUATES

The University of Surrey has a proven track record in producing successful graduates who are well-qualified, professional and most importantly, highly employable.

The university is well known for a focus on graduate employability, and according to Higher Education Statistics Agency figures, 94 per cent of 2017 graduates were in work or further study six months after they graduated. These excellent figures are a result of the University's focus on career preparation and the success of Surrey's Professional Training placements.

The University of Surrey is ranked 1st in the UK by QS World Employability Rankings 2020 for work placements and research partnerships with employers.



Beautiful campus



Practical projects in top class facilities



Cafés on campus



The Library

£36
million

SURREY SPORTS
PARK

World-class facilities

▶ ▶ ▶ FROM THE DAY YOU START YOUR PROGRAMME AT THE INTERNATIONAL STUDY CENTRE YOU WILL BE PART OF THE UNIVERSITY AND CAN ENJOY ACCESS TO ALL OF SURREY'S WONDERFUL CAMPUS FACILITIES. YOU CAN STUDY IN THE CUTTING-EDGE LIBRARY AND LEARNING CENTRE, STAY FIT AT SURREY SPORTS PARK OR SOCIALISE IN THE STUDENTS' UNION.

SMARTER STUDY SPACES

The Library and Learning Centre provides the University of Surrey with a study centre that you expect at a leading university. Over the last five years, around £16 million has been invested to offer Surrey students a first-rate, modern study space.

From the Library, you can explore hundreds of thousands of books and journals – physical and electronic – as well as audio and image collections.

The Library and Learning Centre is also home to the University's AppleSeed Bookshop.

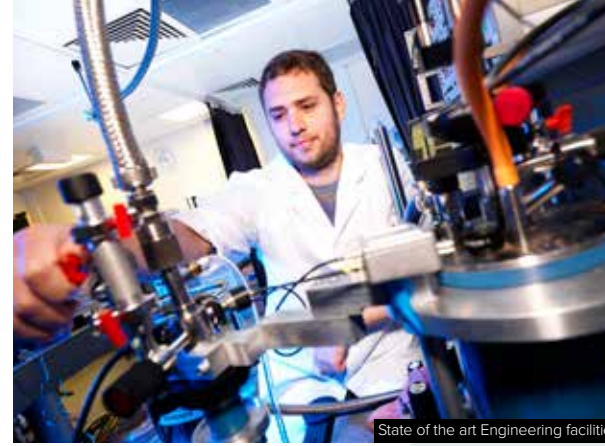
The MySurrey Hive provides students a space to socialise and study with their classmates. Staff and volunteers at the Hive can offer students support and advice on a range of issues they may face during their studies, including accommodation, finance, visas and careers.

SPLASH

The Student Personal Learning and Study Hub (SPLASH) is a student-centred area within the Library designed to enhance your studies. Information Skills Librarians work from SPLASH, offering advice on finding resources, using databases and referencing.

To support your academic and personal development, Student Learning Advisers can assist you in improving your writing, presenting, revision, time management or any other academic skills.

SPLASH also supports the Surrey's Top Achievers Recognised and Supported (STARS) programme for outstanding students targeting first-class honours.



State of the art Engineering facilities



The swimming pool at Surrey Sports Park



5G Innovation Centre



MySurrey Hive



The library

SURREY SPORTS PARK

The £36 million Surrey Sports Park is one of Europe's leading sports venues and the home of Team Surrey.

University of Surrey students benefit from discounted membership to Surrey Sports Park, giving you access to facilities, classes and activities, and the opportunity to join over 40 student sports clubs.

EVERYTHING YOU NEED, RIGHT ON CAMPUS

On the main Stag Hill campus, there is a wide range of amenities, including modern launderettes, a post office, bank, bookshop, grocery store and newsagent.

Large supermarkets and a halal grocery store can be found nearby, and a weekly fruit and vegetable market is also held on campus.

Research excellence



Research on electromobility



Aviation student using flight simulator



The Advanced Technology Institute building



Aerospace Engineering practical work



Mechanical Engineering student working on a project in the human movement lab



Guildford School of Acting building



Space satellite technology

▶ THE UNIVERSITY OF SURREY PRIDES ITSELF ON DELIVERING WORLD-CLASS RESEARCH, RISING TO GLOBAL CHALLENGES, DRIVING INNOVATION AND DELIVERING REAL-WORLD IMPACT.

STATE OF THE ART RESEARCH FACILITIES

The University of Surrey is a research-led institution dedicated to being the best at the application of research to benefit a global society.

Surrey's 5G Innovation Centre is the world's largest academic research centre dedicated to the next generation of mobile and wireless connectivity.

The newest addition to campus, the STEM building, is a state-of-the-art facility for Science, Technology, Engineering and Mathematics study, with laboratories, open plan learning space and seminar rooms.

Your future

▶ ▶ ▶ FIRST UK UNIVERSITY TO INTRODUCE PROFESSIONAL TRAINING PLACEMENTS

The University's Employability and Careers team will help you prepare for your placement, giving you the professional and personal skills you need to succeed. The majority of placements are paid, and you'll be supported every step of the way, whatever kind of placement you decide to pursue. Surrey students have recently completed Professional Training placements with organisations such as Virgin Trains and Goldman Sachs.

39%

OF STUDENTS WHO DID A PLACEMENT WERE OFFERED A JOB WITH THE EMPLOYER AFTER GRADUATION (2017/18)

2,300+

HIGH PROFILE WORKPLACE PARTNERS



Business Management students on placement

1st

IN UK FOR WORK PLACEMENTS AND RESEARCH PARTNERSHIPS (QS WORLD EMPLOYABILITY RANKINGS 2020)



THE LAKESIDE RESTAURANT AND CAFÉ SHOP

In addition to placements, the on-campus restaurant and café both provide training environments for the School's International Hospitality Management students.

In the restaurant, under the expert guidance of Lakeside's professional team, the students are given full responsibility to manage the restaurant, plan menus, implement marketing strategies, manage budgets, produce and serve the finest seasonal dishes, fresh to order.



Professional Training Year at Virgin Trains



Student on Professional Training Year, at Goldman Sachs



CATHERINE FROM NIGERIA

STUDIED BUSINESS, ECONOMICS, LAW AND SOCIAL SCIENCES INTERNATIONAL FOUNDATION YEAR PROGRESSED TO BSC ECONOMICS

"I did my placement at BP headquarters in London, and I was an economics research assistance in the economics team.

My task as an economics research assistant at BP varied widely, where I had to work on projects, including the annual BP Statistical Review and BP Energy Outlook.

I think my placement year has really developed me a lot professionally, academically, and also made me more responsible."

OUR PLACEMENT PARTNERS INCLUDE

- Airbus
- BAE Systems
- Bank of England
- British Council
- British Geological Survey
- CERN
- Cisco Systems
- EDF Energy
- Electronic Arts
- Ericsson
- Fluor
- GlaxoSmithKline
- Hewlett-Packard
- Hilton Hotels
- HSBC
- IBM
- Intel
- Ipsos MORI
- Jaguar Land Rover
- L'Oréal
- London Symphony Orchestra
- McLaren
- Metropolitan Police
- Microsoft
- NBC Universal
- Nintendo of Europe
- Nissan
- Saudi Aramco Oracle
- Sky UK
- Sony
- Thales
- The Walt Disney Company
- Toyota
- Transport for London
- Unilever
- Volkswagen
- Xerox
- Yakult



The International Study Centre

▶▶▶ IF YOU WANT TO STUDY AT THE UNIVERSITY OF SURREY, OUR PATHWAY PROGRAMMES PROVIDE A ROUTE TO YOUR DEGREE AND TO A REWARDING CAREER BEYOND.

SUCCESS STARTS HERE

The International Study Centre is at the heart of the campus, giving you the opportunity to live and learn with students from all over the world. You will be part of the University's friendly and academically distinguished community.

UNIVERSITY-STYLE TEACHING

Each programme introduces you to the UK-style of teaching that will be used during your degree. You will participate in tutorials, seminars and lectures. All of our tutors are highly experienced and experts in their field. By the end of the programme, you will have the skills and knowledge you need to feel confident about starting your degree at Surrey.

Preparation for the future

94%

GRADUATES IN EMPLOYMENT OR FURTHER STUDY AFTER 6 MONTHS (HESA 2017)

▶▶▶ UNIVERSITY OF SURREY HAS AN EXCELLENT RECORD FOR GRADUATE EMPLOYABILITY. THIS IS THANKS TO THE EMPLOYABILITY AND CAREERS CENTRE, EXCELLENT WORK EXPERIENCE OPPORTUNITIES AND THE HARD WORK OF OUR STUDENTS.

By doing both a pathway and then a degree at the university you will benefit from

- The CareerAhead programme at the International Study Centre
- The University's Employability and Careers Centre
- Professional Training placements

CAREER AHEAD

We know that you may already be thinking about your future career, which is why we have integrated a careers and employability skills element into our programmes at the International Study Centre. CareerAhead will guide you and give you the tools you need to impress in a competitive graduate job market.

EMPLOYABILITY AND CAREERS CENTRE

The Employability and Careers Centre offers careers information, advice and guidance throughout all the stages of the student journey after starting at the University. This is also extended to alumni for three years after leaving the University of Surrey.

PROFESSIONAL TRAINING PLACEMENTS

Students who complete the International Foundation Year and begin an undergraduate degree will have the opportunity to gain work and industry experience on a Professional Training placement. No other university anywhere in the world has a work placement programme like the University of Surrey.

Partnerships with over 2,300 of the world's leading employers, such as IBM, HSBC and British Airways, have been built to give you real-world professional experience. Some students spend their placements with a UK company or organisation and others have the opportunity to go to Europe or beyond. 39% of students who take part in a placement training year are offered a job to come back to when they complete their degree.

International Foundation Year

▶▶▶ THE INTERNATIONAL FOUNDATION YEAR IS A PROGRAMME OF ACADEMIC SUBJECTS, STUDY SKILLS AND ENGLISH LANGUAGE TRAINING DESIGNED SPECIFICALLY FOR AMBITIOUS INTERNATIONAL STUDENTS SEEKING TO JOIN THE UNIVERSITY OF SURREY.

Successful completion of your International Foundation Year programme is the pathway to an undergraduate degree from one of the UK's most prestigious universities.

INTERNATIONAL FOUNDATION YEAR ESSENTIALS

You can begin your International Foundation Year in either September or February. When you join the International Study Centre, you will receive a conditional offer letter of a degree place at the University of Surrey. You can progress onto your chosen degree the following September when you have achieved the required progression criteria.

You can choose one of three routes:

- Business, Economics, Law and Social Sciences
- Engineering and Physical Sciences
- Life Sciences

ASSESSMENT

A variety of assessment methods are used to test both your skills development and your content knowledge. These assessments can take the form of written exams, essays, lab reports, case studies, presentations, and others.

Please visit isc.surrey.ac.uk for full and up-to-date progression criteria details.

PROGRESSION CRITERIA

You will need to achieve an overall average of 65 - 70 per cent or above. Once you have completed your International Foundation Year and meet the appropriate entry requirements, you can progress to the degree of your choice.

We will support you throughout your International Foundation Year to make sure you achieve your best and progress successfully to your studies at Surrey.

ENTRY REQUIREMENTS:

Academic: Good high school graduation grades or equivalent.

English language: Business, Economics, Law and Social Sciences: IELTS 5.5 (minimum 5.0 in all components) or equivalent.

Engineering and Physical Sciences: IELTS 5.0 (minimum 5.0 in writing) or equivalent.

Life Sciences: IELTS 5.5 (minimum 5.0 in all components) or equivalent.

Entry points: September and February.

Course length: September to June, or February to September.

Age on entry: For up-to-date admissions information and entry requirements, including age on entry, please visit isc.surrey.ac.uk

ALINA FROM RUSSIA

STUDIED INTERNATIONAL FOUNDATION YEAR IN BUSINESS, ECONOMICS, LAW AND SOCIAL SCIENCES

"I am getting the full experience here at Surrey. People are very supportive, the staff are very helpful, and there are opportunities to get involved with what's happening. Open your mind to everything that the University and the people here offer you.

If you are scared of taking a subject, maybe it is the right thing to just try it. Studying the International Foundation Year at Surrey is the opportunity for you to test yourself, to see your strengths, to see your weaknesses, to learn more about yourself and about people who surround you. I feel like I'm a part of a community which highlights my strengths and help me to tackle any weaknesses."

I'M A PART OF A
community
WHICH HIGHLIGHTS MY STRENGTHS

Ranked 2nd
FOR CRIMINOLOGY IN 2020

PROFESSIONAL
**Training
placement**
OPPORTUNITIES AVAILABLE

PARTNERSHIPS WITH
**2,300
employers**



BUSINESS, ECONOMICS, LAW AND SOCIAL SCIENCES

THE BUSINESS, ECONOMICS, LAW AND SOCIAL SCIENCES ROUTE PROVIDES THE SUBJECT KNOWLEDGE, LANGUAGE PROFICIENCY AND STUDY SKILLS YOU NEED TO PROGRESS TO UNDERGRADUATE STUDY AT THE UNIVERSITY OF SURREY IN A RELATED FIELD.

During your International Foundation Year you will study two core modules and two elective modules, which are carefully designed to focus on the academic areas most relevant to your chosen degree.

You will gain an understanding and appreciation of the nature and scope of business and the role of business in society.

If you choose an elective in Economics you will also gain an introduction to the principles, concepts and models of micro-economic and macro-economic analysis.

If you choose an elective module in Sociology, you will be introduced to the main sociological theories and perspectives and their contribution to the study of society and social change.

If you choose an elective unit in Law, you will learn about the English legal system and the issues relating to business law within the UK and the EU.

If you choose an elective unit in Accounting, you will gain an understanding of the role of accounting in business, the importance of maintaining accurate financial records and the need for financial information for monitoring and controlling the performance of an organisation.

CORE MODULES

ACADEMIC ENGLISH SKILLS

Academic English Skills aims to provide you with thorough training in language and related academic skills, enabling you to best achieve your academic potential at University. These skills include the processes of academic writing, effective and extensive reading strategies, effective participation in seminars and delivery of presentations, and listening to and recording information effectively from lectures. You will also develop the accuracy and range of written and spoken language required to use language effectively and appropriately, with clarity and confidence in an academic context.

BUSINESS STUDIES 1 & 2

These modules will provide an understanding of the nature and scope of business in society. You will look at the key issues facing new business and best management processes with modules focussed on effective management and corporate social responsibility.

ELECTIVE MODULES

ACCOUNTING 1 & 2

During these modules you will learn about the role of accounting in business and the need for financial information. You will learn about the different formats for presenting accounting information and the regulatory framework for presenting accounting information.

ECONOMICS 1 & 2

These modules will introduce you to the basics of economics, from the behaviour of individuals to the national and global economy. Students will gain a better understanding of free market and the role of government in economy.

LAW 1 & 2

In these modules you will look at the core principles, rules, concepts and structure of the English Legal System, Contract Law, Consumer Protection and the Tort of Negligence. These modules will provide an understanding of how to cite legal authority and use legal reasoning to analyse problems.

SOCIOLOGY 1 & 2

During these modules you will learn about the core aspects of society as culture, family, religion and education. The main sociological theories and perspectives and their contribution to the study of society and social change, as well examining global development, political power and institutions, mass media, crime and punishment.

THE GUARDIAN UNIVERSITY GUIDE 2020 TOP 10 RANKINGS

Subject	Rank
Criminology	2nd
Modern Languages and Linguistics	6th

For more information, including a complete and up-to-date list of progression degrees and entry requirements, please visit

isc.surrey.ac.uk

All progression degrees from this pathway include the option to complete a Professional Training Year as part of your degree. The Professional Training Year takes place in year three of a four year sandwich degree. If you would like to take a Professional Training Year you will be able to select this option while at the International Study Centre before you progress to the University. The University of Surrey will provide guidance and support in year one and two in helping you to secure a suitable placement. Please note the Placement Year is optional and is not guaranteed.

Admissions enquiries

T: +44 (0)1273 339333 isc.surrey.ac.uk/apply

PROGRESSION DEGREES

Upon successful completion of your programme, you can progress directly to one of the following degree programmes at the University of Surrey:

BSc (Hons) Accounting and Finance	BA (Hons) International Relations
BMus (Hons) Creative Music Technology	BSc (Hons) International Tourism Management
BSc (Hons) Business and Retail Management	LLB (Hons) Law
BSc (Hons) Business Economics	LLB (Hons) Law with Criminology
BSc (Hons) Business Management	LLB (Hons) Law with International Relations
BSc (Hons) Business Management (Entrepreneurship)	BSc (Hons) Media and Communication
BSc (Hons) Business Management (Human Resource Management)	BA (Hons) Modern Languages (French and Spanish)
BSc (Hons) Business Management (Marketing)	BA (Hons) Modern Languages (French with German)
BSc (Hons) Business Management and French	BA (Hons) Modern Languages (Spanish with German)
BSc (Hons) Business Management and Spanish	BMus (Hons) Music
BSc (Hons) Criminology	BA (Hons) Politics
BSc (Hons) Criminology and Sociology	BSc (Hons) Politics and Economics
BSc (Hons) Economics	BSc (Hons) Politics and Sociology
BSc (Hons) Economics and Finance	BSc (Hons) Psychology
BSc (Hons) Economics and Mathematics	BSc (Hons) Sociology

.....
Please note there may be additional entry criteria and/or an audition or interview may be required for entry onto the following programmes: Music, Creative Music Technology, Musical Theatre, Acting, Actor-Musician, Theatre Production, Tonmeister, Film and Video Production Technology, English Literature programmes and programmes involving a language. Applicants for Musical Theatre, Acting and Actor-Musician are also required to pay an audition fee.

Please visit isc.surrey.ac.uk for further information.

BSc (Hons) International Hospitality Management

93%

OF SURREY STUDENTS IN
WORK OR FURTHER STUDY 6
MONTHS AFTER GRADUATING

PROFESSIONAL

**Training
placement**

OPPORTUNITIES AVAILABLE

OVER

£16 million

INVESTED IN OUTSTANDING
LEARNING FACILITIES OVER
THE LAST 5 YEARS

91%

OF STUDENTS ON
THIS PATHWAY WHO COMPLETE
THEIR COURSE WERE OFFERED
A PLACE AT THE UNIVERSITY
IN 2018

ENGINEERING AND PHYSICAL SCIENCES

THE ENGINEERING AND PHYSICAL SCIENCES ROUTE LEADS TO A WIDE RANGE OF DEGREES IN ENGINEERING, SCIENCE AND MATHEMATICS-RELATED SUBJECTS AT THE UNIVERSITY OF SURREY.

In Engineering and Physical Sciences you will take the core modules with subject-specific modules; depending on your chosen degree – Physics or Chemistry.

Use of calculus, focusing on functions, derivatives and integrals and their application in the 'real world' is a major part of mathematics. The fundamentals of physics will prepare you for progression onto a degree course in science or engineering. In the Chemistry unit you will study formulae, equations and moles, atomic structure, chemical bonding, redox reactions and thermodynamics.

CORE MODULES

ACADEMIC ENGLISH SKILLS

Academic English Skills aims to provide you with thorough training in language and related academic skills, enabling you to best achieve your academic potential at University. These skills include the processes of academic writing, effective and extensive reading strategies, effective participation in seminars and delivery of presentations, and listening to and recording information effectively from lectures. You will also develop the accuracy and range of written and spoken language required to use language effectively and appropriately, with clarity and confidence in an academic context.

APPLIED MATHEMATICS 1 & 2

During these modules you will study the relationship between real life situations and mathematical models. You will learn about friction, energy and power, while working to deepen your understanding of the role of mathematics in the world.

PURE MATHEMATICS 1 & 2

In these modules you will develop your knowledge of algebra and calculus while learning about functions, derivatives and integrals, sketching graphs and applying mathematical facts to real world problems.



SUBJECT SPECIFIC MODULES

CHEMISTRY 1 & 2

These modules introduce you to formulae, equations and moles, atomic structure, introduction to redox systems, thermodynamics and bonding. You will also cover equilibria, acid-based equilibria, kinetics and organic chemistry.

PHYSICS 1 & 2

In these modules you will study the fundamentals of physics by looking at sound, electromagnetic waves and the structure of the atom. You will also cover electrical currents and magnetic fields.

.....
All progression degrees listed on this page will require students to take Physics 1 & 2 subject specific modules, unless they are marked with* where they will be required to take Chemistry 1 & 2 subject specific modules or those marked with* where students are able to choose which subject specific modules they take.

THE GUARDIAN UNIVERSITY GUIDE 2020 TOP 10 RANKINGS

Subject	Rank
Engineering: Electronic and Electrical	2nd
Chemistry	8th

For more information, including a complete and up-to-date list of progression degrees and entry requirements, please visit isc.surrey.ac.uk

PROGRESSION DEGREES

Upon successful completion of your programme, you can progress directly to one of the following degree programmes at the University of Surrey:

- BEng (Hons) Aerospace Engineering
- BEng (Hons) Automotive Engineering
- BEng (Hons) Chemical and Petroleum Engineering*
- BEng (Hons) Chemical Engineering*
- BSc (Hons) Chemistry*
- BEng (Hons) Civil Engineering
- BEng (Hons) Computer and Internet Engineering
- BSc (Hons) Computer Science
- BSc (Hons) Computing and Information Technology
- BEng (Hons) Electrical and Electronic Engineering
- BEng (Hons) Electronic Engineering
- BEng (Hons) Electronic Engineering with Computer Systems
- BEng (Hons) Electronic Engineering with Nanotechnology*
- BEng (Hons) Electronic Engineering with Space Systems
- BSc (Hons) Financial Mathematics*
- BSc (Hons) Mathematics
- BSc (Hons) Mathematics and Physics
- BSc (Hons) Mathematics with Music
- BSc (Hons) Mathematics with Statistics
- BEng (Hons) Mechanical Engineering
- BSc (Hons) Music and Sound Recording (Tonmeister)
- BSc (Hons) Physics
- BSc (Hons) Physics with Astronomy
- BSc (Hons) Physics with Nuclear Astrophysics
- BSc (Hons) Physics with Quantum Technologies

All BEng (Hons) degrees listed are also available as MEng progression degree route

.....
All degrees listed include the option to complete a Professional Training Year as part of your degree. The Professional Training Year takes place in year three of a four year sandwich degree. If you would like to take a Professional Training Year you will be able to select this option while at the International Study Centre before you progress to the University. The University of Surrey will provide guidance and support in year one and two in helping you to secure a suitable placement. Please note the Placement Year is optional and is not guaranteed.

Please note there may be additional entry criteria and an interview may be required for entry onto Music and Sound recording (Tonmeister) BSc.

Admissions enquiries

T: +44 (0)1273 339333 isc.surrey.ac.uk/apply

PROFESSIONAL
**Training
placement**
OPPORTUNITIES AVAILABLE

OVER
£16 million
INVESTED IN OUTSTANDING
LEARNING FACILITIES OVER
THE LAST 5 YEARS

PARTNERSHIPS WITH
2,300
EMPLOYERS

LIFE SCIENCES

THE LIFE SCIENCES ROUTE LEADS TO A WIDE RANGE OF DEGREES IN BIOLOGY AND CHEMISTRY-RELATED SUBJECTS AT THE UNIVERSITY OF SURREY.

In Life Sciences you will study the core modules relevant to your chosen degree – Chemistry, Biology, Core Maths and Statistics.

Mathematics requires you to recall arithmetic facts needed in this pathway, whilst further developing your knowledge of algebra, solving equations and using graphs to represent your findings.

The Statistics module consolidates and advances your application of concepts in statistical mathematics, including probability, hypothesis testing, sampling and estimation. You will develop understanding of Biology with the aid of laboratory investigations as you explore the unit of life, molecules, cellular processes, enzymes and cell recognition.

In Chemistry you will be introduced to formulae, equations and moles, atomic structure, chemical bonding, redox reactions and thermodynamics.

CORE MODULES

ACADEMIC ENGLISH SKILLS

Academic English Skills aims to provide you with thorough training in language and related academic skills, enabling you to best achieve your academic potential at university. These skills include the processes of academic writing, effective and extensive reading strategies, effective participation in seminars and delivery of presentations, and listening to and recording information effectively from lectures. You will also develop the accuracy and range of written and spoken language required to use language effectively and appropriately, with clarity and confidence in an academic context.

BIOLOGY 1 & 2

These modules will encourage students to develop their interest in biology through study of the molecules of life, cellular processes, energy systems, genetics and systems of life in plants and animals.

CHEMISTRY 1 & 2

You will study formulae, equations and moles, atomic structure, chemical bonding, redox reactions and thermodynamics. These modules will also cover chemical equilibria, acid-base equilibria, reaction kinetics and topics in organic chemistry.

CORE MATHS & STATISTICS

In these modules you will learn to recall arithmetic concepts, develop your knowledge of algebra and calculus and deepen your understanding of the role of mathematics in the world. You will study the use of graphs in solving equations, derivatives and integrals and concepts of statistical mathematics.

THE TIMES AND SUNDAY TIMES GOOD UNIVERSITY GUIDE 2020 TOP 10 RANKINGS

Subject	Rank
Food science	2nd
Sport science	9th

THE GUARDIAN UNIVERSITY GUIDE 2020 TOP 10 RANKINGS

Subject	Rank
Chemistry	8th
Bio-sciences	8th

For more information, including a complete and up-to-date list of progression degrees and entry requirements, please visit isc.surrey.ac.uk

Admissions enquiries

T: +44 (0)1273 339333 isc.surrey.ac.uk/apply

PROGRESSION DEGREES

Upon successful completion of your programme, you can progress directly to one of the following degree programmes at the University of Surrey:

- BSc (Hons) Biochemistry
- BSc (Hons) Biological Sciences
- BEng (Hons) Biomedical Engineering
- BSc (Hons) Biomedical Science
- BVMSci (Hons) Veterinary Medicine and Science
- BSc (Hons) Chemistry
- BSc (Hons) Chemistry with Forensic Investigation
- BSc (Hons) Food Science and Nutrition
- BSc (Hons) Medicinal Chemistry
- BSc (Hons) Microbiology
- BSc (Hons) Nutrition
- BSc (Hons) Nutrition and Dietetics
- BSc (Hons) Sports and Exercise Science
- BSc (Hons) Veterinary Biosciences

.....
All degrees listed include the option to complete a Professional Training Year as part of your degree. The Professional Training Year takes place in year three of a four year sandwich degree. If you would like to take a Professional Training Year you will be able to select this option while at the International Study Centre before you progress to the University. The University of Surrey will provide guidance and support in year one and two in helping you to secure a suitable placement.

Please note the Placement Year is optional and is not guaranteed. Please note there are additional entry and progression requirements, including an interview for BSc (Hons) Nutrition & Dietetics and BVMSci Veterinary Medicine and Science.

Please visit isc.surrey.ac.uk/programmes/international-foundation-year/life-sciences for full details

ABDULLA FROM BAHRAIN

“The International Study Centre was the start of my time at the University of Surrey. Basically, they prepared me for all the work we were going to get in the first year and that helped a lot.”

THERESA FROM NIGERIA

STUDIED INTERNATIONAL FOUNDATION YEAR IN ENGINEERING AND PHYSICAL SCIENCES PROGRESSED TO BA (HONS) ELECTRONIC ENGINEERING AND COMMUNICATIONS.

“The main reason I wanted to come to the UK was because the quality of education is really good.

The International Study Centre helped me learn what to expect in the British education system. I liked that it was in the University, and yet not in University. I had friends at the University, so I could talk to them about what to expect and what to look out for.”



THE INTERNATIONAL STUDY CENTRE HELPED ME

learn WHAT TO EXPECT

English Language Preparation

► ► ► OUR ENGLISH LANGUAGE PREPARATION PROGRAMME PROVIDES SPECIALIST TEACHING AND SUPPORT TO HELP YOU ACHIEVE THE NECESSARY ENGLISH LANGUAGE LEVEL TO START YOUR INTERNATIONAL FOUNDATION YEAR PROGRAMME WITH CONFIDENCE.

COURSE LENGTH:

If you are taking an International Foundation Year in Business, Economics, Law and Social Sciences or Life Sciences, you can take one or two semesters of English Language Preparation. If you have IELTS 5.0 (4.5 in all bands) or equivalent, you will need one semester of English Language Preparation. If you have IELTS 4.5 (4.0 in all bands) or equivalent, you will need to complete our two semester English Language Preparation programme.

If you are taking an International Foundation Year in Engineering and Physical Sciences and have IELTS 4.5 (4.0 in all bands) or equivalent, you will need to complete our one semester English Language Preparation programme.

INTAKE DATES:

This course has two start dates, depending when you begin your International Foundation Year.

One-semester programme

- June, prior to starting your academic programme in September
- September, prior to starting your academic programme in February.

Two-semester programme

We are pleased to offer a two-semester English programme to students starting an International Foundation Year in Business, Economics, Law and Social Sciences and an International Foundation Year in Life Sciences. This course has one start date:

- June, prior to starting your academic programme in February

IELTS REQUIREMENT**	SEMESTERS	JUN - SEP	SEP - FEB	FEB - JUN	JUN - SEP	SEPT
4.5 (4.0 in all skills)	4	ELP		IFY		Progress to your degree*
5.0 (4.5 in all skills)	3	ELP	IFY		Vacation	
5.0 (4.5 in all skills)	3		ELP	IFY		
5.5 (5.0 in all skills)	2		IFY		Vacation	
5.5 (5.0 in all skills)	2			IFY		

■ ELP English Language Preparation ■ IFY International Foundation Year

*Progression will be dependent on reaching the required grades. For a full and up-to-date list of degrees available and the grades required, visit isc.surrey.ac.uk

Table shows details for the Business, Economics, Law and Social Sciences International Foundation Year and Life Sciences International Foundation Year only. For International Foundation Year in **Engineering and Physical Sciences, a one-semester ELP is available; you will need an **IELTS 4.5 (minimum 4.0 in all subskills)** or equivalent to start this programme. For **Engineering and Physical Sciences** you will also only require **IELTS 5.0 (minimum 5.0 in writing)** or equivalent to join the 2-semester International Foundation Year.

The English language entry requirements stated are for information regarding entry to the course. If you require a UK visa to study, depending on the type of visa you need, the English language requirements and valid English tests to satisfy the UK visa criteria may differ. If you do not need a Tier 4 visa, or are exempted in another way, we can accept equivalent proof of English.

Pre-Masters Programme

▶ ▶ ▶ THIS COURSE IS AN INTENSIVE ONE OR TWO-SEMESTER PROGRAMME OF ACADEMIC SUBJECTS, STUDY SKILLS AND ENGLISH LANGUAGE PREPARATION. IT HAS BEEN DESIGNED SPECIFICALLY TO PREPARE YOU FOR STUDY AT THE UNIVERSITY. SUCCESSFUL COMPLETION OF THE PRE-MASTERS PROGRAMME IS THE PATHWAY TO A POSTGRADUATE DEGREE FROM ONE OF THE UK'S MOST PRESTIGIOUS UNIVERSITIES.

PRE-MASTERS PROGRAMME ESSENTIALS

You can begin your Pre-Masters Programme in either September or February. When you join the International Study Centre, you will receive a conditional offer letter of a degree place at the University of Surrey. You can progress onto your chosen degree at the next intake date, when you have achieved the required progression criteria.

YOU CAN CHOOSE ONE OF THREE ROUTES:

- Management, Finance, Hospitality and Tourism
- Engineering
- Health and Medical Sciences

ENGLISH FOR PRE-MASTERS

Depending on your level of English you have the option of one or two semesters of English Language prior to beginning your academic programme (see page 34 for more details).

LEO FROM CHINA

STUDIED PRE-MASTERS PROGRAMME IN MANAGEMENT, FINANCE AND ECONOMICS, PROGRESSED TO MSC INTERNATIONAL BUSINESS MARKETING

"Studying at the ISC is a very good opportunity to enrich yourself before you go into a Masters course. For international students especially I think this is a very necessary step. Teachers are really nice. They give tutorials almost every week to give feedback and they point out what you need to improve, but they also encourage you to keep going at what you're good at."

A VERY GOOD OPPORTUNITY TO

enrich yourself

BEFORE YOU GO INTO A MASTERS COURSE

STUDY PLANS

IELTS REQUIREMENT**	SEMESTERS	JUNE - AUG	SEPT-FEB	FEB - JUNE	JUNE - AUG	SEPT
4.5 (4.5 in all skills)	4	English for Pre-Masters		Pre-Masters Programme		Progress to your degree*
5.0 (5.0 in all skills)	3	English for Pre-Masters	Pre-Masters Programme		Vacation	
5.0 (5.0 in all skills)	3		English for Pre-Masters	Pre-Masters Programme		
5.5 (5.5 in all skills)	2		Pre-Masters Programme		Vacation	
5.5 (5.5 in all skills)	2			Pre-Masters Programme		
6.0 (6.0 in writing and 5.5 all in other skills)	1			Pre-Masters Programme		

■ English for Pre-Masters ■ Pre-Masters Programme

*Progression will be dependent on reaching the required grades. For a full and up-to-date list of degrees available and the grades required, visit isc.surrey.ac.uk

**The English language entry requirements stated are for information regarding entry to the course. If you require a UK visa to study, depending on the type of visa you need, the English language requirements and valid English tests to satisfy the UK visa criteria may differ. If you do not need a Tier 4 visa, or are exempt in another way, we can accept equivalent proof of English.

For entry to the Pre-Masters Programme we now accept a wide range of IELTS equivalent qualifications as part of the English assessment for students joining from September 2019 onwards.

These include Pearson, TOEFL, Cambridge Business and Cambridge Main Suite.

► MANAGEMENT, FINANCE, HOSPITALITY AND TOURISM

THE MANAGEMENT, FINANCE, HOSPITALITY AND TOURISM PRE-MASTERS PROGRAMME PROVIDES THE SUBJECT KNOWLEDGE, LANGUAGE PROFICIENCY AND STUDY SKILLS YOU NEED TO PROGRESS TO POSTGRADUATE STUDY IN A RELATED FIELD AT THE UNIVERSITY OF SURREY.

During the programme you will study a core unit of general subject skills and subject-specific units, which are carefully designed for your academic development.

ONE-SEMESTER COURSE MODULES

ACADEMIC ENGLISH SKILLS

Academic English Skills aims to provide you with thorough training in language and related academic skills, enabling you to best achieve your academic potential at University. These skills include the processes of academic writing, effective and extensive reading strategies, effective participation in seminars and delivery of presentations, and listening to and recording information effectively from lectures. You will also develop the accuracy and range of written and spoken language required to use language effectively and appropriately, with clarity and confidence in an academic context.

CONTEMPORARY ISSUES IN BUSINESS MANAGEMENT

The aim of this module is to provide students with the background, knowledge and skills to enable them to enhance their commercial awareness and business communication skills by studying contemporary business issues and underscoring how these issues impact on business practices and performance.

Students will be provided the opportunity to understand key business and management concepts and the ability to develop research skills in a business and management context.

The module provides a clear and comprehensive understanding of the latest thinking, behavioural practices and management functions within contemporary businesses and their impact on performance.

RESEARCH SKILLS FOR MASTERS

This capstone module is designed to promote the integration of knowledge and skills acquired across the Management, Finance and Hospitality Pre-Masters Programme, leading to assessments which demonstrate the culmination of this process.

Students will deepen their knowledge and develop their ability to critically analyse theories related to their chosen discipline through rigorous exploration of reliable secondary resources. The module also prepares students to submit a literature review, including an executive summary, within the framework of a Masters degree. Finally, it is designed to foster a process of critical reflection and active self-management in the learning and research cycles during the Pre-Masters Programme.

FINANCE & INVESTMENT MANAGEMENT (ELECTIVE MODULE)

The main aim of the module is to introduce students to concepts relating to financing and investment decision making and to equip them with a range of models for managerial decision-making. The module also introduces students to theories relating to financing and investment decision-making

and deals with how these theories might differ from what happens in practice. Students will understand the importance of financial management and investment models in the decision-making processes for financial managers.

This module provides students with the knowledge and skills of applying a variety of financial tools to construct, rebalance and evaluate a portfolio consisting of financial assets mainly equities. Students will be exposed to a wide range of techniques for use in rebalancing, comparing and analysing financial assets and applying learned techniques of inquiry in their chosen specialism.

THE INTERNATIONAL VISITOR ECONOMY (TRAVEL, TOURISM, HOSPITALITY AND EVENTS) (ELECTIVE MODULE)

This module aims to provide students with an understanding of the visitor economy from an international perspective and the principles and practices of sustainability within industry; the main theoretical focus being on consumer theory and business behaviour.

With this knowledge and understanding, students will be able to develop a framework for recognising sustainable tourism, hospitality and events operations in the context of an international market; focusing in particular on mission, ethics, strategic direction and competitive advantage.



Throughout the module, key challenges facing the industry will be explored to enable students to gain a clear understanding of the current and possible future considerations relating to the International Visitor Economy.

ADDITIONAL MODULES IN TWO-SEMESTER COURSE

ENTREPRENEURSHIP

This module is designed to provide students with an introduction to entrepreneurship and to the processes involved in a business start-up. Students will gain an understanding of the nature and characteristics of entrepreneurs and identify their own potential entrepreneurial capabilities, exploring a business start-up and preparing a business plan.

The module will also focus on employability by offering students the opportunity to work in or lead a team, and develop self-management, business awareness, creativity, listening, written communication, prioritising, problem-solving, planning, influencing, negotiation, self-reflection, application of IT and numeracy and research skills. It will also develop students' awareness and engagement with their own personal development as they reflect on the skills gained.

For more information, including entry requirements, please visit isc.surrey.ac.uk

MANAGEMENT AND LEADERSHIP

The aim of this module is to introduce students to the importance of interpersonal skills, managing people, teams and groups in organisations to achieve superior performance. Students will gain an insight into the current thinking on leadership from an organisational perspective. They will examine the links between management and leadership, particularly the skills a leader needs to support organisational direction. The module will help students understand the impact of management and leadership styles on strategic decisions in differing situations, through examining the competencies and styles of successful leaders.

Applying management and leadership theories and models to specific situations will enable students to assess their impact on organisational strategy. The module will draw on a selection of established principles, including the influence of emotional intelligence on leadership effectiveness. This will enable students to assess how organisations can plan to meet current and future leadership requirements. Students will develop analytical and long-term planning skills through the use of case studies and research.

Finally, this module will enable students to research a range of management and leadership development methods evaluating theirs in meeting the skills requirements for effective leadership.

PROGRESSION DEGREES

This programme can lead to one of the following postgraduate degrees

- MSc Accounting and Finance
- MSc Business Analytics
- MSc Digital Marketing and Channel Management
- MSc Entrepreneurship and Innovation Management
- MSc Human Resources Management
- MSc International Business Management
- MSc International Corporate Finance
- MSc International Events Management
- MSc International Financial Management
- MSc International Hotel Management
- MSc International Tourism Management
- MSc International Marketing
- MSc Investment Management
- MSc Management
- MSc Occupational and Organizational Psychology
- MSc Strategic Marketing

The following progression degrees are available over a 15 month masters course, to include a work placement.

- MSc Management;
- MSc Business Analytics;
- MSc Human Resources Management;
- MSc Strategic Marketing;
- MSc Digital Marketing and Channel Management;

Please note higher progression requirements will apply to these progression degrees at the end of the Pre-Masters programme.

► ENGINEERING

THE ENGINEERING PRE-MASTERS PROGRAMME PROVIDES THE SUBJECT KNOWLEDGE, LANGUAGE PROFICIENCY AND STUDY SKILLS YOU NEED TO PROGRESS TO POSTGRADUATE DEGREE STUDY IN A RELATED FIELD AT THE UNIVERSITY OF SURREY.

During the programme you will study a core unit of general subject skills and subject-specific units, which are carefully designed for your academic development.

ONE-SEMESTER COURSE MODULES

ACADEMIC ENGLISH SKILLS

Academic English Skills aims to provide you with thorough training in language and related academic skills, enabling you to best achieve your academic potential at University. These skills include the processes of academic writing, effective and extensive reading strategies, effective participation in seminars and delivery of presentations, and listening to and recording information effectively from lectures. You will also develop the accuracy and range of written and spoken language required to use language effectively and appropriately, with clarity and confidence in an academic context.

RESEARCH SKILLS FOR MASTERS (ENGINEERING)

This module provides contextual knowledge of research methods and techniques in order to prepare students for study and research at Masters level. Students will also use Engineering knowledge and skills to carry out an investigative project.

As part of the module specific skills will be developed as students learn to justify a choice of Research Design and Research Methodology within the field of Engineering Research, they will produce a literature review in their selected discipline, analyse scientific data and critically evaluate key concepts.

Students will learn to summarise the findings of an investigative project using graphs and display charts, produce a scientific dissertation following standard referencing and present the results of the investigation to peers.

MATHS FOR ENGINEERING

This module provides an opportunity for students to develop both their mathematical reasoning and mathematical modelling skills through theory and working examples.

Students will learn to apply differential equations to a range of engineering applications, apply knowledge of mathematical functions to solve engineering problems and solve engineering problems using numerical methods.

They will also be taught to apply techniques and theories to produce calculation-based solutions to complex problems and critically evaluate mathematical models of real world problems and natural phenomena.

At the end of the module students should be able to translate real-world problems into appropriate mathematical models and effectively communicate solutions using suitable formats.

JOURNAL CLUB

This module provides an opportunity for experience of extended reading and writing to demonstrate an appropriate level of synthesis, through a literature review, speaking skills and presentation of journal articles or texts.

Students will learn to deploy acquired knowledge of principles of critical reading, apply relevant subject-specific academic conventions to academic writing, including use of data and diagrams and will be able to demonstrate competence in the process of self-critical drafting for postgraduate study, reflecting on and incorporating feedback.

Students will learn to apply independent learning techniques, critically evaluate sources and reflect on the process of leading a seminar and discussion, as well as develop critical literature review skills, utilising a variety of research sources.

COMPUTING FOR ENGINEERING

This module ensures that students can competently use MATrix LABoratory (MATLAB) to solve engineering problems, master numerical matrices and graphical representation. Using knowledge of MATLAB to solve engineering applications and knowledge of Neural Networks to solve engineering applications



Students will also use matrices to solve complex engineering problems and develop algorithms to solve mathematical and practical engineering applications, including training and evaluating a Neural Network.

By the end of the module students should be able to demonstrate effective use of MATLAB for data analysis, visualisation and mathematical modelling and use MATLAB apps to create and train Neural Networks.

ADDITIONAL MODULES FOR TWO-SEMESTER COURSE

LAB SKILLS FOR ENGINEERING

This module prepares students to work safely in the laboratory, focussing on developing experimental skills and the awareness of instruments and apparatus, to use error analysis to estimate the effect of experimental uncertainties on experimental results and apply effective use of laboratory log books in engineering.

Students will experience producing an effective scientific laboratory report, evaluating factors impacting design and safety in practical engineering and selecting appropriate apparatus.

They will learn to deploy software tools and techniques to accurately record and present data.

Demonstrate competence using a wide range of experimental techniques and equipment and carry out practical experiments, following health and safety regulations.

ENTREPRENEURSHIP FOR ENGINEERING

This module is designed to provide students with an introduction to enterprise in the key engineering-based business contexts and to the processes involved in a business start-up within an engineering context. Students will gain an understanding of engineering's role in industry and identify their own potential entrepreneurial capabilities, exploring engineering business start-ups, industry challenges and preparing a business plan.

The module will also focus on employability by offering students the opportunity to work in or lead a team, and develop self-management, business awareness, creativity, listening, written communication, prioritising, problem-solving, planning, influencing, negotiation, self-reflection, application of IT and numeracy and research skills. It will also develop students' awareness and engagement with their own personal development as they reflect on the skills gained.

PROGRESSION DEGREES

This programme can lead to one of the following postgraduate degrees:

- MSc Bridge Engineering
- MSc Civil Engineering
- MSc Computer Vision, Robotics and Machine Learning
- MSc Electronic Engineering
- MSc Structural Engineering

For more information, including entry requirements, please visit isc.surrey.ac.uk

▶ HEALTH & MEDICAL SCIENCES

THE HEALTH AND MEDICAL SCIENCES PRE-MASTERS PROGRAMME PROVIDES THE SUBJECT KNOWLEDGE, LANGUAGE PROFICIENCY AND STUDY SKILLS YOU NEED TO PROGRESS TO POSTGRADUATE DEGREE STUDY IN A RELATED FIELD AT THE UNIVERSITY OF SURREY.

During the Pre-Masters Programme you will study a core unit of general subject skills and subject-specific units, which are carefully designed for your academic development.

ONE-SEMESTER COURSE MODULES

ACADEMIC ENGLISH SKILLS

Academic English Skills aims to provide you with thorough training in language and related academic skills, enabling you to best achieve your academic potential at University. These skills include the processes of academic writing, effective and extensive reading strategies, effective participation in seminars and delivery of presentations, and listening to and recording information effectively from lectures. You will also develop the accuracy and range of written and spoken language required to use language effectively and appropriately, with clarity and confidence in an academic context.

STATISTICS FOR HEALTH AND MEDICAL SCIENCES

Understanding statistics is embedded across all research in Health and Medical Sciences so it is integral that students can use their knowledge and apply it to design and carry out research. Students will learn to critically apply a range of mathematical and statistical methods and tools, analyse a range of statistical approaches and select the most appropriate within the context of research.

During the module students will formulate solutions to health and medical sciences problems using mathematical and statistical techniques, as well as learning to translate real-world problems into mathematical and statistical models and effectively communicate solutions.

RESEARCH SKILLS FOR MASTERS (HEALTH AND MEDICAL SCIENCES)

This module is an opportunity for students to demonstrate the ability to frame appropriate questions and apply learnt techniques of enquiry in their chosen specialism. To use HMS knowledge and skills to carry out an investigative project in Health and Medical Sciences, justify a choice of research design and research methodology, produce an evaluative literature review, analyse scientific data as part of an investigative project and critically evaluate key concepts.

Students will learn to summarise the findings of an investigative project, using appropriate graphs and display charts, produce a scientific dissertation following standard referencing and present the results of the investigation to peers and other stakeholders.

JOURNAL CLUB

This module provides an opportunity for experience of extended reading and writing to demonstrate an appropriate level of synthesis, through a literature review, speaking skills and presentation of journal articles or texts.

Students will learn to deploy acquired knowledge of principles of critical reading, apply relevant subject-specific academic conventions to academic writing, including use of data and diagrams and will be able to demonstrate competence in the process of self-critical drafting for postgraduate study, reflecting on and incorporating feedback.

Students will learn to apply independent learning techniques, critically evaluate sources and reflect on the process of leading a seminar and discussion, as well as develop critical literature review skills, utilising a variety of research sources.

BIOCHEMISTRY AND PHYSIOLOGY (ELECTIVE MODULE)

This module provides a broad introduction to key elements of Cell Biology, Molecular Biology, Evolution, Ecology and the Environment. To learn to describe key concepts and terms in relation to the study of Cell Biology, Molecular Biology, Embryo Development and Developmental Biology and evaluate how research methods and approaches could be used to investigate a range of biological problems.

By the end of the module students should be able to carry out laboratory experiments following standard experimental protocols, produce practical reports following standard scientific methodology, interpret and analyse relevant research data and interpret graphical and mathematical models of biology.

Students will also be helped to apply practical biology-life skills and good laboratory practices to the development of experimental protocols including appropriate statistical analyses, displaying the ability to be innovative and to conceptualise responsibly and collaboratively.

PSYCHOLOGY (ELECTIVE MODULE)

This module gives an overview of theories, methods and research findings in the area of social and personality development during childhood and adolescence from a socio-cultural perspective. It will also introduce students to some of the key questions which currently guide research and practice in environmental psychology and provide an insight into research and theory development.

Students will be taught to demonstrate a systematic understanding of contemporary social psychological research on historical processes, compare and contrast theoretical perspectives in personality development and demonstrate coherent knowledge of environmental psychology theories, methods and research evidence. They will also learn to critically evaluate relevant psychology research literature and analyse the quantity and quality of evidence in psychology.

For more information, including entry requirements, please visit isc.surrey.ac.uk

ADDITIONAL MODULES TWO-SEMESTER COURSE

THE FUTURE SCIENTIST

This module explores modern scientific practice against a backdrop of change, enabling the student to explore a scientist's role in society and their responsibility to and within the wider community.

Students will learn to critically evaluate experimental data and primary literature, analyse the role of the scientist in modern society and their responsibility to the wider community and demonstrate the importance of sound scholarly conduct. They will also be taught to recognise the pitfalls that could lead to scientific fraud.

Students will critically examine how health and safety issues and project/data management competencies could change the outcome of a life science project and critique the broader societal outcomes of life science research with reference to scholarly conduct, scientific fraud and research misuse. Students will also learn to communicate conclusions concisely to scientific and non-scientific audiences.

ENTREPRENEURSHIP FOR HEALTH AND MEDICAL SCIENCES

This module is designed to provide students with an introduction to enterprise in the Health and Medical science Industries and to the processes involved in a business start-up within the Health and Medical Science context. Students will gain an understanding of the nature and characteristics of businesses in the Health and Medical Science Industry and identify their own potential entrepreneurial capabilities, exploring HMS business start-ups and preparing a business plan.

The module will also focus on employability by offering students the opportunity to work in or lead a team and develop self-management, business awareness, creativity, listening, written communication, prioritising, problem-solving, planning, influencing, negotiation, self-reflection, application of IT and numeracy and research skills. It will also develop students' awareness and engagement with their own personal development as they reflect on the skills gained.

PROGRESSION DEGREES

This programme can lead to one of the following postgraduate degrees:

MSc Developmental Psychology in Research and Practice
MSc Environmental Psychology
MSc Food Science
MSc Human Nutrition
MSc Social Psychology





Meet our Students

English for Pre-Masters

▶▶▶ GET THE SUPPORT YOU NEED TO REACH THE IELTS REQUIREMENT FOR YOUR PATHWAY, WITH OUR ENGLISH FOR PRE-MASTERS PROGRAMME.

Depending on your level of English, you can complete either one or two semesters of English language prior to beginning your academic programme.

English for Pre-Masters students at the University of Surrey International Study Centre will not need to take an additional IELTS test for progression to their Pre-Masters Programme. Students will be assessed on their Academic English Skills (AES) grade at the International Study Centre (they will be required to achieve a minimum of 40% in all skill areas).

COURSE LENGTH:

You can take one or two semesters of English Language Preparation. If you have IELTS 5.0 (5.0 in all bands) or equivalent, you will need one semester of English for Pre-Masters. If you have IELTS 4.5 (4.5 in all bands) or equivalent, you will need to complete our two semester English for Pre-Masters programme.

INTAKE DATES:

This course has two start dates, depending when you begin your Pre-Masters Programme.

ONE-SEMESTER PROGRAMME

- June, prior to starting your academic programme in September
- September, prior to starting your academic programme in February

TWO-SEMESTER PROGRAMME

- June, prior to starting your academic programme in February

At the end of your English language course, you will start your Pre-Masters programme, providing you have achieved the required module grades.



ADRIAN FROM HONG KONG

"I'm looking forward to studying aerospace engineering and then doing a Master's degree. Doing the Foundation Year presents a golden opportunity. We can visit the Centre for Space Engineering and Aerospace Engineering at the University of Surrey where we can talk with the professors and the current students."



JIALI FROM CHINA

"It's been a really amazing experience here; the teachers are all really experienced and helpful. They are really passionate about our studies and they help us a lot with our daily lives and accommodation. They always try to get to know the students. They not only care about our study life, they also care about us."



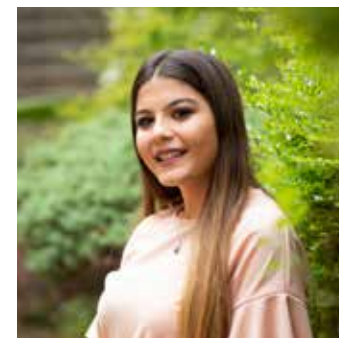
LIANRI FROM SOUTH AFRICA

"I knew that the University of Surrey was a really good university, and the Foundation Year provided me with direct progression so it was a sure thing in my mind that I wanted to be here. I hope to work in a hospital or at one of the major biomedical companies as part of my placement year."



YE CHONG FROM SINGAPORE

"The ISC has helped me to prepare for studying the law. Coming to the International Study Centre at the University of Surrey is a very special experience. It's not like studying in a home country. The teachers are very welcoming, they're really patient with us, especially as most of us don't speak English as our first language."



TALA FROM BAHRAIN

"My journey in the ISC has been amazing. I can't elaborate enough on how supportive the staff are, the teachers are brilliant. They push the students to their utmost potential, they push us out of our box and whoever needs help, they always give us support. They really make us feel like we're unique."



JOHNY FROM SYRIA

"I chose the University of Surrey because it's one of the best universities for Civil Engineering. I have friends who studied here and told me it's a good university, there are a lot of good subjects you can study here. I loved my experience here, I think United Kingdom is one of the best countries in the world to study."

Clubs and Societies

UNIVERSITY IS THE IDEAL OPPORTUNITY TO BREAK OUT OF YOUR COMFORT ZONE AND FIND A NEW HOBBY, OR PURSUE AN EXISTING PASSION WITH LIKE-MINDED PEOPLE.

Societies are made up of groups of students interested in a common theme – maybe you all love baking, share a geographical location or have similar religious views.

Whether you want to share in the magic of Harry Potter or reckon the Archery society may just hit the mark, joining one of our 140+ societies (or starting your own) will help you make friends and memories for life.



Yoga



Drama



Squash



Lacrosse



Radio



Dance



Fencing



Rock Climbing

CURRENT CLUBS AND SOCIETIES INCLUDE

- Advertising, Marketing and PR society
- Afro-dance Society
- American Football
- Anime and Manga Society
- Arabic society
- Archery
- Artsoc (Art)
- Association of British and Chinese University Students (Abacus)
- Athletics and Cross Country
- Autisoc
- Badminton
- Baking Society
- Ballroom and Latin dance
- Bandsoc
- Barbershop
- Basketball
- Bengali Society
- Bhangra Society
- Bible Reading Society
- Big Band
- Biomedical Engineering Society
- Biosoc (Bioscience)
- Boat
- Bollywood
- Boxing
- Brunei Society
- Bulgarian Society
- Business School Society
- Canoe
- Catholic Society
- Cheerleading
- Chemeng Soc (Chemical Engineering)
- Chemistry Society
- Chess
- Chinese Christian Fellowship
- Christian union
- Civsoc (Civil Engineering)
- Cocktail Society
- Compsoc (Computing)
- Concert Band
- Conservative Society
- Craftsoc (Arts and Crafts)
- Cricket
- Cycling
- Cypriot Society
- Czech and Slovak Society
- Dance Squad
- Debating Society
- Debenelux
- Disney
- Dodgeball
- Enactus
- Equestrian and Polo Club
- Fashion and Retail Society
- Feminist
- Fencing
- Filipino
- Film Soc
- Football - Mens
- Football - Womens
- French
- Game of Thrones
- Gamesoc
- Gliding
- Golf
- Gospel Choir
- GSA Guildford School of Acting
- Guildford Leo's
- Gymnastics
- Hacksurrey
- Harry Potter Society
- Hellenic Society
- Hispanic Society
- Hkpass
- Hockey
- Ice Skating
- Indian Students Association (Isa)
- Indonesian Society
- Iranian
- Italian
- Japanese
- Jazz Orchestra
- Jiu jitsu
- J-soc
- Judo
- Karate
- Karting Club
- Kazakh
- Larossee
- Law Society
- Litsoe
- Madsoc (Music and Drama Society)
- Mah Jong
- Malaysian Society
- Match Making
- Material Science Society
- Maths Society
- Mechsoc
- Men Futsal
- Mindsoc
- Mixed Martial Arts
- Model United Nations Society
- Mountaineering
- Musical Theatre Society
- Nepalese Society
- Netball
- Nigerian Society
- No Wave
- Nordic
- Nursoc
- Nutrisoc
- Paramedic Society
- People and Planet
- Petsoc
- Photographic Society
- Physoc
- Pole Fitness
- Polish Society
- Politics Society
- Pool and Snooker
- Portuguese Society
- Post-graduate Society
- Powerhouse
- Presha
- Psychology
- Public Speaking Society
- Romanian
- Rugby
- Rugby - Women's
- Russian Speakers Society
- Sailing
- Salsa Society
- Scuba Society
- Sikh Society
- Singaporean Society
- Skydiving
- Snowsports
- Sociology Society
- Somali
- Squash
- Sri Lankan Society
- Stag Radio
- Stage Crew
- Stagtv
- Starwars
- Stem
- String Orchestra
- Student Action for Refugees (Star)
- Subcultured Magazine
- Surf Club
- Surrey Cut the Rent
- Surrey EFS
- Surrey First Aid
- Surrey Garden
- Surrey investing
- Surrey Islamic Society
- Surrey Labour Students
- Surrey Liberal
- Surrey Marrow
- Surrey TEDX
- Surrey Unicef
- Surrey Video Gaming Society
- Surreyinfosec
- Swimming and Water polo
- T.H.E Society (Tourism, Hospitality and Events)
- Table Tennis
- Taekwondo
- Taiwanese Society
- Tamil Society
- Tennis
- The stag
- Theatre
- Trampoline
- Triathlon
- Turkish and Northern Cypriot Society
- Ultimate Frisbee
- Vegsoc
- Vetsoc
- Vietsoc
- Volleyball
- Weightlifting
- Wokesurrey
- Women in Engineering
- Women in Physics
- Yoga
- Zensoc (Meditation)

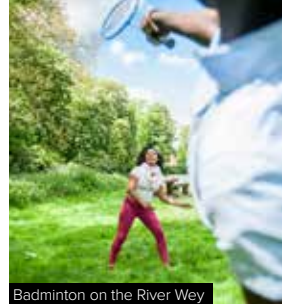
Visit www.ussu.co.uk/getinvolved/sports-and-societies For more information

Over 40

SPORTS AND
FITNESS CLUBS



Student services



Badminton on the River Wey



Cafés on campus and in the town



Guildford's cobbled streets

Student life

▶ ▶ ▶ AS SOON AS YOU ARRIVE ON CAMPUS, YOU WILL BE WELCOMED AND QUICKLY MAKE FRIENDS WITH STUDENTS FROM ALL OVER THE WORLD.

International students make up 35% of the student body with over 120 different nationalities studying here and contributing to the lively and diverse atmosphere on campus. Getting around the campus is simple. Everything you need is within walking distance, so you are never far from where you need to be.

TAKE A STUDY BREAK

Students at Surrey are committed to their studies and work hard. But once the work is done, it's time to relax and make the most of your free time. Socialising on campus is easy, with lots of space to be with friends and enjoy student life.

EATING AND SOCIALISING

There are plenty of places to eat on campus, from authentic international cuisine in the Students' Union to an à la carte restaurant. There is even a pizza house that can deliver directly to your room. You will also find an international food shop on campus, where you can stock up on treats from home.

Visit the website to explore the campus using the virtual tour: surrey.ac.uk/virtualtour

YOUR STUDENTS' UNION

The Students' Union lies at the heart of campus life. As an independent, membership-led charity, the Union is the sole representative body for Surrey students.

The Union is responsible for facilitating clubs and societies, organising events, offering volunteering and training opportunities, voicing student opinions and providing support and advice to ensure that all students get the most out of their time at Surrey.

MAKE NEW FRIENDS AND HAVE FUN

The Students' Union organises fun activities and events such as creative workshops and trips abroad. The Union also houses five bars, cafés and restaurants and has its own 1,600-capacity nightclub. So whether you're into clubbing or comedy, live music or pub quizzes, you will find plenty to keep you entertained without even having to leave the campus.

GET INVOLVED

You will be encouraged to get involved with Union activities as much as you want. You will have plenty of opportunities to participate by joining a club or society, or even by becoming a sabbatical officer.

CATHERINE FROM NIGERIA

BUSINESS, ECONOMICS, LAW AND SOCIAL SCIENCES INTERNATIONAL FOUNDATION YEAR NOW STUDYING BSC ECONOMICS

"Studying at Surrey has been a great experience, one, for the level of balance between studies and extracurricular activities. It's not so much focused on just academics, but it looks at the all-around experience of a student in terms of engaging in societies or taking up a placement year."

THE CAMPUS IS SEPARATE AND IT HAS **everything** YOU NEED



Feel at home

WE ARE COMMITTED TO ENSURING YOU REACH YOUR FULL POTENTIAL AND HAVE A WONDERFUL STUDENT EXPERIENCE AT SURREY AND THE INTERNATIONAL STUDY CENTRE.

From the moment you arrive, if you need any support, information or guidance, our friendly on-site team are available to offer help every step of the way.

SETTLING IN

For many students, starting university life is their first experience of living away from home. To help you settle in, you will receive a big, warm welcome from the 'Freshers Angels' (University of Surrey student helpers) when you arrive. They can help you find your way around campus and will be a friendly point of contact during your studies.

You will also meet the International Study Centre staff and fellow international students who will be by your side as you begin an exciting new life as a student in the UK.

PERSONAL SUPPORT

When you arrive at the International Study Centre, we will also introduce you to your Personal Tutor. They will help you get the most out of your university experience by answering questions and offering ongoing support.

Our friendly Student Mentors are also on hand to help you settle in and make friends, and the dedicated Residential Support Team works to promote a positive living experience for everyone on campus.

CENTRE FOR WELLBEING

It is important that you feel happy and healthy throughout your time at Surrey. If you need someone to talk to or have any personal concerns, our counsellors are available. All our counsellors are experienced in working with students from a broad range of cultures and nationalities.

STUDENT SERVICES CENTRE

Located at the heart of campus, the Student Services Centre can help if you need information, advice or guidance on anything related to student life at Surrey. Friendly staff are trained to deal with a wide range of questions and are a key source of information on many University services.

STUDENTS WITH DISABILITIES

Surrey offers a range of support services for students with additional needs. Among these are special examination arrangements, dyslexia screening and one-to-one learning support. The Assistive Technology Centre provides additional tools and resources, including workstations equipped with specialist learning software.



FARRIZ FROM MALAYSIA

STUDIED BUSINESS, ECONOMICS, LAW AND SOCIAL SCIENCES
INTERNATIONAL FOUNDATION YEAR PROGRESSED TO BSC (HONS)
BUSINESS MANAGEMENT

"I live in Manor Park, which is like a student village with a cafe to just chill after studying. It's good. I like going to Surrey Sports Park because it has really good facilities, with the football pitches and the gym.

Also, the town is a mix of old and modern, so I find it really interesting too. Sometimes I explore or go watch a movie, and during the weekends they have the market. They sell things like cookies, clothes, vegetables and fish."

Ist

FOR SECURITY IN THE TIMES
HIGHER EDUCATION
STUDENT EXPERIENCE
SURVEY 2018

SURREY ACCOMMODATION AT A GLANCE

- More than half of our rooms have en-suite shower and toilet facilities
- More than half of our accommodation is on the Stag Hill campus and a third of rooms have en-suite shower and toilet facilities
- Elsewhere, Manor Park is about one mile away (a 20-minute walk or a short cycle ride), with about 2,500 rooms, a café and easy access to our Olympic-standard facilities at Surrey Sports Park
- You will find communal areas with TV rooms, mail racks and friendly staff
- All residents benefit from broadband internet and belongings insurance
- All residences are non-smoking
- Most accommodation is mixed-gender, but you can request to live in a single-gender flat or floor if you wish
- Specially adapted rooms are available for students with physical disabilities

As soon as you've received a Confirmation of Enrolment Letter from our Admissions team, you're eligible to begin your application for accommodation.

For more information, visit isc.surrey.ac.uk/international-study-centre/accommodation

STUDENT ACCOMMODATION

Living in university accommodation is a great way to meet new people, spark friendships and find your feet. Accommodation at Surrey is arranged in groups of self-catered housing called Courts of Residence. All accommodation has been carefully designed to provide a comfortable and safe living space you can make your own.

Rooms are available to suit a range of tastes and budgets, from basic shared and single rooms, to modern en-suites.

It is important to apply for housing early for the best chance of securing your first choice accommodation.



Manor Park Campus



Manor Park Band F



Manor Park Band D



Student relaxing in Manor Park accommodation



Manor Park Band E

90% OF STUDENTS JOINING IN SEPTEMBER 2018 RECEIVED THEIR FIRST CHOICE OF ACCOMMODATION

Our accommodation

- ▶ ▶ ▶ PRICES START FROM £72 PER WEEK FOR A SHARED, SPLIT LEVEL ROOM. PRICES INCREASE DEPENDING ON ACCOMMODATION TYPE, ALL THE WAY UP TO A STUDIO FLAT OPTION FROM £220 PER WEEK*.

TYPICAL ROOMS AND FACILITIES (ACCOMMODATION BANDS D AND E)

MANOR PARK

Manor Park offers well equipped en-suite rooms in shared flats of six, seven or eight students, sharing a kitchen-diner. Manor Park is located one mile (1.6km) from the main Stag Hill campus, a 20-minute walk or five-minute bus ride. There is a subsidised bus service, giving access to all local routes and ample storage facilities for bicycles. Manor Park is close to the Surrey Sports Park Tesco superstore and Royal Surrey County Hospital, and has its own launderettes, reception building and common rooms with TVs or games facilities for residents. Manor Park has no parking for residents, with the exception of bays for use by wheelchair users.



UNIVERSITY COURT

University Court has more than 300 en-suite rooms in 17 houses with two or three floors of 10 to 15 students sharing a kitchen/diner. Located at the edge of campus closest to the town centre and railway station, students share a communal TV room and reception with nearby Stag Hill Court.



MANOR PARK AND STAG HILL CAMPUS - ENHANCED EN-SUITE ROOMS

Enhanced en-suite rooms are approximately 50% bigger than lower grade rooms, so are ideal for students who have more belongings or want more space to study or relax. However, these are limited in number. The rooms are mainly located at Manor Park with a few on campus in International House and University Court.

These rooms have a double bed and an en-suite shower room with toilet and washbasin. Most are located in flats of six lower band rooms sharing a kitchen.



COST OF LIVING

Item	Average cost Guildford
Meal, inexpensive restaurant	£12.00
Cappuccino	£2.59
Bottle of water (0.33 litre)	£0.71
Monthly travel pass (regular price)	£76.09
Petrol (1 litre)	£1.24
Fitness club monthly fee	£39.00
Cinema ticket	£10.50
Monthly internet (60 Mbps or more, unlimited data, cable/ADSL)	£41.50
Average on campus accommodation cost per week	£72- £225

Please note that all prices are approximations of averages sourced from numbeo.com/cost-of-living in January 2019 and are subject to change.

Please visit isc.surrey.ac.uk/international-study-centre/accommodation for more information on rooms and pricing.

*All accommodation is subject to availability. The cost shown is intended as a guideline and is subject to change. The cost of your room will be confirmed in your tenancy agreement.

Illustrations are indicative and for identification purposes only and may vary from what is shown (bedding and personal items are not included). Visit website for more details.

Discover Guildford



Canal boats on the River Wey



Close to London



Shopping in the town centre



Guildford castle



Guildford town

▶ ▶ ▶ STUDENTS TELL US THAT STUDYING AT SURREY GIVES THEM THE BEST OF TWO WORLDS: THE OPPORTUNITY TO LIVE SURROUNDED BY BEAUTIFUL ENGLISH COUNTRYSIDE, WHILE THE SIGHTS OF LONDON ARE ONLY A SHORT TRAIN RIDE AWAY.

The campus itself is located within sight of the Surrey Hills Area of Outstanding Natural Beauty. This setting provides a peaceful and natural environment where you can concentrate on your studies or take time out to relax with your friends.

The nearby Guildford town centre is well-loved by international students for its unique blend of historical, cultural and modern delights. The cobbled High Street provides the perfect setting for a day out with many exclusive boutiques, independent shops and three shopping centres. Away from the shops you will find parks, waterways and even a 900-year-old castle. A frequent bus service links the campus with the town centre.

EXPLORING SURREY

In the Surrey countryside, you will discover many places to relax and unwind, including pretty country pubs and National Trust historical sites to visit. There are also acres of lovely countryside for walking and cycling.

For those seeking an outdoor adventure, Surrey offers everything from the thrill of zip wires to paintballing and mountain biking in the stunning Surrey Hills.

The region is rich with heritage and culture. Famous attractions such as Hampton Court, Windsor Castle and Kew Gardens are all easily accessible. Outstanding sporting venues are also close by, such as tennis at Wimbledon, rugby at Twickenham, horse racing at Epsom and Ascot and cricket at the Oval.

LONDON ON YOUR DOORSTEP

London, one of the world's greatest cities, is under 40 minutes away by rail. Whether you want to see a West End show, go on a sightseeing tour, visit a museum or enjoy a night out with friends, Guildford is an ideal base from which to explore the capital city.

How to apply

IF YOU WOULD LIKE TO APPLY TO STUDY AT THE UNIVERSITY OF SURREY INTERNATIONAL STUDY CENTRE, YOU WILL NEED TO COMPLETE AN APPLICATION FORM AND SUBMIT THE RELEVANT DOCUMENTATION.

You can either apply through your local education agent or directly via our website.

Call: + 44 (0) 1273 339333

If you are applying directly and have a question, our Student Enrolment Advisers will be happy to help. They speak a variety of languages and understand several more.

For full application information visit: isc.surrey.ac.uk

STUDENT INSURANCE

We strongly recommend that international students have the protection of personal insurance whilst in the UK. To cover you as a student at the International Study Centre, you may wish to purchase our "StudyCare Insurance Plus" insurance cover. This policy will cover you for loss of personal possessions, travel delay, as well as providing medical insurance until the end of your International Study Centre academic programme. You can purchase StudyCare Insurance Plus as part of the application process. If you prefer, you may take out insurance cover with another provider.



isc.surrey.ac.uk/how-to-apply/fees

Campus map

THE UNIVERSITY CAMPUS IS A LANDSCAPED, SELF-CONTAINED SITE JUST OUTSIDE GUILDFORD TOWN CENTRE.

- | | | | |
|-------------------------------|---------------------------------|------------------------------|----------------------------|
| 1 Accommodation Office | 5 Centre for Wellbeing | 9 International Study Centre | 12 Student Services Centre |
| 2 Additional learning support | 6 Chaplaincy Office | 10 IT Services | 13 Student Union |
| 3 Careers Service | 7 Health Centre | 11 Library & Learning Centre | 15 University Hall |
| 4 Cashiers | 8 International Student Support | 16 Surrey Sports Park | |

Central London is only 34 minutes away by train from the nearby station, and the major international airports at Heathrow and Gatwick are also both within easy reach.

surrey.ac.uk/campus-map
Discover more by downloading our virtual reality app: surrey.ac.uk/vr-app

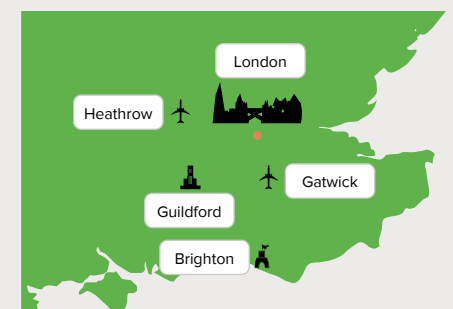
Surrey Sports Park

Manor Park

20 minute walk or regular five minute bus service between campuses



South-east England



- 34 minutes to London (by train)
- 30 minutes to Heathrow Airport (by car)
- 40 minutes to Gatwick Airport (by car)
- 50 minutes to the south coast (by car)