

International
**Course
Guide**

2020

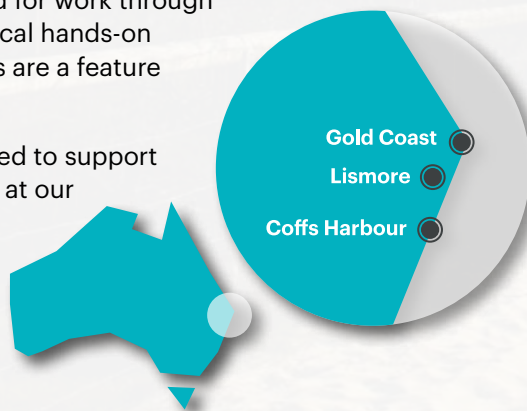


**Southern Cross
University**
Australia



10 REASONS TO STUDY AT SOUTHERN CROSS

- 1.** Outstanding student support – ranked number one in Australia for overall international student support*, our specialised team will support you throughout your studies. Academic skills, counselling and mentoring is also on offer.
- 2.** Study at one of the top 100 young universities in the world according to the Times Higher Education global rankings.
- 3.** Unique campus locations at the Gold Coast, Lismore and Coffs Harbour – combine study with a great lifestyle.
- 4.** Benefit from a reduced cost of living at our Gold Coast, Lismore or Coffs Harbour campuses.
- 5.** Join the many creative, social, sporting and special interest groups on campus.
- 6.** Access world class facilities – including high-tech engineering labs, drone technology, recording studios, digital media suites and analytical research equipment to support your learning and build work-ready skills.
- 7.** Stay in convenient, comfortable on-campus accommodation just minutes from your lectures in Lismore or Coffs Harbour, or choose from a wide variety of off-campus accommodation.
- 8.** Add an international experience as part of your degree and make new friends from around the world.
- 9.** Get the skills you need for work through our internships. Practical hands-on learning and field trips are a feature of many courses.
- 10.** Scholarships are offered to support international students at our Gold Coast, Lismore or Coffs Harbour campuses.



Published by Southern Cross University May 2019. The information in this brochure was accurate at the time it was published and is to be used as a guide only.

Southern Cross University reserves the right to alter, amend or delete details of course offerings and other information published in the brochure at any stage. To the extent permitted at law, the University excludes all liability (including all losses, damages, costs and expenses of whatever nature) arising from the use of, or reliance on, any of the information contained in this brochure. Information in this brochure is for international students wanting to study in Australia.



Contents

Gold Coast Campus	2
Lismore Campus	4
Coffs Harbour Campus	6
Sydney, Melbourne & Perth	8
The Hotel School	9
Live, Study, Explore	10
Life at Southern Cross	11
Create Careers That Matter	12
Accommodation	13
Cost Of Living	13
University Pathways	14
Academic English Pathways	17
Academic Skills Pathways	18
Diploma Pathways	19
Arts, Humanities & Social Sciences	20
Business & Tourism	24
Digital Media & It	34
Engineering & Science	38
Health Sciences	44
Nursing & Midwifery	54
Indigenous Knowledge	58
Law & Justice	60
Marine & Environmental Sciences	66
Music & Creative Arts	72
Research	76
Study Abroad	78
Scholarships	80
Services For Students	81
How To Apply	82

*On the cover:
Multi-storey mural at the Gold Coast campus by internationally recognised artist and Southern Cross Young Alumnus of the Year 2018 Guido van Helten.*



5-STAR STUDENT SUPPORT
5-STAR TEACHING QUALITY
5-STAR SOCIAL EQUITY



TOP 110 IN ASIA-PACIFIC
TOP 50 GEN Y UNIVERSITIES
TOP 100 UNDER 50 YEARS OLD



WORLD STANDARD
OR ABOVE IN 23
KEY RESEARCH AREAS



NUMBER 1 IN AUSTRALIA
FOR INTERNATIONAL
STUDENT SUPPORT

GOLD COAST CAMPUS

Our Gold Coast campus is located at Coolangatta, just 400 metres from North Kirra Beach and adjacent to the Gold Coast Airport. Many vantage points offer stunning views of the Pacific Ocean.





Gold Coast campus

The campus is spread across three contemporary buildings that house innovative learning spaces, health science laboratories, lecture theatres with live video broadcasting, computer labs and student lounges. More than 4,000 students study on campus at the Gold Coast.

The University's Digital Enterprise Lab, located at the Gold Coast, develops innovative IT solutions to real-world problems. A multitude of medical, leisure and service industries offer work and placement opportunities for health, business and tourism students.

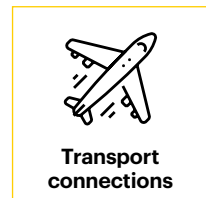
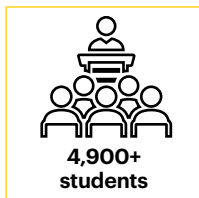
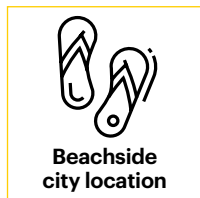
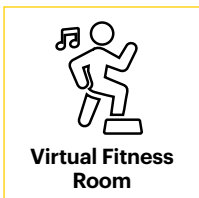
Discipline-specific laboratories provide state-of-the-art facilities for biomedical science, podiatry, pedorthics, nursing and midwifery, sport science, speech pathology, osteopathy and occupational therapy students. The on-campus Health Clinic allows health sciences students to develop their clinical skills in a safe and supervised environment.

Other disciplines offered at the Gold Coast include law, arts, engineering management and social welfare.

ABOUT THE GOLD COAST

A sun-loving subtropical city of beaches, rainforests, parklands and thriving business and retail activity, the Gold Coast is the sixth largest city in Australia with a population of more than half a million people. Sport and entertainment, including major theme parks, are part of the relaxed lifestyle.

Visit: scu.edu.au/goldcoast



LISMORE CAMPUS

Our Lismore campus, in its beautiful rainforest setting, hums with vitality and is a creative hub for the music, media and visual arts degrees for which it is renowned.





Lismore campus

It is also home to state-of-the-art engineering and environmental science facilities where you will find laboratories for activities as diverse as concrete stress testing and hydraulic water flow modelling, 3D printing and synchrotron technology.

Our sports science, osteopathy and nursing facilities, where students learn in specialist labs and simulated hospital wards, are world class. Health students also gain clinical experience in the on-campus Health Clinic.

A thriving local tourism industry provides internship and work opportunities for business and tourism students.

Other disciplines taught at Lismore include law, arts, social science, education, marine and forest science and Indigenous knowledge. The campus is home to Gribi College of Indigenous Australian Peoples.

The campus includes a Learning Centre and library complex, heated pool and gym, and lush grounds with an abundance of wildlife.

ABOUT LISMORE

Lismore in the Northern Rivers region of NSW, with its surrounding villages and nearby coastal towns of Byron Bay and Ballina, is a superb location to live and study. Artistic, alternative and socially active, Lismore is renowned for its proximity to subtropical World Heritage rainforests, access to stunning beaches and signature events such as Splendour in the Grass, Byron Bay Bluesfest, Byron Writers Festival, Mullum Music Festival and Lismore Lantern Parade.

Visit: scu.edu.au/lismore

Enterprise Lab

2,500+ students

Fitness centre and pool

On-campus accommodation

Health Clinic

COFFS HARBOUR CAMPUS

The University is part of an education precinct in Coffs Harbour, co-located with TAFE NSW, a senior high school, and the Coffs Harbour Innovation Hub.

NATIONAL MARINE SCIENCE CENTRE

The National Marine Science Centre is part of Southern Cross University's School of Environment, Science and Engineering.

Located in Charlesworth Bay, Coffs Harbour, the Centre sits on the edge of the beautiful Solitary Islands Marine Park.

Visit: scu.edu.au/nmsc





Coffs Harbour campus

A variety of resorts, hotels and tourist attractions in the local area provide exciting opportunities for business and tourism students.

Discipline-specific facilities for nursing, midwifery and sports science include laboratories, a birthing suite and advanced movement lab, where students learn and conduct tests relating to exercise physiology, biomechanics and neuroscience.

A new multi-million dollar health facility is due to open at our Coffs Harbour campus in 2019, paving the way for a new generation of occupational therapists, exercise scientists, health practitioners and community workers to undertake their professional training in this idyllic coastal location.

Occupational therapy and a pathway program for enrolled nurses to become registered nurses, are now available at Coffs Harbour in response to a boom in demand for human services and health professionals.

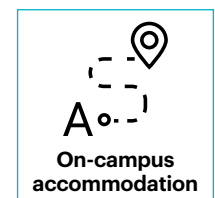
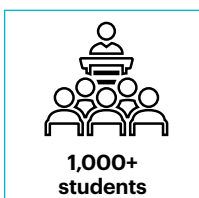
Other disciplines offered at Coffs Harbour include psychological science which was rated number one in Australia for teaching quality and student support by the Good Universities Guide 2019.

ABOUT COFFS HARBOUR

Located approximately halfway between Brisbane and Sydney, where the escarpment of the Great Dividing Range meets the Pacific Ocean, Coffs Harbour is a popular tourist destination.

Beautiful beaches and a lush coastal hinterland offer a relaxed and friendly lifestyle in this well-serviced city of about 73,000 people which offers a host of outdoor and water activities as well as a vibrant arts and cultural landscape.

Visit: scu.edu.au/coffsharbour



BRANCH CAMPUSES

SYDNEY, MELBOURNE & PERTH



EduCo conducts academic courses on behalf of Southern Cross University in Sydney, Melbourne and Perth, offering courses in business, business administration, accounting and information technology at undergraduate and postgraduate level.

The Sydney campus is located on the south side of Sydney's central business district in Surry Hills, with excellent transport and sporting facilities at the doorstep.

Melbourne branch campus is located in the heart of the central business district with modern classroom facilities, student lounge and dedicated student welfare support team.

Perth is the latest addition to our network of campuses and offers students the opportunity to study in a relaxed environment in a picturesque city.

COURSES AVAILABLE	STARTS	DURATION	CRICOS	ANNUAL FEES
Diploma of Business*	March, July, November	1 year	086030E	\$29,600
Bachelor of Business	March, July, November	3 years	081532A	\$29,600
Bachelor of Information Technology	March, July, November	3 years	086031D	\$29,600
Graduate Diploma in Business	March, July, November	1 year	081762J	\$32,400
Master of Business Administration	March, July, November	2 years	080919A	\$32,400
Master of Professional Accounting	March, July, November	2 years	081533M	\$32,400

*Not available in Perth.

THE HOTEL SCHOOL



The Hotel School is a unique educational partnership between Southern Cross University and Mulpha Australia, a major investor in the hospitality industry.

The combination of academic excellence from Southern Cross University and industry connectivity from Mulpha Australia creates an innovative learning environment.

The courses offered at The Hotel School focus on hotel operational skills, management practice in the tourism and

hospitality industry and the skills needed for continued learning in a changing global business environment.

Visit: hotelschool.scu.edu.au

THE
HOTEL SCHOOL[™]
SYDNEY • MELBOURNE

COURSES AVAILABLE	STARTS	DURATION	CRICOS	ANNUAL FEES
Bachelor of Business in Hotel Management	March, July, November	3 years	086102E	\$27,600
Graduate Certificate in International Tourism and Hotel Management	March, July, November	6 months	086104C	\$13,200
Graduate Diploma in International Tourism and Hotel Management	March, July, November	1 year	086103D	\$26,400
Master of International Tourism and Hotel Management	March, July, November	2 years	086101F	\$26,400

LIVE, STUDY, EXPLORE

Get more out of your university education by joining a club, playing a sport or participating in the many social and cultural activities that make our campuses such great places to study.



University is an exciting time but it can also be challenging. We are here to help you every step of the way and there are many services that will support you during your studies from extra academic support to a free counselling service, chaplaincy and even a career development service.

NUMBER 1 IN AUSTRALIA FOR INTERNATIONAL STUDENT SUPPORT



LIFE AT SOUTHERN CROSS

ACTIVITIES

UNILIFE

Apart from getting a first-class education, going to university enables you to have fun and make friends for life.

The UniLife team offers professional services and innovative, dynamic programs to enrich your university experience under the banner 'Live, Work, Play'. Their aim is to encourage both your academic success and support your wellbeing, by focusing on the achievement of your educational, professional and personal goals.

Programs and services include coordination of social sports competitions and events; Uni Games and championships; the Elite Athletes and Performers' Program; clubs and societies; and University-wide events such as Orientation, UniLife Awards, snow tour, learn-to-surf camps, and other national competitions.

Visit: scu.edu.au/unilife

JOIN A CLUB OR SOCIETY

Interested in something? You're bound to find others who are too! There are clubs for interest and sporting groups, clubs for women, clubs for men, clubs for Indigenous awareness, clubs for LGBTIQ and clubs for mature-aged students.

The University community joins together to celebrate our diversity and to learn more about each other throughout the year. This includes events relating to Aboriginal and Torres Strait Islander peoples; the Fusion Festival's celebration of cultural diversity and social inclusion; and gender and sexuality diversity.

GET SPORTY

Visit the snow on the annual snow tour or try out individual and team sports. Run in the Gold Coast Airport Marathon or Southern Cross University 10km Run. While sports available at each campus differ, activities include mountain bike riding, swim clubs, water polo, rugby clubs, AFL, soccer, badminton, cricket and netball. The Southern Cross University Fitness Centre and Pool, at the Lismore campus, is a fantastic facility with modern gym equipment and an indoor heated pool, offering a choice of group exercise classes or private training. Our Coffs Harbour campus also has a modern well-equipped Sports and Fitness Centre. Les Mills Virtual exercise classes – a group fitness class played via a projector screen – are available in the Gold Coast campus Virtual Fitness Room 7 days a week – membership is free for staff and students.



**#1 International
Student Support
in Australia**

STUDENT SUPPORT

SCU INTERNATIONAL

SCU International has a dedicated team committed to helping international students from application to acceptance and throughout your studies. Our student support team has been recognised for their outstanding support in the 2018 International Student Support Barometer, an independent benchmarking survey.

AMBASSADORS

Our student ambassadors are carefully selected international students who work with our international student support team. Their role is to provide a point of contact for new students, having experienced the same challenges of living and studying in a new country. Ambassadors mentor students, organise and participate in events and coordinate volunteering. They provide invaluable support for international students coming into an unfamiliar environment, a new culture and language without the familiar support of their families.

UNIMENTOR – CONNECTING STUDENTS

When you are starting out at university as a new student, it can sometimes feel daunting. That's why we have developed the UniMentor program, to help make the transition easier for you. We will connect you with an

experienced student mentor studying in the same discipline area as you. Your UniMentor is in touch with the academic and social challenges of university life, as they have already 'been there' and 'done that'. Regular meetings with your

UniMentor can help you gain positive, empowering advice and support. UniMentors can advise on a range of student issues, from the best way to navigate an online study environment to where to buy text books.

You and your mentor can meet face-to-face, communicate online via email, or catch up on Facebook and other social media sites. The UniMentor program is available to commencing undergraduate on-campus and on-line students and is coordinated by the Equity and Diversity Office. Visit: scu.edu.au/mentor

CHAPLAINCY AND PASTORAL CARE SERVICES

Chaplaincy services at each campus support and promote the spiritual, social and emotional wellbeing of all students from all faiths during the ordinary and the crisis times of life. All conversations with chaplains are confidential. Some emergency financial support is also available to students. Chaplaincy maintains strong links with the faith groups in each community, including established religious groups and denominational churches.

Visit: scu.edu.au/chaplaincy

CREATE CAREERS THAT MATTER

CAREERS AND EMPLOYABILITY TEAM

Give your career the head start it deserves and make contact with the Careers and Employability team from the first year of your studies. The team are here to help you with online CareerSuccess resources on CareerHub and you can also have career counselling.

Career counselling appointments assist you to:

- discover your passion
- choose the right degree
- prepare job applications including for part-time work
- prepare for an interview
- network
- target graduate employers.

CAREER HUB

Browse part-time and graduate job vacancies and the latest online careers resources such as the new CareerSuccess App.

Visit: careerhub.scu.edu.au

GOLD COAST JOBS CLUB

Connect with the Gold Coast Jobs Club for lunchtime expert and peer support to find part-time work and progress your career aspirations.

Visit: liveideas.org.au

BRIGHT FUTURES INDUSTRY MENTORS

Second-year students are matched with an experienced graduate mentor for one session to support your career goals and help you develop industry networks and professional confidence.

VOLUNTEER CONNECT

Discover volunteer work experience opportunities and industry-led real-life projects through Live Ideas

Visit: liveideas.org.au

WORK INTEGRATED LEARNING

Many of our courses include professional placements for work integrated learning and professional experience. See the courses section from page 20 of this guide for information specific to each course.

For more information:

Email: careers@scu.edu.au

Visit: scu.edu.au/careers

WORKING IN AUSTRALIA

International students undertaking an undergraduate or postgraduate qualification can work a maximum of 40 hours per fortnight during session, and unlimited hours during holidays and non-compulsory study sessions. PhD or Masters by research students can work unlimited hours throughout the year.



ACCOMMODATION



GOLD COAST

The Gold Coast offers private housing options, from full board with private residents, to hostel accommodation, units, houses, and sharing a house or unit with others.

LISMORE

SCU Village offers two-to-six-bedroom apartments at three colleges – Orion, Sirius and Magellan. Dedicated resident teams and evening duty managers provide a supportive and friendly environment within walking distance of the campus. Facilities include internet access, movies, on-site laundries and outdoor entertainment areas.

Visit: scuvillage.com.au for more details.

COFFS HARBOUR

SCU Village at Coffs Harbour provides modern, fully furnished, four-bedroom apartments with wireless internet, laundry facilities, and a recreation lounge for group gatherings and organised social events. Dedicated resident teams and evening duty managers provide a supportive and friendly environment within walking distance of the campus.

Visit: scuvillage.com.au for more details.

Homestay provides accommodation with a local Australian family for English language students, and is a great way to improve English skills and learn more about Australian culture, visit: scu.edu.au/englishlanguage

Unistays lists a range of off-campus accommodation in the local area of each campus, visit: unistays.scu.edu.au.

COST OF LIVING

GOLD COAST, LISMORE AND COFFS HARBOUR

Southern Cross University students may benefit from the reduced cost of living compared to Australian capital cities. The table below is a general weekly guide in Australian dollars for a single student living near the Gold Coast, Lismore or Coffs Harbour campuses.

EXPENSE	PRIVATE RENTAL	SCU VILLAGE (LISMORE, COFFS HARBOUR)	HOMESTAY
Accommodation	\$130–\$250 room \$350–\$600 house	\$167–\$209	\$270–\$330*
Food	\$100–\$150	\$100–\$150	Included
Public transport	\$20–\$70	\$20	Included to and from campus
Electricity	\$15 room \$40 house	Included	Included
Water	\$5	Included	Included
Mobile/internet	\$30–\$60	\$30–\$60	\$30–\$60

Updated April 2019. Figures are per week.

* Does not include placement fee.

UNIVERSITY PATHWAYS



Mayu from Japan completed one of our English language programs through SCU College at Lismore campus.

We offer a range of pathways into Southern Cross University degrees through SCU College. Depending on your requirements, the College delivers both English language and academic pathways that provide direct entry into Southern Cross University degrees.

ACADEMIC ENGLISH PATHWAYS



ENGLISH FOR ACADEMIC PURPOSES (EAP)

Entry: IELTS* 3.0–6.5
Duration: 5–50 weeks⁺



**Direct entry
into
Southern Cross
University
Degrees**

ACADEMIC SKILLS PATHWAYS



UNDERGRADUATE QUALIFYING PROGRAM (UQP)

Entry: IELTS* 5.5[#]
Duration: 15 weeks⁺

2 UNITS CREDIT[#]



POSTGRADUATE QUALIFYING PROGRAM (PQP)

Entry: IELTS* 6.0
Duration: 15 weeks

2 UNITS CREDIT



DIPLOMA PATHWAYS



DIPLOMA OF BUSINESS

Entry: IELTS* 5.5
Duration: 1 year

UP TO 8 UNITS CREDIT



DIPLOMA OF SCIENCE

Entry: IELTS* 5.5
Duration: 1 year

UP TO 8 UNITS CREDIT



⁺ Duration will depend on English language level at application.

^{*} View course pages for English language requirements. Refer to www.ielts.org for more information about the International Language Testing System (IELTS).

[#] Nursing stream requires IELTS 7.0 and allied health stream requires IELTS 6.5 and has no advanced standing.

A portrait of Guillaume Basurko, a man with dark curly hair and a slight smile, wearing a blue t-shirt. He is standing in front of a background of large green plants. A semi-transparent white box with a purple accent is overlaid on the right side of the image, containing text about his academic journey.

Guillaume Basurko - France

**English for Academic Purposes graduate
Graduate Diploma of Indigenous Knowledge
student**

Having worked as an engineer for non-government organisations in Brazil and Peru, Guillaume's interaction with traditional owners sparked his interest in Indigenous peoples. This led him to Southern Cross University, where he is on track to complete the Graduate Diploma of Indigenous Knowledge through the University's Gnibi College of Indigenous Australian Peoples at Lismore campus.

"Before I could start the degree I had to get an English language qualification to meet the IELTS requirements, so I studied English for Academic Purposes (EAP) at Lismore campus. It was a great course where I learned about referencing, and had to write an essay, a report, an annotated bibliography plus do oral presentations. Doing these assignments and getting really good feedback from the lecturers gave me the confidence to undertake a postgraduate degree in English. The EAP course also introduced me to Southern Cross' online student portal MySCU that has access to course resources, so I was able to jump straight into my postgraduate studies with ease. My goal is to work with Australian Indigenous communities. I'm taking it a step at a time," he said.

ACADEMIC ENGLISH PATHWAYS

ENGLISH FOR ACADEMIC PURPOSES (EAP)

Duration:	5 to 50 weeks
Starts:	See table below
Location:	Gold Coast, Lismore
CRICOS:	064715B
2020 Tuition Fees:	\$450 per week ⁺

Admission requirements: Students will be assigned to an appropriate English language level based on proficiency scores (e.g. SCU College English Language Test, IELTS) presented on application. The student's proficiency is monitored to determine progress. English language of Academic IELTS 3.0 to 6.5 or equivalent.

⁺Plus \$240 enrolment fee.

COURSE OVERVIEW

English for Academic Purposes (EAP) prepares students for study at Southern Cross University. EAP builds on existing English language abilities in reading, writing, speaking and listening. It then develops students' academic and digital literacy practices, including: researching, referencing, note taking, using the Southern Cross University Learning Management System and giving presentations. The length of EAP studies will depend on a student's English language level at application. Successful completion of EAP provides direct entry to a range of Southern Cross University degrees.

EAP 1 Entry to courses with IELTS 5.5 and 6.0

EAP 2 Entry to courses with IELTS 6.5

EAP 3 Entry to courses with IELTS 7.0

	START DATES FOR SESSION 1, 2020	STUDY BREAK
20 weeks	9 Sept 2019 – 7 Feb 2020	23 Dec 2019 – 5 Jan 2020
15 weeks	14 Oct 2019 – 7 Feb 2020	23 Dec 2019 – 5 Jan 2020
10 weeks	18 Nov 2019 – 7 Feb 2020	23 Dec 2019 – 5 Jan 2020
5 weeks	6 Jan – 7 Feb 2020	23 Dec 2019 – 5 Jan 2020

	START DATES FOR SESSION 2, 2020	STUDY BREAK
20 weeks	20 Jan – 12 Jun 2020	14 – 19 Apr 2020
15 weeks	24 Feb – 12 Jun 2020	14 – 19 Apr 2020
10 weeks	30 Mar – 12 Jun 2020	14 – 19 Apr 2020
5 weeks	11 May – 12 Jun 2020	14 – 19 Apr 2020

GENERAL ENGLISH

Duration:	1 to 50 weeks
Starts:	Monday of any teaching week
Location:	Gold Coast, Lismore
CRICOS:	064715B
2020 Tuition Fees:	\$450 per week ⁺

Admission requirements: Students will be assigned to an appropriate English language level based on proficiency scores (e.g. SCU College English Language Test, IELTS) presented on application. The student's proficiency is monitored to determine progress.

⁺Plus \$240 enrolment fee.

COURSE OVERVIEW

General English helps students develop their English speaking, listening, reading and writing skills with a focus on communicative English. Students will have the opportunity to develop their language skills as well as strategies for learning and using English in a range of contexts (e.g. work, holidays). Classes may be mixed-level ability. Homestay is available for students studying the English Language Proficiency program, please refer to scu.edu.au/scucollege for more information.



	START DATES FOR SESSION 3, 2020	STUDY BREAK
20 weeks	25 May – 16 Oct 2020	17 – 23 Aug 2020
15 weeks	29 Jun – 16 Oct 2020	17 – 23 Aug 2020
10 weeks	3 Aug – 16 Oct 2020	17 – 23 Aug 2020
5 weeks	14 Sept – 16 Oct 2020	17 – 23 Aug 2020

ACADEMIC SKILLS PATHWAYS

UNDERGRADUATE QUALIFYING PROGRAM (UQP)

Duration:	15 weeks
Starts:	March, July, November
Total units:	3
Location:	Gold Coast, Lismore
CRICOS:	091558G

2020 Tuition Fees: \$12,840

Admission requirements: Qualification equivalent to Australian Year 11; be a minimum of 18 years Old at the start of the program; and English language comparable to Academic IELTS 5.5 with no band less than 5.0. The nursing and allied health requires an IELTS of 6.5 with no band less than 6.0.

MAJOR AREAS OF STUDY

GOLD COAST STUDY STREAMS	START
Arts	March, July, November
Business (Aviation, Tourism and Hospitality)	March, July, November
Information Technology	March, July, November
LISMORE STUDY STREAMS	START
Business (Aviation, Tourism and Hospitality)	March, July
Engineering	March
Arts	March, July
Science	March
Nursing and Allied Health (Occupational Therapy, Podiatry)	November

COURSE OVERVIEW

The Undergraduate Qualifying Program (UQP) prepares international students for undergraduate study.

The course combines English language and academic skills development with academic, content-based studies. It is designed for international students whose academic qualifications and/or English proficiency levels are slightly below Southern Cross University's entry requirements for undergraduate degrees. This course also offers College Connect Services.

Nursing and Allied Health stream

Students may choose to study a specialised pathway for entry into nursing, occupational therapy and podiatry undergraduate degrees at Lismore campus. Graduates of the UQP in this stream who have an SCU College English Language Test score comparable to Academic IELTS 6.5, with no band less than 6.0, qualify for direct entry into the Bachelor of Occupational Therapy and the Bachelor of Podiatry at Southern Cross University. No advanced standing is included in this pathway.

Graduates of the UQP in this stream who then achieve an official Academic IELTS 7.0, with no band less than 7.0 (or OET/PTE/TOEFL equivalent score), qualify for direct entry into the Bachelor of Nursing at Southern Cross University. No advanced standing is included in this pathway.

ADVANCED STANDING

Students who successfully complete this course will meet the academic and English language requirements for entry into the following degrees with two (2) units of advanced standing: Diploma of Business, Bachelor of Business, Bachelor of Business in Tourism and Hospitality Management, Bachelor of Information Technology, Bachelor of Digital Business, Diploma of Science, Bachelor of Arts or the Bachelor of Digital Media and Communications.

POSTGRADUATE QUALIFYING PROGRAM (PQP)

Duration:	15 weeks
Starts	March, July, November
Total units:	3
Location:	Gold Coast
CRICOS:	091557J

2020 Tuition Fees: \$12,840

Admission requirements: Applicants will need to have completed a full-time, three-year, higher education sector, post-secondary (post-Year 12) study qualification or equivalent; and English language comparable to Academic IELTS 6.0 with no band less than 5.5#.

#Comparable scores includes SCU College placement test scores, Cambridge English: Proficiency or Advanced, and TOEFL PBT. Refer to: scu.edu.au/englishskills

STUDY STREAMS	START
Master of Business Administration (MBA)	March, July, November
Master of Professional Accounting (MPA)	March, July, November
Master of International Tourism and Hotel Management (MITHM)	March, July, November
Master of Engineering Management, Master of Business Administration (MEM,MBA)	March, November
Master of Information Technology	March, November

COURSE OVERVIEW

The Postgraduate Qualifying Program (PQP) develops study skills at the postgraduate level. It is designed for international students whose academic qualifications are slightly below Southern Cross University's entry requirements for postgraduate degrees.

ADVANCED STANDING

Students who successfully complete the course will meet the academic and English language requirements for entry into the Master of Business Administration, Master of Professional Accounting, Master of International Tourism and Hotel Management, Master of Information Technology and the Master of Engineering Management, Master of Business Administration and will gain two (2) units of advanced standing in these courses.

DIPLOMA PATHWAYS



These courses are offered through SCU College. We understand that students have diverse experiences and ways of learning and offers additional tailored workshops and tuition help. Students can also interact with their peers through the College Connect service.

DIPLOMA OF BUSINESS

Duration:	1 year
Starts:	March, July, November
Total units:	8
Location:	Gold Coast
CRICOS:	079231K
2020 Tuition Fees:	Unit \$3,350 Annual \$26,800
Admission requirements:	Qualification equivalent to an Australian Year 12 with the required entry grade; and English language comparable to Academic IELTS 5.5 and no less than 5.5 in writing and no less than 5.0 in all other bands.

COURSE OVERVIEW

The Diploma of Business covers all three core skills units and five of the eight core units of Southern Cross University's Bachelor of Business. Topics could include accounting, finance, economics, business law, statistics, marketing, management, ethics and sustainability.

COURSE OUTCOMES

Graduates of the Diploma of Business may find employment in general areas of business including accounting, finance and marketing.

Successful graduates of the Diploma of Business are guaranteed entry and up to 8 units of credit towards a linked Southern Cross degree in business, tourism and hospitality management, convention and event management, digital business or information technology.

ADVANCED STANDING

Successful graduates of the Diploma of Business will be eligible to gain one year of advanced standing towards the Bachelor of Business, Bachelor of Business in Tourism and Hospitality Management, Bachelor of Digital Business, or Bachelor of Information Technology.

DIPLOMA OF SCIENCE

Duration:	1 year
Starts:	March
Total units:	8
Location:	Lismore
CRICOS:	086408J
2020 Tuition Fees:	Unit \$3,950 Annual \$31,600
Admission requirements:	Qualification equivalent to an Australian Year 12 with the required entry grade; and English language comparable to Academic IELTS 5.5 and no less than 5.5 in writing and no less than 5.0 in all other bands.

COURSE OVERVIEW

The Diploma of Science will prepare students with a grounding in scientific knowledge and skills and a taste of the many opportunities that science provides. Students will learn the language and nature of science and mathematics, and will be able to follow their interests in specific areas of science.

COURSE OUTCOMES

Graduates of the Diploma of Science may find work in para-professional roles, including positions as field assistants, laboratory assistants and environmental monitoring officers.

The Diploma is a pathway to linked Bachelor degrees in science, environmental science, marine science and management, forest science and management, civil engineering, coastal systems engineering or mechanical engineering with up to 8 units of credit, depending on course and units taken.

ADVANCED STANDING

The Diploma can offer up to one year of credit, depending on course and units taken, into linked Bachelor degrees in science, environmental science, marine science and management, forestry science and management, civil engineering (Honours), and mechanical engineering (Honours).

ARTS, HUMANITIES & SOCIAL SCIENCES

Curious, creative, connected. Turn your interests into a career with opportunities around the corner and around the world.

BACHELOR OF ARTS

BACHELOR OF SOCIAL WELFARE

MASTER OF SOCIAL WORK (PROFESSIONAL QUALIFYING)



Craig Blandon

**Bachelor of Social Welfare graduate
Master of Social Work (Professional Qualifying)
student**

Peer support officer, Momentum Collective

For Craig Blandon, helping people is in his DNA. After a career as a NSW firefighter spanning more than 14 years, Craig is currently completing his Master of Social Work (Professional Qualifying) at Southern Cross University.

Colleagues seeking his advice on issues at work was a catalyst for Craig to look at upskilling. "I found that a few of my work colleagues were coming up to me and just wanting to have a chat about certain incidents and I thought well, at the moment I'm not really qualified to do that," he says.

He currently divides his time between working as a firefighter and as peer support at Lismore-based Momentum Collective, an organisation that provides support with complex and difficult issues of domestic family violence, homelessness, and mental health.

"I've always enjoyed learning. If I knew I could have handled my studies and work as a firefighter, I would have done this a long time ago. I just didn't think that university was for me at all.

"Attaining my Masters and professionally qualifying as a social worker is my goal. I'm really looking forward to working further in the mental health space."

BACHELOR OF ARTS

Duration: 3 years

Starts: March, July

Total units: 24

Location: Lismore

CRICOS: 016183A

2020 Tuition Fees: Unit \$3,350 | Annual \$26,800

Admission requirements: Qualification equivalent to an Australian Year 12 with the required entry grade; and English language comparable to Academic IELTS 6.0 with no band less than 5.5.

COURSE OVERVIEW

The Bachelor of Arts enables critical thinking, community engagement and creative practices. It is one of the most flexible degrees on offer, with the possibility of choosing majors and minors from more than 20 diverse subject areas.

Majors in humanities and social sciences provide an overview of human society and social relationships. Majors in creative arts provide opportunities for students to develop practical or theoretical skills. Traditional arts subjects can be combined with some science majors, as well as vocationally-oriented majors in law, tourism or psychology.

PROFESSIONAL PLACEMENT

Students can undertake placements and learning opportunities in the community through a number of units and assessments.

CAREER OUTCOMES

There are exciting career opportunities for graduates in communication industries, community relations, journalism, cultural policy, management and administration, publishing, public service, multimedia design, creative and cultural industries, politics and social justice and human rights.

PATHWAYS INTO THIS COURSE



BACHELOR OF SOCIAL WELFARE

Duration: 3 years

Starts: March, July

Total units: 24

Location: Gold Coast

CRICOS: 082681B

2020 Tuition Fees: Unit \$3,350 | Annual \$26,800

Admission requirements: Qualification equivalent to an Australian Year 12 with the required entry grade; and English language comparable to Academic IELTS 6.5 with no band less than 6.0.

COURSE OVERVIEW

The Bachelor of Social Welfare provides the theoretical and practical foundations for work in the human services sector. Students gain skills in case management, community development, counselling, social research, policy work, advocacy, and grief and loss counselling.

MAJOR AREAS OF STUDY

Working with children and youth

- Health and disability
- Indigenous studies
- Mental health
- No major option – choose three core units from other majors plus four elective units from any undergraduate degree offered by the University.

PROFESSIONAL PLACEMENT

Students complete 400 hours of supervised on-the-job training in a range of organisations to prepare for a career in social welfare. Visit: scu.edu.au/healthplacements for information about placement prerequisites and inherent requirements.

CAREER OUTCOMES

Graduates of this course will have opportunities to use their transferable skills in human services careers that might include government and non-government positions in fields such as child protection, disability services, housing services, youth work, aged care, alcohol and drug rehabilitation, community engagement, mental health services, and domestic violence services.

The course also provides a pathway to the Southern Cross Master of Social Work (Professional Qualifying) to qualify as a social worker.

PROFESSIONAL RECOGNITION

The course is accredited by the Australian Community Workers Association (ACWA). Graduates are eligible to join ACWA.

PATHWAYS INTO THIS COURSE





5-star student support, learning resources, median starting salary and skills development in **HUMANITIES, CULTURE & SOCIAL SCIENCES**



for **SOCIAL SCIENCES**
(Times Higher Education World University Rankings 2019).

MASTER OF SOCIAL WORK (PROFESSIONAL QUALIFYING)

Duration:	2 years
Starts	March
Total units:	16
Location:	Gold Coast
CRICOS:	082686G

2020 Tuition Fees: Unit \$3,350 | Annual \$26,800

Admission requirements: Qualification equivalent to an Australian Bachelor degree and prior study in the social sciences, psychology or related fields; and English language comparable to Academic IELTS 7.0 with no band less than 6.5.

COURSE OVERVIEW

The Master of Social Work (Professional Qualifying) is an accredited qualification for social workers in Australia. This course is suited to applicants who have undertaken prior study in the social sciences, social welfare, psychology, or related fields.

Core content includes child protection, cross-cultural practice, mental health work, and work with people from Indigenous communities. It covers essential theories and methods of social work practice including effective practice in working with individuals, groups and communities. Students are also exposed to key knowledge in social policy and the law to advance the rights of clients and community members.

PROFESSIONAL PLACEMENT

Students undertake 1,000 hours of supervised professional placement in two separate organisations. Placements involve a minimum of three days per week.

Visit: scu.edu.au/healthplacements for information about placement prerequisites and inherent requirements.

CAREER OUTCOMES

Graduates of this degree will qualify as social workers in Australia. Graduates may also be eligible to apply to work as social workers overseas.

Graduates will be suited to employment in a wide range of jobs in the health and community services sectors. These may include Centrelink, public and private hospitals, child protection agencies, Australian Defence Force, domestic violence services, housing and homelessness agencies, aged care and disability services, mental health agencies, family counselling agencies, rehabilitation services and private practice.

PROFESSIONAL RECOGNITION

This is an Australian Association of Social Workers AASW-accredited qualification. It is an entry qualification into the social work profession and meets the Australian Social Work Education and Accreditation Standards.

PATHWAYS INTO THIS COURSE



BUSINESS & TOURISM

Got your finger on the pulse with ideas for today... and tomorrow? Get the practical skills you need to build a career in fast-moving industries with a global focus.

BACHELOR OF ACCOUNTING

BACHELOR OF BUSINESS

**BACHELOR OF BUSINESS (MAJOR IN
AVIATION MANAGEMENT)**

GRADUATE DIPLOMA IN ACCOUNTING

MASTER OF PROFESSIONAL ACCOUNTING

GRADUATE DIPLOMA IN BUSINESS

MASTER OF BUSINESS ADMINISTRATION

**MASTER OF INTERNATIONAL TOURISM AND HOTEL
MANAGEMENT, MASTER OF BUSINESS ADMINISTRATION**

DOCTOR OF BUSINESS ADMINISTRATION

**BACHELOR OF BUSINESS IN CONVENTION
AND EVENT MANAGEMENT**

**BACHELOR OF BUSINESS IN TOURISM
AND HOSPITALITY MANAGEMENT**

BACHELOR OF BUSINESS IN HOTEL MANAGEMENT

**GRADUATE DIPLOMA IN INTERNATIONAL TOURISM AND
HOTEL MANAGEMENT**

**MASTER OF INTERNATIONAL TOURISM AND HOTEL
MANAGEMENT**



Militsa Antonova

**Bachelor of Business in International
Hospitality Management graduate**

**Complex Marketing Specialist, Melbourne
Marriott and Four Points by Sheraton**

Making people happy is part of the job for Southern Cross University graduate, Militsa Antonova. “The reason why I chose to study tourism and hospitality is because it is a positive industry,” she says.

“My degree has definitely helped me in shaping where I am today.”

Starting as a waitress and progressing through the ranks at the Marriott Surfers Paradise Resort on the Gold Coast, Militsa is currently the Complex Marketing Specialist at the Melbourne Marriott and Four Points By Sheraton Melbourne Docklands.

“With a degree like hospitality and tourism, you can go anywhere you can imagine. Think broadly, but most importantly think big.”

BACHELOR OF ACCOUNTING

Duration:	3 years
Starts:	March, July, November (November intake Gold Coast only)
Total units:	24
Location:	Gold Coast, Lismore
CRICOS:	092940E

2020 Tuition Fees: Unit \$3,350 | Annual \$26,800

Admission requirements: Qualification equivalent to an Australian Year 12 with the required entry grade; and English language comparable to Academic IELTS 6.0 with no band less than 5.5.

COURSE OVERVIEW

Success in business is built on strong decision-making, understanding of performance and anticipation of future challenges. The Bachelor of Accounting will prepare students for a wide range of careers, including as a chartered accountant, enabling them to understand challenging business situations from the inside out and to develop strategic responses.

The course includes core units in taxation, financial services, law, marketing and communication with elective units in advanced taxation, human resources, competitive strategy, business environment and law.

CAREER OUTCOMES

Graduates will have the skills and knowledge to manage their own accounting practice. They may also find employment in areas such as financial and business advisory services, tax, business consulting, business planning, business valuations, employee relations, estate and trust planning, forensic accounting and sustainability strategy development.

PROFESSIONAL RECOGNITION

This course is accredited by Chartered Accountants Australia and New Zealand, CPA Australia and the Institute of Public Accountants.

Subject to the choice of specific units, this degree fulfils the educational requirements for registration as a BAS Agent and a Tax Agent by the Tax Practitioners Board and for financial advisers as determined by Australian Securities and Investments Commission Regulatory Guide 146 (RG146 Registration).

PATHWAYS INTO THIS COURSE

EAP
1

92%

of our **BUSINESS** graduates are employed shortly after graduation
(Quality Indicators for Learning and Teaching 2018)

BACHELOR OF BUSINESS

Duration:	3 years
Starts:	March, July, November (November intake Gold Coast only)
Total units:	24
Location:	Gold Coast, Lismore
CRICOS:	016157C

2020 Tuition Fees: Unit \$3,350 | Annual \$26,800

Admission requirements: Qualification equivalent to an Australian Year 12 with the required entry grade; and English language comparable to Academic IELTS 6.0 with no band less than 5.5.

COURSE OVERVIEW

The Bachelor of Business develops the practical skills for decision-making in a modern business context and the capability to recognise and act on opportunities.

The course includes foundational business units in law, accounting, economics, management, marketing and statistics with the possibility of specialising through electives and one or two majors in the following areas.

- Accounting
- Finance
- Human resource management
- International business
- Management
- Marketing.

PROFESSIONAL PLACEMENT

Students may choose, as electives, one or two double-weighted internship units.

CAREER OUTCOMES

Graduates of the Bachelor of Business gain the professional, critical thinking and communication skills to run their own business or to pursue career opportunities in a broad range of sectors, including marketing, product management, investment, finance and more.

PROFESSIONAL RECOGNITION

The accounting major is accredited by Chartered Accountants Australia and New Zealand and CPA Australia. Students may apply for membership of the Institute of Public Accountants. The finance major is aligned with the Australian Securities and Investments Commission RG146 accreditation requirements and Southern Cross University provides authorised assessment for certification. Students are eligible to join the Australian Institute of Management.

PATHWAYS INTO THIS COURSE



BACHELOR OF BUSINESS (MAJOR IN AVIATION MANAGEMENT)

Duration:	3 years
Starts:	March, July, November
Total units:	16*
Location:	Gold Coast
CRICOS:	089780J Joint delivery with Airways Aviation

2020 Tuition Fees: Unit \$3,350 | Annual \$26,800

Admission requirements: Qualification equivalent to an Australian Year 12 with the required entry grade; and English language comparable to Academic IELTS 6.0 with no band less than 5.5.

* Conditional upon 8 units of advanced standing to be granted on successful completion of the Diploma of Aviation (CPL) and Diploma of Aviation (IR) in Year 2.

COURSE OVERVIEW

Stay one step ahead and combine a university qualification with a Commercial Pilot Licence. Southern Cross University and Airways Aviation are offering this unique opportunity for students to complete a Bachelor of Business degree and a Diploma of Aviation (Commercial Pilot Licence – Aeroplane) and Diploma of Aviation (Instrument Rating) over three years on the beautiful Gold Coast.

Southern Cross University is located close to the Gold Coast airport with views to the Pacific Ocean and airport runway. Airways Aviation's Gold Coast Academy is situated within the Gold Coast Airport aerodrome, with purpose-built training facilities and a modern fleet of aircraft and highly qualified trainers.

PATHWAYS INTO THIS COURSE



YEAR 1

Bachelor of Business
Southern Cross University

YEAR 2

Diploma of Aviation
(Commercial Pilot Licence – Aeroplane)

Diploma of Aviation
(Instrument Rating)



CRICOS Provider: 00296A

YEAR 3

Bachelor of Business
Southern Cross University



GRADUATE DIPLOMA IN ACCOUNTING

Duration:	1 year
Starts:	March, July, November
Total units:	8
Location:	Gold Coast
CRICOS:	055689G
2020 Tuition Fees:	Unit \$3,650 Annual \$29,200
Admission requirements:	Qualification equivalent to an Australian Bachelor degree; and English language comparable to Academic IELTS 6.5 overall.

COURSE OVERVIEW

The Graduate Diploma in Accounting from Southern Cross University provides the foundational knowledge to begin a career path in accounting.

Subjects covered include business accounting, information systems, financial reporting, contemporary issues in accounting, as well as management accounting, legal studies, finance, economics and quantitative analysis.

CAREER OUTCOMES

Completion of this course opens opportunities in a variety of professional roles in the accounting and finance industry, including business accounting, auditing and financial services. The course will also enhance the financial knowledge and skills of business owners and managers in all industries.

This is a pathway course to further postgraduate study. Graduates receive eight units of credit towards a Master of Professional Accounting, a professional qualification which is accredited by CPA Australia and Chartered Accountants Australia and New Zealand.

PATHWAYS INTO THIS COURSE



MASTER OF PROFESSIONAL ACCOUNTING

Duration:	2 years
Starts:	March, July, November
Total units:	16
Location:	Gold Coast
CRICOS:	078675A
2020 Tuition Fees:	Unit \$3,650 Annual \$29,200
Admission requirements:	Qualification equivalent to an Australian Bachelor degree; and English language comparable to Academic IELTS 6.5 overall.

COURSE OVERVIEW

The Master of Professional Accounting (MPA) – with studies across taxation law, auditing or corporate governance – fulfils the academic pre-requisites for registration as a professional accountant in Australia.

The MPA comprises a core sequence of units and includes study in the following areas: business accounting, accounting information systems, financial reporting, management accounting, economics, quantitative analysis, company and commercial law, finance, accounting, theory and research.

Students also study advanced topics in accounting such as taxation law and practice, auditing and assurance and corporate governance. Management skills are honed through study of communications and a number of electives.

PROFESSIONAL PLACEMENT

A key feature of the MPA program is the opportunity to undertake a double-weighted industry research project that students can apply to their current or future workplace.

CAREER OUTCOMES

The global accounting profession has high employment demand, offering MPA graduates the opportunity to seek employment in a range of industries in Australia and abroad.

Graduates of the MPA are equipped to work in business, government and not-for-profit organisations in accounting, financial services and management positions. Management roles and activities undertaken by graduates include developing financial plans, preparing and certifying financial reports, conducting audits, advising company directors, shareholders and clients.

PROFESSIONAL RECOGNITION

The Master of Professional Accounting is accredited by CPA Australia and Chartered Accountants Australia and New Zealand.

Graduates may also be eligible to apply for admission to the Institute of Public Accountants.

PATHWAYS INTO THIS COURSE



GRADUATE DIPLOMA IN BUSINESS

Duration:	1 year
Starts:	March, July, November
Total units:	8
Location:	Gold Coast
CRICOS:	079661K

2020 Tuition Fees: Unit \$3,650 | Annual \$29,200

Admission requirements: Qualification equivalent to an Australian Year 12 with the required entry grade; and English language comparable to Academic IELTS 6.0 with no band less than 5.5.

COURSE OVERVIEW

The Graduate Diploma in Business develops core skills for responding to business challenges, preparing students with the critical thinking, research and entrepreneurial skills for decision making at a senior level.

The course includes study in financial analysis and budget control, marketing concepts such as relationship marketing, consumer behaviour, and market systems and their limitations, including impacts of government policy on business environments.

Students also develop an understanding of organisational behaviour, administrative hierarchy, job design, international business, strategic and project management, communication, leadership and teamwork in the contemporary organisation.

CAREER OUTCOMES

The Graduate Diploma in Business develops the ability to run and manage a business, or to move into a management role. Graduates are equipped to undertake mid-level management roles in a broad spectrum of industries.

MASTER OF BUSINESS ADMINISTRATION

Duration:	2 years
Starts:	March, July, November
Total units:	16
Location:	Gold Coast
CRICOS:	079662J

2020 Tuition Fees: Unit \$3,650 | Annual \$29,200

Admission requirements: Qualification equivalent to an Australian Bachelor degree; and English language comparable to Academic IELTS 6.5 overall.

COURSE OVERVIEW

The Master of Business Administration (MBA) is an internationally recognised qualification that develops business knowledge and practical skills to help graduates advance their careers in today's competitive global markets.

Students complete 12 core units and select either a specialisation, which includes an industry research project, or two elective units in addition to the industry research project. By studying a specialisation, candidates build substantial expertise in an area to complement the general management applications they learn in the core units.

Specialisations include: accounting; managing and leading people; tourism and hospitality management; and research.

Advanced standing may apply to students who have completed relevant undergraduate and postgraduate study.

CAREER OUTCOMES

The MBA equips graduates for managerial roles across a broad spectrum of industries in the public and private sectors.

Graduates might find management roles in areas such as accounting, information and knowledge management, human resource management, health services management and tourism and hotel management.

PATHWAYS INTO THIS COURSE



PATHWAYS INTO THIS COURSE



MASTER OF INTERNATIONAL TOURISM AND HOTEL MANAGEMENT, MASTER OF BUSINESS ADMINISTRATION

Duration:	2 years
Starts:	March, July, November
Total units:	16
Location:	Gold Coast
CRICOS:	097604C

2020 Tuition Fees: Unit \$3,650 | Annual \$29,200

Admission requirements: Qualification equivalent to an Australian Bachelor degree; and English language comparable to Academic IELTS 6.5.

COURSE OVERVIEW

This double degree is specifically designed to give graduates a competitive edge in a dynamic and diverse industry that offers opportunities to travel and work in some of the most attractive destinations in the world.

The course combines advanced subjects in business and tourism management with the core business knowledge and management skills development of a MBA, including entrepreneurship and marketing, accounting and management, tourism planning, systems and contemporary hotel management.

An Industry Research Project unit provides an opportunity for students to demonstrate self-motivation and discipline in determining and developing their own study project. This project develops students' research enquiry and skills through a scholarly piece of work that explores a topic of individual interest in-depth.

PROFESSIONAL PLACEMENT

As part of this course, students may choose to undertake a 300-hour internship (equivalent to two units) in either a paid or volunteer role. This practical experience, combined with theoretical understanding, enhances the learning experience for students who have a professional and personal interest in this high growth area.

CAREER OUTCOMES

Graduates are well-suited to senior management positions in resorts, hotels, government tourism bodies, non-profit, destination marketing, and tourism organisations, airlines, convention and event operators and other special interest tourism businesses.

PATHWAYS INTO THIS COURSE



86%

of our **TOURISM** graduates are employed shortly after graduation
(Quality Indicators for Learning and Teaching 2018)

DOCTOR OF BUSINESS ADMINISTRATION

Duration:	3 years
Starts:	March, July, November
Total units:	24
Location:	Gold Coast, Lismore
CRICOS:	064045B

2020 Tuition Fees: Unit \$3,650 | Annual \$29,200

Admission requirements: Qualification equivalent to an Australian Bachelor degree with first or second class Honours or Master degree; and English language comparable to Academic IELTS 6.5. Applications are processed through the Graduate School at Southern Cross University.

COURSE OVERVIEW

The Doctorate of Business Administration (DBA) is a research-based management program that comprises a mix of coursework and independent research.

It is designed to allow high-achieving business managers, business owners and senior public servants who possess a Masters degree to develop their research skills and to develop a research thesis that will have practical implications for the student's industry sector or individual business.

While this course has no majors, it does include postgraduate studies in critical literature review, introduction to research methods, qualitative or quantitative methods and research proposal development along with thesis research units relevant to the course

CAREER OUTCOMES

Graduates of the DBA may work in a variety of high-level managerial and research positions in private and public sector organisations.

Business owners and managers, as well as senior managers and researchers have the opportunity to expand their career development significantly with the pursuit of original investigation, scholarship or professional practice.

PATHWAYS INTO THIS COURSE



BACHELOR OF BUSINESS IN CONVENTION AND EVENT MANAGEMENT

Duration:	3 years
Starts:	March, July, November
Total units:	24
Location:	Gold Coast
CRICOS:	082689E

2020 Tuition Fees: Unit \$3,350 | Annual \$26,800

Admission requirements: Qualification equivalent to an Australian Year 12 with the required entry grade; and English language comparable to Academic IELTS 6.0 with no band less than 5.5.

COURSE OVERVIEW

The Bachelor of Business in Convention and Event Management positions graduates at the centre of the fast growing events industry. Students acquire the skills and knowledge required to pursue a career in the management, planning and marketing of corporate events, conventions and meetings, festivals and special events.

Core units develop foundational knowledge in research, management and marketing of events and include advanced studies in festival and special events planning; event operations management; facility and risk management; production planning and management; and convention and exhibition planning with the option to specialise through the selection of electives.

PROFESSIONAL PLACEMENT

This course includes a compulsory internship program, which provides students with a block of practical workplace experience during their final study session in a hospitality, event or tourism organisation in Australia or overseas. Students may also undertake an optional international exchange program in second year.

CAREER OUTCOMES

Graduates are suited to professional positions in conference organisation, trade fair and exhibition development, event or destination marketing, corporate meeting planning, event and concert production, festival direction, event planning, and/or sponsorship coordination.

BACHELOR OF BUSINESS IN HOTEL MANAGEMENT

Duration:	3 years
Starts:	March, July, November
Total units:	24
Location:	The Hotel School Sydney, The Hotel School Melbourne
CRICOS:	086102E

2020 Tuition Fees: Unit \$3,450 | Annual \$27,600

Admission requirements: Qualification equivalent to an Australian Year 12 with the required entry grade; and English language comparable to Academic IELTS 6.0 with no band less than 5.5. Applicants will be required to undertake an interview.

COURSE OVERVIEW

This course will prepare you to be a global leader in the hotel industry. You will gain core business knowledge such as marketing, finance, and human resources management along with specialist industry skills in service design and innovation, accommodation operations, food and beverage management, asset protection and security. You will have the opportunity to learn from management and hotel operations experts and work with fellow students from a broad range of backgrounds and with similar ambitions.

This course is delivered at The Hotel School Sydney and The Hotel School Melbourne as a partnership between Southern Cross University and Mulpha Australia. Mulpha Australia has a property portfolio that includes the InterContinental Sydney, Hayman Island, InterContinental Sanctuary Cove Resort, Salzburg Apartments, Marritz Alpine and Bimbagen Estate.

PROFESSIONAL PLACEMENT

Due to the close ties between the Hotel School and the hotel industry we are able to include a compulsory internship program in this course. This highly successful program provides you with a block of relevant and practical workplace experience that further enhances your career prospects.

CAREER OUTCOMES

Graduates undertake a variety of professional positions in the hotels, hospitality and service management sector in Australia and overseas. These include management positions in hotels and resorts, human resources, marketing, front office, food services, food and beverage, events and conferences.

PATHWAYS INTO THIS COURSE



5-star teaching quality and **No. 1** in Australia for educational experience, graduate employment & learning resources in **TOURISM AND HOSPITALITY**

BACHELOR OF BUSINESS IN TOURISM AND HOSPITALITY MANAGEMENT

Duration:	3 years
Starts:	March, July, November (November intake Gold Coast only)
Total units:	24
Location:	Gold Coast, Coffs Harbour
CRICOS:	085172K

2020 Tuition Fees: Unit \$3,350 | Annual \$26,800

Admission requirements: Qualification equivalent to an Australian Year 12 with the required entry grade; and English language comparable to Academic IELTS 6.0 with no band less than 5.5.

COURSE OVERVIEW

This course provides you with the skills and knowledge to succeed as a professional in the growing tourism, hospitality and event management sectors. You will have the opportunity to select a major and learn from experts in the fields of tourism, hospitality and event management and work with your fellow students on projects about improving the environmental impacts of tourism, changing tourist behaviours, planning music festivals, enhancing customer service designs, streamlining hotel operations and the most recent innovations in the sector.

You will also learn key business concepts such as marketing, finance, and human resources management that provides you with a foundation to be a highly successful entrepreneur in the global tourism, hospitality and event management industry.

This course will prepare you for a successful and rewarding career and offers you the option to undertake an international exchange program to broaden your knowledge and experience other cultures and ways of life.

MAJOR AREAS OF STUDY

Students may select a major from the following:

- Event management
- Hospitality management
- Tourism management.

PROFESSIONAL PLACEMENT

Southern Cross University has close ties with the tourism, hospitality and events industries. This course includes a 14-week internship, providing you with a block of relevant and practical workplace experience in Australia or overseas.

CAREER OUTCOMES

Graduates undertake a variety of professional positions in tourism, hospitality and event management organisation. These are global careers in areas such as tourism planning, tourist attractions and theme parks, eco-tourism, festival planning, hotel and resort management, casino management and restaurant operations.

PATHWAYS INTO THIS COURSE



GRADUATE DIPLOMA IN INTERNATIONAL TOURISM AND HOTEL MANAGEMENT

Duration:	1 year
Starts:	March, July, November
Total units:	8
Location:	Gold Coast, The Hotel School Sydney, The Hotel School Melbourne
CRICOS:	066578A

2020 Tuition Fees: Unit \$3,300 | Annual \$26,400

Admission requirements: Qualification equivalent to an Australian Bachelor degree; and English language comparable to Academic IELTS 6.0 with no band less than 5.5.

COURSE OVERVIEW

The Graduate Diploma in International Tourism and Hotel Management provides strong foundational knowledge in tourism, events or hotel management, for those who are working in the industry and want to improve career advancement prospects, or for those who are interested in a career move to tourism and hospitality.

Subjects include entrepreneurship and marketing, accounting and management, tourism planning and contemporary hotel management to prepare students for work at senior levels in this global and diverse industry.

PROFESSIONAL PLACEMENT

Students can undertake an optional internship to build professional networks and experience.

CAREER OUTCOMES

Graduates will have opportunities across a range of tourism and hotel industry employers.

This course is also a pathway to further postgraduate study. Graduates receive eight units of credit towards the Master of International Tourism and Hotel Management

MASTER OF INTERNATIONAL TOURISM AND HOTEL MANAGEMENT

Duration:	2 years
Starts:	March, July, November
Total units:	16
Location:	Gold Coast, The Hotel School Sydney, The Hotel School Melbourne
CRICOS:	085173J

2020 Tuition Fees: Unit \$3,300 | Annual \$26,400

Admission requirements: Qualification equivalent to an Australian Bachelor degree; and English language comparable to Academic IELTS 6.5 overall.

COURSE OVERVIEW

The Master of International Tourism and Hotel Management is designed for students who wish to advance their careers in senior management of tourism or hospitality operations. It equips graduates with advanced business acumen, management skills and specialised industry knowledge considered essential for managerial-level graduates.

Students study core business management, leadership and communication units then select from a range of elective units including business events management, environmental management, service management, professional development and research. Students also undertake an independent research project towards the end of their degree, to focus on an aspect of tourism that interests them.

PROFESSIONAL PLACEMENT

Students may choose to undertake a 300-hour internship (equivalent to two units) in either a paid or volunteer role. This practical experience, combined with theoretical understanding, enhances the learning experience for students who have a professional and personal interest in this high growth area.

CAREER OUTCOMES

Graduates may move into supervisory or management positions in resorts, hotels, government tourism bodies, non-profit, destination marketing, and tourism organisations, airlines, convention and event operators and other special interest tourism businesses.

PATHWAYS INTO THIS COURSE



PATHWAYS INTO THIS COURSE



DIGITAL MEDIA & IT

Become one of tomorrow's agile digital specialists who can create, deliver and distribute content and resources seamlessly across channels and technologies.



triple

BACHELOR OF DIGITAL BUSINESS

BACHELOR OF DIGITAL MEDIA AND COMMUNICATIONS

BACHELOR OF INFORMATION TECHNOLOGY

MASTER OF INFORMATION TECHNOLOGY



Nick Gerber

Bachelor of Media graduate

Producer at Triple J and ABC radio

Southern Cross media graduate Nick Gerber fell in love with radio when he was a student. "One of our assignments was listening to different programs and trying to work out how they were put together technically and that just really turned me on to radio and particularly Triple J – to work there became my dream," he says.

It was a dream he pursued relentlessly, until he was offered a junior producer position at Triple J. Since then, he has worked on the Hottest 100, the Like a Version segment, as a lead producer on Breakfast with Ben and Liam and even live broadcasting from Splendour in the Grass.

Nick now works as a producer across the Drive and Breakfast programs on Triple J, also filtering callers and lining up talent for Dr Karl's popular science program on ABC radio. "I'd say the most important personal characteristics for a successful career in media are resilience and passion. There are no jobs for life anymore, especially in media, and you have to be ready to adapt."

BACHELOR OF DIGITAL BUSINESS

Duration: 3 years

Starts: March, July

Total units: 24

Location: Gold Coast

CRICOS: 096283A

2020 Tuition Fees: Unit \$3,350 | Annual \$26,800

Admission requirements: Qualification equivalent to an Australian Year 12 with the required entry grade; and English language comparable to Academic IELTS 6.0 with no band less than 5.5.

COURSE OVERVIEW

The Bachelor of Digital Business is one of only two degrees of its kind being offered in Australia. It will prepare students for a career as a digital business specialist, able to unlock technology to improve business performance.

Graduates will be able to combine skills in digital systems and applications, cyber security, data and business analytics and the creation and management of digital business with a practical understanding of technologies, business and law principles to make a strong contribution to many organisations.

MAJOR AREAS OF STUDY

Core units cover management, marketing, business law, web development, entrepreneurship and innovation, e-commerce, user experience, programming and cyber security.

Student choose a major from the following:

- Digital Business
- Internship.

PROFESSIONAL PLACEMENT

Students who choose to study the Internship major undertake workplace experience, in Australia or overseas, within their chosen industry sector.

CAREER OUTCOMES

Graduates from generic business degrees typically work in the areas of advertising, marketing, public relations, product management, international business, human resource management, investment, banking, accounting and finance.

The Bachelor of Digital Business will produce graduates with career opportunities in these areas but also in a broader range of careers including as business analysts, digital marketers, information security professionals, IT strategists and planners, change management professionals, digital transformation professionals, digital strategists, data analysts, digital solutions developers, web developers, systems analysts, and project managers.

PATHWAYS INTO THIS COURSE



BACHELOR OF DIGITAL MEDIA AND COMMUNICATIONS

Duration: 3 years

Starts: March, July

Total units: 24

Location: Lismore

CRICOS: 091527D

2020 Tuition Fees: Unit \$3,350 | Annual \$26,800

Admission requirements: Qualification equivalent to an Australian Year 12 with the required entry grade; and English language comparable to Academic IELTS 6.0 with no band less than 5.5.

COURSE OVERVIEW

Content rules – and digital media specialists are in strong demand in communication and marketing roles across Australia. The Bachelor of Digital Media and Communications prepares you to tell stories that matter, as you develop the creative and production skills for a career in today's fast-paced media environment.

Core units include visual communication and design, digital storytelling, media theory and analysis, news writing and journalism.

PROFESSIONAL PLACEMENT

This course includes a compulsory 100-hour professional placement with the possibility of gaining invaluable workplace experience across the media and communications spectrum: at radio or television stations, in newspapers and publishing houses, on film shoots, at film festivals or in graphic design or post-production companies.

CAREER OUTCOMES

Digital media specialists are in strong demand in media and creative industries with career opportunities in film and TV, radio, newspapers, magazines, online media and graphic design, marketing, advertising and public relations.

PATHWAYS INTO THIS COURSE



5-star student support and median starting salary in **COMMUNICATIONS**

BACHELOR OF INFORMATION TECHNOLOGY

Duration: 3 years

Starts: March, July

Total units: 24

Location: Gold Coast

CRICOS: 019840D

2020 Tuition Fees: Unit \$3,350 | Annual \$26,800

Admission requirements: Qualification equivalent to an Australian Year 12 with the required entry grade; and English language comparable to Academic IELTS 6.0 with no band less than 5.5.

COURSE OVERVIEW

The Bachelor of Information Technology focuses on the development of web-based business applications.

Core units include programming, systems analysis and design, cyber security, database development, networking and communications theory. The course also covers issues confronting the IT industry including employer obligations, employee rights, impacts on society, and future directions of the industry.

MAJOR AREAS OF STUDY

- User experience
- Software development
- Digital enterprise.

PROFESSIONAL PLACEMENT

This course includes optional work placements to gain hands-on experience working with industry, developing information technology responses to business dilemmas.

CAREER OUTCOMES

Graduates can look forward to good employment prospects as a programmer, user-experience designer and developer, systems analyst, database administrator, project manager, web developer, ICT network professional or technical support personnel.

MASTER OF INFORMATION TECHNOLOGY

Duration: 2 years

Starts: March, July, November

Total units: 16

Location: Gold Coast

CRICOS: 097605B

2020 Tuition Fees: Unit \$3,650 | Annual \$29,200

Admission requirements: Qualification equivalent to an Australian Bachelor degree; and English language comparable to Academic IELTS 6.0 with no band less than 5.5. Advanced standing for relevant work experience may apply. Contact the University for more details.

COURSE OVERVIEW

The Master of Information Technology is designed for both IT and non-IT professionals looking to advance their career in a rapidly-evolving industry. The application of IT tools and technologies for transforming businesses and creating new digital businesses is a focus.

The course is underpinned by a strong industry-linked program, entrepreneurship incubation in the University's Digital Enterprise Lab and industry-relevant research. Students will develop their technical, leadership and management skills with advanced coursework and real world projects.

Together with core units in data science, cyber security, software development and user experience, students have the option to tailor their studies with advanced specialist units.

Specialist units include advanced cybersecurity, big data analysis, computational intelligence and machine learning, computer forensics, internet engineering, pervasive and immersive user experience, programming for the internet of things, mobile and cloud systems.

CAREER OUTCOMES

Graduates will be prepared for senior roles with advanced expertise in cyber security, software engineering, user experience and data science.

PATHWAYS INTO THIS COURSE

PQP

EAP
1

PATHWAYS INTO THIS COURSE

UQP

EAP
1

DIP
BUS

85%

of our IT graduates are employed shortly after graduation

(Quality Indicators for Learning and Teaching 2018)

ENGINEERING & SCIENCE

Like to understand how things work and how to solve real world problems?
Make a career out of exploring the boundaries of our physical world.



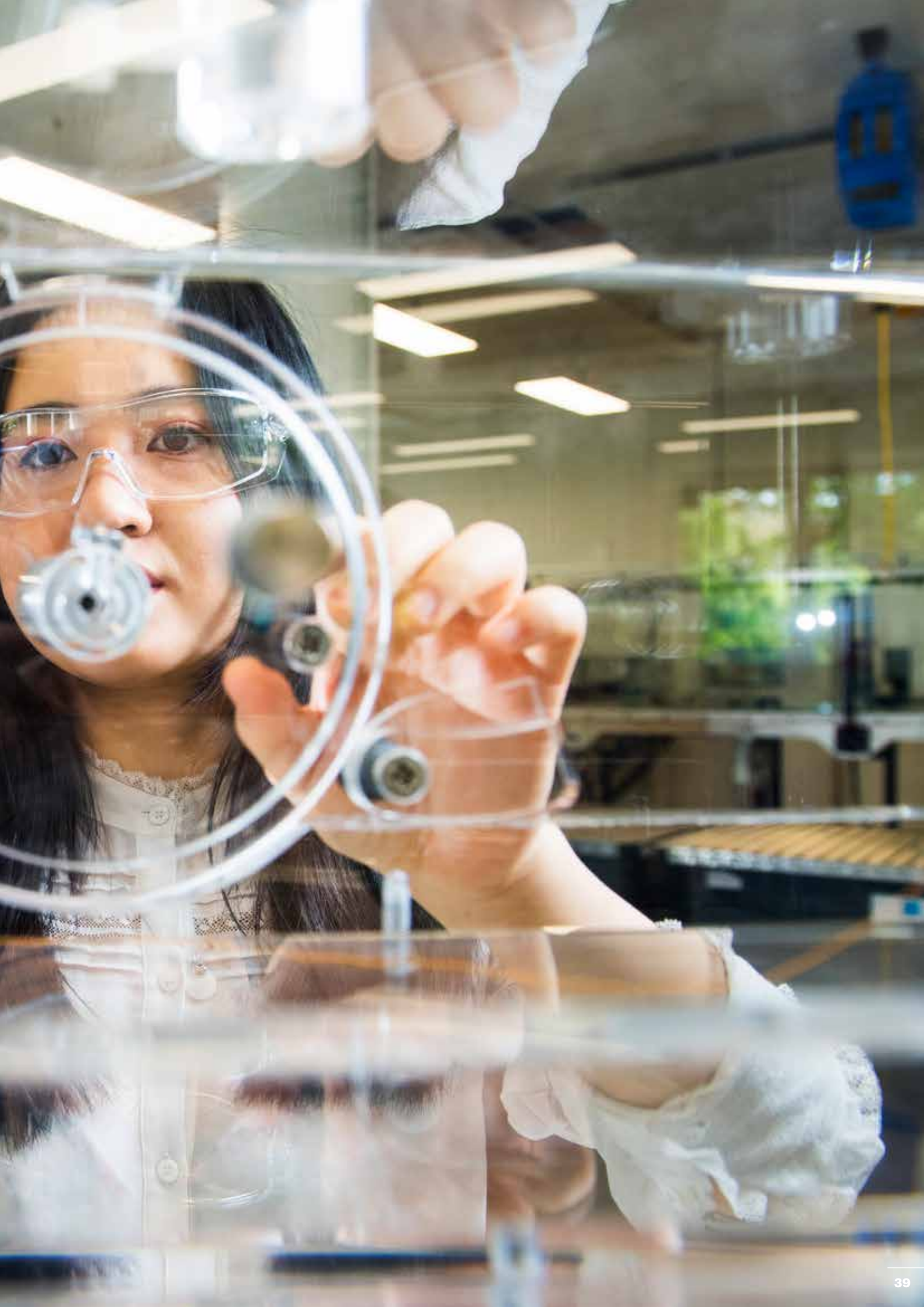
BACHELOR OF ENGINEERING (HONOURS) IN CIVIL ENGINEERING

BACHELOR OF ENGINEERING (HONOURS) IN MECHANICAL ENGINEERING

BACHELOR OF ENGINEERING (HONOURS) IN COASTAL SYSTEMS ENGINEERING

BACHELOR OF SCIENCE

MASTER OF ENGINEERING MANAGEMENT, MASTER OF BUSINESS ADMINISTRATION



BACHELOR OF ENGINEERING (HONOURS) IN CIVIL ENGINEERING

Duration: 4 years

Starts: March, July

Total units: 32

Location: Lismore

CRICOS: 077352F

2020 Tuition Fees: Unit \$4,000 | Annual \$32,000

Admission requirements: Qualification equivalent to an Australian Year 12 with the required entry grade; and English language comparable to Academic IELTS 6.0 with no band less than 5.5.

COURSE OVERVIEW

The Bachelor of Engineering (Honours) in Civil Engineering prepares you for work involving the planning, design, construction and maintenance of critical civil engineering infrastructure such as buildings, roads, bridges, dams, pipelines, transport systems, and water supply and wastewater treatment facilities.

All students undertake a full-year subject in engineering research (thesis unit) in their final year, which enables you to explore the frontiers of engineering development and contribute to new knowledge in your chosen field.

MAJOR AREAS OF STUDY

- General course of study – civil engineering, including construction, project management, hydraulic engineering, water and wastewater engineering, geotechnical engineering, traffic and transport engineering, and environmental engineering.
- Environmental engineering – prepares students with the scientific knowledge and engineering skills needed to understand and assess the impact of an engineering project on the environment.

PROFESSIONAL PLACEMENT

All students are required to undertake a compulsory 60-day industry experience unit in a relevant engineering role.

CAREER OUTCOMES

Graduates of the Bachelor of Engineering (Honours) in Civil Engineering will be qualified civil engineers with specialist skills in demand across multiple sectors and industries globally.

PROFESSIONAL RECOGNITION

This course is fully accredited by Engineers Australia at the level of Professional Engineer. Courses accredited by Engineers Australia at this level are recognised in many different countries worldwide through the Washington Accord.

PATHWAYS INTO THIS COURSE



BACHELOR OF ENGINEERING (HONOURS) IN MECHANICAL ENGINEERING

Duration: 4 years

Starts: March, July

Total units: 32

Location: Lismore

CRICOS: 086409G

2020 Tuition Fees: Unit \$4,000 | Annual \$32,000

Admission requirements: Qualification equivalent to an Australian Year 12 with the required entry grade; and English language comparable to Academic IELTS 6.0 with no band less than 5.5.

COURSE OVERVIEW

The Bachelor of Engineering (Honours) in Mechanical Engineering equips you with the relevant skills, experiences and knowledge for work involving the design and maintenance of machinery, computer-aided design and manufacturing (CAD/CAM), consumer product design, automotive, robotics and control systems, water supply, vibration, acoustics and noise control, heat transfer and refrigeration, energy technology and pollution control.

All students undertake a full-year subject in engineering research (thesis unit) in their final year, which enables you to explore the frontiers of engineering development and contribute to new knowledge in your chosen field.

MAJOR AREAS OF STUDY

This course comprises three main study streams:

- Design and production system engineering
- Thermo-Fluid mechanics and energy systems
- Mechatronics and control systems

PROFESSIONAL PLACEMENT

All students are required to undertake a compulsory 60-day industry experience unit in a relevant engineering role.

CAREER OUTCOMES

Mechanical engineers have broad employment prospects in local and global markets. They can work in diverse industries including heavy machinery, power generation, mining, manufacturing, production planning, automotive, aerospace, medical, environment, building industries, consumer product design and tertiary education.

PROFESSIONAL RECOGNITION

This course has provisional accreditation from Engineers Australia at the level of Professional Engineer and will be assessed for full accreditation at this level in 2021. Courses accredited by Engineers Australia at this level are recognised in many different countries worldwide through the Washington Accord.

PATHWAYS INTO THIS COURSE



BACHELOR OF ENGINEERING (HONOURS) IN COASTAL SYSTEMS ENGINEERING

Duration: 4 years

Starts: March, July

Total units: 32

Location: Lismore

CRICOS: 098590G

2020 Tuition Fees: Unit \$4,000 | Annual \$32,000

Admission requirements: Qualification equivalent to an Australian Year 12 with the required entry grade; and English language comparable to Academic IELTS 6.0 with no band less than 5.5.

COURSE OVERVIEW

The Bachelor of Engineering (Honours) in Coastal Systems Engineering is one of just a few specialist undergraduate professional engineering degrees in Australia to train industry-ready graduates for work in water engineering, coastal engineering and catchment management. The course addresses an increasing need for engineering expertise in these fields.

All students undertake a full-year subject in engineering research (thesis unit) in their final year, which enables you to explore the frontiers of engineering development and contribute to new knowledge in your chosen field.

MAJOR AREAS OF STUDY

- Coastal geochemistry
- Coastal zone management
- Infrastructure design and management.

PROFESSIONAL PLACEMENT

All students are required to undertake a compulsory 60-day industry experience unit in a relevant engineering role.

CAREER OUTCOMES

As a civil or environmental engineer in a range of settings involving systems and infrastructure in the coastal zone, including municipal and government authorities, water supply and management agencies, construction companies, natural resource management organisations, consulting engineering companies, airport authorities, mining companies, irrigation authorities, research organisations, and education organisations.

PROFESSIONAL RECOGNITION

The Bachelor of Engineering (Honours) in Coastal Systems Engineering has provisional accreditation from Engineers Australia at the level of Professional Engineer and will be assessed for full accreditation at this level in 2022. Courses accredited by Engineers Australia at this level are recognised in many different countries worldwide through the Washington Accord.

PATHWAYS INTO THIS COURSE



BACHELOR OF SCIENCE

Duration: 3 years

Starts: March

Total units: 24

Location: Lismore

CRICOS: 086344J

2020 Tuition Fees: Unit \$3,800 | Annual \$30,400

Admission requirements: Qualification equivalent to an Australian Year 12 with the required entry grade; and English language comparable to Academic IELTS 6.0 with no band less than 5.5.

COURSE OVERVIEW

The Bachelor of Science provides a thorough grounding in science as well as the opportunity to specialise in an area of interest through the study of a major.

The degree is ideal for attaining a general overview of science before specialising in a specific course of study. It offers flexibility in subject choices and a wide range of electives.

You will complete core units covering the role science plays in society, environmental information analysis or statistical analysis, and have the choice of an internship or integrated project.

MAJOR AREAS OF STUDY

- Biology
- Engineering
- Environmental chemistry
- Mathematics (not available for June start).

A broad range of electives is also available.

Please note: Some units are only offered online and some require attendance at on-campus workshops.

PROFESSIONAL PLACEMENT

You can elect to complete an eight-week industry internship placement. Interns work with organisations across the science spectrum including local, state or federal government agencies; private consultancies; or business enterprises in Australia or overseas.

CAREER OUTCOMES

Career opportunities exist in both public and private sectors as a resource manager and sustainability adviser and planner, policy developer, biologist, ecologist, health scientist; and in scientific research.

PATHWAYS INTO THIS COURSE



MASTER OF ENGINEERING MANAGEMENT, MASTER OF BUSINESS ADMINISTRATION

Duration: 2 years

Starts: March, July, November

Total units: 16

Location: Gold Coast

CRICOS: 094098G

2020 Tuition Fees: Unit \$3,650 | Annual \$29,200

Admission requirements: Qualification equivalent to a four-year Australian Bachelor degree; and English language comparable to Academic IELTS 6.5 with no band less than 6.0.

COURSE OVERVIEW

The Master of Engineering Management, Master of Business Administration combines the business specialist skills of a Master of Business Administration with the specialist skills of an engineering management program.

The course prepares graduates for the challenges of a managerial position through a range of subjects including strategic asset management planning, commercial research and development processes, economic viability, new product development and commercialisation.

Students develop effective stakeholder engagement practices, and undertake an industry research project in engineering management.

CAREER OUTCOMES

Graduates will have enhanced employment opportunities within organisations seeking engineers with advanced skills in management, technology and problem solving. The course prepares students for senior engineering roles as well as management, leadership or consultant roles within a diverse range of industries.

PROFESSIONAL RECOGNITION

Units undertaken in this course may count towards your continuing professional development (CPD) requirements with Engineers Australia or your relevant professional registering body.

Graduates are eligible to apply for membership with the Australian Institute of Management (AIM).



5-star graduate employment and skills development in **SCIENCE & MATHEMATICS**

89%

graduate employment in **SCIENCE** and **MATHEMATICS**

(Quality Indicators for Learning and Teaching 2018)

**Top
300**

of universities worldwide in **LIFE SCIENCES**

(Times Higher Education World University Rankings 2019)

PATHWAYS INTO THIS COURSE





Sebi Zacheria Abi

Master of Engineering Management, Master of Business Administration graduate

Sebi is from southern India and has five years' experience as a mechanical engineer in the field of aero engines and turbochargers. He chose to study the double degree in engineering management and business administration to build on his existing skills as a mechanical engineer and to gain managerial skills from an engineering perspective, such as asset management and stakeholder engagement that he can apply in the industry.

"The degree at Southern Cross has given me the opportunity to work more closely with people in the industry, to undertake research and to gain applied knowledge. I am sure that with this qualification and my previous experience I can reach my career aspirations in the future," said Sebi.

HEALTH SCIENCES

A career that's about caring and improving lives, with jobs in your neighbourhood and all over the world. Where empathy and skill make all the difference and study is a journey to professional registration.

BACHELOR OF BIOMEDICAL SCIENCE

BACHELOR OF EXERCISE SCIENCE AND PSYCHOLOGICAL SCIENCE

BACHELOR OF PEDORTHICS

BACHELOR OF PODIATRY, BACHELOR OF PEDORTHICS

BACHELOR OF CLINICAL SCIENCES (OSTEOPATHIC STUDIES)

MASTER OF OSTEOPATHIC MEDICINE

BACHELOR OF PSYCHOLOGICAL SCIENCE

BACHELOR OF SPEECH PATHOLOGY

BACHELOR OF OCCUPATIONAL THERAPY

BACHELOR OF PODIATRY

BACHELOR OF SPORT AND EXERCISE SCIENCE

MASTER OF EXERCISE SCIENCE PHYSIOLOGY

Bec Woods

Bachelor of Clinical Sciences and Master of Osteopathic Medicine graduate

Ex-pro surfer and osteopath

Bec Woods started surfing when she was just 12. She qualified for the world tour when she was 19 and was among the world's top female surfers for nine years, a career that saw her travel to the top surf breaks in the world.

A shoulder injury early in her surfing career piqued Bec's interest in studying osteopathy.

"After three or four different therapists it was an osteopath who diagnosed me properly and referred me to a specialist. I saw firsthand how osteopathy can really help people," she says.

She entered Southern Cross as part of the Elite Student Athlete Program and hasn't looked back since, completing her Master of Osteopathic Medicine following her undergraduate studies in osteopathy.

Now a full-time osteopath in Newcastle, Bec combines her new career with her passion for surfing, also hosting surf clinics and appearing as a motivational speaker.

BACHELOR OF BIOMEDICAL SCIENCE

Duration: 3 years

Starts: March

Total units: 24

Location: Gold Coast

CRICOS: 086341A

2020 Tuition Fees: Unit \$3,450 | Annual \$27,600

Admission requirements: Qualification equivalent to an Australian Year 12 with the required entry grade; and English language comparable to Academic IELTS 6.0 with no band less than 5.5.

COURSE OVERVIEW

The Bachelor of Biomedical Science provides you with a scientific understanding of the structure and function of the human body and the interrelationships between health and disease.

Together with foundational sciences, you will explore the intricacies of human health and examine the pathological basis of disease processes by studying human pathophysiology, molecular genetics, immunology, microbiology and neuroscience. You will develop skills in problem-solving, analysis and interpretation of medical and laboratory data, as well as practical skills in laboratory methods.

MAJOR AREAS OF STUDY

Core units include biochemistry, human physiology, anatomy, immunology, neuroscience, microbiology, haematology, genetics, research methods, and other areas relevant to biomedical science.

PROFESSIONAL PLACEMENT

Professional placements of 420 hours provide invaluable workplace experience in health and research facilities, such as pathology labs or medical research labs.

CAREER OUTCOMES

Graduates find positions in biomedical, health, university and government research; hospital, veterinary and pathology laboratories and scientific sales; quality assurance, health departments and pharmaceutical and cosmetic industries.

Graduates may qualify for postgraduate degrees such as pharmacy and physiotherapy, or choose to pursue medicine or other careers.

PATHWAYS INTO THIS COURSE

EAP
1

89%

of our **HEALTH** graduates are employed shortly after graduation
(Quality Indicators for Learning and Teaching 2018)

BACHELOR OF PODIATRY

Duration: 4 years

Starts: March

Total units: 32

Location: Gold Coast

CRICOS: 085519K

2020 Tuition Fees: Unit \$3,450 | Annual \$27,600

Admission requirements: Qualification equivalent to an Australian Year 12 with the required entry grade; and English language comparable to Academic IELTS 7.0 in all bands.

COURSE OVERVIEW

The Bachelor of Podiatry prepares you for entry into professional podiatry practice. Podiatry is a branch of health care devoted to the study, diagnosis and treatment of disorders of the foot, ankle and lower leg.

High-tech laboratories and manufacturing facilities on campus provide contemporary learning environments, complemented by significant blocks of workplace experience.

MAJOR AREAS OF STUDY

Core subjects include anatomy, pathophysiology, pharmacology, psychology and communication. As you move through the course, you study more specialised content including biomechanics, rehabilitation, dermatology, rheumatology and paediatrics.

PROFESSIONAL PLACEMENT

Professional placements of approximately 1,000 hours, preclinical simulation and University clinics build skills and the capacity to work with children and adults, athletes and elderly people to examine sporting injuries, gait, biomechanics and acute foot conditions.

CAREER OUTCOMES

The majority of podiatry employment is in private practice. As a podiatrist graduates also have the opportunity to work in community health settings; in hospitals and with specialised health teams such as in diabetic care; in health promotion and education; with children, athletes and older people; or to undertake research.

PROFESSIONAL RECOGNITION

The Bachelor of Podiatry is accredited with the Australian New Zealand Podiatry Accreditation Council. Graduates can seek national registration as podiatry practitioners with the Podiatry Board of Australia.

Please note: In order to register to practise, the Australian Health Practitioner Regulation Agency standards for English language must be met.

PATHWAYS INTO THIS COURSE

UQP

EAP
3

BACHELOR OF PEDORTHICS

Duration: 3 years

Starts: March

Total units: 24

Location: Gold Coast

CRICOS: 086343K

2020 Tuition Fees: Unit \$3,450 | Annual \$27,600

Admission requirements: Qualification equivalent to an Australian Year 12 with the required entry grade; and English language comparable to Academic IELTS 7.0 with no band less than 6.5.

COURSE OVERVIEW

Pedorthics is a new allied health specialisation that focuses on biomechanics and improving foot function to promote better mobility.

The Bachelor of Pedorthics is the only degree of its kind offered by a university in Australia. It prepares you for a career as a specialist in the design and manufacture of shoes and orthotics to maximise performance of feet and treat lower limb conditions.

MAJOR AREAS OF STUDY

Core units include human anatomy and physiology, orthoses and bracing, lower limb assessment and medicine, biomechanics of gait, entrepreneurship and treatment of the high-risk foot.

PROFESSIONAL PLACEMENT

You undertake approximately 1,000 hours of practical placements in a range of health settings throughout your studies.

CAREER OUTCOMES

Some typical career paths in pedorthics include pain management of issues related to the foot, knee and back, diabetes foot management to prevent limb loss, disability health services, footwear design and manufacture, fashion footwear, paediatric corrective footwear and orthoses and in the sporting industry for elite performance or orthotic support.

PROFESSIONAL RECOGNITION

This course is accredited with the Pedorthic Association of Australia. Suitably qualified members of the Association are eligible for listing on the Australian Register of Pedorthists.

PATHWAYS INTO THIS COURSE



5-star starting salary in
REHABILITATION

BACHELOR OF PODIATRY, BACHELOR OF PEDORTHICS

Duration: 5 years

Starts: March

Total units: 40

Location: Gold Coast

CRICOS: 097466G

2020 Tuition Fees: Unit \$3,450 | Annual \$27,600

Admission requirements: Qualification equivalent to an Australian Year 12 with the required entry grade; and English language comparable to Academic IELTS 7.0 in all bands.

COURSE OVERVIEW

This double degree equips you with the skills to become both a podiatrist and a pedorthist, extending your possibilities in the design and manufacture of footwear and orthotics to treat foot and lower limb conditions.

High-tech laboratories and manufacturing facilities on campus provide contemporary learning environments, complemented by significant blocks of workplace experience.

MAJOR AREAS OF STUDY

You complete subjects from both disciplines that will encourage the development of a broad and coherent theoretical and technical knowledge. These include extensive studies in anatomy with a focus on lower limbs and feet, psychology, orthoses, biomechanics, pharmacology, risk, clinical accountability and clinical reasoning.

PROFESSIONAL PLACEMENT

You complete approximately 2,000 hours of placement activity.

CAREER OUTCOMES

Ideal for careers in both disciplines, and particularly for podiatrists who can extend their practice into the manufacture of medical-grade footwear and other orthotic devices, such as ankle foot orthoses.

PROFESSIONAL RECOGNITION

The Bachelor of Pedorthics is accredited with the Pedorthic Association of Australia. Suitably qualified members of the Association are eligible for listing on the Australian Register of Pedorthists.

The Bachelor of Podiatry is accredited with the Australian and New Zealand Podiatry Accreditation Council. Graduates can seek national registration as podiatry practitioners with the Podiatry Board of Australia.

PATHWAYS INTO THIS COURSE



Southern Cross University has two on-campus Health Clinics at the Gold Coast and Lismore. Many health sciences students undertake their clinical practicums in the Health Clinics, building their professional confidence in a safe and supervised environment renowned for its focus on person-centred and evidence-based healthcare.



BACHELOR OF CLINICAL SCIENCES (OSTEOPATHIC STUDIES)

Duration: 3 years

Starts: March

Total units: 24

Location: Gold Coast, Lismore

CRICOS: 091528C

2020 Tuition Fees: Unit \$3,450 | Annual \$27,600

Admission requirements: Qualification equivalent to an Australian Year 12 with the required entry grade; and English language comparable to Academic IELTS 7.0 in all bands.

COURSE OVERVIEW

The Bachelor of Clinical Sciences (Osteopathic Studies) has a strong clinical focus and provides you with a comprehensive grounding in biomedical science and health.

During the course, you will gain the knowledge and skills required to continue postgraduate study in osteopathic medicine, which is required for registration as an osteopath.

MAJOR AREAS OF STUDY

Core units include the study of advanced levels of anatomy and physiology, particularly the structure and function of the muscular and nervous systems.

PROFESSIONAL PLACEMENT

Professional placements provide you with approximately 320 hours of experience under the supervision of a qualified practitioner in the practice of safe and effective manual therapy and the application of a wide range of treatment and management plans.

You have opportunities to work with a diverse range of patients in areas including injury and illness prevention and management, rehabilitation and health promotion. Clinical practice-based learning is also undertaken at the Southern Cross University Health Clinic, located at the Lismore and Gold Coast campuses.

CAREER OUTCOMES

To become a registered osteopath, you need to successfully complete both the Bachelor of Clinical Sciences (Osteopathic Studies) and the Southern Cross University Master of Osteopathic Medicine. Total duration of both courses is four years. Graduates of the Bachelor degree will receive four units of advanced standing into the Master of Osteopathic Studies.

PATHWAYS INTO THIS COURSE



MASTER OF OSTEOPATHIC MEDICINE

Duration: 2 years

Starts: March

Total units: 16

Location: Lismore

CRICOS: 069872D

2020 Tuition Fees: Unit \$3,700 | Annual \$29,600

Admission requirements: Qualification equivalent to the Bachelor of Clinical Science (Osteopathic Studies); and English language comparable to Academic IELTS 6.0 with no band less than 5.5. Student will also be required to attend an interview.

COURSE OVERVIEW

The Master of Osteopathic Medicine is the second stage of a professional-entry-level program for registration as a practitioner of osteopathic medicine.

Students undertake studies in osteopathic medicine, including advanced diagnosis and management of complex problems; complete clinical practice under supervision in internal and external health facilities; and engage in a research project

PROFESSIONAL PLACEMENT

The Master of Osteopathic Medicine includes about 480 hours of supervised clinical practicums at the Southern Cross University Health Clinic (Gold Coast or Lismore campuses) and in external health clinics and services. External placements provide opportunities to experience a range of community practices and to start to build professional networks that help establish future careers.

Visit: scu.edu.au/healthplacements for information about placement prerequisites and inherent requirements.

CAREER OUTCOMES

Graduates are eligible for registration as osteopaths. In Australia, osteopaths are registered primary care practitioners who are employed in private practice.

PROFESSIONAL RECOGNITION

This course is accredited by the Osteopathy Board of Australia. Graduates of the course are eligible for professional membership with Osteopathy Australia (OA).

Osteopathic services are recognised under all state government statutory workers compensation schemes and motor vehicle accident compensation schemes; under Medicare's Chronic Disease Management Plan items; Departments of Veterans Affairs rebates and most private health insurance schemes.

PATHWAYS INTO THIS COURSE



The Bachelor of Clinical Sciences (Osteopathic Studies) together with the Master of Osteopathic Medicine produce graduates eligible to register as practitioners of osteopathic medicine in Australia. This is the only course in Australia to offer a four year full-time combined duration for both courses.

BACHELOR OF PSYCHOLOGICAL SCIENCE

Duration:	3 years
Starts:	March, July, November (November intake Gold Coast only)
Total units:	24
Location:	Gold Coast, Coffs Harbour
CRICOS:	071464B

2020 Tuition Fees: Unit \$3,700 | Annual \$29,600

Admission requirements: Qualification equivalent to an Australian Year 12 with the required entry grade; and English language comparable to Academic IELTS 6.0 with no band less than 5.5.

COURSE OVERVIEW

The Bachelor of Psychological Science provides the first three years of full-time (or part-time equivalent) study and training required to prepare you for employment in a range of careers that require critical thinking and an understanding of human psychological factors.

The degree focuses on providing a thorough knowledge of the theoretical basis of psychological science and prepares you to conduct an independent research project.

Some second and third-year units involve applied skills while others emphasise areas in experimental psychology, statistics and research methods. This course can be taken fully online, or with a mix of on-campus and online units.

Please note: some online units require attendance at on-campus workshops.

CAREER OUTCOMES

This is a pathway to the Honours year for eligible students. Completion of the Honours year is the minimal educational qualification to apply for conditional registration as a postgraduate intern in psychology in Australia.

Psychologists are employed in health, social and disability services, youth services, corrective services, the armed services, research agencies such as the CSIRO, and in education. Private industry is also a large employer of psychologists who receive further specialised training for work in management, human resources and corporate consultancy services.

PROFESSIONAL RECOGNITION

This course has Australian Psychology Accreditation Council accreditation for entrance into postgraduate training.

PATHWAYS INTO THIS COURSE



No 1 teaching quality and student support in Australia in **PSYCHOLOGY**

BACHELOR OF SPEECH PATHOLOGY

Duration:	4 years
Starts:	March
Total units:	32
Location:	Gold Coast
CRICOS:	085520F

2020 Tuition Fees: Unit \$3,450 | Annual \$27,600

Admission requirements: Qualification equivalent to an Australian Year 12 with the required entry grade; and English language comparable to Academic IELTS 8.0 in all bands.

COURSE OVERVIEW

The Bachelor of Speech Pathology prepares you for entry into professional speech pathology practice. Speech pathologists assess and treat adults and children exhibiting acquired or congenital disorders of speech, fluency, voice, language and swallowing.

MAJOR AREAS OF STUDY

Arts and science-based units include phonetics and linguistics, audiology and neurology for speech pathology. Embedded throughout the course are principals of evidence-based practice, cultural competency and multi-modal communication.

PROFESSIONAL PLACEMENT

You complete approximately 1,000 hours of professional placements in diverse settings which might include the University's on-campus health clinic, public hospitals, private practice, community health, rehabilitation centres, aged care facilities, schools and rural health locations.

CAREER OUTCOMES

Speech pathologists are employed in private practice, schools programs, in government agencies or in the health and wellbeing industry. Speech pathologists work independently and also with other health and education specialists in interdisciplinary and multidisciplinary teams.

PROFESSIONAL RECOGNITION

The Bachelor of Speech Pathology is accredited by Speech Pathology Australia, the national professional and accrediting body.

PATHWAYS INTO THIS COURSE

Graduates of the Diploma of Health are guaranteed entry to this course and will receive credit for their previous study.

BACHELOR OF OCCUPATIONAL THERAPY

Duration: 4 years

Starts: March

Total units: 32

Location: Gold Coast, Coffs Harbour

CRICOS: 082680C

2020 Tuition Fees: Unit \$3,450 | Annual \$27,600

Admission requirements: Qualification equivalent to an Australian Year 12 with the required entry grade; and English language comparable to Academic IELTS 7.0 in all bands.

COURSE OVERVIEW

Occupational therapists' work is diverse – they assist people of all ages and abilities, transforming and adapting environments, activities or equipment where necessary to enhance participation in everyday tasks.

MAJOR AREAS OF STUDY

Optional major: Indigenous health.

Core subjects include occupational therapy theory and practice, such as therapy assessments and interventions; occupational transitions across the lifespan; health promotion; social sciences and biological sciences.
PROFESSIONAL PLACEMENT

Professional placements of approximately 1,000 hours build clinical and practical skills in settings that may include aged care, hospitals, community health, disability and mental health services, primary schools, industrial environments and private practice.

CAREER OUTCOMES

Career opportunities as an occupational therapist exist in aged care, hospitals, community health, mental health services, schools, industrial environments, private practice and a variety of health, education and disability centres and services.

PROFESSIONAL RECOGNITION

This course is accredited by Occupational Therapy Australia and the Occupational Therapy Council, and is approved by the World Federation of Occupational Therapists. Graduates of accredited occupational therapy programs are eligible for national registration. Graduates are also eligible for membership of Occupational Therapy Australia.

Please note: In order to register to practise, the Australian Health Practitioner Regulation Agency standards for English language must be met.

PATHWAYS INTO THIS COURSE



BACHELOR OF EXERCISE SCIENCE AND PSYCHOLOGICAL SCIENCE

Duration: 4 years

Starts: March

Total units: 32

Location: Coffs Harbour

CRICOS: 098568E

2020 Tuition Fees: Unit \$3,700 | Annual \$29,600

Admission requirements: Qualification equivalent to an Australian Year 12 with the required entry grade; and English language comparable to Academic IELTS 6.0 in all bands.

COURSE OVERVIEW

The Bachelor of Exercise Science and Psychological Science provides a scientific understanding of the structure and function of the human body as it relates to movement, the interrelationships between health and disease, and the psychological basis of physical activity.

MAJOR AREAS OF STUDY

You complete core units in exercise science such as anatomy, biomechanics, physiology, sports conditioning and motor control as well as core units in psychological science covering the principles of assessment, methodology and behaviour. A range of elective subjects is also available.

PROFESSIONAL PLACEMENT

You complete a 140-hour exercise science professional placement in the third year of the course. Placements might be in health and sporting centres, clubs, schools and academies or sport and recreation centres.

CAREER OUTCOMES

Career opportunities exist as a psychologist (with additional postgraduate training) or in careers that have therapeutic connections to sport and exercise, such as professional athlete counselling, rehabilitation or counselling within schools and colleges.

PROFESSIONAL RECOGNITION

This course has Australian Psychology Accreditation Council accreditation for entrance into postgraduate training. The course also has qualifying accreditation with Exercise and Sport Science Australia (ESSA) with full accreditation pending the first graduate cycle.

PATHWAYS INTO THIS COURSE



BACHELOR OF SPORT AND EXERCISE SCIENCE

Duration:	3 years
Starts:	March
Total units:	24
Location:	Gold Coast, Lismore, Coffs Harbour
CRICOS:	059883F
2020 Tuition Fees:	Unit \$3,450 Annual \$27,600
Admission requirements:	Qualification equivalent to an Australian Year 12 with the required entry grade; and English language comparable to Academic IELTS 6.0 with no band less than 5.5.

COURSE OVERVIEW

The Bachelor of Sport and Exercise Science prepares you to work with people who want to improve their health, fitness and wellbeing or their sporting performance, or those who want to prevent chronic conditions.

MAJOR AREAS OF STUDY

- Exercise science
- Education
- Nutrition studies.

PROFESSIONAL PLACEMENT

You complete a 140-hour exercise science placement in the final year of the course. This may be within clinical settings, the health and fitness industry, community and professional sport, elite programs of state and national sport organisations, schools, academies of sport, and within the wider sport, recreation and leisure industries.

Visit: scu.edu.au/healthplacements for information about placement prerequisites.

CAREER OUTCOMES

As an exercise scientist, graduates can expect to gain employment in sports coaching, strength training and conditioning, sport development, performance testing, health promotion, and sports or recreation facility and program management.

PROFESSIONAL RECOGNITION

The Bachelor of Sport and Exercise Science is currently undergoing reaccreditation with Exercise and Sport Science Australia (ESSA) at the Exercise Science level. Please check the website for updates on this. The course is also recognised by the National Strength and Conditioning Association of America.

Please note: In order to apply to be an Accredited Exercise Scientist, ESSA's standards for English language must be met.

Graduates are eligible for registration as an Exercise Professional with Fitness Australia and as a Level 1 Strength and Conditioning Coach with the Australian Strength and Conditioning Association.

PATHWAYS INTO THIS COURSE



MASTER OF CLINICAL EXERCISE PHYSIOLOGY

Duration:	1.5 years*
Starts:	March
Total units:	12
Location:	Gold Coast, Lismore
CRICOS:	071787E
2020 Tuition Fees:	Unit \$3,700 Annual \$29,600

Admission requirements: Qualification equivalent to an accredited Australian Bachelor degree in the field of Sport and Exercise Science (or related degree); and Academic IELTS of 6.0 with no band less than 5.5 across all bands. Additional accreditation required such as first aid and criminal checks.

COURSE OVERVIEW

The course provides an advanced understanding of the theoretical and practical components of clinical exercise physiology, covering pathologies including cardiac disease, pulmonary conditions, cancer, metabolic diseases, renal disease, musculoskeletal conditions and injuries, neurological and immunological conditions and exercise for mental health.

Clinical exercise physiology is an allied health profession that is part of the Medicare and private health insurance systems.

PROFESSIONAL PLACEMENT

The course includes a minimum of 360 hours of clinical placement for students to put theory into practice. This occurs in the SCU Health Clinic on campus, seeing a wide range of clients with chronic conditions, as well as at external locations such as hospitals, rehabilitation clinics, sporting clubs, private practices and aged care facilities.

Visit: scu.edu.au/healthplacements for information about placement prerequisites.

CAREER OUTCOMES

Accredited exercise physiologists can provide exercise testing, preventative exercise programs and specialist rehabilitation exercise interventions for people living with chronic diseases, disability or injury.

Graduates are suited to employment in various settings including private practice with referrals from GPs, rehabilitation centres, community health, multidisciplinary allied health clinics, workplace health centres, hospitals and aged care facilities.

PROFESSIONAL RECOGNITION

The Master of Clinical Exercise Physiology is accredited by Exercise and Sport Science Australia (ESSA). Graduates will be eligible to apply for accreditation with ESSA as an accredited exercise physiologist (AEP).

PATHWAYS INTO THIS COURSE





* Graduates of the **Bachelor of Sport and Exercise Science** receive up to four units towards the **Master of Clinical Exercise Physiology**, which enables registration as an exercise physiologist. Total duration of the combined degrees is four years.

NURSING & MIDWIFERY

Make a difference every day, where every day is different.

Mamoka – Japan

Bachelor of Midwifery student

“I have really enjoyed the placements working and learning from professional midwives who have been working in this field for 40 years!”

BACHELOR OF MIDWIFERY

BACHELOR OF NURSING

BACHELOR OF NURSING (FOR ENROLLED NURSES)

GRADUATE CERTIFICATE OF AUSTRALIAN NURSING (EPIQ)



BACHELOR OF MIDWIFERY

Duration: 3 years

Starts: March

Total units: 24

Location: Gold Coast, Coffs Harbour

CRICOS: 078636G

2020 Tuition Fees: Unit \$3,450 | Annual \$27,600

Admission requirements: Qualification equivalent to an Australian Year 12 with the required entry grade; and English language comparable to Academic IELTS 7.0 in all bands.

COURSE OVERVIEW

The Bachelor of Midwifery is specifically designed to prepare you for entry to professional midwifery practice.

You will develop the skills, knowledge and attitude to provide high quality care through safe and effective midwifery practice in accordance with the Australian Nursing and Midwifery Council Midwife standards for practice.

Study areas include anatomy and physiology, midwifery theory and practice, primary healthcare, women's health and psychosocial sciences.

PROFESSIONAL PLACEMENT

You undertake placements of approximately 1,000 hours and may attend antenatal and postnatal assessments/visits with women; provide direct care to women during labour; assist women during birth and support women and their babies with diverse needs across pregnancy, labour and birth, and the postnatal period.

CAREER OUTCOMES

Registered midwives may practise midwifery in various capacities in public and private hospitals and community, maternity and neonatal health care settings in urban, rural and remote areas. They can practise as group practice midwives, clinical midwifery consultants, midwifery educators, midwifery unit managers, community midwives, researchers, and as independent midwives (with further training). They can work in any state of Australia and in New Zealand.

PROFESSIONAL RECOGNITION

The Bachelor of Midwifery is approved by the Nursing and Midwifery Board of Australia and provides the necessary qualification for graduates to be eligible to register and practise as a midwife in Australia. Further training is required to work as a privately practising midwife.

Please note: In order to register to practise, the Australian Health Practitioner Regulation Agency standards for English language must be met.

PATHWAYS INTO THIS COURSE



BACHELOR OF NURSING

Duration: 3 years

Starts: March

Total units: 24

Location: Gold Coast, Lismore, Coffs Harbour

CRICOS: 016165C

2020 Tuition Fees: Unit \$3,450 | Annual \$27,600

Admission requirements: Qualification equivalent to an Australian Year 12 with the required entry grade; and English language comparable to Academic IELTS 7.0 in all bands.

COURSE OVERVIEW

The Bachelor of Nursing offers an outstanding combination of practical training while building knowledge about health, diagnosis, care plan development, care delivery and disease.

This course responds to contemporary nursing practice and builds knowledge and skills in professional nursing, biological sciences and social sciences. You will learn in state-of-the-art facilities with interactive models and simulation laboratories.

PROFESSIONAL PLACEMENT

Supervised clinical placements of approximately 860 hours provide you with nursing experience in public and private hospitals and health agencies. These may include acute and low care health facilities; community settings; mental health facilities; extended residential aged care; GP practices; health promotion and education; intensive care; health clinics; accident and emergency; palliative care; primary health care settings and related nursing and health service.

CAREER OUTCOMES

Graduate opportunities for registered nurses exist in a range of public and private health sectors; delivering acute and chronic disease care and management in clinical settings such as paediatrics, community health, primary health care and education; as a practice nurse in GP clinics, mental health, child care, aged care, perioperative care, Indigenous health, rural and remote area health, emergency departments and critical care.

PROFESSIONAL RECOGNITION

This course is approved by the Nursing and Midwifery Board of Australia and provides the necessary academic qualification for eligibility as a registered nurse in Australia.

Please note: In order to register to practise, the Australian Health Practitioner Regulation Agency standards for English language must be met.

PATHWAYS INTO THIS COURSE



BACHELOR OF NURSING (FOR ENROLLED NURSES)

Duration: 3 years

Starts: March

Total units: 24

Location: Gold Coast, Coffs Harbour

CRICOS: 093295K

2020 Tuition Fees: Unit \$3,450 | Annual \$27,600

Admission requirements: Applicant must be an enrolled nurse who holds the national training package qualification Diploma of Nursing (Enrolled) or who is registered with the relevant Australian Nursing Regulation Authority; and English language comparable to Academic IELTS 7.0 in all bands.

COURSE OVERVIEW

The Bachelor of Nursing Enrolled Nurse Pathway is specifically designed for enrolled nurses who can become registered nurses in just two years.

Specialist conversion units lead into units that build knowledge in professional nursing, biological sciences and social sciences, building on your professional experience and previous study.

The course provides for the opportunity to specialise in specific clinical areas of interest based on availability and supervisory facilities. You will learn in state-of-the-art facilities with interactive models and simulation laboratories.

PROFESSIONAL PLACEMENT

Professional placements of 640 hours are spread across several units within the course. Included in these units is a specifically designed professional experience placement for the Enrolled Nurse Pathway students to facilitate progression towards the role of a registered nurse.

CAREER OUTCOMES

Graduate opportunities for registered nurses exist in a range of public and private health sectors; delivering acute and chronic disease care and management in clinical settings such as paediatrics, community health, primary health care and education; as a practice nurse in GP clinics, mental health, child care, aged care, perioperative care, Indigenous health, rural and remote area health, emergency departments and critical care.

PROFESSIONAL RECOGNITION

This course is approved by the Nursing and Midwifery Board of Australia and provides the necessary academic qualification for eligibility as a registered nurse in Australia.

Please note: In order to register to practise, the Australian Health Practitioner Regulation Agency standards for English language must be met.

PATHWAYS INTO THIS COURSE



GRADUATE CERTIFICATE IN AUSTRALIAN NURSING (EPIQ)

Duration: 15 weeks

Starts: January, April, November Intake for this program is Study Period 1, 3, 6.

Total units: 4

Location: Gold Coast

CRICOS: 086342M

2020 Tuition Fees: Unit \$4,500 | Annual \$18,000

Admission requirements: Letter of determination from AHPRA#; and English language comparable to Academic IELTS 7.0 with no band less than 7.0.

*Teaching duration is 15 weeks, including four weeks of intensive classes, eight weeks of professional placement and three weeks of assignments.

#Applicants must first submit an AGOS-40 form to AHPRA and receive a letter of determination to apply for this course.

Information for international qualified nurses and midwives is available at: www.nursingmidwiferyboard.gov.au

COURSE OVERVIEW

The Graduate Certificate of Australian Nursing (EPIQ – Education Program for Internationally Qualified Nurses) is designed for internationally qualified registered nurses who wish to practise as a registered nurse in Australia.

This course is a program of academic and clinical studies that prepares candidates to gain registration through the Australian Health Practitioner Regulation Agency (AHPRA).

PROFESSIONAL PLACEMENT

An eight-week placement enables candidates to consolidate theoretical learning and build upon their professional practice.

Visit: scu.edu.au/healthplacements for information about placement prerequisites.

CAREER OUTCOMES

The course provides graduates with the opportunity to engage in health leadership and management, education, research opportunities and a broad spectrum of clinical nursing specialties. Graduates may engage in acute and chronic disease management in clinical settings such as paediatrics, community and primary health care and education; as a practice nurse in GP clinics, mental health, child and adolescent, aged care, perioperative care, Indigenous health, rural and remote area health care, emergency departments and critical care.

PROFESSIONAL RECOGNITION

This course is fully accredited with Australian Nursing and Midwifery Accreditation Council. Graduates are eligible to become a Registered Nurse in Australia through AHPRA.

95%

of our **NURSING** graduates are employed shortly after graduation
(Quality Indicators for Learning and Teaching 2018)

INDIGENOUS KNOWLEDGE

Understand how learning and knowledge are shared in the world's oldest living cultures and how this can be employed in a myriad of businesses and services.



Tennyson Strong

Bachelor of Indigenous Studies graduate

Intensive Family Preservation Worker, Family Support Network

A love of history and a fascination with leaders who had orchestrated world-changing events, coupled with a desire to know more about the history of his own people, made the Bachelor of Indigenous Studies a natural academic choice for Tennyson Strong.

The Southern Cross graduate says the degree offered diverse career opportunities both during and after his studies. "The door was wide open to go into child protection, out-of-home care, family support, education, paralegal work and business studies."

Tennyson majored in trauma and healing, a specialisation that has seen him develop a career in child protection and family support.

"My typical work day can be anywhere between 7am and 7pm. Every day you are solving issues or helping people to solve those issues. Not all families are able to access information to solve problems so I bring the knowledge to the home. I help build parenting capacity and I work with the children to meet their milestones – whether they are educational, medical, social or emotional. It's very satisfying work. I'm doing something different every single day."

BACHELOR OF INDIGENOUS KNOWLEDGE

DOCTOR OF INDIGENOUS PHILOSOPHIES

BACHELOR OF INDIGENOUS KNOWLEDGE

Duration: 3 years

Starts: March

Total units: 24

Location: Lismore

CRICOS: 093086G

2020 Tuition Fees: Unit \$3,350 | Annual \$26,800

Admission requirements: Qualification equivalent to an Australian Year 12 with the required entry grade; and English language comparable to Academic IELTS 6.0 with no band less than 5.5.

COURSE OVERVIEW

The Bachelor of Indigenous Knowledge generates greater understanding of Indigenous world views, by exploring histories, knowledge systems, determinants of health and wellbeing and ways of living, in a culturally diverse and supportive environment.

You will build theoretical and practical capability in areas including cultural protocols and Indigenous ways of knowing and being. You learn to engage with communities and work towards better environmental, social and economic outcomes.

MAJOR AREAS OF STUDY

- Community and land management
- Aboriginal health care.

CAREER OUTCOMES

Career opportunities exist in project management or administration with Indigenous, government or community-based organisations, especially those with a focus on Indigenous issues. Typical career sectors include: health services, paralegal work, social welfare, environmental management, education or business.

Eligible graduates can apply for the Bachelor of Indigenous Knowledge with Honours as a pathway to the Doctor of Indigenous Philosophies and to other postgraduate programs offered by Southern Cross University.

PATHWAYS INTO THIS COURSE

EAP
1

DOCTOR OF INDIGENOUS PHILOSOPHIES

Duration: 3 years

Starts: March, July

Total units: 24

Location: Lismore

CRICOS: 088054C

2020 Tuition Fees: Unit \$3,700 | Annual \$29,200

Admission requirements: Qualification equivalent to an Australian Year 12 with the required entry grade; and English language comparable to Academic IELTS 6.5 with no band less than 6.0.

COURSE OVERVIEW

The Doctor of Indigenous Philosophies comprises a mix of coursework and independent research.

The course is designed to provide high-level research skills for Indigenous people and for those interested in careers in the Indigenous sector. It comprises 24 units that include a research thesis and compulsory on-campus workshops.

The qualification is aimed at providing important and specific opportunities at both national and international levels for Indigenous peoples, those working within Indigenous communities and in the private and public sector, for the progression of in-depth studies on issues relevant to Indigenous communal futures.

CAREER OUTCOMES

Graduates are well placed for a career in research and academia, the government, professional or community sector, working in policy development, service delivery and program evaluation, and as leaders and high-level managers.

PATHWAYS INTO THIS COURSE

EAP
2

The Gnibi College of Indigenous Australian Peoples at Southern Cross University has been at the forefront of Indigenous knowledge education for many years. One of the many innovative techniques used in teaching is connective art, a visual and narrative methodology for sharing knowledge in a group, similar to the spirit of 'yarning', an Indigenous way of sharing stories. Using design concepts and Indigenous Knowledge, Connective Art generates interactions within a group using artworks and hidden word streams.

LAW & JUSTICE

A law degree that looks beyond borders, unconventional because the world demands it. Expand your options with a choice of double degrees in law and other disciplines.

BACHELOR OF LAWS (GRADUATE ENTRY)

BACHELOR OF LAWS (UNDERGRADUATE ENTRY)

BACHELOR OF LAWS AND CREATIVE WRITING

BACHELOR OF ARTS, BACHELOR OF LAWS

BACHELOR OF BUSINESS, BACHELOR OF LAWS

BACHELOR OF LEGAL AND JUSTICE STUDIES

BACHELOR OF LEGAL AND JUSTICE STUDIES, BACHELOR OF LAWS

ASSOCIATE DEGREE IN LAW (PARALEGAL STUDIES)



Lisa Mizeko

**Bachelor of Business, Bachelor of Laws graduate
External auditor, KPMG Brisbane**

With a head for numbers and a passion for travel, Southern Cross graduate Lisa Mizeko is pursuing her dream of a global career in business and finance.

Lisa completed study tours and exchanges to the top financial centres in Asia including Hong Kong, Singapore and China as part of a double degree in law and business. The breadth of her international experience has proved invaluable to her current role as an external auditor with multinational firm KPMG.

“In Singapore, I was amazed to see how so many cultures lived together and were very aware of each other. It really changed the way I viewed the world,” she says.

Although she is currently pursuing a career as a chartered accountant, Lisa says that law is closely related to her work in auditing and reporting. “Law taught me how to think critically. I may not be working as a lawyer but my law studies definitely inform my thinking.”

BACHELOR OF LAWS (GRADUATE ENTRY)

Duration:	3 years
Starts:	March, July (July intake Gold Coast only)
Total units:	24
Location:	Gold Coast, Lismore
CRICOS:	016164D
2020 Tuition Fees:	Unit \$3,350 Annual \$26,800
Admission requirements:	Qualification equivalent to an Australian Bachelor degree; and English language comparable to Academic IELTS 6.0 with no band less than 5.5.

COURSE OVERVIEW

If you already have an undergraduate degree, the Bachelor of Laws (Graduate Entry) allows you to qualify as a lawyer in just three years.

In addition to the core units, which comply with professional accreditation requirements, the course includes unique core units such as the philosophy of law and environmental law that reflect the School of Law and Justice's focus on justice and critique.

MAJOR AREAS OF STUDY

You may choose elective units to suit your interests and professional aspirations including areas as diverse as human rights, race and the law, animal law, climate law and policy, psychiatry, psychology and the law and ecological jurisprudence.

You may complete electives at an academically rigorous and rewarding summer law school in Byron Bay and the Gold Coast and undertake work placements and law mooting as part of your studies. Honours is embedded in the Bachelor of Laws degree and requires the completion of two specific units in addition to a high academic achievement overall.

PROFESSIONAL PLACEMENT

You may undertake voluntary legal experience and professional placement with legal firms or offices to build your practical legal skills and develop your professional networks.

CAREER OUTCOMES

This course will equip graduates with the skills to start a legal career and practise as a lawyer, and for a wide range of careers in corporate management, in the community sector or the private sector.

PROFESSIONAL RECOGNITION

The Bachelor of Laws (Graduate Entry) fulfils the academic requirements to practise law in Australia. Professional admission authorities also require law graduates of all universities to complete practical legal training or similar to practise as a lawyer.

PATHWAYS INTO THIS COURSE



BACHELOR OF LAWS (UNDERGRADUATE ENTRY)

Duration:	4 years
Starts:	March, July (July intake Gold Coast only)
Total units:	32
Location:	Gold Coast, Lismore
CRICOS:	050150E
2020 Tuition Fees:	Unit \$3,350 Annual \$26,800
Admission requirements:	Qualification equivalent to an Australian Bachelor degree; and English language comparable to Academic IELTS 6.0 with no band less than 5.5.

COURSE OVERVIEW

The Bachelor of Laws (Undergraduate Entry) fulfils the academic requirements for admission as a lawyer in Australia.

In addition to the core units, which comply with professional accreditation requirements, the course includes unique core units such as the philosophy of law and environmental law that reflect the School of Law and Justice's focus on justice and critique.

MAJOR AREAS OF STUDY

You may choose elective units to suit your interests and professional aspirations including areas as diverse as human rights, race and the law, animal law, climate law and policy, psychiatry, psychology and the law and ecological jurisprudence.

You may complete electives at an academically rigorous and rewarding summer law school in Byron Bay and the Gold Coast and undertake work placements and law mooting as part of your studies. Honours is embedded in the Bachelor of Laws degree and requires the completion of two specific units in addition to a high academic achievement overall.

PROFESSIONAL PLACEMENT

You may undertake voluntary legal experience and professional placement with legal firms or offices to build your practical legal skills and develop your professional networks.

CAREER OUTCOMES

This course will equip graduates with the skills to start a legal career and practise as a lawyer, and for a wide range of careers in corporate management, in the community sector or the private sector.

PROFESSIONAL RECOGNITION

The Bachelor of Laws (Undergraduate Entry) fulfils the academic requirements to practise law in Australia. Professional admission authorities also require law graduates of all universities to complete practical legal training or similar to practise as a lawyer.

PATHWAYS INTO THIS COURSE



BACHELOR OF LAWS AND CREATIVE WRITING

Duration: 4 years

Starts: March

Total units: 32

Location: Lismore

CRICOS: 096002D

2020 Tuition Fees: Unit \$3,350 | Annual \$26,800

Admission requirements: Qualification equivalent to an Australian Bachelor degree; and English language comparable to Academic IELTS 6.0 with no band less than 5.5.

COURSE OVERVIEW

This unique four-year combined degree in laws and creative writing provides you with clear professional pathways as both a legal and writing practitioner. You will gain fluency in written and oral expression, reading and research skills, and above all, writing across a range of genres, both professional and imaginative – complementing the rigor, research and writing skills developed in studying the law.

MAJOR AREAS OF STUDY

In addition to the core units, which comply with professional accreditation requirements, you may choose elective units to suit your interests and professional aspirations including areas as diverse as human rights, race and the law, animal law, climate law and policy, psychiatry, psychology and the law and ecological jurisprudence.

Our law degrees prepare you to work as a lawyer with a strong focus on justice and critique. One of the core units is Environmental Law which encompasses environmental laws of planning and pollution control, as well as laws dealing with land and nature conservation, providing insights into government practice and policy with respect to the environment. Other elective units include human rights, race and the law, animal law, climate law and policy, psychiatry, psychology and the law and ecological jurisprudence.

PROFESSIONAL PLACEMENT

You may undertake voluntary legal experience and professional placement with legal firms or offices, to complement your practical legal skills and become familiar with the issues facing working lawyers.

CAREER OUTCOMES

Graduates can pursue career opportunities that combine knowledge of creative writing and law; and those specific to each discipline in fields such as intellectual property, commercial or academic publishing, corporate communications, as well as legal work in a range of creative industries, government departments and professional practices.

PROFESSIONAL RECOGNITION

This course fulfils the academic requirements for admission to the legal profession. Professional admission authorities also require law graduates of all universities to complete practical legal training or similar to be eligible to practise as a lawyer.

PATHWAYS INTO THIS COURSE

EAP
1

\$65K

Above national average starting salary of **\$65,600**

Good Universities Guide 2019



BACHELOR OF BUSINESS, BACHELOR OF LAWS

Duration:	5 years
Starts:	March, July (July intake Gold Coast only)
Total units:	40
Location:	Gold Coast, Lismore
CRICOS:	019853K
2020 Tuition Fees:	Unit \$3,350 Annual \$26,800
Admission requirements:	Qualification equivalent to an Australian Bachelor degree; and English language comparable to Academic IELTS 6.0 with no band less than 5.5.

COURSE OVERVIEW

This is an ideal degree for a dynamic career in corporate law or a long-term career in business. The double degree prepares you for admission to the legal profession in Australia, and professional recognition with business industry bodies, depending on the specialisation chosen.

MAJOR AREAS OF STUDY

There are no majors in the Bachelor of Laws however a diverse range of law elective units is available, allowing you to customise your studies.

Majors for the Bachelor of Business include:

- Accounting
- Finance
- Human resource management
- International business
- Management
- Marketing.

PROFESSIONAL PLACEMENT

You may undertake voluntary legal experience and professional placement with legal firms or offices, to complement your practical legal skills. Optional business internships in this degree develop practical skills and professional networks.

CAREER OUTCOMES

Graduates qualify for admission to legal practice in Australia with a Bachelor of Laws degree and may enjoy enhanced career opportunities in legal practice and the private sector with the addition of a Bachelor of Business degree.

PROFESSIONAL RECOGNITION

The Bachelor of Laws fulfils the academic requirements for admission to the legal profession. Professional admission authorities also require law graduates of all universities to complete practical legal training or similar to be eligible to practise as a lawyer. For accreditation relating to the Bachelor of Business majors, please refer to page 26.

PATHWAYS INTO THIS COURSE



BACHELOR OF LEGAL AND JUSTICE STUDIES

Duration:	3 years
Starts:	March, July (July intake Gold Coast only)
Total units:	24
Location:	Gold Coast, Lismore
CRICOS:	022342G
2020 Tuition Fees:	Unit \$3,350 Annual \$26,800
Admission requirements:	Qualification equivalent to an Australian Bachelor degree; and English language comparable to Academic IELTS 6.0 with no band less than 5.5.

COURSE OVERVIEW

The Bachelor of Legal and Justice Studies brings together studies in law and politics. It is an excellent degree for those wanting to work in policy development, paralegal positions, conveyancing, and in the fields of justice. It provides a thorough practical grounding in legal knowledge and a strong understanding of Australian and international politics and society. If you who have already been working professionally in the fields of law and justice, this course will extend your knowledge, skills and expertise.

MAJOR AREAS OF STUDY

Optional major: Conveyancing.

PROFESSIONAL PLACEMENT

You may undertake voluntary legal experience and para-professional placement with legal firms or offices to complement your practical legal skills and become familiar with the issues facing working paralegals.

CAREER OUTCOMES

Law-related work In legal firms, government policy making, corporate firms, government legal departments, law enforcement agencies, legal aid offices, court administration, public prosecutions, and in the corporate sector in banking, insurance and conveyancing.

PROFESSIONAL RECOGNITION

When studied with the conveyancing major, this is a recognised educational qualification for a licensed conveyancer in NSW, accredited by NSW Fair Trading.

PATHWAYS INTO THIS COURSE



5-star starting salary, skills development, student support, teaching quality and overall educational experience in **LAW & PARALEGAL STUDIES**

BACHELOR OF LEGAL AND JUSTICE STUDIES, BACHELOR OF LAWS

Duration:	5 years
Starts:	March, July (July intake Gold Coast only)
Total units:	40
Location:	Gold Coast, Lismore
CRICOS:	026999M
2020 Tuition Fees:	Unit \$3,350 Annual \$26,800
Admission requirements:	Qualification equivalent to an Australian Year 12 with the required entry grade; and English language comparable to Academic IELTS 6.0 with no band less than 5.5.

COURSE OVERVIEW

In this double degree, the Bachelor of Laws provides you with the skills to work as a lawyer, while the Bachelor of Legal and Justice Studies provides a broader range of insights in the areas of social justice, policy development, politics and analysis. It provides a thorough practical grounding in legal knowledge and a strong understanding of Australian and international politics and society.

MAJOR AREAS OF STUDY

You may choose elective units to suit their interests and professional aspirations including areas as diverse as human rights, race and the law, animal law, climate law and policy, psychiatry, psychology and the law and ecological jurisprudence.

You may complete electives at academically rigorous and rewarding summer law schools in Byron Bay and the Gold Coast and undertake work placements and law mooting as part of your studies.

PROFESSIONAL PLACEMENT

You may undertake voluntary legal experience and professional placement with legal firms or offices, to complement your practical legal skills and become familiar with the issues facing working lawyers.

CAREER OUTCOMES

This double degree meets the requirements for admission as a lawyer in Australia with wide and varied career opportunities not only in the legal profession but also in government service, law enforcement and in the corporate sector.

PROFESSIONAL RECOGNITION

The Bachelor of Laws fulfils the academic requirements for admission to the legal profession. Professional admission authorities also require law graduates of all universities to complete practical legal training or similar to practise as a lawyer.

PATHWAYS INTO THIS COURSE



ASSOCIATE DEGREE IN LAW (PARALEGAL STUDIES)

Duration:	2 years
Starts:	March, July (July intake Gold Coast only)
Total units:	16
Location:	Gold Coast, Lismore
CRICOS:	016182B
2020 Tuition Fees:	Unit \$3,350 Annual \$26,800
Admission requirements:	Qualification equivalent to an Australian Year 12 with the required entry grade; and English language comparable to Academic IELTS 6.0 with no band less than 5.5.

COURSE OVERVIEW

The Associate Degree in Law (Paralegal Studies) provides an academic qualification as a paralegal or conveyancer and an admission pathway to the Bachelor of Laws.

You will gain foundational knowledge about the Australian legal system and its processes, develop skills in legal research and writing, and a working understanding of key legal principles. This is a fantastic opportunity to gain a formal qualification and start working in a wide range of industries as a paraprofessional.

This course consists of compulsory law units and elective units. Students may choose to study a major in conveyancing to satisfy the academic requirements as a conveyancer in NSW.

PROFESSIONAL PLACEMENT

You may undertake voluntary legal experience and paraprofessional placement with legal firms or offices to complement your practical legal skills and become familiar with the issues facing working paralegals.

CAREER OUTCOMES

Paralegals work with solicitors and barristers, in government legal departments, law enforcement agencies, legal aid offices, court administration, public prosecutions, in the community sector and in the corporate sector in finance, banking, insurance and conveyancing.

Students who achieve the required grade point average during or on completion of this degree may apply for admission into the undergraduate entry Bachelor of Laws.

Graduates may also choose to transfer into the Bachelor of Legal and Justice Studies and graduate with a Bachelor degree after just one additional year of study.

PROFESSIONAL RECOGNITION

When taken with a major in conveyancing, this course provides students with the academic requirements necessary to obtain a conveyancer's licence in NSW, and is accredited by NSW Fair Trading.

PATHWAYS INTO THIS COURSE



MARINE & ENVIRONMENTAL SCIENCES

The land, the forests, the ocean, the air. Develop your passion for sustainability and the environment into a real-world career.

BACHELOR OF ENVIRONMENTAL SCIENCE

BACHELOR OF MARINE SCIENCE AND MANAGEMENT

BACHELOR OF ENVIRONMENTAL SCIENCE, BACHELOR OF MARINE SCIENCE AND MANAGEMENT

BACHELOR OF FOREST SCIENCE AND MANAGEMENT

GRADUATE DIPLOMA OF FOREST MANAGEMENT

MASTER OF FOREST SCIENCE AND MANAGEMENT

MASTER OF MARINE SCIENCE AND MANAGEMENT



Lucas Handley

Bachelor of Marine Science and Management graduate

Marine scientist, free diving instructor and filmmaker

Lucas has always been a wild child. Growing up on the border of the Booyong rainforest in northern NSW, his playground was the creek and bushland around the family home. When the family moved to a nearby coastal suburb, his boyhood interest in the natural world shifted towards the ocean where a huge variety of marine life provided a never-ending array of wild encounters.

Marine science was a natural progression for Lucas and it became the backbone for his exploration of science and conservation through film and photography. "I was already involved in work around the ocean, but the degree I think legitimised what I was doing in film."

Studies in marine science also led to the formation of an important professional network. "I became friends with many of my lecturers and it gave me a strong connection to the working scientific community, which was invaluable. Being able to do work abroad and do a lot of my study in flexible mode online gave me the opportunity to combine both."

Following his appearance in the wildlife documentary 'Blue', Lucas hosted 'Great Australian Bites', a series based on five short films exploring both sides of the debate on shark conservation. "My work in film and documentaries is a good example of where contemporary marine science can take you."

BACHELOR OF ENVIRONMENTAL SCIENCE

Duration: 3 years

Starts: March, July

Total units: 24

Location: Lismore

CRICOS: 016152G

2020 Tuition Fees: Unit \$3,800 | Annual \$30,400

Admission requirements: Qualification equivalent to an Australian Year 12 with the required entry grade; and English language comparable to Academic IELTS 6.0 with no band less than 5.5.

COURSE OVERVIEW

The Bachelor of Environmental Science focuses on building scientific knowledge and practical skills in land, water, and flora and fauna conservation. As well as lectures and tutorials, you undertake classes in scientific laboratories equipped with advanced analytical equipment.

Field trips feature in many units, enabling you to gain first-hand knowledge and a range of hands-on skills in many differing environments. The University is located near a variety of unique study environments, including significant wetlands and estuaries, forests, coastal and inland national parks, and urban and rural development.

MAJOR AREAS OF STUDY

- Coastal management
- Environmental resource management
- Fisheries and aquaculture management
- Waste management and resource recovery.

PROFESSIONAL PLACEMENT

You may complete an optional eight-week professional placement to gain industry experience with organisations across the environmental science spectrum including local, state or federal government agencies, private consultancies, or business enterprises in Australia or overseas.

CAREER OUTCOMES

Graduates will have the practical skills to apply in a range of public and private sectors, including national parks, environmental consulting companies, waste management, fisheries management, aquaculture, ecotourism, land/river/ coast care programs, research, education, interpretation programs and environmental protection agencies.

PROFESSIONAL RECOGNITION

Graduates are eligible for membership of the Environment Institute of Australia and New Zealand.

PATHWAYS INTO THIS COURSE



BACHELOR OF ENVIRONMENTAL SCIENCE, BACHELOR OF MARINE SCIENCE AND MANAGEMENT

Duration: 4 years

Starts: March

Total units: 32

Location: Lismore

CRICOS: 086340B

2020 Tuition Fees: Unit \$3,800 | Annual \$30,400

Admission requirements: Qualification equivalent to an Australian Year 12 with the required entry grade; and English language comparable to Academic IELTS 6.0 with no band less than 5.5.

COURSE OVERVIEW

A knowledge of how to manage environments, whether they be our forests, river catchments or oceans is crucial to influencing the sustainability of our future.

This combined degree brings together the terrestrial aspects of environmental management with marine science and management, developing knowledge of the complex environments in which we live and the keys to environmental problems at a local and global level.

Fourth (final year) units are taught in intensive mode at the National Marine Science Centre in Coffs Harbour.

MAJOR AREAS OF STUDY

- Coastal management
- Environmental resource management
- Fisheries and aquaculture management
- Waste management and resource recovery.

Students also choose between completing an industry placement or a self-directed major project.

PROFESSIONAL PLACEMENT

You may complete an optional eight-week professional placement to gain industry experience with organisations across the environmental and marine science spectrum.

CAREER OUTCOMES

Career opportunities for environmental scientists exist in a range of public and private sectors, including national parks, environmental consulting companies, waste management, fisheries management, aquaculture, ecotourism, land/river/coast care programs, research, education, interpretation programs and environmental protection agencies. Careers in marine science are likewise varied in marine parks, fisheries and aquaculture marine-based tourism, state or federal government, marine consulting, or marine research and technical assistance.

PATHWAYS INTO THIS COURSE



BACHELOR OF MARINE SCIENCE AND MANAGEMENT

Duration:	3 years
Starts:	March, July
Total units:	24
Location:	Lismore, National Marine Science Centre, Coffs Harbour
CRICOS:	058084A
2020 Tuition Fees:	Unit \$3,800 Annual \$30,400
Admission requirements:	Qualification equivalent to an Australian Year 12 with the required entry grade; and English language comparable to Academic IELTS 6.0 with no band less than 5.5.

COURSE OVERVIEW

Understanding and conserving our marine environment is vital to a sustainable future. Establish your dream career and help make a difference with the Bachelor of Marine Science and Management.

The course combines marine science with contemporary management concepts and has a focus on conservation issues in both coastal and marine ecosystems.

This degree has a strong practical component. You will develop skills in the laboratory and field in a range of tropical and subtropical environments including the Solitary Islands, Cape Byron and Great Barrier Reef marine parks.

Explore global environmental issues including marine pollution and climate change, while also learning about coral reef ecology and marine mammal conservation among other fascinating subjects.

PROFESSIONAL PLACEMENT

You may complete an eight-week professional placement to gain industry experience with organisations across the marine science spectrum including local, state or federal government agencies, private consultancies, or business enterprises in Australia or overseas.

CAREER OUTCOMES

Students acquire skills that are highly desired by a range of employers. Career opportunities exist in marine park management, fisheries and aquaculture, marine-based tourism, state or federal government, marine consulting, or marine research and technical assistance.

PROFESSIONAL RECOGNITION

During the course, students will have the option to gain a nationally recognised qualification in scientific scuba diving.

PATHWAYS INTO THIS COURSE



MASTER OF MARINE SCIENCE AND MANAGEMENT

Duration:	2 years
Starts:	March, July
Total units:	16
Location:	National Marine Science Centre, Coffs Harbour
CRICOS:	083426J
2020 Tuition Fees:	Unit \$4,000 Annual \$32,000
Admission requirements:	Qualification equivalent to an Australian Bachelor degree; and English language comparable to Academic IELTS 6.0 with no band less than 5.5.

COURSE OVERVIEW

The Master of Marine Science and Management is designed for graduates wanting to pursue specialist expertise in marine science with a focus on sustainability and management.

The curriculum is strongly influenced by the needs of industry and potential employers. It has both a theoretical and a practical focus, with field studies in a range of coastal and marine environments.

Several units are specifically designed to develop research skills in areas that will enhance students' learning, academic and career opportunities.

The degree is delivered from the University's National Marine Science Centre teaching and research facility in Coffs Harbour, located adjacent to the Solitary Islands marine park. The Centre is equipped with state-of-the-art teaching facilities and field equipment, climate controlled laboratories, aquaculture facilities including a commercial hatchery, a public aquarium and a world-class flowthrough sea water system.

Students who have completed a relevant Bachelor degree may receive four units of advanced standing towards the Masters degree..

CAREER OUTCOMES

This course is designed so that students can integrate studies with their existing employment or experience. It is ideal for those seeking to develop careers in fields such as marine research, marine management and ecology, fisheries and aquaculture, marine park management, human impacts mitigation, marine-based tourism, biodiversity conservation, carbon accounting or policy development.

PATHWAYS INTO THIS COURSE



BACHELOR OF FOREST SCIENCE AND MANAGEMENT

Duration: 4 years

Starts: March, July

Total units: 32

Location: Lismore

CRICOS: 019851A

2020 Tuition Fees: Unit \$3,800 | Annual \$30,400

Admission requirements: Qualification equivalent to an Australian Year 12 with the required entry grade; and English language comparable to Academic IELTS 6.0 with no band less than 5.5.

COURSE OVERVIEW

The Bachelor of Forest Science and Management builds skills and an understanding of the multifaceted aspects of sustainable forestry management. You have the opportunity to specialise in small or large-scale plantations, restoration forestry, provision of environmental services, wood utilisation, forest inventory and planning, and international forestry. You learn how to use high tech applications in geographic and environmental mapping and analysis, and study subjects from ecology to policy models, agroforestry to chemistry and more.

The course also focuses on the business aspects of industrial forest management, while acknowledging the importance of alternatives such as small-scale farm forestry, mixed-species plantations and managed private native forests.

PROFESSIONAL PLACEMENT

You complete 16 weeks of practical workplace experience in a forestry-related area including plantation and forested regions across Australia.

CAREER OUTCOMES

Career opportunities exist in plantation establishment and management, use of geographic information systems, natural resource management and environmental planning, native forest management, fire prevention and control, forest resource assessment, policy development, pest and disease management, agroforestry and farm forestry advisory services, forest growth modelling and yield prediction, protected area management, forestry in developing countries and research.

PROFESSIONAL RECOGNITION

Graduates are eligible for membership of the Institute of Foresters of Australia.

GRADUATE DIPLOMA OF FOREST SCIENCE AND MANAGEMENT

Duration: 1 year

Starts: March, July

Total units: 8

Location: Lismore

CRICOS: 071788D

2020 Tuition Fees: Unit \$4,000 | Annual \$32,000

Admission requirements: Qualification equivalent to an Australian Bachelor degree; and English language comparable to Academic IELTS 6.0 with no band less than 5.5.

COURSE OVERVIEW

The Graduate Diploma of Forest Science and Management is suited to graduates with a background in general or environmental sciences who wish to seek careers in forest management.

The course provides targeted forest science and management education and training. It includes studies in natural resource management, measuring trees and forests, fire ecology and management, plant physiology and ecology, wood science, forest operations, silviculture, forest health and pest management. Students undertake fieldwork in eucalypt forests, rainforests, plantation forests and on farms.

Some units may be offered as intensive short courses to enable participation by professional foresters and may include formal lectures, tutorials, workshops, laboratory sessions and field trips for hands-on experience.

CAREER OUTCOMES

The Graduate Diploma of Forest Science and Management opens up a range of career opportunities in forest work. Graduates are suited to employment in the following fields: government forest services, fire fighting, land use and parks management, mine site rehabilitation and restoration forestry.

Eligible graduates can complete further study to attain the Master of Forest Science and Management.

PROFESSIONAL RECOGNITION

Graduates are eligible for associate membership of the Institute of Foresters of Australia.

PATHWAYS INTO THIS COURSE



MASTER OF FOREST SCIENCE AND MANAGEMENT

Duration: 2 years

Starts: March, July

Total units: 16

Location: Lismore

CRICOS: 068266A

2020 Tuition Fees: Unit \$4,000 | Annual \$32,000

Admission requirements: Qualification equivalent to an Australian Bachelor degree; and English language comparable to Academic IELTS 6.0 with no band less than 5.5.

COURSE OVERVIEW

The Master of Forest Science and Management is a postgraduate qualification in plantation and natural forest management. The course provides targeted forest science and management education and training. It includes studies in natural resource management, measuring trees and forests, fire ecology and management, plant physiology and ecology, wood science, forest operations, silviculture, forest health and pest management. Students undertake fieldwork in eucalypt forests, rainforests, plantation forests and on farms.

Students can also undertake a minor thesis, research project, or pilot study, and choose from a range of elective units including financial, strategic and project management.

Some units may be offered as intensive short courses to enable participation by professional foresters and may include formal lectures, tutorials, workshops, laboratory sessions and field trips for hands-on experience.

CAREER OUTCOMES

Career opportunities exist in plantation and natural forest management. Graduates typically seek career advancement within the following fields: forest management, carbon sequestration, integrated tree cropping and farm forestry, national parks and protected area management, environmental impact assessment and monitoring, environmental education and interpretation.

PROFESSIONAL RECOGNITION

Graduates qualify for automatic full membership of the Institute of Foresters of Australia.

PROFESSIONAL RECOGNITION

Graduates are eligible for associate membership of the Institute of Foresters of Australia.

EAP
1

84%

of **ENVIRONMENTAL STUDIES** graduates are employed shortly after graduating

(Quality Indicators for Learning and Teaching 2018)



5-star learning resources and **No. 1** in Australia for median starting salary in **ENVIRONMENTAL STUDIES**



MUSIC & CREATIVE ARTS

Spread your creative wings and turn your passion into a career.

BACHELOR OF ART AND DESIGN

BACHELOR OF CONTEMPORARY MUSIC

ASSOCIATE DEGREE OF CREATIVE WRITING



Rose Staff (Radiance)

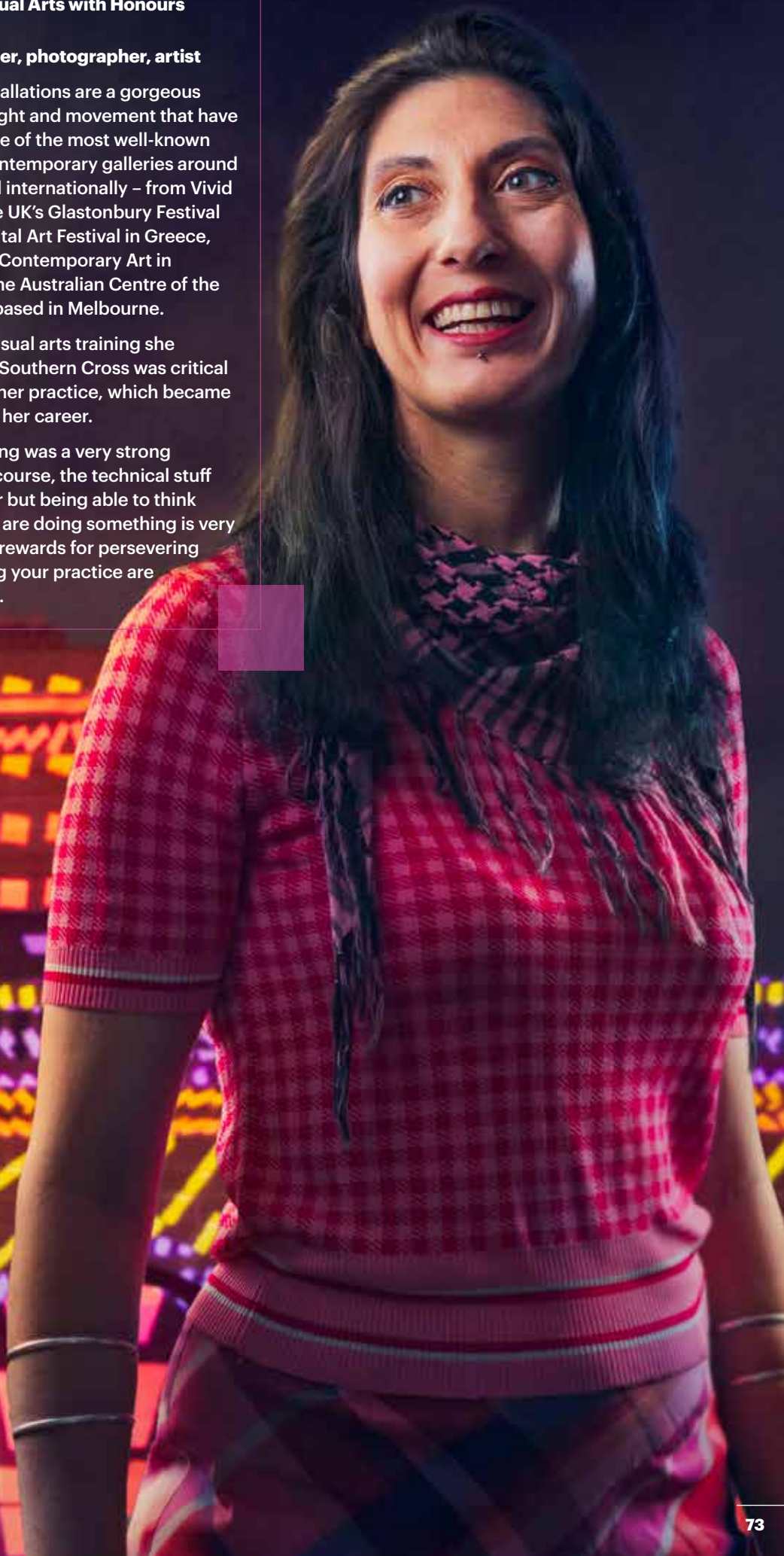
Bachelor of Visual Arts with Honours graduate

Graphic designer, photographer, artist

Rose Staff's installations are a gorgeous visual feast of light and movement that have featured in some of the most well-known festivals and contemporary galleries around the country and internationally – from Vivid in Sydney to the UK's Glastonbury Festival and Athens Digital Art Festival in Greece, the Museum of Contemporary Art in Montreal and The Australian Centre of the Moving Image based in Melbourne.

Rose says the visual arts training she experienced at Southern Cross was critical to establishing her practice, which became the bedrock for her career.

"Creative thinking was a very strong element in the course, the technical stuff I picked up later but being able to think about WHY you are doing something is very important...the rewards for persevering and establishing your practice are there," she says.



BACHELOR OF ART AND DESIGN

Duration: 3 years

Starts: March

Total units: 24

Location: Lismore

CRICOS: 096003C

2020 Tuition Fees: Unit \$3,350 | Annual \$26,800

Admission requirements: Qualification equivalent to an Australian Year 12 with the required entry grade; and English language comparable to Academic IELTS 6.0 with no band less than 5.5.

COURSE OVERVIEW

The Bachelor of Art and Design provides you with the opportunity to develop your artistic range and skills base, while also building an understanding of art theory.

You will enjoy rich and diverse studio experiences, developing and exploring your capabilities and potential as an artist, while immersed in an atmosphere that nurtures and inspires creativity.

MAJOR AREAS OF STUDY

Students complete core studio studies in painting, printmaking, mixed-media, 3D studies; art theory; curating; studio drawing and design. In second and third year, students select from a range of creative and media arts units and/or units from across the University to complement their areas of interest.

PROFESSIONAL PLACEMENT

Students have the opportunity to undertake an internship in the dynamic arts industries of the New South Wales North Coast. They can also study for a session at universities overseas including the prestigious Pratt Institute in New York, University of Hertfordshire in England, Universitat de Barcelona in Spain, University of Massachusetts in USA, and Kansai Gaidai University in Japan.

CAREER OUTCOMES

Graduates typically become practising artists and fine art researchers or may find career opportunities in other art and design-related fields.

PATHWAYS INTO THIS COURSE



BACHELOR OF CONTEMPORARY MUSIC

Duration: 3 years

Starts: March

Total units: 24

Location: Lismore

CRICOS: 026996C

2020 Tuition Fees: Unit \$3,350 | Annual \$26,800

Admission requirements: Qualification equivalent to an Australian Year 12 with the required entry grade; and English language comparable to Academic IELTS 6.0 with no band less than 5.5.

COURSE OVERVIEW

This Bachelor of Contemporary Music prepares you for a portfolio career in music – the multi-faceted career pathway that is now most common for contemporary musicians.

You will learn in a professional music industry environment, using state-of-the-art facilities with lecturers who are all practising musicians.

There are various study streams within the course. You can combine elements from different streams to create your own pathway with the opportunity to perform individually in state-of-the-art music studios or at a wide range of entertainment venues and festivals, guided by lecturers with strong industry links.

MAJOR AREAS OF STUDY

- Performance (audition stream)
- Performance (non-audition stream)
- Songwriting/Composition (audition stream)
- Songwriting/Composition (non-audition stream)
- Music education
- Sound production
- New media arts
- Screen.

PROFESSIONAL PLACEMENT

Students have the opportunity to undertake professional placements at major local festivals such as Splendour in the Grass and with music organisations.

CAREER OUTCOMES

This course prepares students for a career as a performer, songwriter, producer, sound engineer, music educator, session musician, musical director, music event promoter or venue manager. Graduates who complete the required units can also study the Master of Teaching and teach secondary school music.

PATHWAYS INTO THIS COURSE



ASSOCIATE DEGREE OF CREATIVE WRITING

Duration: 2 years

Starts: March, July

Total units: 16

Location: Lismore

CRICOS: 040061M

2020 Tuition Fees: Unit \$3,350 | Annual \$26,800

Admission requirements: Qualification equivalent to an Australian Year 12 with the required entry grade; and English language comparable to Academic IELTS 6.0 with no band less than 5.5.

COURSE OVERVIEW

The Associate Degree of Creative Writing offers a rich mix of creative writing and literary studies across a range of genres in fiction and nonfiction, including experimental writing, journalism, life writing, poetry, writing for stage and screen, and writing for young adults.

This program is taught by writers from the Northern Rivers arts community and beyond. It provides opportunities for hands-on experience with the Byron Writers Festival, the Bellingen Readers and Writers Festival and other literary events.

PROFESSIONAL PLACEMENT

You can undertake an optional professional placement unit of 70 – 100 hours in an appropriate organisation.

CAREER OUTCOMES

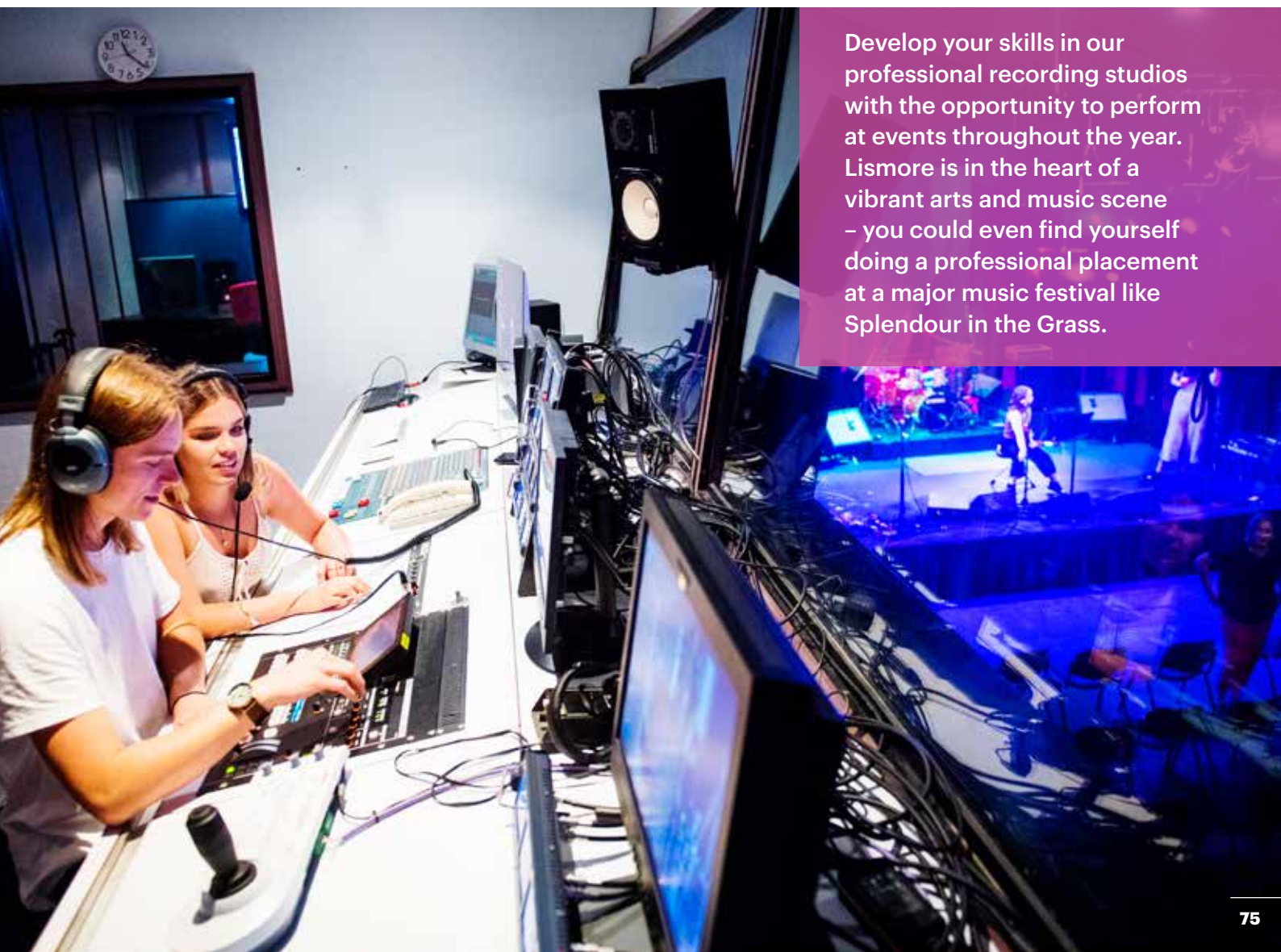
Graduates might find work as a writer of novels and scripts; food, nature, art or travel writer; feature journalist; critic and reviewer; essayist; poet; editor and publisher; or writer for marketing and public relations, the public service and arts- related industries.

Successful completion of the Associate Degree of Creative Writing offers up to 16 units of credit towards a Southern Cross Bachelor of Arts.

PATHWAYS INTO THIS COURSE

EAP
1

Develop your skills in our professional recording studios with the opportunity to perform at events throughout the year. Lismore is in the heart of a vibrant arts and music scene – you could even find yourself doing a professional placement at a major music festival like Splendour in the Grass.



RESEARCH

Bold and progressive, Southern Cross University has an outstanding research record.

EXCELLENCE IN RESEARCH

In the 2018 national Excellence in Research for Australia (ERA) report, Southern Cross University achieved outstanding ratings of 'at world standard' or above in 23 research fields.

RATED WELL ABOVE WORLD STANDARD

- Earth Sciences
- Geochemistry
- Oceanography
- Environmental Science and Management
- Ecology
- Zoology
- Agricultural and Veterinary Sciences
- Crop and Pasture Production
- Fisheries Sciences
- Forestry Sciences
- Civil Engineering
- Resources Engineering and Extractive Metallurgy
- Complementary and Alternative Medicine
- Nursing.

RATED ABOVE WORLD STANDARD

- Environmental Sciences
- Soil Sciences
- Biological Sciences
- Engineering
- Medical and Health Sciences
- Human Movement and Sports Science.

RATED AT WORLD STANDARD

- Curriculum and Pedagogy
- Tourism
- Policy and Administration.

Southern Cross University offers a suite of research degrees, including Masters, PhD (Doctor of Philosophy) and Professional Doctorates, through the University's Graduate School. A dedicated team supports research candidates throughout their studies.

For more information about research or applying to do a research degree at Southern Cross University visit:

scu.edu.au/graduateschool

Course Name	Duration	Annual Fee (\$AUD)	Location	CRICOS	IELTS	Start
ARTS & SOCIAL SCIENCES						
Master of Arts and Social Sciences (Research)	2 years	26,000	Gold Coast, Lismore Coffs Harbour	097469E	6.5	Ongoing
Doctor of Philosophy (Arts and Social Sciences)	4 years	26,000	Lismore	097528K	6.5	Ongoing
BUSINESS & TOURISM						
Master of Business (Research)	2 years	26,000	Gold Coast, Lismore	016179G	6.5	Ongoing
Master of Business (Tourism) (Research)	2 years	26,000	Gold Coast, Lismore Coffs Harbour	097470A	6.5	Ongoing
Doctor of Business Administration	3 years	29,200	Gold Coast	064045B	6.5	Mar, Jul, Nov
Doctor of Philosophy (Tourism)	4 years	26,000	Gold Coast, Lismore, Coffs Harbour	027010J	6.5	Ongoing
Doctor of Philosophy (Business)	4 years	26,000	Gold Coast, Coffs Harbour	082683M	6.5	Ongoing
EDUCATION						
Master of Education (Research)	2 years	26,000	Gold Coast, Lismore Coffs Harbour	097471M	6.5	Ongoing
Doctor of Philosophy (Education)	4 years	26,000	Gold Coast, Lismore	016170F	6.5	Ongoing
ENVIRONMENT, SCIENCE & ENGINEERING						
Master of Science (Engineering)	2 year	30,000	Gold Coast, Lismore Coffs Harbour	095715A	6.5	Ongoing
Master of Science (Environmental Science and Management)	2 years	30,000	Lismore	051066D	6.5	Ongoing
Doctor of Philosophy (Engineering)	4 years	30,000	Gold Coast, Lismore Coffs Harbour	095714B	6.5	Ongoing
Doctor of Philosophy (Environmental Science and Management)	4 years	30,500	Lismore, National Marine Science Centre	016172D	6.5	Ongoing
HEALTH & HUMAN SCIENCE						
Master of Science (Health Science)	2 years	30,000	Lismore, Coffs Harbour	059882G	6.5	Ongoing
Doctor of Philosophy (Health Science)	4 years	30,000	Lismore	016171E	6.5	Ongoing
GNIBI COLLEGE OF INDIGENOUS AUSTRALIAN PEOPLES						
Master of Indigenous Philosophies	2 years	26,000	Gold Coast, Lismore, Coffs Harbour	097467G	6.5	Ongoing
Doctor of Indigenous Philosophies	3 years	26,000	Lismore	088054C	6.5	Ongoing
Doctor of Philosophy (Indigenous Philosophies)	4 years	26,000	Gold Coast, Lismore, Coffs Harbour	097468F	6.5	Mar, Jul
LAW & JUSTICE						
Master of Laws (Research)	2 years	26,000	Lismore	051063G	6.5	Ongoing
Doctor of Philosophy (Law)	4 years	26,000	Gold Coast, Lismore	016197F	6.5	Ongoing
SOUTHERN CROSS GEOSCIENCE						
Master of Science (GeoScience)	2 years	30,000	Gold Coast, Lismore, Coffs Harbour	077597G	6.5	Ongoing
Doctor of Philosophy (GeoScience)	4 years	30,000	Gold Coast, Lismore, Coffs Harbour	077598F	6.5	Ongoing
SOUTHERN CROSS PLANT SCIENCE						
Master of Science (Plant Science)	2 years	30,000	Lismore	077723F	6.5	Ongoing
Doctor of Philosophy (Plant Science)	4 years	30,000	Gold Coast, Lismore, Coffs Harbour	077724E	6.5	Ongoing

*Annual tuition fees are in Australian dollars, are correct at time of printing (April 2019) and are subject to change. Students are required to pay Overseas Student Health Cover (OSHC) for the duration of their visa in advance. In addition students will be charged a Student Services and Amenities Fee (SSAF), and non-tuition fees such as textbooks, sundry costs, excursions and equipment ranging from \$1,000-\$2,000 per year.

STUDY ABROAD

Our Study Abroad program offers students the opportunity to study one or two sessions in Australia, with the provision of credit back to your home institution.



STUDY ABROAD UNDERGRADUATE

STUDY ABROAD POSTGRADUATE

CAREER START (STUDY ABROAD)

STUDY ABROAD

UNDERGRADUATE

Duration:	6 months (1 session)
Starts:	March, July, November (November intake Gold Coast only)
Total units:	4
Location:	Gold Coast, Lismore, Coffs Harbour
CRICOS:	019864G
2020 Tuition Fees:	\$8,400 \$9,100 with the Explore Australia trip

Admission requirements: Qualification equivalent to an Australian Year 12 with the required entry grade; and English language comparable to Academic IELTS 6.0 with no band less than 5.5.

POSTGRADUATE

Duration:	6 months (1 session)
Starts:	March, July, November (November intake Gold Coast only)
Total units:	3
Location:	Gold Coast, Lismore
CRICOS:	019864G
2020 Tuition Fees:	\$8,500

Admission requirements: Qualification equivalent to Australian Bachelor degree; and English language comparable to Academic IELTS 6.5 with no band less than 6.0.

COURSE OVERVIEW

The Study Abroad program offers a range of popular units in business, management, marketing, tourism and event management, hotel and hospitality management, information technology, Australia-specific cultural or Indigenous studies, creative arts, music, media, creative writing, social welfare, humanities, environmental science, engineering, marine science, health and exercise science.

CAREER START (STUDY ABROAD)

Duration:	6 months
Starts:	See start dates by campus below
Total units:	4
Location:	Gold Coast, Lismore
CRICOS:	096807M
2020 Tuition Fees:	\$12,040

Admission requirements: Qualification equivalent to Australian Year 12; and English language comparable to Academic IELTS 5.0 with no band less than 4.5.

GOLD COAST STREAMS

Arts	18 Nov 2019
Business	18 Nov 2019, 30 Mar, 3 Aug 2020
Tourism & Hospitality	18 Nov 2019, 30 Mar, 3 Aug 2020
Science	18 Nov 2019

LISMORE STREAMS

Arts	18 Nov 2019, 30 Mar 2020
Business	18 Nov 2019, 30 Mar 2020
Tourism & Hospitality	18 Nov 2019, 30 Mar 2020
Science	18 Nov 2019

COURSE OVERVIEW

This full-time course starts with a 10-week English language proficiency program (English for Academic Purposes), followed by four (4) units of academic study in either a business, tourism and hospitality, science or arts/humanities stream.

Students may be able to gain credit at their home institution.

ADVANCED STANDING

Students who successfully complete this course may receive up to four (4) units of credit towards the Diploma of Business or the Diploma of Science.

SCHOLARSHIPS

Southern Cross University offers a range of scholarships to support international students applying to study at our Gold Coast, Lismore or Coffs Harbour campuses.



**VICE CHANCELLOR'S INTERNATIONAL
DIVERSIFICATION SCHOLARSHIP**

**VICE CHANCELLOR'S ACADEMIC
EXCELLENCE SCHOLARSHIP**

**SCU INTERNATIONAL WOMEN
IN STEM SCHOLARSHIP**

DR ALAN PHAN SCHOLARSHIP

**SCU INTERNATIONAL
REGIONAL SCHOLARSHIP**

AUSTRALIAN AWARDS SCHOLARSHIPS

The Australia Awards are an Australian government initiative to support partner countries to progress their development goals. Southern Cross University proudly supports Australia Awards scholars from a diverse background. Visit the Department of Foreign Affairs and Trade for more information:
dfat.gov.au/australia-awards/

Check out the Scholarship Finder at:
scu.edu.au/scholarships for more information.

SERVICES FOR STUDENTS

LIBRARY SERVICES

Libraries are located at all campuses and provide students with print and online resources, computers, printing and photocopying facilities, and spaces for both group work and individual study.

The Library's online resources include electronic books and journals that can be accessed anywhere, anytime on your desktop, laptop or mobile device. You can borrow print resources from all Southern Cross University libraries. Items not held at your home campus can be requested through the catalogue and will be delivered free of charge, either to the campus of your choice or to your home address if you study online.

Librarians are available in person, over the phone, via chat, or via email to help you. The Library website offers a range of useful online guides and other information that will help you to find the resources you need.

Students studying online can benefit from having print books mailed out to them, with free return postage included. They can also request copies of journal articles or book chapters from print sources in the library to be scanned and delivered electronically.

Other universities in Australia and New Zealand extend borrower status to our students. You'll need to provide your student photo ID card and proof of current enrolment to the University library from which you wish to borrow. Charges may apply at some libraries.

Visit: scu.edu.au/library

DEVELOPING ACADEMIC SKILLS

The Academic Skills team helps students realise their full academic potential. Online resources provide self-guided assistance in areas such as essay and report writing and academic writing generally, approaches to effective reading, note-taking, critical analysis, time management, academic integrity and exam technique. Workshops, group study sessions and individual consultations are available along with a peer-led study group program in selected units.

Study Buddi Drop-in is an academic peer support program where students help students with questions about assignments and academic study skills like referencing on a just-in-time drop-in basis. No appointments are needed and students are welcome to drop-in, discuss their work and ask questions with student leaders in their discipline.

Visit: scu.edu.au/academicskills

IT SERVICES

Apart from our state-of-the-art computer labs with scanning, printing and copying services, currently enrolled students have access to a range of technology services including:

MYSCU – YOUR UNIVERSITY ONLINE

- Student administration services including My Enrolment where you can check your progress, grades and more
- Blackboard Learn, your online access to unit resources, communication, collaboration tools and, in many cases, lecture recordings
- Online readings, eBooks, journal articles, books and multimedia provided by the library
- Booking study rooms and library help services
- Access to timetables for lectures and exams
- University news and events happening around the campuses and beyond.

MOBILE TECHNOLOGIES

Mobile@SCU is a free mobile application that lets you stay connected wherever you are and offers access to phone directories, searchable campus maps, news, videos, the library, iTunesU and your learning sites in Blackboard Learn. To download or get further information, visit: scu.edu.au/it/mobility

Visit scu.edu.au/it for more details about our technology services or to contact the helpdesk.

STUDIOSITY

Studiosity is an after-hours online tutoring service available from 4pm to midnight, six days a week (Sunday to Friday). This service allows you to immediately connect to a real-life expert tutor who can help you work through questions, or provide feedback. You can also upload a writing draft to Studiosity Check Mate and receive feedback in 24 hours.

EDUROAM

Eduroam is a worldwide roaming wireless service between participating educational institutions to allow sharing of wireless access. Eduroam provides a secure wireless connection for staff, students and visitors. Being part of Eduroam allows you to visit a participating institution or partner and connect to the internet the same way you do on campus without having to request a guest account. Access to Eduroam is free. There are no account fees, no connection fees and no access fees.

Visit: scu.edu.au/eduroam

STUDENT EMAIL

All currently enrolled students are given access to our cloud-based email service and free access to Microsoft Office products for installation on up to five devices.

HOW TO APPLY

1. Apply scu.edu.au/international

Apply online (preferred) OR complete the **International Application for Admission** form with all supporting documents:

- Original or Certified Copy of academic transcripts, with grading system
- English language test results (e.g. IELTS, TOEFL)
- Academic or employer references (if required)
- Advanced Standing application (if relevant). Advanced standing refers to previous study or work experience which may reduce the duration of your degree. You should apply for advanced standing at the time of application.

Submit your completed **International Application for Admission** form with all supporting documents to intapps@scu.edu.au

2. Assessment

Applications will be acknowledged and responded to within 10 days.* Successful applications receive an **International Offer Package (Offer)** including:

- Offer
- Information for Accepting your Offer
- Offer Acceptance Agreement.

* Time period relates to complete application for the immediate study period.

3. Accept

Review the **Offer** to make sure all information is correct and submit extra documents if requested.

Once conditions are met, send the signed **Offer Acceptance Agreement**, before the **Offer Lapse Date**.

1. Pay the 'fee payable on acceptance' amount on the **Offer** once Genuine Temporary Entrant (GTE) conditions are met.
2. Once all documents are received and conditions are met, Southern Cross University will issue an electronic Confirmation of Enrolment (**eCOE**) so you can apply for an Australian visa.

ARRIVING IN AUSTRALIA

GETTING TO AUSTRALIA

Make sure you know how to get to the campus before you leave as public transport in regional areas is limited. Remember to fill in the Greeting Service request online.

scu.edu.au/international/arrive

ACCOMMODATION

Review short-term and long-term accommodation options before you leave.

scu.edu.au/accommodation

ORIENTATION

Orientation week is compulsory and full of essential information. Bring your passport as identification.

scu.edu.au/orientation

ENGLISH LANGUAGE REQUIREMENTS

Most applications must include evidence of English language proficiency. Academic IELTS is the bench-mark score indicated in the admission requirements for each course. All English language results must have been achieved in the last two years.

For **undergraduate degrees** the minimum score required is IELTS of 6.0 with no band less than 5.5 with the

exception of health sciences, nursing and midwifery and social sciences degrees.

For most **postgraduate degrees** the minimum score required is IELTS of 6.5 overall.

The English language requirement may also be satisfied by completing an English for Academic Purposes or pathway program with SCU College (see page 21).

IELTS	5.5 no band less than 5.0	6.0 no band less than 5.5	6.5 no band less than 6.0	7.0 no band less than 6.5	7.0 all bands
TOEFL (Internet)	46 W: 16	60 W: 17 R: 11 L: 11 S:17	79 W: 21 R: 20 L: 20 S: 20	94 W: 24	94 W: 25
Pearson PTE	42 Communication score: 36	50 Communication score: 46	58 Communication score: 50	65 Communication score: 58	65 Communication score: 65
Cambridge CAE	47	52	58	67	67
CPE	-	52	-	-	-
ISPLR	3 in all 4 skills	3+ or better in all 4 skills	4 in all 4 skills	4 in all 4 skills	4+ in all 4 skills
CEFR	-	B2	-	-	-

W: Writing S: Speaking R: Reading L: Listening – indicates minimum score in each band.

ACADEMIC REQUIREMENTS

The minimum academic requirement for **undergraduate degrees** is displayed in the 'Academic Score by Country' shown on the international tab for each course on the University website.

For **postgraduate degrees**, assessment is made on an equivalent Australian Bachelor degree plus any other course-specific requirements.

Advanced standing refers to previous study undertaken which may reduce the duration of your degree. You need to apply for advanced standing at the time of application.

When assessing applications against the relevant Academic Standards, the University will use accepted educational resources, including Australian Education International – National Office of Overseas Skills Recognition (NOOSR), United Kingdom National Recognition Information Centre (UK NARIC), University Admissions Centre Assessment of Qualifications Manual and the Queensland Tertiary Admissions Centre Schedule to establish the Australian equivalent of an applicant's overseas qualifications.

For more information visit:
scu.edu.au/international/apply

Please note that some courses in nursing, midwifery and health sciences have inherent requirements. Refer to important information on page 96 for further details.

'English language comparable to Academic IELTS 6.0 with no band less than 5.5' means to meet the English requirement the minimum overall IELTS score is 6.0, and no band in reading, writing, speaking or listening can be below 5.5.

Southern Cross University also accepts comparable scores from CPE (Cambridge Certificate of Proficiency), CAE (Cambridge Certificate of Advanced English), TOEFL (Test of English as a Foreign Language – internet-based test), PTE (Pearson Test of English), ISPLR (International Second Language Proficiency Rating), CEFR (Common European Framework of Reference for Languages).

IMPORTANT INFORMATION

STUDENT VISA

To study in Australia you must have a valid Australian visa. Student visas are temporary visas that allow people to come to Australia for a specified period to study at an Australian institution. International students applying for a student visa must undertake a full-time load of eight (8) units per year. Online units can be studied, providing it does not exceed one-third of the total units studied with final approval to be obtained from SCU International. In each compulsory study period, the student must study at least one face-to-face unit unless the student is completing the last unit of the course. International students are required to remain in their principle course for at least six (6) months before they can request a transfer to study at another education provider. For more information visit the Department of Home Affairs at: www.homeaffairs.gov.au

STUDENT VISA CONDITIONS

Make sure you are familiar with the conditions of your visa by reviewing the information set out on the Department of Home Affairs website.

FINANCIAL REQUIREMENTS

You must have sufficient funds to cover all education and living expenses for the duration of your studies. Refer to the More information for students' under the 'Studying in Australia' section on the Department of Home Affairs website.

www.homeaffairs.gov.au/trav/stud

BRINGING OTHER FAMILY MEMBERS

You may be eligible to bring family members depending on your visa. School-aged children must be enrolled at school. School fees will vary depending on school, age of child and if you are a scholarship holder. For a list of local schools visit: scu.edu.au/international/apply

ESOS

The Education Services for Overseas Students Act (ESOS) 2000, establishes legislative requirements and standards for the quality assurance of education courses to international students on a student visa in Australia. ESOS also provides tuition fee protection for international students. The revised National Code 2018 commenced on 1 January 2018 and sets nationally

consistent standards that govern the protection and delivery of courses to international students by providers registered on the Commonwealth Register of Institutions and Courses for Overseas Students (CRICOS) visit: www.internationaleducation.gov.au

CRICOS

Higher educational providers in Australia must be registered to enrol overseas students in specific courses. Registered providers have a CRICOS (Commonwealth Register of Institutions for Overseas Students) code and a specific CRICOS course code. This registration guarantees the provider and the course meet the high standards necessary for overseas students.

Visit: cricos.education.gov.au

INHERENT REQUIREMENTS

Inherent requirements are the essential components of the course or unit that demonstrate abilities, knowledge and skills to achieve the core learning outcomes of the course or unit.

This applies to most health science, nursing, midwifery, social welfare and social work degrees.

For more information about inherent requirements refer to the course page for the relevant course at scu.edu.au

STUDENT ACCESS & INCLUSION

If you have a disability or health condition which may affect your ability to meet these requirements please visit:

scu.edu.au/disabilitysupport

TEACHING & ASSESSMENT METHODS

Assessments vary for each unit and discipline and may comprise a mix of assessment types, including: laboratory and readings-based assignments, seminar presentations, field and investigation reports, practical or clinical exams, written exams, oral exams, academic writing, research proposals, research essays, reports, oral and written presentations, case studies or problem solutions, group work as well as individual assignments, online and class participation.

Specific teaching and assessment details for each course can be found on the relevant course page at:

scu.edu.au/courses

TUITION PROTECTION SERVICE

The Tuition Protection Service (TPS) is an initiative of the Australian Government to assist international students whose education providers are unable to fully deliver their course of study. The TPS ensures that international students are able to either complete their studies in another course or with another education provider or receive a refund of their unspent tuition fees.

Visit: www.tps.gov.au

REFUNDS

Visit: scu.edu.au/international/apply for more information about:

- Refunds and remission procedure
- Withdrawals and release, refunds
- Enrolment, deferment, suspension or cancellation of enrolment procedure.

TUITION FEES

Tuition Fees are listed in the **Offer of Admission** and are correct at the time of issue. They will be subject to an increase each calendar year and students are required to pay the new tuition fee each year. Tuition fees are due at the beginning of each study period, however you can pay all fees in advance.

OSHC

OSHC (Overseas Student Health Cover) is a compulsory medical health insurance for international students studying in Australia. BUPA is the University's preferred provider. For alternative providers visit: www.privatehealth.gov.au

SSAF

The Student Services and Amenities Fee (SSAF) provides Australian universities with additional funds to maintain and improve essential services and amenities of a non-academic nature for students. These funds are used to support and enrich the student experience. SSAF is collected following enrolment. For more information visit: scu.edu.au/students

INTERNATIONAL APPLICATION FOR ADMISSION

Complete ALL sections relevant to your application using

BLOCK LETTERS only or

- FULL DEGREE** Sections A, B, E, F, G, H, I, J, K
- ENGLISH LANGUAGE PROGRAM** Complete sections A, D, E, G, H, I, J, K
- STUDY ABROAD** Complete sections A, C, E, F, G, H, I, J, K
- EDUCATION COLLABORATION** Complete sections A, B, E, F, J, K

Institution Name:

EDUCATION AGENT (including branch):

A. PERSONAL DETAILS

Have you previously enrolled at Southern Cross University? Yes No If 'Yes' supply student number _____

Title (optional)	Family Name (as it appears on your passport)	Given Name/s
Date of Birth (dd/mm/yy)	Gender (M/F/other)	Formal Name (to be displayed on your academic transcript)

PASSPORT DETAILS

Citizenship	Country of Birth
Passport Number	

Is English your first language? Yes No If 'No' what is your first language? _____

Student's address in home country

Student's address if already in Australia

Number and Street	Number and Street
Suburb/Town	Suburb/Town
State, Zip/Postcode & Country	State, Postcode
Phone (include country code)	Phone
Email	Email

Emergency Contact Details

Full Name	Relationship
Phone (home)	Phone (work)
	Phone (mobile)

Do you have a disability, impairment or long-term medical condition that may affect your studies? Yes No If 'Yes' please indicate area(s) of impairment Hearing Medical Vision Mobility Learning Other (please specify) _____

B. PROGRAM OF STUDY

Course preferences	Major	Location	Duration	Start date

ADVANCED STANDING Are you seeking advanced standing for previous study? Yes No

If 'Yes' complete an **Advanced Standing Application Form** (scu.edu.au/advancedstanding), with supporting documentation including a certified copy of the transcript, comprehensive syllabus details for each relevant unit (descriptions, learning hours, assessment methods and explanation of weighting of each unit).

C. STUDY ABROAD (Non award study for one or two sessions)

Start date	Duration
Unit name	Unit code
Campus	Session/year

D. ENGLISH LANGUAGE PROGRAM ONLY

Course	Location	Duration	Session/year

Do you require Homestay accommodation? Yes No **A 10-week Homestay placement is recommended for EAP programs**
If 'Yes', attach the Homestay application, download at scu.edu.au/international/apply
If 'No', I understand that finding alternative accommodation is my responsibility.

E. ENGLISH LANGUAGE PROFICIENCY

Was English the language of instruction in previous secondary or tertiary studies? Yes No

If 'Yes' please indicate the studies completed in English and their combined duration. Attach your results as supporting evidence.

Studies	Duration

If 'No', you will be required to complete an English language proficiency test. Please indicate date, test undertaken and results below.

Date taken* (dd/mm/yy)	English test name	Result	Test report form number

*English language test must have been undertaken within the last two years.

F. ACADEMIC QUALIFICATIONS

Provide details and official documentation of **ALL** your qualifications; include secondary and post-secondary. All official certified transcripts must be submitted.

Name of Qualification	School/Institution	Country	Length of program	Completed (mm,yy)
e.g. Higher School Certificate	Lismore High School	Australia	2 years	11/12
e.g. Bachelor of Business	Southern Cross University	Australia	3 years	02/17

Are you CURRENTLY studying? Yes No If 'Yes' please provide details.

Qualification/Award	Institution	Country	Date (mm,yy)	Results (expected)

Have you been excluded or are you liable for exclusion on academic or other grounds, from any Australian tertiary institution or course following a previous enrolment? Yes No If 'Yes', provide details on additional page.

RELEVANT EMPLOYMENT HISTORY

If you would like to include work experience as part of your application, provide a current resume and work references.

From	To	Full-time/ Part-time	Employer	Position	Duties
mm/yy	mm/yy				
mm/yy	mm/yy				

G. FINANCE

I confirm I have access to sufficient funds for the duration of my studies and I understand that I may be required to demonstrate funds to cover expenses for the first year in Australia. Refer to www.homeaffairs.gov.au for more information.

Scholarship details (if applicable) Will you be receiving a scholarship? Yes No

Name of scholarship

You can choose to pay more than 50 per cent of your tuition fees before you start your course.

Will you be paying more than 50 per cent of your course fees before you start? Yes No

H. VISA To be completed by international students wanting to undertake study in Australia who will be applying for a student visa

1. Do you hold a current Australian visa? Yes No *If 'Yes' attach a copy of visa and passport.*
2. Have you or any dependent ever been refused entry to Australia or had a visa cancelled? Yes No
If 'Yes', please provide details on additional page.

I. OVERSEAS STUDENT HEALTH COVER (OSHC) You will need to provide proof of health cover at acceptance stage

Would you like the University to arrange your OSHC? Yes No

If yes, what type of OSHC will you be requiring (tick the relevant category) Single Couple Family

If no, please provide your OSHC details: OSHC Provider Name: _____

Membership number: _____ Cover type _____ Expiry date (dd/mm/yy) _____

J. DECLARATION, TERMS AND CONDITIONS AND SIGNATURE

The personal information you provide on this form is protected by the Commonwealth Privacy Act 1998, New South Wales Privacy and Personal Information Protection Act 1998 and the health information is protected by the Health Records and Information Privacy Act 2002. Details regarding the operation of the Acts are contained in Southern Cross University's Privacy Management Plan and may be viewed at: scu.edu.au/privacy

I also understand that:

- Southern Cross University communicates with me via electronic means.
- The information I have provided to the University may be made available to Commonwealth and State agencies pursuant to obligations under the Education Services for Overseas Students (ESOS) Act 2000 and the National Code of Practice for Registration Authorities and Providers of Education and Training to Overseas Students.
- The University is requesting this information so we can process your application for admission. When storing information electronically, the University may disclose your information by virtue of its cloud computing arrangements with cloud servers located in Hong Kong, Singapore and Ireland. The University is reasonably satisfied these countries have similar privacy protection as afforded under Australian law. Other than specified in this form, the University will not disclose your information to others unless required by law e.g. emergency or law enforcement purposes.
- Providing information to us is not required by law, however if you choose not to, we cannot process your application for admission.
- You can request access to your information at any time. To access or update your information refer to the University's Privacy Officer: privacy@scu.edu.au
- I declare I am a genuine temporary entrant and genuine student and intend to come to Australia with the primary purpose of academic study, and have the language, educational ability and financial capacity to undertake and successfully complete my academic plan.
- The University is unable to provide me with financial assistance if I experience financial difficulties during the course of my studies.
- By nominating an agent, as listed in the "contact address for correspondence", to represent me in my application to the University, I agree to the release of all information relating to my application and subsequent enrolment at the University to my nominated agent, until such time as this nomination is revoked by me in writing.
- If my application is part of a package arrangement with a provider, I agree to release my application information to process my application for admission.
- If the payment for my course is made by a sponsor (a third party paying my tuition fees or nominated by me as my sponsor), I agree to the release of all information to my sponsor regarding my application and subsequent enrolment including my subject results, progress reports, and enrolment details.
- Giving false or misleading information is a serious offence under the Criminal Code of the Commonwealth Government of Australia.
- The information may be disclosed to third parties for the purpose of progressing my application.
- In the case of visa refusals an administrative charge of \$500 or five per cent is charged when you apply for a refund, to cover costs incurred in relation to processing your student application.
- If the University provides Confirmation of Enrolment, or enrolls a student on the basis of fraudulent, forged or deliberately misleading documentation being supplied by the applicant/student, the enrolment will be withdrawn and in the case of a visa refusal the university will retain a modest administration fee.

I have read and understand the description of the ESOS framework made available at: www.internationaleducation.gov.au

I declare that the information provided in this application and the documentation supporting it is true and complete.

Applicant's signature _____ Date (dd/mm/yy) ____ / ____ / ____

Signature of parent/legal custodian
if student is under 18 years of age _____ Date (dd/mm/yy) ____ / ____ / ____

K. APPLICATION CHECKLIST

All documents must be certified copies of originals. Translation of documents into English must be completed by an accredited translation authority or an SCU International approved representative.

- | | |
|---|---|
| <input type="checkbox"/> Completed International Application for Admission form | <input type="checkbox"/> Evidence of employment history (if required) |
| <input type="checkbox"/> Academic transcripts (with grading system) | <input type="checkbox"/> Any other supporting documents applicable to your application |
| <input type="checkbox"/> English language test results | <input type="checkbox"/> Copy of passport (include photo page and relevant visa page/s) |
| <input type="checkbox"/> Advanced Standing form and documentation (if required) | <input type="checkbox"/> Copy of Marriage Certificate (if applicable). |

SUBMIT YOUR APPLICATION WITH ATTACHMENTS TO THE RELEVANT CAMPUS

(maximum total size of all attachments 9MB)

GOLD COAST, LISMORE or COFFS HARBOUR <i>Full degree, English Language Programs, Study Abroad, Education Collaborations.</i>	Email: intapps@scu.edu.au
THE HOTEL SCHOOL SYDNEY OR MELBOURNE <i>Mulpha conducts academic courses on behalf of Southern Cross University at The Hotel School Sydney and Melbourne.</i>	Email: thsapps@scu.edu.au
SYDNEY, MELBOURNE OR PERTH <i>EduCo conducts academic courses on behalf of Southern Cross University at Sydney, Melbourne or Perth.</i>	Email: educoapps@scu.edu.au

2020 INTERNATIONAL COURSE & FEES

Course Name	Duration	Unit	Unit Fee	Annual Fee AUD*	Location	CRICOS	IELTS	Start	Page
ARTS, HUMANITIES AND SOCIAL SCIENCES									
Bachelor of Arts	3 years	24	3,350	26,800	Lismore	016183A	6.0	Mar, Jul	22
Bachelor of Social Welfare	3 years	24	3,350	26,800	Gold Coast	082681B	6.5	Mar, Jul	22
Master of Social Work (Professional Qualifying)	2 years	16	3,350	26,800	Gold Coast	082686G	7.0	Mar	23
BUSINESS & TOURISM									
Bachelor of Accounting	3 years	24	3,350	26,800	Gold Coast Lismore	092940E	6.0	Mar, Jul, Nov Mar, Jul	26
Bachelor of Business	3 years	24	3,350	26,800	Gold Coast Lismore	016157C	6.0	Mar, Jul, Nov Mar, Jul	26
Bachelor of Business (Aviation Management)	3 years	16	3,350	26,800	Gold Coast	089780J	6.0	Mar, Jul, Nov	27
Graduate Diploma in Accounting	1 year	8	3,650	29,200	Gold Coast	055689G	6.5	Mar, Jul, Nov	28
Master of Professional Accounting	2 years	16	3,650	29,200	Gold Coast	078675A	6.5	Mar, Jul, Nov	28
Graduate Diploma in Business	1 year	8	3,650	29,200	Gold Coast	079661K	6.0	Mar, Jul, Nov	29
Master of Business Administration	2 years	16	3,650	29,200	Gold Coast	079662J	6.5	Mar, Jul, Nov	29
Master of International Tourism and Hotel Management, Master of Business Administration	2 years	16	3,650	29,200	Gold Coast	097604C	6.5	Mar, Jul, Nov	30
Doctor of Business Administration	3 years	24	3,650	29,200	Gold Coast	064045B	6.5	Mar, Jul, Nov	30
Bachelor of Business in Convention and Event Management	3 years	24	3,350	26,800	Gold Coast	082689E	6.0	Mar, Jul, Nov	31
Bachelor of Business in Hotel Management	3 years	24	3,450	27,600	The Hotel School Sydney The Hotel School Melbourne	086102E	6.0	Mar, Jul, Nov	31
Bachelor of Business in Tourism and Hospitality Management	3 years	24	3,350	26,800	Gold Coast Coffs Harbour	085172K	6.0	Mar, Jul, Nov Mar, Jul	32
Graduate Diploma in International Tourism and Hotel Management	1 year	8	3,300	26,400	Gold Coast The Hotel School Sydney The Hotel School Melbourne	066578A	6.0	Mar, Jul, Nov	33
Master of International Tourism and Hotel Management	2 years	16	3,300	26,400	Gold Coast The Hotel School Sydney The Hotel School Melbourne	085173J	6.5	Mar, Jul, Nov	33
DIGITAL MEDIA & IT									
Bachelor of Digital Business	3 years	24	3,350	26,800	Gold Coast	096283A	6.0	Mar, Jul	36
Bachelor of Digital Media and Communications	3 years	24	3,350	26,800	Lismore	091527D	6.0	Mar, Jul	36
Bachelor of Information Technology	3 years	24	3,350	26,800	Gold Coast	019840D	6.0	Mar, Jul	37
Master of Information Technology	2 years	16	3,650	29,200	Gold Coast	097605B	6.0	Mar, Jul, Nov	37
ENGINEERING AND SCIENCE									
Bachelor of Engineering (Honours) in Civil Engineering	4 years	32	4,000	32,000	Lismore	077352F	6.0	Mar, Jul	40
Bachelor of Engineering (Honours) in Mechanical Engineering	4 years	32	4,000	32,000	Lismore	086409G	6.0	Mar, Jul	40
Bachelor Of Engineering (Honours) in Coastal Systems Engineering	4 years	32	4,000	32,000	Lismore	098590G	6.0	Mar, Jul	41
Bachelor of Science	3 years	24	3,800	30,400	Lismore	086344J	6.0	Mar	41
Master of Engineering Management, Master of Business Administration	2 years	16	3,650	29,200	Gold Coast	094098G	6.5	Mar, Jul, Nov	42
HEALTH SCIENCES									
Bachelor of Biomedical Science	3 years	24	3,450	27,600	Gold Coast	086341A	6.0	Mar	46
Bachelor of Podiatry	4 years	32	3,450	27,600	Gold Coast	085519K	7.0	Mar	46
Bachelor of Pedorthics	3 years	24	3,450	27,600	Gold Coast	086343K	7.0	Mar	47
Bachelor of Podiatry, Bachelor of Pedorthics	5 years*	40	3,450	27,600	Gold Coast	097466G	7.0	Mar	47
Bachelor of Clinical Sciences (Osteopathic Studies)	3 years	24	3,450	27,600	Gold Coast Lismore	091528C	7.0	Mar	49
Master of Osteopathic Medicine	2 years	16	3,450	27,600	Lismore	069872D	6.0	Mar	49
Bachelor of Psychological Science	3 years	24	3,700	29,600	Gold Coast, Coffs Harbour	071464B	6.0	Mar, Jul, Nov Mar, Jul	50
Bachelor of Speech Pathology	4 years	32	3,700	29,600	Gold Coast	085520F	8.0	Mar	50
Bachelor of Occupational Therapy	4 years	32	3,450	27,600	Gold Coast, Coffs Harbour	082680C	7.0	Mar	51
Bachelor of Exercise Science and Psychological Science	4 years	24	3,700	29,600	Coffs Harbour	098568E	6.0	Mar	51
Bachelor of Sport and Exercise Science	3 years	24	3,450	27,600	Gold Coast Lismore Coffs Harbour	059883F	6.0	Mar	52
Master of Clinical Exercise Physiology	1.5 years	12	3,700	29,600	Gold Coast Lismore	071787E	6.0	Mar	52
NURSING & MIDWIFERY									
Bachelor of Midwifery	3 years	24	3,450	27,600	Gold Coast Coffs Harbour	078636G	7.0	Mar	56
Bachelor of Nursing	3 years	24	3,450	27,600	Gold Coast Lismore Coffs Harbour	016165C	7.0	Mar	56

* This degree may be completed in 4 years. Visit scu.edu.au/courses for details.

Course Name	Duration	Unit	Unit Fee	Annual Fee AUD*	Location	CRICOS	IELTS	Start	Page
NURSING & MIDWIFERY (CONT)									
Bachelor of Nursing <i>Enrolled Nurse to Registered Nurse pathway</i>	3 years	24	3,450	27,600	Gold Coast, Coffs Harbour	093295K	6.0	Mar	57
Graduate Certificate in Australian Nursing (EPIQ)	15 weeks	4	4,500	18,000	Gold Coast	086342M	7.0	Jan, Apr, Nov	57
INDIGENOUS KNOWLEDGE									
Bachelor of Indigenous Knowledge	3 years	24	3,350	26,800	Lismore	093086G	6.0	Mar	59
Doctor of Indigenous Philosophies	3 years	24	3,700	29,200	Lismore	088054C	6.5	Mar, Jul	59
LAW & JUSTICE									
Bachelor of Laws (graduate entry)	3 years	24	3,350	26,800	Gold Coast Lismore	016164D	6.0	Mar, Jul Mar	62
Bachelor of Laws (undergraduate entry)	4 years	32	3,350	26,800	Gold Coast Lismore	050150E	6.0	Mar, Jul Mar	62
Bachelor of Laws and Creative Writing	4 years	32	3,350	26,800	Lismore	096002D	6.0	Mar	63
Bachelor of Business, Bachelor of Laws	5 years	40	3,350	26,800	Gold Coast Lismore	019853K	6.0	Mar, Jul Mar	64
Bachelor of Legal and Justice Studies	3 years	24	3,350	26,800	Gold Coast Lismore	022342G	6.0	Mar, Jul Mar	64
Bachelor of Legal and Justice Studies, Bachelor of Laws	5 years	40	3,350	26,800	Gold Coast, Lismore	026999M	6.0	Mar, Jul Mar	65
Associate Degree in Law (Paralegal Studies)	2 years	16	3,350	26,800	Gold Coast Lismore	016182B	6.0	Mar, Jul Mar	65
MARINE AND ENVIRONMENTAL SCIENCES									
Bachelor of Environmental Science	3 years	24	3,800	30,400	Lismore	016152G	6.0	Mar, Jul	68
Bachelor Of Environmental Science, Bachelor of Marine Science And Management	4 years	32	3,800	30,400	Lismore	086340B	6.0	Mar	68
Bachelor of Marine Science and Management <i>*Taught at National Marine Science Centre (NMSC), Coffs Harbour.</i>	3 years	24	3,800	30,400	Lismore NMSC*	058084A	6.0	Mar, Jul	69
Master of Marine Science and Management <i>*Taught at National Marine Science Centre (NMSC), Coffs Harbour.</i>	2 years	16	4,000	32,000	NMSC*	083426J	6.0	Mar, Jul	69
Bachelor of Forest Science and Management	4 years	32	3,800	30,400	Lismore	019851A	6.0	Mar, Jul	70
Graduate Diploma of Forest Science and Management	1 year	8	4,000	32,000	Lismore	071788D	6.0	Mar, Jul	70
Master of Forest Science and Management	2 years	16	4,000	32,000	Lismore	068266A	6.0	Mar, Jul	71
MUSIC & CREATIVE ARTS									
Bachelor of Art & Design	3 years	24	3,350	26,800	Lismore	096003C	6.0	Mar	74
Bachelor of Contemporary Music	3 years	24	3,350	26,800	Lismore	026996C	6.0	Mar	74
Associate Degree of Creative Writing	2 years	16	3,350	26,800	Lismore	040061M	6.0	Mar, Jul	75
STUDY ABROAD PROGRAM									
			Tuition Fee AUD						
Study Abroad – undergraduate	6 months	4	8,400		Gold Coast Lismore	019864G	6.0	Mar, Jul, Nov Mar, Jul	79
			(\$9,100 with the Explore Australia trip)						
Study Abroad – postgraduate	6 months	3	8,500		Gold Coast Lismore	019864G	6.5	Mar, Jul, Nov Jul, Nov	79
Career Start (Study Abroad)* 10 weeks English language program plus one session academic units	6 months	4	12,040		Gold Coast Lismore	096807M	5.0	18 Nov 19, 30 Mar 2020, 3 Aug 2020	79
UNIVERSITY PATHWAYS									
Diploma of Business*	1 year	8	3,350	26,800	Gold Coast	079231K	5.5	Mar, Jul, Nov	19
Diploma of Science*	1 year	8	3,950	31,600	Lismore	086408J	5.5	Mar	19
Undergraduate Qualifying Program (UQP)*	15 weeks	3	12,840		Gold Coast Lismore	091558G	5.5	Mar, Jul, Nov	18
Postgraduate Qualifying Program (PQP)*	15 weeks	3	12,840		Gold Coast	091557J	6.0	Mar, Jul, Nov	18
English Language Proficiency Program (EAP and General English)	5 weeks		Weekly Tuition Fee 450+ plus homestay*		Gold Coast Lismore	064715B		6 Jan 2020, 11 May 2020, 14 Sept 2020	17
	10 weeks		Weekly Tuition Fee 450+ plus homestay*		Gold Coast Lismore	064715B		18 Nov 2019, 30 Mar 2020, 3 Aug 2020	17
	15 weeks		Weekly Tuition Fee 450+ plus homestay*		Gold Coast Lismore	064715B		14 Oct 2019, 24 Feb 2020, 29 Jun 2020	17
	20 weeks		Weekly Tuition Fee 450+ plus homestay*		Gold Coast, Lismore	064715B		9 Sep 2019, 20 Jan 2020, 25 May 2020	17

*Homestay is recommended for first 10 weeks of English program. Weekly cost will vary with location from \$270-\$330 (approximately), plus a placement fee of \$240.

*Successful completion of these programs provides direct entry into selected Southern Cross University degrees.

*Plus \$240 enrolment fee.

NON-TUITION FEES	Annual Fee
Business, Information Technology, Humanities and Social Sciences, Indigenous Knowledge	1,000 Textbooks, stationery, sundry costs
Tourism and Hospitality Management	1,500 Textbooks, stationery, internships or placements
Environmental, Forest and Marine Sciences, Engineering, Health Sciences and Psychology, Nursing and Midwifery, Media, Music and Visual Arts	2,000 Textbooks, equipment, excursions

*Annual Tuition fees are in Australian dollars (AUD), are correct at time of printing (May 2019) and subject to change. Annual tuition fee is based on completing 8 units per year. Students are required to pay Overseas Student Health Cover (OSHC) for the duration of their visa in advance. In addition, students will be charged a Student Services and Amenities Fee (SSAF), and indicative non-tuition fees as shown above.

SCU INTERNATIONAL

GOLD COAST

Southern Cross Drive
Bilinga
QLD 4225 Australia

LISMORE

Military Road
Lismore
NSW 2480 Australia

COFFS HARBOUR

Hogbin Drive
Coffs Harbour
NSW 2450 Australia

FIND AN AGENT

scu.edu.au/international/agents

CRICOS: 01241G

2019 KEY DATES

Session 1

Orientation: 24 – 28 February

Start: 2 March

Exams: 1 – 12 June

Session 2

Orientation: 29 June – 3 July

Start: 6 July

Exams: 6 – 16 October

Session 3

Orientation: 26 – 30 October

Start: 2 November

Exams: 15 – 19 February 2021

CONTACT

international@scu.edu.au

scu.edu.au/international

T: +61 2 6620 3876

 [scuonline](#)

 [scuinternational](#)

 [southerncrossuni](#)

 [uniscu](#)